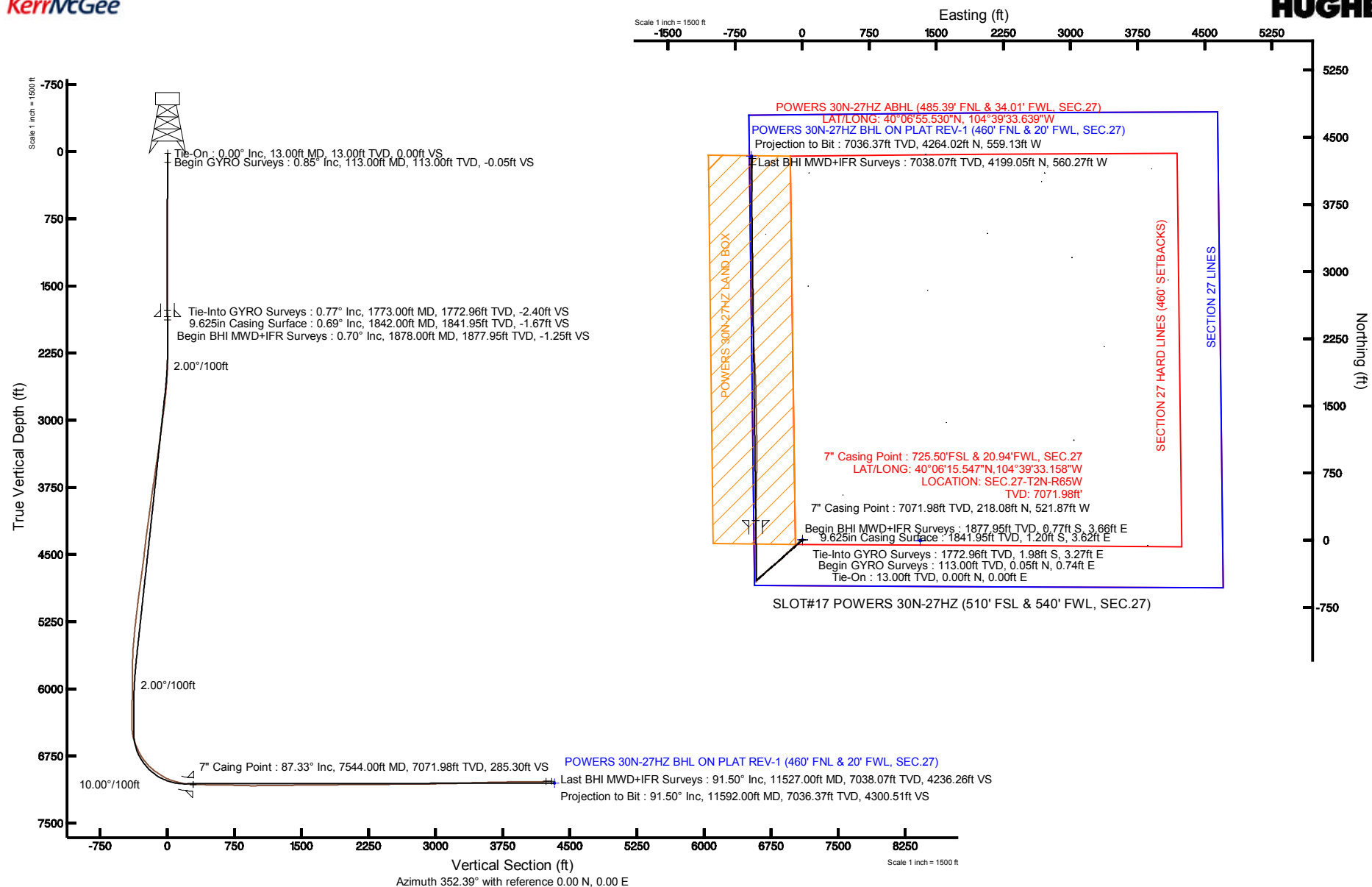


Plot reference wellpath is POWERS 30N-27HZ (REV-D.0) PWP

True vertical depths are referenced to ENSIGN 138 (RKB)	Grid System: NAD83 / Lambert Colorado SP, Northern Zone (501), US feet
Measured depths are referenced to ENSIGN 138 (RKB)	North Reference: True north
ENSIGN 138 (RKB) to Mean Sea Level: 4947 feet	Scale: True distance
Mean Sea Level to Mud line (At Slot: SLOT#17 POWERS 30N-27W2 (5'10" FSL & 540' FWL, SEC.27): 0 feet	Depths are in feet
Coordinates are in feet referenced to Slot	Created by: precain on 4/1/2013





Actual Wellpath Report

POWERS 30N-27HZ AWP

Page 1 of 6



REFERENCE WELLPATH IDENTIFICATION

Operator	KERR-MCGEE OIL & GAS ONSHORE LP	Slot	SLOT#17 POWERS 30N-27HZ (510' FSL & 540' FWL, SEC.27)
Area	COLORADO	Well	POWERS 30N-27HZ
Field	WELD COUNTY (KERR MCGEE)	Wellbore	POWERS 30N-27HZ AWB
Facility	SEC.27-T2N-R65W		

REPORT SETUP INFORMATION

Projection System	NAD83 / Lambert Colorado SP, Northern Zone (501), US feet	Software System	WellArchitect® 3.0.2
North Reference	True	User	Precain
Scale	0.99996	Report Generated	4/1/2013 at 1:00:39 PM
Convergence at slot	0.54° East	Database/Source file	WellArchitectDB/POWERS_30N-27HZ_AWB.xml

WELLPATH LOCATION

	Local coordinates		Grid coordinates		Geographic coordinates	
	North[ft]	East[ft]	Easting[US ft]	Northing[US ft]	Latitude	Longitude
Slot Location	7.73	-1320.21	3235710.24	1281749.48	40°06'13.392"N	104°39'26.442"W
Facility Reference Pt			3237030.41	1281754.37	40°06'13.316"N	104°39'09.452"W
Field Reference Pt			3197771.84	1268891.29	40°04'09.600"N	104°47'36.000"W

WELLPATH DATUM

Calculation method	Minimum curvature	ENSIGN 138 (RKB) to Facility Vertical Datum	4947.00ft
Horizontal Reference Pt	Slot	ENSIGN 138 (RKB) to Mean Sea Level	4947.00ft
Vertical Reference Pt	ENSIGN 138 (RKB)	ENSIGN 138 (RKB) to Mud Line at Slot (SLOT#17 POWERS 30N-27HZ (510' FSL & 540' FWL, SEC.27))	4947.00ft
MD Reference Pt	ENSIGN 138 (RKB)	Section Origin	N 0.00, E 0.00 ft
Field Vertical Reference	Mean Sea Level	Section Azimuth	352.39°



Actual Wellpath Report

POWERS 30N-27HZ AWP

Page 2 of 6



REFERENCE WELLPATH IDENTIFICATION

Operator	KERR-MCGEE OIL & GAS ONSHORE LP	Slot	SLOT#17 POWERS 30N-27HZ (510' FSL & 540' FWL, SEC.27)
Area	COLORADO	Well	POWERS 30N-27HZ
Field	WELD COUNTY (KERR MCGEE)	Wellbore	POWERS 30N-27HZ AWB
Facility	SEC.27-T2N-R65W		

WELLPATH DATA (128 stations) † = interpolated/extrapolated station

MD [ft]	Inclination [°]	Azimuth [°]	TVD [ft]	Vert Sect [ft]	North [ft]	East [ft]	Latitude	Longitude	DLS [°/100ft]	Comments
0.00†	0.000	86.490	0.00	0.00	0.00	0.00	40°06'13.392"N	104°39'26.442"W	0.00	
13.00	0.000	86.490	13.00	0.00	0.00	0.00	40°06'13.392"N	104°39'26.442"W	0.00	Tie-On
113.00	0.850	86.490	113.00	-0.05	0.05	0.74	40°06'13.392"N	104°39'26.432"W	0.85	Begin GYRO Surveys
213.00	0.940	121.520	212.98	-0.62	-0.34	2.18	40°06'13.389"N	104°39'26.414"W	0.55	
313.00	0.330	69.830	312.98	-1.08	-0.67	3.15	40°06'13.385"N	104°39'26.401"W	0.78	
413.00	0.640	121.160	412.98	-1.37	-0.86	3.90	40°06'13.384"N	104°39'26.392"W	0.50	
513.00	0.080	108.750	512.97	-1.75	-1.17	4.44	40°06'13.380"N	104°39'26.385"W	0.56	
613.00	0.510	139.910	612.97	-2.15	-1.53	4.79	40°06'13.377"N	104°39'26.380"W	0.44	
713.00	0.070	239.440	712.97	-2.55	-1.90	5.03	40°06'13.373"N	104°39'26.377"W	0.53	
813.00	0.450	185.780	812.97	-2.96	-2.32	4.94	40°06'13.369"N	104°39'26.378"W	0.41	
913.00	0.070	99.860	912.97	-3.36	-2.73	4.96	40°06'13.365"N	104°39'26.378"W	0.45	
1013.00	0.480	201.740	1012.97	-3.74	-3.13	4.86	40°06'13.361"N	104°39'26.379"W	0.50	
1113.00	0.040	135.780	1112.97	-4.14	-3.54	4.73	40°06'13.357"N	104°39'26.381"W	0.47	
1213.00	0.510	251.470	1212.96	-4.25	-3.71	4.33	40°06'13.355"N	104°39'26.386"W	0.53	
1313.00	0.040	11.390	1312.96	-4.30	-3.81	3.92	40°06'13.354"N	104°39'26.392"W	0.53	
1413.00	0.460	317.550	1412.96	-3.94	-3.48	3.65	40°06'13.358"N	104°39'26.395"W	0.44	
1513.00	0.180	218.350	1512.96	-3.72	-3.31	3.29	40°06'13.359"N	104°39'26.400"W	0.52	
1613.00	0.560	351.990	1612.96	-3.34	-2.95	3.12	40°06'13.363"N	104°39'26.402"W	0.70	
1713.00	0.110	352.480	1712.96	-2.75	-2.37	3.04	40°06'13.369"N	104°39'26.403"W	0.45	
1773.00	0.770	35.450	1772.96	-2.40	-1.98	3.27	40°06'13.372"N	104°39'26.400"W	1.16	Tie-Into GYRO Surveys
1878.00	0.700	358.300	1877.95	-1.25	-0.77	3.66	40°06'13.384"N	104°39'26.395"W	0.45	Begin BHI MWD+IFR Surveys
1972.00	0.900	6.800	1971.94	0.04	0.54	3.73	40°06'13.397"N	104°39'26.394"W	0.25	
2067.00	1.700	274.500	2066.92	1.06	1.39	2.41	40°06'13.406"N	104°39'26.411"W	2.06	
2162.00	3.500	264.600	2161.82	1.47	1.23	-1.88	40°06'13.404"N	104°39'26.466"W	1.95	
2257.00	1.700	229.900	2256.72	0.82	0.05	-5.85	40°06'13.392"N	104°39'26.517"W	2.44	
2447.00	5.700	239.400	2446.29	-4.38	-6.57	-16.13	40°06'13.327"N	104°39'26.650"W	2.12	
2542.00	7.080	234.490	2540.70	-8.96	-12.38	-24.96	40°06'13.270"N	104°39'26.763"W	1.56	
2638.00	8.380	231.080	2635.82	-15.36	-20.21	-35.21	40°06'13.192"N	104°39'26.895"W	1.44	
2732.00	9.890	225.290	2728.63	-23.79	-30.19	-46.28	40°06'13.094"N	104°39'27.038"W	1.88	
2828.00	11.260	225.550	2823.00	-34.39	-42.56	-58.83	40°06'12.971"N	104°39'27.199"W	1.43	
2923.00	13.090	227.580	2915.86	-46.09	-56.31	-73.40	40°06'12.836"N	104°39'27.387"W	1.98	
3019.00	13.560	226.340	3009.27	-58.92	-71.41	-89.56	40°06'12.686"N	104°39'27.595"W	0.57	
3114.00	13.460	224.540	3101.65	-72.25	-86.98	-105.38	40°06'12.532"N	104°39'27.798"W	0.45	
3210.00	13.320	227.900	3195.04	-85.37	-102.36	-121.42	40°06'12.380"N	104°39'28.005"W	0.82	
3304.00	13.240	228.210	3286.52	-97.55	-116.79	-137.48	40°06'12.238"N	104°39'28.211"W	0.11	
3399.00	13.390	228.410	3378.97	-109.81	-131.34	-153.82	40°06'12.094"N	104°39'28.421"W	0.17	
3494.00	13.840	224.760	3471.30	-122.89	-146.71	-170.04	40°06'11.942"N	104°39'28.630"W	1.02	
3588.00	13.670	224.100	3562.61	-136.64	-162.67	-185.69	40°06'11.784"N	104°39'28.832"W	0.25	
3683.00	14.330	228.740	3654.79	-150.11	-178.49	-202.34	40°06'11.628"N	104°39'29.046"W	1.37	
3777.00	14.710	224.720	3745.79	-163.85	-194.64	-219.48	40°06'11.469"N	104°39'29.267"W	1.15	
3872.00	12.530	224.150	3838.11	-177.60	-210.61	-235.15	40°06'11.311"N	104°39'29.468"W	2.30	
3968.00	13.120	226.920	3931.71	-190.36	-225.52	-250.36	40°06'11.163"N	104°39'29.664"W	0.89	
4063.00	13.290	229.240	4024.20	-202.59	-240.02	-266.51	40°06'11.020"N	104°39'29.872"W	0.59	
4158.00	14.670	231.350	4116.39	-214.76	-254.66	-284.18	40°06'10.875"N	104°39'30.099"W	1.55	
4252.00	15.300	231.530	4207.19	-227.26	-269.81	-303.18	40°06'10.726"N	104°39'30.344"W	0.67	



Actual Wellpath Report

POWERS 30N-27HZ AWP

Page 3 of 6



REFERENCE WELLPATH IDENTIFICATION

Operator	KERR-MCGEE OIL & GAS ONSHORE LP	Slot	SLOT#17 POWERS 30N-27HZ (510' FSL & 540' FWL, SEC.27)
Area	COLORADO	Well	POWERS 30N-27HZ
Field	WELD COUNTY (KERR MCGEE)	Wellbore	POWERS 30N-27HZ AWB
Facility	SEC.27-T2N-R65W		

WELLPATH DATA (128 stations)

MD [ft]	Inclination [°]	Azimuth [°]	TVD [ft]	Vert Sect [ft]	North [ft]	East [ft]	Latitude	Longitude	DLS [°/100ft]	Comments
4347.00	12.900	231.370	4299.32	-239.16	-284.23	-321.28	40°06'10.583"N	104°39'30.577"W	2.53	
4441.00	12.000	232.210	4391.11	-249.48	-296.77	-337.20	40°06'10.459"N	104°39'30.781"W	0.98	
4538.00	13.270	230.110	4485.76	-260.49	-310.09	-353.71	40°06'10.328"N	104°39'30.994"W	1.39	
4631.00	12.990	228.140	4576.33	-272.07	-323.91	-369.69	40°06'10.191"N	104°39'31.199"W	0.57	
4727.00	13.110	230.740	4669.85	-283.86	-338.00	-386.15	40°06'10.052"N	104°39'31.411"W	0.62	
4822.00	14.220	228.490	4762.16	-296.02	-352.55	-403.23	40°06'09.908"N	104°39'31.631"W	1.30	
4916.00	14.360	225.780	4853.25	-309.41	-368.33	-420.23	40°06'09.752"N	104°39'31.850"W	0.73	
5012.00	11.930	227.440	4946.73	-322.19	-383.34	-436.08	40°06'09.604"N	104°39'32.054"W	2.56	
5108.00	11.700	227.600	5040.70	-333.43	-396.62	-450.57	40°06'09.473"N	104°39'32.240"W	0.24	
5203.00	10.900	225.300	5133.86	-344.34	-409.43	-464.07	40°06'09.346"N	104°39'32.414"W	0.97	
5299.00	11.000	226.000	5228.11	-355.25	-422.18	-477.11	40°06'09.220"N	104°39'32.582"W	0.17	
5394.00	9.800	224.200	5321.55	-365.62	-434.27	-489.27	40°06'09.100"N	104°39'32.738"W	1.31	
5488.00	8.700	224.200	5414.32	-374.96	-445.10	-499.80	40°06'08.993"N	104°39'32.874"W	1.17	
5583.00	6.700	221.800	5508.46	-383.01	-454.39	-508.50	40°06'08.902"N	104°39'32.986"W	2.13	
5678.00	4.200	219.400	5603.02	-388.99	-461.21	-514.41	40°06'08.834"N	104°39'33.062"W	2.64	
5773.00	2.300	210.700	5697.87	-392.86	-465.54	-517.59	40°06'08.791"N	104°39'33.103"W	2.06	
5869.00	0.300	240.400	5793.84	-394.46	-467.32	-518.79	40°06'08.774"N	104°39'33.118"W	2.13	
5963.00	0.200	172.500	5887.84	-394.72	-467.60	-518.98	40°06'08.771"N	104°39'33.121"W	0.31	
6059.00	0.500	186.400	5983.84	-395.29	-468.18	-519.01	40°06'08.765"N	104°39'33.121"W	0.32	
6153.00	0.500	167.600	6077.83	-396.10	-468.99	-518.97	40°06'08.757"N	104°39'33.121"W	0.17	
6249.00	1.100	176.800	6173.82	-397.44	-470.32	-518.82	40°06'08.744"N	104°39'33.119"W	0.64	
6344.00	1.300	162.700	6268.80	-399.41	-472.26	-518.45	40°06'08.725"N	104°39'33.114"W	0.37	
6440.00	0.100	23.900	6364.79	-400.41	-473.22	-518.10	40°06'08.715"N	104°39'33.109"W	1.43	
6500.00	0.970	327.920	6424.79	-399.90	-472.75	-518.34	40°06'08.720"N	104°39'33.113"W	1.53	
6537.00	4.460	345.700	6461.74	-398.19	-471.09	-518.87	40°06'08.737"N	104°39'33.119"W	9.59	
6584.00	9.800	354.200	6508.36	-392.37	-465.33	-519.72	40°06'08.793"N	104°39'33.130"W	11.55	
6631.00	15.300	357.600	6554.22	-382.19	-455.15	-520.39	40°06'08.894"N	104°39'33.139"W	11.80	
6678.00	19.200	358.600	6599.10	-368.33	-441.22	-520.84	40°06'09.032"N	104°39'33.145"W	8.32	
6725.00	22.900	359.300	6642.96	-351.56	-424.34	-521.14	40°06'09.199"N	104°39'33.148"W	7.89	
6772.00	25.800	359.200	6685.77	-332.32	-404.97	-521.39	40°06'09.390"N	104°39'33.152"W	6.17	
6820.00	28.900	0.800	6728.40	-310.47	-382.92	-521.37	40°06'09.608"N	104°39'33.152"W	6.64	
6867.00	33.000	2.300	6768.70	-286.62	-358.77	-520.70	40°06'09.847"N	104°39'33.143"W	8.88	
6915.00	38.300	2.600	6807.69	-259.08	-330.83	-519.50	40°06'10.123"N	104°39'33.127"W	11.05	
6962.00	42.800	1.200	6843.40	-228.95	-300.30	-518.51	40°06'10.424"N	104°39'33.115"W	9.77	
7010.00	47.000	0.500	6877.39	-195.45	-266.43	-518.01	40°06'10.759"N	104°39'33.108"W	8.81	
7057.00	50.500	359.800	6908.37	-160.44	-231.10	-517.92	40°06'11.108"N	104°39'33.107"W	7.53	
7105.00	53.900	359.700	6937.79	-122.83	-193.17	-518.09	40°06'11.483"N	104°39'33.109"W	7.09	
7152.00	57.800	359.800	6964.17	-84.26	-154.29	-518.26	40°06'11.867"N	104°39'33.112"W	8.30	
7200.00	63.100	358.800	6987.83	-42.83	-112.55	-518.78	40°06'12.280"N	104°39'33.118"W	11.19	
7247.00	66.300	358.800	7007.92	-0.61	-70.07	-519.67	40°06'12.699"N	104°39'33.130"W	6.81	
7295.00	70.300	359.100	7025.66	43.69	-25.49	-520.48	40°06'13.140"N	104°39'33.140"W	8.35	
7342.00	73.600	358.500	7040.22	88.09	19.18	-521.42	40°06'13.581"N	104°39'33.152"W	7.13	
7391.00	77.300	359.500	7052.53	135.20	66.59	-522.25	40°06'14.050"N	104°39'33.163"W	7.81	
7438.00	80.000	359.700	7061.78	180.91	112.67	-522.57	40°06'14.505"N	104°39'33.167"W	5.76	
7486.00	84.300	0.300	7068.33	228.03	160.21	-522.57	40°06'14.975"N	104°39'33.167"W	9.04	



Actual Wellpath Report

POWERS 30N-27HZ AWP

Page 4 of 6



REFERENCE WELLPATH IDENTIFICATION

Operator	KERR-MCGEE OIL & GAS ONSHORE LP	Slot	SLOT#17 POWERS 30N-27HZ (510' FSL & 540' FWL, SEC.27)
Area	COLORADO	Well	POWERS 30N-27HZ
Field	WELD COUNTY (KERR MCGEE)	Wellbore	POWERS 30N-27HZ AWB
Facility	SEC.27-T2N-R65W		

WELLPATH DATA (128 stations) † = interpolated/extrapolated station

MD [ft]	Inclination [°]	Azimuth [°]	TVD [ft]	Vert Sect [ft]	North [ft]	East [ft]	Latitude	Longitude	DLS [°/100ft]	Comments
7502.00	86.300	0.700	7069.64	243.81	176.15	-522.43	40°06'15.133"N	104°39'33.165"W	12.75	
7544.00†	87.330	0.819	7071.98	285.30	218.08	-521.87	40°06'15.547"N	104°39'33.158"W	2.47	7" Casing Point
7608.00	88.900	1.000	7074.08	348.56	282.04	-520.86	40°06'16.179"N	104°39'33.145"W	2.47	
7704.00	88.900	1.200	7075.93	443.43	378.00	-519.01	40°06'17.127"N	104°39'33.121"W	0.21	
7800.00	88.900	1.000	7077.77	538.31	473.97	-517.17	40°06'18.076"N	104°39'33.098"W	0.21	
7894.00	89.400	1.500	7079.16	631.17	567.93	-515.12	40°06'19.004"N	104°39'33.071"W	0.75	
7988.00	88.800	0.900	7080.64	724.05	661.90	-513.15	40°06'19.933"N	104°39'33.046"W	0.90	
8083.00	87.900	0.600	7083.37	818.00	756.85	-511.91	40°06'20.871"N	104°39'33.030"W	1.00	
8178.00	89.100	1.400	7085.86	911.90	851.80	-510.25	40°06'21.810"N	104°39'33.009"W	1.52	
8274.00	91.100	0.000	7085.69	1006.88	947.79	-509.08	40°06'22.758"N	104°39'32.994"W	2.54	
8369.00	90.700	359.100	7084.20	1101.12	1042.77	-509.82	40°06'23.697"N	104°39'33.003"W	1.04	
8465.00	91.000	359.100	7082.78	1196.46	1138.75	-511.33	40°06'24.645"N	104°39'33.023"W	0.31	
8560.00	90.500	359.300	7081.53	1290.78	1233.73	-512.66	40°06'25.584"N	104°39'33.040"W	0.57	
8655.00	90.300	358.900	7080.87	1385.12	1328.72	-514.15	40°06'26.523"N	104°39'33.059"W	0.47	
8749.00	90.300	358.700	7080.38	1478.53	1422.70	-516.12	40°06'27.451"N	104°39'33.084"W	0.21	
8845.00	90.200	358.800	7079.96	1573.94	1518.67	-518.21	40°06'28.400"N	104°39'33.111"W	0.15	
8939.00	89.900	358.800	7079.88	1667.35	1612.65	-520.18	40°06'29.328"N	104°39'33.137"W	0.32	
9034.00	90.300	359.200	7079.71	1761.72	1707.64	-521.84	40°06'30.267"N	104°39'33.158"W	0.60	
9129.00	92.400	357.000	7077.47	1856.21	1802.55	-524.99	40°06'31.205"N	104°39'33.199"W	3.20	
9224.00	90.600	357.500	7074.99	1950.83	1897.40	-529.54	40°06'32.142"N	104°39'33.257"W	1.97	
9319.00	90.500	357.100	7074.07	2045.48	1992.29	-534.02	40°06'33.080"N	104°39'33.315"W	0.43	
9415.00	89.500	356.200	7074.07	2141.21	2088.12	-539.63	40°06'34.027"N	104°39'33.387"W	1.40	
9510.00	90.400	356.800	7074.16	2235.96	2182.95	-545.43	40°06'34.964"N	104°39'33.462"W	1.14	
9605.00	91.100	358.500	7072.91	2330.55	2277.85	-549.32	40°06'35.902"N	104°39'33.512"W	1.94	
9795.00	90.900	358.100	7069.60	2519.51	2467.74	-554.96	40°06'37.778"N	104°39'33.585"W	0.24	
9985.00	91.000	358.400	7066.45	2708.49	2657.63	-560.76	40°06'39.655"N	104°39'33.659"W	0.17	
10174.00	89.800	357.900	7065.13	2896.53	2846.52	-566.86	40°06'41.522"N	104°39'33.738"W	0.69	
10364.00	90.800	0.400	7064.13	3085.18	3036.48	-569.68	40°06'43.399"N	104°39'33.774"W	1.42	
10554.00	92.500	0.100	7058.66	3273.31	3226.39	-568.85	40°06'45.276"N	104°39'33.764"W	0.91	
10651.00	91.500	359.300	7055.28	3369.46	3323.33	-569.36	40°06'46.234"N	104°39'33.770"W	1.32	
10746.00	92.000	0.000	7052.38	3463.66	3418.28	-569.94	40°06'47.172"N	104°39'33.778"W	0.91	
10842.00	91.200	0.400	7049.70	3558.73	3514.24	-569.60	40°06'48.120"N	104°39'33.773"W	0.93	
11031.00	91.700	0.700	7044.91	3745.75	3703.17	-567.79	40°06'49.987"N	104°39'33.750"W	0.31	
11126.00	90.100	1.000	7043.42	3839.70	3798.15	-566.38	40°06'50.926"N	104°39'33.732"W	1.71	
11316.00	90.700	0.900	7042.09	4027.58	3988.11	-563.23	40°06'52.803"N	104°39'33.691"W	0.32	
11505.00	91.400	0.700	7038.63	4214.51	4177.06	-560.59	40°06'54.670"N	104°39'33.658"W	0.39	
11527.00	91.500	1.000	7038.07	4236.26	4199.05	-560.27	40°06'54.888"N	104°39'33.653"W	1.44	Last BHI MWD+IFR Surveys
11592.00	91.500	1.000	7036.37	4300.51	4264.02	-559.13	40°06'55.530"N	104°39'33.639"W	0.00	Projection to Bit



Actual Wellpath Report

POWERS 30N-27HZ AWP

Page 5 of 6



REFERENCE WELLPATH IDENTIFICATION			
Operator	KERR-MCGEE OIL & GAS ONSHORE LP	Slot	SLOT#17 POWERS 30N-27HZ (510' FSL & 540' FWL, SEC.27)
Area	COLORADO	Well	POWERS 30N-27HZ
Field	WELD COUNTY (KERR MCGEE)	Wellbore	POWERS 30N-27HZ AWB
Facility	SEC.27-T2N-R65W		

HOLE & CASING SECTIONS - Ref Wellbore: POWERS 30N-27HZ AWB Ref Wellpath: POWERS 30N-27HZ AWP									
String/Diameter	Start MD [ft]	End MD [ft]	Interval [ft]	Start TVD [ft]	End TVD [ft]	Start N/S [ft]	Start E/W [ft]	End N/S [ft]	End E/W [ft]
13.5in Open Hole	13.00	1842.00	1829.00	13.00	1841.95	0.00	0.00	-1.20	3.62
9.625in Casing Surface	13.00	1842.00	1829.00	13.00	1841.95	0.00	0.00	-1.20	3.62
8.75in Open Hole	1842.00	7555.00	5713.00	1841.95	7072.46	-1.20	3.62	229.07	-521.71
7in Casing Intermediate	13.00	7544.00	7531.00	13.00	7071.98	0.00	0.00	218.08	-521.87
6.125in Open Hole	7544.00	11592.00	4048.00	7071.98	7036.37	218.08	-521.87	4264.02	-559.13

TARGETS									
Name	MD [ft]	TVD [ft]	North [ft]	East [ft]	Grid East [US ft]	Grid North [US ft]	Latitude	Longitude	Shape
SECTION 27 LINES		-19.00	-7.66	1320.06	3237030.25	1281754.37	40°06'13.316"N	104°39'09.454"W	polygon
POWERS 30N-27HZ BHL ON PLAT REV-1 (460' FNL & 20' FWL, SEC.27)		7057.00	4289.56	-573.37	3235096.16	1286033.23	40°06'55.782"N	104°39'33.822"W	point
POWERS 30N-27HZ LAND BOX		7057.00	0.00	0.00	3235710.24	1281749.48	40°06'13.392"N	104°39'26.442"W	polygon
SECTION 27 HARD LINES (460' SETBACKS)		7254.00	-7.66	1320.06	3237030.25	1281754.37	40°06'13.316"N	104°39'09.454"W	polygon

WELLPATH COMPOSITION - Ref Wellbore: POWERS 30N-27HZ AWB Ref Wellpath: POWERS 30N-27HZ AWP				
Start MD [ft]	End MD [ft]	Positional Uncertainty Model	Log Name/Comment	Wellbore
13.00	1773.00	Generic gyro - continuous (Standard)	MS GYRO SURVEY <113-1773>	POWERS 30N-27HZ AWB
1773.00	7502.00	NaviTrak (MAGCORR,IFR)	BHI MWD+IFR SURVEYS 8 3/4" HOLE <1878-7502>	POWERS 30N-27HZ AWB
7502.00	11527.00	OnTrak (MAGCORR,IFR)	BHI MWD+IFR SURVEYS 6 1/8" HOLE <7608-11505>	POWERS 30N-27HZ AWB
11527.00	11592.00	Blind Drilling (std)	Projection to bit	POWERS 30N-27HZ AWB



Actual Wellpath Report

POWERS 30N-27HZ AWP

Page 6 of 6



REFERENCE WELLPATH IDENTIFICATION

Operator	KERR-MCGEE OIL & GAS ONSHORE LP	Slot	SLOT#17 POWERS 30N-27HZ (510' FSL & 540' FWL, SEC.27)
Area	COLORADO	Well	POWERS 30N-27HZ
Field	WELD COUNTY (KERR MCGEE)	Wellbore	POWERS 30N-27HZ AWB
Facility	SEC.27-T2N-R65W		

WELLPATH COMMENTS

MD [ft]	Inclination [°]	Azimuth [°]	TVD [ft]	Comment
13.00	0.000	86.490	13.00	Tie-On
113.00	0.850	86.490	113.00	Begin GYRO Surveys
1773.00	0.770	35.450	1772.96	Tie-Into GYRO Surveys
1878.00	0.700	358.300	1877.95	Begin BHI MWD+IFR Surveys
7544.00	87.330	0.819	7071.98	7" Casing Point
11527.00	91.500	1.000	7038.07	Last BHI MWD+IFR Surveys
11592.00	91.500	1.000	7036.37	Projection to Bit