

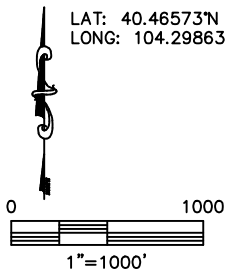
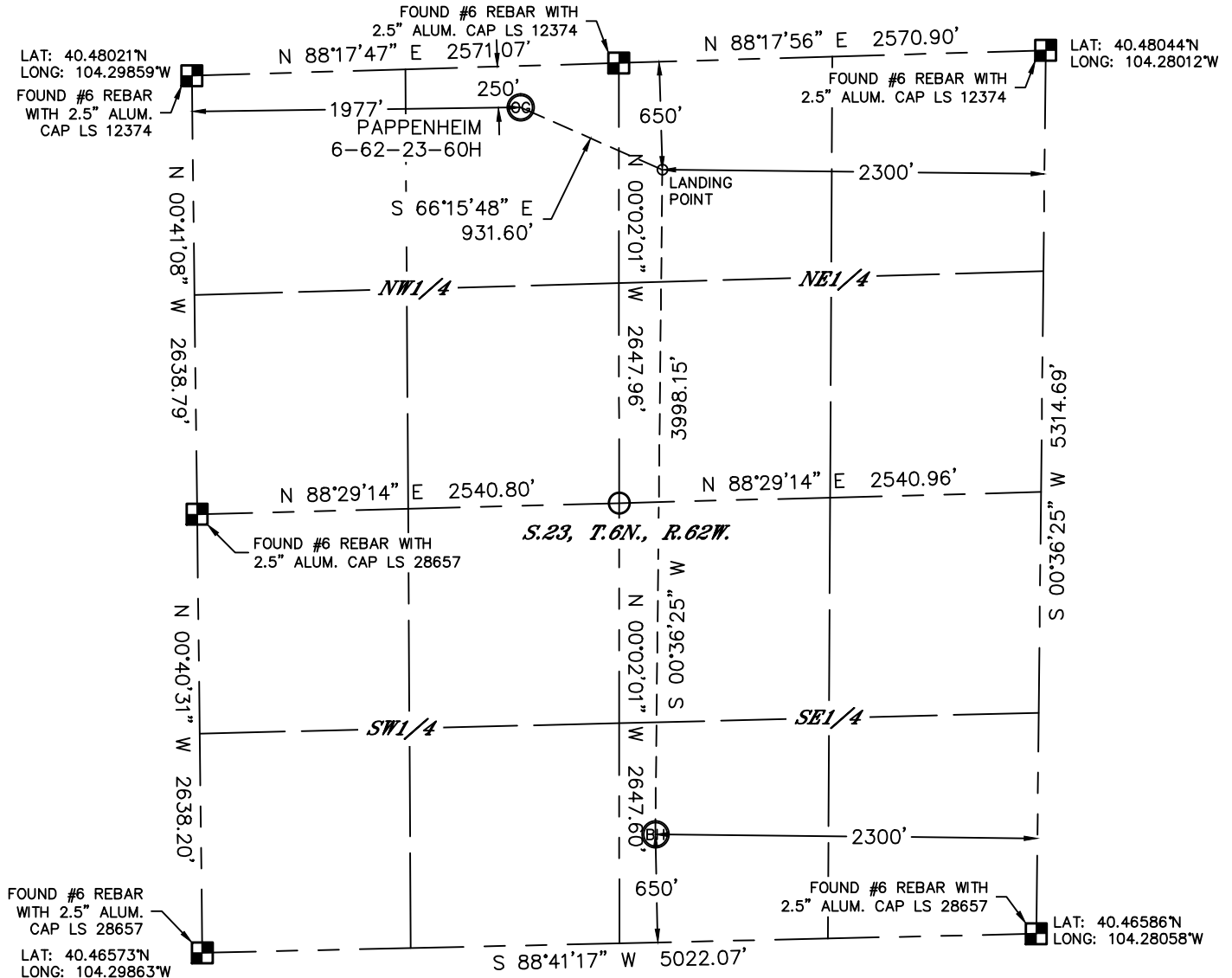


Lat40°, Inc. 1635 Foxtrail Drive, Suite 325 Loveland, CO 970-776-3321

# WELL LOCATION CERTIFICATE

THIS MAP DOES NOT REPRESENT A BOUNDARY SURVEY

SECTION: 23  
TOWNSHIP: 6N  
RANGE: 62W



In accordance with a request from Jeff Fandrich with BILL BARRETT CORPORATION Lat40°, Inc. has determined the surface location of the PAPPENHEIM 6-62-23-60H to be 250' from the NORTH line and 1977' from the WEST line and the bottom hole to be 650' from the SOUTH line and 2300' from the EAST line as measured at right angles from the section lines of Section 23, Township 6 North, Range 62 West of the Sixth Principal Meridian, County of Weld, State of Colorado.

I hereby state that this Well Location Certificate was prepared by me, or under my direct supervision, that the fieldwork was completed on 2/7/2013, for and on behalf of BILL BARRETT CORPORATION That this is not a Land Survey Plat or an Improvement Survey Plat, and that it is not to be relied upon for establishment of fence, building, or other future improvement lines.

## NOTE:

- 1) Bearings shown are Grid Bearings of the Colorado State Plane Coordinate System, North Zone, North American Datum 1983/2007. The lineal dimensions as contained herein are based upon the "U.S. Survey Foot."
- 2) Ground elevations are based on an observed GPS elevation (NAVD 1988 DATUM).
- 3) IMPROVEMENTS: See LOCATION DRAWING for all visible improvements within 400' of disturbed area.
- 4) SURFACE USE: RANGELAND
- 5) INSTRUMENT OPERATOR: WYATT HALL

## NOTE

According to Colorado law, you must commence any legal action based upon any defect in this W.L.C. within three years after you discover such defect. In no event, may any action based upon any defect in this survey be commenced more than ten years after the date of the certificate shown hereon. (13-80-105 C.R.S.)

## SURFACE LOCATION

LAT: 40.47961°N (40°28'46.6"N)  
LONG: 104.29149°W (104°17'29.4"W)  
LAT: 40.47963°N (NAD27)  
LONG: 104.29099°W (NAD27)  
PDOP: 1.6  
ELEV: 4699'

1/4, 1/4: NE1/4NW1/4

NEAREST PROPERTY LINE: 250' NORTH

## LANDING POINT

LAT: 40.47855°N (40°28'42.8"N)  
LONG: 104.28845°W (104°17'18.4"W)  
LAT: 40.47857°N (NAD27)  
LONG: 104.28794°W (NAD27)

## BOTTOM HOLE

LAT: 40.46758°N (40°28'03.3"N)  
LONG: 104.28879°W (104°17'19.7"W)  
LAT: 40.46760°N (NAD27)  
LONG: 104.28829°W (NAD27)

## LEGEND

- = ALIQUOT MONUMENT AS DESCRIBED
- = CALCULATED POSITION

Kyle E. Rutz—On behalf of Lat40°  
Colorado Licensed Professional Land Surveyor  
Land Surveyor No. 38307  
PROJECT#: 2013018

