

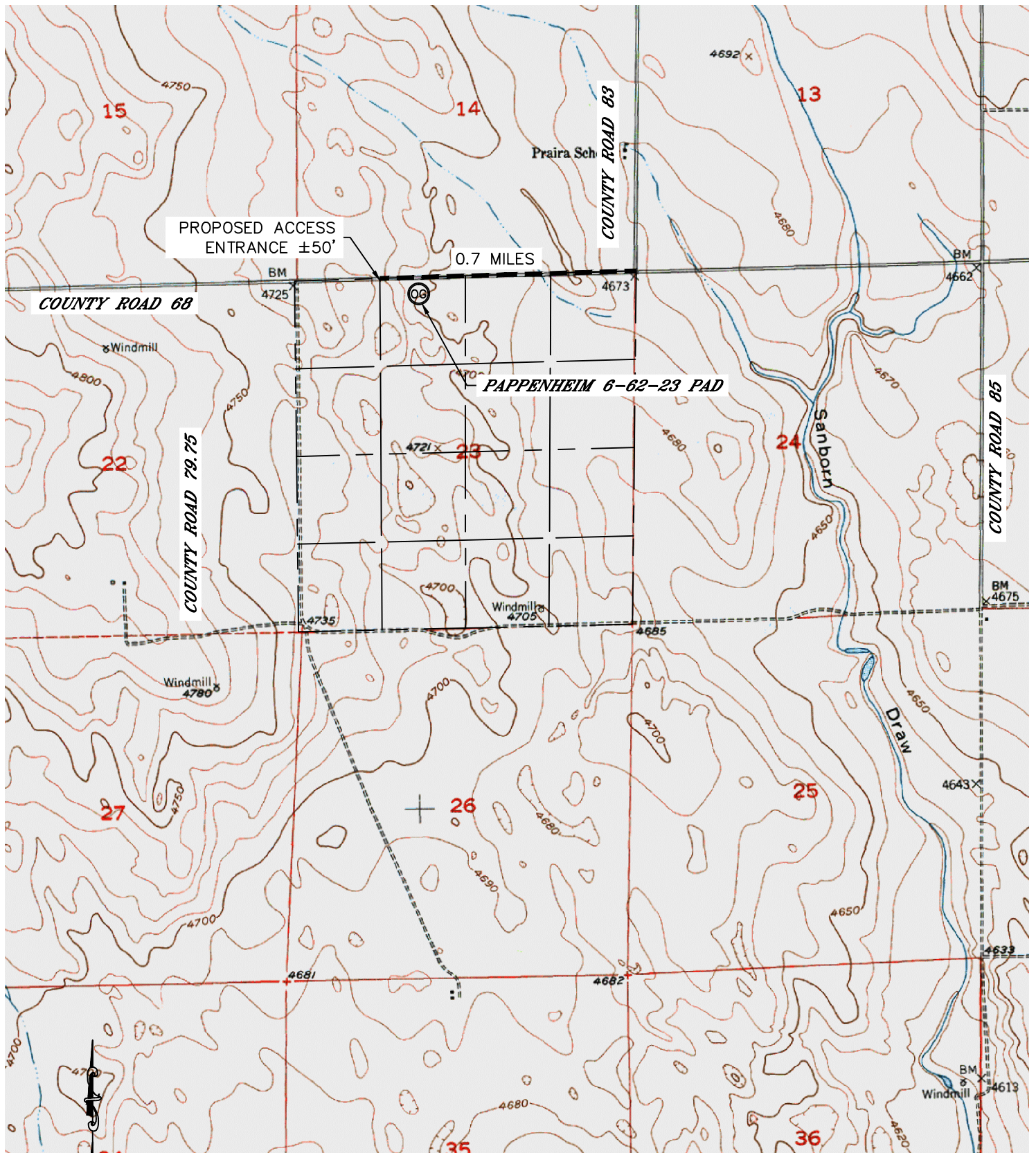


Lat40°, Inc. 1635 Foxtrail Drive, Suite 325 Loveland, CO 970-776-3321

ACCESS ROAD MAP-A

PAPPENHEIM 6-62-23 PAD

SECTION: 23
TOWNSHIP: 6N
RANGE: 62W



DIRECTIONS:

FROM THE INTERSECTION OF COUNTY ROAD 83 & COUNTY ROAD 68 GO WEST 0.7 MILE ON COUNTY ROAD 68 TO PROPOSED ACCESS ROAD TO THE SOUTH.

DATE: 2/25/2013
PROJECT#: 2013018

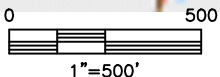
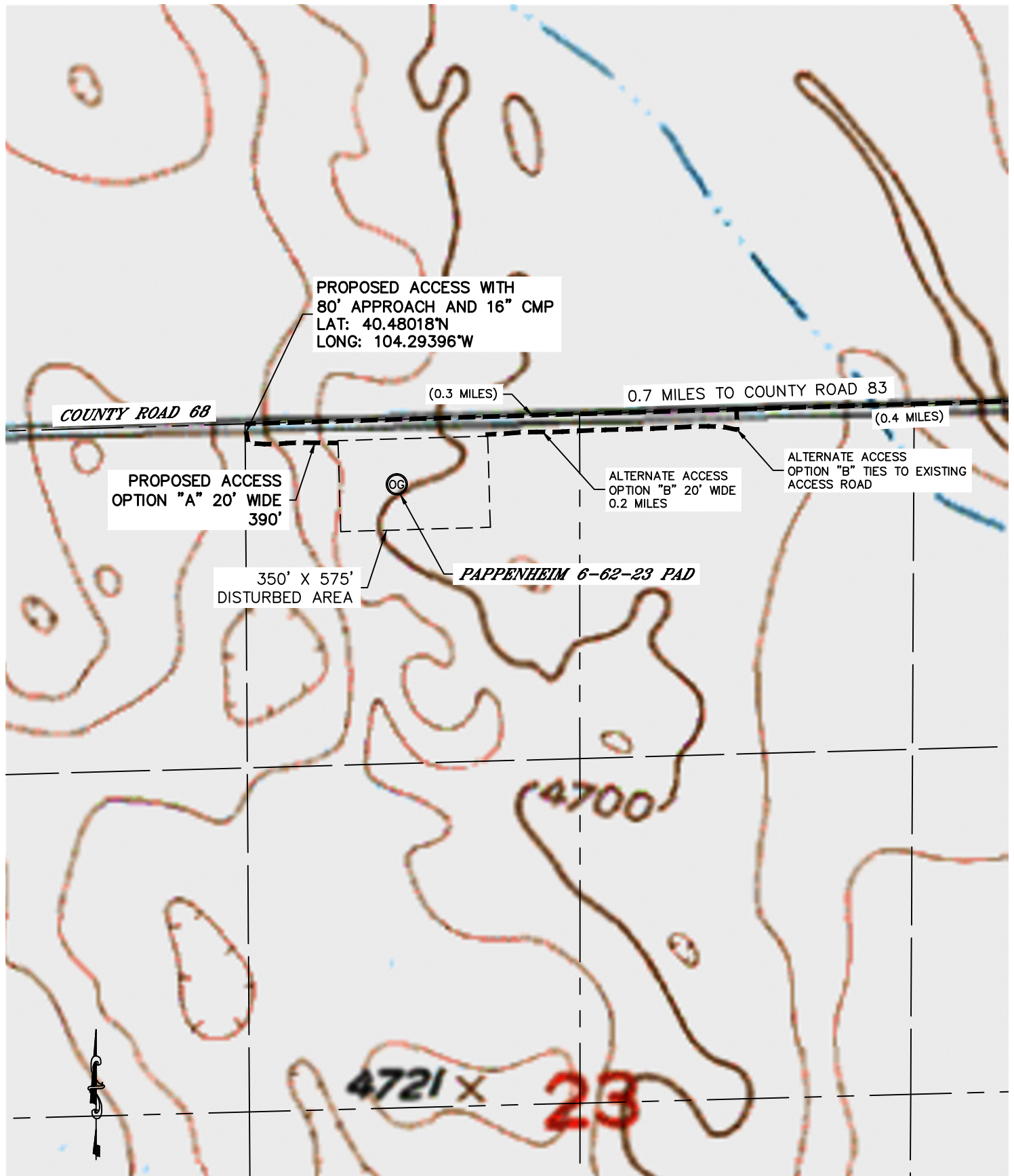


Lat40°, Inc. 1635 Foxtrail Drive, Suite 325 Loveland, CO 970-776-3321

ACCESS ROAD MAP-B

PAPPENHEIM 6-62-23 PAD

SECTION: 23
TOWNSHIP: 6N
RANGE: 62W



PROPOSED PERMANENT ACCESS WILL BE A CLAY BASE WITH A 1.5" GRAVEL TOP 20' WIDE BUILT TO BLM GOLD BOOK STANDARDS. THE MAXIMUM GRADE WILL NOT EXCEED 6%.

DATE: 2/25/2013
PROJECT#: 2013018



Lat40°, Inc. 1635 Foxtrail Drive, Suite 325 Loveland, CO 970-776-3321

ACCESS PICTURES

PAPPENHEIM 6-62-23 PAD

SECTION: 23
TOWNSHIP: 6N
RANGE: 62W

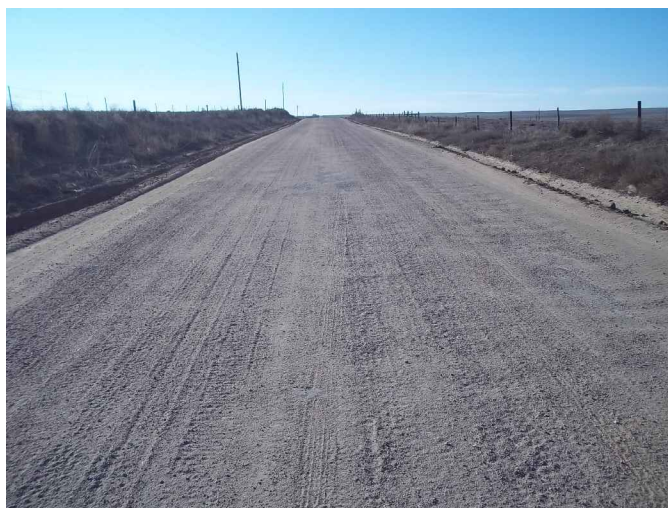
DATE: 2/7/2013



VIEW EAST (CR 68)



VIEW SOUTH



VIEW WEST (CR 68)

DATE: 2/25/2013
PROJECT#: 2013018