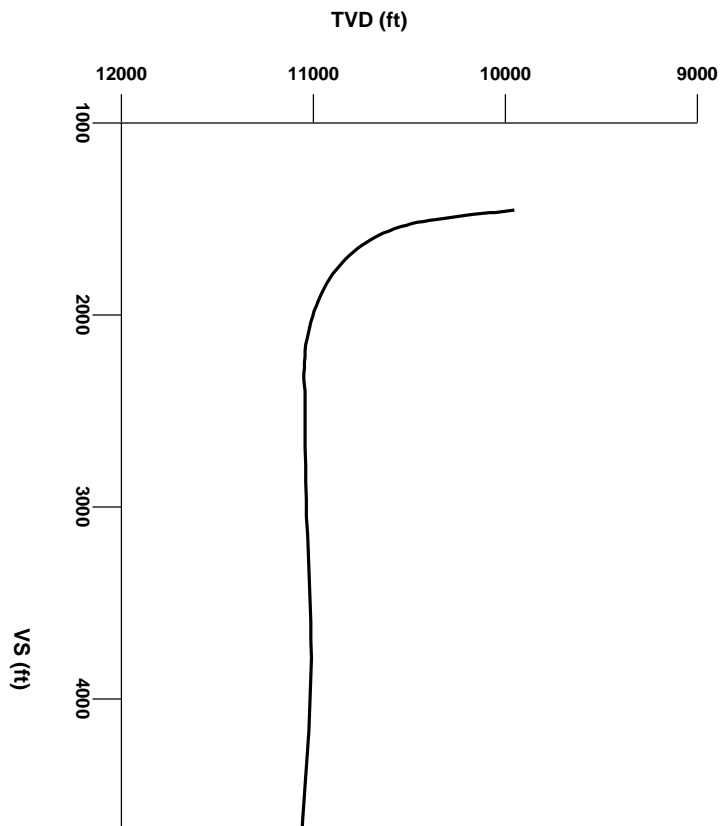


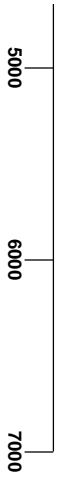
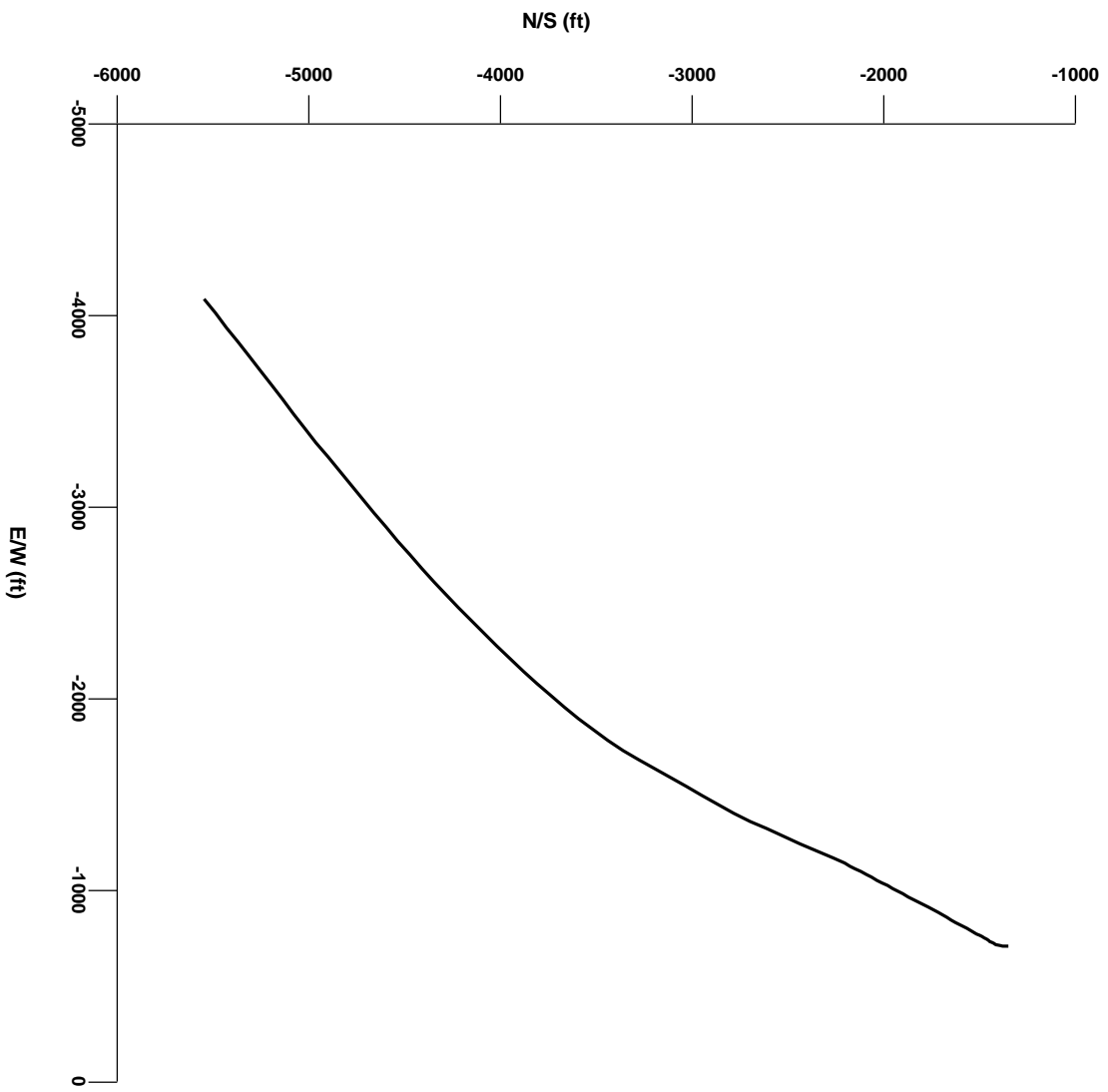
LOG created using Lplot VH Version 3.0, August 24, 2012, Copyright (C) 1999-2009 Pason Systems Corp.

**OPERATOR:** AXIA ENERGY  
**WELL:** BULLDOG 20-12H-892  
**LOCATION:** SWNW SEC. 20, T8N, R92W  
**COUNTY:** MOFFAT  
**STATE:** COLORADO  
**SPOT:** 1641' FNL 712' FWL  
**ELEVATION:** 6841' GL 6873' KB  
**FIELD:** WILDCAT  
**SPUD DATE:** JULY 21, 2012  
**TD DATE:** AUGUST 24, 2012  
**DATES LOGGED:** 8/11/12 - 8/24/12  
**DEPTHS LOGGED:** 10200' - 16870'  
**GEOLOGISTS:** ELIZABETH RECKS, PETER RECKS  
**DRILLING FLUID:** MEGADRIL OIL-BASED MUD  
**DRILLING RIG:** PATTERSON-UTI DRILLING #326  
**API:** 05-081-07729-0000  
**LOG TYPE:** HORIZONTAL  
**SCALE:** 1:240 (5 inches per 100 feet)  
**REMARKS:** RIG SUPERVISORS: ORACIO SANCHEZ, NORMAN McCREARY  
  
**AXIA GEOLOGISTS:** BRIAN BERWICK, JIM MINELLI



**Survey Elevation**

Survey Plan



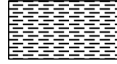
### LITHOLOGIES



No Sample



Nothing



Shale

### ENGINEERING SYMBOLS



Bit Change



Connection



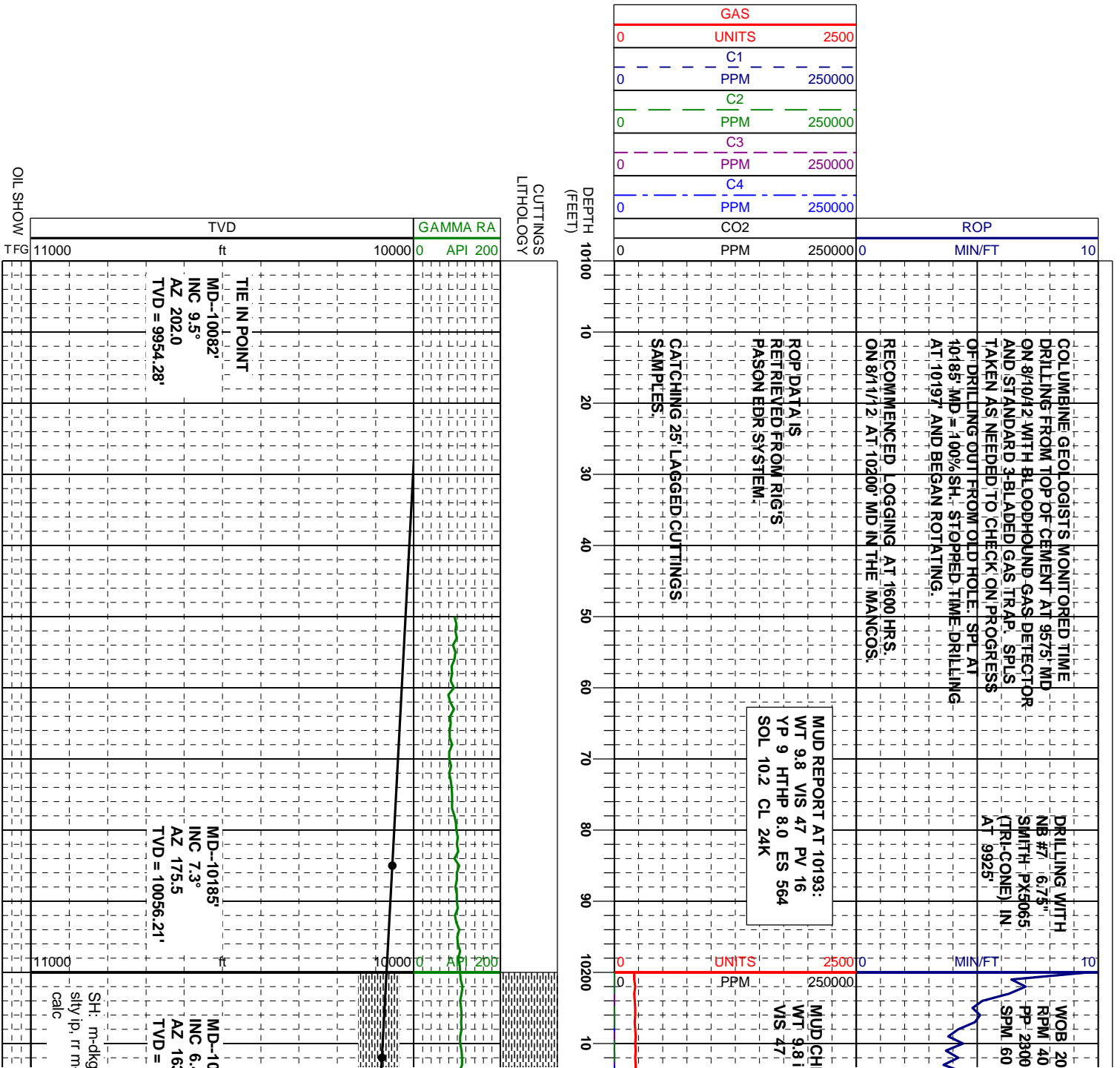
Gas Show



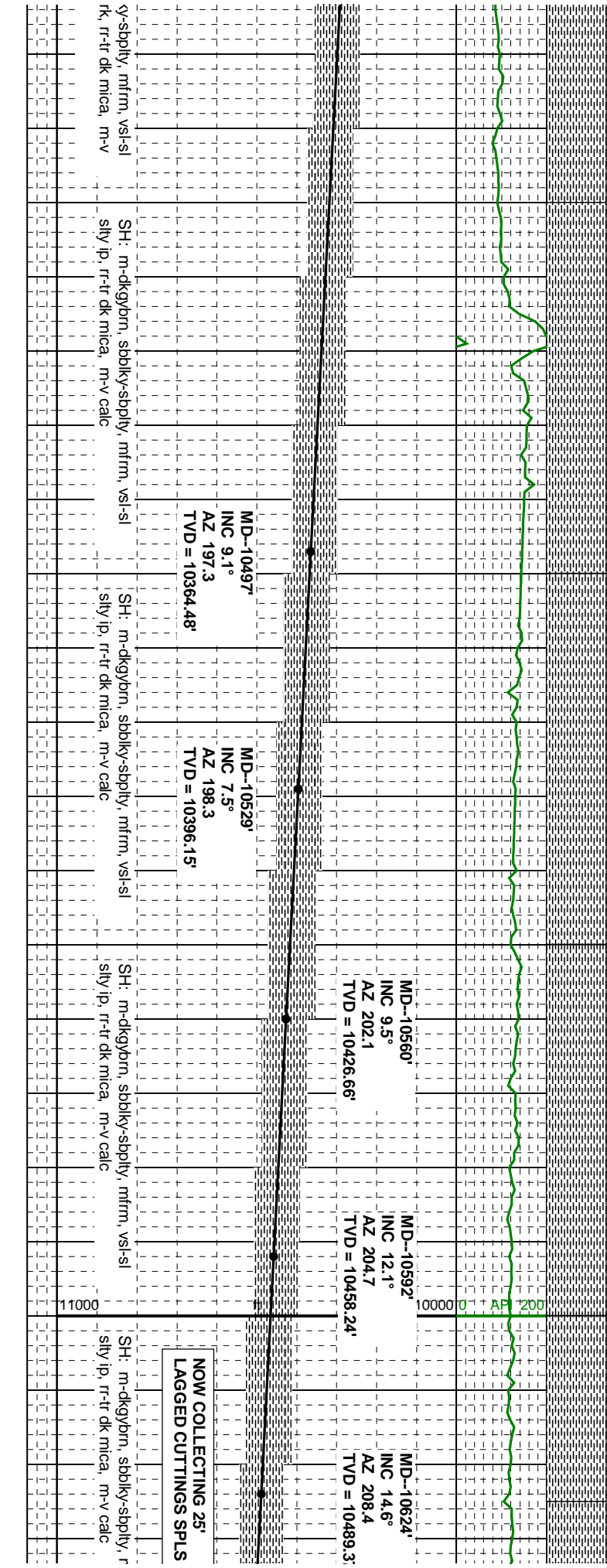
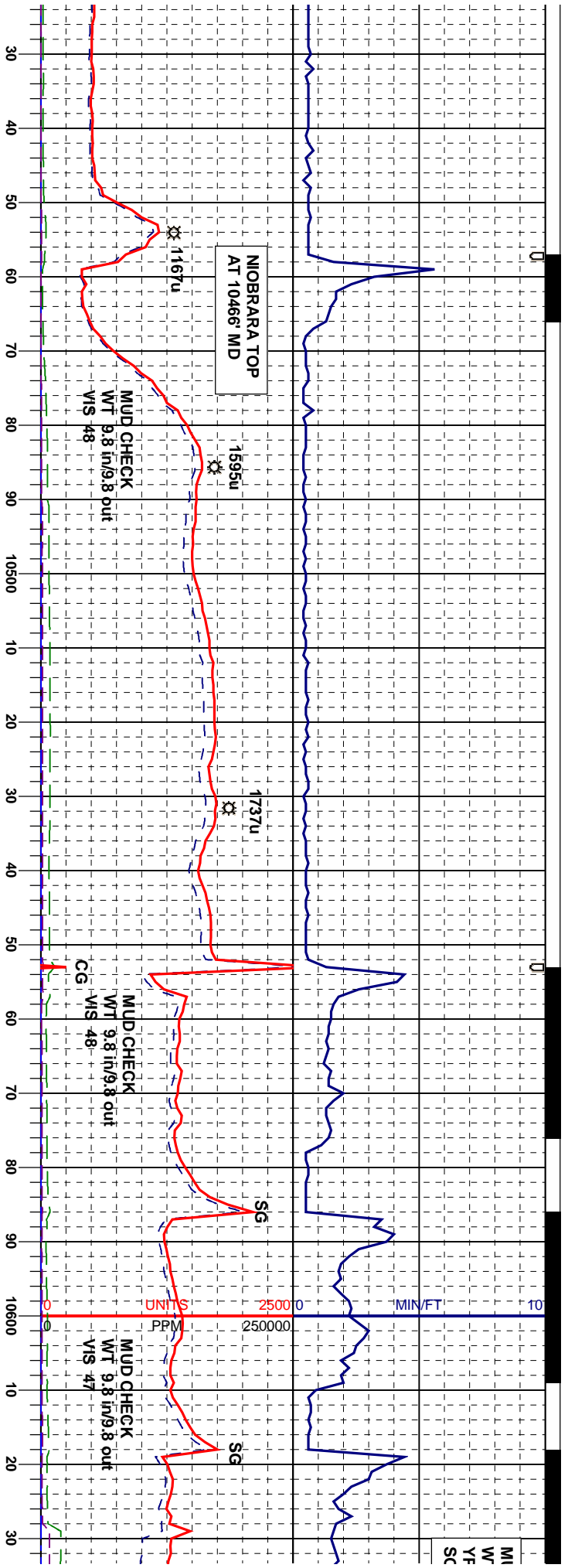
Midnight Depth



Arrow



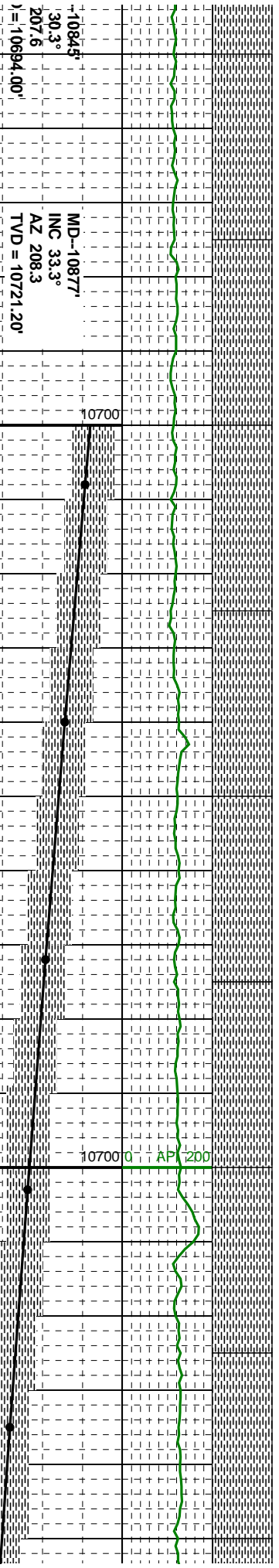
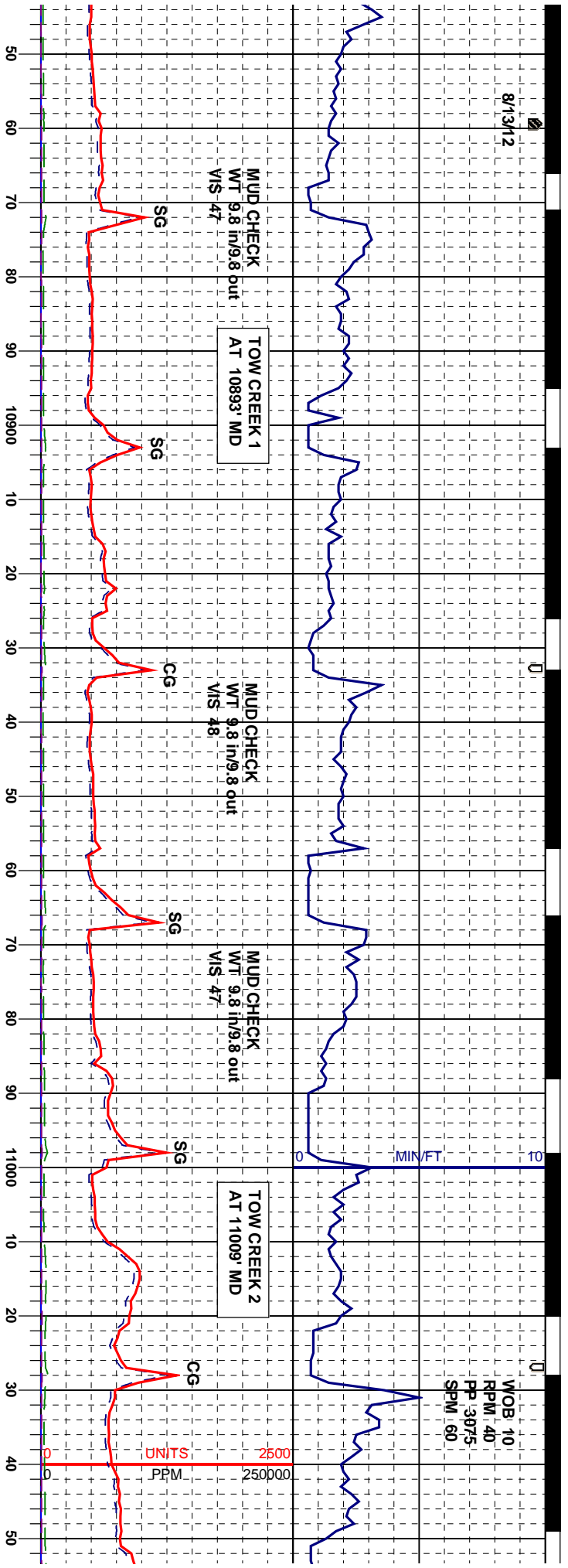






8/13/12

WOB 10  
RPM 40  
PP 3075  
SPM 60

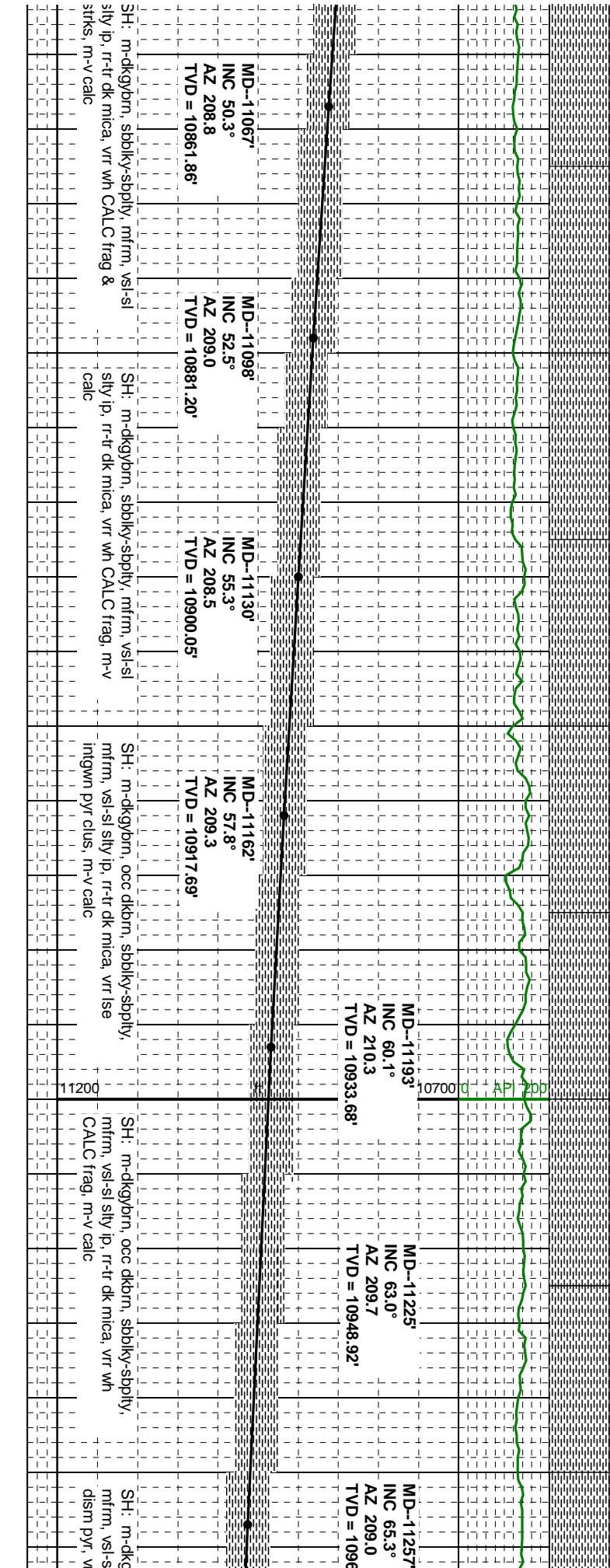
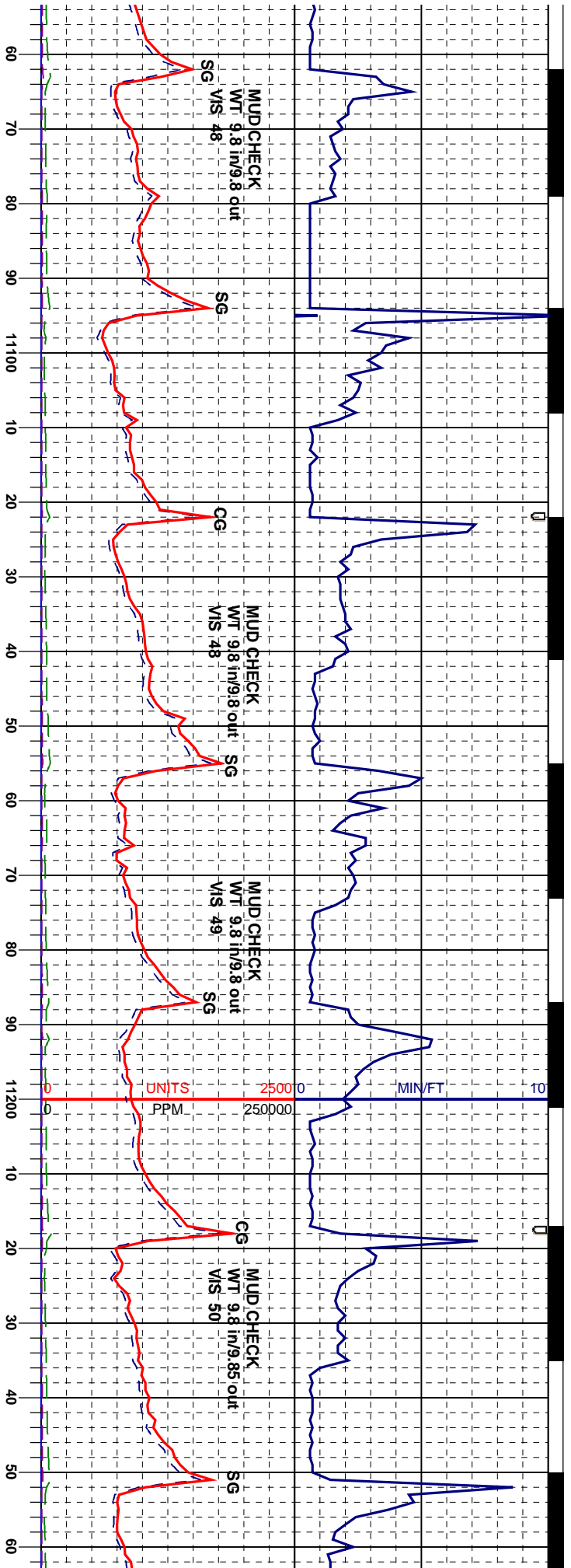


SH: m-dkgybrn, sbblky-sbply, mfrm, vsi-si  
sily ip, rr-tr dk mica, rr wh CALC frag & strk, m-v calc

SH: m-dkgybrn, sbblky-sbply, mfrm, vsi-si  
sily ip, rr-tr dk mica, vrr wh CALC frag, m-v calc

SH: m-dkgybrn, sbblky-sbply, mfrm, vsi-si  
sily ip, rr-tr dk mica, vrr wh CALC strk, m-v calc

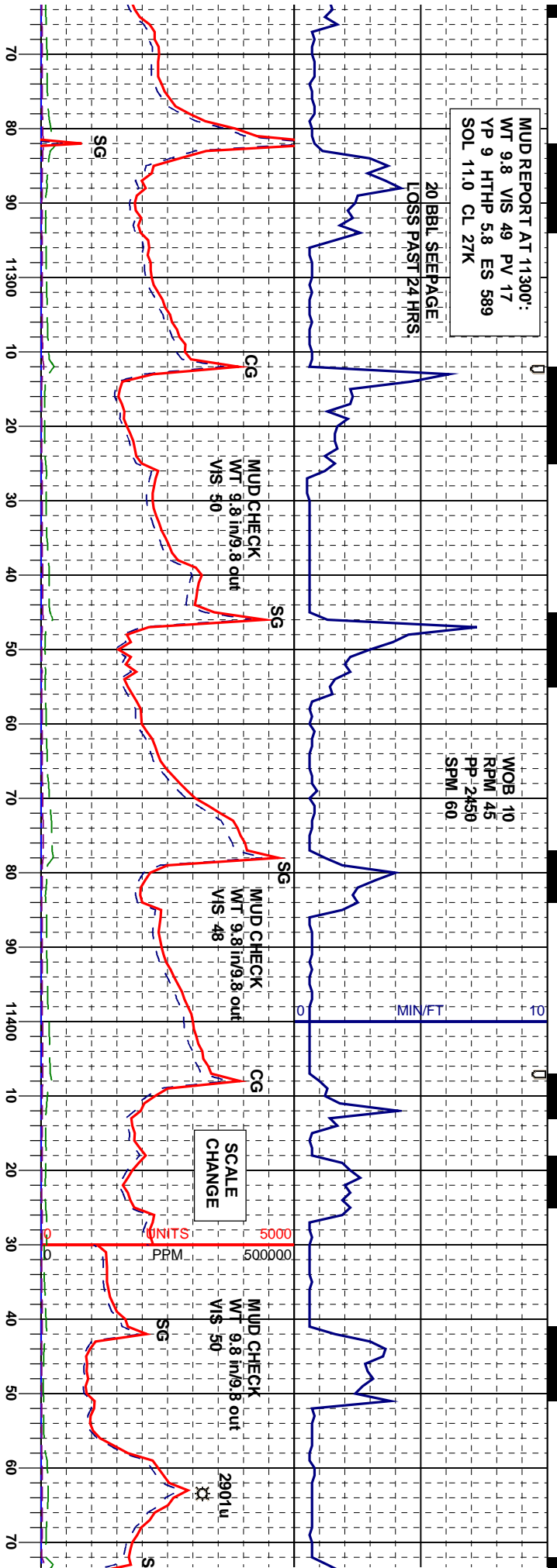
SH: m-dkgybrn, sbblky-sbply, mfrm, vsi-si  
sily ip, rr-tr dk mica, m-v calc



MUDREPORT AT 11300':  
 WT 9.8 VIS 49 PV 17  
 YP 9 HTHP 5.8 ES 589  
 SOL 11.0 CL 27K

20 BBL SEEPAGE:  
 LOSS PAST 24 HRS:

WOB 10  
 RPM 45  
 PP 2450  
 SPM 60



MD	INC	AZ	TVD
MD--11288'	INC 68.0°	AZ 208.2	TVD = 10975.16'
MD--11320'	INC 70.4°	AZ 207.6	TVD = 10986.52'
MD--11352'	INC 72.3°	AZ 207.1	TVD = 10996.76'
MD--11383'	INC 74.0°	AZ 206.5	TVD = 11005.74'
MD--11415'	INC 74.7°	AZ 207.4	TVD = 11014.37'
MD--11447'	INC 76.1°	AZ 207.4	TVD = 11022.44'

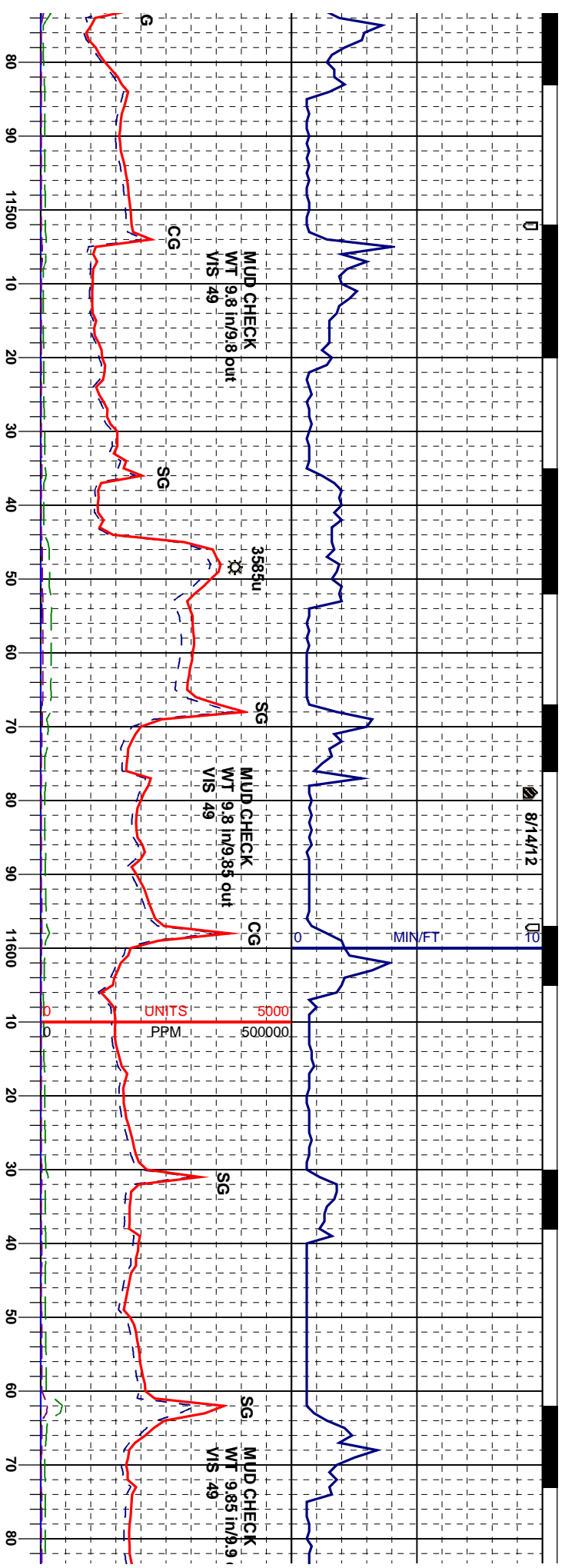
11200 ft

SH: m-dkgybrn, occ dkbrn, sbblky-spply, mlfm, vs-sl sily ip, rr-tr dk mica, vr wh CALC frag, m-v calc

SH: m-dkgybrn, occ dkbrn, sbblky-spply, mlfm, vs-sl sily ip, rr-tr dk mica, vr wh CALC frag, m-v calc

SH: m-dkgybrn, occ dkbrn, sbblky-spply, mlfm, vs-sl sily ip, rr-tr dk mica, vr wh CALC frag, m-v calc

SH: m-dkgybrn, occ dkbrn, sbblky-spply, mlfm, vs-sl sily ip, rr-tr dk mica, vr wh CALC frag, m-v calc



MD--11478' INC 77.6° AZ 208.0 TVD = 11029.49'	MD--11510' INC 79.8° AZ 207.6 TVD = 11035.76'	MD--11541' INC 82.8° AZ 208.5 TVD = 11040.45'	MD--11573' INC 85.3° AZ 208.8 TVD = 11043.77'	MD--11605' INC 86.3° AZ 208.7 TVD = 11046.11'	MD--11636' INC 87.1° AZ 207.6 TVD = 11047.90'	MD--11668' INC 87.8° AZ 207.8 TVD = 11049.32'
--	--	--	--	--	--	--

Ikorn, sbblky-sbply,  
tr dk mica, rr wh

SH: m-dkybrn, occ dkbrn, sbblky-sbply,  
mfrn, vs-sl sily ip, rr-tr dk mica, tr wh  
CALC fil frac, m-v calc

SH: m-dkybrn, occ dkbrn, sbblky-sbply,  
mfrn, vs-sl sily ip, rr-tr dk mica, rr wh  
CALC frag, m-v calc

SH: m-dkybrn, occ dkbrn, sbblky-sbply,  
mfrn, vs-sl sily ip, rr-tr dk mica, vr v plyc  
frag, rr wh CALC frag & vr clr CALC frac fil,  
m-v calc

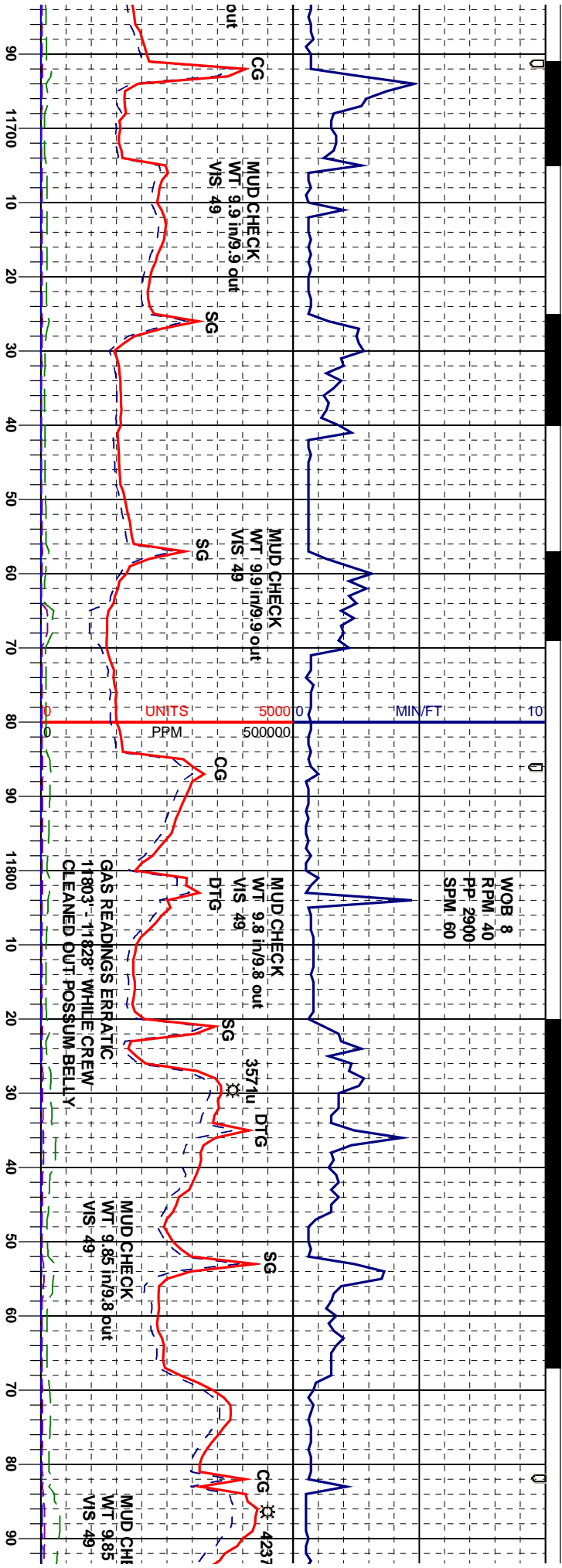
SH: m-dkybrn, occ dkbrn, sbbl  
mfrn, vs-sl sily ip, rr-tr dk mica,  
CALC frag & strk, m-v calc

11200

10700

200

AP



MD	INC	AZ	TVD
MD--11700'	INC 88.8°	AZ 206.7	TVD = 11050.27'
MD--11731'	INC 91.1°	AZ 206.1	TVD = 11050.30'
MD--11763'	INC 93.9°	AZ 205.9	TVD = 11048.90'
MD--11795'	INC 94.6°	AZ 205.7	TVD = 11046.53'
MD--11827'	INC 92.8°	AZ 204.8	TVD = 11044.46'

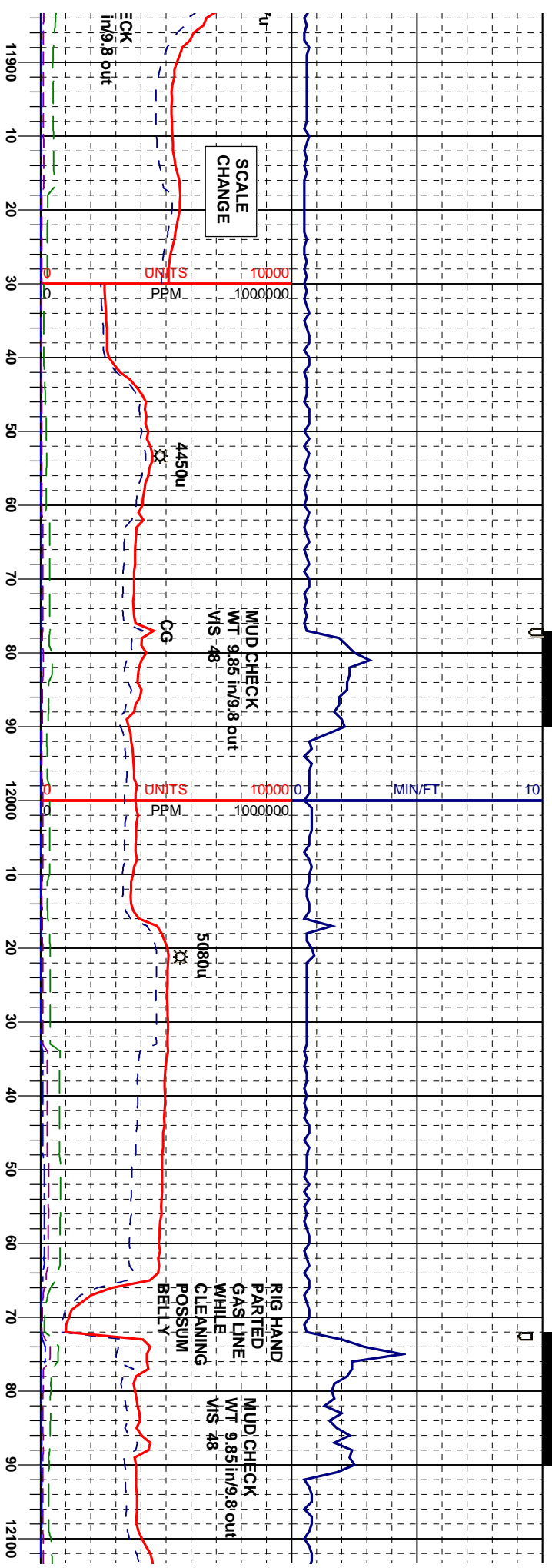
ky-sbply, tr wh

SH: m-dkgybrn, occ dkbrn, sbblky-sbply, mfrm, vs-si sily ip, rr-tr dk mica, rr wh  
CALC frag, m-v calc

SH: m-dkgybrn, occ dkbrn, sbblky-sbply, mfrm, vs-si sily ip, rr-tr dk mica, rr wh  
CALC frag, m-v calc

SH: m-dkgybrn, occ dkbrn, sbblky-sbply, mfrm, vs-si sily ip, rr-tr dk mica, rr wh  
CALC frag, m-v calc

SH: m-dkgybrn, occ dkbrn, sbblky-sbply, mfrm, vs-si sily ip, rr-tr dk mica, rr wh  
CALC frag, m-v calc



**NOW COLLECTING 50' LAGGED CUTTINGS SPLS**

MD-11921'  
INC 88.7°  
AZ 202.4  
TVD = 11043.23'

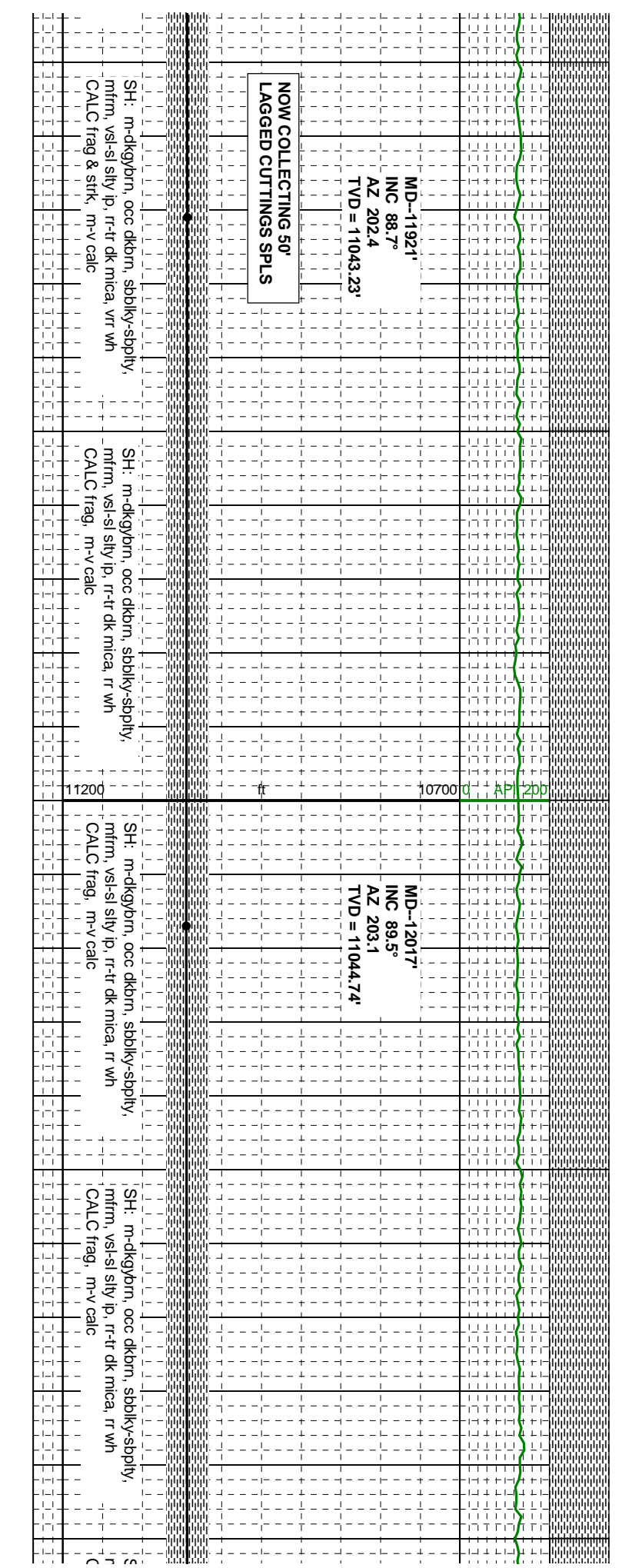
MD-12017'  
INC 89.5°  
AZ 203.1  
TVD = 11044.74'

SH: m-dkgybrn, occ dkbrn, sbblky-sbply,  
mfrm, vs-sl silty ip, rr-tr dk mica, vr wh  
CALC frag & strk, m-v calc

SH: m-dkgybrn, occ dkbrn, sbblky-sbply,  
mfrm, vs-sl silty ip, rr-tr dk mica, rr wh  
CALC frag, m-v calc

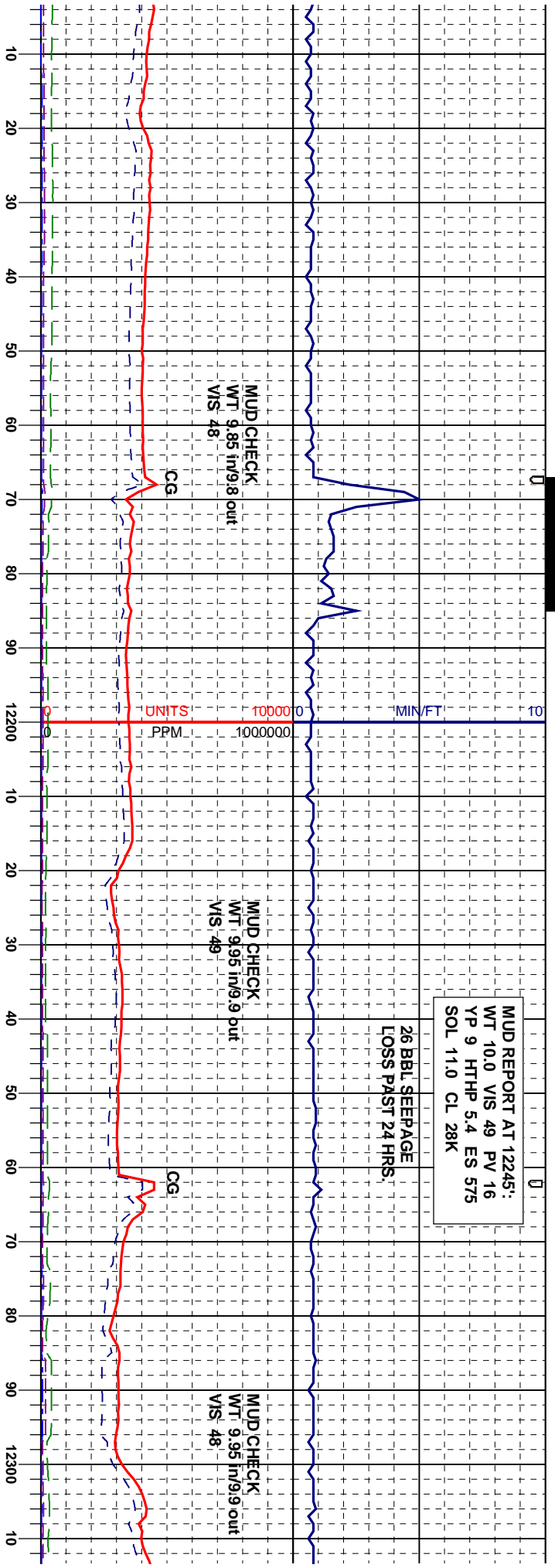
SH: m-dkgybrn, occ dkbrn, sbblky-sbply,  
mfrm, vs-sl silty ip, rr-tr dk mica, rr wh  
CALC frag, m-v calc

SH: m-dkgybrn, occ dkbrn, sbblky-sbply,  
mfrm, vs-sl silty ip, rr-tr dk mica, rr wh  
CALC frag, m-v calc



MUD REPORT AT 12245:  
 WT 10.0 VIS 49 PV 16  
 YP 9 HTHP 5.4 ES 575  
 SOL 11.0 CL 28K

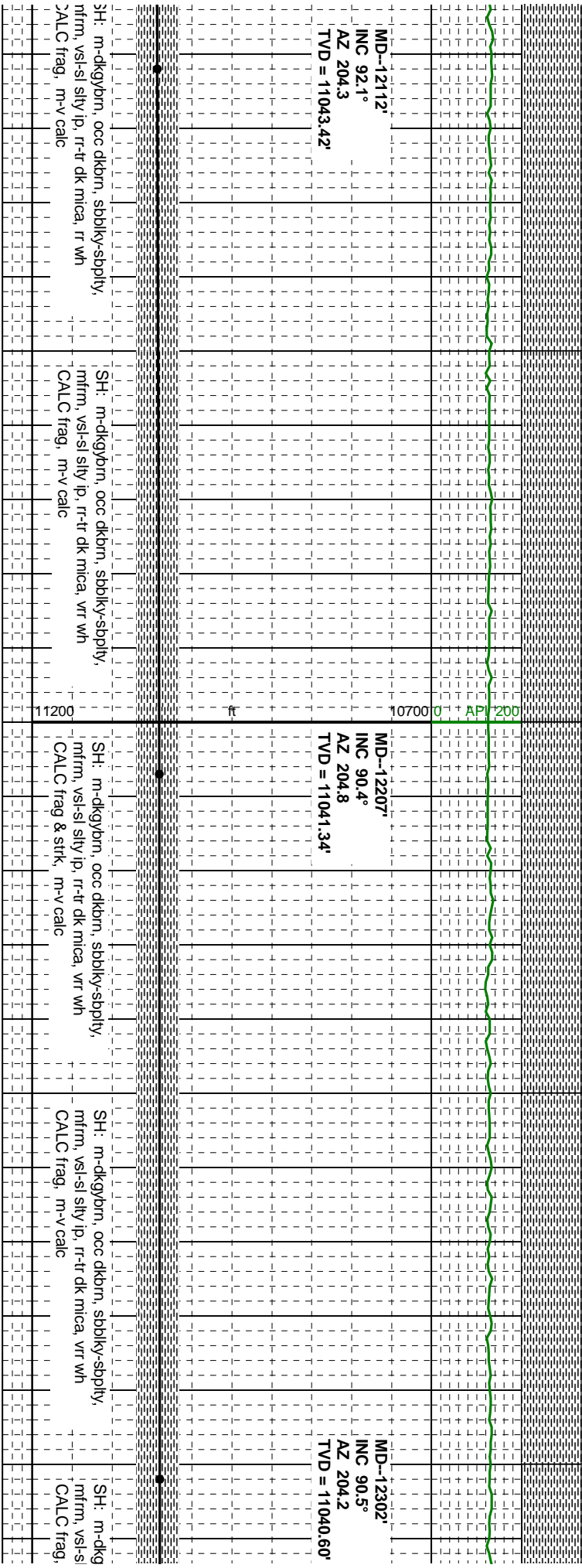
26 BBL SEEPAGE  
 LOSS PAST 24 HRS.



MD--12112  
 INC 92.1°  
 AZ 204.3  
 TVD = 11043.42'

MD--12207  
 INC 90.4°  
 AZ 204.8  
 TVD = 11041.34'

MD--12302  
 INC 90.5°  
 AZ 204.2  
 TVD = 11040.60'



SH: m-dkgybrn, occ dkbrn, sbblky-sbply,  
 mfrm, vs-sl sily ip, rr-tr dk mica, rr wh  
 CALC frag, m-v calc

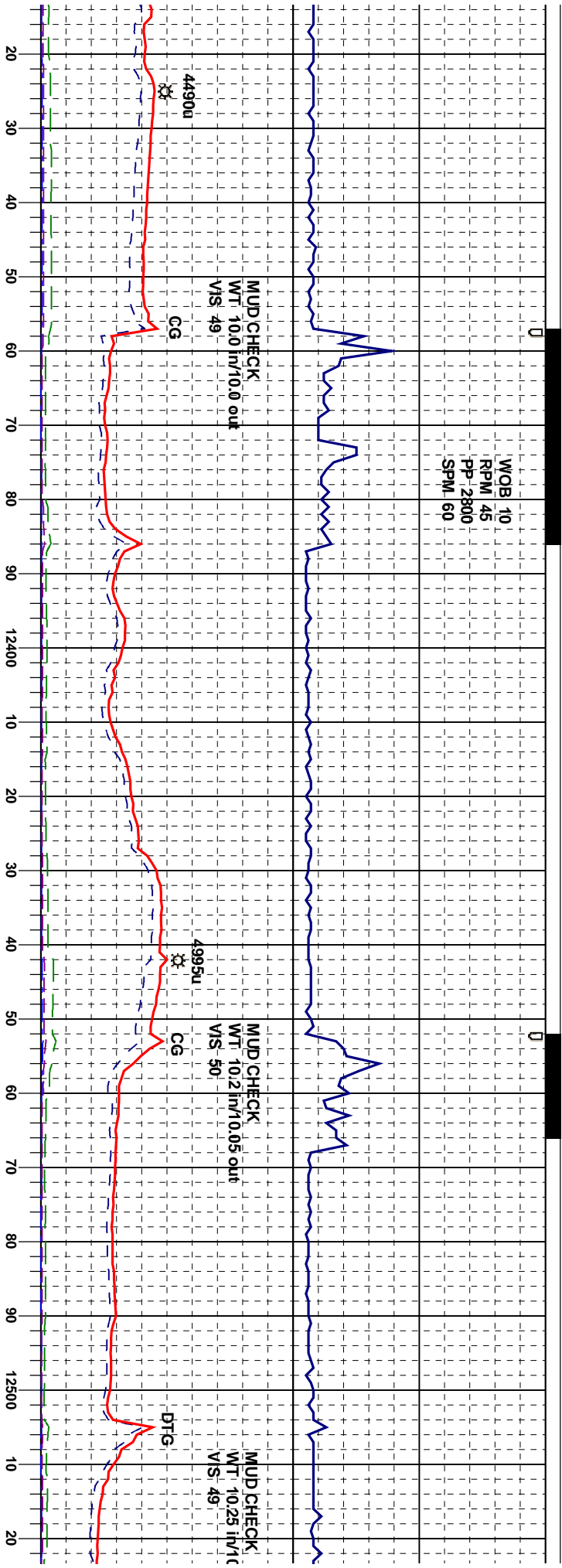
SH: m-dkgybrn, occ dkbrn, sbblky-sbply,  
 mfrm, vs-sl sily ip, rr-tr dk mica, vrr wh  
 CALC frag, m-v calc

SH: m-dkgybrn, occ dkbrn, sbblky-sbply,  
 mfrm, vs-sl sily ip, rr-tr dk mica, vrr wh  
 CALC frag & stlk, m-v calc

SH: m-dkgybrn, occ dkbrn, sbblky-sbply,  
 mfrm, vs-sl sily ip, rr-tr dk mica, vrr wh  
 CALC frag, m-v calc

SH: m-dkgy  
 mfrm, vs-sl  
 CALC frag,

WOB 10  
RPM 45  
PP-2800  
SPM 60



MD--12397'  
INC 90.4°  
AZ 209.0  
TVD = 11039.85'

MD--12492'  
INC 93.0°  
AZ 208.5  
TVD = 11037.03'

ylbm, occ dkbrn, sbblky-sbply,  
sly ip, r-tr dk mica, vrr wh  
m-v calc

SH: m-dkgybrn, occ dkbrn, sbblky-sbply,  
mfrn, vs-sl sly ip, r-tr dk mica, vrr wh  
CALC frag, m-v calc

SH: m-dkgybrn, occ dkbrn, sbblky-sbply,  
mfrn, vs-sl sly ip, r-tr dk mica, m-v calc

SH: m-dkgybrn, occ dkbrn, sbblky-sbply,  
mfrn, vs-sl sly ip, r-tr dk mica, m-v calc

SH: m-dkgybrn, occ dkbrn, sbblky-sbply,  
mfrn, vs-sl sly ip, r-tr dk mica, m-v calc

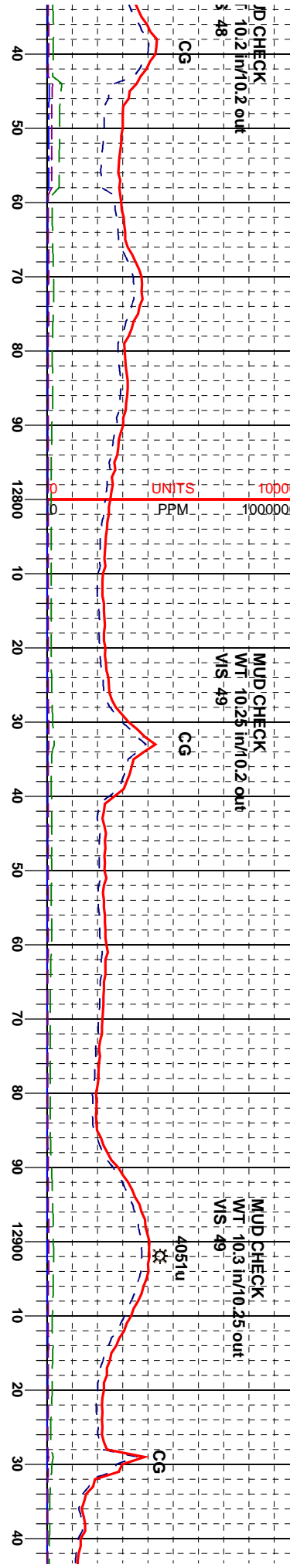
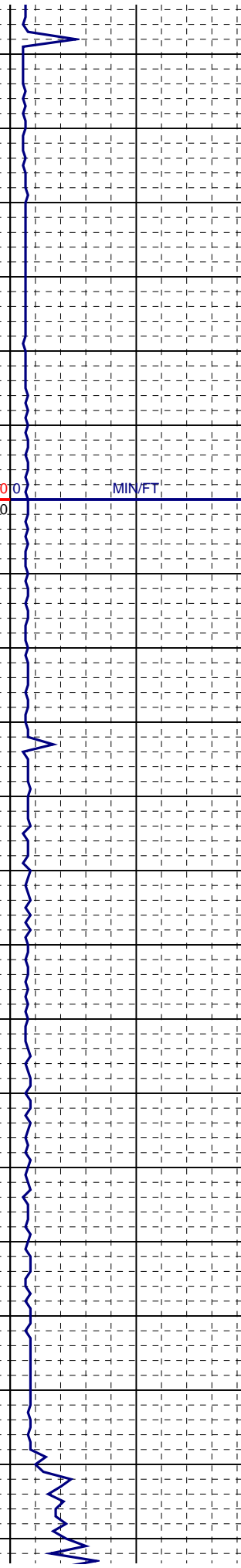


8/15/12

10

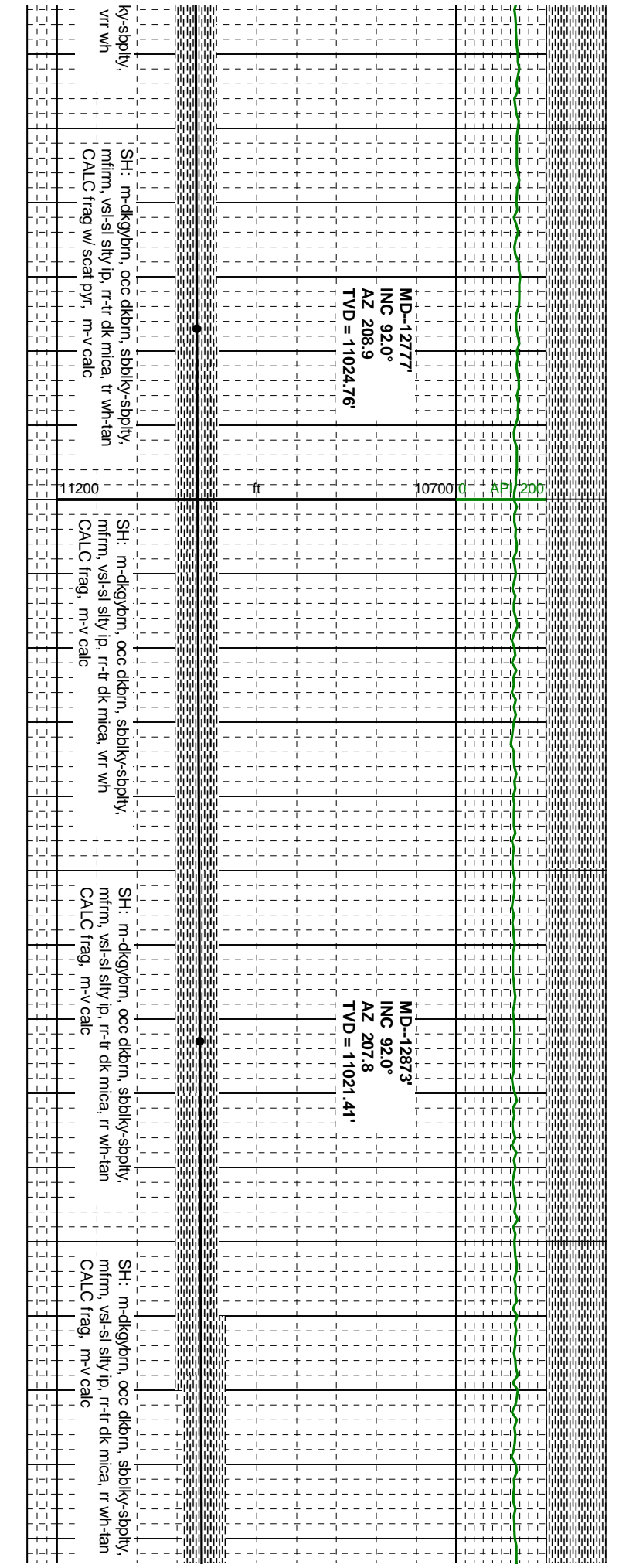
0

0



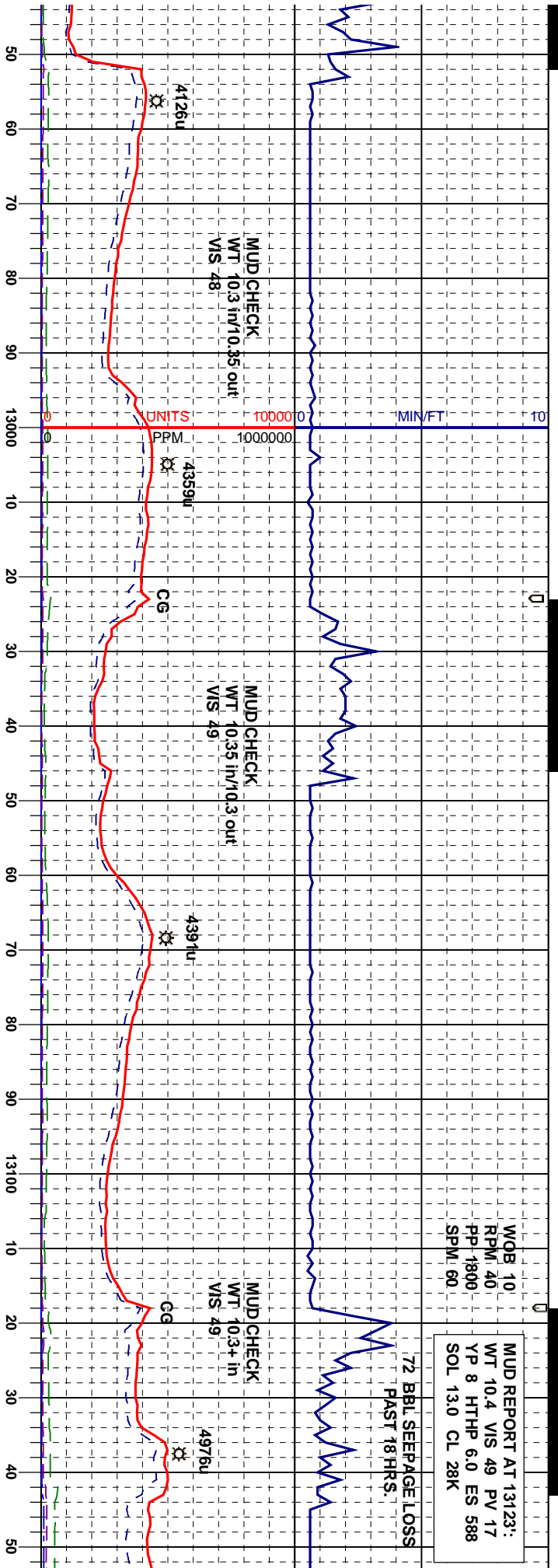
MD-12777  
INC 92.0°  
AZ 208.9  
TVD = 11024.76'

MD-12873  
INC 92.0°  
AZ 207.8  
TVD = 11021.41'



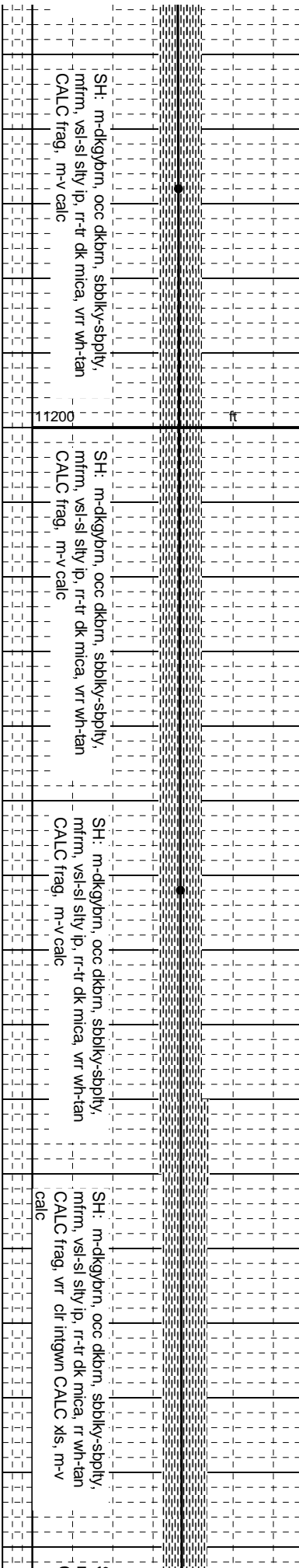
MUD REPORT AT 13123:  
 WT 10.4 VIS 49 PV 17  
 YP 8 HTHP 6.0 ES 588  
 SOL 13.0 CL 28K

72 BBL SEEPAGE LOSS  
 PAST 18 HRS.

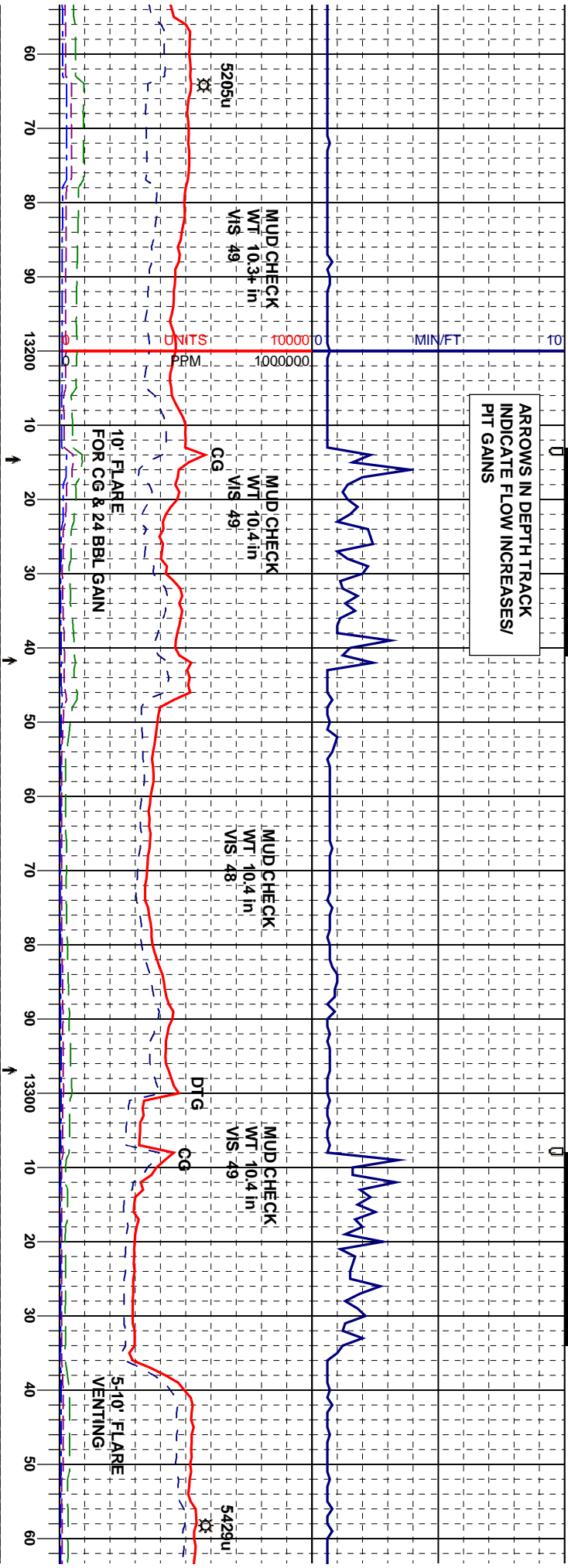


MD-12968'  
 INC 91.9°  
 AZ 210.9  
 TVD = 11018.17'

MD-13062'  
 INC 91.5°  
 AZ 212.5  
 TVD = 11015.38'



ARROWS IN DEPTH TRACK  
INDICATE FLOW INCREASES/  
PIT GAINS



MD-13158'  
INC 90.3°  
AZ 213.5  
TVD = 11013.88'

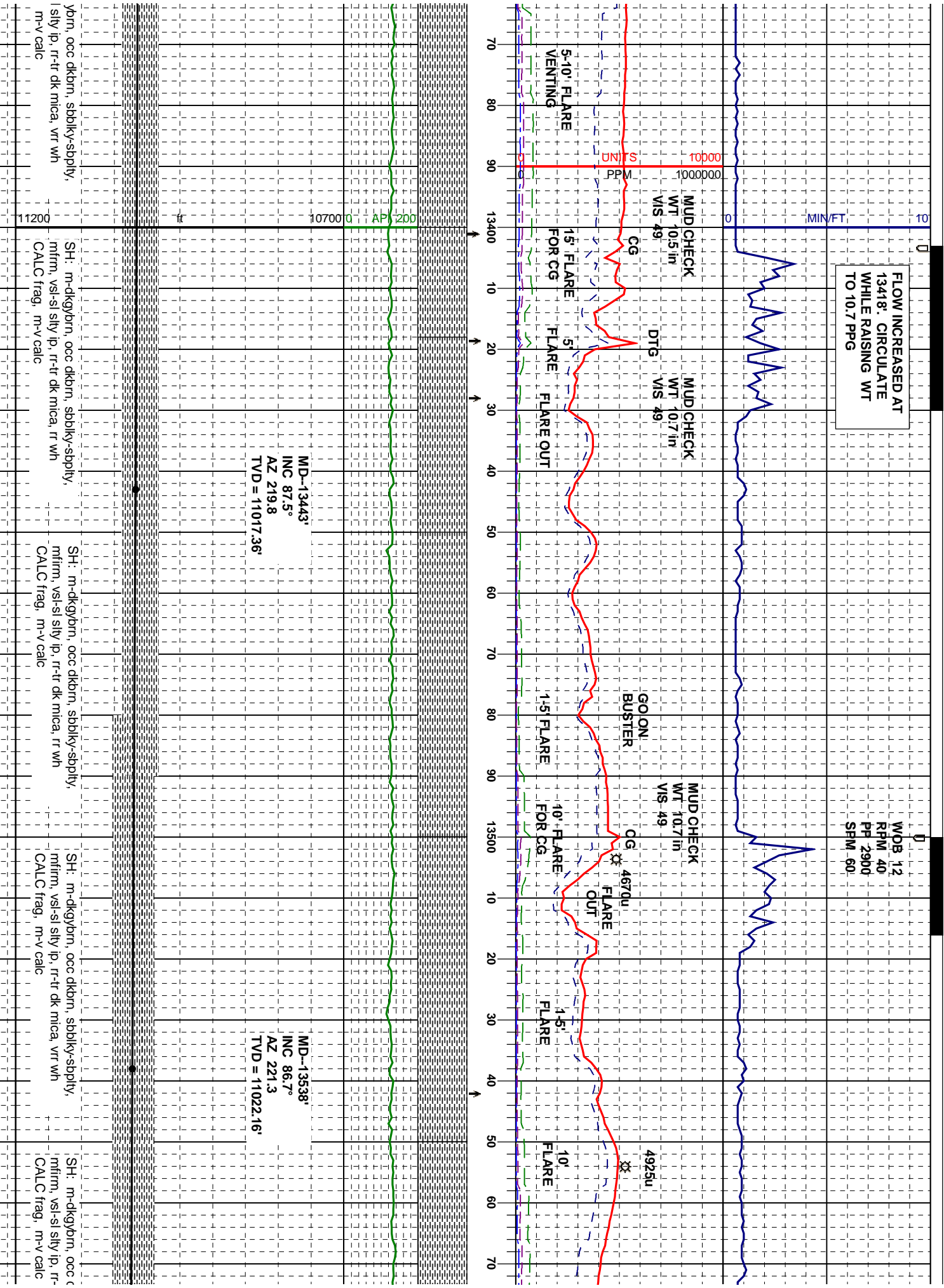
MD-13253'  
INC 90.7°  
AZ 217.3  
TVD = 11013.05'

MD-13348'  
INC 88.3°  
AZ 218.4  
TVD = 11013.88'

SH: m-dkgybrn, occ dkbrn, sbblky-sbply, mfrm, vsi-si sily ip, rr-tr dk mica, rr wh CALC frag, m-v calc	SH: m-dkgybrn, occ dkbrn, sbblky-sbply, mfrm, vsi-si sily ip, rr-tr dk mica, rr wh CALC frag & frac fl, m-v calc	SH: m-dkgybrn, occ dkbrn, sbblky-sbply, mfrm, vsi-si sily ip, rr-tr dk mica, vrr wh CALC frag, m-v calc	SH: m-dkgybrn, occ dkbrn, sbblky-sbply, mfrm, vsi-si sily ip, rr-tr dk mica, vrr wh CALC frag, m-v calc	SH: m-dkgybrn, occ dkbrn, sbblky-sbply, mfrm, vsi-si sily ip, rr-tr dk mica, vrr wh CALC frag, m-v calc
--	--	---	---	---

FLOW INCREASED AT 13418: CIRCULATE WHILE RAISING WT TO 10.7 PPG

WOB 12  
RFM 40  
PP 2900  
SFM 60



MD--13443  
INC 87.5°  
AZ 219.8  
TVD = 11017.36'

MD--13538  
INC 86.7°  
AZ 221.3  
TVD = 11022.16'

yp, occ dk, sbbk, ssply,  
sily ip, rr-tr dk mica, vr wh  
m-v calc

SH: m-dk, occ dk, sbbk, ssply,  
mfrm, vs-si sily ip, rr-tr dk mica, rr wh  
CALC frag, m-v calc

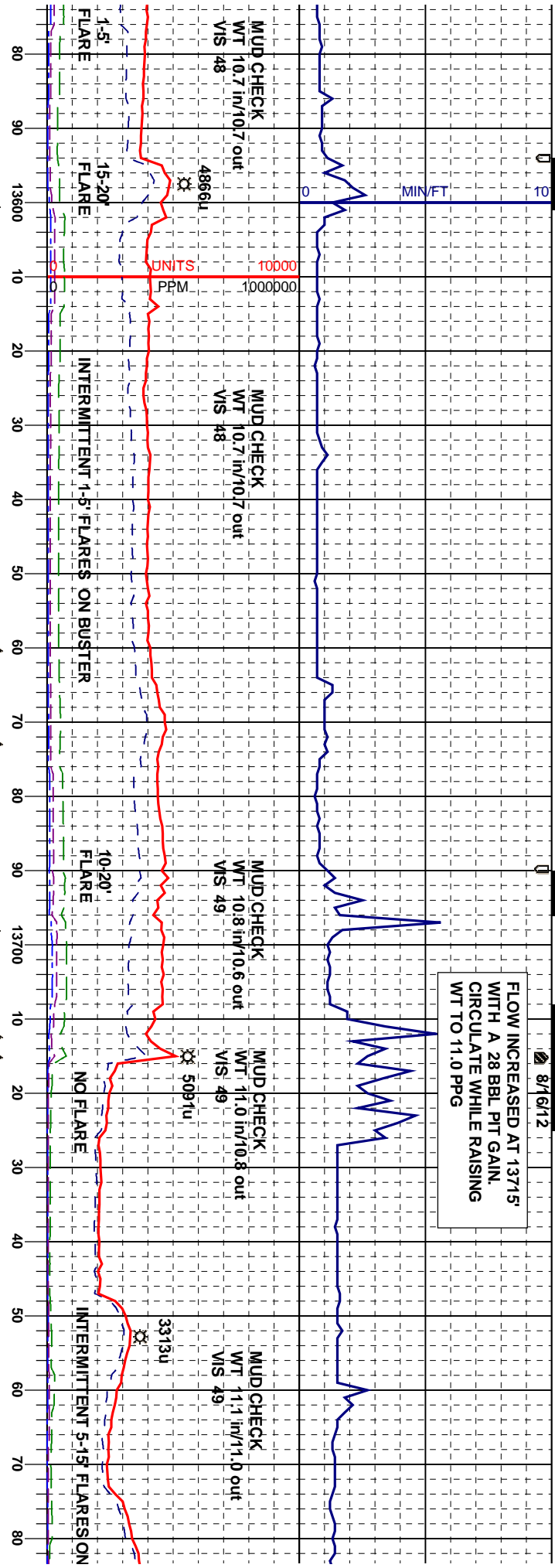
SH: m-dk, occ dk, sbbk, ssply,  
mfrm, vs-si sily ip, rr-tr dk mica, rr wh  
CALC frag, m-v calc

SH: m-dk, occ dk, sbbk, ssply,  
mfrm, vs-si sily ip, rr-tr dk mica, rr wh  
CALC frag, m-v calc

SH: m-dk, occ dk, sbbk, ssply,  
mfrm, vs-si sily ip, rr-tr dk mica, rr wh  
CALC frag, m-v calc

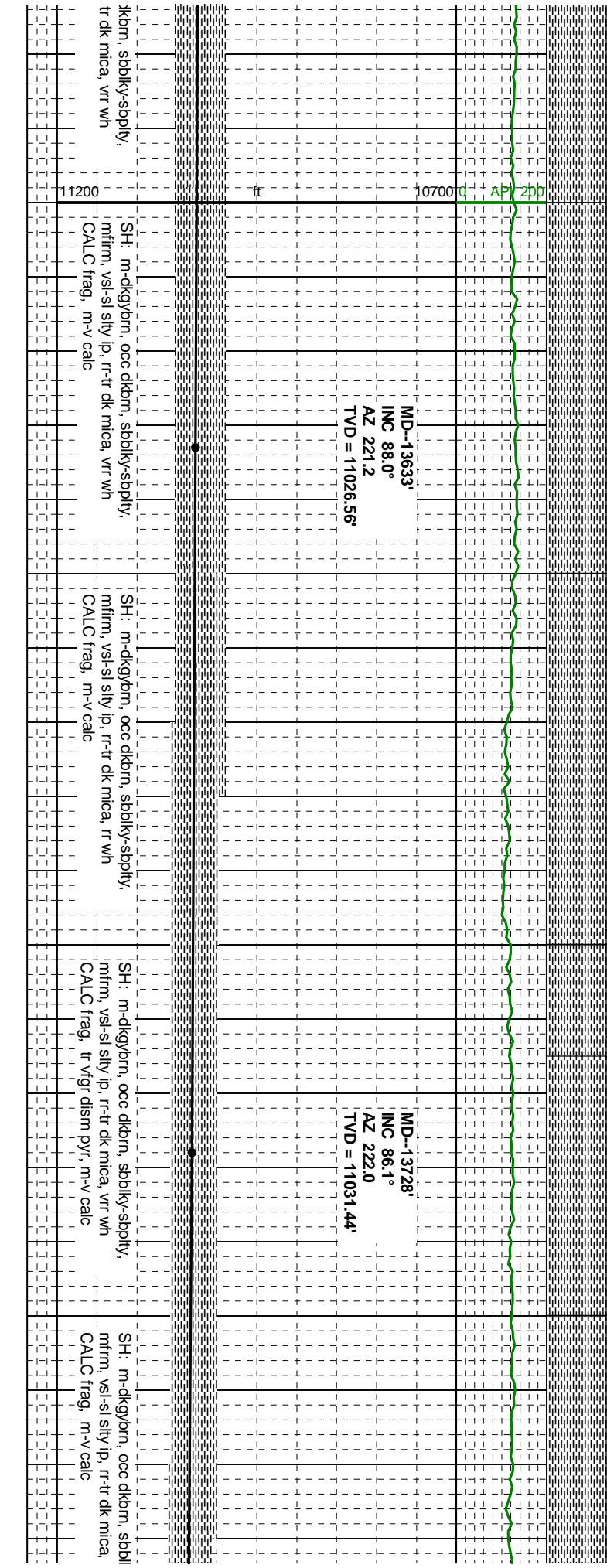
8/16/12

FLOW INCREASED AT 13715'  
WITH A 28 BBL PIT GAIN.  
CIRCULATE WHILE RAISING  
WT TO 11.0 PPG

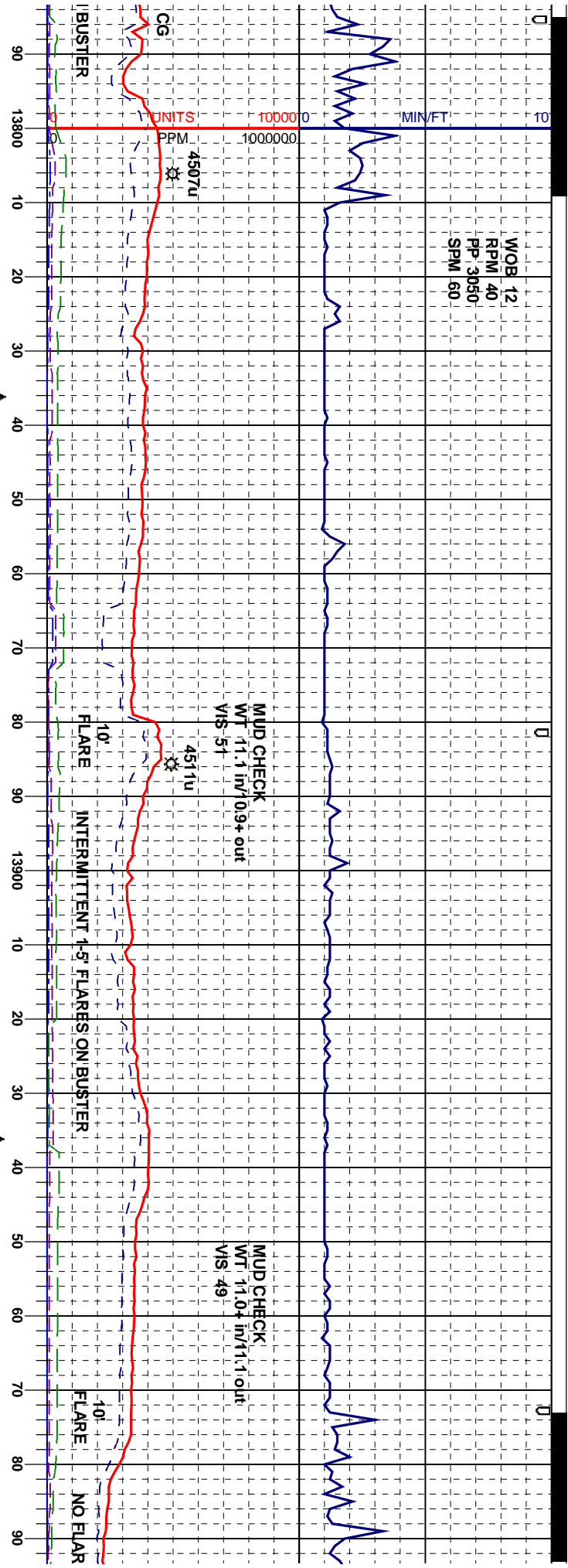


MD--13633'  
INC 88.0°  
AZ 221.2  
TVD = 11026.56'

MD--13728'  
INC 86.1°  
AZ 222.0  
TVD = 11031.44'



MOB 12  
RPM 40  
PP 3050  
SPM 60



MD-13824  
INC 86.5°  
AZ 224.8  
TVD = 11038.14'

MD-13919  
INC 85.9°  
AZ 223.5  
TVD = 11044.94'

SH: m-dkgybrn, occ dkbrn, sbblky-sbply,  
mfrm, vs-si silty ip, rr-tr dk mica, vrr wh  
CALC frag, m-v calc

SH: m-dkgybrn, occ dkbrn, sbblky-sbply,  
mfrm, vs-si silty ip, rr-tr dk mica, vrr wh  
CALC frag, m-v calc

SH: m-dkgybrn, occ dkbrn, sbblky-sbply,  
mfrm, vs-si silty ip, rr-tr dk mica, vrr wh  
CALC frag, m-v calc

SH: m-dkgybrn, occ dkbrn, sbblky-sbply,  
mfrm, vs-si silty ip, rr-tr dk mica, vrr wh  
CALC frag, m-v calc

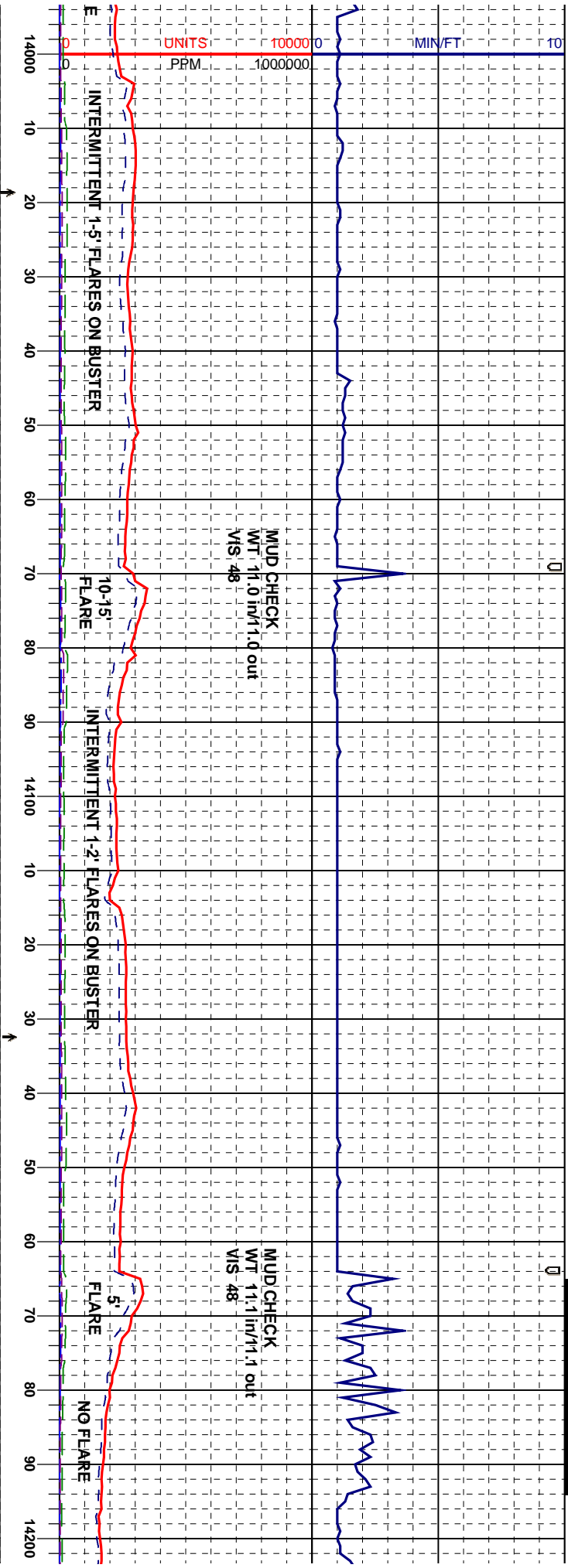
ky-sbply,  
vrr wh

11200

ft

10700

AP 200



MD-14015'  
INC 86.2°  
AZ 225.7  
TVD = 11050.55'

MD-14110'  
INC 85.6°  
AZ 224.7  
TVD = 11057.34'

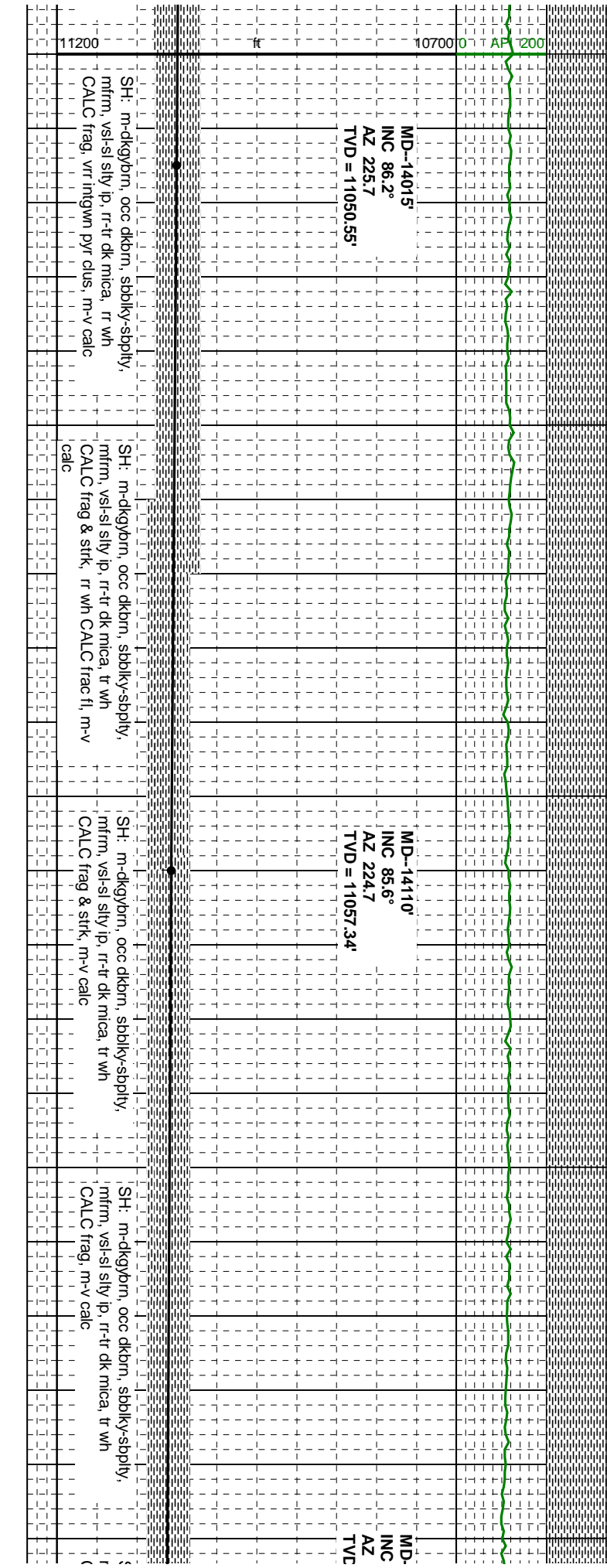
MD-  
INC  
AZ  
TVD

SH: m-dkgybrn, occ dkbrn, sbblky-sbply,  
mfrn, vs-si sily ip, rr-tr dk mica, rr wh  
CALC frag, vr intgwn pyr clus, m-v calc

SH: m-dkgybrn, occ dkbrn, sbblky-sbply,  
mfrn, vs-si sily ip, rr-tr dk mica, tr wh  
CALC frag & strk, rr wh CALC frac fl, m-v  
calc

SH: m-dkgybrn, occ dkbrn, sbblky-sbply,  
mfrn, vs-si sily ip, rr-tr dk mica, tr wh  
CALC frag & strk, m-v calc

SH: m-dkgybrn, occ dkbrn, sbblky-sbply,  
mfrn, vs-si sily ip, rr-tr dk mica, tr wh  
CALC frag, m-v calc



MUD REPORT AT 14267':  
 WT 11.4 VIS 52 PV 21  
 YP 5 HTHP 14.0 ES 563  
 SOL 17.0 CL 27.5K

LOST RETURNS AT 14263: MD. 150 BBL INITIAL LOSS.  
 PUMPING SWEEPS GOT PARTIAL RETURNS BACK.  
 CIRCULATED BOTTOMS UP VENTING THROUGH THE  
 BUSTER THEN DRILLED AHEAD.

OB #8 CUT 8/18  
 4145" IN  
 104 HRS.  
 RUN PIPE-CONVEYED  
 SONIC LOG WITH  
 SCHLUMBERGER

SEEPAGE CONTINUES  
 AT 6-10 BBL/S/HR

MOB. 10  
 RPPM 40  
 PP. 2400  
 SPM. 50

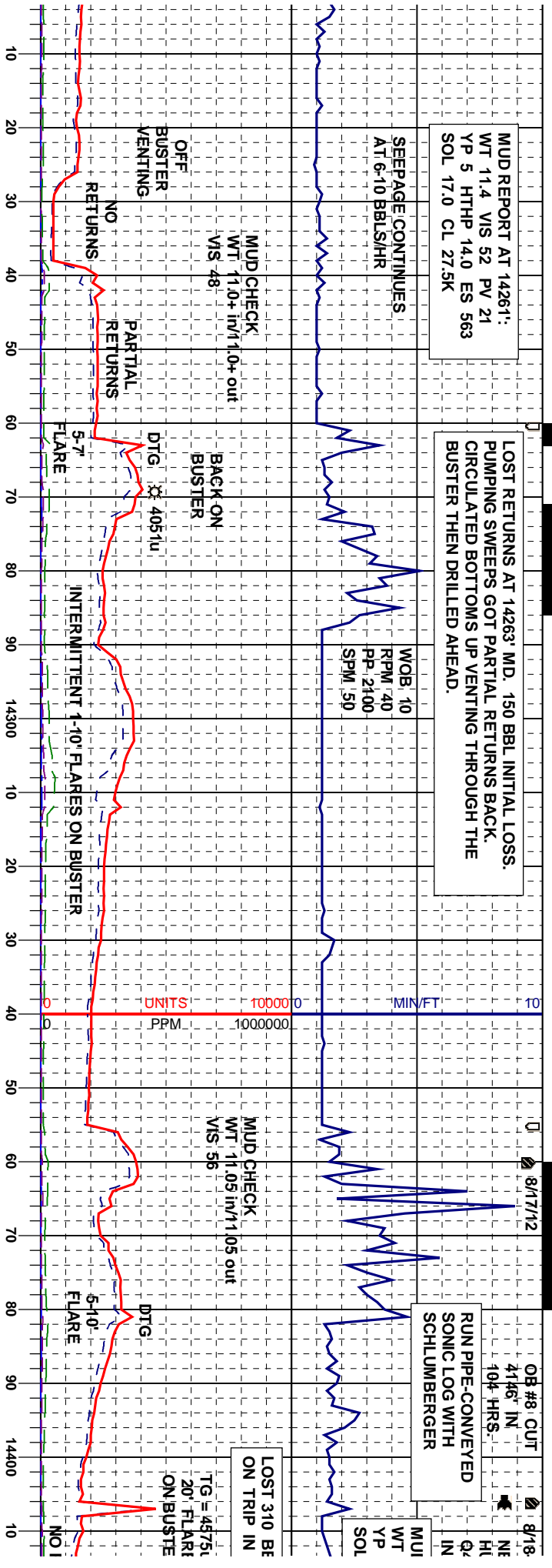
MUD CHECK  
 WT 11.0+ INV/11.0+ out  
 VIS 48

BACK ON  
 BUSTER

MUD CHECK  
 WT 11.05 INV/11.05 out  
 VIS 56

LOST 310 BE  
 ON TRIP IN

TG = 45751  
 20' FLARE  
 ON BUSTE



+14205'  
 88.6°  
 226.1  
 ) = 11062.15'

MD--14300'  
 INC 89.8°  
 AZ 226.1  
 TVD = 11063.48'

MD--14388'  
 INC 91.4°  
 AZ 227.5  
 TVD = 11062.55'

EXTREMELY POOR SPL QUALITY UNTIL FURTHER  
 NOTED DUE TO ABUNDANT LCM IN SYSTEM

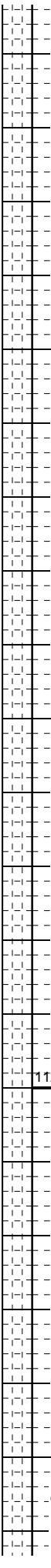
SH: m-dkgybrn, occ dkbrn, sbblky-sply,  
 mfirm, vs-sl sily ip, r-tr dk mica, tr wh  
 CALC frag, m-v calc

SH: m-dkgybrn, occ dkbrn, sbblky-sply,  
 mfirm, vs-sl sily ip, r-tr dk mica, tr wh  
 CALC frag, m-v calc

SH: m-dkgybrn, occ dkbrn, sbblky-sply,  
 mfirm, vs-sl sily ip, r-tr dk mica, tr wh  
 CALC frag, m-v calc

SH: m-dkgybrn, occ dkbrn, sbblky-sply,  
 mfirm, vs-sl sily ip, r-tr dk mica, tr wh  
 CALC frag, m-v calc

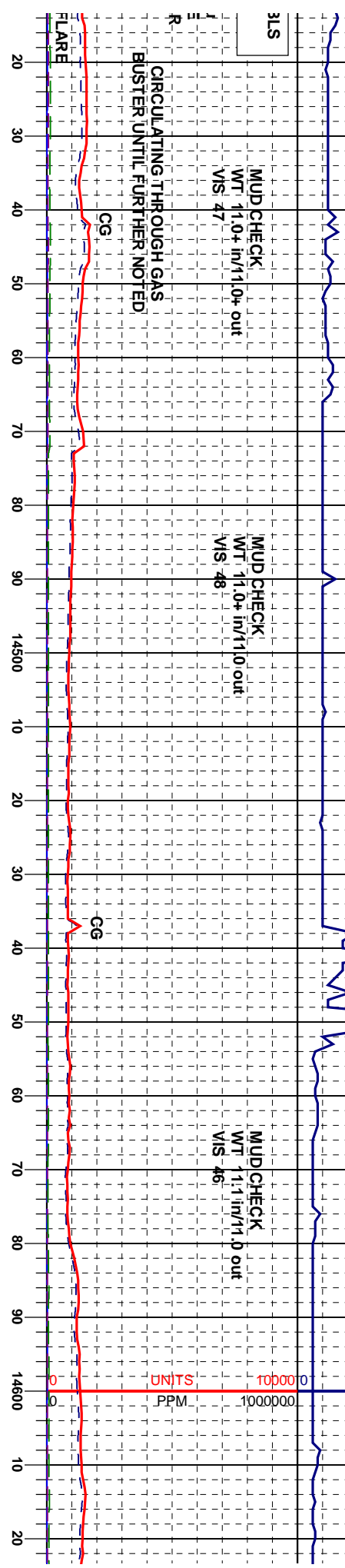
SH: m-dkgy  
 mfirm vs-sl  
 ifrag, m-v ce



20/12 0  
 3#9 6/75"  
 JGHS  
 #055 (P/BG)  
 AT 14406  
 WOB 12  
 RPM 40  
 HP 2250  
 SPM 50

DREPORT AT 14406:  
 11.2 VIS 53 PV 16  
 10 HTHP 14.0 ES 414  
 17.0 CL 27K

MUD REPORT AT 14535:  
 WT 11.0 VIS 50 PV 13  
 YP 9 HTHP 15.0 ES 438  
 SOL 17.0 CL 26K

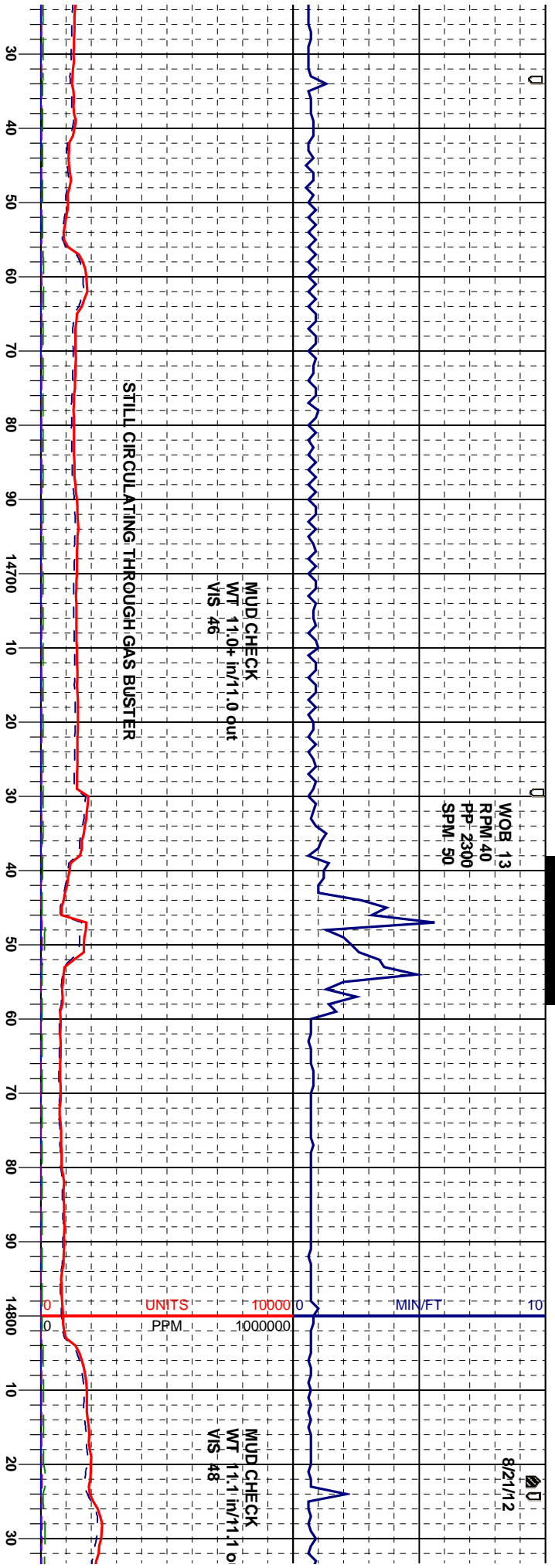


MD-14483  
 INC 90.6°  
 AZ 227.9  
 TVD = 11060.90'

MD-14579  
 INC 91.4°  
 AZ 228.6  
 TVD = 11059.22'

SPL QUALITY STILL VERY POOR

ypbm, occ dkbrn, sbblky-sbply, slty ip, rr-tr dk mica, tr wh CALC	SH: m-dkgybrn, occ dkbrn, sbblky-sbply, mfrm, vs-sl slty ip, rr-tr dk mica, tr wh CALC frag, m-v calc	SH: m-dkgybrn, occ dkbrn, sbblky-sbply, mfrm, vs-sl slty ip, rr-tr dk mica, tr wh CALC frag, m-v calc	SH: m-dkgybrn, occ dkbrn, sbblky-sbply, mfrm, vs-sl slty ip, rr-tr dk mica, tr wh CALC frag, m-v calc	SH: m-dkgybrn, occ dkbrn, sbblky-sbply, mfrm, vs-sl slty ip, rr-tr dk mica, tr wh CALC frag, m-v calc
11200	10700	10200	9700	9200



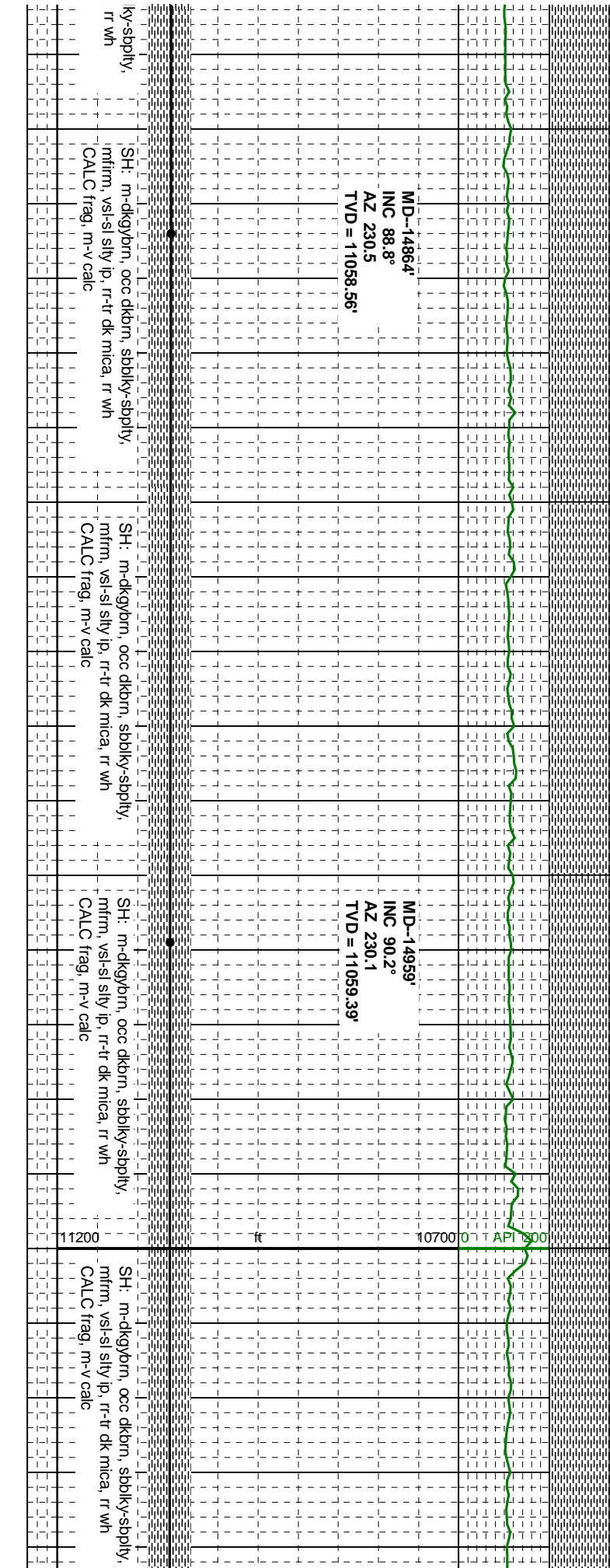
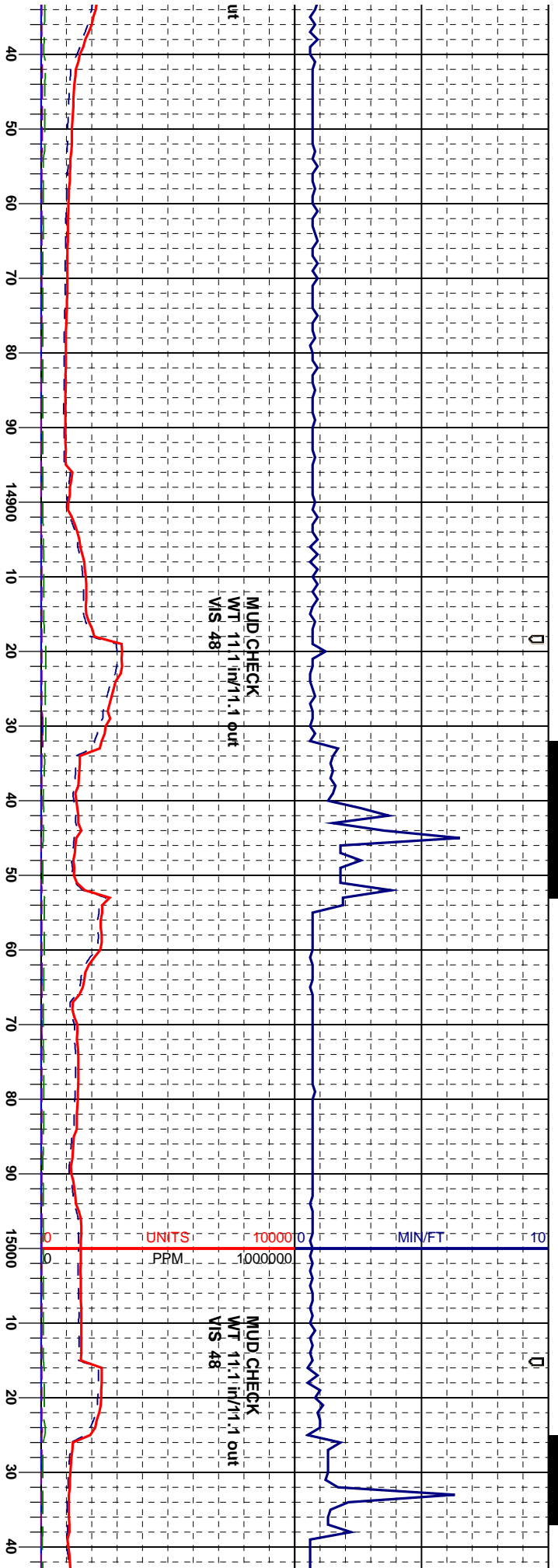
MD--14674  
 INC 89.3°  
 AZ 229.6  
 TVD = 11058.64'

MD--14769  
 INC 91.0°  
 AZ 229.5  
 TVD = 11058.39'

COARSE LCM GONE FROM CUTTINGS BUT STILL ABNT  
 FINE MATERIAL--QUALITY REMAINS VERY POOR

kkmn, sbblky-sbply,  
 tr dk mica, rr wh  
 SH: m-dkgybrn, occ dkbn, sbblky-sbply,  
 mfirm, vs-sl silv ip, r-tr dk mica, rr wh  
 CALC frag, m-v calc  
 SH: m-dkgybrn, occ dkbn, sbblky-sbply,  
 mfirm, vs-sl silv ip, r-tr dk mica, rr wh  
 CALC frag, m-v calc  
 SH: m-dkgybrn, occ dkbn, sbblky-sbply,  
 mfirm, vs-sl silv ip, r-tr dk mica, rr wh  
 CALC frag, m-v calc  
 SH: m-dkgybrn, occ dkbn, sbblky-sbply,  
 mfirm, vs-sl silv ip, r-tr dk mica, rr wh  
 CALC frag, m-v calc







MOB 13  
RPM 40  
PP 2450  
SPM 50

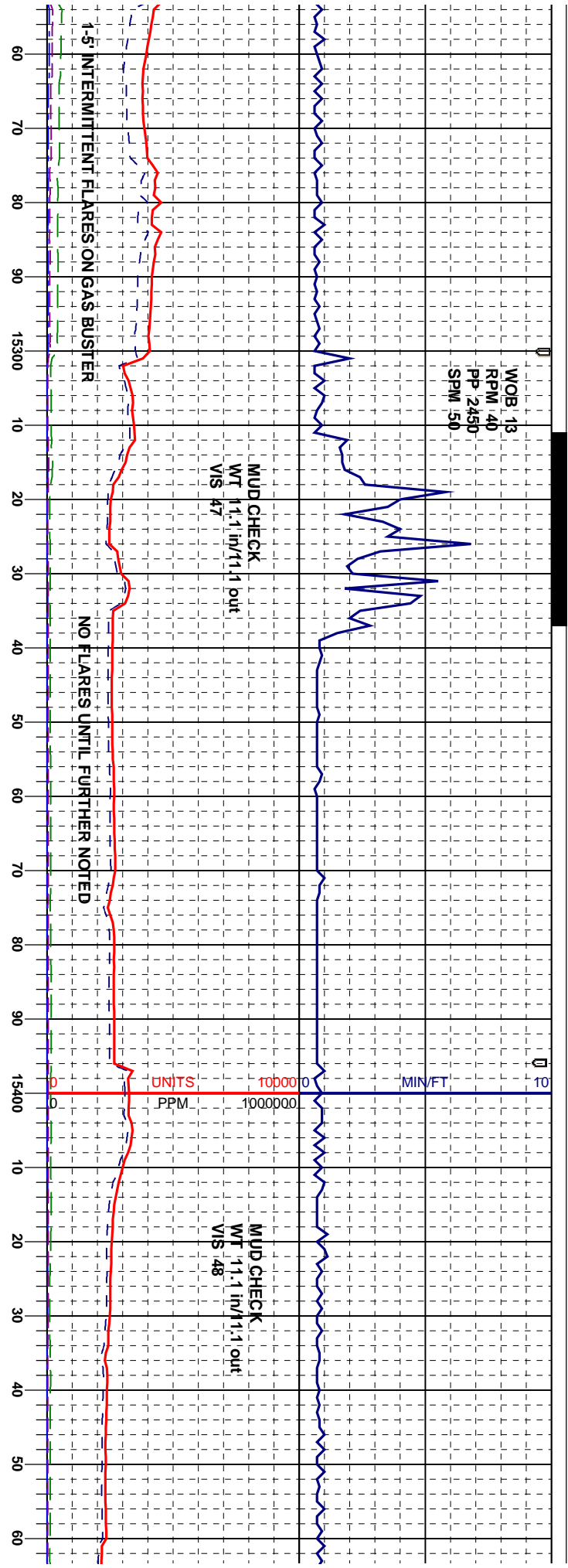
MUD CHECK  
WT 11.1 in/11.1 out  
VIS 47

MUD CHECK  
WT 11.1 in/11.1 out  
VIS 48

1-5' INTERMITTENT FLARES ON GAS BUSTER

NO FLARES UNTIL FURTHER NOTED

UNITS 1000000 PPM  
MIN/FT



38'  
MD--15341'  
INC 91.2°  
AZ 230.8  
TVD = 11062.38'

SPL QUALITY STILL VERY POOR

MD--15436'  
INC 88.8°  
AZ 232.5  
TVD = 11062.38'

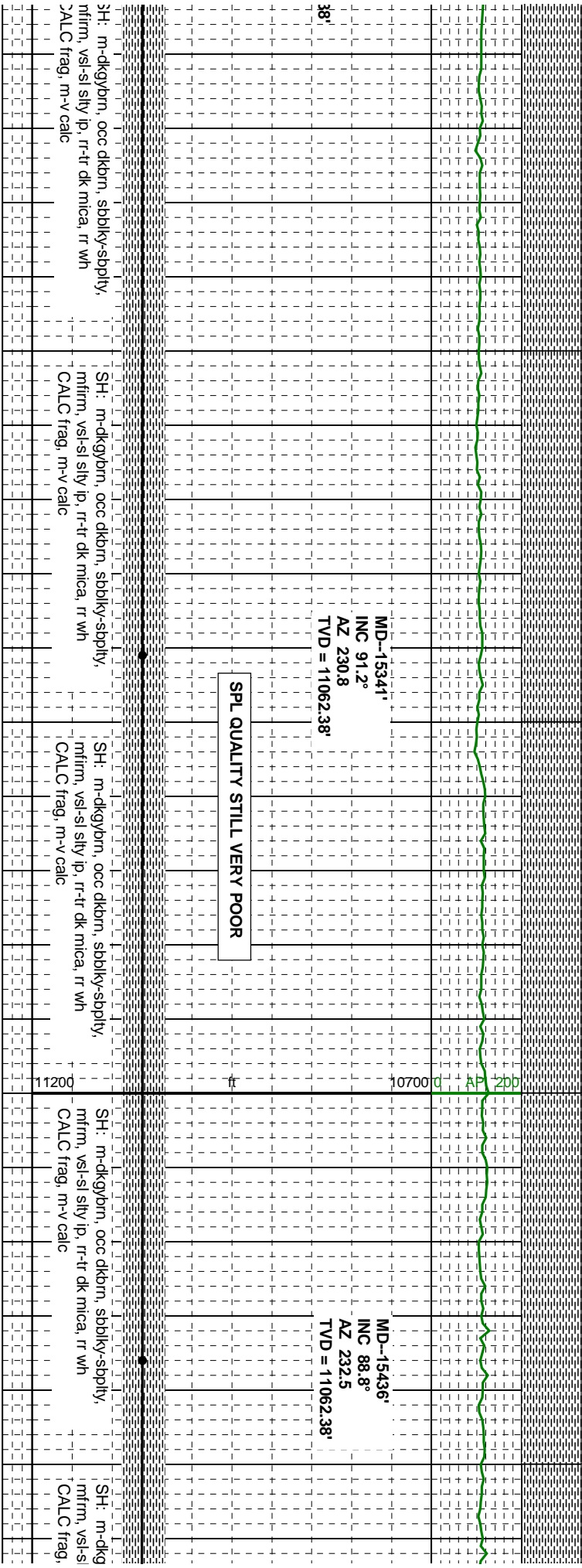
SH: m-dkgybrn, occ dkbrn, sbblky-sbply,  
mfrm, vsi-sl sily ip, r-tr dk mica, r wh  
CALC frag, m-v calc

SH: m-dkgybrn, occ dkbrn, sbblky-sbply,  
mfrm, vsi-sl sily ip, r-tr dk mica, r wh  
CALC frag, m-v calc

SH: m-dkgybrn, occ dkbrn, sbblky-sbply,  
mfrm, vsi-sl sily ip, r-tr dk mica, r wh  
CALC frag, m-v calc

SH: m-dkgybrn, occ dkbrn, sbblky-sbply,  
mfrm, vsi-sl sily ip, r-tr dk mica, r wh  
CALC frag, m-v calc

SH: m-dkgybrn, occ dkbrn, sbblky-sbply,  
mfrm, vsi-sl sily ip, r-tr dk mica, r wh  
CALC frag, m-v calc



8/22/12

U

U

10

MOB 10  
RPM 40  
PP 2450  
SPM 50

MUD REPORT AT 15615':  
WT 11.3 VIS 48 PV 15  
YP 7 HTHP 14.6 ES 488  
SOL 18.0 CL 27K

TOOK AT 156  
INCRE FLARE  
IN AFT  
TO CO  
MW TC  
CIRCU

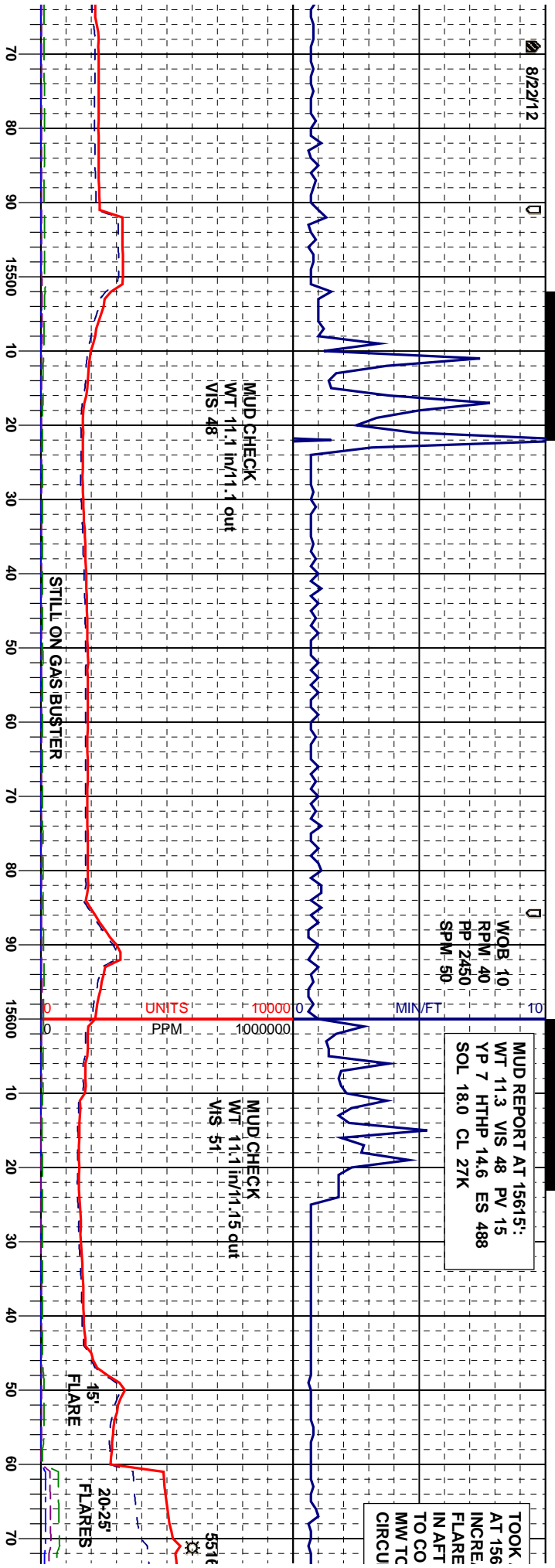
MUD CHECK  
WT 11.1 in/11.1 out  
VIS 48

MUD CHECK  
WT 11.1 in/11.15 out  
VIS 51

STILL ON GAS BUSTER

15' FLARE  
20-25' FLARES

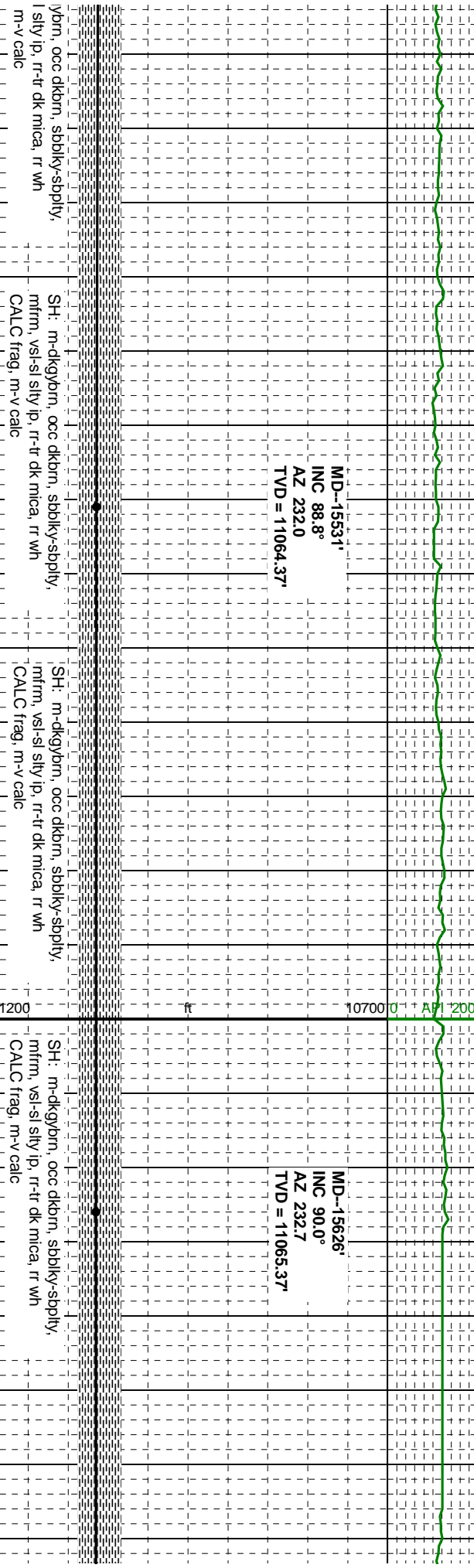
5516



MD--15531  
INC 88.8°  
AZ 232.0  
TVD = 11064.37'

MD--15626  
INC 90.0°  
AZ 232.7  
TVD = 11065.37'

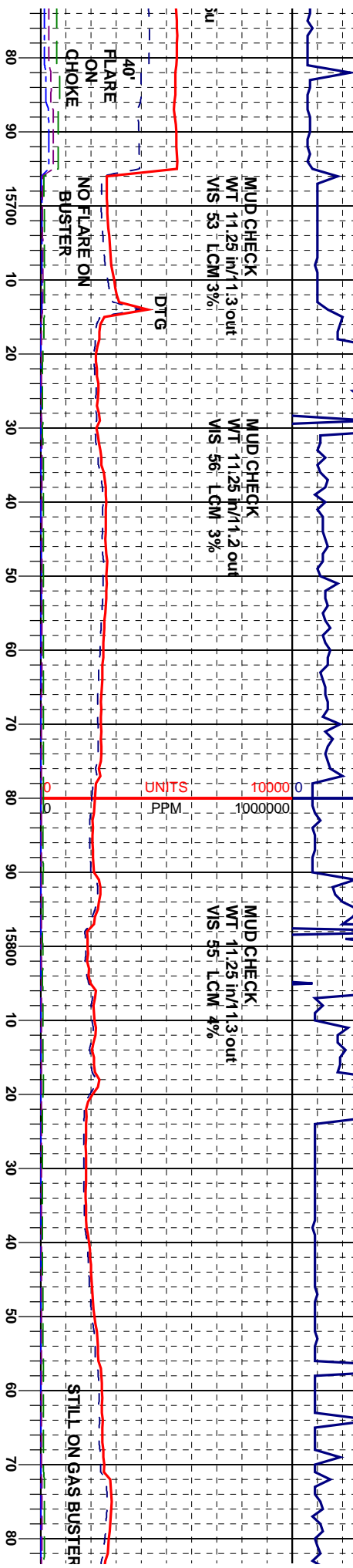
NO SPL TAKEN--  
PROTO



A 40 BBL PIT GAIN  
 95' WITH FLOW  
 ASE AND 15-20'  
 S. SHUT WELL  
 ER ATTEMPTING  
 GAS. RAISING  
 ) 11.3 PPG.  
 LATE ON CHOKE.

DRILLED AHEAD  
 TO 15713' & LOST  
 COMPLETE RETURNS.  
 PUMP LCM SWEEPS  
 & WORK PIPE WITH  
 LOW RETURNS.

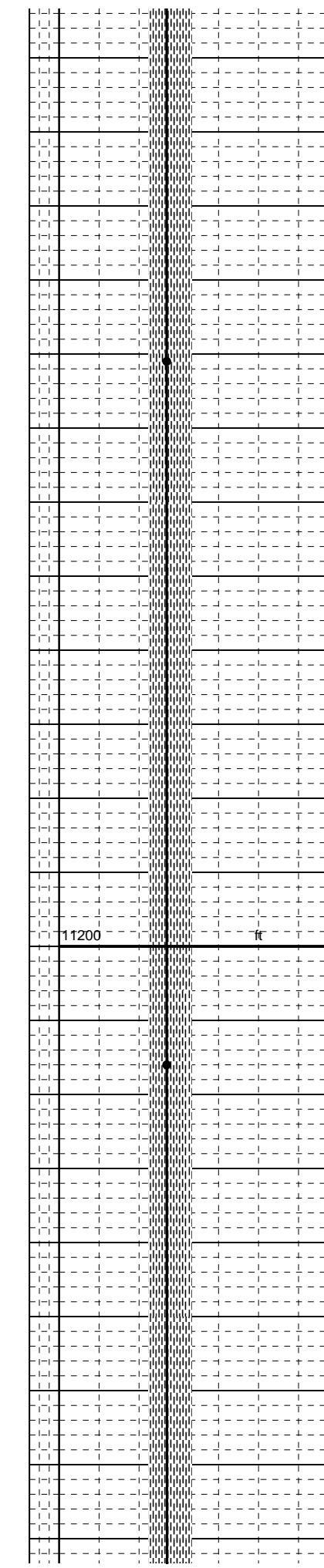
WOB: 10  
 RPM: 40  
 PP: 2950  
 SPM: 50

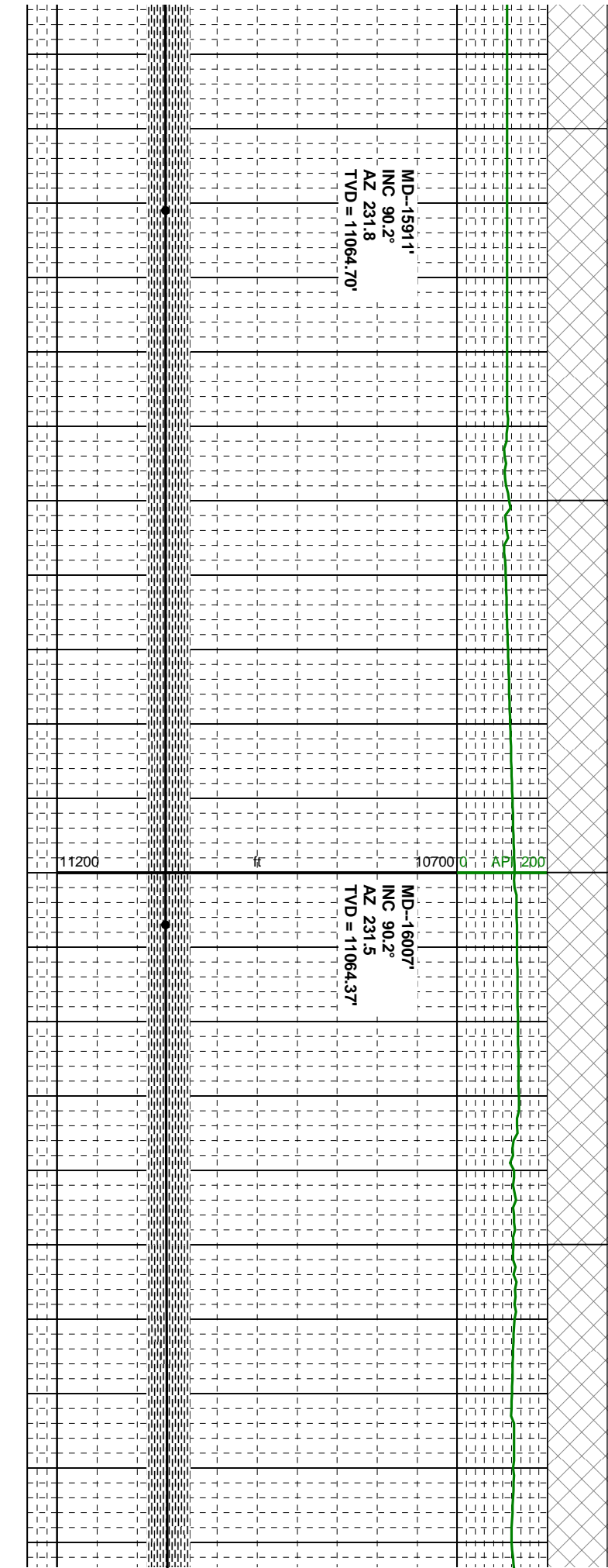
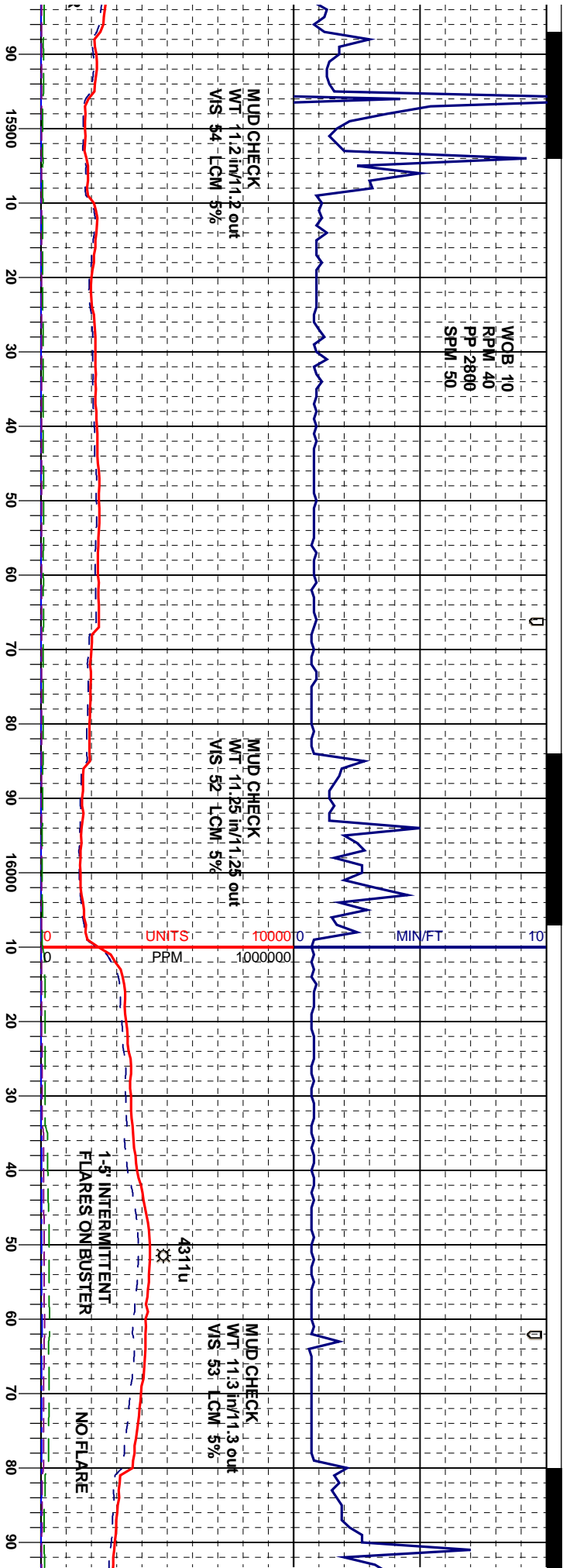


WELL CONTROL COL NO RETURNS NO SPLS WHILE SHAKER SCREENS PULLED IN ORDER TO MAINTAIN LCM IN SYSTEM

MD--15721'  
 INC 90.1°  
 AZ 232.9  
 TVD = 11065.28'

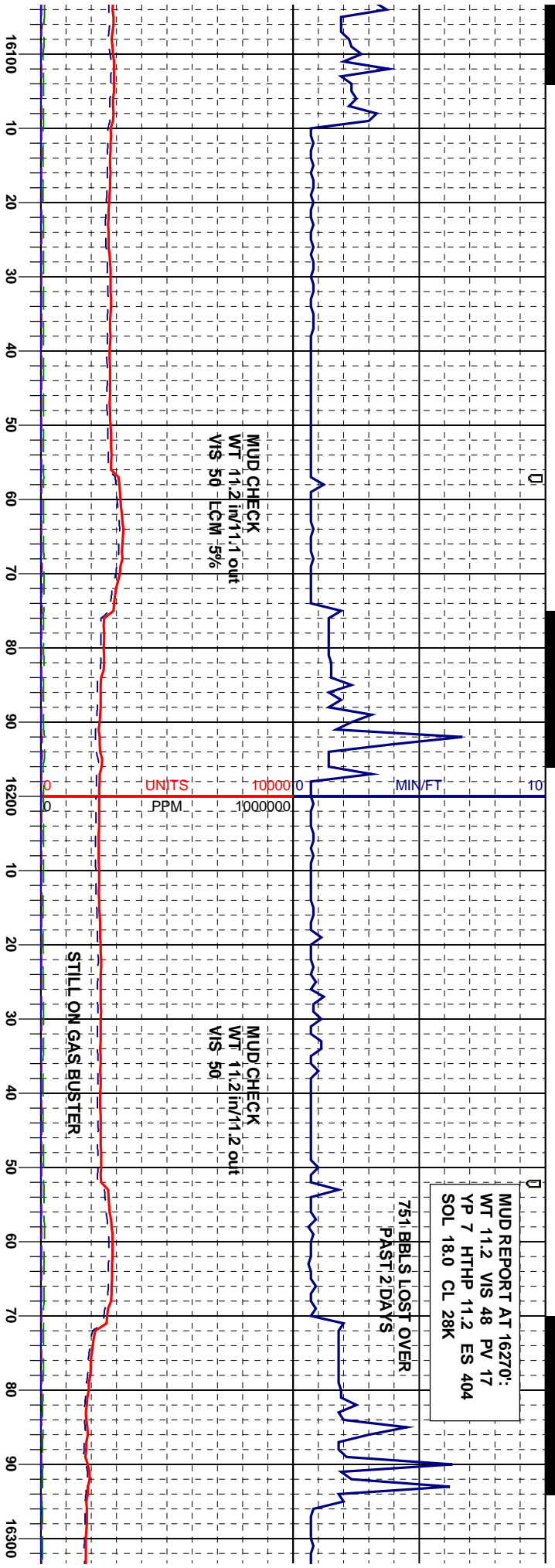
MD--15816'  
 INC 90.2°  
 AZ 232.7  
 TVD = 11065.03'





MUD REPORT AT 16270:  
 WT 11.2 VIS 48 PV 17  
 YP 7 HTHP 11.2 ES 404  
 SOL 18.0 CL 28K

751 BBL'S LOST OVER  
 PAST 21 DAYS



GAMMA TOOL MALFUNCTION--  
 NO FURTHER DATA

MD--16102'  
 INC 92.4°  
 AZ 231.6  
 TVD = 11062.21'

MD--16197'  
 INC 91.9°  
 AZ 231.4  
 TVD = 11058.65'

MD--16292'  
 INC 92.2°  
 AZ 232.2  
 TVD = 11055.25'

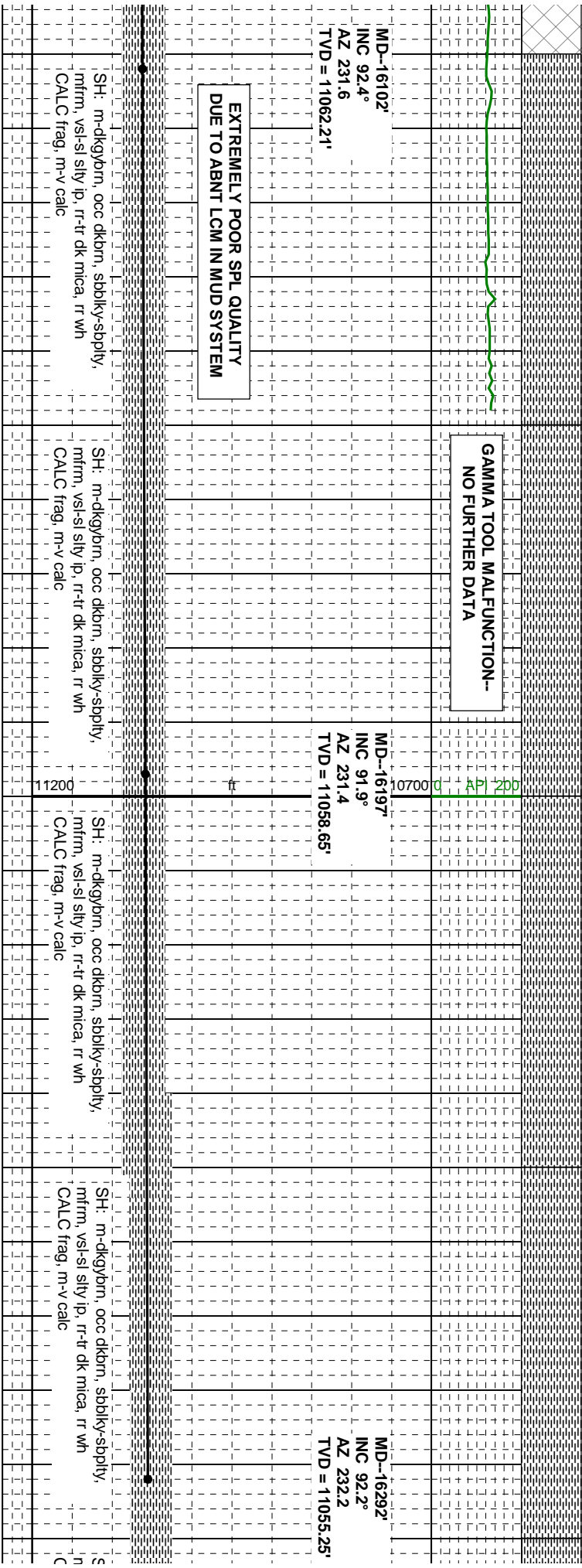
EXTREMELY POOR SPL QUALITY  
 DUE TO ABNT LCM IN MUD SYSTEM

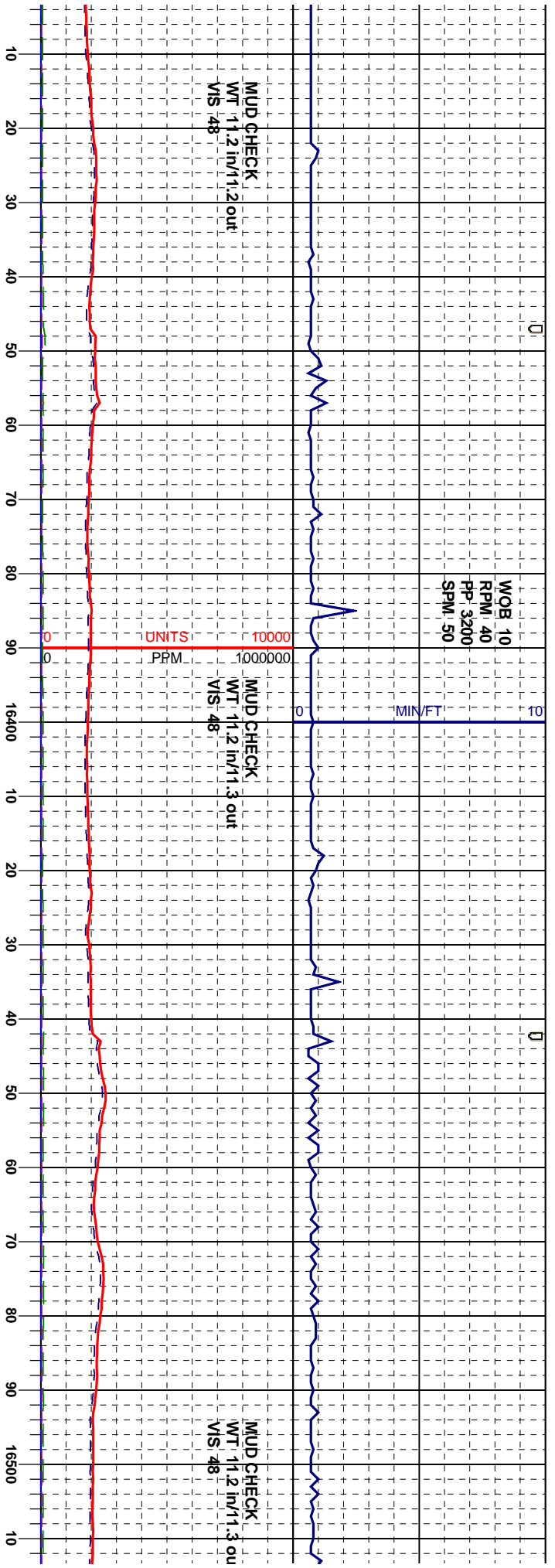
SH: m-dkgybrn, occ dkbrn, sbblky-sbply,  
 mfrm, vs-sl sily lp, rr-tr dk mica, rr wh  
 CALC frag, m-v calc

SH: m-dkgybrn, occ dkbrn, sbblky-sbply,  
 mfrm, vs-sl sily lp, rr-tr dk mica, rr wh  
 CALC frag, m-v calc

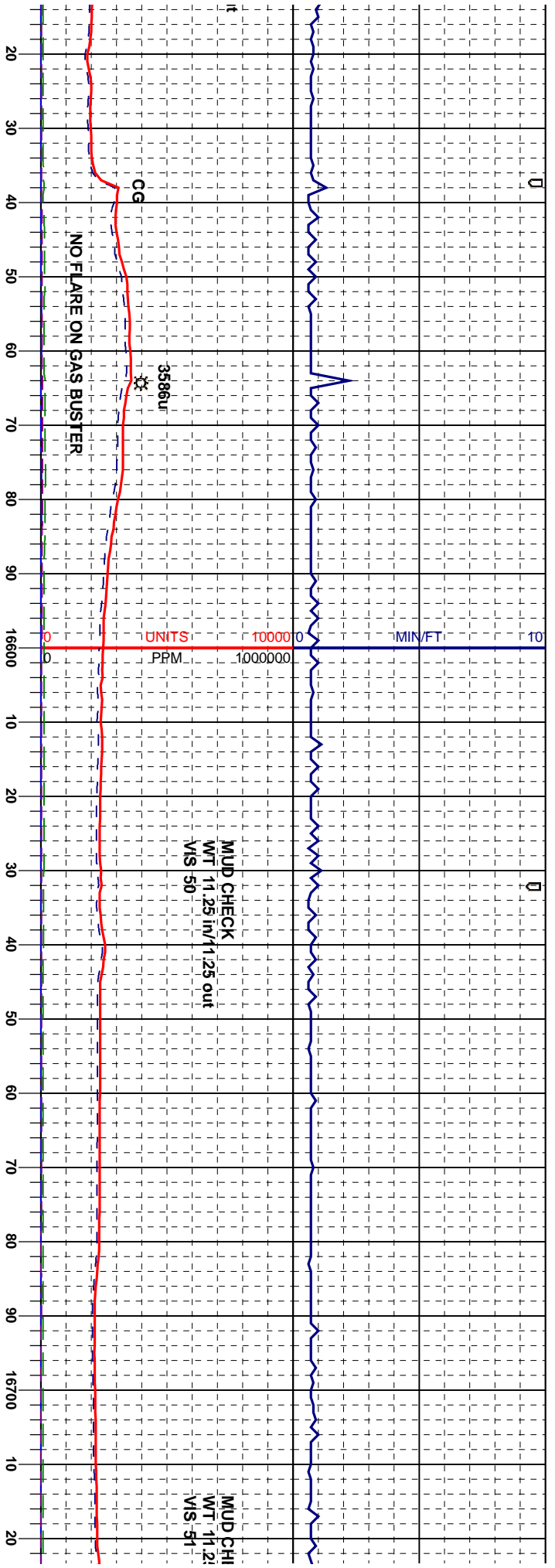
SH: m-dkgybrn, occ dkbrn, sbblky-sbply,  
 mfrm, vs-sl sily lp, rr-tr dk mica, rr wh  
 CALC frag, m-v calc

SH: m-dkgybrn, occ dkbrn, sbblky-sbply,  
 mfrm, vs-sl sily lp, rr-tr dk mica, rr wh  
 CALC frag, m-v calc





SH: m-dkgybrn, occ dkbrn, sbblky-spply, mfrn, vsi-sl sily ip, rr-tr dk mica, rr wh CALC frag, m-v calc	SH: m-dkgybrn, occ dkbrn, sbblky-spply, mfrn, vsi-sl sily ip, rr-tr dk mica, rr wh CALC frag, m-v calc	SH: m-dkgybrn, occ dkbrn, sbblky-spply, mfrn, vsi-sl sily ip, rr-tr dk mica, rr pyr, rr wh CALC frag, m-v calc	SH: m-dkgybrn, occ dkbrn, sbblky-spply, mfrn, vsi-sl sily ip, rr-tr dk mica, rr wh CALC frag, m-v calc	SH: m-dkg mfrn, vsi-sl CALC frag,
--	--	--	--	---



SPL QUALITY IMPROVING SLIGHTLY--  
 COARSE LCM HAS DIMINISHED BUT ABNT  
 FINE LCM REMAINS.

yörn, occ dkörn, sbblky-sbply,  
 slty ip, rr-tr dk mica, rr wh  
 SH: m-dkyörn, occ dkörn, sbblky-sbply,  
 mfrn, vs-sl slty ip, rr-tr dk mica, tr wh  
 CALC frag, m-v calc  
 11200  
 SH: m-dkyörn, occ dkörn, sbblky-sbply,  
 mfrn, vs-sl slty ip, rr-tr dk mica, rr wh  
 CALC frag, m-v calc  
 SH: m-dkyörn, occ dkörn, sbblky-sbply,  
 mfrn, vs-sl slty ip, rr-tr dk mica, rr wh  
 CALC frag, m-v calc  
 SH: m-dkyörn, occ c  
 mfrn, vs-sl slty ip, rr-t  
 CALC frag, m-v calc

10700 0 API 200

