



# WELL LOCATION CERTIFICATE

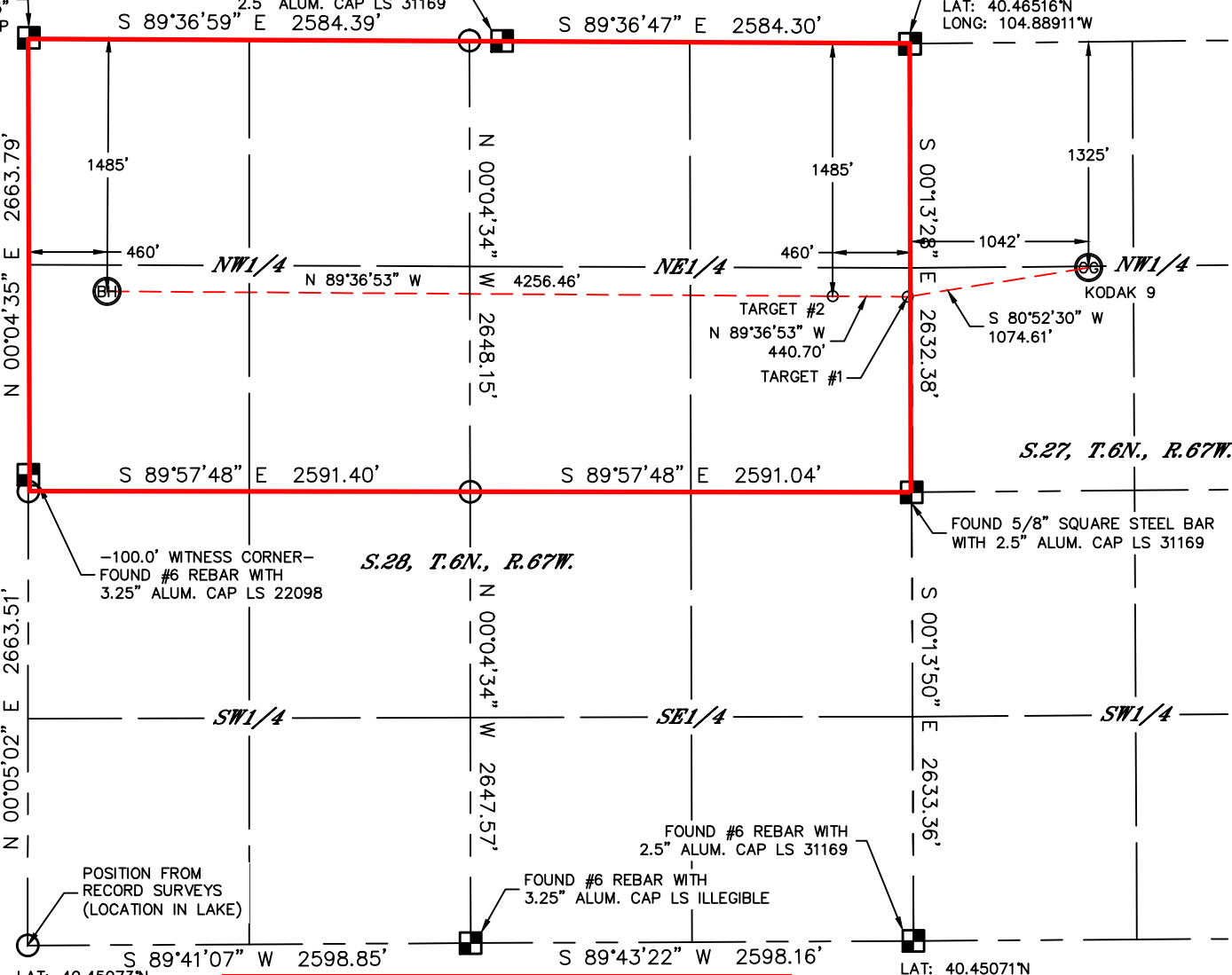
SECTION: 27  
TOWNSHIP: 6N  
RANGE: 67W

LAT: 40.46535°N  
LONG: 104.90768°W

THIS MAP DOES NOT REPRESENT A BOUNDARY SURVEY

FOUND #6 REBAR WITH  
3.25" ALUM. CAP LS 20685  
LAT: 40.46516°N  
LONG: 104.88911°W

FOUND #6 REBAR WITH 3.25" BRASS CAP



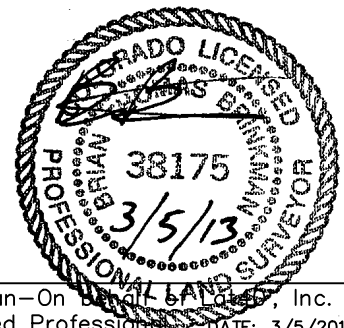
**PROPOSED SPACING UNIT**

LAT: 40.45073°N  
LONG: 104.90784°W

LAT: 40.45071°N  
LONG: 104.88917°W

**NOTE**  
According to Colorado law, you must commence any legal action based upon any defect in this W.L.C. within three years after you discover such defect. In no event, may any action based upon any defect in this survey be commenced more than ten years after the date of the certificate shown hereon. (13-80-105 C.R.S.)

**LEGEND**  
 = ALIQUOT MONUMENT AS DESCRIBED  
 = CALCULATED POSITION



**SHEET 2 OF 2**

Brian T. Brinkman—On behalf of Lat40°, Inc.  
 Colorado Licensed Professional Land Surveyor No. 38175  
 DATE: 3/5/2013  
 PROJECT#: 2012167