



Lat40°, Inc. 1635 Foxtrail Drive, Suite 325 Loveland, CO 970-776-3321

WELL LOCATION CERTIFICATE

SECTION: 27
TOWNSHIP: 6N
RANGE: 67W

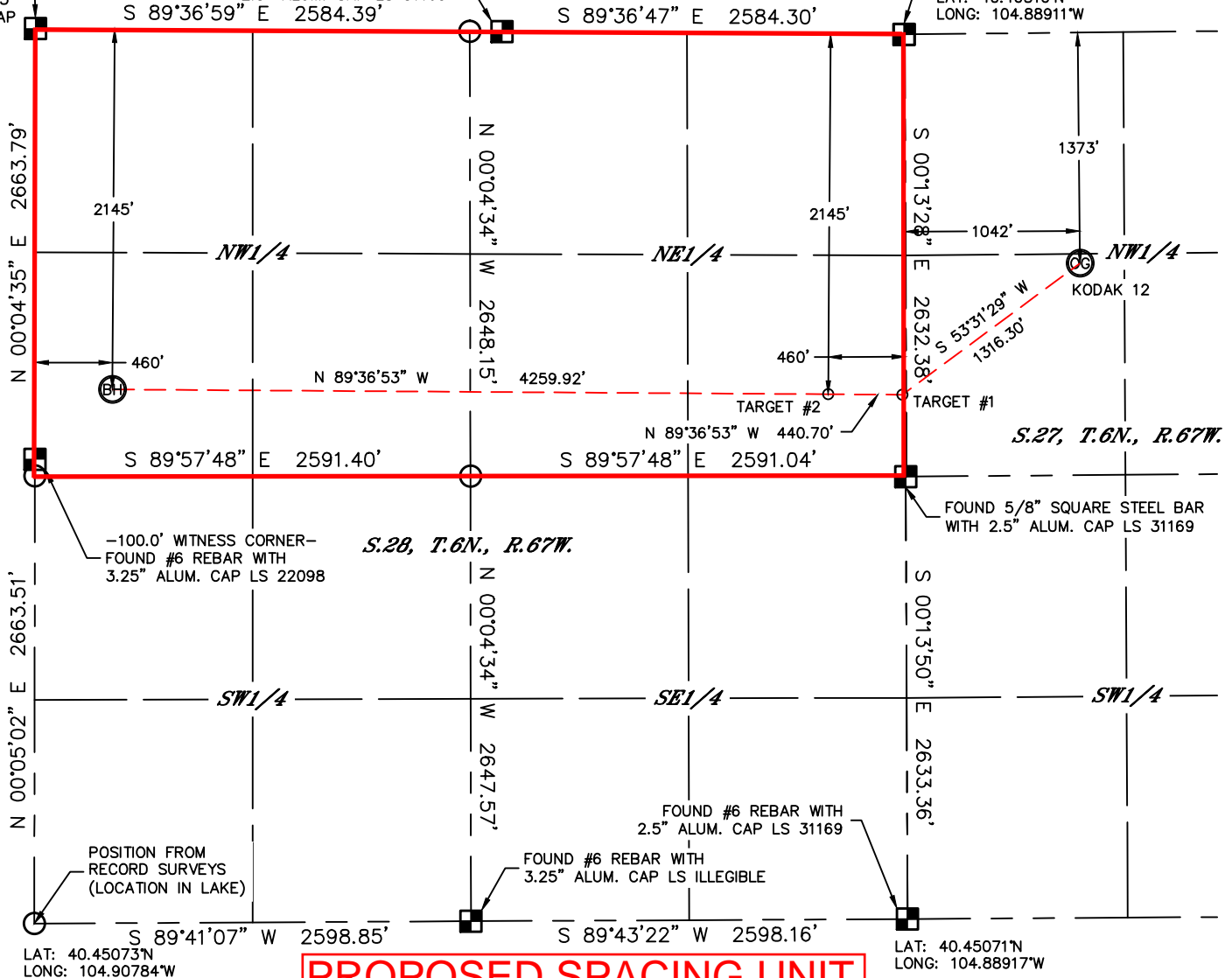
LAT: 40.46535°N
LONG: 104.90768°W

THIS MAP DOES NOT REPRESENT A BOUNDARY SURVEY

FOUND
#6 REBAR
WITH 3.25"
BRASS CAP

-192.3' WITNESS CORNER-
FOUND #6 REBAR WITH
2.5" ALUM. CAP LS 31169

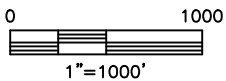
FOUND #6 REBAR WITH
3.25" ALUM. CAP LS 20685
LAT: 40.46516°N
LONG: 104.88911°W



PROPOSED SPACING UNIT

LAT: 40.45073°N
LONG: 104.90784°W

LAT: 40.45071°N
LONG: 104.88917°W



NOTE

According to Colorado law, you must commence any legal action based upon any defect in this W.L.C. within three years after you discover such defect. In no event, may any action based upon any defect in this survey be commenced more than ten years after the date of the certificate shown hereon. (13-80-105 C.R.S.)

LEGEND

- = ALIQUOT MONUMENT AS DESCRIBED
- = CALCULATED POSITION

SHEET 2 OF 2

Brian T. Brinkman—On behalf of Lat40°, Inc.
Colorado Licensed Professional Land Surveyor No. 38175
DATE: 3/5/2013
PROJECT#: 2012167

