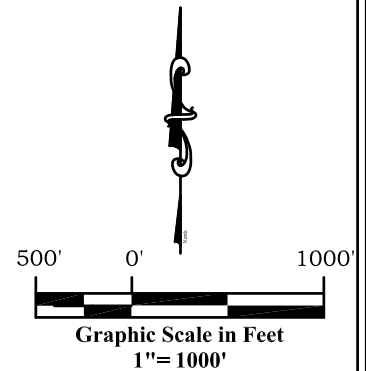
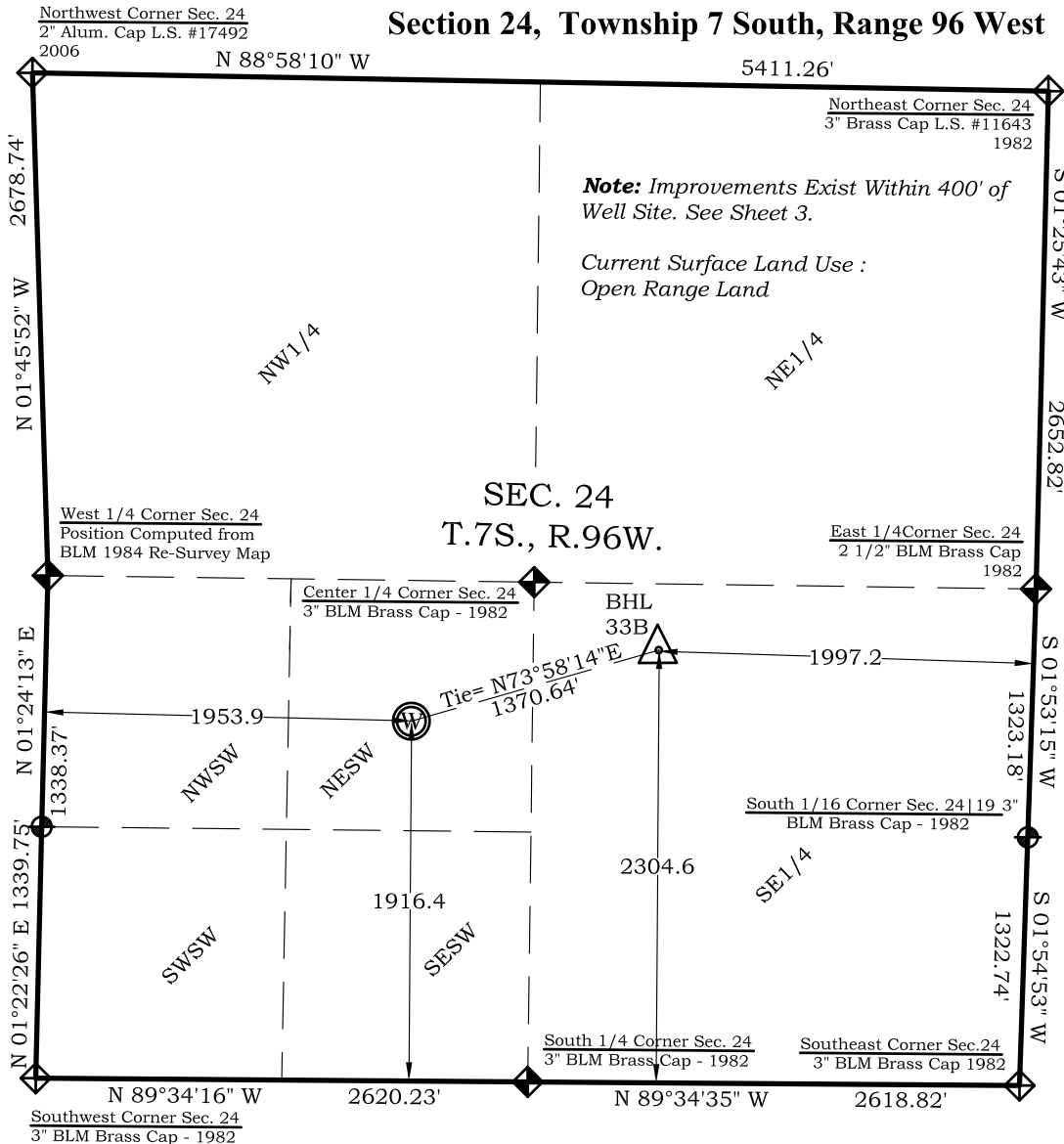


# Well Location Plat BAT 33B-24-07-96

Section 24, Township 7 South, Range 96 West



## Bottom Hole: BAT 33B-24-07-96

2305' FSL

1997' FEL

**NAD83**

Lat: 39.422036880°N  
Long: 108.055779412°W

**NAD27**

Lat: 39.422101801°N  
Long: 108.064564200°W

## Surface: BAT 33B-24-07-96

1916' FSL

1954' FWL

Gnd El= 5183.5

Pad El= 5182.5

**NAD83**

Lat: 39.420876310°N  
Long: 108.060392195°W

**NAD27**

Lat: 39.420898124°N  
Long: 108.059761388°W

UTM 13 NORTH

**NAD 1983**

NORTHING

14330527.991

EASTING

776074.258

## Legend

- ◆ - Field Surveyed Section Corner
- ◆ - Field Surveyed Quarter Corner
- ⊙ - Calculated Section Corner Location
- ⊕ - Field Surveyed 1/6 Corner

## Notes:

1. LATITUDE AND LONGITUDE COORDINATES ARE DIFFERENTIALLY CORRECTED AND BASED ON PUBLISHED NGS CONTROL STATION "KOPESELL". SYSTEM: UTM ZONE: 13 NORTH DATUM: NAD 1983 (CONUS)
2. ELEVATIONS ARE BASED ON NAVD OF 1983.
3. ALL BOTTOM AND TOP HOLE LOCATIONS ARE MEASURED 90 DEGREES FROM SECTION LINE.
4. USGS QUADRANGLE MAP "PARACHUTE".
5. CURRENT SURFACE LAND USE: HAY FIELD.
6. PDOP AT THE TIME OF LOCATION OF SURFACE WELL = 2.4

## SURVEYOR'S CERTIFICATE

I, SCOTT E. AIBNER, A REGISTERED LAND SURVEYOR, LICENSED UNDER THE LAWS OF THE STATE OF COLORADO DO HEREBY CERTIFY THAT THE SURVEY SHOWN HEREON WAS PREPARED BY RIVER VALLEY SURVEY, INC., FOR ANTERO RESOURCES, BY ME OR UNDER MY DIRECT SUPERVISION AND THAT THIS PLAT IS A TRUE REPRESENTATION THEREOF.

SCOTT E. AIBNER  
PROFESSIONAL LAND SURVEYOR  
31143

BY: SCOTT E. AIBNER, COLORADO REG. NO. 31143



**River Valley Survey, Inc.**  
110 East 3rd. Street, Suite 213  
Rifle, Colorado 81650  
Ph: 970-379-7846

**Project:** Speakman A Pad

**Field Date:** 08-05-10

**Date:** 03-28-13

**Scale:** 1"= 1000'

**Sheet:** 1 of 4

**Well Location Plat  
Prepared For Antero Resources**

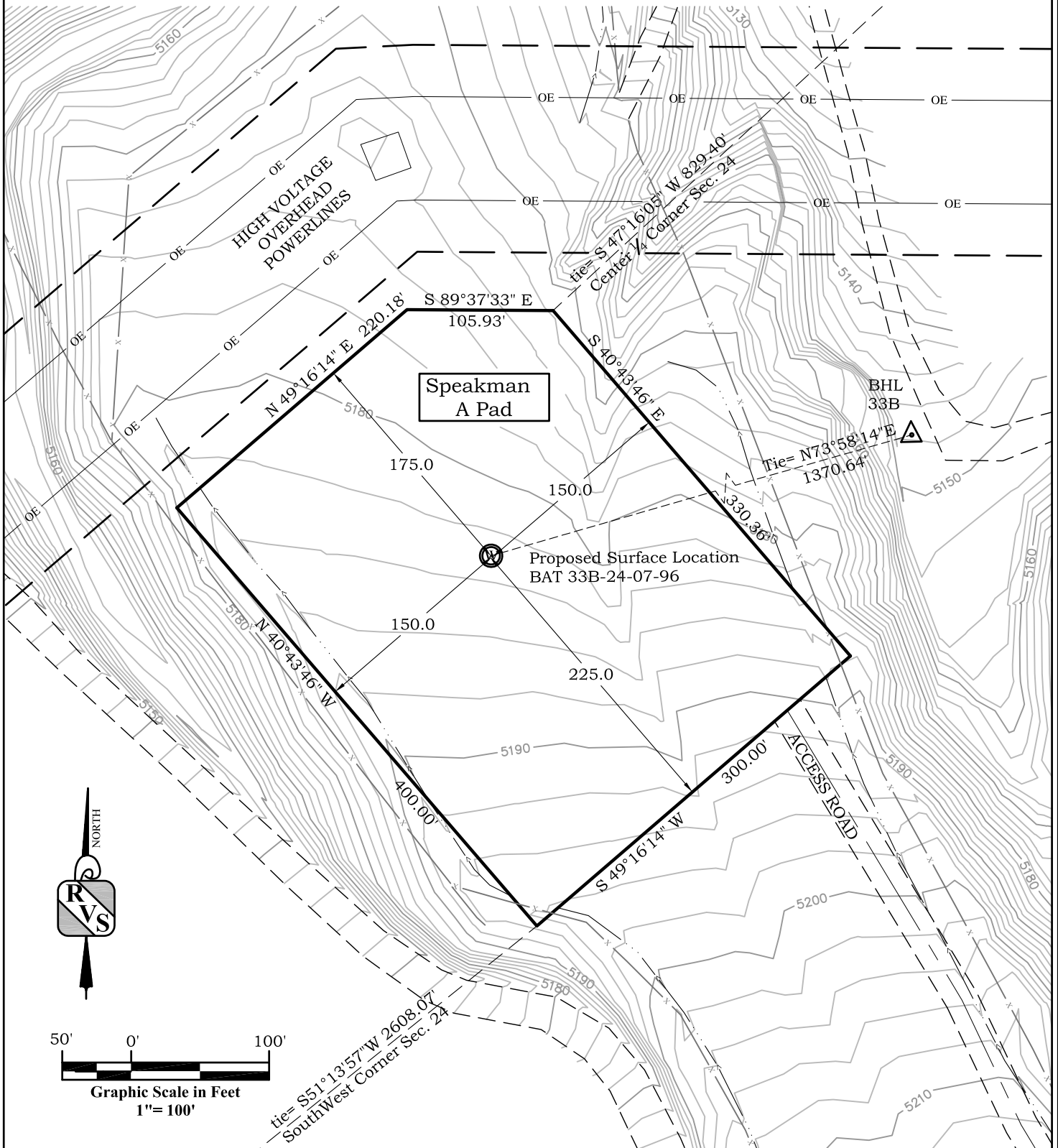
**Situate In:**  
SW 1/4 Section 24, T.7S., R. 96 W. of the  
6th P.M., Garfield County, Colorado



# Location Drawing

## BAT 33B-24-07-96

### Section 24, Township 7 South, Range 96 West



**River Valley Survey, Inc.**  
 110 East 3rd. Street, Suite 213  
 Rifle, Colorado 81650  
 Ph: 970-379-7846

**Project:** Speakman A Pad

**Field Date:** 08-05-10

**Date:** 03-28-13

**Scale:** 1"= 100'

**Sheet:** 2 of 4

**Well Location Plat**  
**Prepared For Antero Resources**

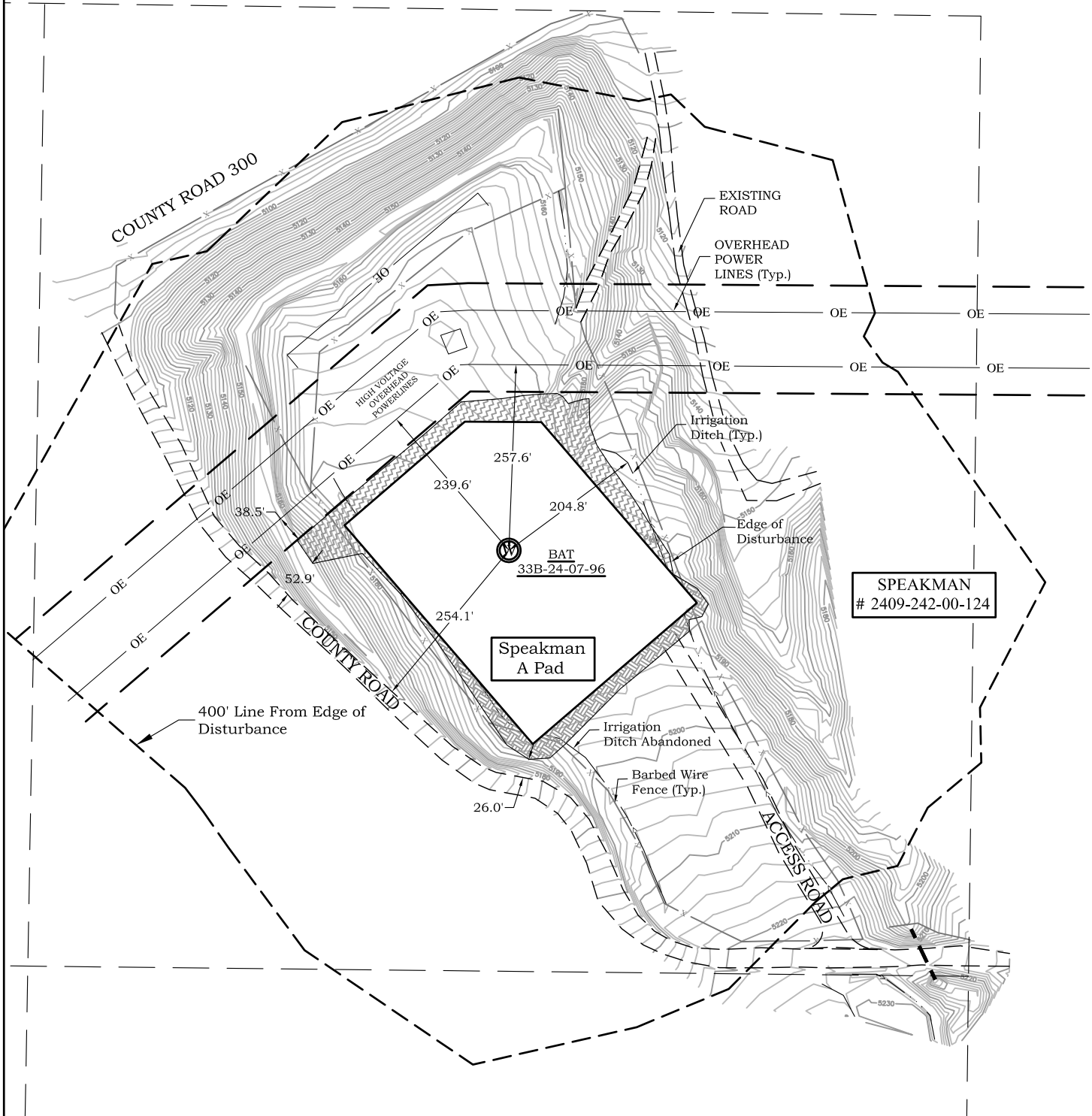
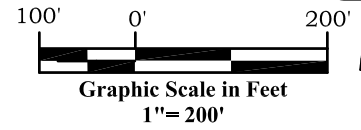
**Situate In:**  
 SW 1/4 Section 24, T7S., R. 96 W. of the  
 6th P.M., Garfield County, Colorado



# Location Drawing

## BAT 33B-24-07-96

### Section 24, Township 7 South, Range 96 West



**River Valley Survey, Inc.**  
110 East 3rd. Street, Suite 213  
Rifle, Colorado 81650  
Ph: 970-379-7846

**Project:** Speakman A Pad

**Field Date:** 08-05-10

**Date:** 03-28-13

**Scale:** 1"=200'

**Sheet:** 3 of 4

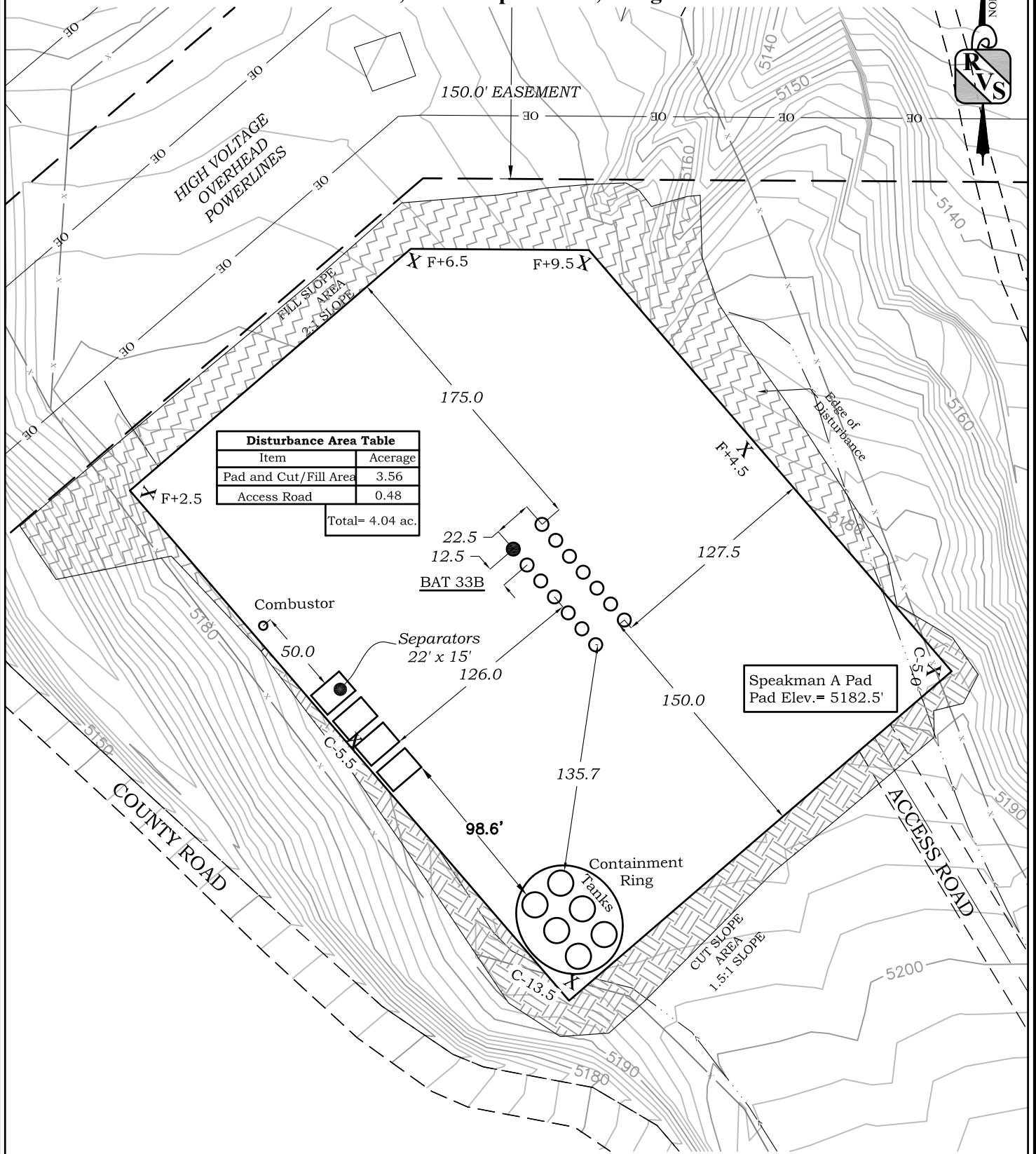
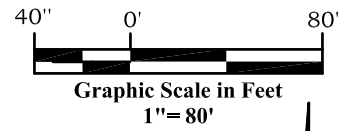
**Well Location Plat**  
**Prepared For Antero Resources**

**Situate In:**  
SW 1/4 Section 24, T7S., R. 96 W. of the  
6th P.M., Garfield County, Colorado





# Facilities and Construction Layout Drawing Speakman A Pad Section 24, Township 7 South, Range 96 West



**River Valley Survey, Inc.**  
110 East 3rd. Street, Suite 213  
Rifle, Colorado 81650  
Ph: 970-379-7846

**Project:** Speakman A Pad

**Field Date:** 08-05-10

**Date:** 03-28-13

**Scale:** 1"= 80'

**Sheet:** 4 of 4

**Well Location Plat  
Prepared For Antero Resources**

**Situate In:**  
SW 1/4 Section 24, T7S., R. 96 W. of the  
6th P.M., Garfield County, Colorado

