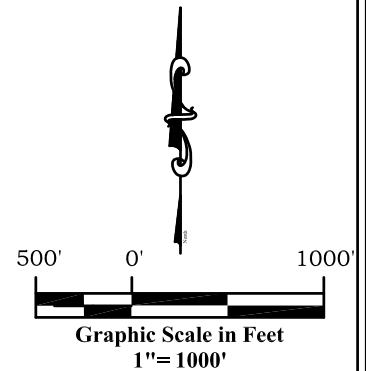
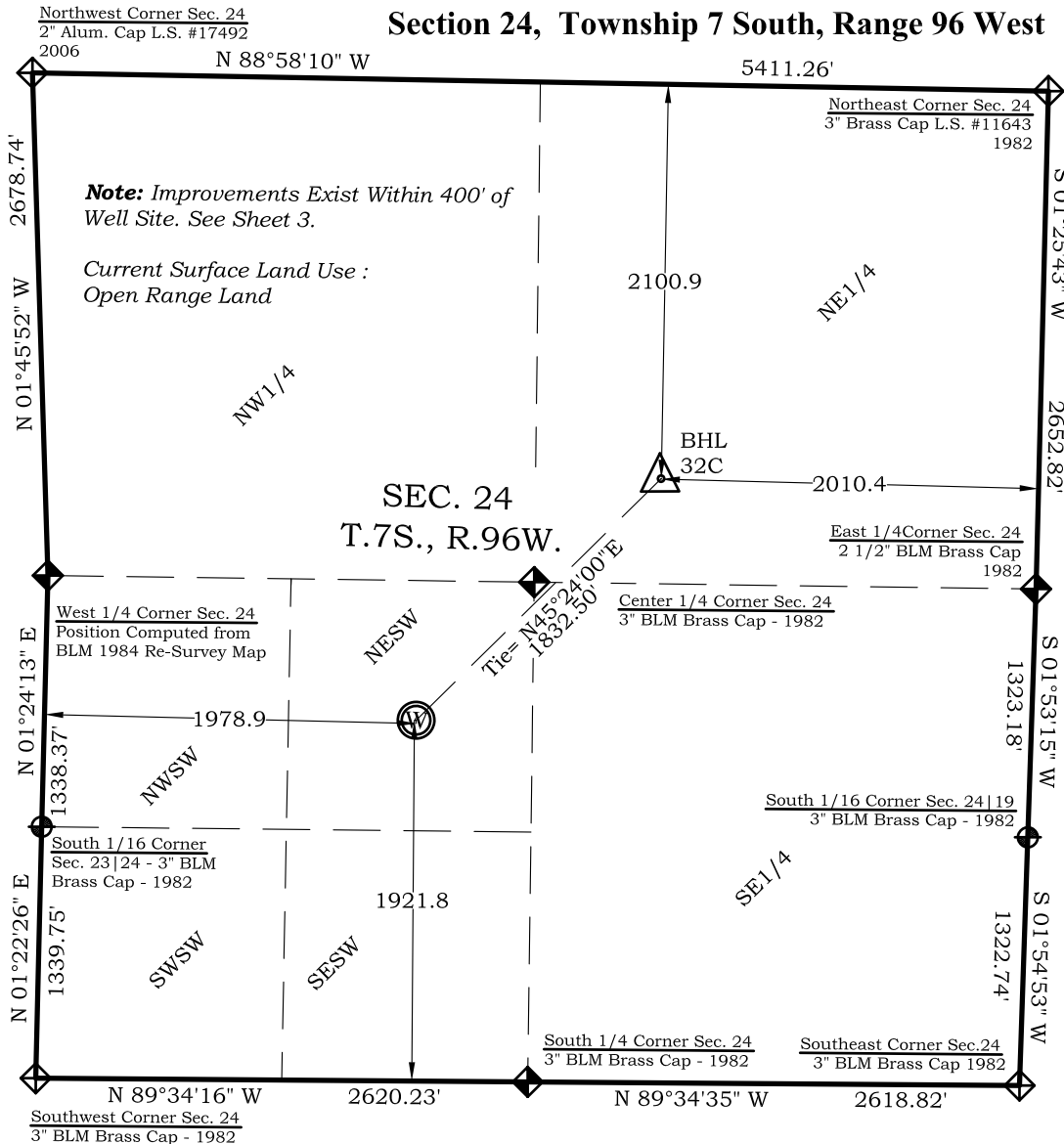


Well Location Plat BAT 32C-24-07-96

Section 24, Township 7 South, Range 96 West



Bottom Hole: BAT 32C-24-07-96

2101' FNL
2010' FEL
NAD83
Lat: 39.424543171°N
Long: 108.055844228°W
NAD27
Lat: 39.424565001°N
Long: 108.055213598°W

Surface: BAT 32C-24-07-96

1922' FSL
1979' FWL
Gnd El= 5182
Pad El= 5182.5
NAD83
Lat: 39.420892941°N
Long: 108.060303690°W
NAD27
Lat: 39.420914755°N
Long: 108.059672887°W
UTM 13 NORTH
NAD 1983
NORTH
14330533.199
EASTING
776099.464

Legend

- ◈ - Field Surveyed Section Corner
- ◈ - Field Surveyed Quarter Corner
- ⊙ - Calculated Section Corner Location
- ⊕ - Field Surveyed 1/6 Corner

Notes:

1. LATITUDE AND LONGITUDE COORDINATES ARE DIFFERENTIALLY CORRECTED AND BASED ON PUBLISHED NGS CONTROL STATION "KOEPSSELL". SYSTEM: UTM ZONE: 13 NORTH DATUM: NAD 1983 (CONUS)
2. ELEVATIONS ARE BASED ON NAVD OF 1983.
3. ALL BOTTOM AND TOP HOLE LOCATIONS ARE MEASURED 90 DEGREES FROM SECTION LINE.
4. USGS QUADRANGLE MAP "PARACHUTE".
5. CURRENT SURFACE LAND USE: HAY FIELD.
6. PDOP AT THE TIME OF LOCATION OF SURFACE WELL = 2.4

SURVEYOR'S CERTIFICATE

I, SCOTT E. AIBNER, A REGISTERED LAND SURVEYOR, LICENSED UNDER THE LAWS OF THE STATE OF COLORADO DO HEREBY CERTIFY THAT THE SURVEY SHOWN HEREON WAS PREPARED BY RIVER VALLEY SURVEY, INC., FOR ANTERO RESOURCES, BY ME OR UNDER MY DIRECT SUPERVISION AND THAT THIS PLAT IS A TRUE REPRESENTATION THEREOF.

SCOTT E. AIBNER
31143
PROFESSIONAL LAND SURVEYOR

BY: SCOTT E. AIBNER, COLORADO REG. NO. 31143



River Valley Survey, Inc.
110 East 3rd. Street, Suite 213
Rifle, Colorado 81650
Ph: 970-379-7846

Project: Speakman A Pad

Field Date: 08-05-10

Date: 03-21-13

Scale: 1"= 1000'

Sheet: 1 of 4

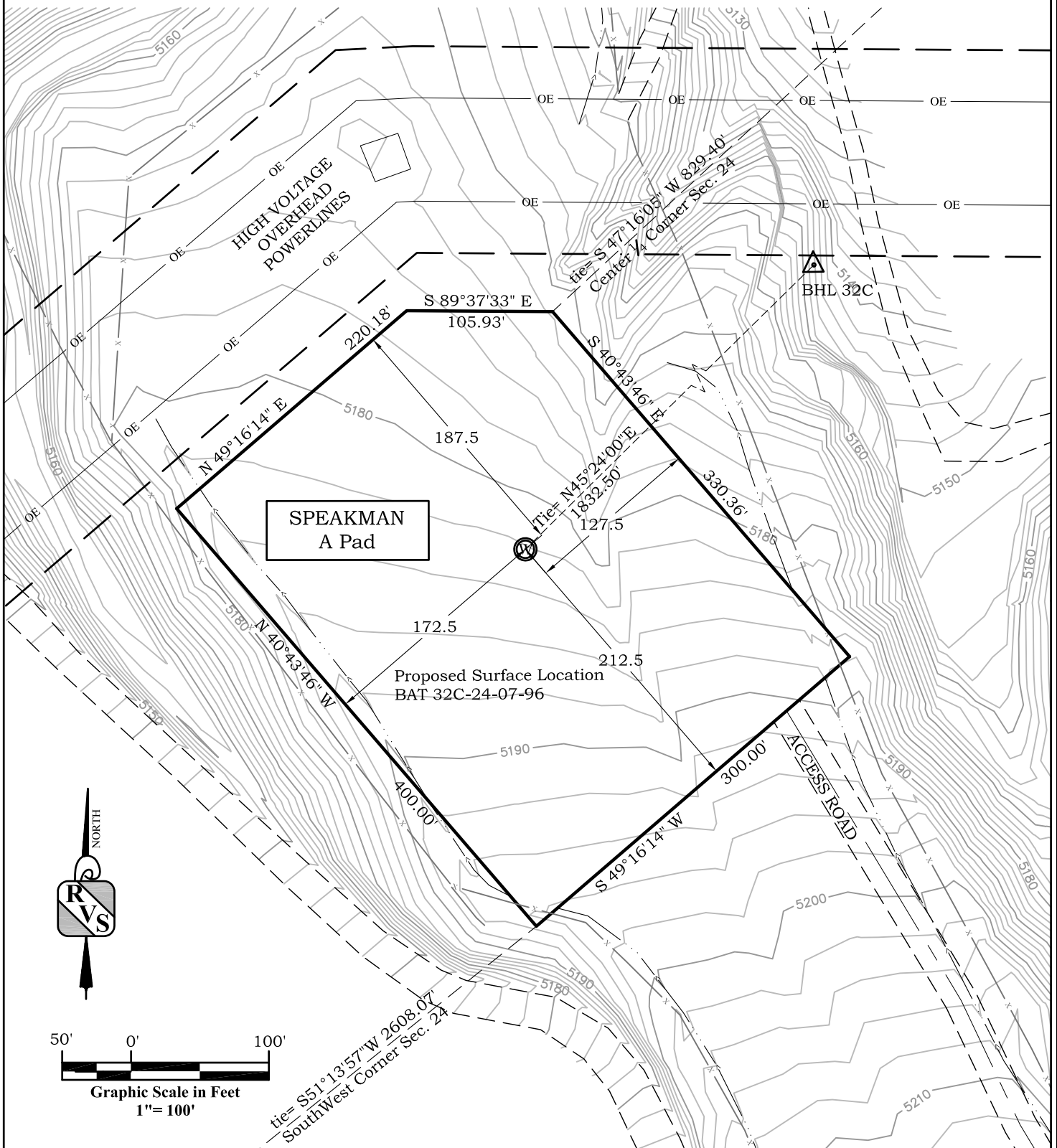
Well Location Plat
Prepared For Antero Resources

Situate In:
SW 1/4 Section 24, T.7S., R. 96 W. of the
6th P.M., Garfield County, Colorado



Location Drawing BAT 32C-24-07-96

Section 24, Township 7 South, Range 96 West



River Valley Survey, Inc.
110 East 3rd. Street, Suite 213
Rifle, Colorado 81650
Ph: 970-379-7846

Project: Speakman A Pad

Field Date: 08-05-10

Date: 03-21-13

Scale: 1"= 100'

Sheet: 2 of 4

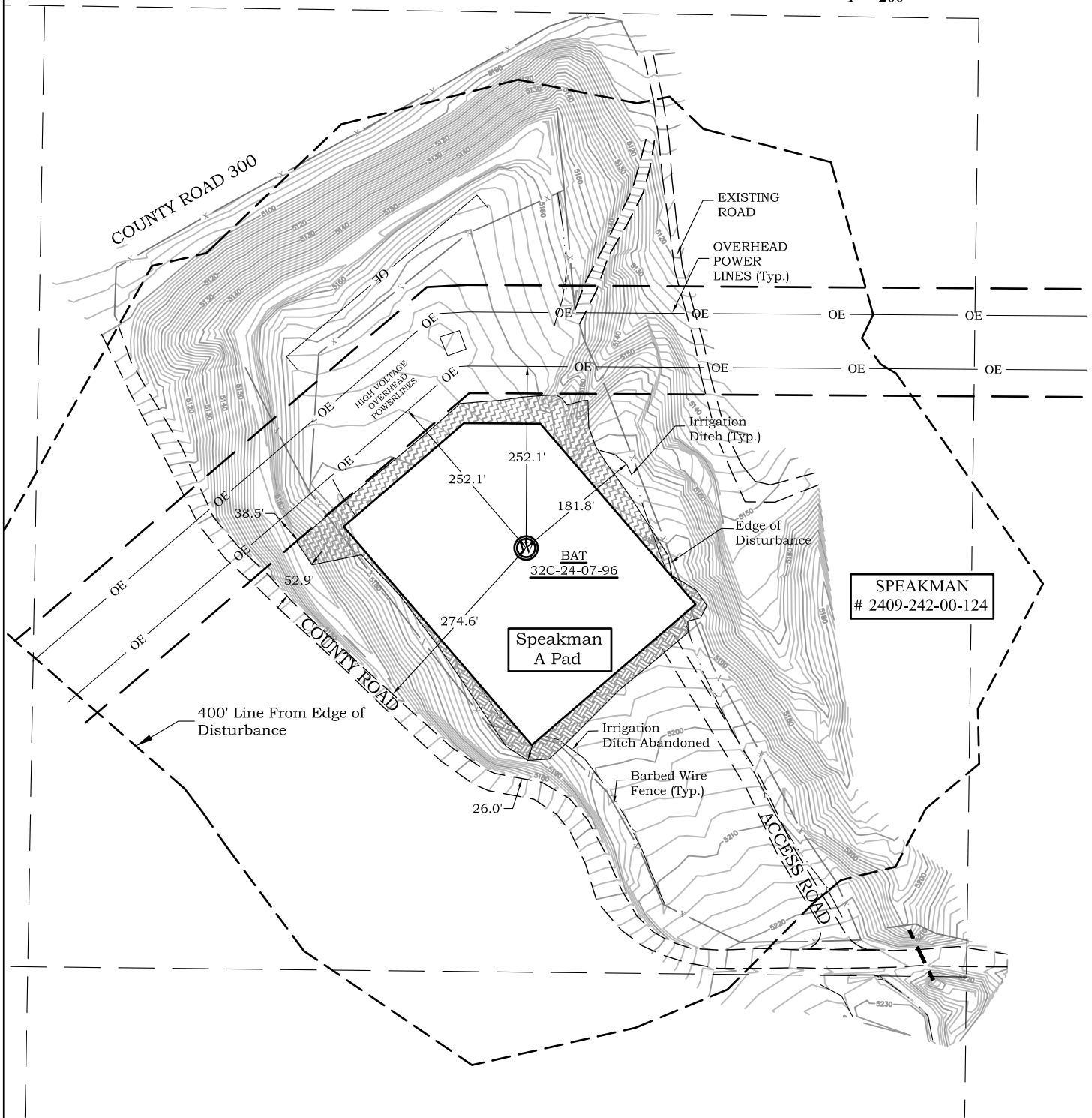
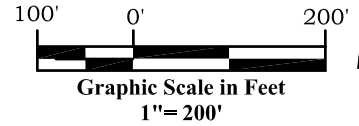
**Well Location Plat
Prepared For Antero Resources**

Situate In:
SW 1/4 Section 24, T7S., R. 96 W. of the
6th P.M., Garfield County, Colorado



Location Drawing BAT 32C-24-07-96

Section 24, Township 7 South, Range 96 West



River Valley Survey, Inc.
110 East 3rd. Street, Suite 213
Rifle, Colorado 81650
Ph: 970-379-7846

Project: Speakman A Pad

Field Date: 08-05-10

Date: 03-21-13

Scale: 1"= 200'

Sheet: 3 of 4

**Well Location Plat
Prepared For Antero Resources**

Situate In:
SW 1/4 Section 24, T7S., R. 96 W. of the
6th P.M., Garfield County, Colorado



Facilities and Construction

Layout Drawing

Speakman A Pad

Section 24, Township 7 South, Range 96 West

40" 0' 80'

Graphic Scale in Feet
1"=80'

NORTH



150.0' EASEMENT

HIGH VOLTAGE
OVERHEAD
POWERLINES

Disturbance Area Table	
Item	Acerage
Pad and Cut/Fill Area	3.56
Access Road	0.48
Total= 4.04 ac.	

175.0

F+2.5

22.5
12.5

BAT 32C

F+4.5

127.5

Combustor

50.0

Separators
22' x 15'

126.0

150.0

Speakman A Pad
Pad Elev.= 5182.5'

135.7

98.6'

Containment
Ring

C-13.5

CUT SLOPE
AREA
1.5:1 SLOPE

5200

COUNTY ROAD

ACCESS ROAD

Well Location Plat

Prepared For Antero Resources

Situate In:

SW 1/4 Section 24, T7S., R. 96 W. of the
6th P.M., Garfield County, Colorado



River Valley Survey, Inc.
110 East 3rd. Street, Suite 213
Rifle, Colorado 81650
Ph: 970-379-7846

Project: Speakman A Pad

Field Date: 08-05-10

Date: 03-21-13

Scale: 1"= 80'

Sheet: 4 of 4