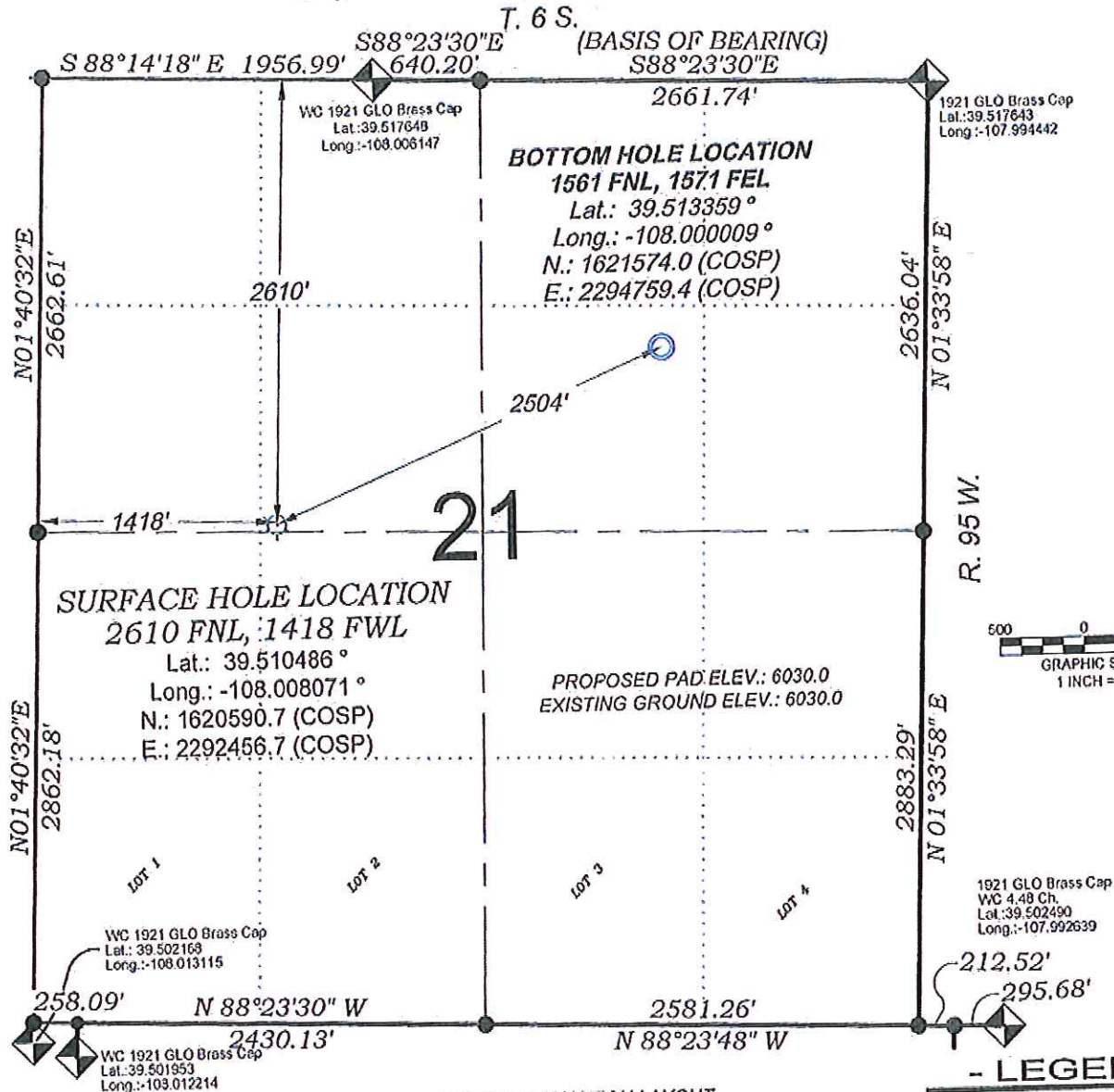


Federal PA 532-21



SURVEYORS STATEMENT

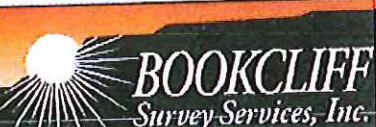
I, MICHAEL J. LANGHORNE, A REGISTERED LAND SURVEYOR IN THE STATE OF COLORADO DO HEREBY CERTIFY THAT THE SURVEY SHOWN HEREON WAS PREPARED UNDER MY DIRECT SUPERVISION AND HAS BEEN STAKED ON THE GROUND AS SHOWN ON THE PLAT AND CHECKING THAT THIS MAP IS A TRUE REPRESENTATION THEREOF.

MICHAEL J. LANGHORNE, COLORADO REGISTRATION NO. 36572
 FOR AND ON BEHALF OF
 BOOKCLIFF SURVEY SERVICES, INC.

REFERENCES

- 1) Resurvey of a Portion and Extension Survey of T. 6 S., R. 95 W., 6 th P.M (GLO PLAT)
- 2) Supplemental Plat of T. 6 S., R. 95 W., 6 th P.M (GLO PLAT)
- 2) U.S.G.S. QUAD: FORKED GULCH, CO and ANVIL POINTS, CO

136 East Third Street
 Rifle, Colorado
 81650 Ph. (970)
 625-2720 Fax (970)
 625-2773



SURVEY DATE: 12/11/12
 MAP DATE: 12/17/12
 SCALE: 1" = 1000'
 PLAT: 1 of 1
 PROJECT: Valley

NOTES

- 1) ELEVATIONS BASED ON N.A.V.D. 1988 PUBLISHED COORDINATES.
- 2) LATITUDES AND LONGITUDES ARE BASE ON NAD 83, PUBLISHED COORDINATES
- 3) STATE PLANE COORDINATES ARE BASED ON COLORADO CENTRAL ZONE, U.S. SURVEY FEET.
- 4) ELEVATION MASK SET TO 15"
- 5) GPS OPERATOR J. KIRKPATRICK, OBSERVED A PDOP 1.9 ON SURVEY POINT NUMBER 290.
- 6) SURFACE AND BOTTOM HOLE LOCATIONS ARE MEASURED 90° FROM SECTION LINES.

WELL LOCATION PLAT Prepared for:
WPXENERGY WPX Energy Rocky Mountain, LLC

SE1/4 NW1/4, SECTION 21
 T. 6 S., R. 95 W. of the 6th. P.M.
 GARFIELD COUNTY, COLORADO