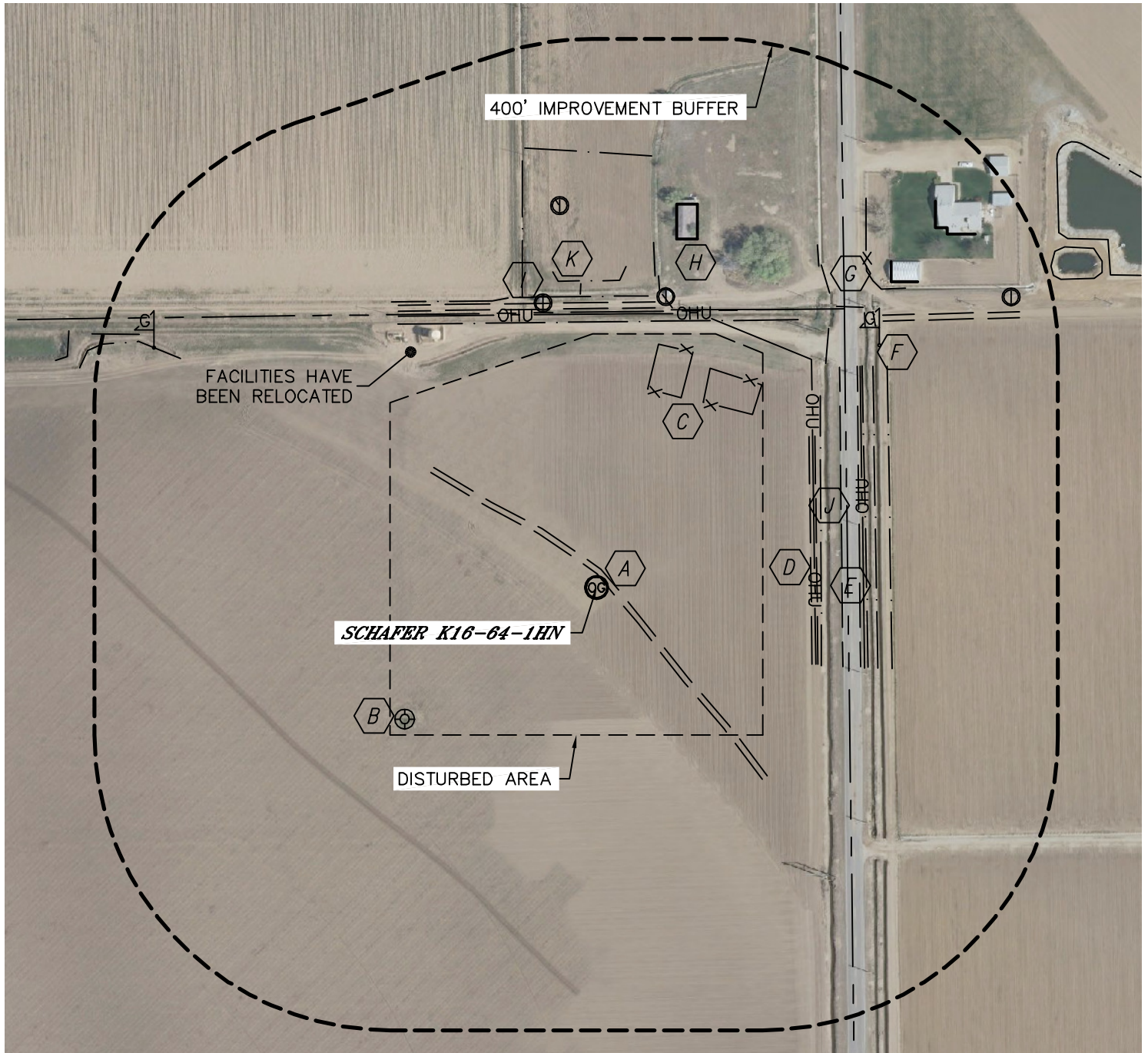


LOCATION DRAWING

SCHAFER K16-64-1HN

SECTION: 16
TOWNSHIP: 4N
RANGE: 66W



IMPROVEMENTS:

- | | |
|-----------------------------------------------------|--------------------------------------------------------------------------|
| (A) FIELD ROAD 12' NE, 290' E, 378' N, 533' NE | (G) FENCE 559' NE |
| (B) EX. OIL & GAS WELL 315' SW | (H) BUILDING 485' NE, 575' & 670' NE |
| (C) EX. PRODUCTION EQUIPMENT (NOBLE) 290' & 281' NE | (I) IRRIGATION PUMP 392' & 520' NW, 405' & 686' NE |
| (D) OVERHEAD UTILITY 296' & 361' E, 370' N | (J) DITCH 304', 366', 379' & 398' E, 360', 394' & 588' N, 430' & 530' NE |
| (E) COUNTY ROAD 31 332' E | (K) POND 416' N, 749' & 789' NE, 782' NW |
| (F) GAS LINE MARKER 504' NE, 682' NW | |

NEAREST: BUILDING 485' NE, PUBLIC ROAD 332' E (CR 31),
ABOVE GROUND UTILITY 296' E, RAILROAD 5280'+ SE, PROPERTY LINE 340' E

