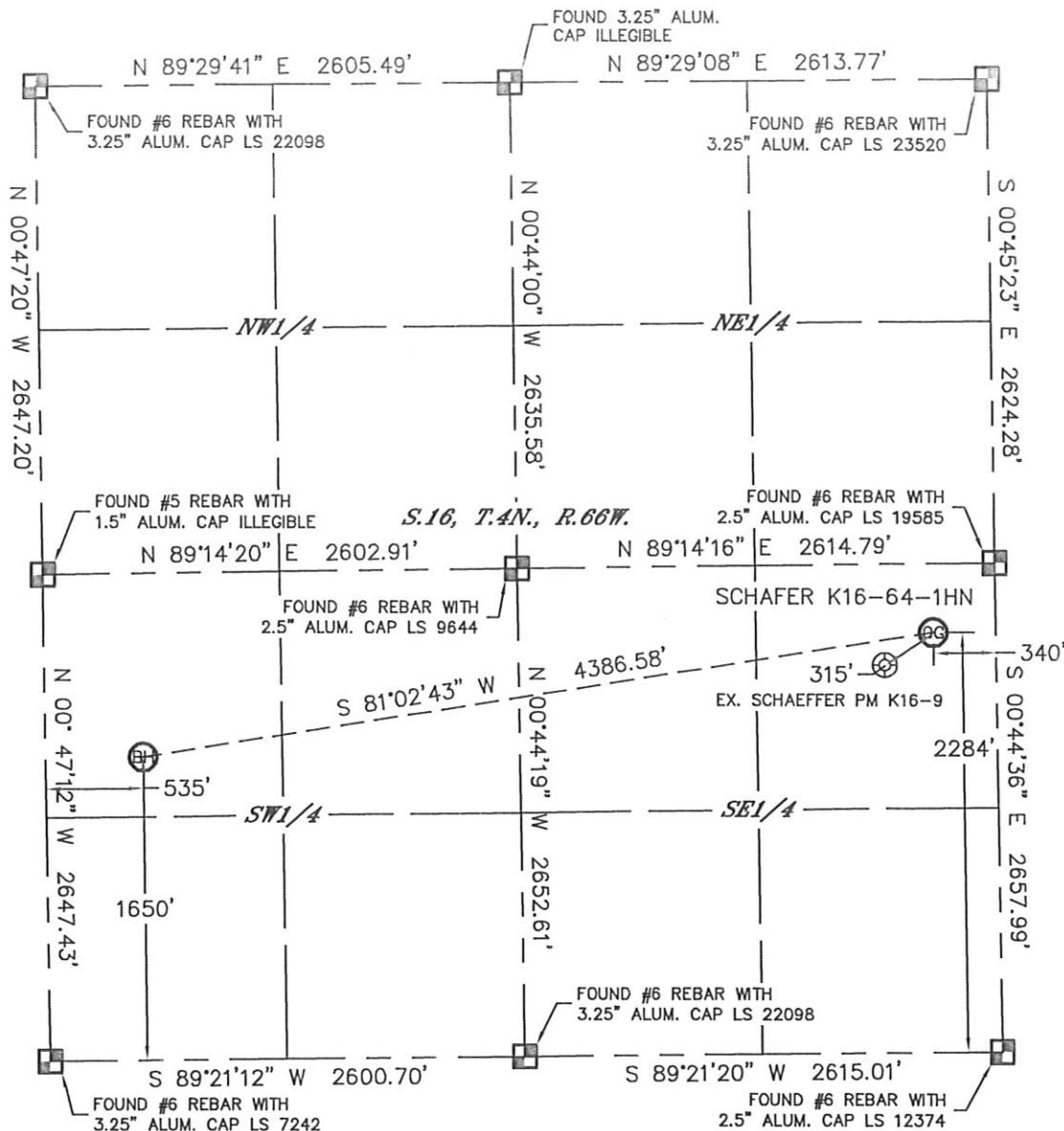


WELL LOCATION CERTIFICATE

THIS MAP DOES NOT REPRESENT A BOUNDARY SURVEY

SECTION: 16
TOWNSHIP: 4N
RANGE: 66WIn accordance with a request from Jacob Rice with Noble Energy Inc.

Lat40°, Inc. has determined the surface location of the SCHAEFER K16-64-1HN to be 2284' from the SOUTH line and 340' from the EAST line and the bottom hole to be 1650' from the SOUTH line and 535' from the WEST line as measured at right angles from the section lines of Section 16, Township 4 North, Range 66 West of the Sixth Principal Meridian, County of Weld, State of Colorado.

I hereby state that this Well Location Certificate was prepared by me, or under my direct supervision, that the fieldwork was completed on 11/30/11, for and on behalf of Noble Energy Inc. That this is not a Land Survey Plat or an Improvement Survey Plat, and that it is not to be relied upon for establishment of fence, building, or other future improvement lines.

SURFACE LOCATION

LATITUDE: 40.31069°N
LONGITUDE: 104.77442°W
PDOP: 1.9
ELEV: 4744'
1/4, 1/4: NE1/4SE1/4
NEAREST PROPERTY LINE: 340' EAST

BOTTOM HOLE

LATITUDE: 40.30892°N
LONGITUDE: 104.78997°W

NOTE:

- 1) Bearings shown are Grid Bearings of the Colorado State Plane Coordinate System, North Zone, North American Datum 1983/2007. The lineal dimensions as contained herein are based upon the "U.S. Survey Foot."
- 2) Ground elevations are based on an observed GPS elevation (NAVD 1988 DATUM).
- 3) NEAREST EXISTING WELL: SCHAEFFER PM K16-9, 315'
- 4) IMPROVEMENTS: See LOCATION DRAWING for all visible improvements within 400' of disturbed area.
- 5) SURFACE USE: CROP LAND
- 6) INSTRUMENT OPERATOR: ADAM KELLY

LEGEND



= ALIQUOT MONUMENT AS DESCRIBED

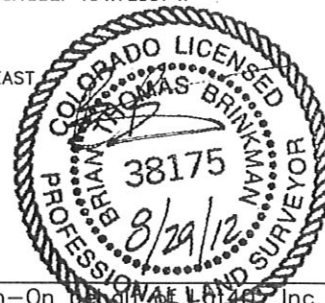


= CALCULATED POSITION

NOTE
According to Colorado law, you must commence any legal action based upon any defect in this W.L.C. within three years after you discover such defect. In no event, may any action based upon any defect in this survey be commenced more than ten years after the date of the certificate shown hereon. (13-80-105 C.R.S.)

Brian T. Brinkman-On Behalf of Lat40°, Inc.

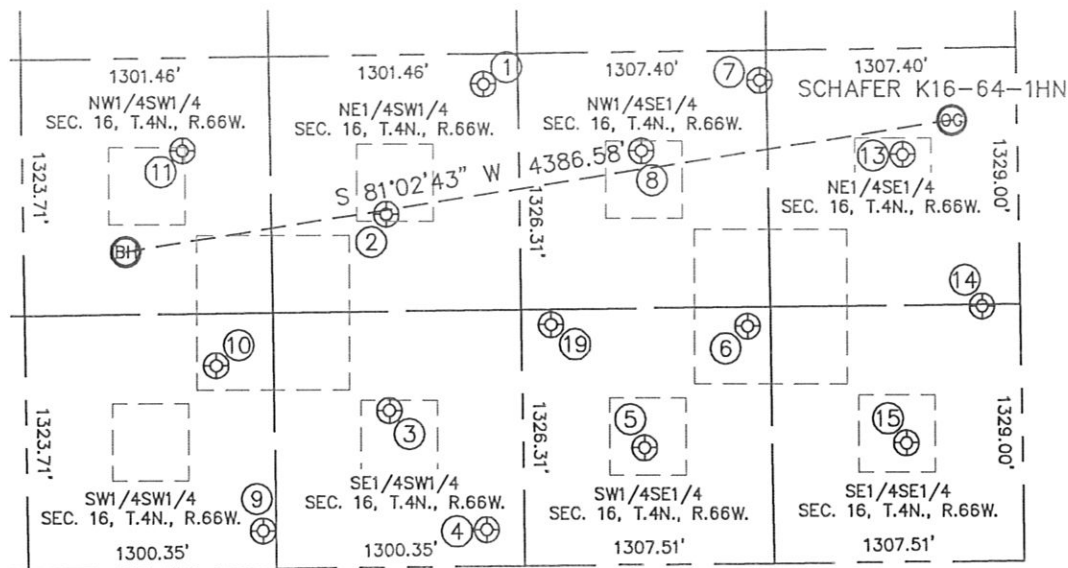
Colorado Licensed Professional Land Surveyor No. 38175
DATE: rev 8/29/12
PROJECT#: 2011332



SITE SKETCH

SCHAFFER K16-64-1HN

SECTION: 16
TOWNSHIP: 4N
RANGE: 66W



①

HAREN K16-21
NE1/4SW1/4
2496' FSL
2422' FWL
LAT-40.31125°N
LONG-104.78323°W
PDOP: 1.5
ELEV: 4735'

②

SMITS PM K16-11
NE1/4SW1/4
1827' FSL
1902' FWL
LAT-40.30941°N
LONG-104.78508°W
PDOP: 2.7
ELEV: 4736'

③

SMITS PM K16-14
SE1/4SW1/4
812' FSL
1903' FWL
LAT-40.30663°N
LONG-104.78505°W
PDOP: 2.2
ELEV: 4741'

④

HAREN K21-28
SE1/4SW1/4
190' FSL
2402' FWL
LAT-40.30493°N
LONG-104.78325°W
PDOP: 2.7
ELEV: 4748'

⑤

WEBER 1
SW1/4SE1/4
606' FSL
1978' FEL
LAT-40.30607°N
LONG-104.78026°W
PDOP: 1.6
ELEV: 4748'

⑥

WEBER K16-23
SW1/4SE1/4
1229' FSL
1428' FEL
LAT-40.30779°N
LONG-104.77830°W
PDOP: 3.2
ELEV: 4747'

⑦

WEBER K16-22
NW1/4SE1/4
2501' FSL
1345' FEL
LAT-40.31128°N
LONG-104.77803°W
PDOP: 1.7
ELEV: 4739'

⑧

WEBER PM K16-10
NW1/4SE1/4
2142' FSL
1970' FEL
LAT-40.31029°N
LONG-104.78026°W
PDOP: 1.9
ELEV: 4738'

⑨

HAREN K21-29
SW1/4SW1/4
197' FSL
1232' FWL
LAT-40.30493°N
LONG-104.78744°W
PDOP: 1.8
ELEV: 4741'

⑩

SMITS 1
SW1/4SW1/4
1054' FSL
999' FWL
LAT-40.30729°N
LONG-104.78830°W
PDOP: 1.5
ELEV: 4739'

⑪

SMITS 16-1216
NW1/4SW1/4
2170' FSL
841' FWL
LAT-40.31034°N
LONG-104.78889°W
PDOP: 1.6
ELEV: 4737'

⑬

SCHAEFFER PM K16-9
NE1/4SE1/4
2109' FSL
603' FEL
LAT-40.31021°N
LONG-104.77536°W
PDOP: 1.9
ELEV: 4744'

⑭

SCHAFFER K15-33
SE1/4SE1/4
1320' FSL
197' FEL
LAT-40.30805°N
LONG-104.77389°W
PDOP: 3.3
ELEV: 4747'

⑮

WEBER 2
SE1/4SE1/4
616' FSL
606' FEL
LAT-40.30611°N
LONG-104.77535°W
PDOP: 2.1
ELEV: 4747'

⑰

WEBER K16-24
SW1/4SE1/4
1247' FSL
2459' FEL
LAT-40.30783°N
LONG-104.78200°W
PDOP: 1.6
ELEV: 4743'

