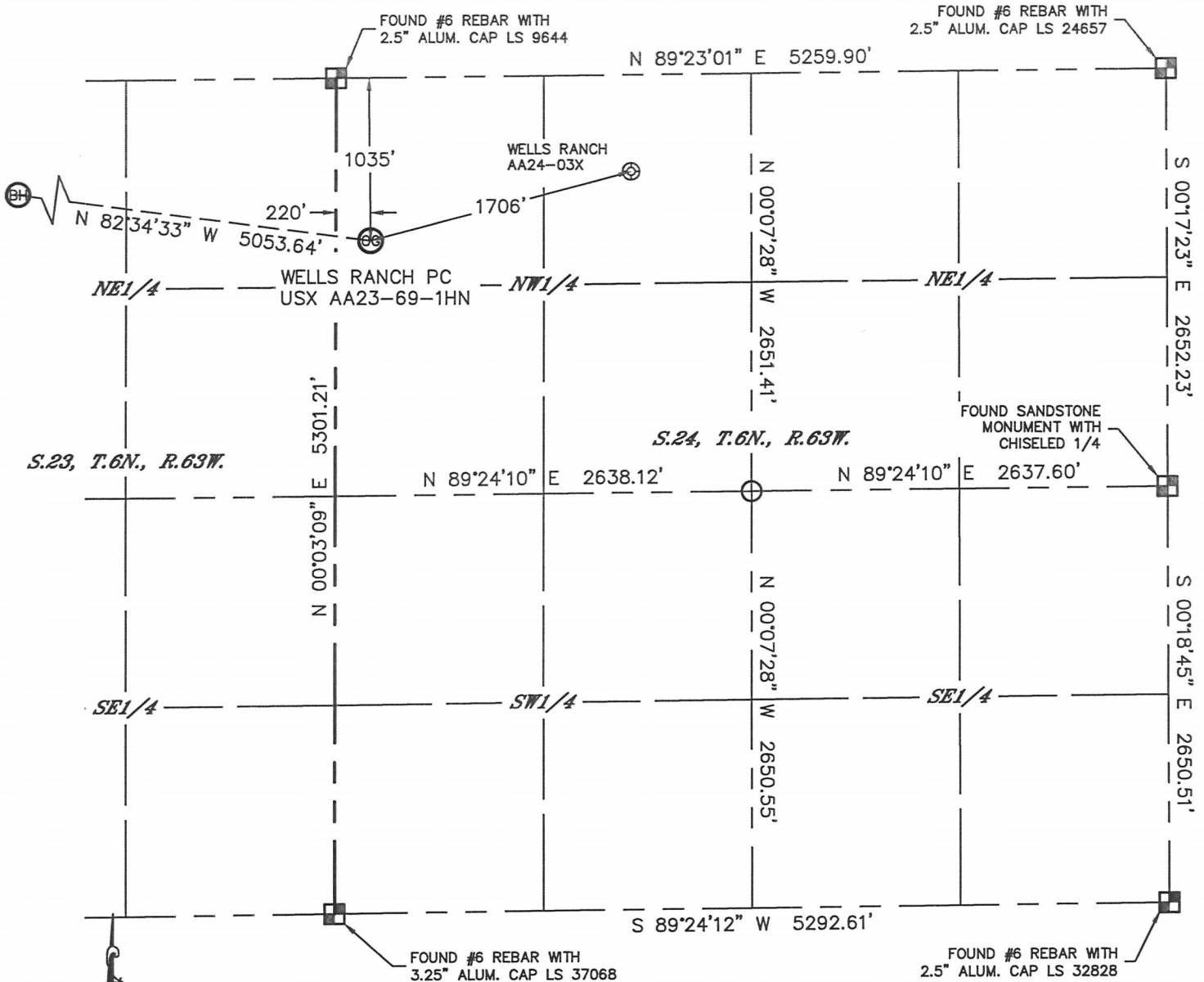


WELL LOCATION CERTIFICATE

THIS MAP DOES NOT REPRESENT A BOUNDARY SURVEY

SECTION: 24
TOWNSHIP: 6N
RANGE: 63W



In accordance with a request from Greg Wilson with Noble Energy Inc. Lat40°, Inc. has determined the surface location of the WELLS RANCH PC USX AA23-69-1HN to be 1035' from the NORTH line and 220' from the WEST line as measured at right angles from the section lines of Section 24, Township 6 North, Range 63 West and the bottom hole to be 330' from the NORTH line and 535' from the WEST line as measured at right angles from the section lines of Section 23, Township 6 North, Range 63 West of the Sixth Principal Meridian, County of Weld, State of Colorado.

I hereby state that this Well Location Certificate was prepared by me, or under my direct supervision, that the fieldwork was completed on 6/21/2012, for and on behalf of Noble Energy Inc. That this is not a Land Survey Plat or an Improvement Survey Plat, and that it is not to be relied upon for establishment of fence, building, or other future improvement lines.

SURFACE LOCATION

LAT: 40.47645N
LONG: 104.39360W
PDOP: 1.6
ELEV: 4792'
1/4,1/4: NW1/4NW1/4
NEAREST PROPERTY LINE: 220' WEST

BOTTOM HOLE

LAT: 40.47841N
LONG: 104.41158W

NOTE:

- 1) Bearings shown are Grid Bearings of the Colorado State Plane Coordinate System, North Zone, North American Datum 1983/2007. The lineal dimensions as contained herein are based upon the "U.S. Survey Foot."
- 2) Ground elevations are based on an observed GPS elevation (NAVD 1988 DATUM).
- 3) NEAREST EXISTING WELL: WELLS RANCH AA24-03X, 1706'
- 4) IMPROVEMENTS: See LOCATION DRAWING for all visible improvements within 400' of disturbed area.
- 5) SURFACE USE: RANGELAND
- 6) INSTRUMENT OPERATOR: ADAM KELLY

NOTE

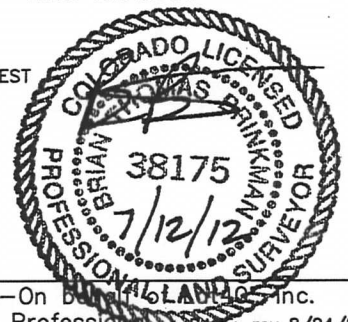
According to Colorado law, you must commence any legal action based upon any defect in this W.L.C. within three years after you discover such defect. In no event, may any action based upon any defect in this survey be commenced more than ten years after the date of the certificate shown hereon. (13-80-105 C.R.S.)

LEGEND

- = ALIQUOT MONUMENT AS DESCRIBED
- = CALCULATED POSITION

SHEET 1 OF 2

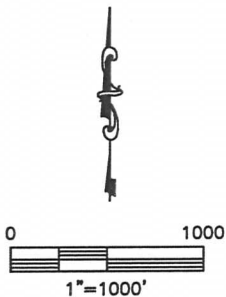
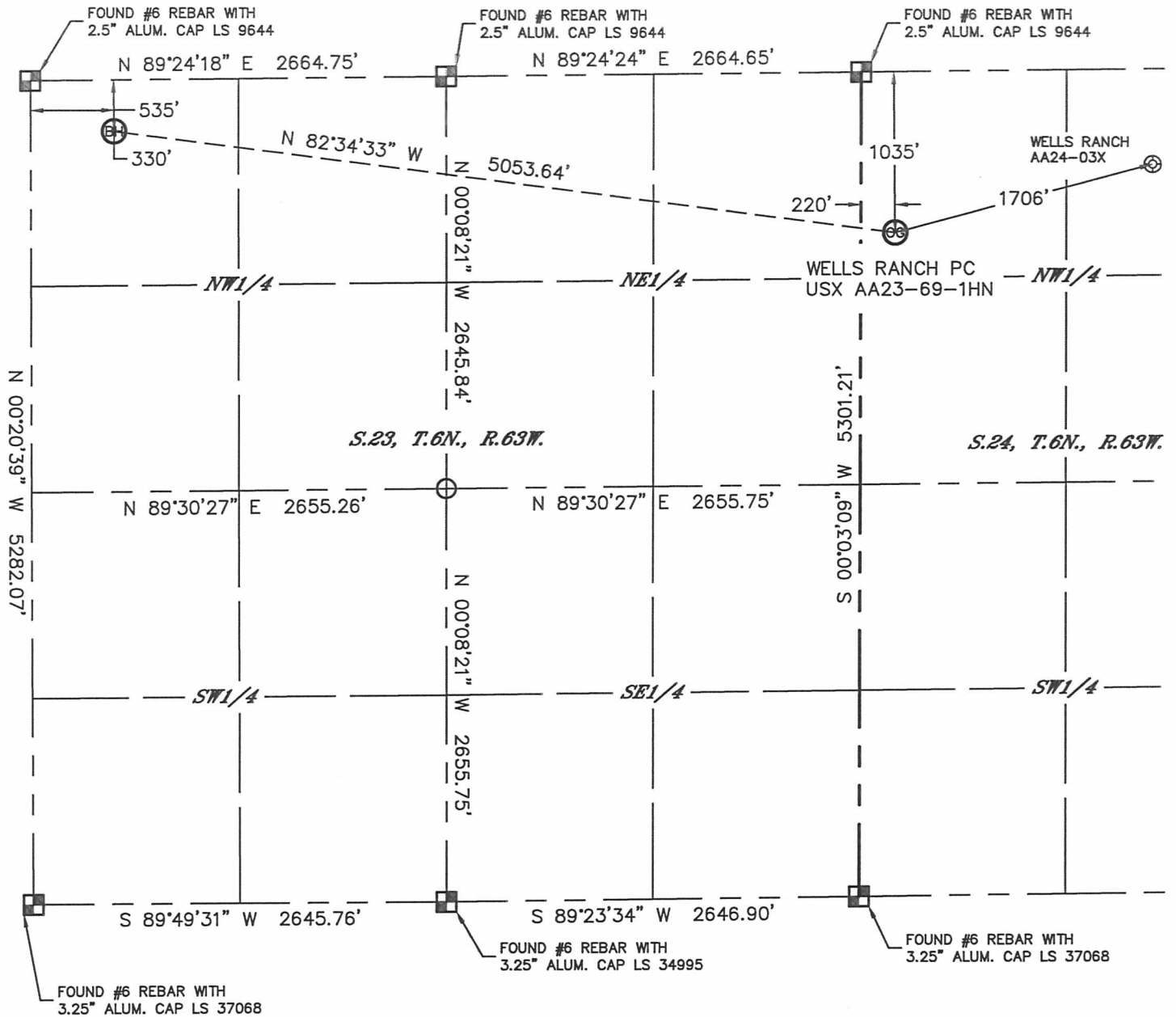
Brian T. Brinkman-On behalf of Lat40°, Inc.
Colorado Licensed Professional Land Surveyor No. 38175
DATE: rev 8/24/2012
PROJECT#: 2012094



WELL LOCATION CERTIFICATE

THIS MAP DOES NOT REPRESENT A BOUNDARY SURVEY



SECTION: 24
TOWNSHIP: 6N
RANGE: 63W

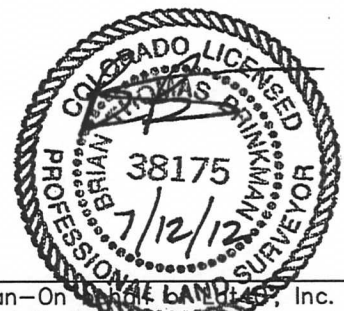


NOTE

According to Colorado law, you must commence any legal action based upon any defect in this W.L.C. within three years after you discover such defect. In no event, may any action based upon any defect in this survey be commenced more than ten years after the date of the certificate shown hereon. (13-80-105 C.R.S.)

LEGEND

-  = ALIQUOT MONUMENT AS DESCRIBED
-  = CALCULATED POSITION



SHEET 2 OF 2

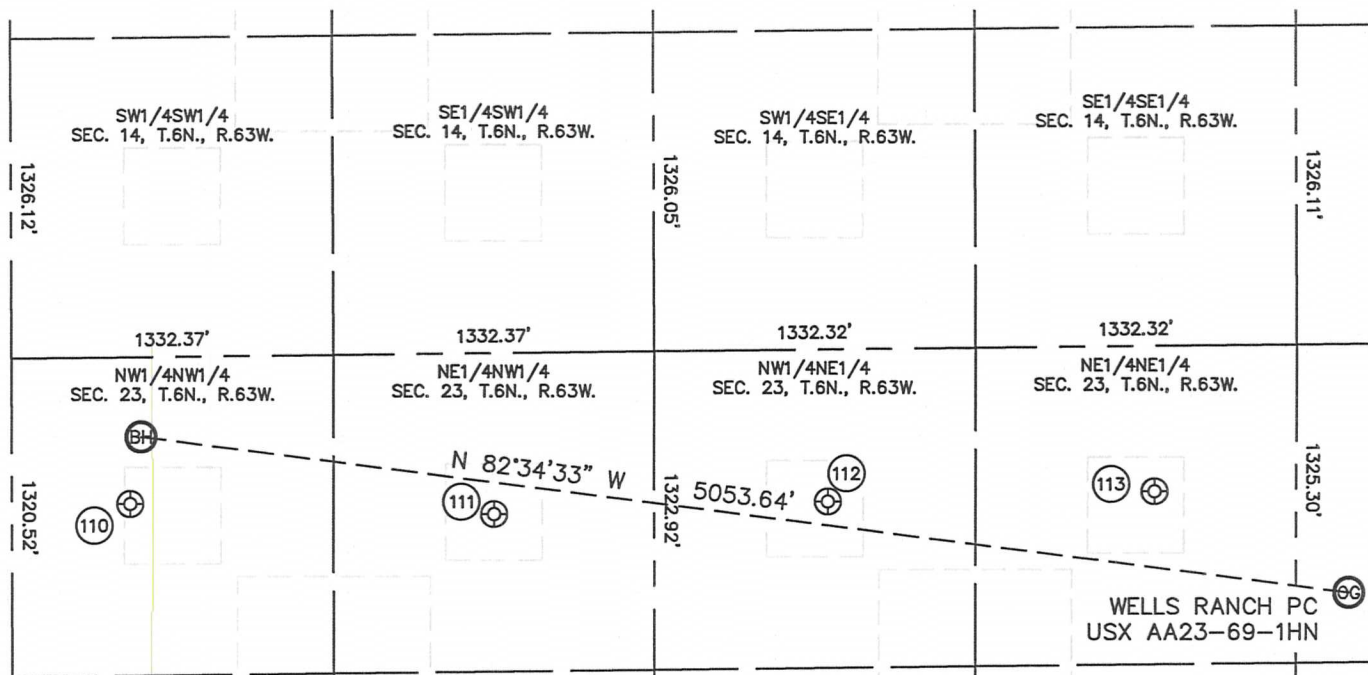
Brian T. Brinkman-On Demand Land, Inc.
Colorado Licensed Professional Surveyor No. 38175
DATE: rev 8/24/2012
PROJECT#: 2012094

Lat40°, Inc. 1635 Foxtrail Drive, Suite 325 Loveland, CO 970-776-3321

SITE SKETCH

WELLS RANCH PC USX AA23-69-1HN

SECTION: 24
TOWNSHIP: 6N
RANGE: 63W



110

WELLS RANCH USX
AA23-04
NW1/4NW1/4
609' FNL
490' FWL
LAT-40.47764°N
LONG-104.41175°W
PDOP: 1.6
ELEV: 4747'

111

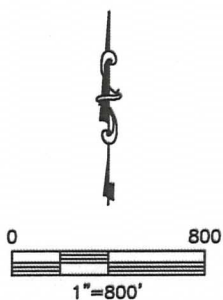
WELLS RANCH USX
AA23-03
NE1/4NW1/4
668' FNL
1997' FWL
LAT-40.47747°N
LONG-104.40633°W
PDOP: 1.5
ELEV: 4759'

112

WELLS RANCH USX
AA23-02
NW1/4NE1/4
632' FNL
1943' FEL
LAT-40.47756°N
LONG-104.40136°W
PDOP: 1.3
ELEV: 4781'

113

WELLS RANCH USX
AA23-01
NE1/4NE1/4
605' FNL
589' FEL
LAT-40.47763°N
LONG-104.39649°W
PDOP: 1.3
ELEV: 4776'



DATE: rev 7/16/2012
PROJECT#: 2012094