

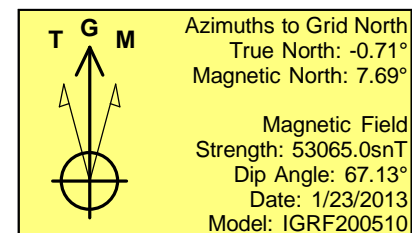
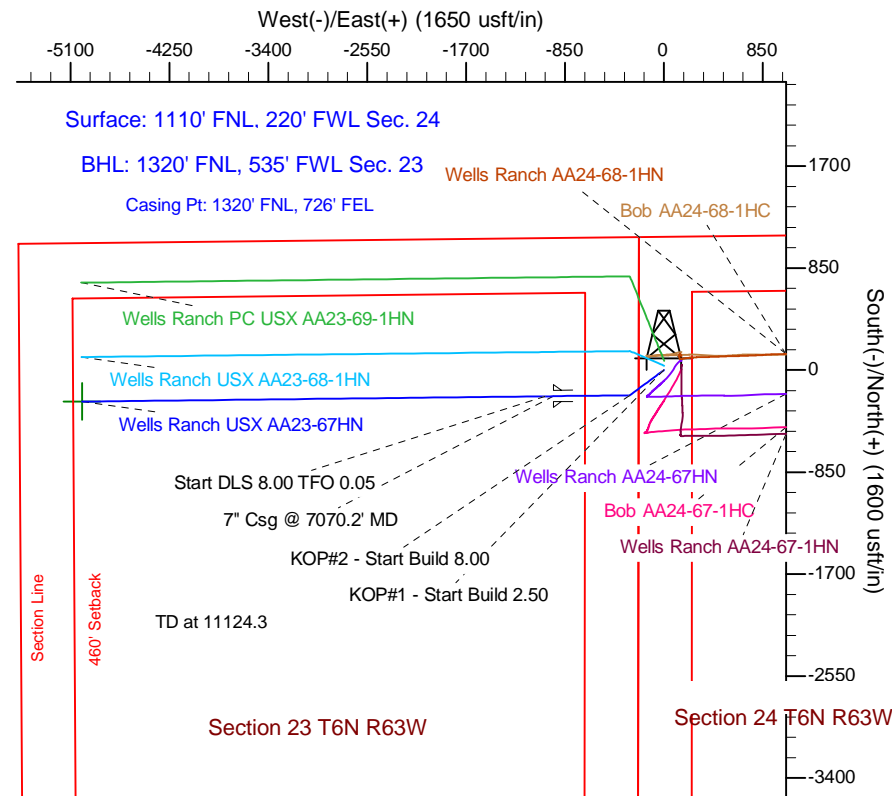
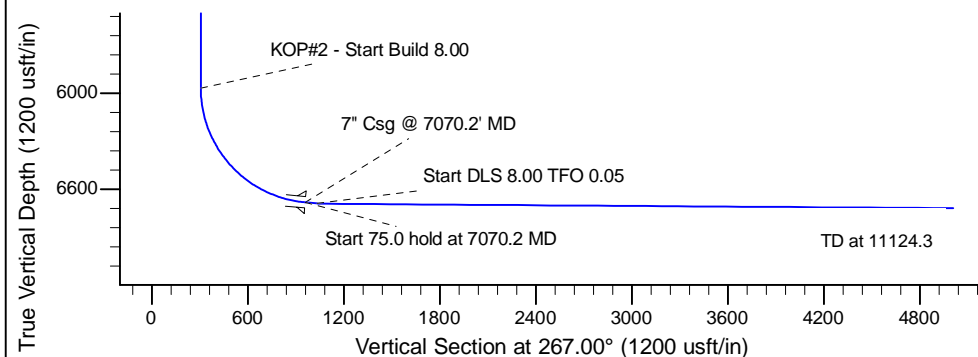
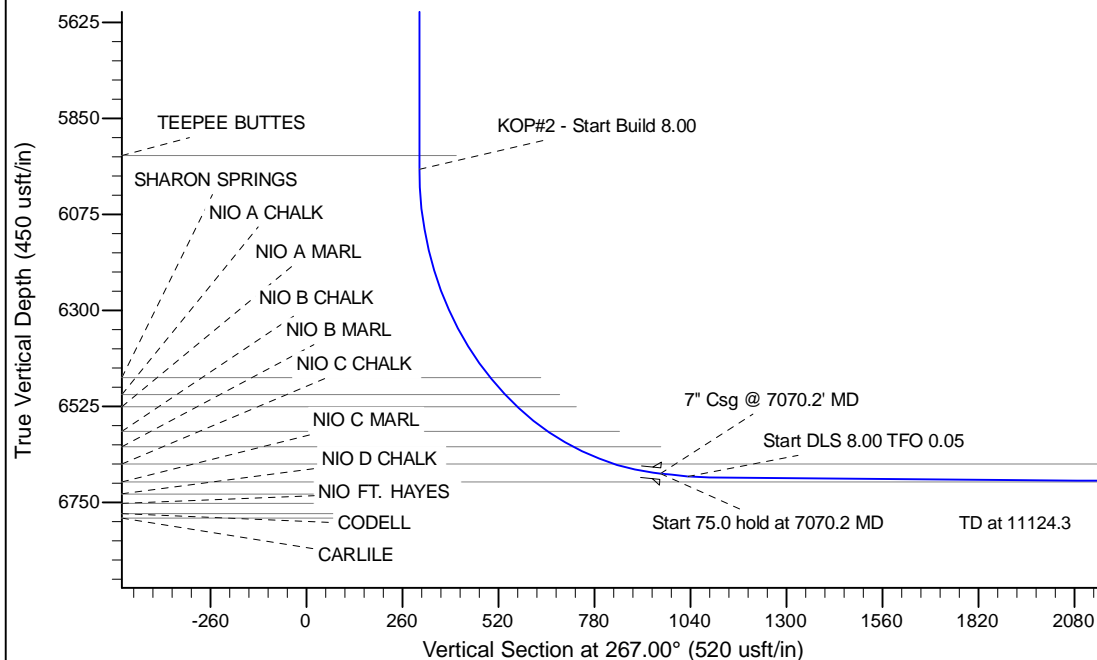
Project: Wattenberg Field
 Site: AA (Sec.24-T06N-R63W) Weld County, CO
 Well: Wells Ranch USX AA23-67HN
 Wellbore: Original Drilling
 Design: APD - Rev 0

Northern Region Drilling

Geodetic System: US State Plane 1983
 Datum: North American Datum 1983
 Ellipsoid: GRS 1980
 Zone: Colorado Northern Zone
 System Datum: Mean Sea Level

SECTION DETAILS

Sec	MD	Inc	Azi	TVD	+N/-S	+E/-W	Dleg	TFace	VSec	Target
1	0.0	0.00	0.00	0.0	0.0	0.0	0.00	0.00	0.0	
2	2200.0	0.00	0.00	2200.0	0.0	0.0	0.00	0.00	0.0	
3	2760.1	14.00	234.55	2754.5	-39.5	-55.5	2.50	234.55	57.5	
4	3693.8	14.00	234.55	3660.5	-170.5	-239.5	0.00	0.00	248.1	
5	4253.9	0.00	0.00	4215.0	-210.0	-295.0	2.50	180.00	305.6	
6	6007.7	0.00	0.00	5968.8	-210.0	-295.0	0.00	0.00	305.6	
7	7070.2	85.00	269.36	6682.3	-217.3	-948.7	8.00	269.36	958.8	
8	7145.2	85.00	269.36	6688.8	-218.1	-1023.4	0.00	0.00	1033.5	
9	7202.7	89.60	269.36	6691.6	-218.8	-1080.9	8.00	0.05	1090.8	
10	11124.3	89.60	269.36	6719.0	-262.3	-5002.1	0.00	0.00	5009.0	Wells Ranch USX AA23-67HN BHL 1320'FNL, 535'FWL



WELL DETAILS: Wells Ranch USX AA23-67HN			
Ground Level:	4793.0	Latitude	40.476240
Northing	1418254.76	Easting	3307786.55
Longitude	-104.393610		
Plan: APD - Rev 0 (Wells Ranch USX AA23-67HN/Original Drilling)			
Created By:	Carrie Willers	Date:	12:05, January 24 2013
Checked:		Date:	
Reviewed:		Date:	
Approved:		Date:	