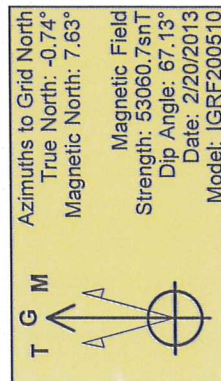
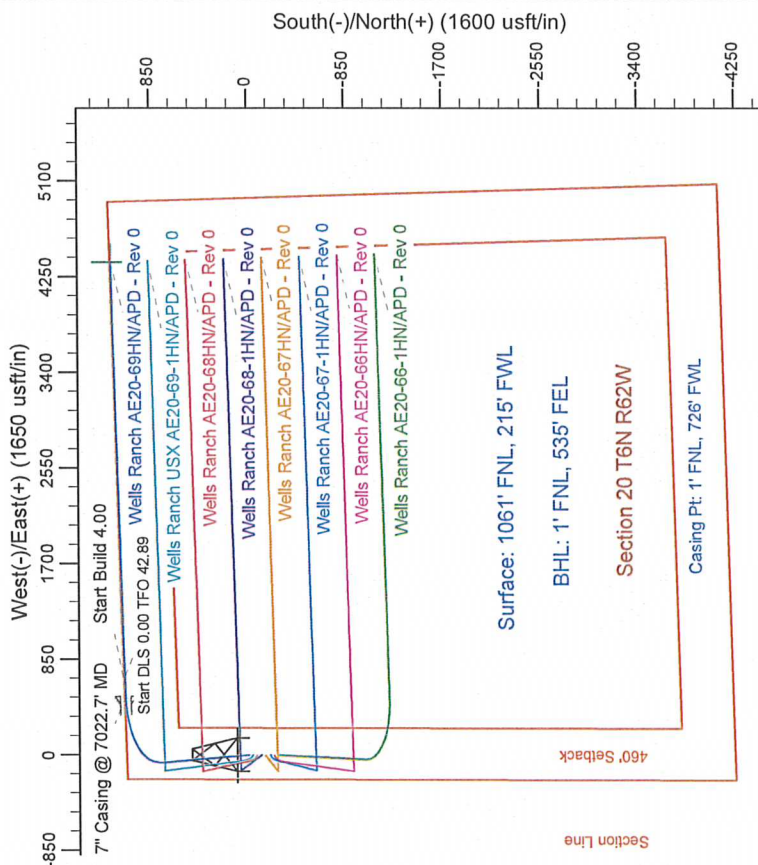
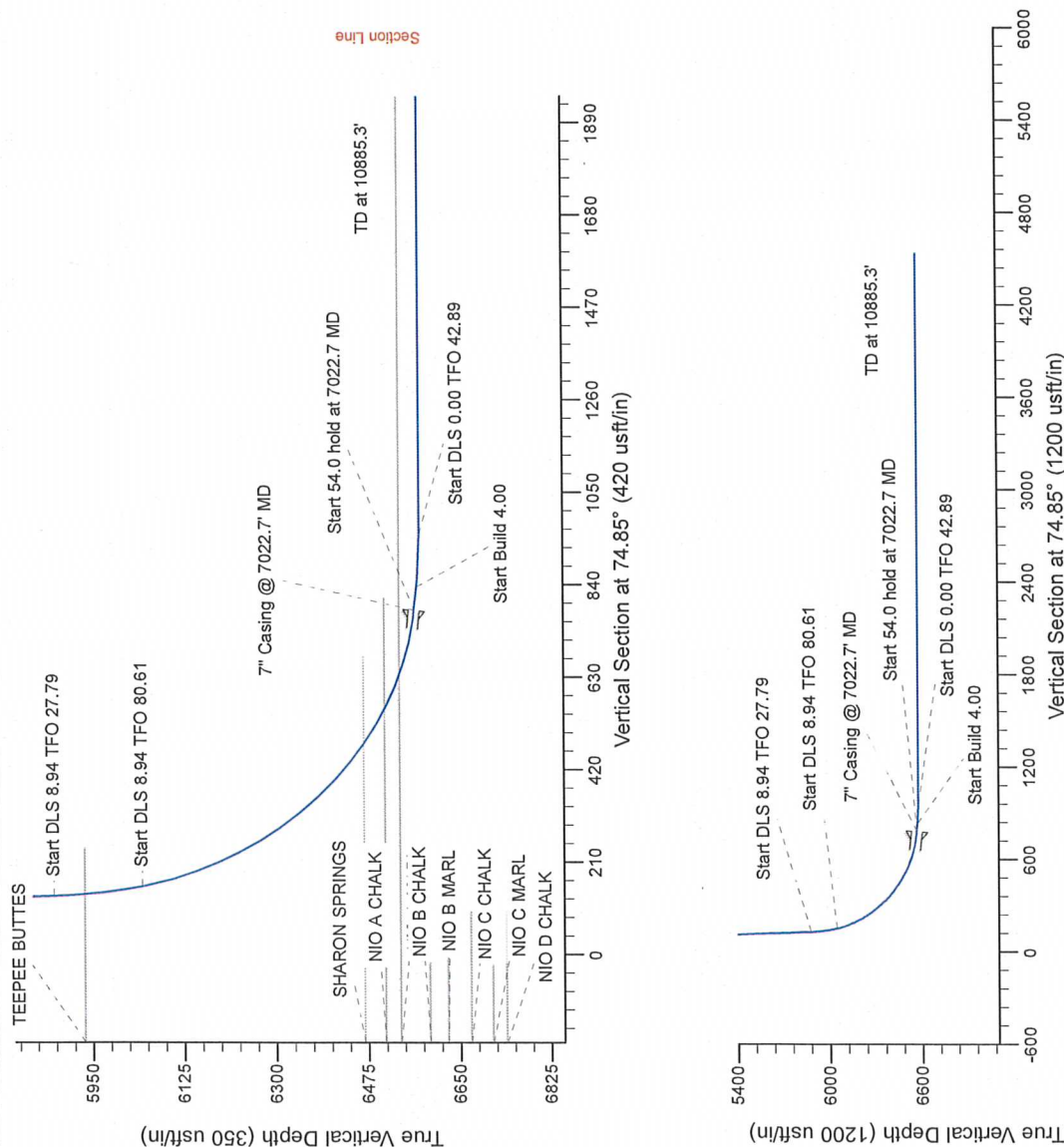


Geodetic System: US State Plane 1983
Datum: North American Datum 1983
Ellipsoid: GRS 1980
Zone: Colorado Northern Zone
System Datum: Mean Sea Level

Project: Wattenberg Field
Site: AE (Sec.20-T06N-R62W) Weld County, CO
Well: Wells Ranch AE20-69HN
Wellbore: Original Drilling
Design: APD - Rev 0

Sec	MD	Inc	Azi	TVD	+N+S	+E+W	Dleg	TFace	VSect	Target
1	0	0	0	0	0	0	0	0	0	
2	2000	0	0	2000	0	0	0	0	0	
3	2600	12	355	2595	62.4	-5	2.00	355	115	
4	5952	12	355	5875	796.8	-66.2	2.00	331.9	133.9	
5	7022	27.30	11.39	6044.4	816.3	53.0	9.00	27.79	159.9	
6	5132	85.00	88.30	6569.7	1072.6	53.0	8.94	80.61	782.2	
7	7076	65.00	89.30	6575.7	1077.3	53.0	9.00	80.61	834.5	
8	4067	60.00	89.30	6575.7	1077.3	53.0	9.00	80.61	834.5	
9	1295	60.00	89.30	6575.7	1077.3	53.0	9.00	80.61	834.5	
10	7076	65.00	89.30	6575.7	1077.3	53.0	9.00	80.61	834.5	
11	7076	65.00	89.30	6575.7	1077.3	53.0	9.00	80.61	834.5	
12	7076	65.00	89.30	6575.7	1077.3	53.0	9.00	80.61	834.5	
13	7076	65.00	89.30	6575.7	1077.3	53.0	9.00	80.61	834.5	
14	7076	65.00	89.30	6575.7	1077.3	53.0	9.00	80.61	834.5	
15	7076	65.00	89.30	6575.7	1077.3	53.0	9.00	80.61	834.5	
16	7076	65.00	89.30	6575.7	1077.3	53.0	9.00	80.61	834.5	
17	7076	65.00	89.30	6575.7	1077.3	53.0	9.00	80.61	834.5	
18	7076	65.00	89.30	6575.7	1077.3	53.0	9.00	80.61	834.5	
19	7076	65.00	89.30	6575.7	1077.3	53.0	9.00	80.61	834.5	
20	7076	65.00	89.30	6575.7	1077.3	53.0	9.00	80.61	834.5	
21	7076	65.00	89.30	6575.7	1077.3	53.0	9.00	80.61	834.5	
22	7076	65.00	89.30	6575.7	1077.3	53.0	9.00	80.61	834.5	
23	7076	65.00	89.30	6575.7	1077.3	53.0	9.00	80.61	834.5	
24	7076	65.00	89.30	6575.7	1077.3	53.0	9.00	80.61	834.5	
25	7076	65.00	89.30	6575.7	1077.3	53.0	9.00	80.61	834.5	
26	7076	65.00	89.30	6575.7	1077.3	53.0	9.00	80.61	834.5	
27	7076	65.00	89.30	6575.7	1077.3	53.0	9.00	80.61	834.5	
28	7076	65.00	89.30	6575.7	1077.3	53.0	9.00	80.61	834.5	
29	7076	65.00	89.30	6575.7	1077.3	53.0	9.00	80.61	834.5	
30	7076	65.00	89.30	6575.7	1077.3	53.0	9.00	80.61	834.5	
31	7076	65.00	89.30	6575.7	1077.3	53.0	9.00	80.61	834.5	
32	7076	65.00	89.30	6575.7	1077.3	53.0	9.00	80.61	834.5	
33	7076	65.00	89.30	6575.7	1077.3	53.0	9.00	80.61	834.5	
34	7076	65.00	89.30	6575.7	1077.3	53.0	9.00	80.61	834.5	
35	7076	65.00	89.30	6575.7	1077.3	53.0	9.00	80.61	834.5	
36	7076	65.00	89.30	6575.7	1077.3	53.0	9.00	80.61	834.5	
37	7076	65.00	89.30	6575.7	1077.3	53.0	9.00	80.61	834.5	
38	7076	65.00	89.30	6575.7	1077.3	53.0	9.00	80.61	834.5	
39	7076	65.00	89.30	6575.7	1077.3	53.0	9.00	80.61	834.5	
40	7076	65.00	89.30	6575.7	1077.3	53.0	9.00	80.61	834.5	
41	7076	65.00	89.30	6575.7	1077.3	53.0	9.00	80.61	834.5	
42	7076	65.00	89.30	6575.7	1077.3	53.0	9.00	80.61	834.5	
43	7076	65.00	89.30	6575.7	1077.3	53.0	9.00	80.61	834.5	
44	7076	65.00	89.30	6575.7	1077.3	53.0	9.00	80.61	834.5	
45	7076	65.00	89.30	6575.7	1077.3	53.0	9.00	80.61	834.5	
46	7076	65.00	89.30	6575.7	1077.3	53.0	9.00	80.61	834.5	
47	7076	65.00	89.30	6575.7	1077.3	53.0	9.00	80.61	834.5	
48	7076	65.00	89.30	6575.7	1077.3	53.0	9.00	80.61	834.5	
49	7076	65.00	89.30	6575.7	1077.3	53.0	9.00	80.61	834.5	
50	7076	65.00	89.30	6575.7	1077.3	53.0	9.00	80.61	834.5	
51	7076	65.00	89.30	6575.7	1077.3	53.0	9.00	80.61	834.5	
52	7076	65.00	89.30	6575.7	1077.3	53.0	9.00	80.61	834.5	
53	7076	65.00	89.30	6575.7	1077.3	53.0	9.00	80.61	834.5	
54	7076	65.00	89.30	6575.7	1077.3	53.0	9.00	80.61	834.5	
55	7076	65.00	89.30	6575.7	1077.3	53.0	9.00	80.61	834.5	
56	7076	65.00	89.30	6575.7	1077.3	53.0	9.00	80.61	834.5	
57	7076	65.00	89.30	6575.7	1077.3	53.0	9.00	80.61	834.5	
58	7076	65.00	89.30	6575.7	1077.3	53.0	9.00	80.61	834.5	
59	7076	65.00	89.30	6575.7	1077.3	53.0	9.00	80.61	834.5	
60	7076	65.00	89.30	6575.7	1077.3	53.0	9.00	80.61	834.5	
61	7076	65.00	89.30	6575.7	1077.3	53.0	9.00	80.61	834.5	
62	7076	65.00	89.30	6575.7	1077.3	53.0	9.00	80.61	834.5	
63	7076	65.00	89.30	6575.7	1077.3	53.0	9.00	80.61	834.5	
64	7076	65.00	89.30	6575.7	1077.3	53.0	9.00	80.61	834.5	
65	7076	65.00	89.30	6575.7	1077.3	53.0	9.00	80.61	834.5	
66	7076	65.00	89.30	6575.7	1077.3	53.0	9.00	80.61	834.5	
67	7076	65.00	89.30	6575.7	1077.3	53.0	9.00	80.61	834.5	
68	7076	65.00	89.30	6575.7	1077.3	53.0	9.00	80.61	834.5	
69	7076	65.00	89.30	6575.7	1077.3	53.0	9.00	80.61	834.5	
70	7076	65.00	89.30	6575.7	1077.3	53.0	9.00	80.61	834.5	
71	7076	65.00	89.30	6575.7	1077.3	53.0	9.00	80.61	834.5	
72	7076	65.00	89.30	6575.7	1077.3	53.0	9.00	80.61	834.5	
73	7076	65.00	89.30	6575.7	1077.3	53.0	9.00	80.61	834.5	
74	7076	65.00	89.30	6575.7	1077.3	53.0	9.00	80.61	834.5	
75	7076	65.00	89.30	6575.7	1077.3	53.0	9.00	80.61	834.5	
76	7076	65.00	89.30	6575.7	1077.3	53.0	9.00	80.61	834.5	
77	7076	65.00	89.30	6575.7	1077.3	53.0	9.00	80.61	834.5	
78	7076	65.00	89.30	6575.7	1077.3	53.0	9.00	80.61	834.5	
79	7076	65.00	89.30	6575.7	1077.3	53.0	9.00	80.61	834.5	
80	7076	65.00	89.30	6575.7	1077.3	53.0	9.00	80.61	834.5	
81	7076	65.00	89.30	6575.7	1077.3	53.0	9.00	80.61	834.5	
82	7076	65.00	89.30	6575.7	1077.3	53.0	9.00	80.61	834.5	
83	7076	65.00	89.30	6575.7	1077.3	53.0	9.00	80.61	834.5	
84	7076	65.00	89.30	6575.7	1077.3	53.0	9.00	80.61	834.5	
85	7076	65.00	89.30	6575.7	1077.3	53.0	9.00	80.61	834.5	
86	7076	65.00	89.30	6575.7	1077.3	53.0	9.00	80.61	834.5	
87	7076	65.00	89.30	6575.7	1077.3	53.0	9.00	80.61	834.5	
88	7076	65.00	89.30	6575.7	1077.3	53.0	9.00	80.61	834.5	
89	7076	65.00	89.30	6575.7	1077.3	53.0	9.00	80.61	834.5	
90	7076	65.00	89.30	6575.7	1077.3	53.0	9.00	80.61	834.5	
91	7076	65.00	89.30	6575.7	1077.3	53.0	9.00	80.61	834.5	
92	7076	65.00	89.30	6575.7	1077.3	53.0	9.00	80.61	834.5	
93	7076	65.00	89.30	6575.7	1077.3	53.0	9.00	80.61	834.5	
94	7076	65.00	89.30	6575.7	1077.3	53.0	9.00	80.61	834.5	
95	7076	65.00	89.30	6575.7	1077.3	53.0	9.00	80.61	834.5	
96	7076	65.00	89.30	6575.7	1077.3	53.0	9.00	80.61	834.5	
97	7076	65.00	89.30	6575.7	1077.3	53.0	9.00	80.61	834.5	
98	7076	65.00	89.30	6575.7	1077.3	53.0	9.00	80.61	834.5	
99	7076	65.00	89.30	6575.7	1077.3	53.0	9.00	80.61	834.5	
100	7076	65.00	89.30	6575.7	1077.3	53.0	9.00	80.61	834.5	
101	7076	65.00	89.30	6575.7	1077.3	53.0	9.00	80.61	834.5	
102	7076	65.00	89.30	6575.7	1077.3	53.0	9.00	80.61	834.5	
103	7076	65.00	89.30	6575.7	1077.3	53.0	9.00	80.61	834.5	
104	7076	65.00	89.30	6575.7	1077.3	53.0	9.00	80.61	834.5	
105	7076	65.00	89.30	6575.7	1077.3	53.0	9.00	80.61	834.5	
106	7076	65.00	89.30	6575.7	1077.3	53.0	9.00	80.61	834.5	
107	7076	65.00	89.30	6575.7	1077.3	53.0	9.00	80.61	834.5	
108	7076	65.00	89.30	6575.7	1077.3	53.0	9.00	80.61	834.5	
109	7076	65.00	89.30	6575.7	1077.3	53.0	9.00	80.61	834.5	
110	7076	65.00	89.30	6575.7	1077.3	53.0	9.00	80.61	834.5	
111	7076	65.00	89.30	6575.7	1077.3	53.0	9.00	80.61	834.5	
112	7076	65.00	89.30	6575.7	1077.3	53.0	9.00	80.61	834.5	
113	7076	65.00	89.30	6575.7	1077.3	53.0	9.00	80.61	834.5	
114	7076	65.00	89.30	6575.7	1077.3	53.0	9.00	80.61	834.5	
115	7076	65.00	89.30	6575.7	1077.3	53.0	9.00	80.61	834.5	
116	7076	65.00	89.30	6575.7	1077.3	53.0	9.00	80.61	834.5	
117	7076	65.00	89.30	6575.7	1077.3	53.0	9.00	80.61	834.5	
118	7076	65.00	89.30	6575.7	1077.3	53.0	9.00	80.61	834.5	
119	7076	65.00	89.30	6575.7	1077.3	53.0	9.00	80.61	834.5	
120										



WELL DETAILS: Wells Ranch AE20-69HN			
Northings	Ground Level	Longitude	
1418525.21	Easting	Latitude	
	3318472.28	40.476610	-104.355190
Plan: APD - Rev 0 (Wells Ranch AE20-69HNOriginal Drilling)			
Created By: Carrie Willers	Date: 18:08, March 01 2013		
Checked: _____	Date: _____		
Reviewed: _____	Date: _____		
Approved: _____	Date: _____		