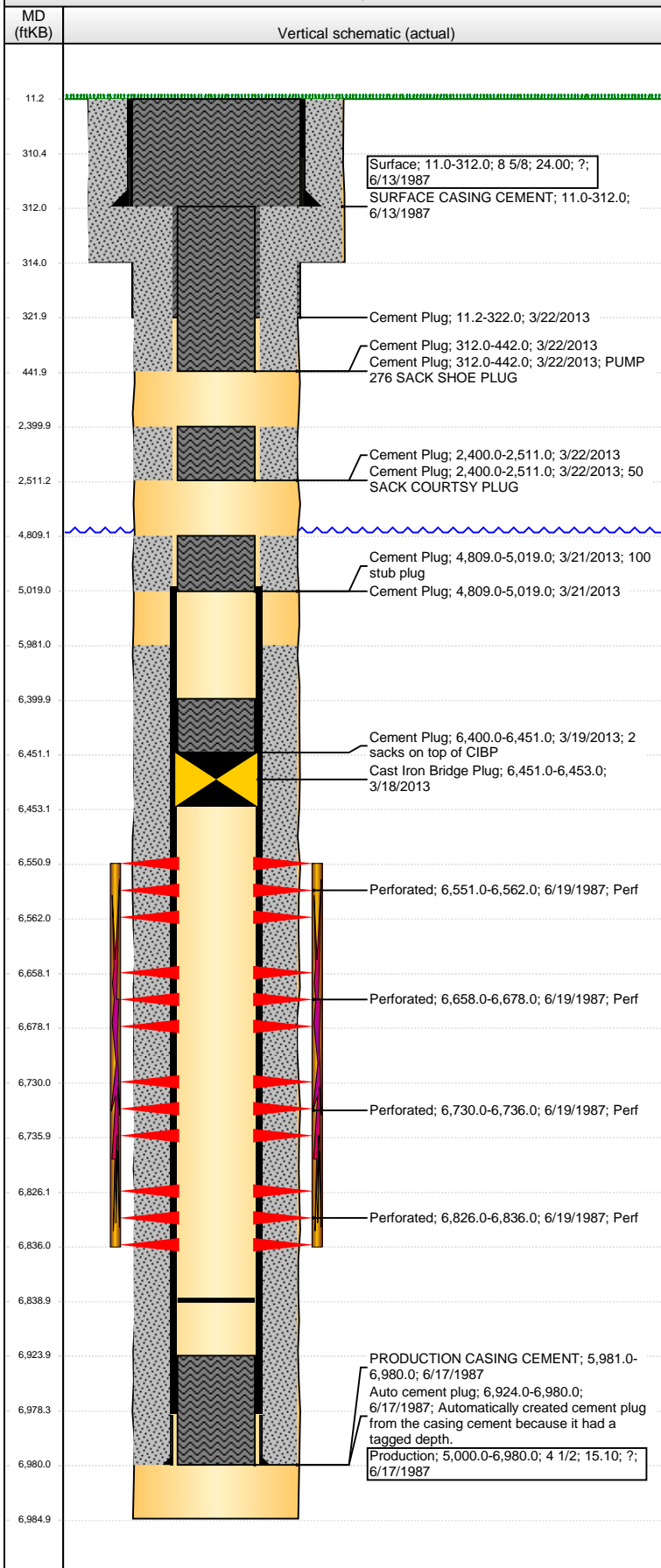


**Well Name: PETRIKIN A34-16**

VERTICAL - ORIGINAL HOLE, 3/28/2013 2:40:27 PM



## Well Header

API	Business Unit	District	Well Config
05-123-13478	WATTENBERG	15	VERTICAL
Original KB Elevation (ft)	KB - GL / MSL (ftKB)	Spud Date	P & A Date
4,670.00	11.00	6/13/1987	3/25/2013

Comment

Directions To Well

## Congressional Location

Quarter 1	Quarter 2	Quarter 3	Quarter 4	Section	Township	Twnshp N...	Range	Rng E/W Dir
		SE	SE	34	6	N	64	W

## Bottom Hole Location

North-South Distance (ft)	From N or S Line	East-West Distance (ft)	From E or W Line

## Plug Back Total Depths

Date	Depth (ftKB)	Method	Com
6/19/1987	6,924.0	CASED HOLE LOG	DEPTH LOGGER ON CBL
9/2/1999	6,839.0	TAG	TAG UP

## Wellbore Sections

Section Des	Size (in)	Act Top (ftKB)	Act Btm (ftKB)
SURFACE	12 1/4	11.0	314.0
PRODUCTION	7 7/8	314.0	6,985.0

## Zone Statuses

Zone Name	Status Date	Status	Job
CODELL	7/14/1987	PR	DRILLING/COMPLETION - ORIGINAL, 6/13/1987 00:00
CODELL	3/19/2013	AB	ABANDON WELL, 3/18/2013 12:00
NIOBRARA	7/14/1987	PR	DRILLING/COMPLETION - ORIGINAL, 6/13/1987 00:00
NIOBRARA	3/19/2013	AB	ABANDON WELL, 3/18/2013 12:00

## Casing Strings

### Surface, 312.0ftKB

Casing Description	Run Date	OD (in)	Wt/Len (l...)	Grade	Top (ftKB)	MD (ftKB)
Surface	6/13/1987	8 5/8	24.00	?	11.0	312.0

### Production, 6,980.0ftKB

Casing Description	Run Date	OD (in)	Wt/Len (l...)	Grade	Top (ftKB)	MD (ftKB)
Production	6/17/1987	4 1/2	15.10	?	11.0	6,980.0

## Cement

Description	Top Depth (ftKB)	Bottom Depth (ftKB)
SURFACE CASING CEMENT	11.0	312.0
Description	Top Depth (ftKB)	Bottom Depth (ftKB)
PRODUCTION CASING CEMENT	5,981.0	6,980.0
Description	Top Depth (ftKB)	Bottom Depth (ftKB)
Cement Plug	6,400.0	6,451.0
Description	Top Depth (ftKB)	Bottom Depth (ftKB)
Cement Plug	4,809.0	5,019.0
Description	Top Depth (ftKB)	Bottom Depth (ftKB)
Cement Plug	4,809.0	5,019.0
Description	Top Depth (ftKB)	Bottom Depth (ftKB)
Cement Plug	2,400.0	2,511.0
Description	Top Depth (ftKB)	Bottom Depth (ftKB)
Cement Plug	312.0	442.0
Description	Top Depth (ftKB)	Bottom Depth (ftKB)
Cement Plug	2,400.0	2,511.0
Description	Top Depth (ftKB)	Bottom Depth (ftKB)
Cement Plug	312.0	442.0
Description	Top Depth (ftKB)	Bottom Depth (ftKB)
Cement Plug	11.2	322.0

## Tubing Components

Item Des	OD (in)	Wt (lb/ft)	Grade	Jts	Len (ft)	Btm (ftKB)	Btm (TVD) (ftKB)

## Perforation Data

Zone	Bnch/St g	Entered Shot Total	Top (ftKB)	Btm (ftKB)	Date
NIOBRARA, ORIGINAL HOLE	A	3	6,551.00	6,562.00	6/19/1987
NIOBRARA, ORIGINAL HOLE	B	5	6,658.00	6,678.00	6/19/1987
NIOBRARA, ORIGINAL HOLE	C	2	6,730.00	6,736.00	6/19/1987
CODELL, ORIGINAL HOLE		5	6,826.00	6,836.00	6/19/1987

**Well Name: PETRIKIN A34-16**

VERTICAL - ORIGINAL HOLE, 3/28/2013 2:40:28 PM

## Stimulations & Treatments

Date 6/20/1987	Zone NIOBRARA-CODELL, ORIGINAL HOLE	Primary Job Type DRILLING/COMPLETION - ORIGINAL
Technical Result	Tech Result Details	Tech Result Note

Comment  
LIMITED ENTRY

## Other In Hole

Run Date	Des	OD (in)	Top (ftKB)	Btm (ftKB)
3/18/2013	Cast Iron Bridge Plug	3.99	6,451.0	6,453.0

## Logs

Date	Type	Top (ftKB)	Btm (ftKB)
6/16/1987	COMPENSATED DENSITY	3,500.0	6,982.0
6/16/1987	INDUCTION	315.0	6,978.0
6/19/1987	CBL/CCL/GR	6,000.0	6,916.0
6/19/1987	PERFORATION	6,700.0	6,800.0
2/6/2013	GYRO	11.0	6,800.0

