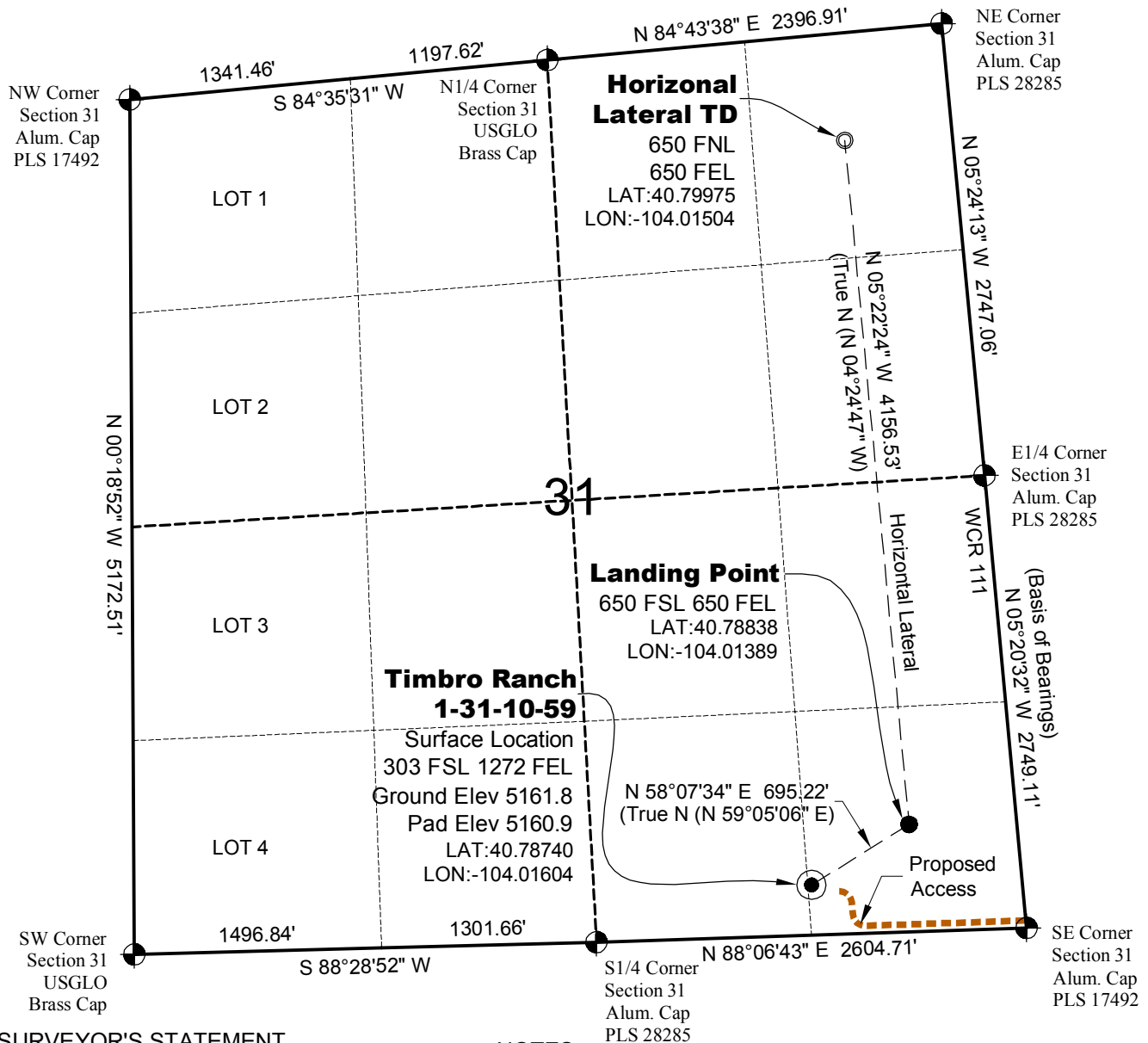


WELL LOCATION MAP

**TIMBRO RANCH
1-31-10-59 PAD**



SURVEYOR'S STATEMENT

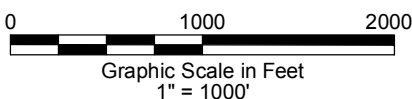
The undersigned hereby states that the well location shown hereon was staked on the ground based on existing monumentation and/or physical evidence found in the field and is correct to the best of my knowledge, information and belief.

NOTES

- 1.) Horizontal (NAD 83) and vertical (NAVD 88) datum is based on the Leica Geosystems SmartNet of Colorado.
- 2.) All directions, distances, and dimensions shown hereon are based on coordinates from the "Colorado coordinate system of 1983 north zone" (article 52 of title 38, C.R.S.).
- 3.) All section line dimensions shown hereon are based on field measurements of existing monuments and/or physical evidence found in the field unless otherwise indicated.
- 4.) Physical features shown hereon are for graphical representation only.
- 5.) See Form 2A for visible improvements within 400' of wellhead.
- 6.) Distances to nearest section lines are measured perpendicularly.
- 7.) This is not a land survey nor land survey plat.
- 8.) Date of Survey 3/6/13; Date of Drawing 3/14/13. REV 0
PDOP Reading: 1.9 Instrument Operator: Marc Woodard



North



**CARRIZO NIOBRARA LLC
TIMBRO RANCH 1-31-10-59**

**SL SE1/4 SE1/4 SEC.31 T10N R59W
HL TD NE1/4 NE1/4 SEC.31 T10N R59W
6th PM WELD COUNTY COLORADO**