
WPX ENERGY ROCKY MOUNTAIN LLC-EBUS

**PA 444-2
PARACHUTE
Garfield County , Colorado**

Cement Surface Casing
20-Dec-2012

Post Job Report

HALLIBURTON

Cementing Job Log

The Road to Excellence Starts with Safety

Sold To #: 300721		Ship To #: 2966369		Quote #:		Sales Order #: 900033902	
Customer: WPX ENERGY ROCKY MOUNTAIN LLC-EBUS				Customer Rep: Hudson, Matt			
Well Name: PA			Well #: 444-2		API/UWI #: 05-045-20900		
Field: PARACHUTE		City (SAP): PARACHUTE		County/Parish: Garfield		State: Colorado	
Legal Description:							
Lat: N 39.466 deg. OR N 39 deg. 27 min. 57.244 secs.				Long: W 107.954 deg. OR W -108 deg. 2 min. 45.308 secs.			
Contractor: NABORS 574			Rig/Platform Name/Num: NABORS 574				
Job Purpose: Cement Surface Casing						Ticket Amount:	
Well Type: Development Well			Job Type: Cement Surface Casing				
Sales Person: MAYO, MARK			Srv Supervisor: ANGLESTEIN, TROY			MBU ID Emp #: 436099	

Activity Description	Date/Time	Cht #	Rate bbl/ min	Volume bbl		Pressure psig		Comments
				Stage	Total	Tubing	Casing	
Call Out	12/20/2012 15:00							
Pre-Convoy Safety Meeting	12/20/2012 17:30							ALL HES EMPLOYEES
Arrive At Loc	12/20/2012 19:10							RIG STILL RUNNING CASING CIRCULATED FOR 1 HOUR
Assessment Of Location Safety Meeting	12/20/2012 19:20							ALL HES EMPLOYEES
Rig-Up Equipment	12/20/2012 19:30							1 HT 400 PUMP TRUCK, 1 660 BULK TRUCK, 1 9.625 QUICK LATCH PLUG CONTAINER, 1 F 550 P/U
Pre-Job Safety Meeting	12/20/2012 20:50							ALL HES EMPLOYEES, RIG CREW, CO REP.
Start Job	12/20/2012 22:16							9.625 CASING SET AT 1040', FC 993', TD: 1060', OPEN HOLE 13.5", MUD WT 9.5 PPG, 800 BBLS OF H2O ON LOCATION, WATER SAMPLE SUBMITTED.
Pump Water	12/20/2012 22:16		2	2			63.0	FILL LINES
Pressure Test	12/20/2012 22:18		0.5	0.5		3529. 0		NO LEAKS
Pump Spacer 1	12/20/2012 22:23		4	20			124.0	FRESH WATER
Activity Description	Date/Time	Cht #	Rate bbl/ min	Volume bbl		Pressure psig		Comments
				Stage	Total	Tubing	Casing	

Sold To #: 300721

Ship To #: 2966369

Quote #:

Sales Order #: 900033902

SUMMIT Version: 7.2.27

Friday, December 21, 2012 12:02:00

HALLIBURTON

Cementing Job Log

Pump Lead Cement	12/20/2012 22:35		8	63.6			353.0	150 SKS VERSACEM CMT TO BE MIXED AT 12.3 PPG, 2.38 YIELD, 13.75 GAL/SK, CMT TO BE WEIGHED VIA PRESSURE BALANCED MUD SCALES WET AND DRY SAMPLES SUBMITTED
Pump Tail Cement	12/20/2012 22:46		8	60.1			368.0	160 SKS VERSACEM CMT TO BE MIXED AT 12.8 PPG, 2.11 YIELD, 11.75 GAL/SK, CMT TO BE WEIGHED VIA PRESSURE BALANCED MUD SCALES. WET AND DRY SAMPLES SUBMITTED.
Shutdown	12/20/2012 22:54							FOR NO MORE THEN 5 MINUTES.
Drop Plug	12/20/2012 22:59							PLUG LAUNCHED
Pump Displacement	12/20/2012 22:59		10	78.2			565.0	FRESHWATER
Cement Returns to Surface	12/20/2012 23:06		10	50			530.0	28 BBLS OF CEMENT TO SURFACE.
Slow Rate	12/20/2012 23:08		2	68			253.0	10 BBLS PRIOR TO CALCULATED DISPLACEMENT
Bump Plug	12/20/2012 23:12		2	78.2			255.0	PLUG LANDED AT 904 HELD FOR TWO MINUTES
Check Floats	12/20/2012 23:15							FLOATS HOLDING, NO ANNULAR FLOW NOTED
End Job	12/20/2012 23:15							THANK YOU FOR USING HES FROM TROY ANGLESTEIN AND CREW.
Post-Job Safety Meeting (Pre Rig-Down)	12/20/2012 23:20							ALL HES EMPLOYEES
Rig-Down Equipment	12/21/2012 00:00							SAFELY
Pre-Convoy Safety Meeting	12/21/2012 00:20							ALL HES EMPLOYEES
Crew Leave Location	12/21/2012 00:30							SITE WAS AS CLEAN AS WHEN WE ARRIVED

Sold To # : 300721

Ship To # :2966369

Quote # :

Sales Order # : 900033902

SUMMIT Version: 7.2.27

Friday, December 21, 2012 12:02:00

HALLIBURTON

Cementing Job Summary

The Road to Excellence Starts with Safety

Sold To #: 300721	Ship To #: 2966369	Quote #:	Sales Order #: 900033902
Customer: WPX ENERGY ROCKY MOUNTAIN LLC-EBUS	Customer Rep: Hudson, Matt		
Well Name: PA	Well #: 444-2	API/UWI #: 05-045-20900	
Field: PARACHUTE	City (SAP): PARACHUTE	County/Parish: Garfield	State: Colorado
Lat: N 39.466 deg. OR N 39 deg. 27 min. 57.244 secs.	Long: W 107.954 deg. OR W -108 deg. 2 min. 45.308 secs.		
Contractor: NABORS 574	Rig/Platform Name/Num: NABORS 574		
Job Purpose: Cement Surface Casing			
Well Type: Development Well	Job Type: Cement Surface Casing		
Sales Person: MAYO, MARK	Srv Supervisor: ANGLESTEIN, TROY	MBU ID Emp #: 436099	

Job Personnel

HES Emp Name	Exp Hrs	Emp #	HES Emp Name	Exp Hrs	Emp #	HES Emp Name	Exp Hrs	Emp #
ANGLESTEIN, TROY Edward WM	5.5	436099	GOWEN, WESLEY M	5.5	496205	ROSE, BENJAMIN Keith	5.5	487022

Equipment

HES Unit #	Distance-1 way	HES Unit #	Distance-1 way	HES Unit #	Distance-1 way	HES Unit #	Distance-1 way
10616651C	60 mile	10867531	60 mile	10989685	60 mile	11583931	60 mile
11808827	60 mile						

Job Hours

Date	On Location Hours	Operating Hours	Date	On Location Hours	Operating Hours	Date	On Location Hours	Operating Hours
12/20/2012	5	1	12/21/2012	.5	0			

TOTAL Total is the sum of each column separately

Job				Job Times			
Formation Name				Date	Time	Time Zone	
Formation Depth (MD)	Top	Bottom		Called Out	20 - Dec - 2012	15:00	MST
Form Type		BHST		On Location	20 - Dec - 2012	19:10	MST
Job depth MD	1060. ft	Job Depth TVD	1060. ft	Job Started	20 - Dec - 2012	00:00	MST
Water Depth		Wk Ht Above Floor	4. ft	Job Completed	20 - Dec - 2012	00:00	MST
Perforation Depth (MD)	From	To		Departed Loc	20 - Dec - 2012	00:00	MST

Well Data

Description	New / Used	Max pressure psig	Size in	ID in	Weight lbm/ft	Thread	Grade	Top MD ft	Bottom MD ft	Top TVD ft	Bottom TVD ft
OPEN HOLE SECTION				13.5					1060.		
SURFACE CASING	Unknown		9.625	9.001	32.3				1040.		

Sales/Rental/3rd Party (HES)

Description	Qty	Qty uom	Depth	Supplier
PLUG,CMTG, TOP, 9 5/8, HWE, 8.16 MIN/9.06 MA	1	EA		

Tools and Accessories

Type	Size	Qty	Make	Depth	Type	Size	Qty	Make	Depth	Type	Size	Qty	Make
Guide Shoe					Packer					Top Plug	9.625	1	HES
Float Shoe					Bridge Plug					Bottom Plug			
Float Collar					Retainer					SSR plug set			
Insert Float										Plug Container	9.625	1	HES
Stage Tool										Centralizers			

Miscellaneous Materials


Gelling Agt	Conc	Surfactant	Conc	Acid Type	Qty	Conc	%
Treatment Fld	Conc	Inhibitor	Conc	Sand Type	Size	Qty	

Fluid Data

Stage/Plug #: 1

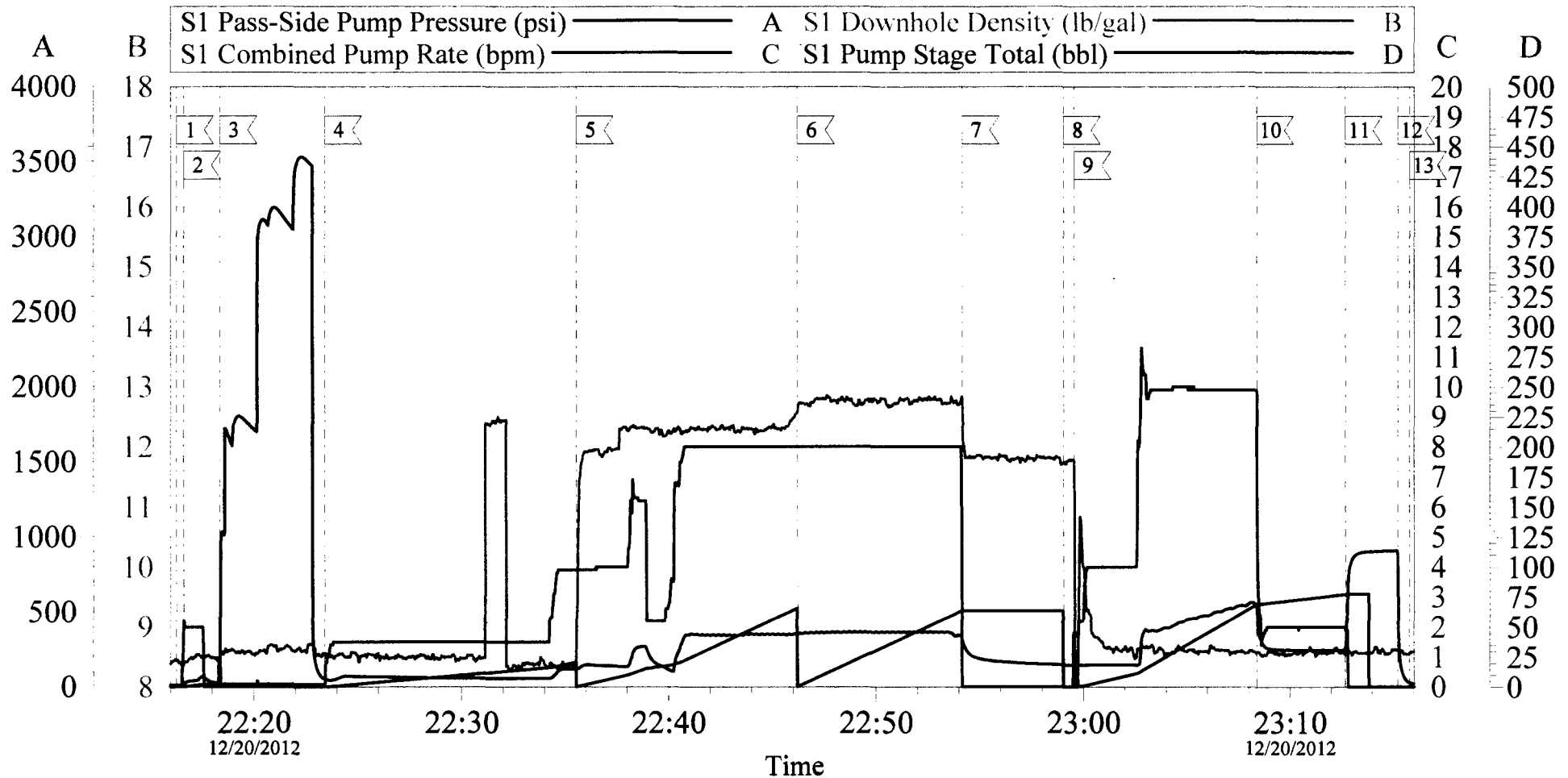
HALLIBURTON

Cementing Job Summary

Fluid #	Stage Type	Fluid Name	Qty	Qty uom	Mixing Density lbm/gal	Yield ft ³ /sk	Mix Fluid Gal/sk	Rate bbl/min	Total Mix Fluid Gal/sk
1	Water Spacer		20.00	bbl	8.33	.0	.0	4	
2	Lead Cement	VERSACEM (TM) SYSTEM (452010)	150.0	sacks	12.3	2.38	13.75	8	13.75
3	Tail Cement	VERSACEM (TM) SYSTEM (452010)	160.0	sacks	12.8	2.11	11.75	8	11.75
4	Displacement		78.20	bbl	8.33	.0	.0	10	
Calculated Values			Pressures			Volumes			
Displacement	78.2	Shut In: Instant		Lost Returns	0	Cement Slurry	123.7	Pad	
Top Of Cement	SURFACE	5 Min		Cement Returns	28	Actual Displacement	78.2	Treatment	
Frac Gradient		15 Min		Spacers	20	Load and Breakdown		Total Job	221.9
Rates									
Circulating	15	Mixing		8	Displacement	10	Avg. Job		8
Cement Left In Pipe	Amount	47 ft	Reason	Shoe Joint					
Frac Ring # 1 @	ID	Frac ring # 2 @	ID	Frac Ring # 3 @	ID	Frac Ring # 4 @	ID		
The Information Stated Herein Is Correct				Customer Representative Signature 					

WPX ENERGY - PA 444-2

SURFACE



Local Event Log

1 START JOB	22:16:17	2 FILL LINES	22:16:37	3 TEST LINES	22:18:23
4 PUMP H2O SPACER	22:23:26	5 PUMP LEAD CEMENT	22:35:34	6 PUMP TAIL CEMENT	22:46:13
7 SHUTDOWN	22:54:09	8 DROP PLUG	22:59:02	9 PUMP DISPLACEMENT	22:59:33
10 SLOW RATE	23:08:23	11 BUMP PLUG	23:12:42	12 CHECK FLOATS	23:15:15
13 END JOB	23:15:49				

Customer: WPX ENRGY
Well Description: PA 444-2
Company Rep: MATT HUTSON

Job Date: 20-Dec-2012
Job Type: SURFACE
Cement Supervisor: TROY ANGLESTEIN

Sales Order #: 900033902
ADC Used: YES
Elite # 4: WESLEY GOWEN

OptiCem v6.4.10
20-Dec-12 23:49

Sales Order #: 900033902	Line Item: 10	Survey Conducted Date: 12/21/2012
Customer: WPX ENERGY ROCKY MOUNTAIN LLC-EBUS		Job Type (BOM): CMT SURFACE CASING BOM
Customer Representative: MATT HUTSON		API / UWI: (leave blank if unknown) 05-045-20900
Well Name: PA		Well Number: 444-2
Well Type: Development Well	Well Country: United States of America	
H2S Present: No	Well State: Colorado	Well County: Garfield

Dear Customer.

We hope that you were satisfied with the service quality of this job performed by Halliburton. It is the aim of our management and service personnel to deliver equipment and service of a standard unmatched in the service sector of the energy industry.

Please take the time to let us know if our performance met with your satisfaction. Please be as critical as possible to ensure we constantly improve our service. Your comments are of great value to us and are intended for the exclusive use of Halliburton.

CUSTOMER SATISFACTION SURVEY

CATEGORY	CUSTOMER SATISFACTION RESPONSE	
Survey Conducted Date	The date the survey was conducted	12/21/2012
Survey Interviewer	The survey interviewer is the person who initiated the survey.	TROY ANGLESTEIN (HX45574)
Customer Participation	Did the customer participate in this survey? (Y/N)	Yes
Customer Representative	Enter the Customer representative name	MATT HUTSON
HSE	Was our HSE performance satisfactory? Circle Y or N	Yes
Equipment	Were you satisfied with our Equipment? Circle Y or N	Yes
Personnel	Were you satisfied with our people? Circle Y or N	Yes
Customer Comment	Customer's Comment	GOOD JOB THANKS

CUSTOMER SIGNATURE

HALLIBURTON

CUSTOMER SURVEY

Sales Order #: 900033902	Line Item: 10	Survey Conducted Date: 12/21/2012
Customer: WPX ENERGY ROCKY MOUNTAIN LLC-EBUS		Job Type (BOM): CMT SURFACE CASING BOM
Customer Representative: MATT HUTSON		API / UWI: (leave blank if unknown) 05-045-20900
Well Name: PA		Well Number: 444-2
Well Type: Development Well	Well Country: United States of America	
H2S Present: No	Well State: Colorado	Well County: Garfield

KEY PERFORMANCE INDICATORS

General	
Survey Conducted Date The date the survey was conducted	12/21/2012

Cementing KPI Survey	
Type of Job Select the type of job. (Cementing or Non-Cementing)	0
Select the Maximum Deviation range for this Job What is the highest deviation for the job you just completed? This may not be the maximum well deviation.	Vertical
Total Operating Time (hours) Total Operating Hours Including Rig-up, Pumping, Rig-down. Enter in decimal format.	2
HSE Incident, Accident, Injury HSE Incident, Accident, Injury. This should be recordable incidents only.	No
Was the job purpose achieved? Was the job delivered correctly as per customer agreed design?	Yes
Operating Hours (Pumping Hours) Total number of hours pumping fluid on this job. Enter in decimal format.	1
Customer Non-Productive Rig Time (hrs) Lost time due to Halliburton in the start, execution, or completion of an ordered service or product, or delays in a follow-on service. Enter in decimal format. 0 if none.	0
Type of Rig Classification Job Was Performed Type Of Rig (classification) Job Was Performed On	Drilling Rig (Portable)
Number Of JSAs Performed Number Of Jsas Performed	5
Number of Unplanned Shutdowns Unplanned shutdown is when injection stops for any period of time.	0
Was this a Primary Cement Job (Yes / No)	Yes

HALLIBURTON

CUSTOMER SURVEY

Sales Order #: 900033902	Line Item: 10	Survey Conducted Date: 12/21/2012
Customer: WPX ENERGY ROCKY MOUNTAIN LLC-EBUS		Job Type (BOM): CMT SURFACE CASING BOM
Customer Representative: MATT HUTSON		API / UWI: (leave blank if unknown) 05-045-20900
Well Name: PA		Well Number: 444-2
Well Type: Development Well	Well Country: United States of America	
H2S Present: No	Well State: Colorado	Well County: Garfield

Primary Cement Job= Casing job, Liner job, or Tie-back job.	
Did We Run Wiper Plugs?	Top
Did We Run Top And Bottom Casing Wiper Plugs?	
Mixing Density of Job Stayed in Designed Density Range (0-100%)	98
Density Range defined as +/- .20 ppg. Calculation: Total BBLs cement mixed at designed density divided by total BBLs of cement multiplied by 100	
Was Automated Density Control Used?	Yes
Was Automated Density Control (ADC) Used ?	
Pump Rate (percent) of Job Stayed At Designed Pump Rate	97
Pump Rate range defined as +/- 1bbl/min. Calculation: Total BBLs of fluid pumped at the designed rate divided by Total BBLs of fluid pumped, multiplied by 100	
Nbr of Remedial Sqz Jobs Rqd - Competition	0
Number Of Remedial Squeeze Jobs Required After Primary Job Performed By Competition	
Nbr of Remedial Plug Jobs Rqd - HES	0
Number Of Remedial Plug Jobs Needed After Primary Plug Pumped By HES	
Nbr of Remedial Sqz Jobs Rqd - HES	0
Number Of Remedial Squeeze Jobs Required After Primary Job Performed By HES	