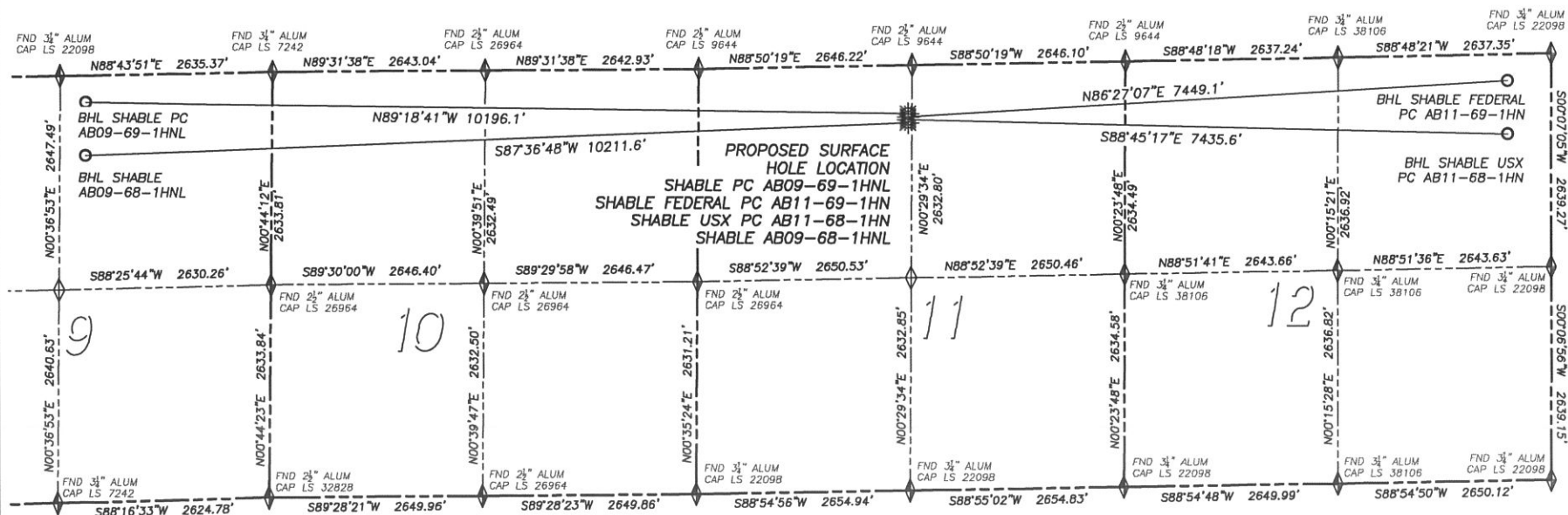


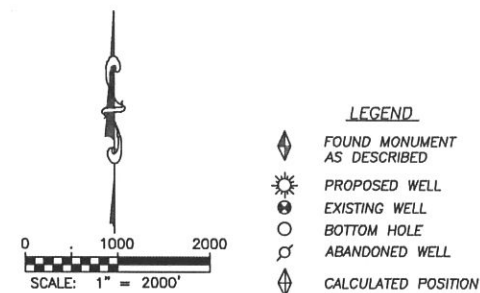
# MULTI-WELL PAD DIRECTIONAL LAYOUT

## SHABLE PC AB09-69-1HNL, SHABLE FEDERAL PC AB11-69-1HN, SHABLE USX PC AB11-68-1HN & SHABLE AB09-68-1HNL

SECTION 11, TOWNSHIP 7 NORTH, RANGE 64 WEST OF THE 6TH PRINCIPAL MERIDIAN



	Well Name	Qtr - Qtr	Footage		Latitude	Longitude	Elevation	PDOP
SHL	SHABLE PC AB09-69-1HNL	NE NW 11	600' FNL	2600' FWL	40.59329	-104.51642	4885	1.6
BHL	SHABLE PC AB09-69-1HNL	NW NE 9	330' FNL	2310' FEL	40.59393	-104.55312		
SHL	SHABLE FEDERAL PC AB11-69-1HN	NE NW 11	637' FNL	2600' FWL	40.59319	-104.51643	4885	1.6
BHL	SHABLE FEDERAL PC AB11-69-1HN	NE NE 12	330' FNL	535' FEL	40.59423	-104.48965		
SHL	SHABLE USX PC AB11-68-1HN	NE NW 11	675' FNL	2600' FWL	40.59309	-104.51643	4884	1.6
BHL	SHABLE USX PC AB11-68-1HN	NE NE 12	990' FNL	535' FEL	40.59241	-104.48968		
SHL	SHABLE AB09-68-1HNL	NE NW 11	713' FNL	2600' FWL	40.59298	-104.51643	4883	1.7
BHL	SHABLE AB09-68-1HNL	NW NE 9	990' FNL	2310' FEL	40.59212	-104.55318		



NOTICE: According to Colorado law you MUST commence any legal action based upon any defect in this W.L.C. within three years after you first discover such defect. In no event may any action based upon any such defect in this W.L.C. be commenced more than ten years from the date of the certification shown herein.

DALEY LAND SURVEYING, INC.

PARKER, CO. 80134

303 953 9841

## MULTI-WELL PAD LOCATION DRAWING

SHABLE PC AB09-69-1HNL, SHABLE FEDERAL PC AB11-69-1HN,  
SHABLE USX PC AB11-68-1HN & SHABLE AB09-68-1HNL  
SECTION 11, TOWNSHIP 7 NORTH, RANGE 64 WEST OF THE 6TH PRINCIPAL MERIDIAN

