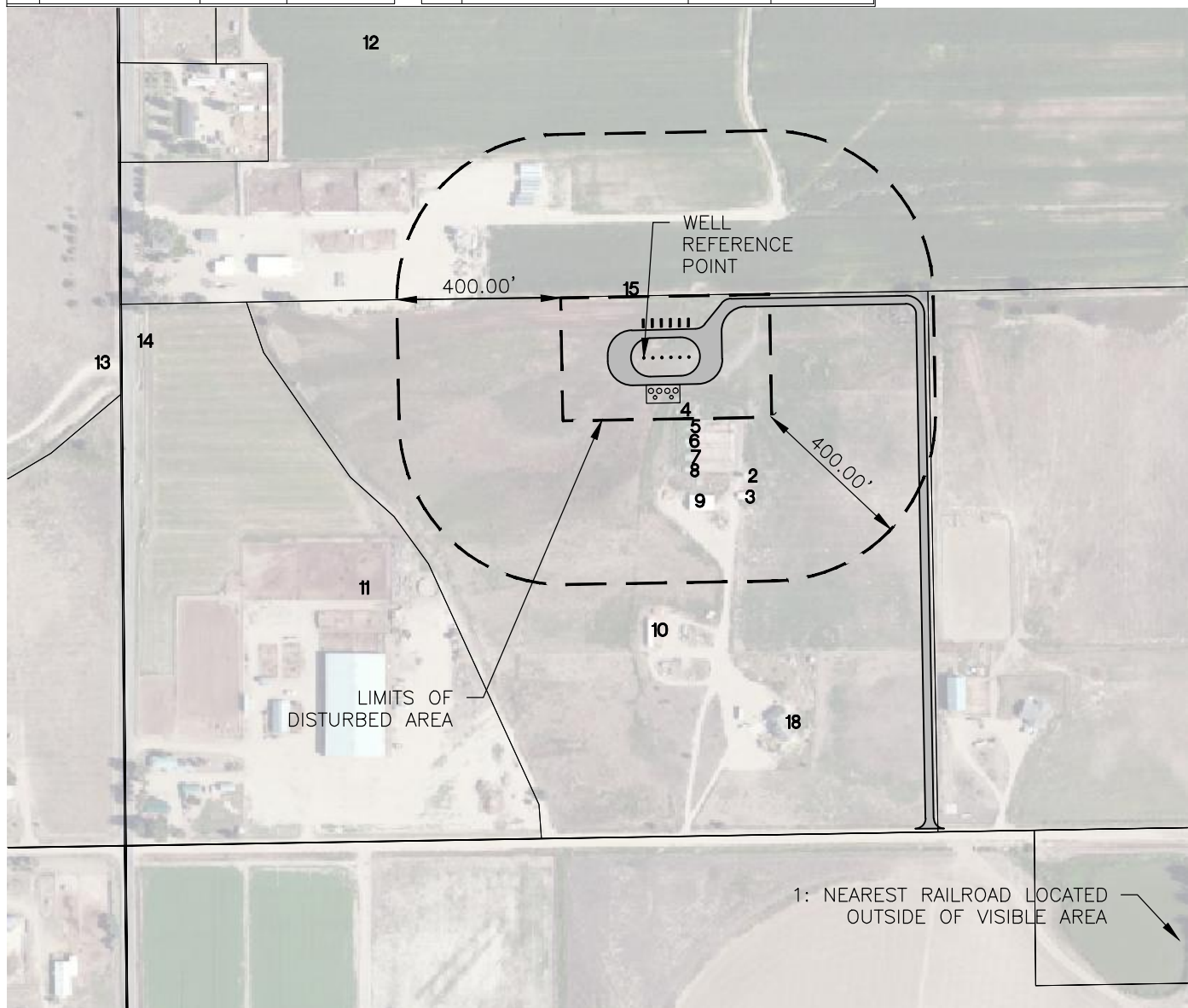
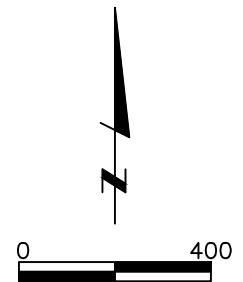


OPERATOR

ST. JAMES ENERGY OPERATING, INC.
 11177 EAGLE VIEW DRIVE, STE 1
 SANDY, UT 84092
 (801) 576-1154

VISIBLE IMPROVEMENTS TABLE			
#	Description	Length	Direction
1	RAILROAD	11470'	S43°E
2	OUT BUILDING	370'	S41°E
3	OUT BUILDING	402'	S35°E
4	OUT BUILDING	150'	S33°E
5	LIVESTOCK PEN	198'	S32°E
6	LIVESTOCK PEN	222'	S28°E
7	LIVESTOCK PEN	258'	S24°E
8	LIVESTOCK PEN	285'	S21°E

VISIBLE IMPROVEMENTS TABLE			
#	Description	Length	Direction
9	OUT BUILDING	351'	S19°E
10	OUT BUILDING	635'	S01°E
11	WATER WELL	849'	S51°W
12	WATER WELL	993'	N40°W
13	ABOVE GROUND UTILITY	1274'	S90°W
14	CR 55	1243'	N90°W
15	PROPERTY LINE	152'	N01°W
18	RESIDENCE	939'	S20°E



LAMP RYNEARSON
 & ASSOCIATES

4715 Innovation Drive 970.226.0342 | P
 Fort Collins, CO 80525 970.226.0879 | F
 www.LRA-Inc.com

ALBRIGHTON 10-6N-64W
 LOCATION DRAWING

drawn by
 SSZ

date
 2/28/2013

cogcc id

project - task number
 0213005.01

book and page
 ST. JAMES 01 38-43

surface - location
 SEC 10 T6N R64W

path\filename P:_Engineering\0213005.01\DRAWINGS\EXHIBITS\Form 2A\Location Drawing.dwg