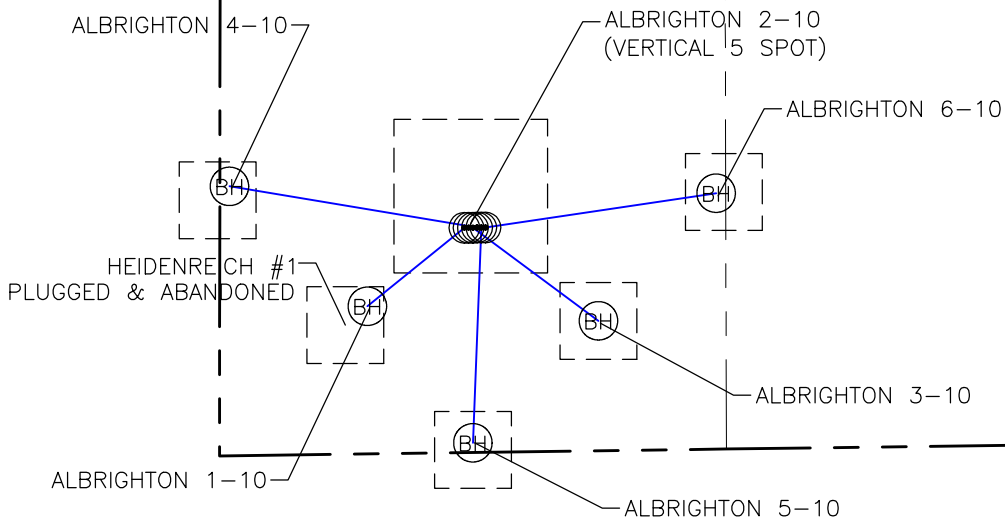


SECTION 10 T6N R64W

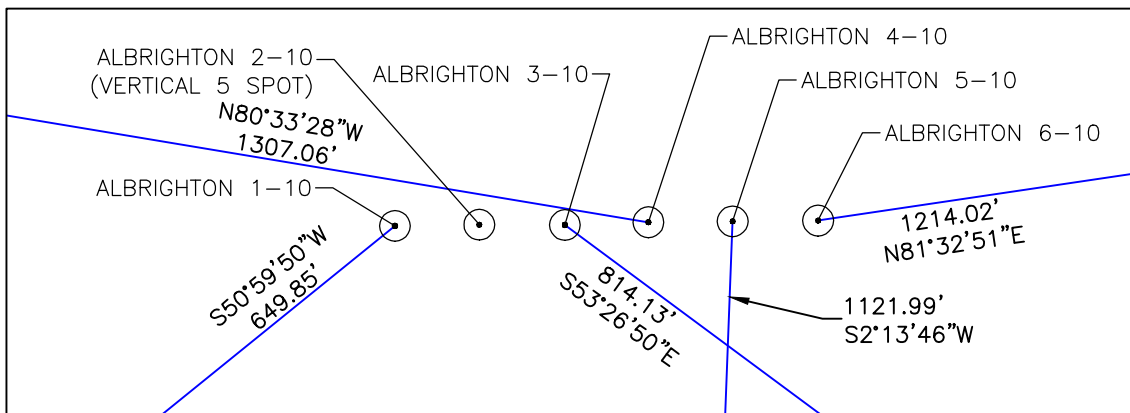


MULTI-WELL PLAN

1" = 1000'

OPERATOR

ST. JAMES ENERGY OPERATING, INC.
11177 EAGLE VIEW DRIVE, STE 1
SANDY, UT 84092
(801) 576-1154



ALBRIGHTON WELL PAD

1" = 50'



LAMP RYNEARSON
& ASSOCIATES

4715 Innovation Drive 970.226.0342 | P
Fort Collins, CO 80525 970.226.0879 | F
www.LRA-Inc.com

ALBRIGHTON 10-6N-64W
MULTI-WELL PLAN

drawn by

KJW/EKM

date

2/28/2013

cogcc id

project - task number

0213005.01

book and page

ST. JAMES 01 38-43

surface - location

SEC 10 T6N R64W

path\filename P:_Engineering\0213005.01\DRAWINGS\0213005-01PNT100.dwg