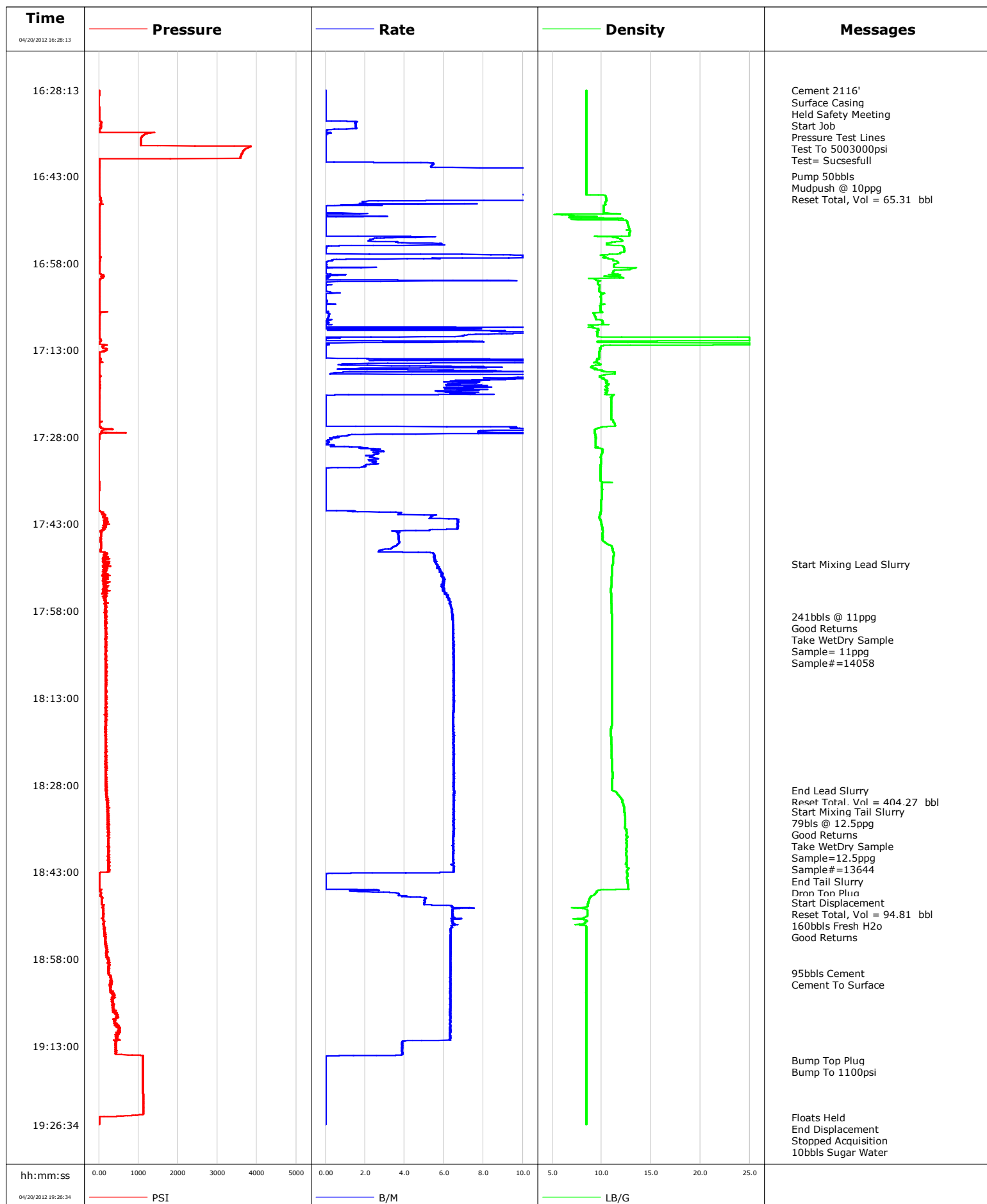


<b>Well</b>	SGU 8514 B-22	<b>Client</b>	ENCANA
<b>Field</b>	N PARACHUTE	<b>SIR No.</b>	C4HD-00135
<b>Engineer</b>		<b>Job Type</b>	SURFACE
<b>Country</b>	United States	<b>Job Date</b>	04-20-2012

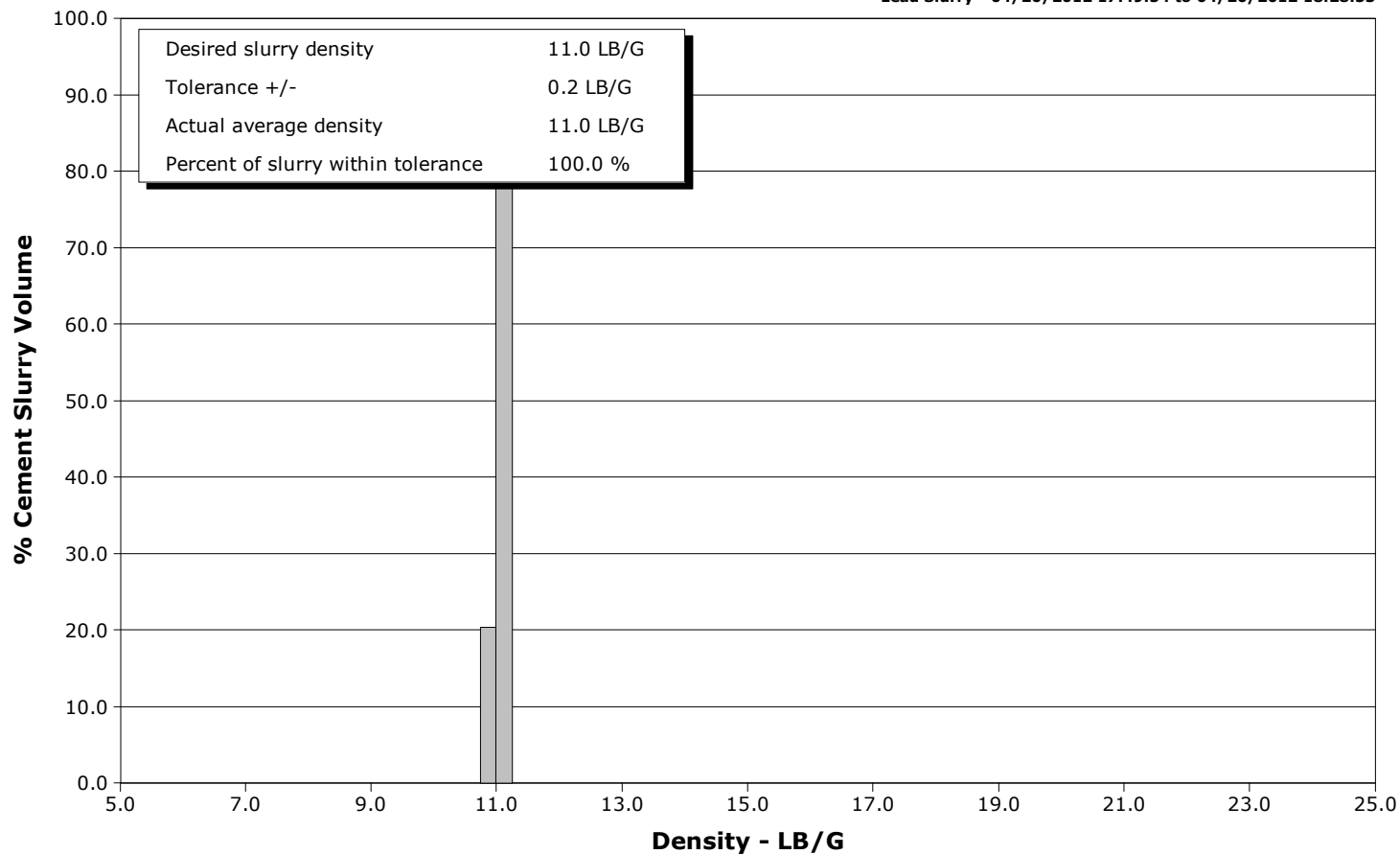


# Schlumberger Cementing Qa/Qc Density Report

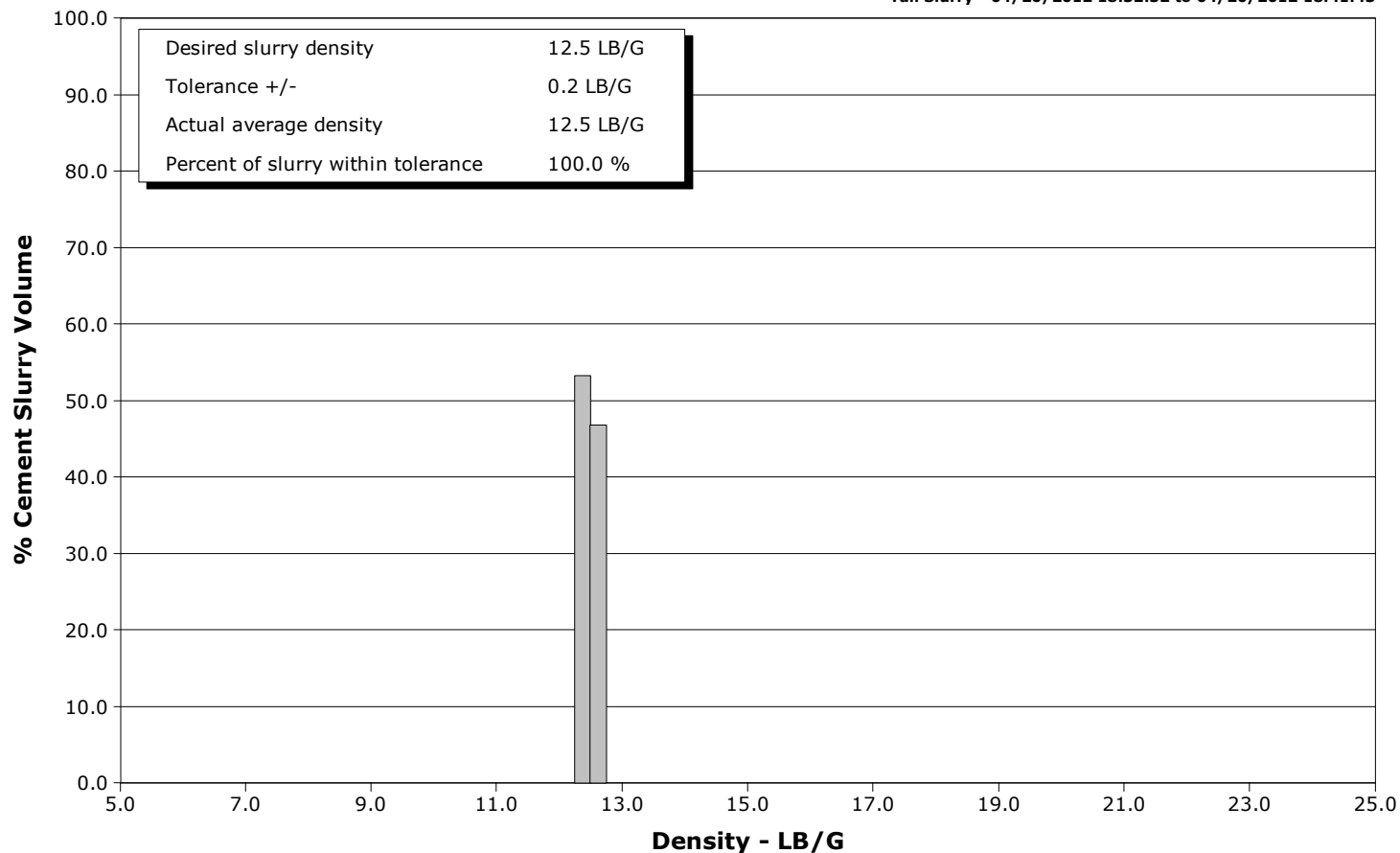
**Well** SGU 8514 B-22  
**Field** N PARACHUTE  
**Engineer**  
**Country** United States

**Client** ENCANA  
**SIR No.** C4HD-00135  
**Job Type** SURFACE  
**Job Date** 04-20-2012

**Lead Slurry - 04/20/2012 17:49:54 to 04/20/2012 18:28:53**



**Tail Slurry - 04/20/2012 18:32:32 to 04/20/2012 18:41:43**





# Cementing Service Report

				Customer ENCANA			Job Number C4HD-00135								
Well SGU 8514 B-22			Location (legal) N PARACHUTE			Schlumberger Location GCO			Job Start Apr/20/2012						
Field N PARACHUTE		Formation Name/Type			Deviation		Bit Size		Well MD		Well TVD				
County GARFILED		State/Province Colorado			BHP		BHST		BHCT		Pore Press. Gradient				
Well Master 0631375391		API/UWI													
Rig Name PATTERSON 306		Drilled For Gas		Service Via Land		Casing/Liner									
Offshore Zone		Well Class New		Well Type		Depth,		Size,		Weight,		Grade		Thread	
Drilling Fluid Type			Max. Density		Plastic Viscosity		Tubing/Drill Pipe								
Service Line Cementing		Job Type SURFACE				Depth,		Size,		Weight,		Grade		Thread	
Max. Allowed Tub. Press		Max. Allowed Ann. Press		WH Connection		Perforations/Open Hole									
Service Instructions 471sks 11ppg lead 2.87ft3/sk 246sks 12.5ppg tail 1.81ft3/sk 160bbbls Fresh H2o WATER TEST= GOOD						Top,		Bottom,				No. of Shots		Total Interval	
						Treat Down Casing		Displacement 160.0 bbl		Packer Type		Packer Depth			
						Tubing Vol.		Casing Vol. 163.0 bbl		Annular Vol. 259.0 bbl		Openhole Vol. 424.0 bbl			
Casing/Tubing Secured <input checked="" type="checkbox"/>		1 Hole Vol. Circulated prior to Cement <input checked="" type="checkbox"/>				Casing Tools				Squeeze Job					
Lift Pressure				Shoe Type Guide				Squeeze Type							
Pipe Rotated <input type="checkbox"/>		Pipe Reciprocated <input type="checkbox"/>		Shoe Depth 2116.0 ft				Tool Type							
No. Centralizers		Top Plugs 1		Bottom Plugs		Stage Tool Type				Tool Depth					
Cement Head Type Single				Stage Tool Depth				Tail Pipe Size							
Job Scheduled For Apr/20/2012		Arrived on Location Apr/20/2012		Leave Location Apr/20/2012		Collar Type Diff-Fill				Tail Pipe Depth					
						Collar Depth 2069.0 ft				Sqz. Total Vol.					
Date	Time 24-hr clock	Treating Pressure PSI	Flow Rate B/M	Density LB/G	Volume BBL	Message									
04/20/2012	15:21:54					Started Acquisition									
04/20/2012	16:28:13	1	0.0	8.46	0.0										
04/20/2012	16:28:15					Cement 2116'									
04/20/2012	16:28:15	2	0.0	8.45	0.0										
04/20/2012	16:28:16					Surface Casing									
04/20/2012	16:28:16					Held Safety Meeting									
04/20/2012	16:28:16	1	0.0	8.46	0.0										
04/20/2012	16:28:18					Start Job									
04/20/2012	16:28:18	2	0.0	8.46	0.0										
04/20/2012	16:28:20					Pressure Test Lines									
04/20/2012	16:28:20	2	0.0	8.46	0.0										
04/20/2012	16:28:22					Test To 5003000psi									
04/20/2012	16:28:22					Test= Sucsesfull									
04/20/2012	16:28:22	1	0.0	8.46	0.0										
04/20/2012	16:28:24	1	0.0	8.45	0.0										
04/20/2012	16:28:54	2	0.0	8.46	0.0										
04/20/2012	16:29:24	-1	0.0	8.46	0.0										
04/20/2012	16:29:54	-1	0.0	8.46	0.0										
04/20/2012	16:30:24	-1	0.0	8.46	0.0										
04/20/2012	16:30:54	-1	0.0	8.46	0.0										
04/20/2012	16:31:24	1	0.0	8.45	0.0										

Well			Field		Job Start	Customer	Job Number
SGU 8514 B-22			N PARACHUTE		Apr/20/2012	ENCANA	C4HD-00135
Date	Time 24-hr clock	Treating Pressure PSI	Flow Rate B/M	Density LB/G	Volume BBL	Message	
04/20/2012	16:32:24	2	0.0	8.46	0.0		
04/20/2012	16:32:54	3	0.0	8.46	0.0		
04/20/2012	16:33:24	3	0.0	8.45	0.0		
04/20/2012	16:33:54	53	1.5	8.46	0.5		
04/20/2012	16:34:24	49	1.5	8.45	1.3		
04/20/2012	16:34:54	28	1.4	8.45	2.1		
04/20/2012	16:35:24	18	0.0	8.46	2.2		
04/20/2012	16:35:54	1149	0.0	8.45	2.2		
04/20/2012	16:36:24	1071	0.0	8.46	2.2		
04/20/2012	16:36:54	1060	0.0	8.46	2.2		
04/20/2012	16:37:24	1058	0.0	8.46	2.2		
04/20/2012	16:37:54	3836	0.0	8.46	2.2		
04/20/2012	16:38:24	3701	0.0	8.46	2.2		
04/20/2012	16:38:54	3636	0.0	8.46	2.2		
04/20/2012	16:39:24	3603	0.0	8.46	2.2		
04/20/2012	16:39:54	3580	0.0	8.46	2.2		
04/20/2012	16:40:24	19	0.0	8.46	2.2		
04/20/2012	16:40:54	16	5.4	8.46	3.4		
04/20/2012	16:41:24	16	5.3	8.46	6.1		
04/20/2012	16:41:54	10	12.2	8.46	10.7		
04/20/2012	16:42:24	11	12.1	8.45	16.7		
04/20/2012	16:42:54	11	12.1	8.45	22.8		
04/20/2012	16:43:04					Pump 50bbls	
04/20/2012	16:43:04	10	12.0	8.45	24.8		
04/20/2012	16:43:16					Mudpush @ 10ppg	
04/20/2012	16:43:16	10	12.0	8.45	27.2		
04/20/2012	16:43:24	9	11.9	8.45	28.8		
04/20/2012	16:43:54	10	11.7	8.45	34.7		
04/20/2012	16:44:24	9	11.7	8.45	40.6		
04/20/2012	16:44:54	9	11.7	8.45	46.4		
04/20/2012	16:45:24	10	11.6	8.45	52.2		
04/20/2012	16:45:54	9	11.6	8.45	58.0		
04/20/2012	16:46:24	10	10.8	10.37	63.7		
04/20/2012	16:46:33					Reset Total, Vol = 65.31 bbl	
04/20/2012	16:46:33	37	11.5	10.41	65.3		
04/20/2012	16:46:54	39	11.2	10.47	69.4		
04/20/2012	16:47:24	57	1.9	10.43	73.8		
04/20/2012	16:47:54	122	2.7	10.38	75.2		
04/20/2012	16:48:24	21	0.0	10.22	75.6		
04/20/2012	16:48:54	19	0.0	10.22	75.6		
04/20/2012	16:49:24	18	0.0	10.24	75.6		
04/20/2012	16:49:54	18	0.0	6.74	75.8		
04/20/2012	16:50:24	18	0.0	11.92	76.1		
04/20/2012	16:50:54	18	0.0	12.59	76.1		
04/20/2012	16:51:24	19	0.0	12.67	76.1		
04/20/2012	16:51:54	18	0.0	12.74	76.1		
04/20/2012	16:52:24	18	0.0	12.82	76.1		
04/20/2012	16:52:54	11	0.0	12.82	76.1		
04/20/2012	16:53:24	17	0.0	12.03	76.1		
04/20/2012	16:53:54	20	2.4	11.90	77.8		
04/20/2012	16:54:24	18	3.5	11.33	79.0		
04/20/2012	16:54:54	15	5.7	10.57	81.5		
04/20/2012	16:55:24	16	0.0	12.27	82.0		
04/20/2012	16:55:54	16	0.0	12.31	82.0		

Well			Field		Job Start	Customer		Job Number
SGU 8514 B-22			N PARACHUTE		Apr/20/2012	ENCANA		C4HD-00135
Date	Time 24-hr clock	Treating Pressure PSI	Flow Rate B/M	Density LB/G	Volume BBL	Message		
04/20/2012	16:56:54	38	10.6	10.26	85.9			
04/20/2012	16:57:24	29	1.0	11.11	89.7			
04/20/2012	16:57:54	23	0.0	11.63	89.8			
04/20/2012	16:58:24	21	0.0	11.27	89.9			
04/20/2012	16:58:54	20	0.0	13.42	90.0			
04/20/2012	16:59:24	19	0.0	11.18	90.0			
04/20/2012	16:59:54	43	0.1	11.36	90.0			
04/20/2012	17:00:24	88	0.2	11.74	90.2			
04/20/2012	17:00:54	29	0.0	9.38	90.2			
04/20/2012	17:01:24	18	0.0	9.64	91.6			
04/20/2012	17:01:54	16	0.0	9.76	91.7			
04/20/2012	17:02:24	16	0.0	9.75	91.7			
04/20/2012	17:02:54	15	0.0	9.73	91.7			
04/20/2012	17:03:24	15	0.0	9.94	91.8			
04/20/2012	17:03:54	15	0.0	9.89	91.8			
04/20/2012	17:04:24	15	0.0	9.94	91.8			
04/20/2012	17:04:54	15	0.0	9.95	91.8			
04/20/2012	17:05:24	15	0.0	9.85	91.8			
04/20/2012	17:05:54	15	0.0	9.90	91.8			
04/20/2012	17:06:24	15	0.1	10.08	91.8			
04/20/2012	17:06:54	25	0.2	9.26	91.9			
04/20/2012	17:07:24	21	0.1	9.38	91.9			
04/20/2012	17:07:54	20	0.1	10.05	92.0			
04/20/2012	17:08:24	18	0.1	10.12	92.1			
04/20/2012	17:08:54	19	0.0	9.05	92.1			
04/20/2012	17:09:24	15	5.5	9.56	93.5			
04/20/2012	17:09:54	9	10.2	9.60	96.4			
04/20/2012	17:10:24	10	7.2	9.58	101.2			
04/20/2012	17:10:54	17	0.0	25.00	103.8			
04/20/2012	17:11:24	51	0.0	25.00	103.9			
04/20/2012	17:11:54	11	0.1	25.00	106.0			
04/20/2012	17:12:24	96	0.0	9.95	106.0			
04/20/2012	17:12:54	199	0.0	9.87	106.0			
04/20/2012	17:13:24	23	0.0	9.73	106.0			
04/20/2012	17:13:54	12	0.0	9.74	106.0			
04/20/2012	17:14:24	11	0.0	9.77	106.0			
04/20/2012	17:14:54	25	12.0	9.56	108.4			
04/20/2012	17:15:24	15	1.2	9.67	113.4			
04/20/2012	17:15:54	6	8.0	8.99	114.9			
04/20/2012	17:16:24	9	2.1	9.29	117.0			
04/20/2012	17:16:54	7	0.5	11.36	119.9			
04/20/2012	17:17:24	27	16.2	10.17	122.6			
04/20/2012	17:17:54	9	10.4	10.11	128.7			
04/20/2012	17:18:24	13	7.6	10.43	132.9			
04/20/2012	17:18:54	16	6.3	10.71	136.3			
04/20/2012	17:19:24	20	8.4	10.44	139.9			
04/20/2012	17:19:54	13	7.5	10.42	143.4			
04/20/2012	17:20:24	11	6.4	10.50	146.8			
04/20/2012	17:20:54	15	0.0	11.08	149.1			
04/20/2012	17:21:24	17	0.0	10.98	149.1			
04/20/2012	17:21:54	2	0.0	10.98	149.1			
04/20/2012	17:22:24	2	0.0	10.97	149.1			
04/20/2012	17:22:54	2	0.0	10.97	149.1			
04/20/2012	17:23:24	2	0.0	10.97	149.1			

Well			Field		Job Start	Customer		Job Number
SGU 8514 B-22			N PARACHUTE		Apr/20/2012	ENCANA		C4HD-00135
Date	Time 24-hr clock	Treating Pressure PSI	Flow Rate B/M	Density LB/G	Volume BBL	Message		
04/20/2012	17:24:24	2	0.0	10.97	149.1			
04/20/2012	17:24:54	2	0.0	10.97	149.1			
04/20/2012	17:25:24	58	0.0	11.16	149.1			
04/20/2012	17:25:54	5	0.0	11.35	149.1			
04/20/2012	17:26:24	44	9.5	9.82	150.8			
04/20/2012	17:26:54	82	8.1	9.28	155.9			
04/20/2012	17:27:24	72	10.7	9.29	160.5			
04/20/2012	17:27:54	5	0.8	9.37	161.8			
04/20/2012	17:28:24	1	0.3	9.41	162.0			
04/20/2012	17:28:54	-3	0.2	9.41	162.1			
04/20/2012	17:29:24	-7	0.4	9.40	162.2			
04/20/2012	17:29:54	-4	2.0	9.60	162.6			
04/20/2012	17:30:24	-5	2.7	10.08	163.8			
04/20/2012	17:30:54	-10	2.7	10.01	165.1			
04/20/2012	17:31:24	-4	2.3	9.90	166.3			
04/20/2012	17:31:54	-3	2.5	9.91	167.5			
04/20/2012	17:32:24	-3	2.4	9.90	168.7			
04/20/2012	17:32:54	-3	2.0	9.90	169.9			
04/20/2012	17:33:24	-1	0.0	9.89	170.7			
04/20/2012	17:33:54	-1	0.0	9.90	170.7			
04/20/2012	17:34:24	-1	0.0	9.90	170.7			
04/20/2012	17:34:54	-1	0.0	9.90	170.7			
04/20/2012	17:35:24	-1	0.0	9.90	170.7			
04/20/2012	17:35:54	2	0.0	10.23	170.7			
04/20/2012	17:36:24	2	0.0	10.04	170.7			
04/20/2012	17:36:54	2	0.0	10.04	170.7			
04/20/2012	17:37:24	-0	0.0	10.02	170.7			
04/20/2012	17:37:54	-1	0.0	10.03	170.7			
04/20/2012	17:38:24	-1	0.0	10.03	170.7			
04/20/2012	17:38:54	-1	0.0	9.92	170.7			
04/20/2012	17:39:24	-1	0.0	9.91	170.7			
04/20/2012	17:39:54	-1	0.0	9.91	170.7			
04/20/2012	17:40:24	-3	0.0	9.91	170.7			
04/20/2012	17:40:54	50	1.6	9.90	170.9			
04/20/2012	17:41:24	99	4.0	9.84	172.7			
04/20/2012	17:41:54	185	5.3	9.75	175.3			
04/20/2012	17:42:24	165	6.7	9.90	178.4			
04/20/2012	17:42:54	203	6.7	10.00	181.8			
04/20/2012	17:43:24	149	6.7	10.04	185.1			
04/20/2012	17:43:54	98	6.7	10.10	188.4			
04/20/2012	17:44:24	54	3.6	10.10	190.7			
04/20/2012	17:44:54	51	3.7	10.10	192.6			
04/20/2012	17:45:24	49	3.7	10.10	194.4			
04/20/2012	17:45:54	49	3.7	10.12	196.3			
04/20/2012	17:46:24	50	3.7	10.52	198.1			
04/20/2012	17:46:54	56	3.5	11.02	199.9			
04/20/2012	17:47:24	42	2.9	11.11	201.6			
04/20/2012	17:47:54	113	4.7	11.21	203.1			
04/20/2012	17:48:24	168	5.5	11.24	205.8			
04/20/2012	17:48:54	183	5.5	11.17	208.5			
04/20/2012	17:49:24	143	5.5	11.16	211.3			
04/20/2012	17:49:54					Start Mixing Lead Slurry		
04/20/2012	17:49:54	153	5.6	11.14	214.1			
04/20/2012	17:50:24	91	5.8	11.05	216.9			

Well			Field		Job Start	Customer		Job Number
SGU 8514 B-22			N PARACHUTE		Apr/20/2012	ENCANA		C4HD-00135
Date	Time 24-hr clock	Treating Pressure PSI	Flow Rate B/M	Density LB/G	Volume BBL	Message		
04/20/2012	17:51:24	164	5.9	11.05	222.7			
04/20/2012	17:51:54	143	5.9	11.03	225.6			
04/20/2012	17:52:24	136	6.0	11.01	228.6			
04/20/2012	17:52:54	208	6.0	11.01	231.6			
04/20/2012	17:53:24	140	5.9	11.03	234.6			
04/20/2012	17:53:54	167	6.0	10.96	237.6			
04/20/2012	17:54:24	108	6.0	10.92	240.5			
04/20/2012	17:54:54	114	6.1	10.93	243.5			
04/20/2012	17:55:24	204	6.2	10.95	246.6			
04/20/2012	17:55:54	139	6.2	10.96	249.7			
04/20/2012	17:56:24	192	6.3	10.97	252.8			
04/20/2012	17:56:54	153	6.3	10.98	256.0			
04/20/2012	17:57:24	202	6.4	11.00	259.1			
04/20/2012	17:57:54	164	6.4	11.01	262.3			
04/20/2012	17:58:24	173	6.4	11.03	265.5			
04/20/2012	17:58:54	193	6.4	11.03	268.7			
04/20/2012	17:58:57					241bbls @ 11ppg		
04/20/2012	17:58:57					Good Returns		
04/20/2012	17:58:57					Take WetDry Sample		
04/20/2012	17:58:57					Sample= 11ppg		
04/20/2012	17:58:57					Sample#=14058		
04/20/2012	17:58:57	199	6.4	11.03	269.1			
04/20/2012	17:59:24	169	6.4	11.04	271.9			
04/20/2012	17:59:54	203	6.4	11.04	275.2			
04/20/2012	18:00:24	173	6.5	11.05	278.4			
04/20/2012	18:00:54	193	6.5	11.06	281.6			
04/20/2012	18:01:24	172	6.5	11.07	284.8			
04/20/2012	18:01:54	170	6.5	11.07	288.1			
04/20/2012	18:02:24	168	6.5	11.07	291.3			
04/20/2012	18:02:54	166	6.5	11.07	294.5			
04/20/2012	18:03:24	181	6.5	11.06	297.8			
04/20/2012	18:03:54	181	6.5	11.05	301.0			
04/20/2012	18:04:24	172	6.5	11.05	304.3			
04/20/2012	18:04:54	198	6.5	11.05	307.5			
04/20/2012	18:05:24	173	6.5	11.05	310.7			
04/20/2012	18:05:54	202	6.5	11.05	314.0			
04/20/2012	18:06:24	170	6.5	11.05	317.2			
04/20/2012	18:06:54	175	6.5	11.05	320.5			
04/20/2012	18:07:24	164	6.5	11.06	323.7			
04/20/2012	18:07:54	173	6.5	11.06	326.9			
04/20/2012	18:08:24	165	6.5	11.07	330.2			
04/20/2012	18:08:54	174	6.5	11.07	333.4			
04/20/2012	18:09:24	174	6.5	11.06	336.7			
04/20/2012	18:09:54	167	6.5	11.06	339.9			
04/20/2012	18:10:24	195	6.5	11.06	343.1			
04/20/2012	18:10:54	173	6.5	11.05	346.4			
04/20/2012	18:11:24	188	6.5	11.05	349.6			
04/20/2012	18:11:54	177	6.5	11.04	352.9			
04/20/2012	18:12:24	173	6.5	11.04	356.1			
04/20/2012	18:12:54	206	6.5	11.04	359.3			
04/20/2012	18:13:24	167	6.5	11.04	362.6			
04/20/2012	18:13:54	201	6.5	11.04	365.8			
04/20/2012	18:14:24	173	6.5	11.04	369.1			
04/20/2012	18:14:54	186	6.5	11.05	372.3			

Well			Field		Job Start	Customer	Job Number
SGU 8514 B-22			N PARACHUTE		Apr/20/2012	ENCANA	C4HD-00135
Date	Time 24-hr clock	Treating Pressure PSI	Flow Rate B/M	Density LB/G	Volume BBL	Message	
04/20/2012	18:15:54	177	6.5	11.04	378.8		
04/20/2012	18:16:24	174	6.5	11.06	382.0		
04/20/2012	18:16:54	171	6.5	11.07	385.2		
04/20/2012	18:17:24	167	6.5	11.06	388.5		
04/20/2012	18:17:54	175	6.5	11.00	391.7		
04/20/2012	18:18:24	187	6.5	10.93	394.9		
04/20/2012	18:18:54	163	6.5	10.91	398.2		
04/20/2012	18:19:24	166	6.5	10.92	401.4		
04/20/2012	18:19:54	166	6.5	10.94	404.7		
04/20/2012	18:20:54	165	6.5	10.98	411.1		
04/20/2012	18:21:24	166	6.5	10.99	414.4		
04/20/2012	18:21:54	185	6.5	11.00	417.6		
04/20/2012	18:22:24	169	6.5	11.01	420.9		
04/20/2012	18:22:54	201	6.5	11.01	424.1		
04/20/2012	18:23:24	168	6.5	11.03	427.3		
04/20/2012	18:23:54	164	6.5	11.04	430.6		
04/20/2012	18:24:24	159	6.5	11.05	433.8		
04/20/2012	18:24:54	171	6.5	11.06	437.1		
04/20/2012	18:25:24	169	6.5	11.07	440.3		
04/20/2012	18:25:54	191	6.5	11.08	443.5		
04/20/2012	18:26:24	168	6.5	11.08	446.8		
04/20/2012	18:26:54	181	6.5	11.08	450.0		
04/20/2012	18:27:24	198	6.5	11.07	453.3		
04/20/2012	18:27:54	176	6.5	11.08	456.5		
04/20/2012	18:28:24	182	6.5	11.07	459.7		
04/20/2012	18:28:53					End Lead Slurry	
04/20/2012	18:28:53	171	6.5	11.06	462.9		
04/20/2012	18:28:54	178	6.5	11.06	463.0		
04/20/2012	18:29:24	183	6.5	11.53	466.2		
04/20/2012	18:29:54	187	6.5	11.78	469.5		
04/20/2012	18:29:55					Reset Total, Vol = 404.27 bbl	
04/20/2012	18:29:55	197	6.5	11.79	469.6		
04/20/2012	18:30:24	231	6.5	12.00	472.7		
04/20/2012	18:30:54	208	6.5	12.07	476.0		
04/20/2012	18:31:24	222	6.5	12.19	479.2		
04/20/2012	18:31:54	208	6.5	12.29	482.4		
04/20/2012	18:32:24	245	6.5	12.27	485.7		
04/20/2012	18:32:32					Start Mixing Tail Slurry	
04/20/2012	18:32:32	239	6.5	12.30	486.5		
04/20/2012	18:32:34					79bls @ 12.5ppg	
04/20/2012	18:32:34					Good Returns	
04/20/2012	18:32:34					Take WetDry Sample	
04/20/2012	18:32:34					Sample=12.5ppg	
04/20/2012	18:32:34	215	6.5	12.30	486.8		
04/20/2012	18:32:35					Sample#=13644	
04/20/2012	18:32:35	215	6.5	12.30	486.9		
04/20/2012	18:32:54	245	6.5	12.33	488.9		
04/20/2012	18:33:24	230	6.5	12.37	492.2		
04/20/2012	18:33:54	233	6.5	12.39	495.4		
04/20/2012	18:34:24	234	6.5	12.37	498.6		
04/20/2012	18:34:54	260	6.5	12.37	501.9		
04/20/2012	18:35:24	225	6.5	12.35	505.1		
04/20/2012	18:35:54	234	6.5	12.50	508.4		
04/20/2012	18:36:24	223	6.5	12.52	511.6		



Well			Field		Job Start	Customer	Job Number
SGU 8514 B-22			N PARACHUTE		Apr/20/2012	ENCANA	C4HD-00135
Date	Time 24-hr clock	Treating Pressure PSI	Flow Rate B/M	Density LB/G	Volume BBL	Message	
04/20/2012	18:37:24	238	6.5	12.49	518.1		
04/20/2012	18:37:54	228	6.4	12.50	521.3		
04/20/2012	18:38:24	244	6.5	12.53	524.5		
04/20/2012	18:38:54	223	6.5	12.50	527.8		
04/20/2012	18:39:24	269	6.5	12.53	531.0		
04/20/2012	18:39:54	227	6.5	12.48	534.2		
04/20/2012	18:40:24	230	6.5	12.54	537.5		
04/20/2012	18:40:54	259	6.5	12.52	540.7		
04/20/2012	18:41:24	247	6.5	12.49	543.9		
04/20/2012	18:41:43					End Tail Slurry	
04/20/2012	18:41:43	248	6.4	12.47	546.0		
04/20/2012	18:41:45					Drop Top Plug	
04/20/2012	18:41:45	252	6.4	12.54	546.2		
04/20/2012	18:41:54	233	6.5	12.54	547.2		
04/20/2012	18:42:24	253	6.5	12.71	550.4		
04/20/2012	18:42:54	223	6.5	12.53	553.6		
04/20/2012	18:43:24	12	0.0	12.62	555.3		
04/20/2012	18:43:54	9	0.0	12.57	555.3		
04/20/2012	18:44:24	6	0.0	12.60	555.3		
04/20/2012	18:44:54	3	0.0	12.63	555.3		
04/20/2012	18:45:24	3	0.0	12.67	555.3		
04/20/2012	18:45:54	8	0.0	12.69	555.3		
04/20/2012	18:46:24	30	1.9	9.49	556.0		
04/20/2012	18:46:54	47	3.7	9.28	557.7		
04/20/2012	18:47:24	79	5.0	8.88	559.7		
04/20/2012	18:47:54	70	5.0	8.72	562.2		
04/20/2012	18:48:17					Start Displacement	
04/20/2012	18:48:17	70	5.0	8.66	564.1		
04/20/2012	18:48:20					Reset Total, Vol = 94.81 bbl	
04/20/2012	18:48:20	75	5.0	8.65	564.4		
04/20/2012	18:48:22					160bbbls Fresh H2o	
04/20/2012	18:48:22					Good Returns	
04/20/2012	18:48:22	66	5.0	8.64	564.6		
04/20/2012	18:48:24	69	5.0	8.63	564.7		
04/20/2012	18:48:54	101	6.4	8.59	567.5		
04/20/2012	18:49:24	110	6.4	8.40	570.8		
04/20/2012	18:49:54	98	6.4	8.57	574.0		
04/20/2012	18:50:24	112	6.4	8.57	577.2		
04/20/2012	18:50:54	110	6.4	8.20	580.4		
04/20/2012	18:51:24	117	6.4	8.48	583.7		
04/20/2012	18:51:54	115	6.4	8.18	586.9		
04/20/2012	18:52:24	121	6.4	8.45	590.1		
04/20/2012	18:52:54	137	6.3	8.47	593.3		
04/20/2012	18:53:24	148	6.3	8.47	596.5		
04/20/2012	18:53:54	172	6.3	8.46	599.7		
04/20/2012	18:54:24	160	6.3	8.46	602.8		
04/20/2012	18:54:54	157	6.3	8.46	606.0		
04/20/2012	18:55:24	164	6.3	8.46	609.1		
04/20/2012	18:55:54	164	6.3	8.46	612.3		
04/20/2012	18:56:24	218	6.3	8.46	615.5		
04/20/2012	18:56:54	182	6.3	8.46	618.6		
04/20/2012	18:57:24	180	6.3	8.46	621.8		
04/20/2012	18:57:54	224	6.3	8.46	625.0		
04/20/2012	18:58:24	246	6.3	8.46	628.1		

Well			Field		Job Start	Customer		Job Number
SGU 8514 B-22			N PARACHUTE		Apr/20/2012	ENCANA		C4HD-00135
Date	Time 24-hr clock	Treating Pressure PSI	Flow Rate B/M	Density LB/G	Volume BBL	Message		
04/20/2012	18:59:24	225	6.3	8.46	634.4			
04/20/2012	18:59:54	234	6.3	8.46	637.6			
04/20/2012	19:00:27					95bbls Cement		
04/20/2012	19:00:27	240	6.3	8.46	641.1			
04/20/2012	19:00:55					Cement To Surface		
04/20/2012	19:00:55	302	6.3	8.46	643.8			
04/20/2012	19:01:24	304	6.3	8.46	646.8			
04/20/2012	19:01:54	305	6.3	8.46	650.0			
04/20/2012	19:02:24	338	6.3	8.46	653.2			
04/20/2012	19:02:54	299	6.3	8.46	656.3			
04/20/2012	19:03:24	298	6.3	8.46	659.5			
04/20/2012	19:03:54	316	6.3	8.41	662.6			
04/20/2012	19:04:24	369	6.3	8.46	665.8			
04/20/2012	19:04:54	322	6.3	8.46	668.9			
04/20/2012	19:05:24	327	6.3	8.46	672.1			
04/20/2012	19:05:54	370	6.3	8.46	675.3			
04/20/2012	19:06:24	363	6.3	8.46	678.4			
04/20/2012	19:06:54	433	6.3	8.46	681.6			
04/20/2012	19:07:24	403	6.3	8.46	684.7			
04/20/2012	19:07:54	461	6.3	8.46	687.9			
04/20/2012	19:08:24	366	6.3	8.46	691.0			
04/20/2012	19:08:54	394	6.3	8.46	694.2			
04/20/2012	19:09:24	443	6.3	8.46	697.3			
04/20/2012	19:09:54	531	6.3	8.46	700.5			
04/20/2012	19:10:24	525	6.3	8.45	703.6			
04/20/2012	19:10:54	504	6.3	8.46	706.8			
04/20/2012	19:11:24	430	6.3	8.46	709.9			
04/20/2012	19:11:54	466	6.3	8.46	713.1			
04/20/2012	19:12:24	433	3.9	8.46	715.4			
04/20/2012	19:12:54	418	3.9	8.46	717.3			
04/20/2012	19:13:24	429	3.9	8.46	719.3			
04/20/2012	19:13:54	419	3.9	8.46	721.2			
04/20/2012	19:14:24	421	3.9	8.46	723.2			
04/20/2012	19:14:54	1110	0.0	8.46	724.2			
04/20/2012	19:15:24	1106	0.0	8.46	724.2			
04/20/2012	19:15:27					Bump Top Plug		
04/20/2012	19:15:27	1104	0.0	8.46	724.2			
04/20/2012	19:15:28					Bump To 1100psi		
04/20/2012	19:15:28	1105	0.0	8.46	724.2			
04/20/2012	19:15:54	1105	0.0	8.46	724.2			
04/20/2012	19:16:24	1104	0.0	8.46	724.2			
04/20/2012	19:16:54	1105	0.0	8.46	724.2			
04/20/2012	19:17:24	1106	0.0	8.46	724.2			
04/20/2012	19:17:54	1107	0.0	8.46	724.2			
04/20/2012	19:18:24	1108	0.0	8.46	724.2			
04/20/2012	19:18:54	1110	0.0	8.46	724.2			
04/20/2012	19:19:24	1111	0.0	8.46	724.2			
04/20/2012	19:19:54	1112	0.0	8.46	724.2			
04/20/2012	19:20:24	1113	0.0	8.46	724.2			
04/20/2012	19:20:54	1114	0.0	8.46	724.2			
04/20/2012	19:21:24	1116	0.0	8.46	724.2			
04/20/2012	19:21:54	1117	0.0	8.46	724.2			
04/20/2012	19:22:24	1118	0.0	8.46	724.2			
04/20/2012	19:22:54	1119	0.0	8.46	724.2			

Well			Field		Job Start	Customer		Job Number
SGU 8514 B-22			N PARACHUTE		Apr/20/2012	ENCANA		C4HD-00135
Date	Time 24-hr clock	Treating Pressure PSI	Flow Rate B/M	Density LB/G	Volume BBL	Message		
04/20/2012	19:23:54	1121	0.0	8.46	724.2			
04/20/2012	19:24:24	1122	0.0	8.46	724.2			
04/20/2012	19:24:54	986	0.0	8.46	724.2			
04/20/2012	19:25:15					Floats Held		
04/20/2012	19:25:15	7	0.0	8.46	724.2			
04/20/2012	19:25:16					End Displacement		
04/20/2012	19:25:16	5	0.0	8.46	724.2			
04/20/2012	19:25:24	5	0.0	8.46	724.2			
04/20/2012	19:25:54	7	0.0	8.46	724.2			
04/20/2012	19:26:24	7	0.0	8.46	724.2			
04/20/2012	19:26:35					Stopped Acquisition		
04/20/2012	20:11:00					10bbls Sugar Water		

Post Job Summary

Average Pump Rates,					Volume of Fluid Injected,			
Slurry	N2	Mud	Maximum Rate		Total Slurry	Mud	Spacer	N2
Treating Pressure Summary,					Breakdown Fluid			
Maximum	Final	Average	Bump Plug to	Breakdown	Type	Volume		Density
Avg. N2 Percent		Designed Slurry Volume		Displacement	Mix Water Temp	Cement Circulated to Surface?		Volume
		320.0 bbl			62 degF	Washed Thru Perfs		To
Customer or Authorized Representative				Schlumberger Supervisor			Circulation Lost	Job Completed
MIKE QUINTANA				JASON CRICK			-	-