



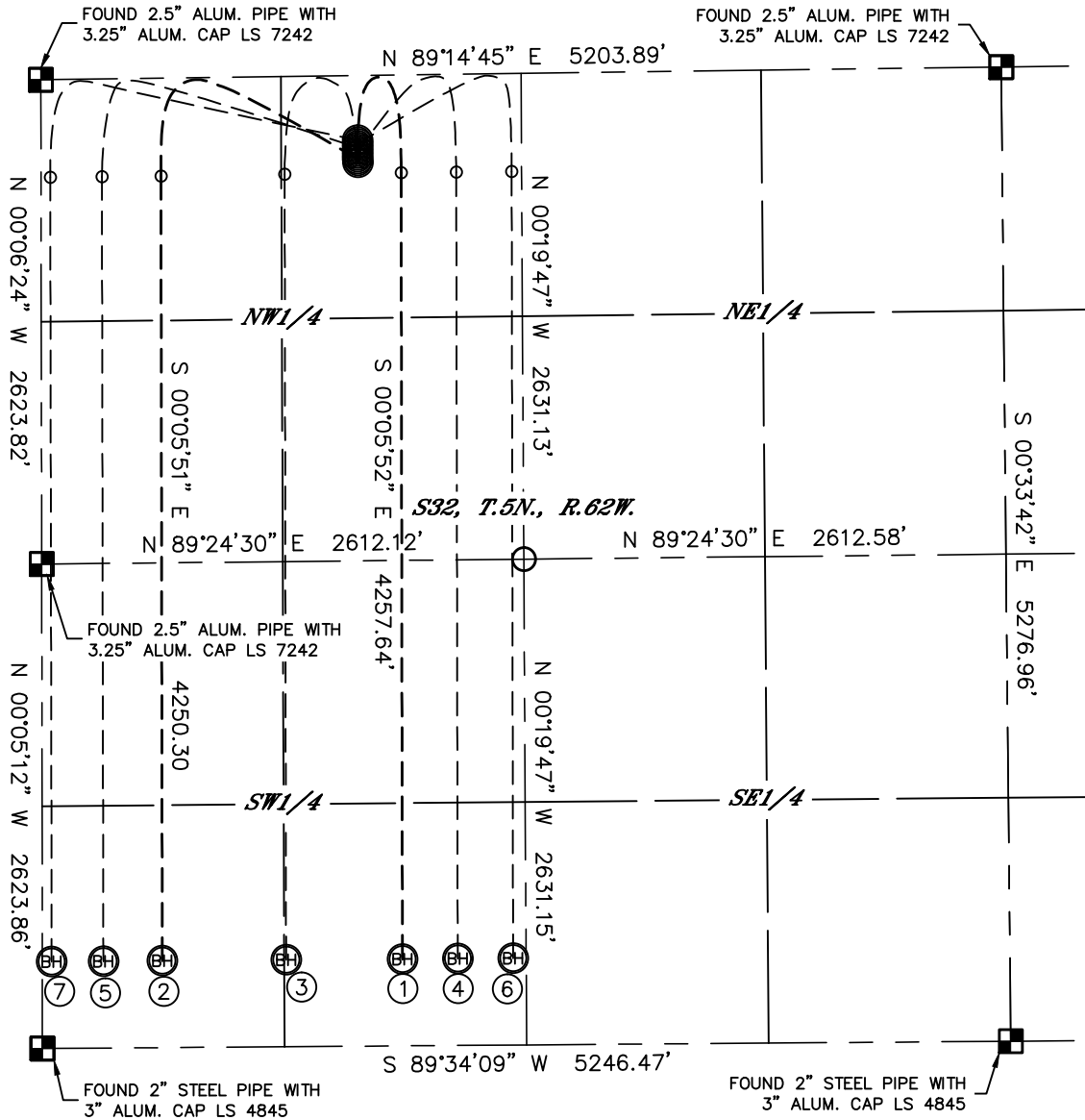
Lat40°, Inc. 1635 Foxtrail Drive, Suite 325 Loveland, CO 970-776-3321

## MULTI-WELL PLAN

STATE ANTELOPE F-32 PAD

THIS MAP DOES NOT REPRESENT A BOUNDARY SURVEY

SECTION: 32  
TOWNSHIP: 5N  
RANGE: 62W



①

—SURFACE LOCATION—  
STATE ANTELOPE  
21–24–32HNB  
470' FNL  
1716' FWL  
LAT: 40.36214°N  
LONG: 104.35078°W

②

—SURFACE LOCATION—  
STATE ANTELOPE  
11–14–32HNB  
450' FNL  
1716' FWL  
LAT: 40.36219°N  
LONG: 104.35078°W

③

—SURFACE LOCATION—  
STATE ANTELOPE A3–32  
430' FNL  
1716' FWL  
LAT–40.36225°N  
LONG–104.35078°W

④

—SURFACE LOCATION—  
STATE ANTELOPE A4–32  
410' FNL  
1715' FWL  
LAT–40.36230°N  
LONG–104.35078°W

⑤

—SURFACE LOCATION—  
STATE ANTELOPE A5–32  
390' FNL  
1715' FWL  
LAT: 40.36235°N  
LONG: 104.35078°W

⑥

—SURFACE LOCATION—  
STATE ANTELOPE A6–32  
370' FNL  
1715' FWL  
LAT–40.36241°N  
LONG–104.35078°W

⑦

—SURFACE LOCATION—  
STATE ANTELOPE A7–32  
350' FNL  
1715' FWL  
LAT–40.36246°N  
LONG–104.35078°W

### LEGEND



= ALIQUOT MONUMENT AS DESCRIBED



= CALCULATED POSITION



0 1000

1"=1000'

DATE: 2/7/2013  
PROJECT#: 2011349

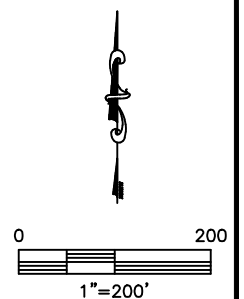
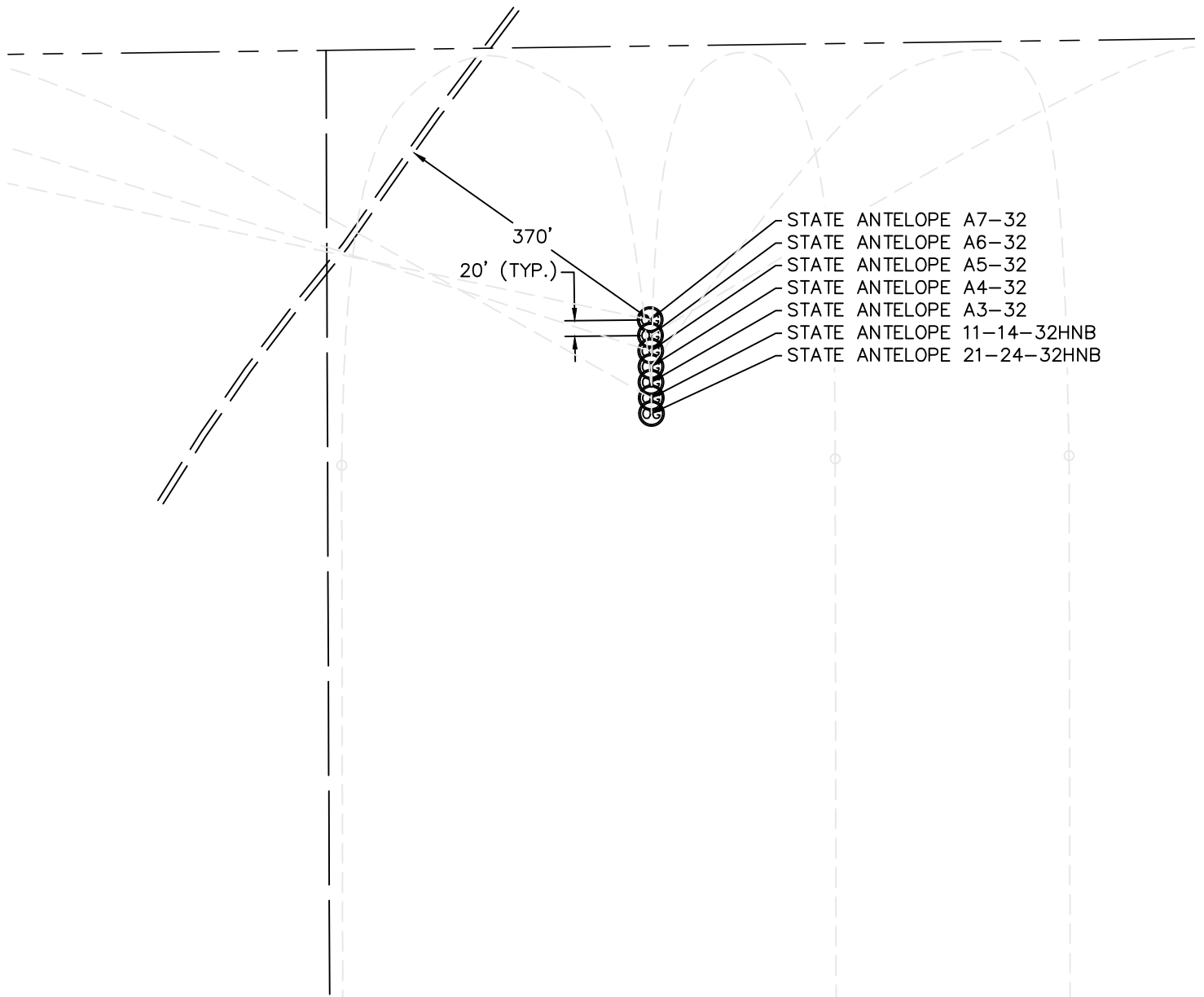


Lat40°, Inc. 1635 Foxtrail Drive, Suite 325 Loveland, CO 970-776-3321

# MULTI-WELL PLAN

STATE ANTELOPE F-32 PAD

SECTION: 32  
TOWNSHIP: 5N  
RANGE: 62W



DATE: 2/7/2013  
PROJECT#: 2011349