

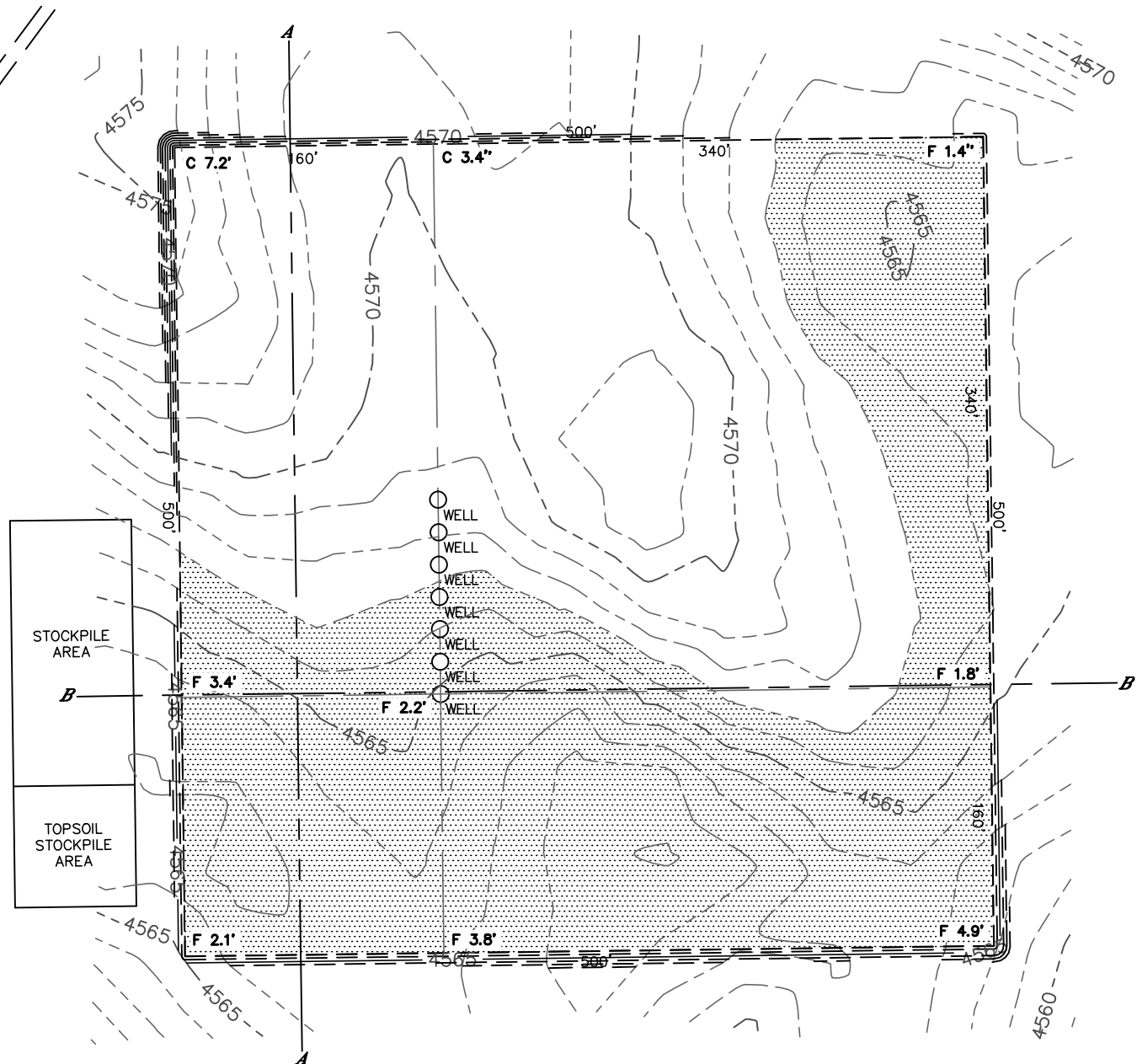


Lat40°, Inc. 1635 Foxtrail Drive, Suite 325 Loveland, CO 970-776-3321

# CUT & FILL DIAGRAM

## STATE ANTELOPE F-32 PAD

SECTION: 32  
TOWNSHIP: 5N  
RANGE: 62W



**OPERATOR: BONANZA CREEK ENERGY, INC.**

**LOCATION: 470' FNL, 1716' FWL**

**EXISTING ELEV= 4564.8'**

**PROPOSED ELEV= 4567.0'**

**DISTURBANCE= 6.0 ACRES**

**ESTIMATED EARTHWORK:**

**TOPSOIL= 9,680 CY**

**CUT= 12,812 CY**

**FILL= 12,802 CY**

**STOCKPILE:**

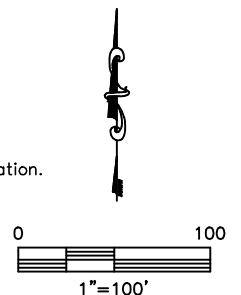
**EXCESS= 10 CY**

### NOTE:

- 1) Ground elevations are based on an observed GPS elevation (NAVD 1988 DATUM).
- 2) No allowance has been made for soil expansion or compaction.
- 3) Proposed elevation does not account for top soil removal.
- 4) Top soil volume assumes 12" depth across entire location.
- 5) Fill slopes 2:1
- 6) Cut slopes 1.5:1

### LEGEND

EX. CONTOUR	---
PRO. CONTOUR	---
FILL AREA	



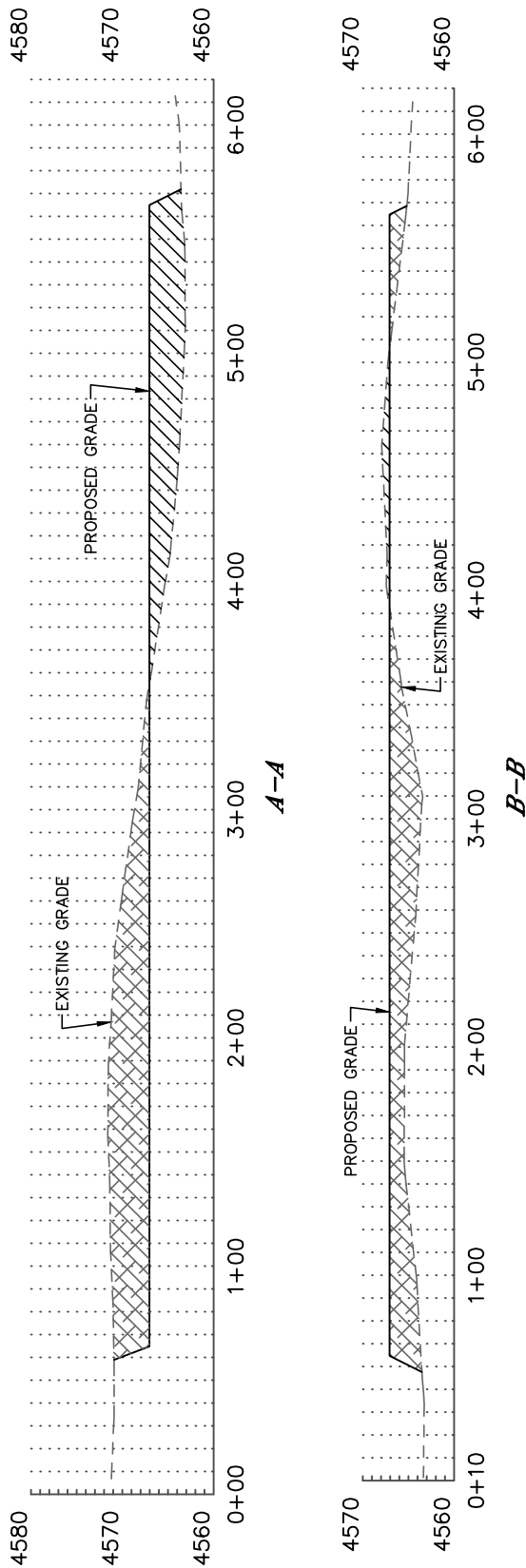
DATE: 2/8/2013  
PROJECT#: 2011349



# CROSS SECTION DIAGRAM

STATE ANTELOPE F-32 PAD

SECTION: 32  
TOWNSHIP: 5N  
RANGE: 62W



HORIZONTAL SCALE: 1"=80', VERTICAL SCALE: 1"=20'