

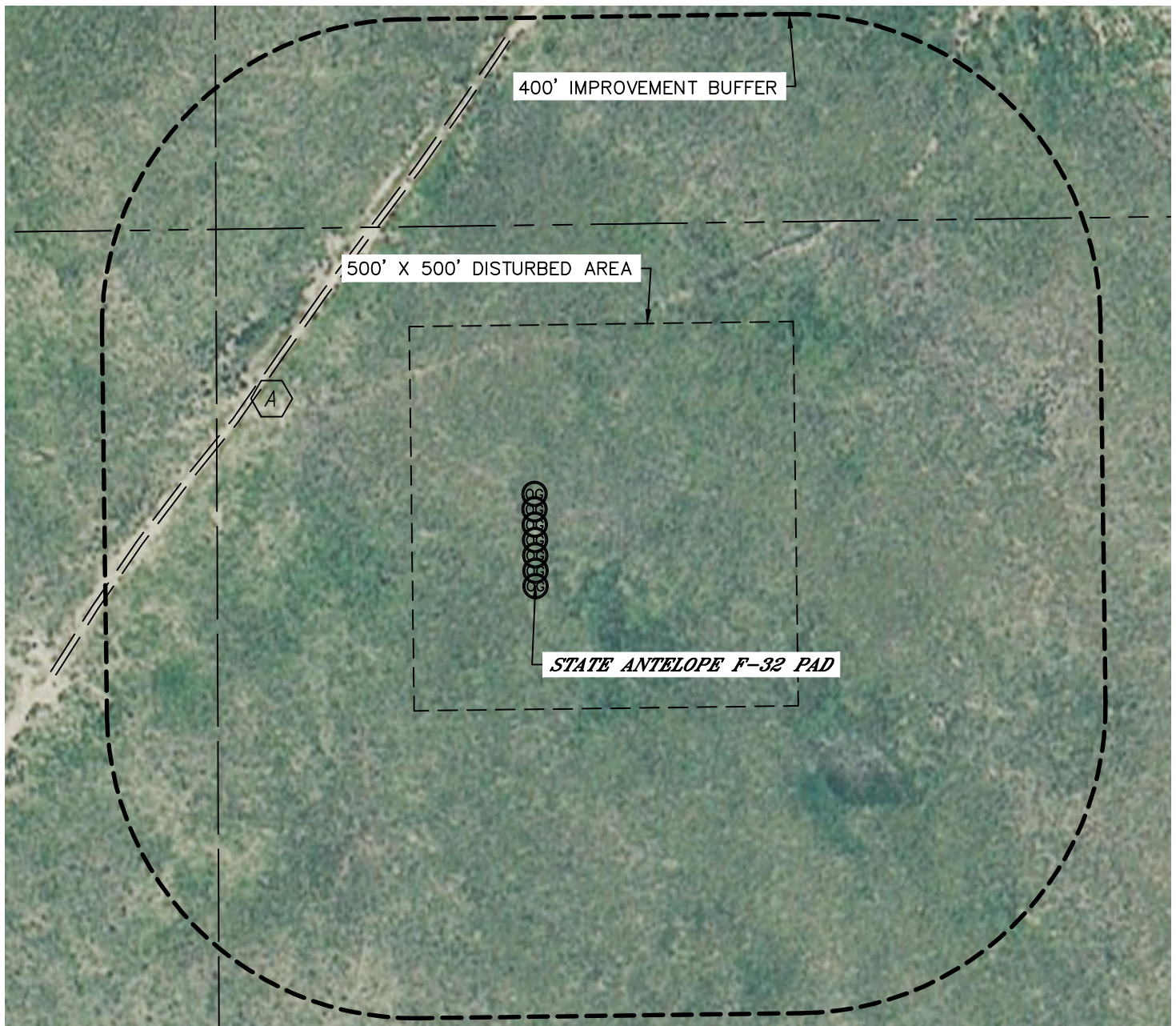


Lat40°, Inc. 1635 Foxtrail Drive, Suite 325 Loveland, CO 970-776-3321

LOCATION DRAWING

STATE ANTELOPE F-32 PAD

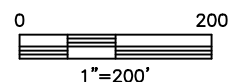
SECTION: 32
TOWNSHIP: 5N
RANGE: 62W



IMPROVEMENTS:
(MEASURED FROM THE PROPOSED STATE ANTELOPE 21-24-32HNB WELL LOCATION)



FIELD ROAD 444' NW



NEAREST: BUILDING 5280'+, PUBLIC ROAD 5280'+,
ABOVE GROUND UTILITY 2915' NE, RAILROAD 5280'+, PROPERTY LINE 470' N

DATE: 2/8/2013
PROJECT#: 2011349