

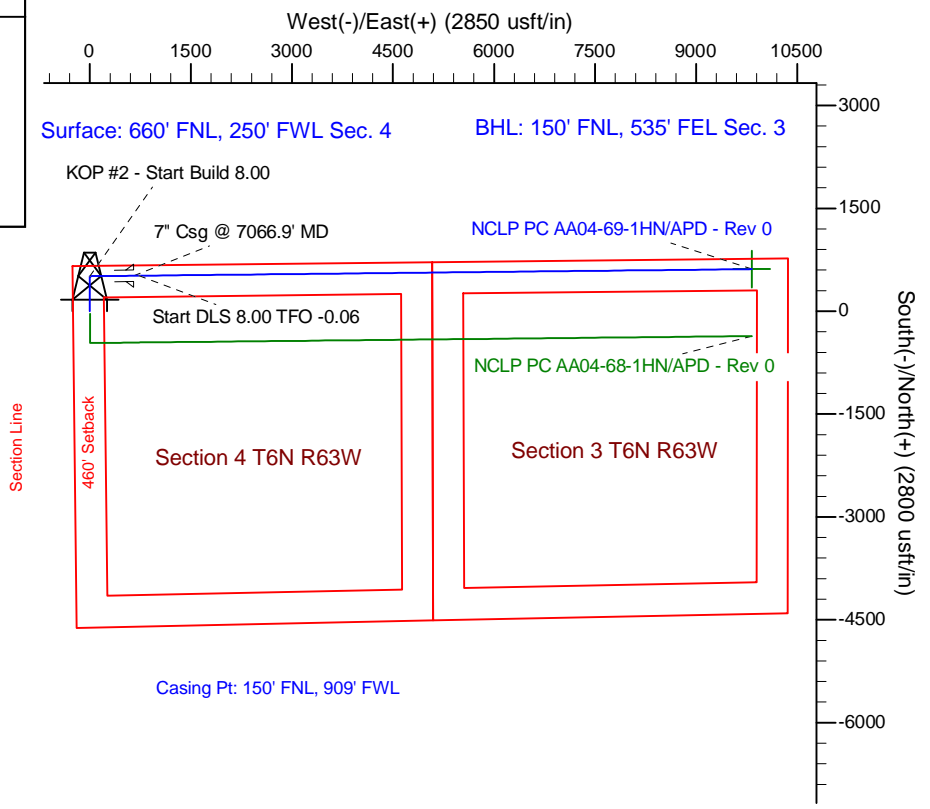
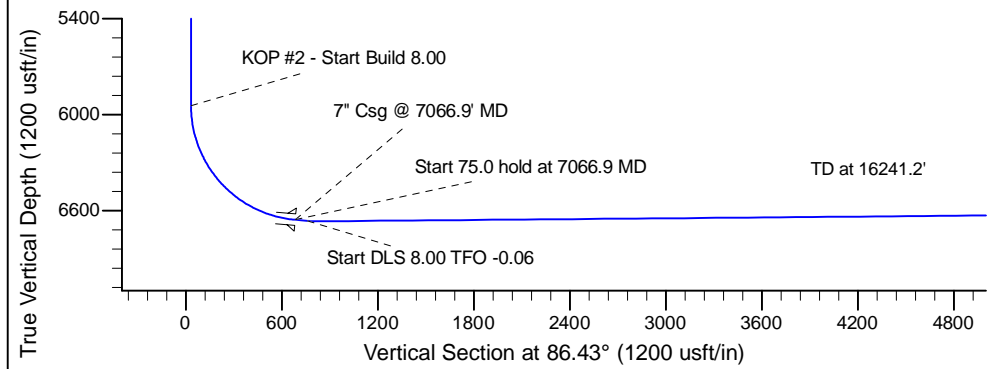
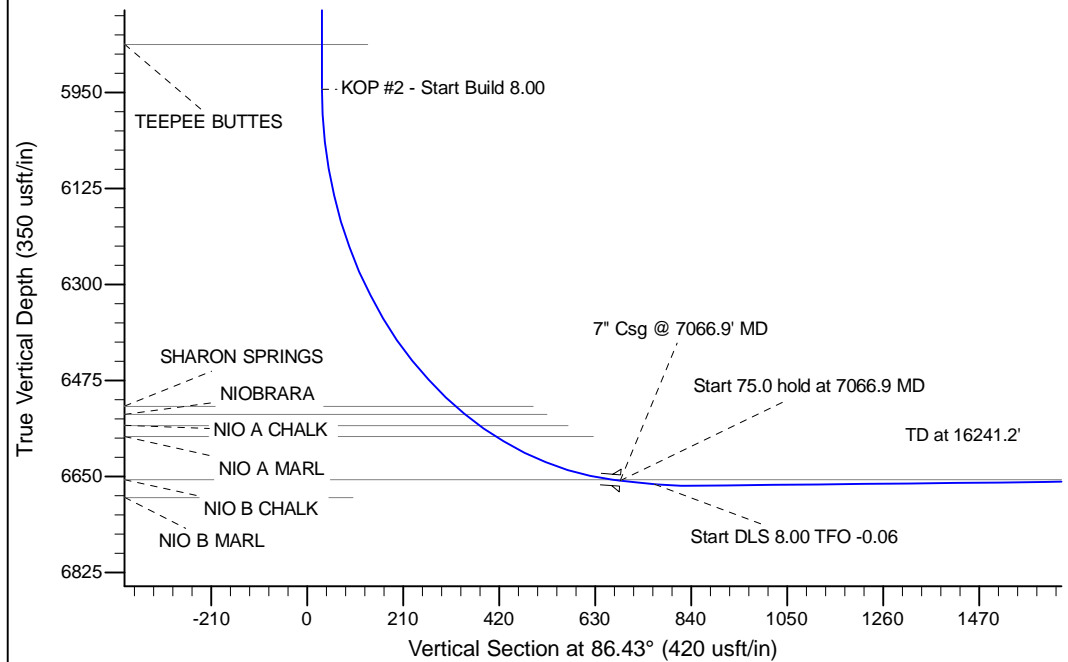
Project: Wattenberg Field
Site: AA (Sec.4-T06N-R63W) Weld County, CO
Well: NCLP PC AA04-69-1HN
Wellbore: Original Drilling
Design: APD - Rev 0

Northern Region Drilling

Geodetic System: US State Plane 1983
Datum: North American Datum 1983
Ellipsoid: GRS 1980
Zone: Colorado Northern Zone
System Datum: Mean Sea Level

SECTION DETAILS

Sec	MD	Inc	Azi	TVD	+N/-S	+E/-W	Dleg	TFace	VSec	Target
1	0.0	0.00	0.00	0.0	0.0	0.0	0.00	0.00	0.0	
2	1500.0	0.00	0.00	1500.0	0.0	0.0	0.00	0.00	0.0	
3	2100.8	15.02	0.00	2093.9	78.3	0.0	2.50	0.00	4.9	
4	3464.5	15.02	0.00	3411.1	431.7	0.0	0.00	0.00	26.9	
5	4065.3	0.00	0.00	4005.0	510.0	0.0	2.50	180.00	31.8	
6	6004.4	0.00	0.00	5944.1	510.0	0.0	0.00	0.00	31.8	
7	7066.9	85.00	89.40	6657.6	516.8	653.7	8.00	89.40	684.7	
8	7141.9	85.00	89.40	6664.1	517.6	728.5	0.00	0.00	759.3	
9	7210.6	90.50	89.39	6666.8	518.4	797.1	8.00	-0.06	827.9	
10	16241.2	90.50	89.39	6588.1	613.8	9826.8	0.00	0.00	9846.0	NCLP PC AA04-69-1HN BHL 150'FNL, 535'FEL



T

G

M

Azimuths to Grid North
True North: -0.68°
Magnetic North: 7.76°

Magnetic Field
Strength: 53087.5snT
Dip Angle: 67.15°
Date: 1/9/2013
Model: IGRF200510

WELL DETAILS: NCLP PC AA04-69-1HN			
Ground Level:	4710.0		
Northing	Easting	Latitude	Longitude
1434437.34	3291817.32	40.521190	-104.450320
Plan: APD - Rev 0 (NCLP PC AA04-69-1HN/Original Drilling)			
Created By: Carrie Willers	Date: 17:40, January 10 2013		
Checked: _____	Date: _____		
Reviewed: _____	Date: _____		
Approved: _____	Date: _____		