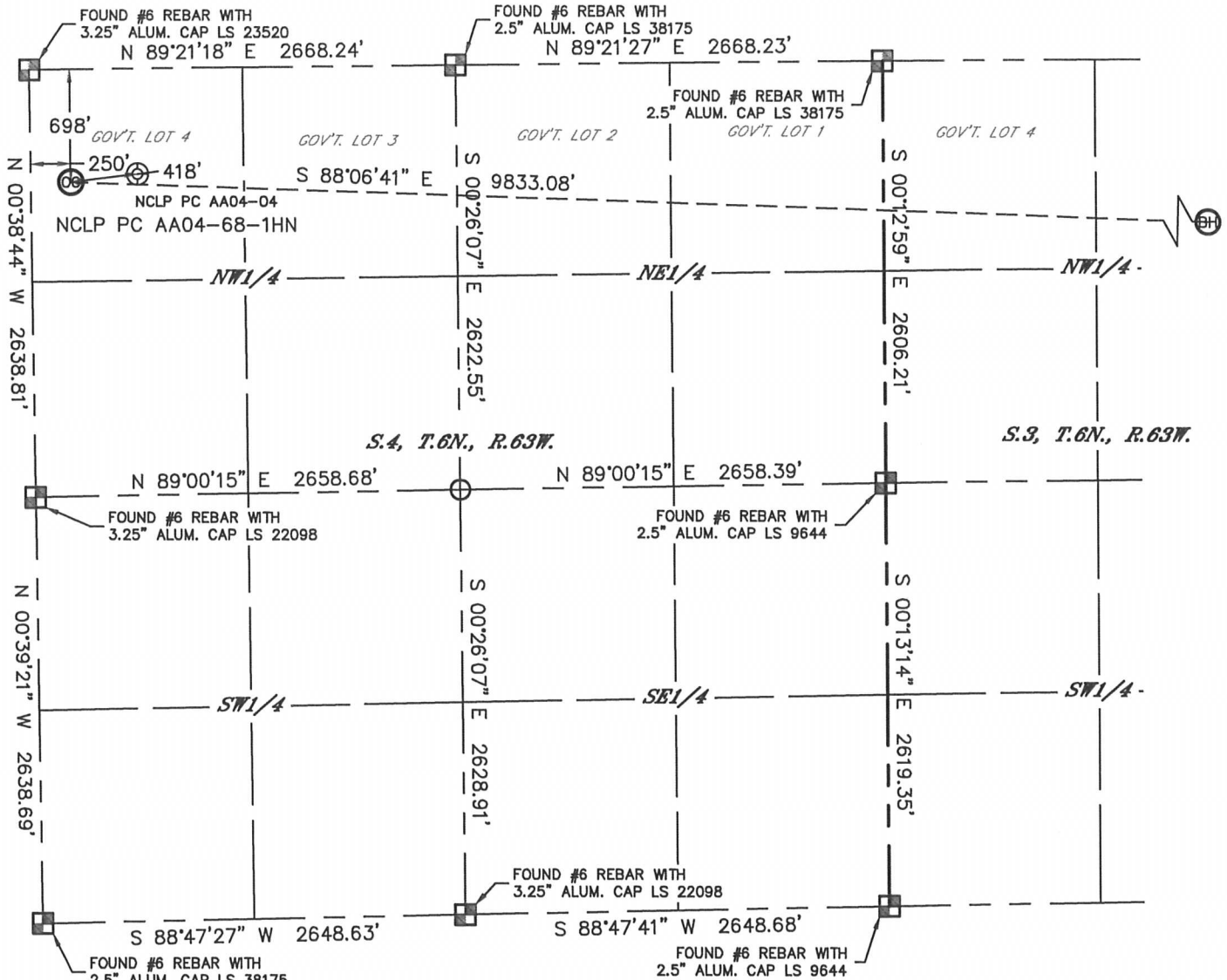


WELL LOCATION CERTIFICATE

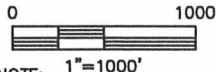
THIS MAP DOES NOT REPRESENT A BOUNDARY SURVEY

SECTION: 4
TOWNSHIP: 6N
RANGE: 63W



In accordance with a request from Greg Wilson with Noble Energy Inc. Lat40°, Inc. has determined the surface location of the NCLP PC AA04-68-1HN to be 698' from the NORTH line and 250' from the WEST line as measured at right angles from the section lines of Section 4, Township 6 North, Range 63 West and the bottom hole to be 1125' from the NORTH line and 535' from the EAST line as measured at right angles from the section lines of Section 3, Township 6 North, Range 63 West of the Sixth Principal Meridian, County of Weld, State of Colorado.

I hereby state that this Well Location Certificate was prepared by me, or under my direct supervision, that the fieldwork was completed on 6/21/2012, for and on behalf of Noble Energy Inc. That this is not a Land Survey Plat or an Improvement Survey Plat, and that it is not to be relied upon for establishment of fence, building, or other future improvement lines.



NOTE: 1"=1000'

- 1) Bearings shown are Grid Bearings of the Colorado State Plane Coordinate System, North Zone, North American Datum 1983/2007. The lineal dimensions as contained herein are based upon the "U.S. Survey Foot."
- 2) Ground elevations are based on an observed GPS elevation (NAVD 1988 DATUM).
- 3) NEAREST EXISTING WELL: NCLP PC AA04-04, 418'
- 4) IMPROVEMENTS: See LOCATION DRAWING for all visible improvements within 400' of disturbed area.
- 5) SURFACE USE: RANGELAND
- 6) INSTRUMENT OPERATOR: ADAM KELLY

SURFACE LOCATION

LAT: 40.52109°N
LONG: 104.45032°W
PDOP: 1.6
ELEV: 4711'
1/4, 1/4: NW1/4NW1/4 (GOV'T LOT 4)
NEAREST PROPERTY LINE: 698' NORTH

BOTTOM HOLE

LAT: 40.51987°N
LONG: 104.41499°W

NOTE

According to Colorado law, you must commence any legal action based upon any defect in this W.L.C. within three years after you discover such defect. In no event, may any action based upon any defect in this survey be commenced more than ten years after the date of the certificate shown hereon. (13-80-105 C.R.S.)

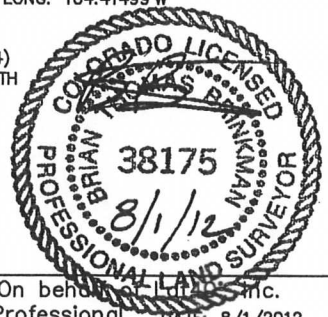
LEGEND

- = ALIQUOT MONUMENT AS DESCRIBED
- = CALCULATED POSITION

SHEET 1 OF 2

Brian T. Brinkman—On behalf of Lat40°, Inc.
Colorado Licensed Professional
Land Surveyor No. 38175

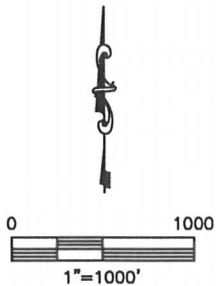
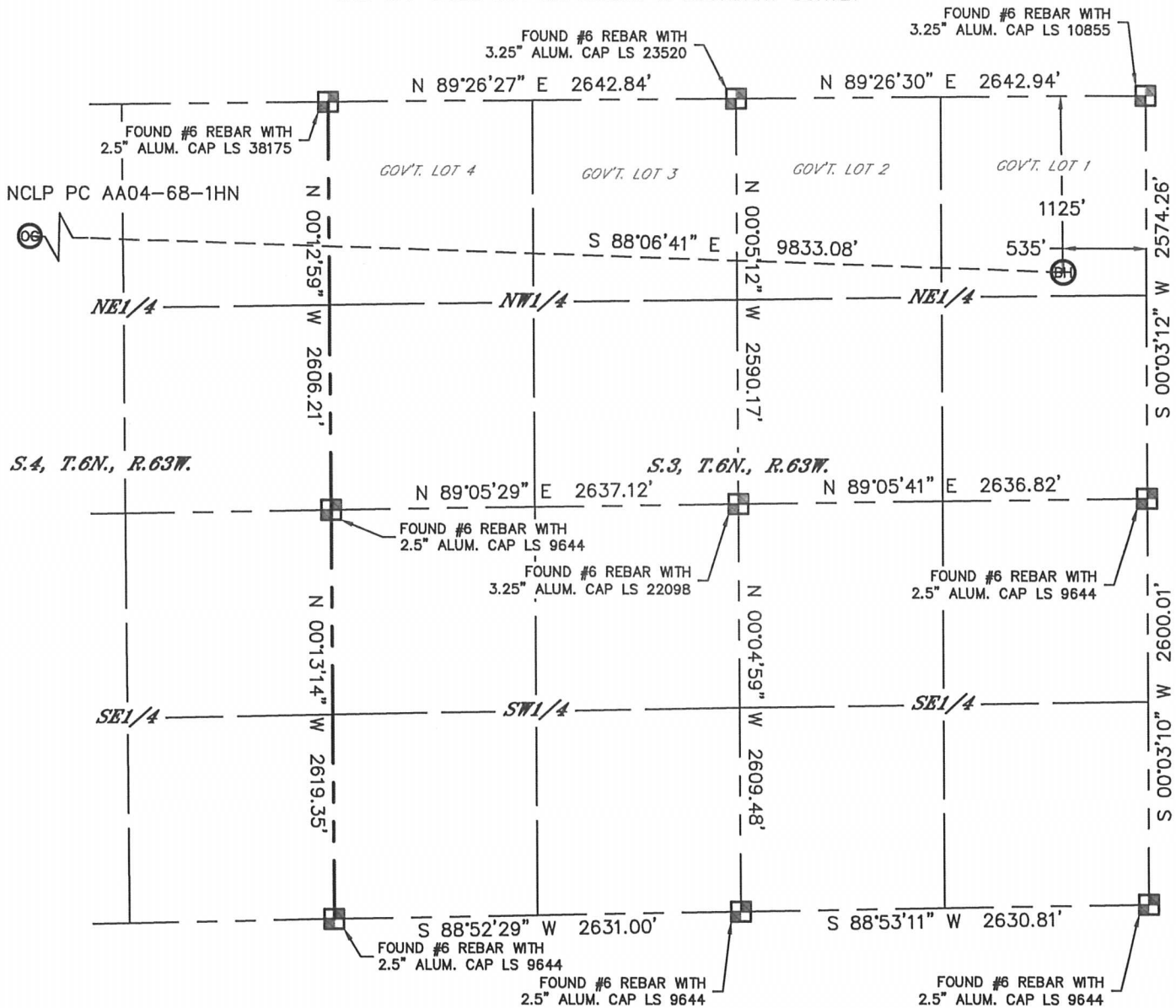
DATE: 8/1/2012
PROJECT#: 2012094



WELL LOCATION CERTIFICATE

THIS MAP DOES NOT REPRESENT A BOUNDARY SURVEY

SECTION: 4
TOWNSHIP: 6N
RANGE: 63W

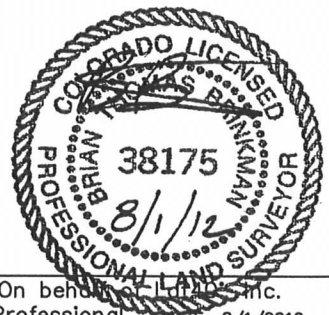


NOTE
According to Colorado law, you must commence any legal action based upon any defect in this W.L.C. within three years after you discover such defect. In no event, may any action based upon any defect in this survey be commenced more than ten years after the date of the certificate shown hereon. (13-80-105 C.R.S.)

- LEGEND**
- = ALIQUOT MONUMENT AS DESCRIBED
 - = CALCULATED POSITION

SHEET 2 OF 2

Brian T. Brinkman—On behalf of Lat40°, Inc.
Colorado Licensed Professional Land Surveyor No. 38175
DATE: 8/1/2012
PROJECT#: 2012094



DATE: 8/1/2012
PROJECT#: 2012094

SITE SKETCH

NCLP PC AA04-68-1HN

SHEET 1 OF 2

SECTION: 4
TOWNSHIP: 6N
RANGE: 63W

①

NCLP PC AA04-05
SW1/4NW1/4
1967' FNL
665' FWL
LAT-40.51760°N
LONG-104.44883°W
PDOP: 2.0
ELEV: 4709'

⑧

NCLP PC AA04-04
NW1/4NW1/4
652' FNL
666' FWL
LAT-40.52121°N
LONG-104.44882°W
PDOP: 2.4
ELEV: 4711'

⑨

NCLP PC AA04-19
NW1/4NW1/4
1290' FNL
1316' FWL
LAT-40.51946°N
LONG-104.44648°W
PDOP: 2.3
ELEV: 4709'

⑩

NCLP PC AA04-06
SE1/4NW1/4
2133' FNL
2162' FWL
LAT-40.51715°N
LONG-104.44345°W
PDOP: 2.2
ELEV: 4709'

⑫

NCLP PC AA04-20
SW1/4NW1/4
2491' FNL
1321' FWL
LAT-40.51617°N
LONG-104.44647°W
PDOP: 1.9
ELEV: 4707'

⑬

CORNISH 21-3
NE1/4NW1/4
473' FNL
1984' FWL
LAT-40.52168°N
LONG-104.42491°W
PDOP: 2.0
ELEV: 4714'

⑰

CORNISH 22-3
SE1/4NW1/4
1776' FNL
1973' FWL
LAT-40.51811°N
LONG-104.42498°W
PDOP: 2.0
ELEV: 4711'

⑱

BUCKCHERRY USX
AA03-02
NW1/4NE1/4
822' FNL
1812' FEL
LAT-40.52071°N
LONG-104.41957°W
PDOP: 2.1
ELEV: 4712'

⑲

CORNISH 12-3
SW1/4NW1/4
1774' FNL
472' FWL
LAT-40.51812°N
LONG-104.43038°W
PDOP: 2.1
ELEV: 4709'

⑳

BROWN USX AA03-7
SW1/4NE1/4
1866' FNL
1819' FEL
LAT-40.51785°N
LONG-104.41965°W
PDOP: 1.6
ELEV: 4707'

㉑

BROWN USX AA03-17
SE1/4NE1/4
1369' FNL
1249' FEL
LAT-40.51921°N
LONG-104.41757°W
PDOP: 1.8
ELEV: 4709'

㉒

BROWN USX AA03-1
NE1/4NE1/4
757' FNL
548' FEL
LAT-40.52088°N
LONG-104.41502°W
PDOP: 1.8
ELEV: 4711'

㉓

BROWN USX AA03-8
SE1/4NE1/4
1979' FNL
660' FEL
LAT-40.51753°N
LONG-104.41548°W
PDOP: 1.6
ELEV: 4708'

⑩③

CORNISH 11-3
NW1/4NW1/4
473' FNL
472' FWL
LAT-40.52169°N
LONG-104.43034°W
PDOP: 2.5
ELEV: 4716'