

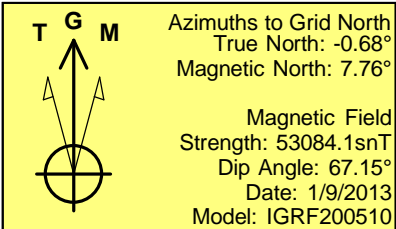
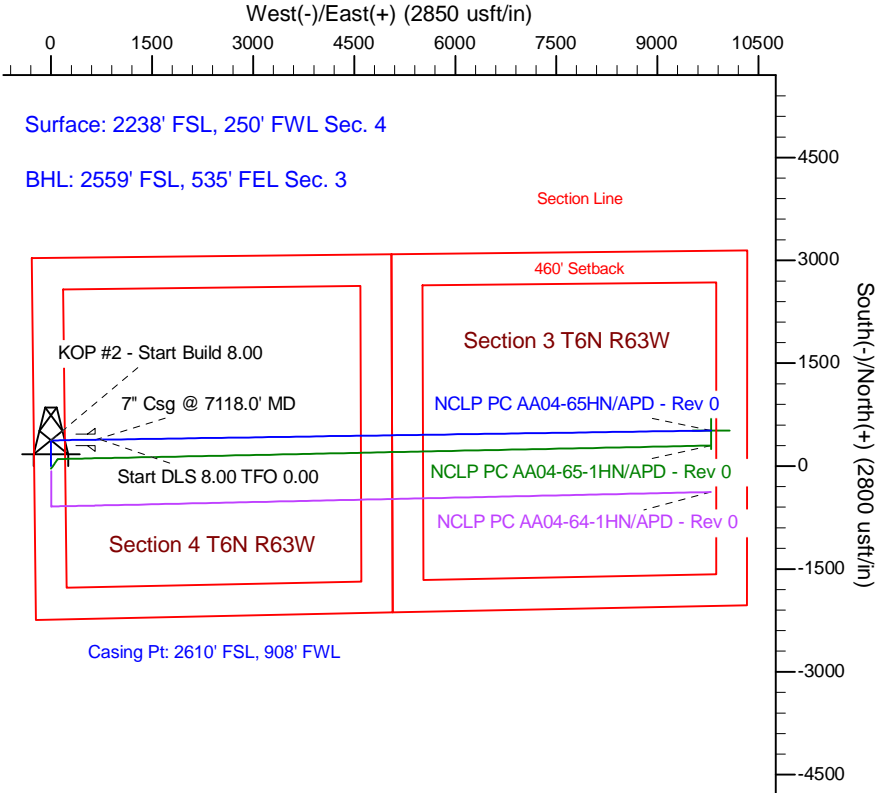
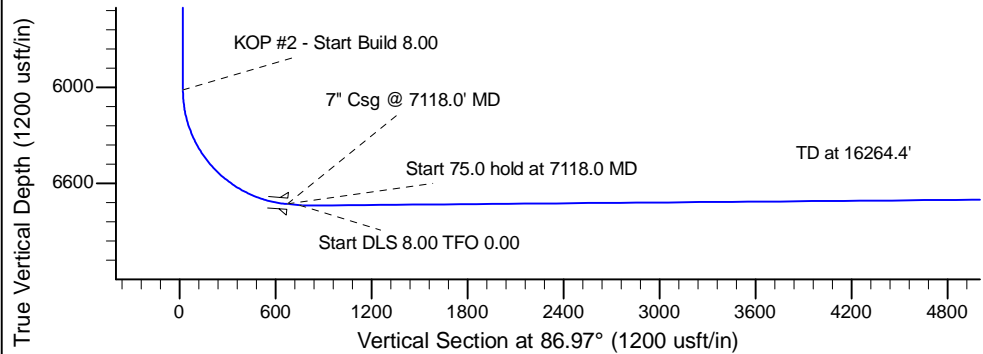
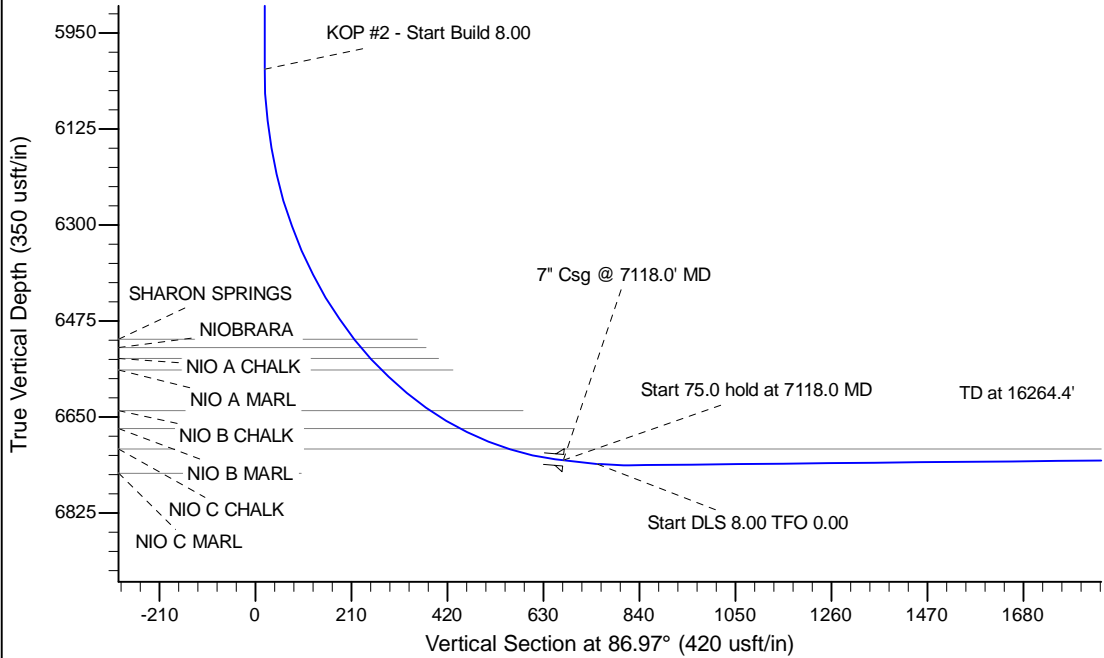
Project: Wattenberg Field  
Site: AA (Sec.4-T06N-R63W) Weld County, CO  
Well: NCLP PC AA04-65HN  
Wellbore: Original Drilling  
Design: APD - Rev 0

# Northern Region Drilling

Geodetic System: US State Plane 1983  
Datum: North American Datum 1983  
Ellipsoid: GRS 1980  
Zone: Colorado Northern Zone  
System Datum: Mean Sea Level

## SECTION DETAILS

Sec	MD	Inc	Azi	TVD	+N/-S	+E/-W	Dleg	TFace	VSec	Target
1	0.0	0.00	0.00	0.0	0.0	0.0	0.00	0.00	0.0	
2	1800.0	0.00	0.00	1800.0	0.0	0.0	0.00	0.00	0.0	
3	2358.2	13.96	0.00	2352.7	67.7	0.0	2.50	0.00	3.6	
4	3352.1	13.96	0.00	3317.3	307.3	0.0	0.00	0.00	16.2	
5	3910.3	0.00	0.00	3870.0	375.0	0.0	2.50	180.00	19.8	
6	6055.5	0.00	0.00	6015.2	375.0	0.0	0.00	0.00	19.8	
7	7118.0	85.00	89.16	6728.6	384.6	653.7	8.00	89.16	673.1	
8	7193.0	85.00	89.16	6735.2	385.7	728.4	0.00	0.00	747.8	
9	7261.7	90.50	89.16	6737.9	386.7	797.1	8.00	0.00	816.4	
10	16264.4	90.50	89.16	6659.4	518.7	9798.4	0.00	0.00	9812.1	NCLP PC AA04-65HN BHL 2559'FSL, 535'FEL



WELL DETAILS: NCLP PC AA04-65HN			
Ground Level:	4711.0	Latitude	40.514670
Northing	1432062.23	Easting	3291845.43
		Longitude	-104.450320
Plan: APD - Rev 0 (NCLP PC AA04-65HN/Original Drilling)			
Created By:	Carrie Willers	Date:	12:05, January 11 2013
Checked:		Date:	
Reviewed:		Date:	
Approved:		Date:	