

Project: Wattenberg Field
Site: AA (Sec.4-T06N-R63W) Weld County, CO
Well: NCLP PC AA04-64-1HN
Wellbore: Original Drilling
Design: APD - Rev 0

Northern Region Drilling

Geodetic System: US State Plane 1983
Datum: North American Datum 1983
Ellipsoid: GRS 1980
Zone: Colorado Northern Zone
System Datum: Mean Sea Level

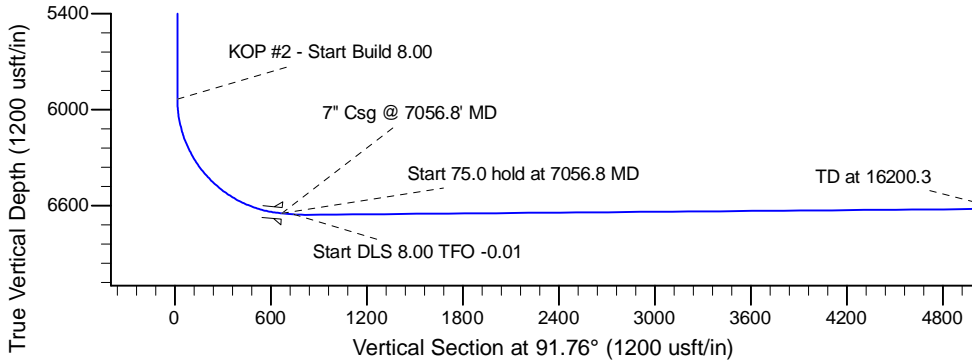
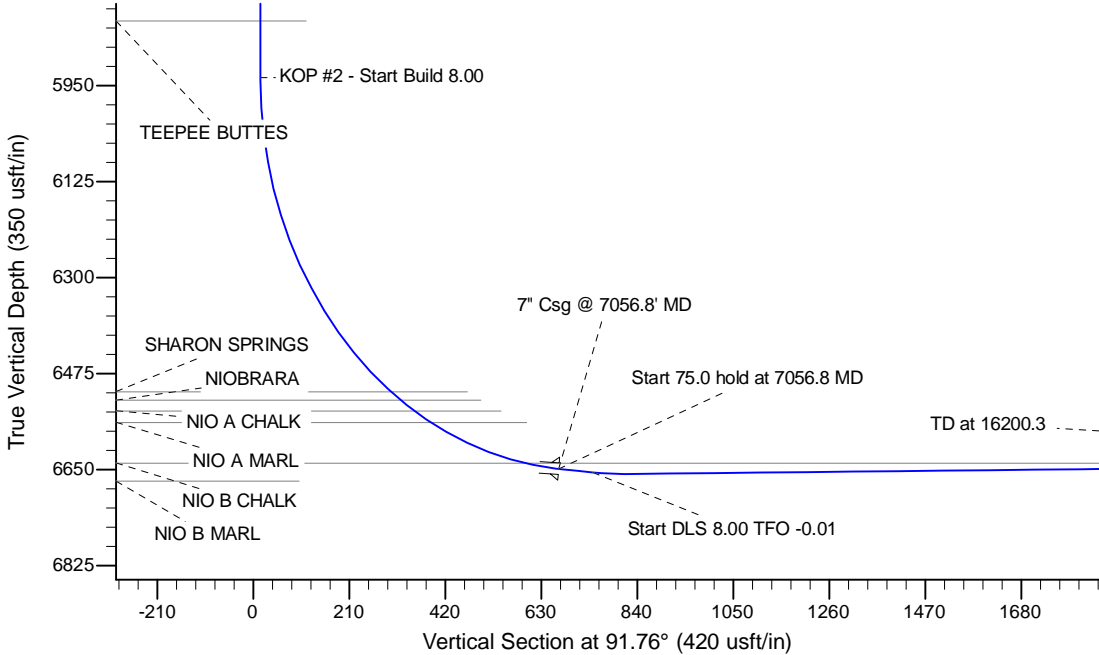
SECTION DETAILS

Sec	MD	Inc	Azi	TVD	+N/-S	+E/-W	Dleg	TFace	VSec	Target
1	0.0	0.00	0.00	0.0	0.0	0.0	0.00	0.00	0.0	
2	1500.0	0.00	0.00	1500.0	0.0	0.0	0.00	0.00	0.0	
3	2100.3	15.01	180.00	2093.5	-78.2	0.0	2.50	180.00	2.4	
4	3439.0	15.01	180.00	3386.5	-424.8	0.0	0.00	0.00	13.1	
5	4039.3	0.00	0.00	3980.0	-503.0	0.0	2.50	180.00	15.5	
6	5994.3	0.00	0.00	5935.0	-503.0	0.0	0.00	0.00	15.5	
7	7056.8	85.00	88.82	6648.4	-489.5	653.6	8.00	88.82	668.4	
8	7131.8	85.00	88.82	6655.0	-488.0	728.3	0.00	0.00	743.0	
9	7200.5	90.50	88.82	6657.7	-486.6	797.0	8.00	-0.01	811.5	
10	16200.3	90.50	88.82	6579.4	-301.1	9794.5	0.00	0.00	9799.2	NCLP PC AA04-64-1HN BHL 1660'FSL, 535'FEL

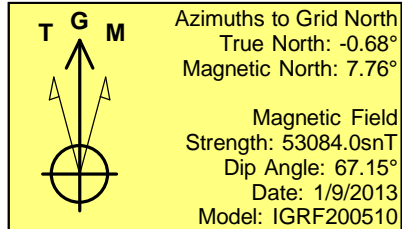
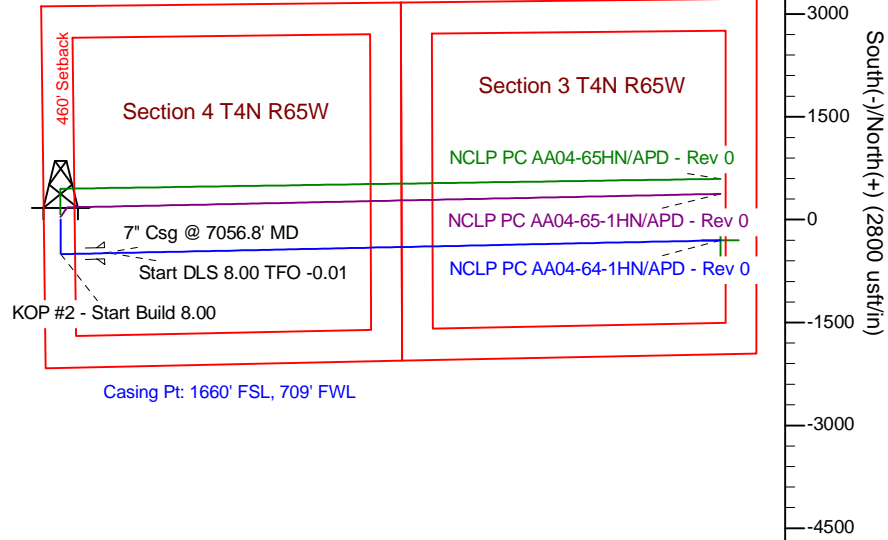
West(-)/East(+) (2850 usft/in)

Surface: 2163' FSL, 250' FWL Sec. 4

BHL: 1660' FSL, 535' FEL Sec. 3



Section Line



WELL DETAILS: NCLP PC AA04-64-1HN			
Ground Level:	4711.0	Latitude	40.514460
Northing	1431985.73	Easting	3291846.34
Longitude	-104.450320		
Plan: APD - Rev 0 (NCLP PC AA04-64-1HN/Original Drilling)			
Created By:	Carrie Willers	Date:	12:36, January 11 2013
Checked:		Date:	
Reviewed:		Date:	
Approved:		Date:	