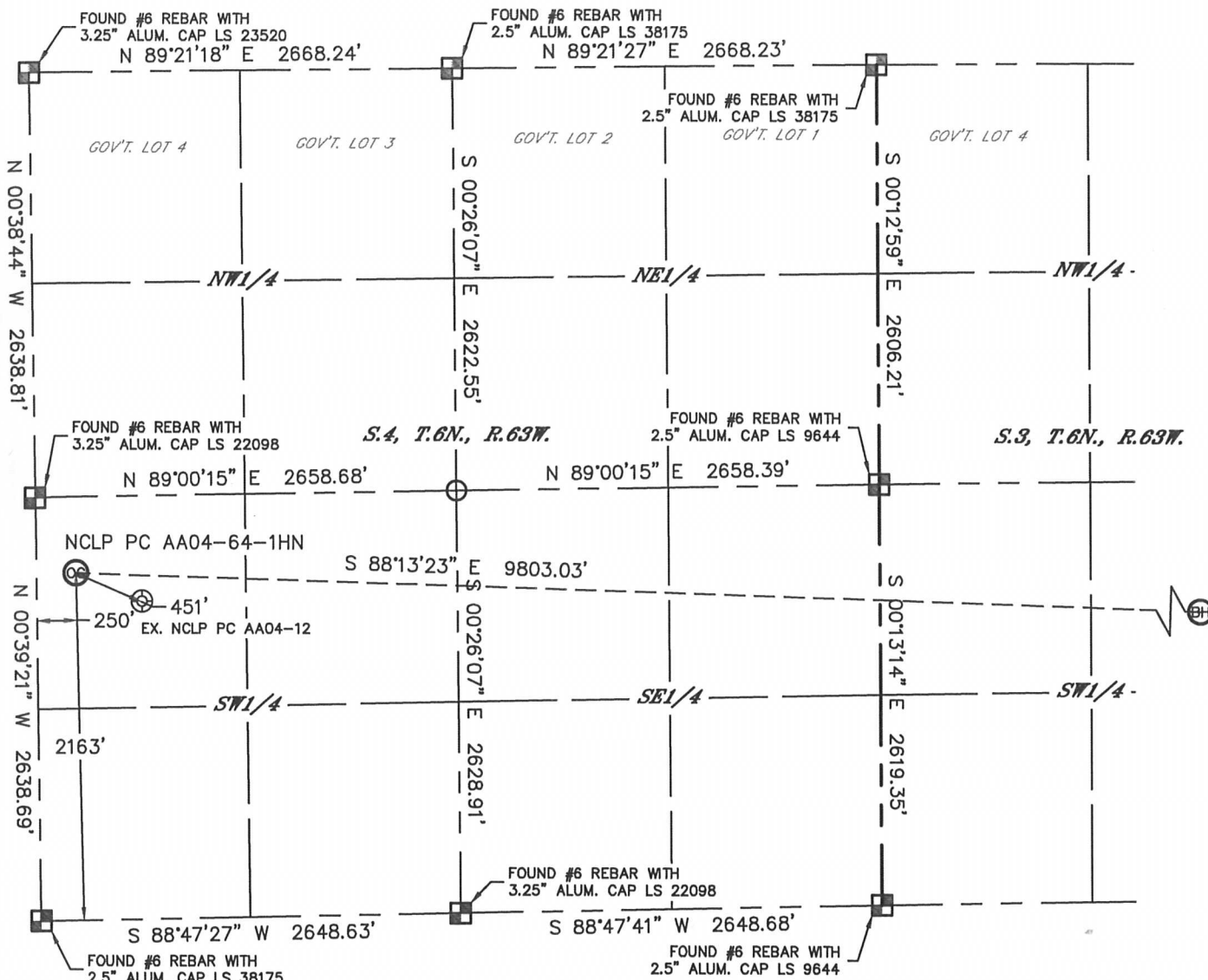


# WELL LOCATION CERTIFICATE

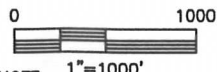
THIS MAP DOES NOT REPRESENT A BOUNDARY SURVEY

SECTION: 4  
TOWNSHIP: 6N  
RANGE: 63W



In accordance with a request from Greg Wilson with Noble Energy Inc., Lat40°, Inc. has determined the surface location of the NCLP PC AA04-64-1HN to be 2163' from the SOUTH line and 250' from the WEST line as measured at right angles from the section lines of Section 4, Township 6 North, Range 63 West and the bottom hole to be 1660' from the SOUTH line and 535' from the EAST line as measured at right angles from the section lines of Section 3, Township 6 North, Range 63 West of the Sixth Principal Meridian, County of Weld, State of Colorado.

I hereby state that this Well Location Certificate was prepared by me, or under my direct supervision, that the fieldwork was completed on 6/21/2012, for and on behalf of Noble Energy Inc.. That this is not a Land Survey Plat or an Improvement Survey Plat, and that it is not to be relied upon for establishment of fence, building, or other future improvement lines.



NOTE:

- 1) Bearings shown are Grid Bearings of the Colorado State Plane Coordinate System, North Zone, North American Datum 1983/2007. The lined dimensions as contained herein are based upon the "U.S. Survey Foot."
- 2) Ground elevations are based on an observed GPS elevation (NAVD 1988 DATUM).
- 3) NEAREST EXISTING WELL: NCLP PC AA04-12, 451'
- 4) IMPROVEMENTS: See LOCATION DRAWING for all visible improvements within 400' of disturbed area.
- 5) SURFACE USE: FALLOW CROP
- 6) INSTRUMENT OPERATOR: ADAM KELLY

## SURFACE LOCATION

LAT: 40.51446°N  
LONG: 104.45032°W  
PDOP: 2.2  
ELEV: 4711'  
1/4, 1/4: NW1/4SW1/4  
NEAREST PROPERTY LINE: 475' NORTH

**BOTTOM HOLE**  
LAT: 40.51331°N  
LONG: 104.41511°W

## NOTE

According to Colorado law, you must commence any legal action based upon any defect in this W.L.C. within three years after you discover such defect. In no event, may any action based upon any defect in this survey be commenced more than ten years after the date of the certificate shown hereon. (13-80-105 C.R.S.)

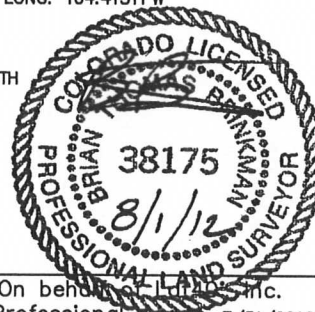
## LEGEND

- = ALIQUOT MONUMENT AS DESCRIBED
- = CALCULATED POSITION

## SHEET 1 OF 2

Brian T. Brinkman—On behalf of Lat40°, Inc.  
Colorado Licensed Professional  
Land Surveyor No. 38175

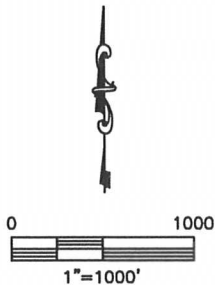
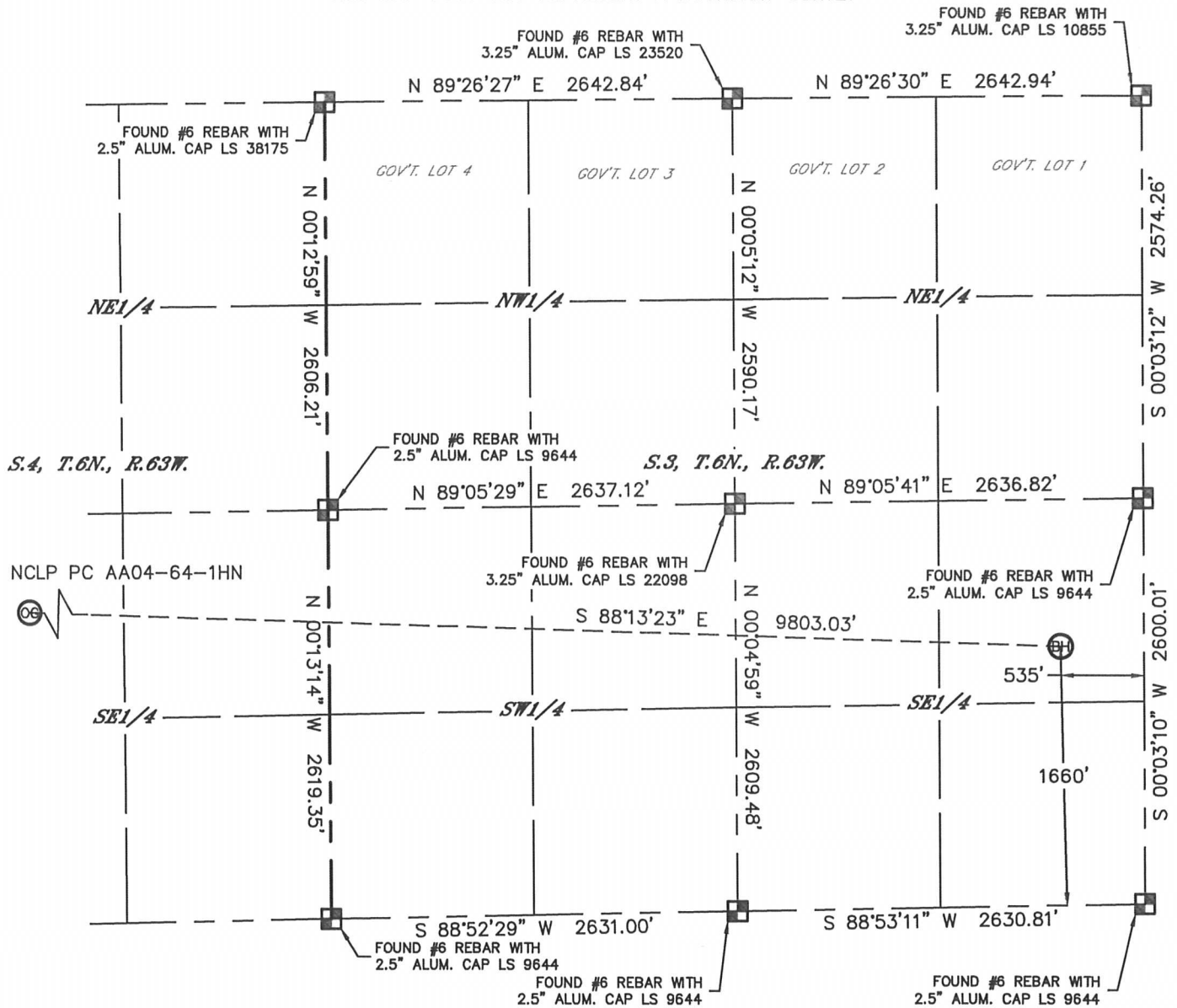
DATE: 7/31/2012  
PROJECT#: 2012094





# WELL LOCATION CERTIFICATE

THIS MAP DOES NOT REPRESENT A BOUNDARY SURVEY

SECTION: 4  
TOWNSHIP: 6N  
RANGE: 63W

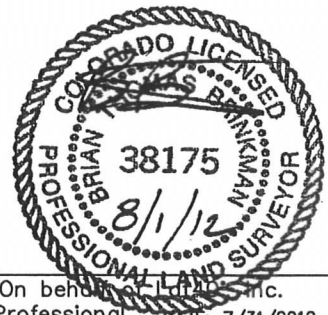


**NOTE**  
According to Colorado law, you must commence any legal action based upon any defect in this W.L.C. within three years after you discover such defect. In no event, may any action based upon any defect in this survey be commenced more than ten years after the date of the certificate shown hereon. (13-80-105 C.R.S.)

- LEGEND**
-  = ALIQUOT MONUMENT AS DESCRIBED
  -  = CALCULATED POSITION

**SHEET 2 OF 2**

Brian T. Brinkman—On behalf of Lat40°, Inc.  
Colorado Licensed Professional Land Surveyor No. 38175  
DATE: 7/31/2012  
PROJECT#: 2012094



SECTION: 4  
TOWNSHIP: 6N  
RANGE: 63W

**SITE SKETCH**  
NCLP PC AA04-64-1HN  
SHEET 2 OF 2

SECTION: 4  
TOWNSHIP: 6N  
RANGE: 63W

③

NCLP PC AA04-13  
SW1/4SW1/4  
660' FSL  
663' FWL  
LAT-40.51035°N  
LONG-104.44884°W  
PDOP: 1.6  
ELEV: 4707'

④

NCLP PC AA04-25  
NE1/4SW1/4  
1319' FSL  
1327' FWL  
LAT-40.51217°N  
LONG-104.44645°W  
PDOP: 1.5  
ELEV: 4703'

⑤

NCLP PC AA04-14  
SE1/4SW1/4  
658' FSL  
1988' FWL  
LAT-40.51038°N  
LONG-104.44408°W  
PDOP: 1.6  
ELEV: 4697'

⑦

NCLP PC AA04-12  
NW1/4SW1/4  
1979' FSL  
664' FWL  
LAT-40.51397°N  
LONG-104.44883°W  
PDOP: 1.8  
ELEV: 4711'

⑪

NCLP PC AA04-11  
NE1/4SW1/4  
1973' FSL  
1992' FWL  
LAT-40.51399°N  
LONG-104.44406°W  
PDOP: 2.2  
ELEV: 4705'

⑫

BROWN USX AA03-14  
SE1/4SW1/4  
673' FSL  
1975' FWL  
LAT-40.51054°N  
LONG-104.42506°W  
PDOP: 2.2  
ELEV: 4700'

⑮

BROWN USX AA03-13  
SW1/4SW1/4  
626' FSL  
685' FWL  
LAT-40.51039°N  
LONG-104.42970°W  
PDOP: 2.2  
ELEV: 4700'

⑰

BROWN USX AA03-25  
SE1/4SW1/4  
1282' FSL  
1346' FWL  
LAT-40.51220°N  
LONG-104.42730°W  
PDOP: 2.1  
ELEV: 4702'

⑳

BROWN USX AA03-11  
NE1/4SW1/4  
1898' FSL  
1964' FWL  
LAT-40.51390°N  
LONG-104.42506°W  
PDOP: 2.1  
ELEV: 4704'

㉑

BROWN USX AA03-10  
NW1/4SE1/4  
2038' FSL  
2028' FEL  
LAT-40.51431°N  
LONG-104.42046°W  
PDOP: 2.1  
ELEV: 4706'

㉒

BROWN USX AA03-9  
NE1/4SE1/4  
1980' FSL  
660' FEL  
LAT-40.51418°N  
LONG-104.41554°W  
PDOP: 1.6  
ELEV: 4714'

㉓

BROWN USX AA03-23  
NE1/4SE1/4  
1303' FSL  
1313' FEL  
LAT-40.51231°N  
LONG-104.41792°W  
PDOP: 1.7  
ELEV: 4713'

㉕

BROWN USX AA03-15  
SW1/4SE1/4  
658' FSL  
1978' FEL  
LAT-40.51053°N  
LONG-104.42034°W  
PDOP: 1.7  
ELEV: 4706'

㉖

BROWN USX AA03-16  
SE1/4SE1/4  
723' FSL  
665' FEL  
LAT-40.51073°N  
LONG-104.41562°W  
PDOP: 1.5  
ELEV: 4740'

㉗

BUCKCHERRY USX  
AA03-12  
NW1/4SW1/4  
1779' FSL  
788' FWL  
LAT-40.51355°N  
LONG-104.42929°W  
PDOP: 1.6  
ELEV: 4701'