

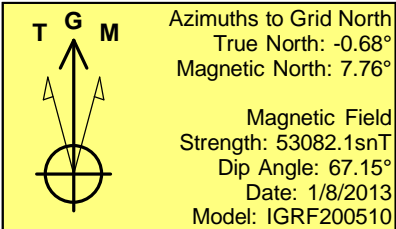
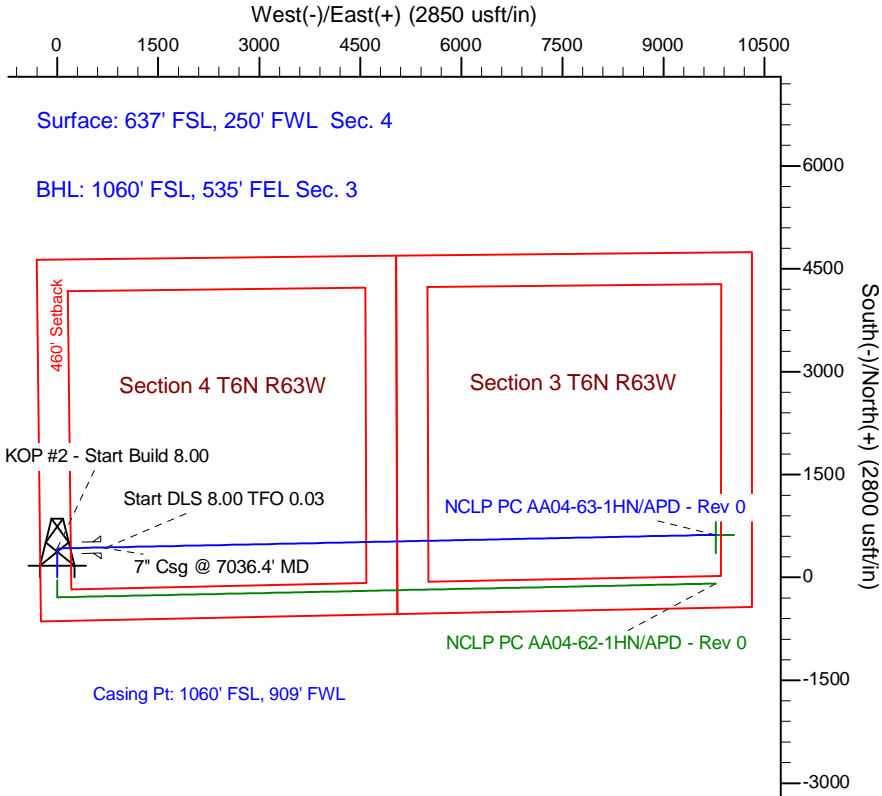
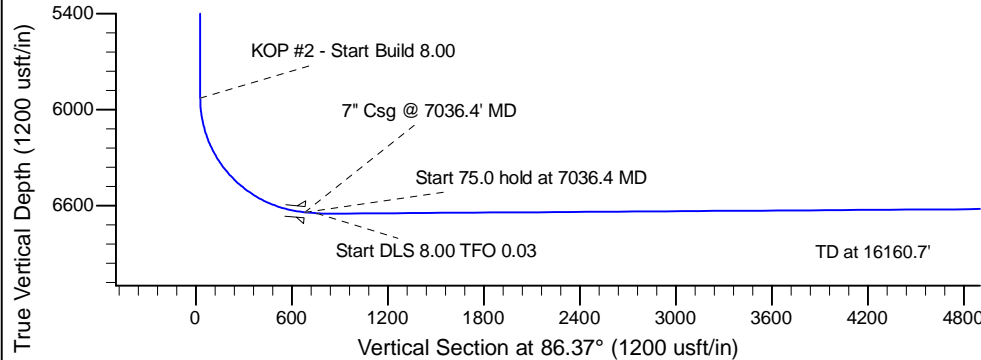
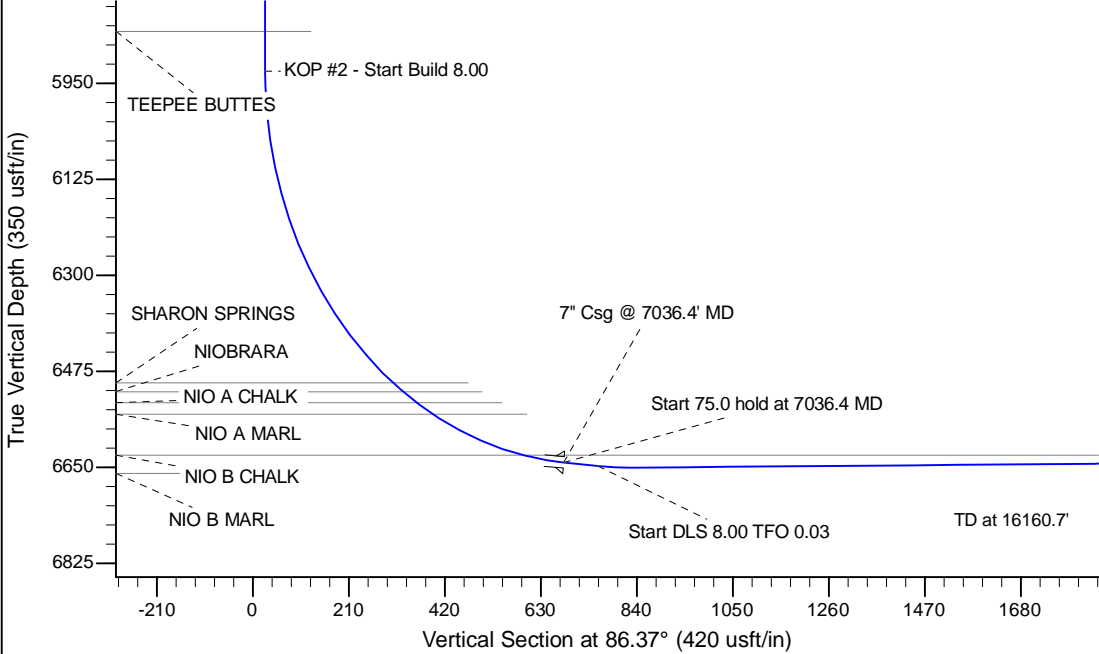
Project: Wattenberg Field  
Site: AA (Sec.4-T06N-R63W) Weld County, CO  
Well: NCLP PC AA04-63-1HN  
Wellbore: Original Drilling  
Design: APD - Rev 0

# Northern Region Drilling

Geodetic System: US State Plane 1983  
Datum: North American Datum 1983  
Ellipsoid: GRS 1980  
Zone: Colorado Northern Zone  
System Datum: Mean Sea Level

## SECTION DETAILS

Sec	MD	Inc	Azi	TVD	+N/-S	+E/-W	Dleg	TFace	VSec	Target
1	0.0	0.00	0.00	0.0	0.0	0.0	0.00	0.00	0.0	
2	1800.0	0.00	0.00	1800.0	0.0	0.0	0.00	0.00	0.0	
3	2359.7	13.99	0.00	2354.2	68.0	0.0	2.50	0.00	4.3	
4	3546.6	13.99	0.00	3505.8	355.0	0.0	0.00	0.00	22.5	
5	4106.3	0.00	0.00	4060.0	423.0	0.0	2.50	180.00	26.8	
6	5973.9	0.00	0.00	5927.6	423.0	0.0	0.00	0.00	26.8	
7	7036.4	85.00	88.84	6641.1	436.2	653.6	8.00	88.84	680.0	
8	7111.4	85.00	88.84	6647.6	437.7	728.3	0.00	0.00	754.6	
9	7178.9	90.40	88.84	6650.3	439.1	795.7	8.00	0.03	822.0	
10	16160.7	90.40	88.84	6587.6	620.5	9775.5	0.00	0.00	9795.2	NCLP PC AA04-63-1HN BHL 1060'FSL, 535'FEL



WELL DETAILS: NCLP PC AA04-63-1HN			
Ground Level:	4710.0	Latitude	40.510280
Northing	1430463.03	Easting	3291864.37
		Longitude	-104.450320
Plan: APD - Rev 0 (NCLP PC AA04-63-1HN/Original Drilling)			
Created By:	Carrie Willers	Date:	17:55, January 09 2013
Checked:		Date:	
Reviewed:		Date:	
Approved:		Date:	