

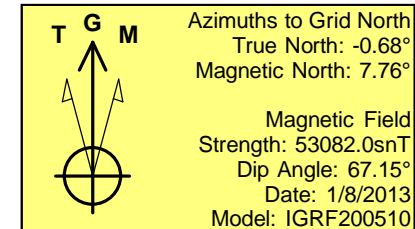
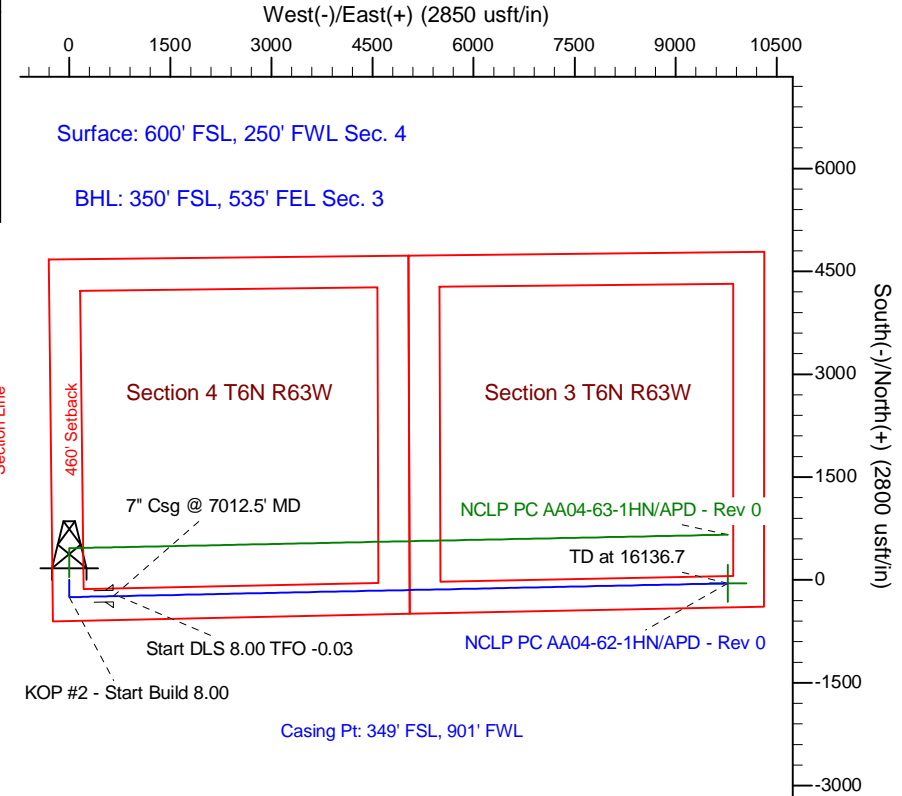
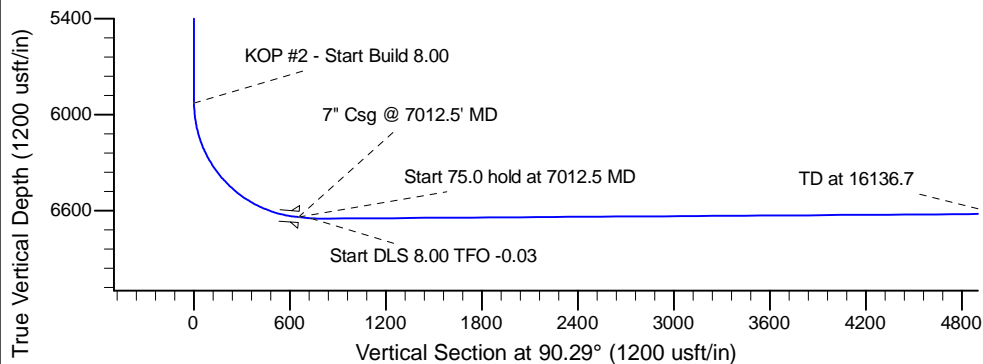
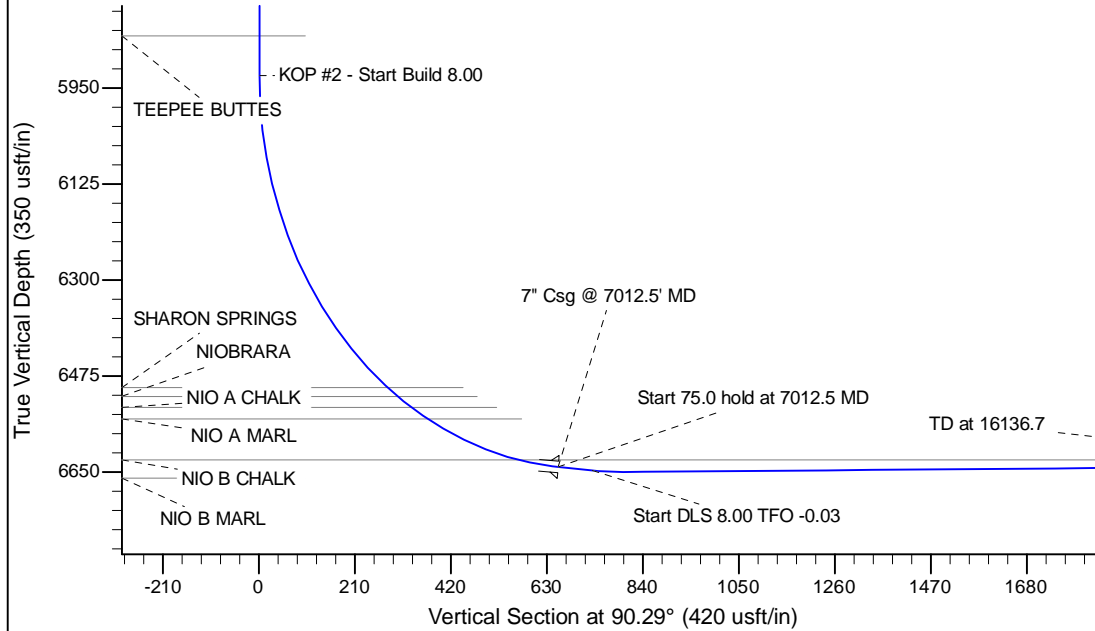
Project: Wattenberg Field
Site: AA (Sec.4-T06N-R63W) Weld County, CO
Well: NCLP PC AA04-62-1HN
Wellbore: Original Drilling
Design: APD - Rev 0

Northern Region Drilling

Geodetic System: US State Plane 1983
Datum: North American Datum 1983
Ellipsoid: GRS 1980
Zone: Colorado Northern Zone
System Datum: Mean Sea Level

SECTION DETAILS

Sec	MD	Inc	Azi	TVD	+N/-S	+E/-W	Dleg	TFace	VSec	Target
1	0.0	0.00	0.00	0.0	0.0	0.0	0.00	0.00	0.0	
2	2000.0	0.00	0.00	2000.0	0.0	0.0	0.00	0.00	0.0	
3	2479.9	12.00	180.00	2476.4	-50.1	0.0	2.50	180.00	0.3	
4	3200.8	12.00	180.00	3181.6	-199.9	0.0	0.00	0.00	1.0	
5	3680.7	0.00	0.00	3658.0	-250.0	0.0	2.50	180.00	1.3	
6	5950.0	0.00	0.00	5927.3	-250.0	0.0	0.00	0.00	1.3	
7	7012.5	85.00	88.83	6640.7	-236.7	653.6	8.00	88.83	654.8	
8	7087.5	85.00	88.83	6647.3	-235.1	728.3	0.00	0.00	729.5	
9	7155.0	90.40	88.83	6650.0	-233.7	795.7	8.00	-0.03	796.9	
10	16136.7	90.40	88.83	6587.7	-49.9	9775.4	0.00	0.00	9775.5	NCLP PC A04-62-1HN BHL 350'FSL, 535'FEL



WELL DETAILS: NCLP PC AA04-62-1HN			
Ground Level:	4710.0	Latitude	40.510170
Northing	1430422.96	Easting	3291864.84
Longitude	-104.450320		
Plan: APD - Rev 0 (NCLP PC AA04-62-1HN/Original Drilling)			
Created By: Carrie Willers	Date: 16:12, January 09 2013		
Checked: _____	Date: _____		
Reviewed: _____	Date: _____		
Approved: _____	Date: _____		