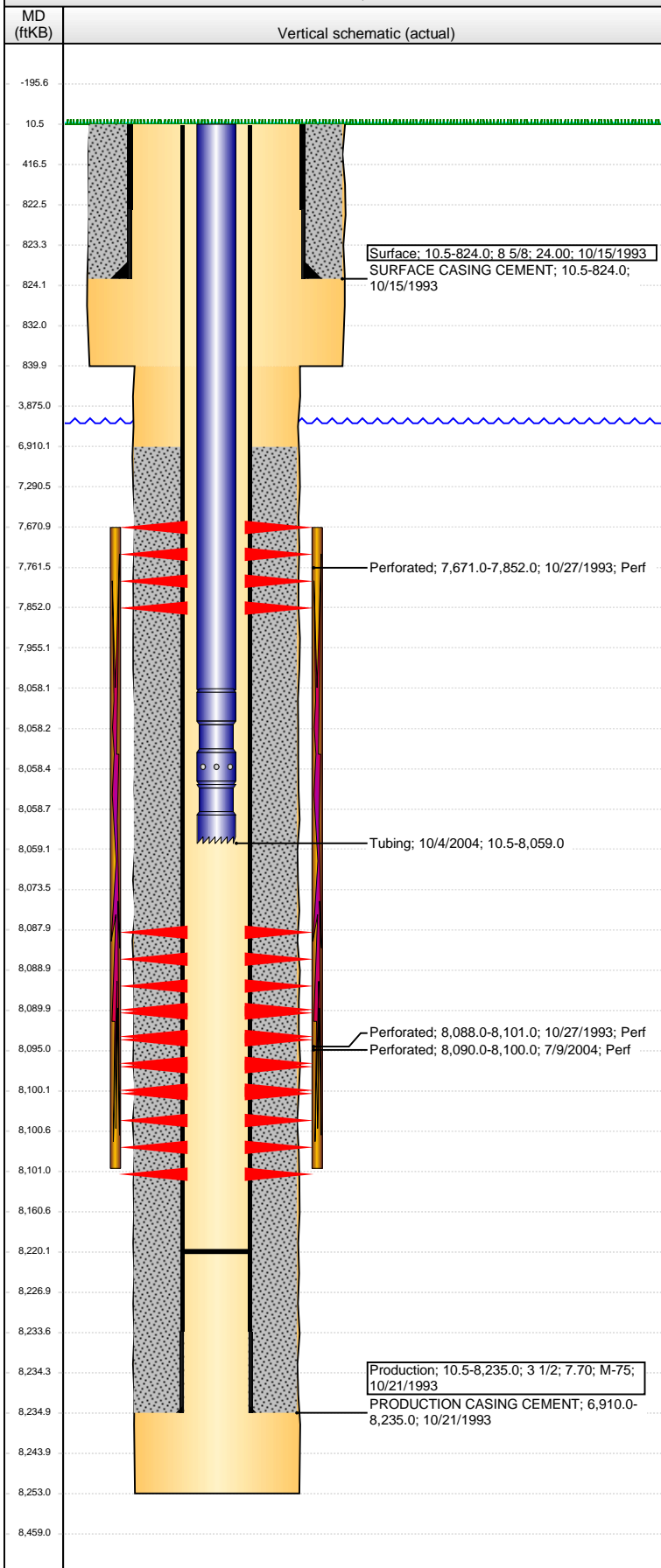


Well Name: GARCIA MD01-12

VERTICAL - ORIGINAL HOLE, 3/26/2013 1:27:25 PM



Well Header									
API 05-013-06448		Business Unit WATTENBERG		District 15		Well Config VERTICAL			
Original KB Elevation (ft) 5,164.50		KB - GL / MSL (ftKB) 10.50		Spud Date 10/14/1993		P & A Date			
Comment REPERF CDL 7/9/04 BUT NO FRAC									
Directions To Well									
Congressional Location									
Quarter 1	Quarter 2	Quarter 3 NW	Quarter 4 SW	Section 1	Township 1	Twonshp N... S	Range 69	Rng E/W Dir W	
Bottom Hole Location									
North-South Distance (ft)			From N or S Line		East-West Distance (ft)			From E or W Line	
Plug Back Total Depths									
Date	Depth (ftKB)		Method			Com			
10/21/1993	8,220.0		TAG						
Wellbore Sections									
Section Des			Size (in)		Act Top (ftKB)		Act Btm (ftKB)		
SURFACE			12 1/4		10.5		840.0		
PRODUCTION			7 7/8		840.0		8,253.0		
Zone Statuses									
Zone Name		Status Date		Status		Job			
NB-CD									
NIOBRARA		12/15/1993		PR		DRILLING/COMPLETION - ORIGINAL, 10/14/1993 00:00			
CODELL		12/15/1993		PR		DRILLING/COMPLETION - ORIGINAL, 10/14/1993 00:00			
Casing Strings									
Surface, 824.0ftKB									
Casing Description Surface		Run Date 10/15/1993		OD (in) 8 5/8	Wt/Len (l... 24.00	Grade 	Top (ftKB) 10.5	MD (ftKB) 824.0	
Production, 8,235.0ftKB									
Casing Description Production		Run Date 10/21/1993		OD (in) 3 1/2	Wt/Len (l... 7.70	Grade M-75	Top (ftKB) 10.5	MD (ftKB) 8,235.0	
Cement									
Description SURFACE CASING CEMENT					Top Depth (ftKB) 10.5		Bottom Depth (ftKB) 824.0		
Description PRODUCTION CASING CEMENT					Top Depth (ftKB) 6,910.0		Bottom Depth (ftKB) 8,235.0		
Tubing Components									
Item Des		OD (in)	Wt (lb/ft)	Grade	Jts	Len (ft)	Btm (ftKB)	Btm (TVD) (ftKB)	
Tubing		1.9	2.75	J-55	245	8,047.55	8,058.1		
Pump Seating		1.9			1	0.47	8,058.5		
Nipple									
Notched collar		1.9			1	0.48	8,059.0		
Perforation Data									
Zone		Bnch/St g	Entered Shot Total	Top (ftKB)		Btm (ftKB)		Date	
NIOBRARA, ORIGINAL HOLE			8	7,671.00		7,852.00		10/27/1993	
CODELL, ORIGINAL HOLE			6	8,088.00		8,101.00		10/27/1993	
CODELL, ORIGINAL HOLE			40	8,090.00		8,100.00		7/9/2004	
Stimulations & Treatments									
Date 10/28/1993		Zone NB-CD, ORIGINAL HOLE			Primary Job Type DRILLING/COMPLETION - ORIGINAL				
Technical Result			Tech Result Details				Tech Result Note		
Comment									
Other In Hole									
Run Date		Des				OD (in)	Top (ftKB)	Btm (ftKB)	
Logs									
Date		Type				Top (ftKB)		Btm (ftKB)	
10/21/1993		COMPENSATED DENSITY				7,300.0		819.0	
10/21/1993		INDUCTION				7,300.0		8,243.0	
10/26/1993		CBL/CCL/GR				6,750.0		8,194.0	
8/30/2012		GYRO				10.0		8,000.0	