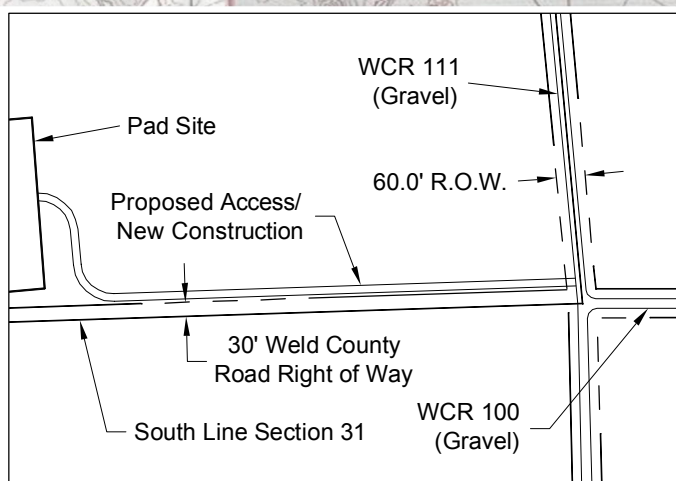
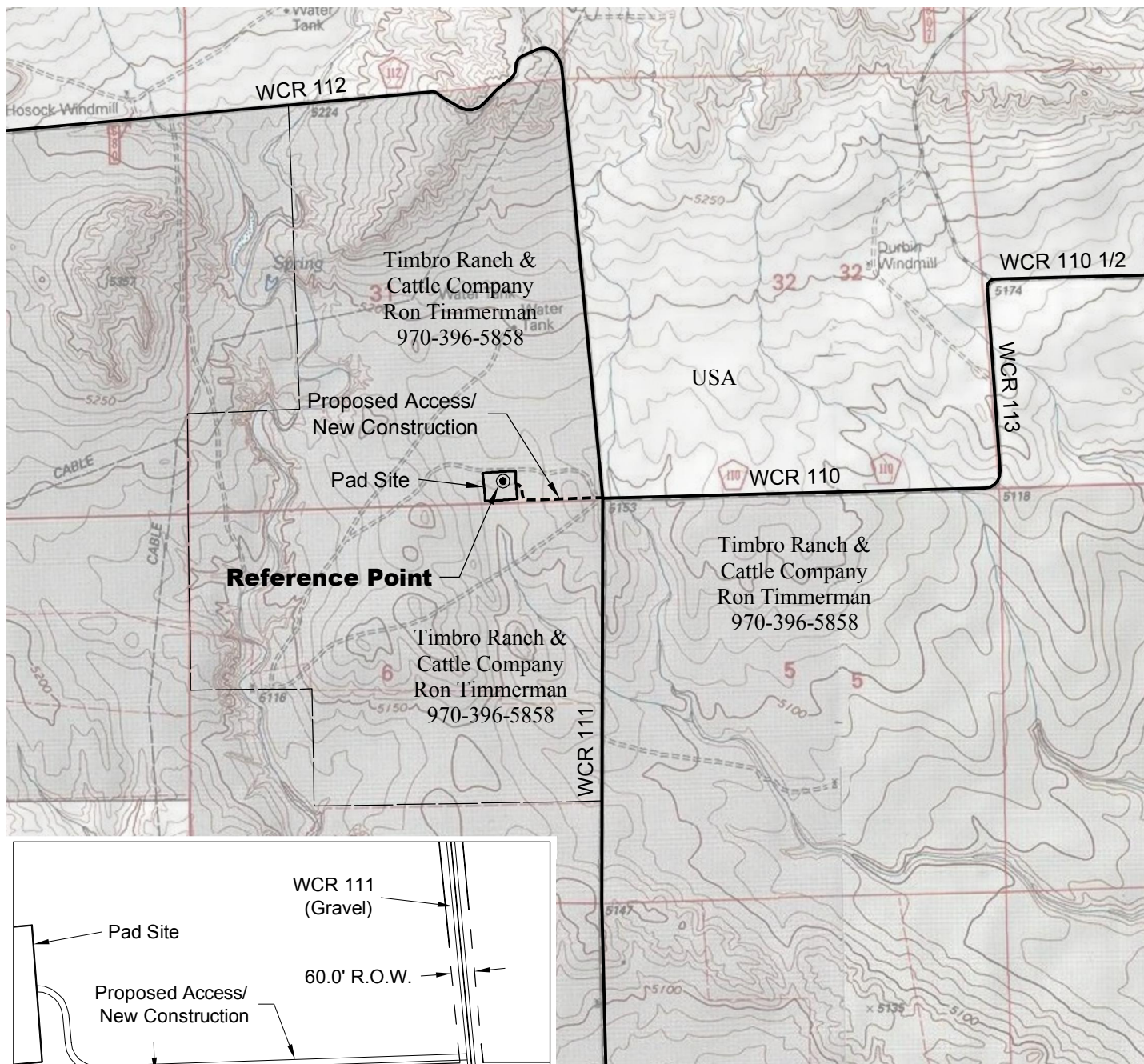
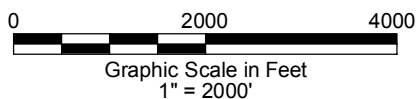


ACCESS ROAD MAP



Access Detail 1"=400'



DRIVING DIRECTIONS:

From Town of Keota, beginning at intersection
of WCR 390 & WCR 103; North on WCR 390
MP 3.5 Right on WCR 104
MP 9.3 Left on WCR 111
MP 12.3 Left on access to Timbro Ranch 1-31-10-59 Pad
MP 12.6 Timbro Ranch 1-31-10-59 Pad

3/14/13



LAND SURVEYING AND MAPPING
LAFAYETTE - WINTER PARK
Ph 303 666 0379 Fx 303 665 6320

CARRIZO NIOBRARA LLC
TIMBRO RANCH 1-31-10-59 PAD

SE1/4 SE1/4 SECTION 31 T10N R59W
6th PM WELD COUNTY COLORADO