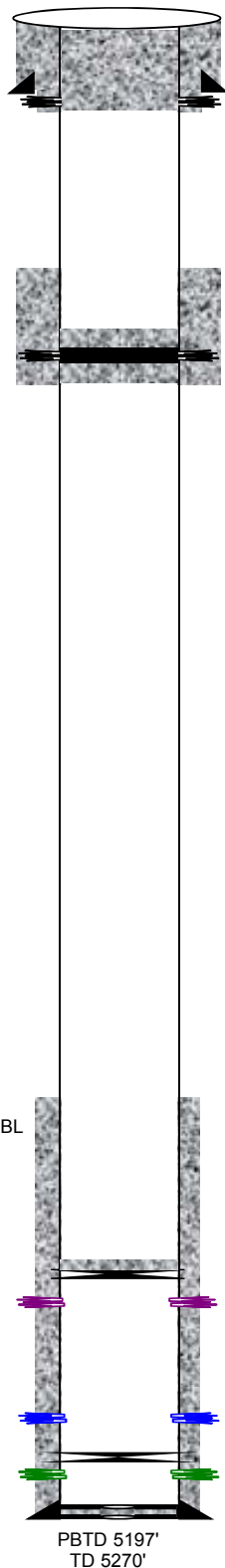




# Black Hills Plateau Production, LLC

A Black Hills Corporation Enterprise



General Well Info				Updated 3/22/13 (jad)	
Well Name:	Gibson 4-3	Field:	Plateau		
Srf Location:	NWNE 3 10S 95W 6PM	County:	Mesa		
Lease # <sub>(BLM)</sub> :	fee	State:	Colorado		
API #:	05-077-08514	Spud Date:	10/30/1982		
GL Elev:	6180'	TD Date:	11/18/1982		
KB Elev:	6190'	Compl Date:	7/22/1983		
Formation Tops					
Zone	Depth	Zone	Depth		
Rollins	4585'				
Cozzette	4925'				
Corcoran	5100'				

## Surface casing (11/1/82):

8 5/8" (7jts) set @ 278' KB (12 1/4" hole)  
210sx Class B – good returns  
TOC @ srf

## Production casing (11/18/82):

4 1/2" 10.5# J55 (120jts) set @ 5256' KB (7 7/8" hole)  
300sx 65/35 Poz  
TOC @ 3840', good bond over pay zone (per completion rpt - CBL ran but not in wellfile) - could not log below 5164'

## Proposed P&A

TIH w/ RBP & pkr. Set RBP as close to top perf (~4550') as possible. Set pkr and test plug. Release pkr. Attempt pressure test csg to 400 psi. Chart test.  
RIH and set 4 1/2" CIBP w/in 100' of top Rollins perf (~4595') and below TOC. Dump bail 2 sx cmt on top of plug.  
Perf 4 circ holes @ 1100' (50' above water aquifer).  
Set cmt retainer @ 1050' (50' above top perf). Pump 45 sx Class III cmt below retainer. Dump 5 sx cmt on top.  
Perf 4 circ holes @ 328'.  
Circ cmt down 4 1/2" and up 8 5/8" surf pipe. Pump 100 sx Class III. Circ cmt to surf. Leave 4 1/2" csg full of cmt.  
Dig out wellhead. Cut off 8 5/8" and 4 1/2" csg 4' below ground level. Install dry hole marker as per COGCC and landowner.

RLNS (5/04/83) 4595, 4597, 4599, 4601, 4602, 4603, 4604, 4609, 4610, 4627, 4628, 4684, 4685'

- (5/04/83) Bullhead w/ 500gal 7 1/2% HCl

Frac w/ 7,560gal fluid, 50,000# 20/40m, 563,830scf N2 (75Q foam)

AIR 5bpm, MIR 8.6bpm, ATP 2800psi, MTP 2900psi, ISIP 2400psi, 5 min 2200psi

COZZ (4/26/83) 4970, 4972, 4974, 4977, 4979, 4990, 4992'

CRCN (4/26/83) 5104, 5106, 5108, 5110, 5112, 5157, 5159, 5174, 5176, 5184, 5186, 5188, 5190'

## COZZ/CRCN Frac'd together

- (4/27/83) Spearhead w/ 1000gal 7 1/2% HCl

Frac w/ 14,238gal fluid, 100,000# 20/40m, 878,776scf N2 (75Q foam)

AIR 8bpm, MIR 13.8bpm, ATP 3100psi, MTP 3800psi, ISIP 3000psi, 2 min 2950psi

CRCN test production (CIBP @ 5060' 7/20/83)