

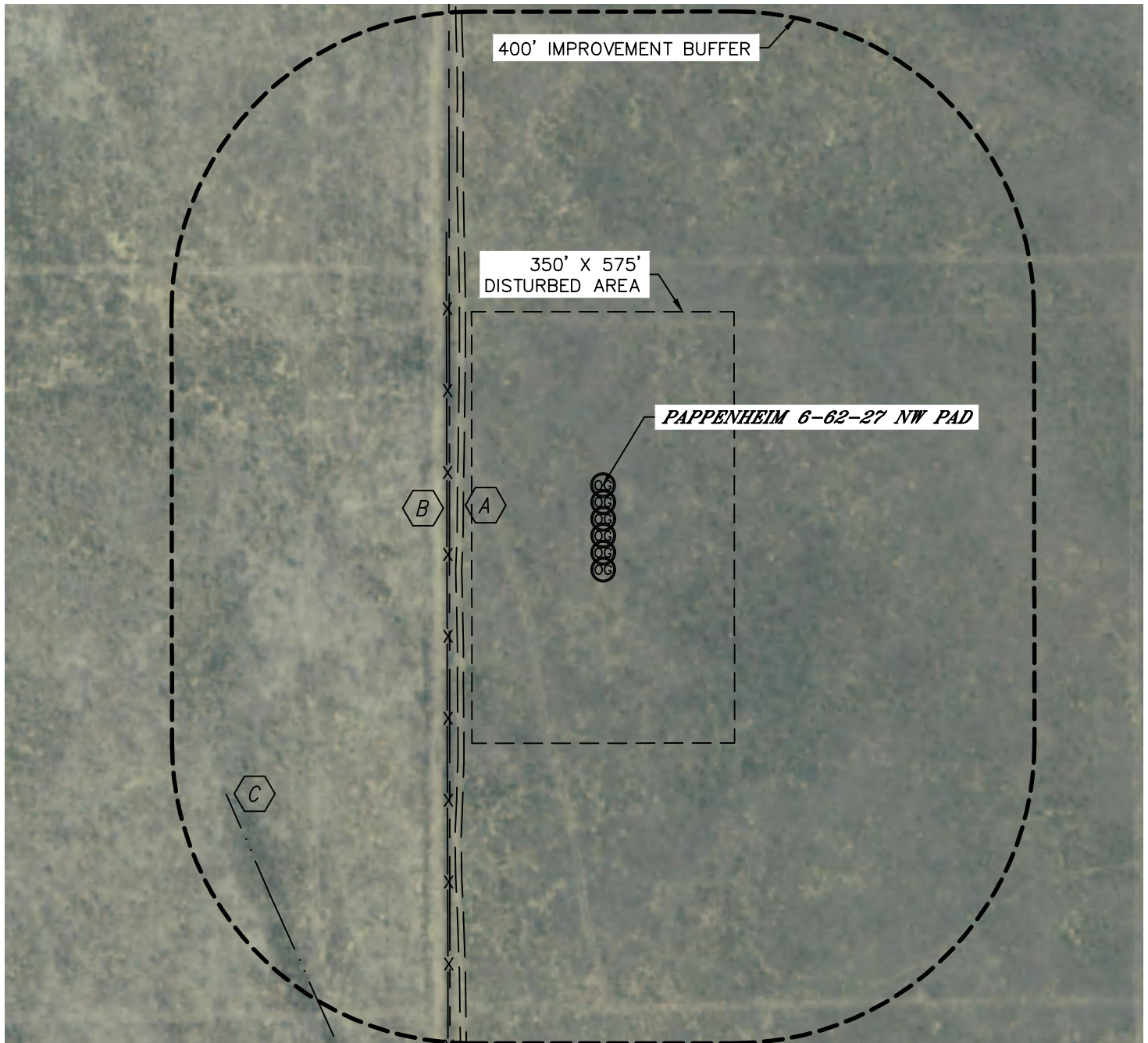


Lat40°, Inc. 1635 Foxtrail Drive, Suite 325 Loveland, CO 970-776-3321

LOCATION DRAWING

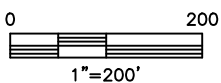
PAPPENHEIM 6-62-27 NW PAD



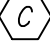
SECTION: 27
TOWNSHIP: 6N
RANGE: 62W



IMPROVEMENTS:

(MEASURED FROM THE PROPOSED PAPPENHEIM 6-62-27-8H WELL LOCATION)



-  ACCESS ROAD 186' W
-  FENCE 208' W
-  SWALE 580' SW
(LOCATION APPROXIMATE, ACCESS NOT PERMITTED)

NEAREST: BUILDING 2400' NE (DWELLING), PUBLIC ROAD ±2450' NE (CR 79.25),
ABOVE GROUND UTILITY 4030' NE, RAILROAD 5280'+, PROPERTY LINE 205' W

DATE: rev 3/22/13
PROJECT#: 2013018

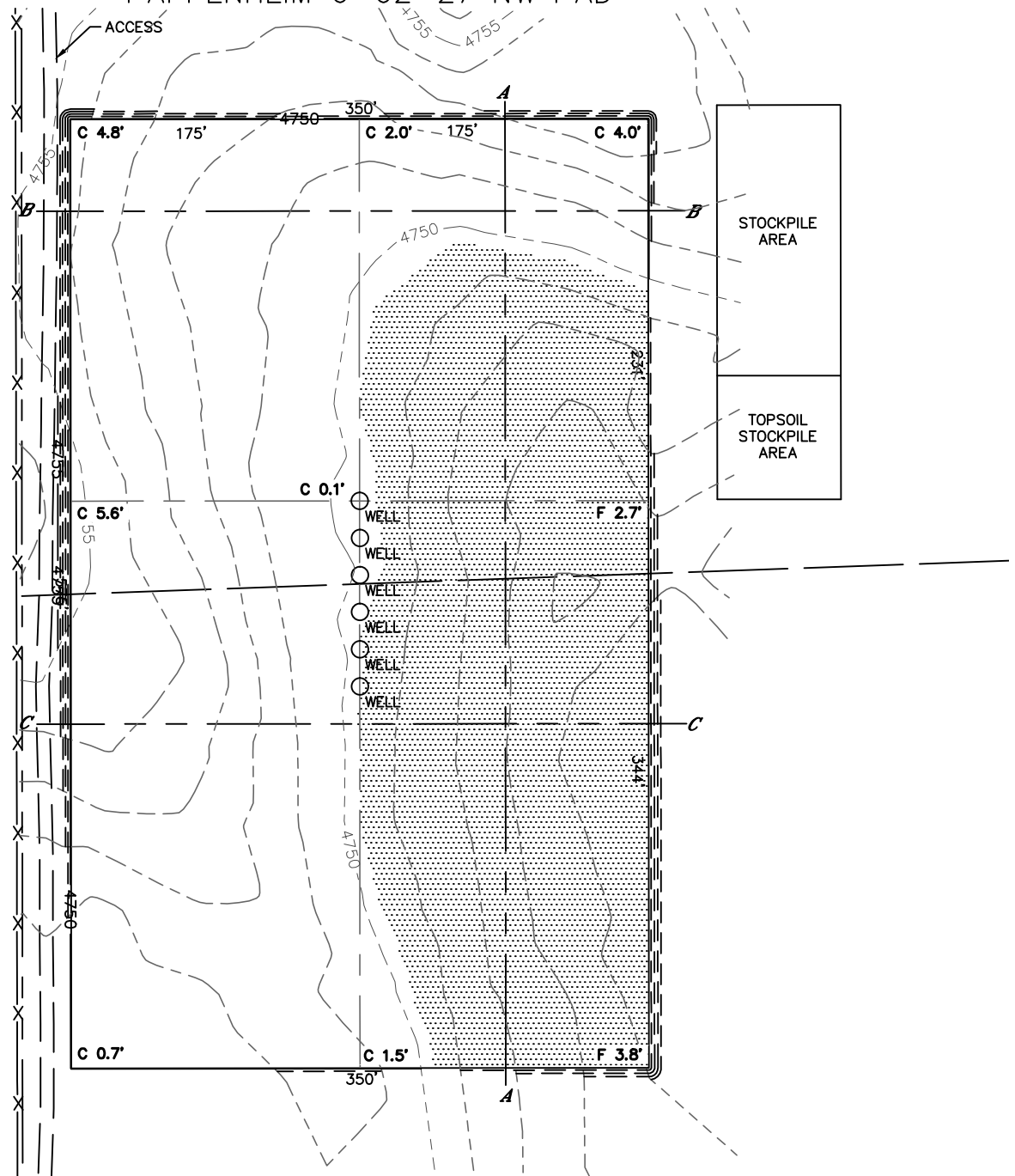


Lat40°, Inc. 1635 Foxtrail Drive, Suite 325 Loveland, CO 970-776-3321

CUT & FILL DIAGRAM

PAPPENHEIM 6-62-27 NW PAD

SECTION: 27
TOWNSHIP: 6N
RANGE: 62W



OPERATOR: BILL BARRETT CORP
LOCATION: 1302' FNL, 205' FWL
EXISTING ELEV= 4749.7'
PROPOSED ELEV= 4749.7'
DISTURBANCE= 4.8 ACRES

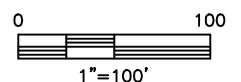
ESTIMATED EARTHWORK:
TOPSOIL= 7,744 CY
CUT= 9,646 CY
FILL= 6,426 CY
STOCKPILE:
EXCESS= 3,220 CY

NOTE:

- 1) Ground elevations are based on an observed GPS elevation (NAVD 1988 DATUM).
- 2) No allowance has been made for soil expansion or compaction.
- 3) Proposed elevation does not account for top soil removal.
- 4) Top soil volume assumes 12" depth across entire location.
- 5) Fill slopes 2:1
- 6) Cut slopes 1.5:1

LEGEND

EX. CONTOUR	---
PRO. CONTOUR	---
FILL AREA	



DATE: 2/22/2013
PROJECT#: 2013018

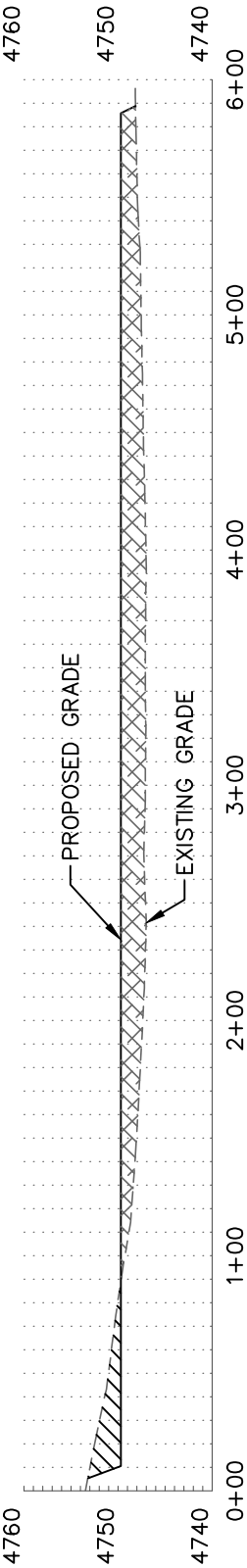


Lat40°, Inc. 1635 Foxtrail Drive, Suite 325 Loveland, CO 970-776-3321

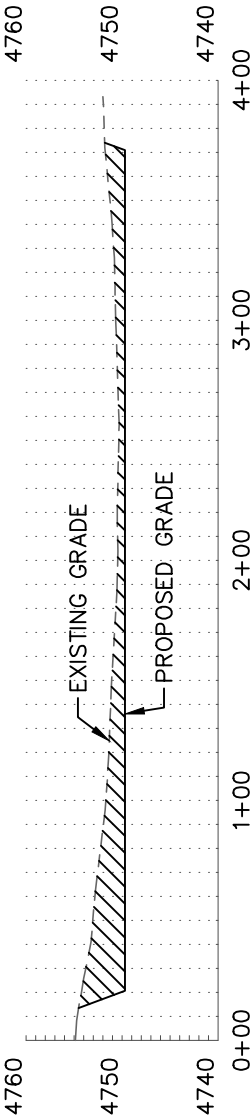
CROSS SECTION DIAGRAM

PAPPENHEIM 6-62-27 NW PAD

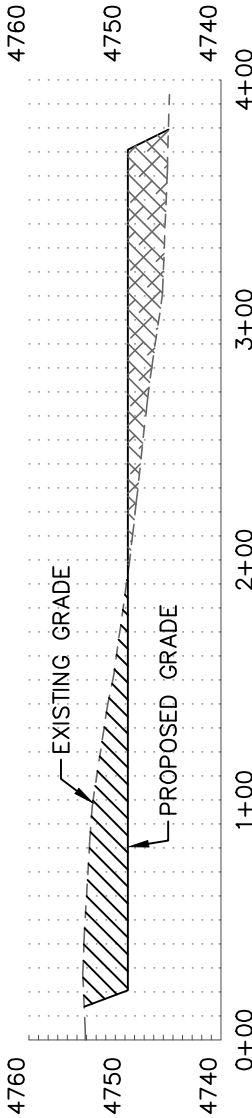
SECTION: 27
TOWNSHIP: 6N
RANGE: 62W



A-A



B-B



C-C

HORIZONTAL SCALE: 1"=80', VERTICAL SCALE: 1"=20'