

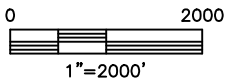
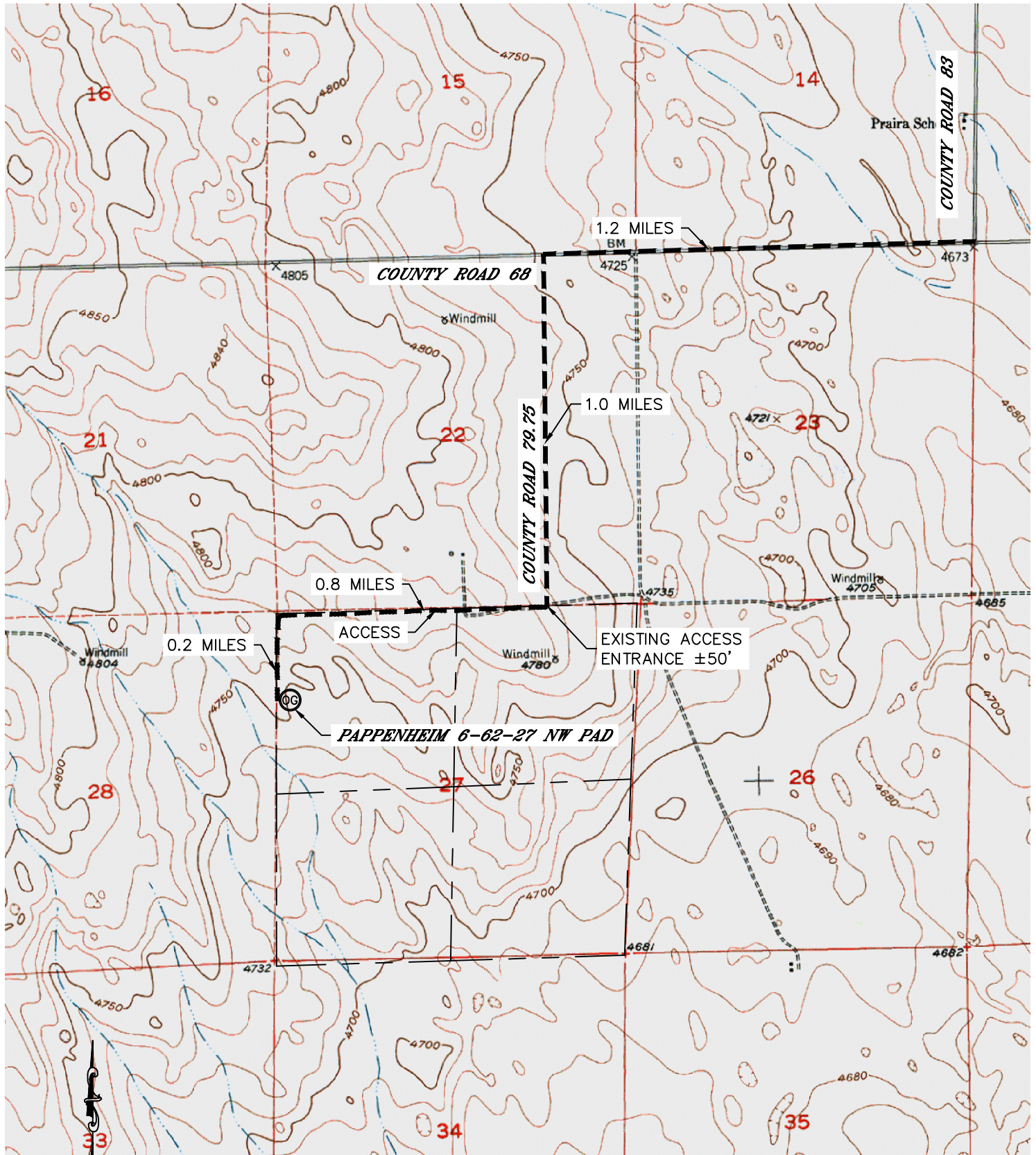


Lat40°, Inc. 1635 Foxtrail Drive, Suite 325 Loveland, CO 970-776-3321

# ACCESS ROAD MAP-A

PAPPENHEIM 6-62-27 NW PAD

SECTION: 27  
TOWNSHIP: 6N  
RANGE: 62W



**DIRECTIONS:**  
FROM THE INTERSECTION OF COUNTY ROAD 83 AND COUNTY ROAD 68 GO WEST 1.2 MILES TO COUNTY ROAD 79.75. THENCE SOUTH ON COUNTY ROAD 79.75 1.0 MILES TO AN EXISTING ACCESS ROAD TO THE WEST. GO WEST ON SAID ACCESS ROAD 0.8 MILES, THENCE SOUTH ON SAID ACCESS ROAD 0.2 MILES TO THE PROPOSED WELL PAD.

DATE: 2/22/2013  
PROJECT#: 2013018

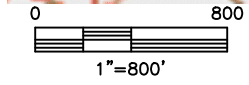
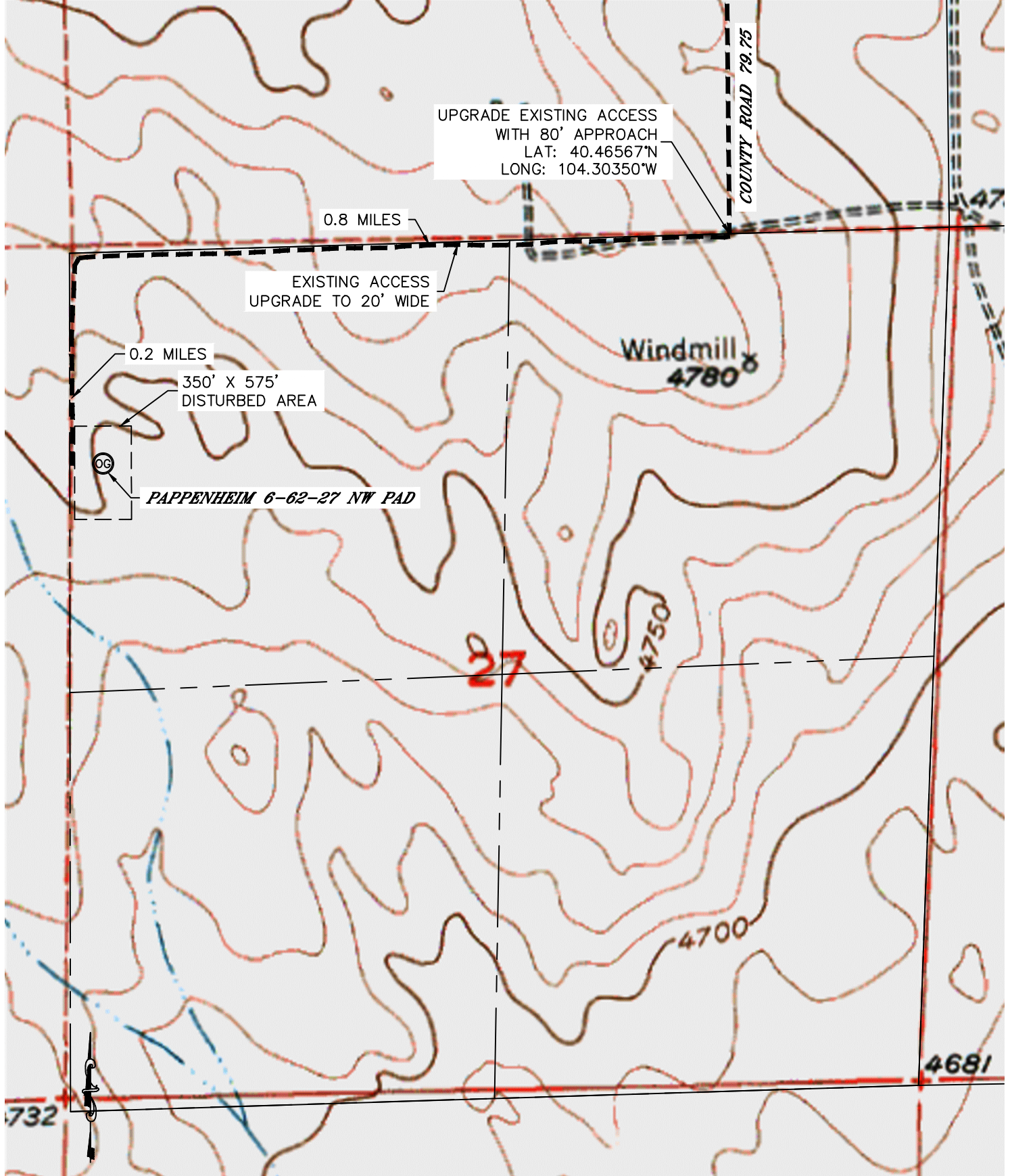


Lat40°, Inc. 1635 Foxtrail Drive, Suite 325 Loveland, CO 970-776-3321

# ACCESS ROAD MAP-B

## PAPPENHEIM 6-62-27 NW PAD

SECTION: 27  
TOWNSHIP: 6N  
RANGE: 62W



PROPOSED PERMANENT ACCESS WILL BE A CLAY BASE WITH A 1.5" GRAVEL TOP 20' WIDE BUILT TO BLM GOLD BOOK STANDARDS. THE MAXIMUM GRADE WILL NOT EXCEED 6%.  
NO CULVERTS EXISTING OR PROPOSED.

DATE: 2/22/2013  
PROJECT#: 2013018



Lat40°, Inc. 1635 Foxtrail Drive, Suite 325 Loveland, CO 970-776-3321

# ACCESS PICTURES

PAPPENHEIM 6-62-27 NW PAD

SECTION: 27  
TOWNSHIP: 6N  
RANGE: 62W

DATE: 2/11/2013



VIEW NORTH (CR 79.75)



VIEW SOUTH