

Project: Wattenberg Field
Site: AE (Sec.20-T06N-R62W) Weld County, CO
Well: Wells Ranch AE20-65HN
Wellbore: Original Drilling
Design: APD - Rev 0

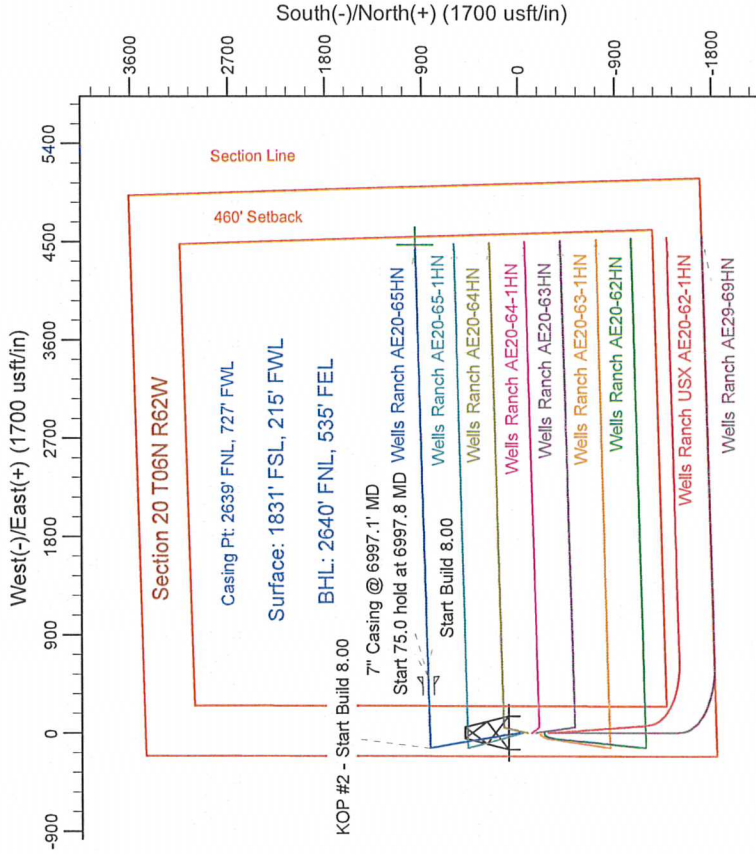
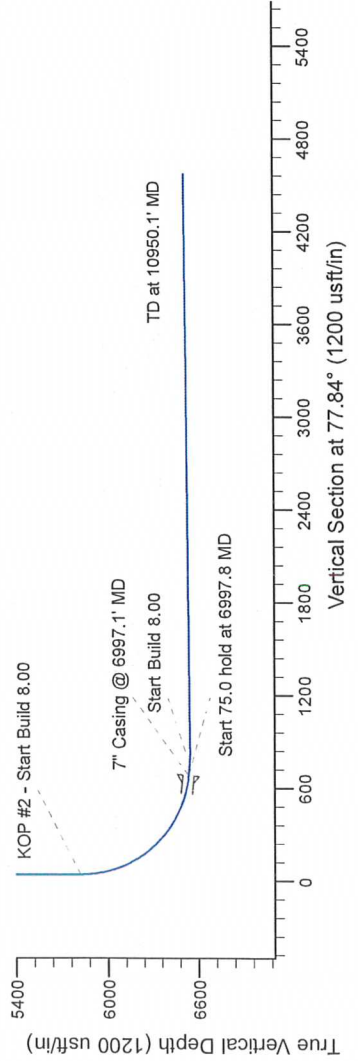
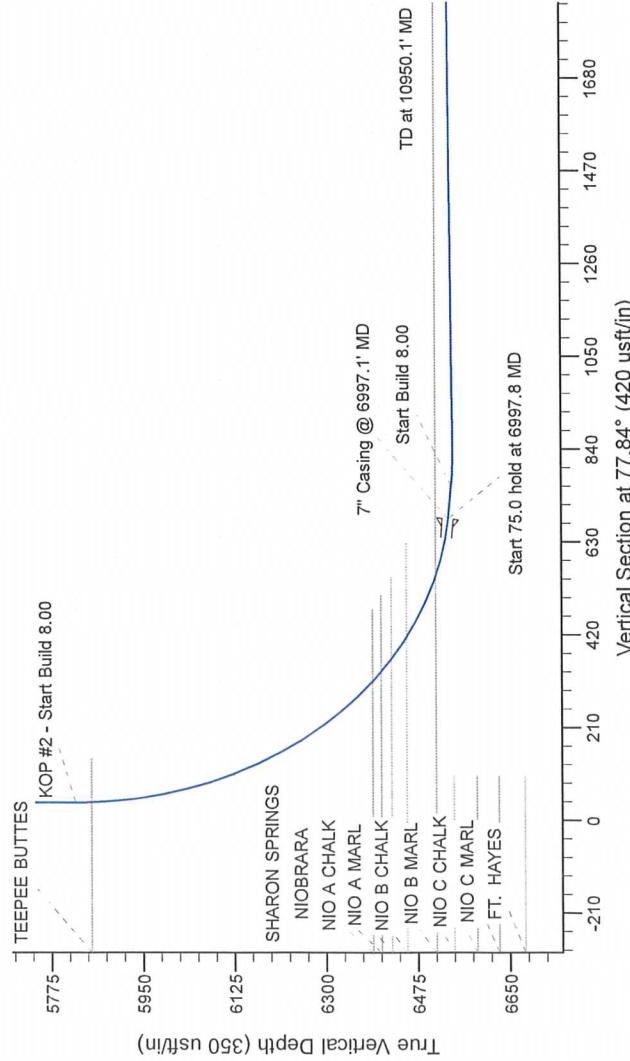
Northern Region Drilling

Geodetic System: US State Plane 1983
Datum: North American Datum 1983
Ellipsoid: GRS 1980
Zone: Colorado Northern Zone
System Datum: Mean Sea Level

SECTION DETAILS

Sec	MD	Inc	Azi	TVD	+N/-S	+E/-W	Dleg	TFace	Vsect	Target
1	0.0	0.00	0.00	0.0	0.0	0.0	0.00	0.00	0.0	
2	1500.0	0.00	0.00	1500.0	0.0	0.0	0.00	0.00	0.0	
3	2349.6	16.99	350.46	2337.2	123.3	-20.7	2.00	360.46	5.7	
4	4384.0	16.99	350.46	4282.8	709.7	-119.3	0.00	0.00	32.8	
5	5233.6	0.00	0.00	5120.0	833.0	-140.0	2.00	180.00	38.5	
6	5934.6	0.00	0.00	5821.0	833.0	-140.0	0.00	0.00	38.5	
7	6997.1	85.00	88.40	6534.5	851.3	513.5	8.00	88.40	681.3	
8	7072.1	85.00	88.40	6541.0	853.3	588.2	0.00	0.00	754.7	
9	7139.6	90.40	88.40	6543.7	855.2	655.6	8.00	0.00	821.0	
10	10950.1	90.40	88.40	6517.1	951.6	4454.6	0.00	0.00	4567.0	

Wells Ranch AE20-65HN BHL 2640'FNL, 535'FEL



T G M

Azimuths to Grid North
True North: -0.74°
Magnetic North: 7.63°

Magnetic Field
Strength: 53055.7nT
Dip Angle: 67.12°
Date: 2/27/2013
Model: IGRF200510

WELL DETAILS: Wells Ranch AE20-65HN

Ground Level: 4785.0	Longitude
0.0	0.0
1416113.29	3318470.03
40.469990	-104.355310

Plan: APD - Rev 0 (Wells Ranch AE20-65HN/Original Drilling)

Created By: Shalley Jewell Date: 10:59, March 08 2013

Checked: _____ Date: _____
Reviewed: _____ Date: _____
Approved: _____ Date: _____