

Northern Region Drilling

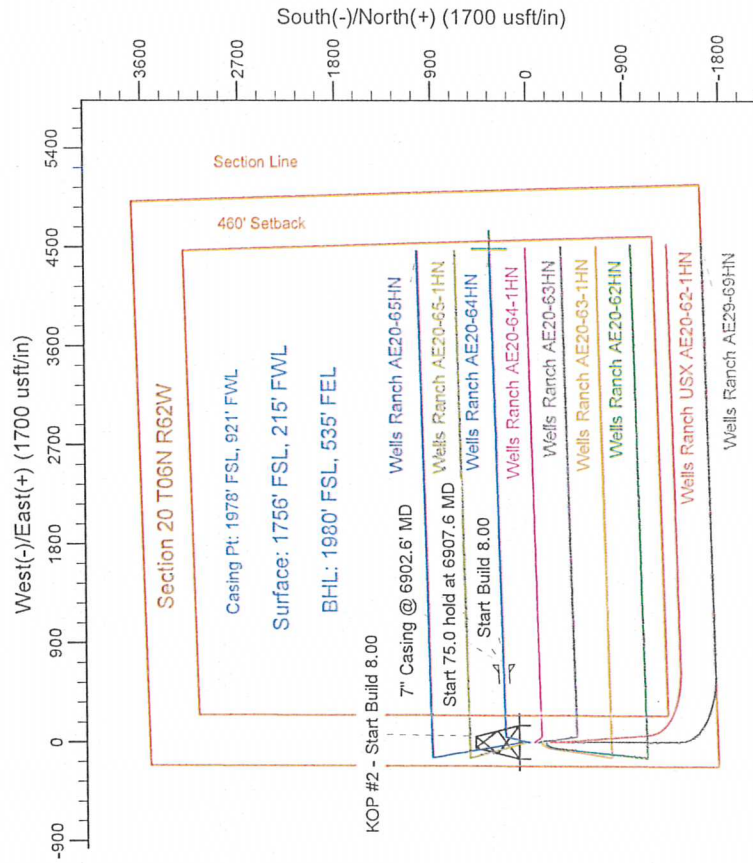
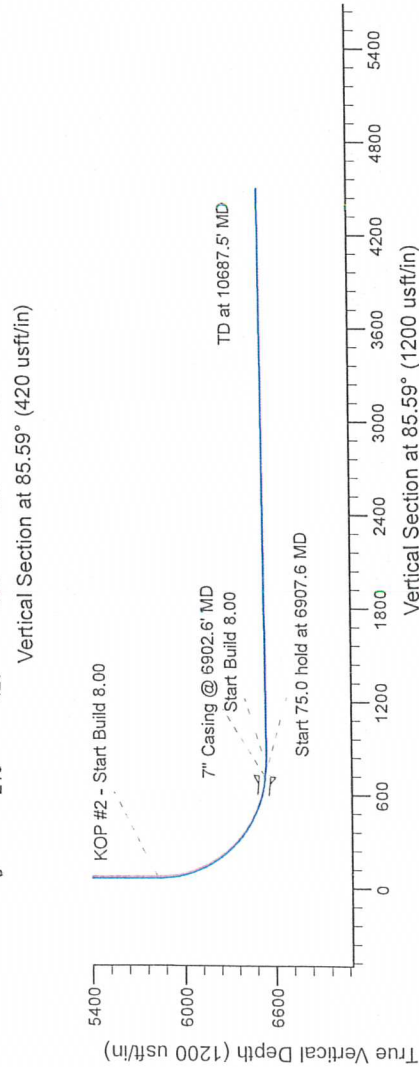
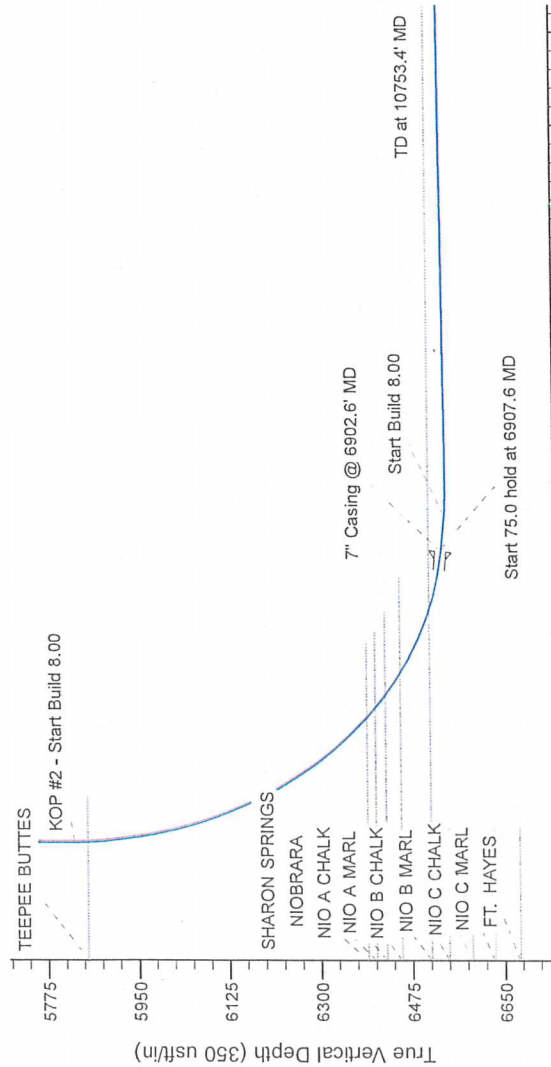
Project: Wattenberg Field
Site: AE (Sec.20-T06N-R62W) Weld County, CO
Well: Wells Ranch AE20-64HN
Wellbore: Original Drilling
Design: APD - Rev 0

Geodetic System: US State Plane 1983
Datum: North American Datum 1983
Ellipsoid: GRS 1980
Zone: Colorado Northern Zone
System Datum: Mean Sea Level

SECTION DETAILS

Sec	MD	Inc	Azi	TVD	+N/-S	+E/-W	Dleg	TFace	VSecl	Target
1	0.0	0.00	0.00	0.0	0.0	0.0	0.00	0.00	0.0	
2	2000.0	0.00	0.00	2000.0	0.0	0.0	0.00	0.00	0.0	
3	2502.4	12.05	12.58	2597.9	61.6	13.7	2.00	12.58	18.4	
4	3097.4	12.05	12.58	3082.1	162.4	36.3	0.00	0.00	49.6	
5	3699.8	0.00	0.00	3690.0	224.0	50.0	0.00	0.00	67.1	
6	5940.1	0.00	0.00	5820.3	224.0	50.0	0.00	0.00	720.1	
7	6902.6	85.00	88.42	6533.8	242.0	703.5	8.00	88.42	794.7	
8	6977.6	85.00	88.42	6540.3	244.1	778.2	0.00	0.00	862.0	
9	7045.1	90.40	88.42	6543.0	245.9	845.6	8.00	0.00	862.0	
10	10687.5	90.40	88.42	6517.6	346.2	4486.5	0.00	0.00	4499.9	

Wells Ranch AE20-64HN BHL 1980FSL 535FEL



T G M

Azimuths to Grid North
True North: -0.74°
Magnetic North: 7.63°

Magnetic Field
Strength: 53055.6snT
Dip Angle: 67.12°
Date: 2/27/2013
Model: IGRF200510

WELL DETAILS: Wells Ranch AE20-64HN

North	East	Ground Level	Longitude
0.0	1416036.76	3318468.24	-104.355320

Plan: APD - Rev 0 (Wells Ranch AE20-64HN/Original Drilling)

Created By: Shalley Jewell	Date: 11:06, March 08 2013
Checked:	Date:
Reviewed:	Date:
Approved:	Date: