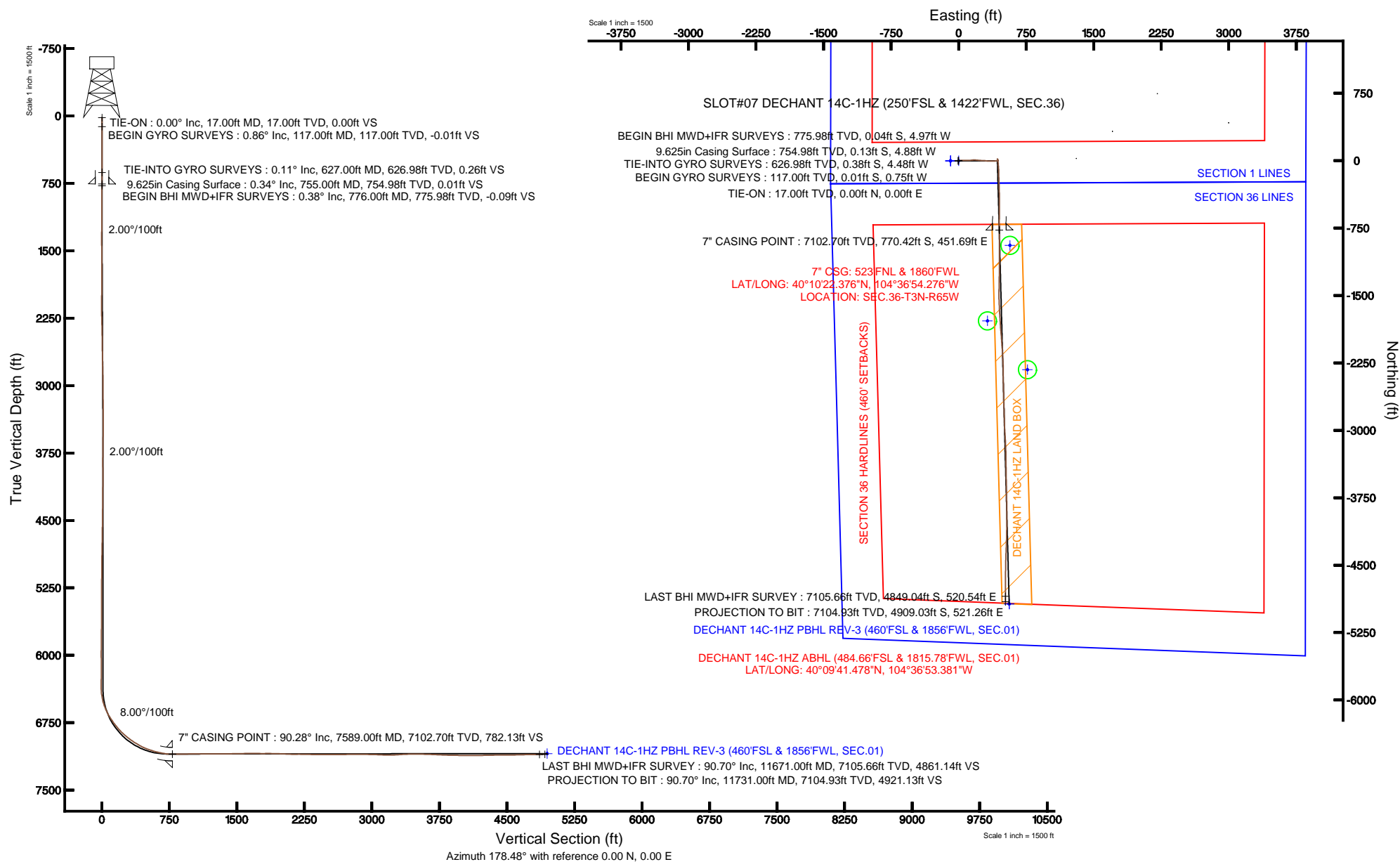


KERR-MCGEE OIL & GAS ONSHORE LP

Location: COLORADO Slot: SLOT#07 DECHANT 14C-1HZ (250'FSL & 1422'FWL, SEC.36)
 Field: WELD COUNTY (KERR MCGEE) Well: DECHANT 14C-1HZ
 Facility: SEC.36-T3N-R65W Wellbore: DECHANT 14C-1HZ PWB

Plot reference wellpath is DECHANT 14C-1HZ (REV-B.0) PWP

True vertical depths are referenced to XTREME 8 (RKB)	Grid System: NAD83 / Lambert Colorado SP, Northern Zone (501), US feet
Measured depths are referenced to XTREME 8 (RKB)	North Reference: True north
XTREME 8 (RKB) to Mean Sea Level: 4846 feet	Scale: True distance
Mean Sea Level to Mud line (At Slot: SLOT#07 DECHANT 14C-1HZ (250'FSL & 1422'FWL, SEC.36)): 0 feet	Depths are in feet
Coordinates are in feet referenced to Slot	Created by: wilsjeff02 on 3/19/2013





Actual Wellpath Report

DECHANT 14C-1HZ AWP

Page 1 of 7



REFERENCE WELLPATH IDENTIFICATION			
Operator	KERR-MCGEE OIL & GAS ONSHORE LP	Slot	SLOT#07 DECHANT 14C-1HZ (250'FSL & 1422'FWL, SEC.36)
Area	COLORADO	Well	DECHANT 14C-1HZ
Field	WELD COUNTY (KERR MCGEE)	Wellbore	DECHANT 14C-1HZ AWB
Facility	SEC.36-T3N-R65W		

REPORT SETUP INFORMATION			
Projection System	NAD83 / Lambert Colorado SP, Northern Zone (501), US feet	Software System	WellArchitect® 3.0.2
North Reference	True	User	Wilsjef02
Scale	0.999958	Report Generated	3/19/2013 at 12:58:37
Convergence at slot	0.57° East	Database/Source file	WellArchitectDB/DECHANT_14C-1HZ_AWB.xml

WELLPATH LOCATION						
	Local coordinates		Grid coordinates		Geographic coordinates	
	North[ft]	East[ft]	Easting[US ft]	Northing[US ft]	Latitude	Longitude
Slot Location	-2849.87	-1688.71	3246822.53	1307823.62	40°10'29.989"N	104°37'00.095"W
Facility Reference Pt			3248482.50	1310690.15	40°10'58.152"N	104°36'38.340"W
Field Reference Pt			3197771.84	1268891.29	40°04'09.600"N	104°47'36.000"W

WELLPATH DATUM			
Calculation method	Minimum curvature	XTREME 8 (RKB) to Facility Vertical Datum	4846.00ft
Horizontal Reference Pt	Slot	XTREME 8 (RKB) to Mean Sea Level	4846.00ft
Vertical Reference Pt	XTREME 8 (RKB)	XTREME 8 (RKB) to Mud Line at Slot (SLOT#07 DECHANT 14C-1HZ (250'FSL & 1422'FWL, SEC.36))	4846.00ft
MD Reference Pt	XTREME 8 (RKB)	Section Origin	N 0.00, E 0.00 ft
Field Vertical Reference	Mean Sea Level	Section Azimuth	173.94°



Actual Wellpath Report

DECHANT 14C-1HZ AWP

Page 2 of 7



REFERENCE WELLPATH IDENTIFICATION

Operator	KERR-MCGEE OIL & GAS ONSHORE LP	Slot	SLOT#07 DECHANT 14C-1HZ (250'FSL & 1422'FWL, SEC.36)
Area	COLORADO	Well	DECHANT 14C-1HZ
Field	WELD COUNTY (KERR MCGEE)	Wellbore	DECHANT 14C-1HZ AWB
Facility	SEC.36-T3N-R65W		

WELLPATH DATA (138 stations) † = interpolated/extrapolated station

MD [ft]	Inclination [°]	Azimuth [°]	TVD [ft]	Vert Sect [ft]	North [ft]	East [ft]	Latitude	Longitude	DLS [°/100ft]	Comments
0.00†	0.000	269.210	0.00	0.00	0.00	0.00	40°10'29.989"N	104°37'00.095"W	0.00	
17.00	0.000	269.210	17.00	0.00	0.00	0.00	40°10'29.989"N	104°37'00.095"W	0.00	TIE-ON
117.00	0.860	269.210	117.00	-0.07	-0.01	-0.75	40°10'29.989"N	104°37'00.105"W	0.86	BEGIN GYRO SURVEYS
217.00	0.640	275.970	216.99	-0.25	0.04	-2.06	40°10'29.989"N	104°37'00.121"W	0.24	
317.00	0.310	239.040	316.98	-0.26	-0.04	-2.84	40°10'29.989"N	104°37'00.132"W	0.43	
417.00	0.450	245.080	416.98	-0.02	-0.35	-3.43	40°10'29.986"N	104°37'00.139"W	0.15	
517.00	0.340	283.330	516.98	0.01	-0.45	-4.08	40°10'29.985"N	104°37'00.148"W	0.28	
617.00	0.110	266.790	616.98	-0.09	-0.38	-4.46	40°10'29.985"N	104°37'00.152"W	0.24	
627.00	0.110	263.970	626.98	-0.09	-0.38	-4.48	40°10'29.985"N	104°37'00.153"W	0.05	TIE-INTO GYRO SURVEYS
776.00†	0.384	315.618	775.98	-0.48	-0.04	-4.97	40°10'29.989"N	104°37'00.159"W	0.22	BEGIN BHI MWD+IFR SURVEYS
867.00	0.580	320.830	866.97	-1.11	0.53	-5.48	40°10'29.994"N	104°37'00.166"W	0.22	
957.00	1.610	98.780	956.96	-1.17	0.69	-4.51	40°10'29.996"N	104°37'00.153"W	2.31	
1048.00	4.480	83.790	1047.83	-0.85	0.88	0.28	40°10'29.998"N	104°37'00.091"W	3.25	
1139.00	4.160	79.290	1138.57	-1.13	1.88	7.06	40°10'30.008"N	104°37'00.004"W	0.51	
1229.00	5.550	85.400	1228.24	-1.28	2.84	14.61	40°10'30.017"N	104°36'59.907"W	1.65	
1320.00	5.490	84.190	1318.82	-1.15	3.63	23.32	40°10'30.025"N	104°36'59.795"W	0.14	
1410.00	6.840	91.660	1408.30	-0.41	3.91	32.96	40°10'30.028"N	104°36'59.670"W	1.74	
1501.00	8.480	90.510	1498.49	1.09	3.69	45.09	40°10'30.026"N	104°36'59.514"W	1.81	
1593.00	9.810	86.410	1589.32	2.20	4.12	59.70	40°10'30.030"N	104°36'59.326"W	1.61	
1684.00	11.580	92.090	1678.73	3.83	4.28	76.56	40°10'30.031"N	104°36'59.109"W	2.26	
1776.00	11.700	88.890	1768.84	5.95	4.12	95.12	40°10'30.030"N	104°36'58.870"W	0.71	
1867.00	12.710	88.870	1857.78	7.60	4.50	114.35	40°10'30.033"N	104°36'58.622"W	1.11	
1958.00	12.500	85.220	1946.59	8.68	5.52	134.17	40°10'30.043"N	104°36'58.366"W	0.91	
2050.00	11.950	81.570	2036.51	8.51	7.74	153.52	40°10'30.065"N	104°36'58.117"W	1.03	
2135.00	12.250	87.990	2119.62	8.79	9.35	171.24	40°10'30.081"N	104°36'57.889"W	1.62	
2220.00	11.760	96.470	2202.77	11.30	8.69	188.86	40°10'30.075"N	104°36'57.662"W	2.15	
2306.00	11.660	96.110	2286.98	15.04	6.78	206.21	40°10'30.056"N	104°36'57.439"W	0.14	
2391.00	11.140	95.080	2370.30	18.43	5.13	222.93	40°10'30.040"N	104°36'57.223"W	0.66	
2476.00	10.560	94.290	2453.78	21.42	3.82	238.87	40°10'30.027"N	104°36'57.018"W	0.70	
2561.00	10.040	92.480	2537.41	23.92	2.92	254.04	40°10'30.018"N	104°36'56.822"W	0.72	
2647.00	9.410	91.900	2622.18	26.01	2.36	268.56	40°10'30.012"N	104°36'56.635"W	0.74	
2732.00	9.020	92.700	2706.08	27.98	1.82	282.16	40°10'30.007"N	104°36'56.460"W	0.48	
2817.00	9.860	96.980	2789.93	30.64	0.62	296.04	40°10'29.995"N	104°36'56.281"W	1.29	
2902.00	9.610	97.620	2873.71	33.96	-1.20	310.29	40°10'29.977"N	104°36'56.098"W	0.32	
2988.00	9.640	90.960	2958.50	36.54	-2.28	324.61	40°10'29.966"N	104°36'55.913"W	1.29	
3073.00	9.520	91.640	3042.31	38.35	-2.60	338.75	40°10'29.963"N	104°36'55.731"W	0.19	
3158.00	9.510	89.750	3126.14	40.00	-2.77	352.80	40°10'29.962"N	104°36'55.550"W	0.37	
3244.00	9.100	89.890	3211.01	41.43	-2.72	366.70	40°10'29.962"N	104°36'55.371"W	0.48	
3329.00	8.510	88.550	3295.01	42.63	-2.55	379.71	40°10'29.964"N	104°36'55.203"W	0.73	
3414.00	8.520	88.290	3379.07	43.62	-2.20	392.29	40°10'29.967"N	104°36'55.041"W	0.05	
3499.00	7.900	87.040	3463.20	44.41	-1.72	404.42	40°10'29.972"N	104°36'54.885"W	0.76	
3584.00	7.130	87.710	3547.47	45.07	-1.20	415.53	40°10'29.977"N	104°36'54.742"W	0.91	
3670.00	5.090	87.380	3632.98	45.65	-0.82	424.67	40°10'29.981"N	104°36'54.624"W	2.37	
3755.00	2.930	65.890	3717.77	45.21	0.24	430.42	40°10'29.991"N	104°36'54.550"W	3.05	
3840.00	2.510	67.990	3802.67	44.02	1.83	434.13	40°10'30.007"N	104°36'54.502"W	0.51	



Actual Wellpath Report

DECHANT 14C-1HZ AWP

Page 3 of 7



REFERENCE WELLPATH IDENTIFICATION

Operator	KERR-MCGEE OIL & GAS ONSHORE LP	Slot	SLOT#07 DECHANT 14C-1HZ (250'FSL & 1422'FWL, SEC.36)
Area	COLORADO	Well	DECHANT 14C-1HZ
Field	WELD COUNTY (KERR MCGEE)	Wellbore	DECHANT 14C-1HZ AWB
Facility	SEC.36-T3N-R65W		

WELLPATH DATA (138 stations) † = interpolated/extrapolated station

MD [ft]	Inclination [°]	Azimuth [°]	TVD [ft]	Vert Sect [ft]	North [ft]	East [ft]	Latitude	Longitude	DLS [°/100ft]	Comments
3925.00	1.680	106.860	3887.62	43.99	2.17	437.05	40°10'30.010"N	104°36'54.465"W	1.88	
4011.00	1.640	108.540	3973.58	45.00	1.41	439.42	40°10'30.003"N	104°36'54.434"W	0.07	
4096.00	0.960	297.790	4058.57	45.11	1.35	439.95	40°10'30.002"N	104°36'54.427"W	3.05	
4352.00	1.080	306.790	4314.53	42.27	3.80	436.12	40°10'30.027"N	104°36'54.477"W	0.08	
4608.00	1.130	305.260	4570.49	38.96	6.70	432.12	40°10'30.055"N	104°36'54.528"W	0.02	
4864.00	1.160	354.880	4826.44	34.71	10.74	429.83	40°10'30.095"N	104°36'54.558"W	0.38	
4949.00	0.650	21.700	4911.43	33.42	12.04	429.93	40°10'30.108"N	104°36'54.556"W	0.76	
5205.00	0.400	1.150	5167.42	31.25	14.29	430.49	40°10'30.130"N	104°36'54.549"W	0.12	
5461.00	0.170	300.570	5423.42	30.14	15.37	430.18	40°10'30.141"N	104°36'54.553"W	0.14	
5717.00	0.430	1.650	5679.41	28.96	16.53	429.88	40°10'30.152"N	104°36'54.557"W	0.15	
5973.00	0.840	34.350	5935.40	26.58	19.04	430.96	40°10'30.177"N	104°36'54.543"W	0.21	
6058.00	0.390	184.140	6020.40	26.39	19.26	431.30	40°10'30.179"N	104°36'54.539"W	1.40	
6314.00	0.490	28.370	6276.39	26.34	19.36	431.75	40°10'30.180"N	104°36'54.533"W	0.34	
6345.00	0.780	36.230	6307.39	26.08	19.64	431.94	40°10'30.183"N	104°36'54.530"W	0.97	
6399.00	0.530	126.000	6361.39	25.97	19.79	432.36	40°10'30.185"N	104°36'54.525"W	1.74	
6442.00	4.280	169.770	6404.34	27.71	18.10	432.81	40°10'30.168"N	104°36'54.519"W	9.10	
6484.00	7.990	170.570	6446.10	32.18	13.67	433.56	40°10'30.124"N	104°36'54.510"W	8.84	
6527.00	11.930	169.830	6488.44	39.60	6.35	434.84	40°10'30.052"N	104°36'54.493"W	9.17	
6570.00	15.850	170.980	6530.17	49.90	-3.83	436.54	40°10'29.951"N	104°36'54.471"W	9.14	
6612.00	19.990	173.090	6570.13	62.82	-16.63	438.31	40°10'29.825"N	104°36'54.448"W	9.98	
6655.00	23.710	175.130	6610.03	78.81	-32.54	439.93	40°10'29.667"N	104°36'54.428"W	8.83	
6697.00	27.910	175.860	6647.83	97.09	-50.77	441.35	40°10'29.487"N	104°36'54.409"W	10.03	
6740.00	31.980	176.510	6685.09	118.53	-72.18	442.77	40°10'29.276"N	104°36'54.391"W	9.50	
6783.00	34.880	177.540	6720.97	142.18	-95.84	443.99	40°10'29.042"N	104°36'54.375"W	6.87	
6825.00	35.070	178.090	6755.38	166.20	-119.89	444.91	40°10'28.804"N	104°36'54.363"W	0.88	
6868.00	38.390	179.360	6789.84	191.82	-145.60	445.47	40°10'28.550"N	104°36'54.356"W	7.92	
6911.00	41.490	178.320	6822.81	219.32	-173.20	446.04	40°10'28.277"N	104°36'54.349"W	7.37	
6953.00	45.020	177.940	6853.39	248.02	-201.96	446.98	40°10'27.993"N	104°36'54.337"W	8.43	
6996.00	47.950	177.600	6883.00	279.13	-233.11	448.20	40°10'27.685"N	104°36'54.321"W	6.84	
7039.00	50.750	178.500	6911.01	311.67	-265.71	449.30	40°10'27.363"N	104°36'54.307"W	6.70	
7081.00	53.620	178.150	6936.75	344.75	-298.88	450.27	40°10'27.035"N	104°36'54.294"W	6.86	
7124.00	56.470	178.800	6961.39	379.88	-334.10	451.21	40°10'26.687"N	104°36'54.282"W	6.74	
7167.00	58.660	179.620	6984.45	416.01	-370.39	451.71	40°10'26.329"N	104°36'54.276"W	5.34	
7209.00	60.450	179.740	7005.73	452.04	-406.59	451.91	40°10'25.971"N	104°36'54.273"W	4.27	
7252.00	64.650	179.930	7025.55	489.99	-444.74	452.02	40°10'25.594"N	104°36'54.272"W	9.78	
7295.00	68.330	180.060	7042.70	529.19	-484.17	452.02	40°10'25.204"N	104°36'54.272"W	8.56	
7337.00	71.930	179.640	7056.97	568.47	-523.66	452.12	40°10'24.814"N	104°36'54.271"W	8.62	
7380.00	74.430	179.820	7069.41	609.42	-564.82	452.32	40°10'24.407"N	104°36'54.268"W	5.83	
7423.00	76.120	180.720	7080.34	650.75	-606.40	452.12	40°10'23.996"N	104°36'54.271"W	4.42	
7465.00	78.140	180.930	7089.70	691.40	-647.34	451.53	40°10'23.592"N	104°36'54.278"W	4.83	
7508.00	81.880	179.610	7097.16	733.48	-689.68	451.33	40°10'23.174"N	104°36'54.281"W	9.21	
7549.00	86.110	179.810	7101.44	774.04	-730.45	451.54	40°10'22.771"N	104°36'54.278"W	10.33	
7589.00†	90.279	179.748	7102.70	813.80	-770.42	451.69	40°10'22.376"N	104°36'54.276"W	10.42	7" CASING POINT
7601.00	91.530	179.730	7102.51	825.74	-782.42	451.75	40°10'22.257"N	104°36'54.275"W	10.42	
7687.00	90.400	179.520	7101.07	911.30	-868.40	452.31	40°10'21.407"N	104°36'54.268"W	1.34	



Actual Wellpath Report

DECHANT 14C-1HZ AWP

Page 4 of 7



REFERENCE WELLPATH IDENTIFICATION

Operator	KERR-MCGEE OIL & GAS ONSHORE LP	Slot	SLOT#07 DECHANT 14C-1HZ (250'FSL & 1422'FWL, SEC.36)
Area	COLORADO	Well	DECHANT 14C-1HZ
Field	WELD COUNTY (KERR MCGEE)	Wellbore	DECHANT 14C-1HZ AWB
Facility	SEC.36-T3N-R65W		

WELLPATH DATA (138 stations)

MD [ft]	Inclination [°]	Azimuth [°]	TVD [ft]	Vert Sect [ft]	North [ft]	East [ft]	Latitude	Longitude	DLS [°/100ft]	Comments
7772.00	90.300	179.760	7100.55	995.88	-953.40	452.85	40°10'20.567"N	104°36'54.261"W	0.31	
7858.00	90.060	179.800	7100.28	1081.44	-1039.40	453.18	40°10'19.718"N	104°36'54.257"W	0.28	
7943.00	90.240	180.310	7100.05	1165.95	-1124.39	453.09	40°10'18.878"N	104°36'54.258"W	0.64	
8028.00	89.750	180.270	7100.06	1250.43	-1209.39	452.66	40°10'18.038"N	104°36'54.264"W	0.58	
8114.00	90.120	181.550	7100.16	1335.79	-1295.38	451.30	40°10'17.188"N	104°36'54.281"W	1.55	
8199.00	91.290	180.760	7099.11	1420.11	-1380.35	449.58	40°10'16.348"N	104°36'54.304"W	1.66	
8284.00	91.350	180.770	7097.15	1504.48	-1465.32	448.45	40°10'15.509"N	104°36'54.318"W	0.07	
8369.00	90.520	178.460	7095.77	1589.05	-1550.30	449.02	40°10'14.669"N	104°36'54.311"W	2.89	
8455.00	90.330	176.870	7095.13	1674.86	-1636.23	452.52	40°10'13.820"N	104°36'54.266"W	1.86	
8540.00	89.320	176.420	7095.39	1759.77	-1721.08	457.50	40°10'12.981"N	104°36'54.202"W	1.30	
8625.00	90.520	176.960	7095.51	1844.67	-1805.94	462.41	40°10'12.143"N	104°36'54.138"W	1.55	
8711.00	88.790	174.930	7096.03	1930.60	-1891.71	468.49	40°10'11.295"N	104°36'54.060"W	3.10	
8796.00	87.530	175.790	7098.76	2015.53	-1976.39	475.36	40°10'10.458"N	104°36'53.972"W	1.79	
8881.00	87.780	175.630	7102.23	2100.42	-2061.08	481.71	40°10'09.621"N	104°36'53.890"W	0.35	
8966.00	90.860	176.610	7103.24	2185.34	-2145.87	487.46	40°10'08.783"N	104°36'53.816"W	3.80	
9052.00	88.300	177.160	7103.87	2271.22	-2231.73	492.14	40°10'07.935"N	104°36'53.756"W	3.04	
9137.00	89.140	178.760	7105.77	2355.98	-2316.65	495.16	40°10'07.096"N	104°36'53.717"W	2.13	
9222.00	90.580	180.270	7105.98	2440.58	-2401.64	495.88	40°10'06.256"N	104°36'53.707"W	2.45	
9308.00	89.480	178.130	7105.93	2526.21	-2487.63	497.08	40°10'05.406"N	104°36'53.692"W	2.80	
9393.00	89.880	179.310	7106.41	2610.91	-2572.60	498.98	40°10'04.566"N	104°36'53.668"W	1.47	
9478.00	90.460	178.300	7106.16	2695.60	-2657.58	500.75	40°10'03.727"N	104°36'53.645"W	1.37	
9564.00	90.920	178.070	7105.12	2781.36	-2743.53	503.48	40°10'02.877"N	104°36'53.610"W	0.60	
9649.00	89.290	178.130	7104.96	2866.13	-2828.58	506.29	40°10'02.038"N	104°36'53.573"W	1.92	
9734.00	90.090	178.380	7105.42	2950.89	-2913.44	508.88	40°10'01.198"N	104°36'53.540"W	0.99	
9820.00	88.610	177.330	7106.40	3036.68	-2999.37	512.10	40°10'00.349"N	104°36'53.499"W	2.11	
9905.00	87.350	176.090	7109.40	3121.52	-3084.18	516.98	40°09'59.511"N	104°36'53.436"W	2.08	
9991.00	89.010	177.160	7112.13	3207.38	-3169.98	522.03	40°09'58.663"N	104°36'53.371"W	2.30	
10076.00	94.370	179.790	7109.62	3292.04	-3254.87	524.30	40°09'57.824"N	104°36'53.342"W	7.02	
10161.00	92.340	178.990	7104.65	3376.51	-3339.72	525.20	40°09'56.986"N	104°36'53.330"W	2.57	
10247.00	90.680	178.870	7102.38	3462.15	-3425.67	526.81	40°09'56.136"N	104°36'53.309"W	1.94	
10332.00	89.780	179.220	7102.04	3546.81	-3510.66	528.22	40°09'55.297"N	104°36'53.291"W	1.14	
10417.00	87.850	178.740	7103.80	3631.46	-3595.62	529.74	40°09'54.457"N	104°36'53.272"W	2.34	
10503.00	87.500	178.660	7107.29	3717.09	-3681.53	531.69	40°09'53.608"N	104°36'53.247"W	0.42	
10588.00	87.690	178.880	7110.85	3801.71	-3766.43	533.51	40°09'52.769"N	104°36'53.223"W	0.34	
10673.00	88.790	179.580	7113.46	3886.31	-3851.38	534.65	40°09'51.929"N	104°36'53.208"W	1.53	
10759.00	88.520	179.920	7115.48	3971.84	-3937.36	535.03	40°09'51.080"N	104°36'53.204"W	0.50	
10844.00	89.870	180.260	7116.68	4056.34	-4022.35	534.89	40°09'50.240"N	104°36'53.205"W	1.64	
10929.00	90.400	181.110	7116.48	4140.75	-4107.34	533.88	40°09'49.400"N	104°36'53.218"W	1.18	
11014.00	90.270	181.220	7115.98	4225.08	-4192.32	532.15	40°09'48.560"N	104°36'53.241"W	0.20	
11100.00	91.390	182.100	7114.73	4310.29	-4278.28	529.66	40°09'47.711"N	104°36'53.273"W	1.66	
11185.00	91.450	182.280	7112.63	4394.38	-4363.19	526.41	40°09'46.872"N	104°36'53.315"W	0.22	
11271.00	90.280	181.240	7111.33	4479.57	-4449.13	523.77	40°09'46.022"N	104°36'53.349"W	1.82	
11356.00	90.220	181.080	7110.96	4563.89	-4534.12	522.05	40°09'45.183"N	104°36'53.371"W	0.20	
11442.00	91.440	181.430	7109.71	4649.18	-4620.08	520.16	40°09'44.333"N	104°36'53.395"W	1.48	
11527.00	91.010	179.600	7107.89	4733.60	-4705.06	519.40	40°09'43.493"N	104°36'53.405"W	2.21	



Actual Wellpath Report

DECHANT 14C-1HZ AWP

Page 5 of 7



REFERENCE WELLPATH IDENTIFICATION			
Operator	KERR-MCGEE OIL & GAS ONSHORE LP	Slot	SLOT#07 DECHANT 14C-1HZ (250'FSL & 1422'FWL, SEC.36)
Area	COLORADO	Well	DECHANT 14C-1HZ
Field	WELD COUNTY (KERR MCGEE)	Wellbore	DECHANT 14C-1HZ AWB
Facility	SEC.36-T3N-R65W		

WELLPATH DATA (138 stations)										
MD [ft]	Inclination [°]	Azimuth [°]	TVD [ft]	Vert Sect [ft]	North [ft]	East [ft]	Latitude	Longitude	DLS [°/100ft]	Comments
11613.00	90.890	179.610	7106.47	4819.17	-4791.04	519.99	40°09'42.644"N	104°36'53.397"W	0.14	
11671.00	90.700	179.310	7105.66	4876.89	-4849.04	520.54	40°09'42.071"N	104°36'53.390"W	0.61	LAST BHI MWD+IFR SURVEY
11731.00	90.700	179.310	7104.93	4936.62	-4909.03	521.26	40°09'41.478"N	104°36'53.381"W	0.00	PROJECTION TO BIT

HOLE & CASING SECTIONS - Ref Wellbore: DECHANT 14C-1HZ AWB Ref Wellpath: DECHANT 14C-1HZ AWP									
String/Diameter	Start MD [ft]	End MD [ft]	Interval [ft]	Start TVD [ft]	End TVD [ft]	Start N/S [ft]	Start E/W [ft]	End N/S [ft]	End E/W [ft]
13.5in Open Hole	17.00	755.00	738.00	17.00	754.98	0.00	0.00	-0.13	-4.88
9.625in Casing Surface	17.00	755.00	738.00	17.00	754.98	0.00	0.00	-0.13	-4.88
8.75in Open Hole	755.00	7599.00	6844.00	754.98	7102.56	-0.13	-4.88	-780.42	451.74
7in Casing Intermediate	17.00	7589.00	7572.00	17.00	7102.70	0.00	0.00	-770.42	451.69
6.125in Open Hole	7589.00	11731.00	4142.00	7102.70	7104.93	-770.42	451.69	-4909.03	521.26



Actual Wellpath Report

DECHANT 14C-1HZ AWP

Page 6 of 7



REFERENCE WELLPATH IDENTIFICATION			
Operator	KERR-MCGEE OIL & GAS ONSHORE LP	Slot	SLOT#07 DECHANT 14C-1HZ (250'FSL & 1422'FWL, SEC.36)
Area	COLORADO	Well	DECHANT 14C-1HZ
Field	WELD COUNTY (KERR MCGEE)	Wellbore	DECHANT 14C-1HZ AWB
Facility	SEC.36-T3N-R65W		

TARGETS									
Name	MD [ft]	TVD [ft]	North [ft]	East [ft]	Grid East [US ft]	Grid North [US ft]	Latitude	Longitude	Shape
SECTION 1 LINES		2.00	-0.30	-89.97	3246732.57	1307822.42	40°10'29.986"N	104°37'01.254"W	polygon
SECTION 36 LINES		2.00	-0.30	-89.97	3246732.57	1307822.42	40°10'29.986"N	104°37'01.254"W	polygon
DECHANT USX X 1-6 100' RADIUS		6875.00	-1781.82	319.81	3247160.06	1306045.15	40°10'12.381"N	104°36'55.975"W	circle
SECTION 01 HARDLINES (460' SETBACKS)		7002.00	-0.30	-89.97	3246732.57	1307822.42	40°10'29.986"N	104°37'01.254"W	polygon
SECTION 36 HARDLINES (460' SETBACKS)		7002.00	-0.30	-89.97	3246732.57	1307822.42	40°10'29.986"N	104°37'01.254"W	polygon
DECHANT 14C-1HZ PBHL REV-2 (460'FSL & 1856'FWL, SEC.01)		7086.00	-4933.69	561.48	3247433.10	1302895.98	40°09'41.234"N	104°36'52.863"W	point
DECHANT X 01-06 100' RADIUS		7090.00	-2324.89	764.30	3247609.92	1305506.56	40°10'07.014"N	104°36'50.250"W	circle
DECHANT X 01-03 100' RADIUS		7092.00	-941.79	569.46	3247401.32	1306887.59	40°10'20.682"N	104°36'52.759"W	circle
DECHANT 14C-1HZ LAND BOX		7095.00	0.00	0.00	3246822.53	1307823.62	40°10'29.989"N	104°37'00.095"W	polygon
DECHANT 14C-1HZ BHL ON PLAT REV-1 (460'FSL & 2038'FWL, SEC.01)		7096.00	-4933.69	743.48	3247615.08	1302897.80	40°09'41.234"N	104°36'50.519"W	point
DECHANT 14C-1HZ PBHL REV-3 (460'FSL & 1856'FWL, SEC.01)		7096.00	-4933.69	561.48	3247433.10	1302895.98	40°09'41.234"N	104°36'52.863"W	point

WELLPATH COMPOSITION - Ref Wellbore: DECHANT 14C-1HZ AWB Ref Wellpath: DECHANT 14C-1HZ AWP				
Start MD [ft]	End MD [ft]	Positional Uncertainty Model	Log Name/Comment	Wellbore
17.00	627.00	Generic gyro - continuous (Standard)	GYRO DATA SURVEYS <117-627>	DECHANT 14C-1HZ AWB
627.00	7549.00	NaviTrak (MAGCORR,IFR)	BHI MWD+IFR SURVEYS 8 3/4" HOLE <867-7549>	DECHANT 14C-1HZ AWB
7549.00	11671.00	OnTrak (MAGCORR,IFR)	BHI MWD+IFR SURVEYS 6 1/8" HOLE <7601-11671>	DECHANT 14C-1HZ AWB
11671.00	11731.00	Blind Drilling (std)	Projection to bit	DECHANT 14C-1HZ AWB



Actual Wellpath Report

DECHANT 14C-1HZ AWP

Page 7 of 7



REFERENCE WELLPATH IDENTIFICATION			
Operator	KERR-MCGEE OIL & GAS ONSHORE LP	Slot	SLOT#07 DECHANT 14C-1HZ (250'FSL & 1422'FWL, SEC.36)
Area	COLORADO	Well	DECHANT 14C-1HZ
Field	WELD COUNTY (KERR MCGEE)	Wellbore	DECHANT 14C-1HZ AWB
Facility	SEC.36-T3N-R65W		

WELLPATH COMMENTS					
MD [ft]	Inclination [°]	Azimuth [°]	TVD [ft]	Comment	
17.00	0.000	269.210	17.00	TIE-ON	
117.00	0.860	269.210	117.00	BEGIN GYRO SURVEYS	
627.00	0.110	263.970	626.98	TIE-INTO GYRO SURVEYS	
776.00	0.384	315.618	775.98	BEGIN BHI MWD+IFR SURVEYS	
7589.00	90.279	179.748	7102.70	7" CASING POINT	
11671.00	90.700	179.310	7105.66	LAST BHI MWD+IFR SURVEY	
11731.00	90.700	179.310	7104.93	PROJECTION TO BIT	