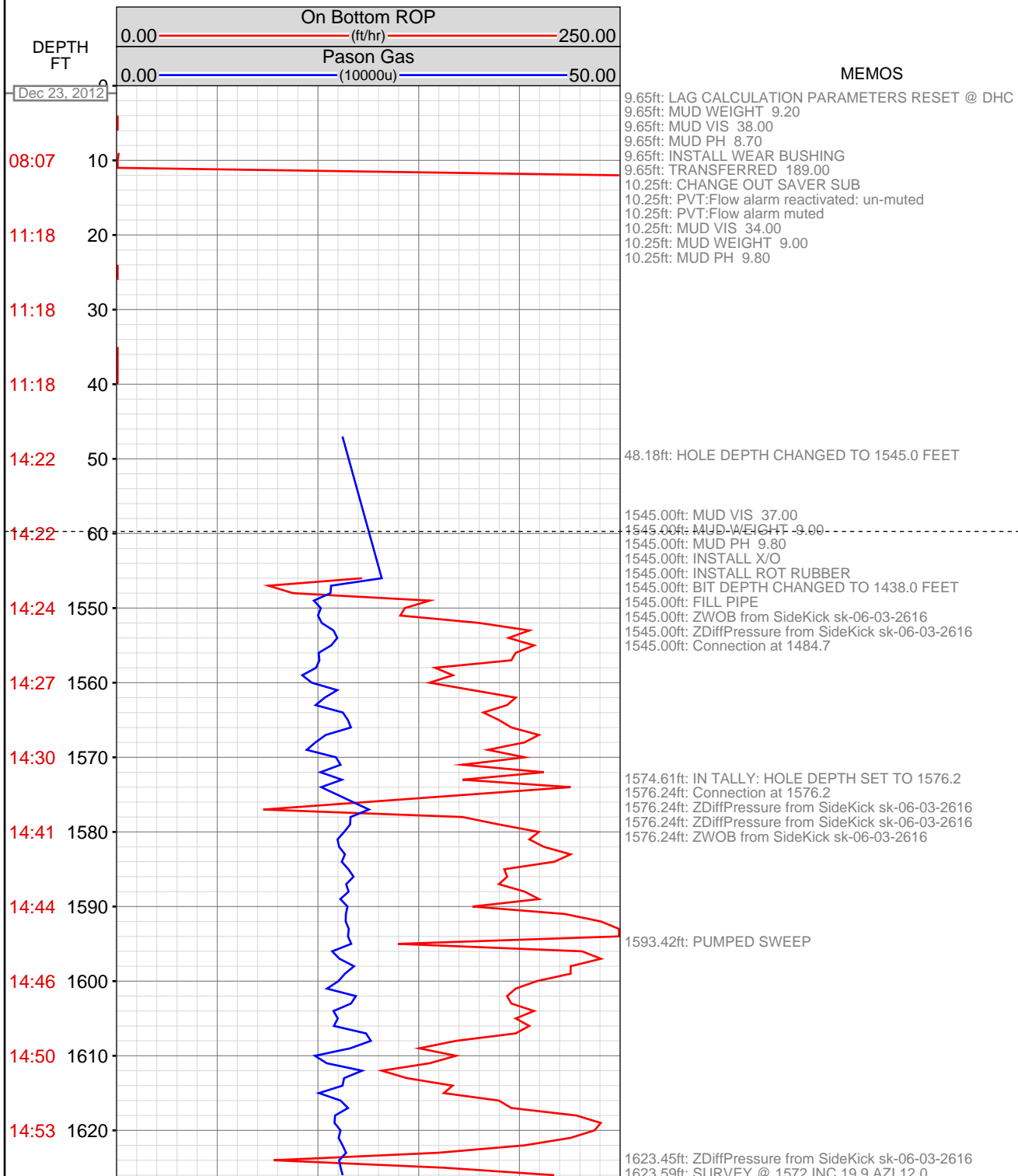
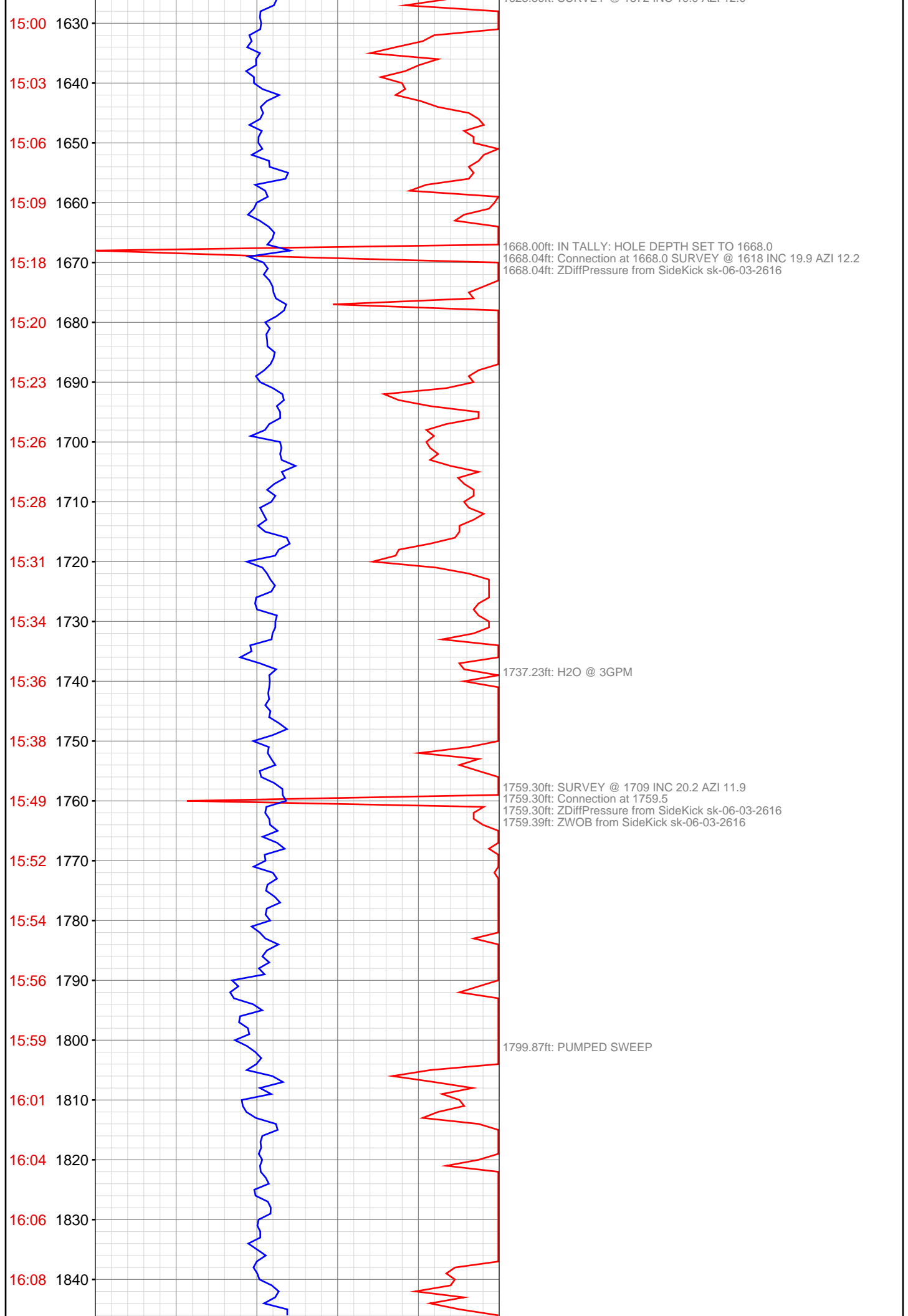
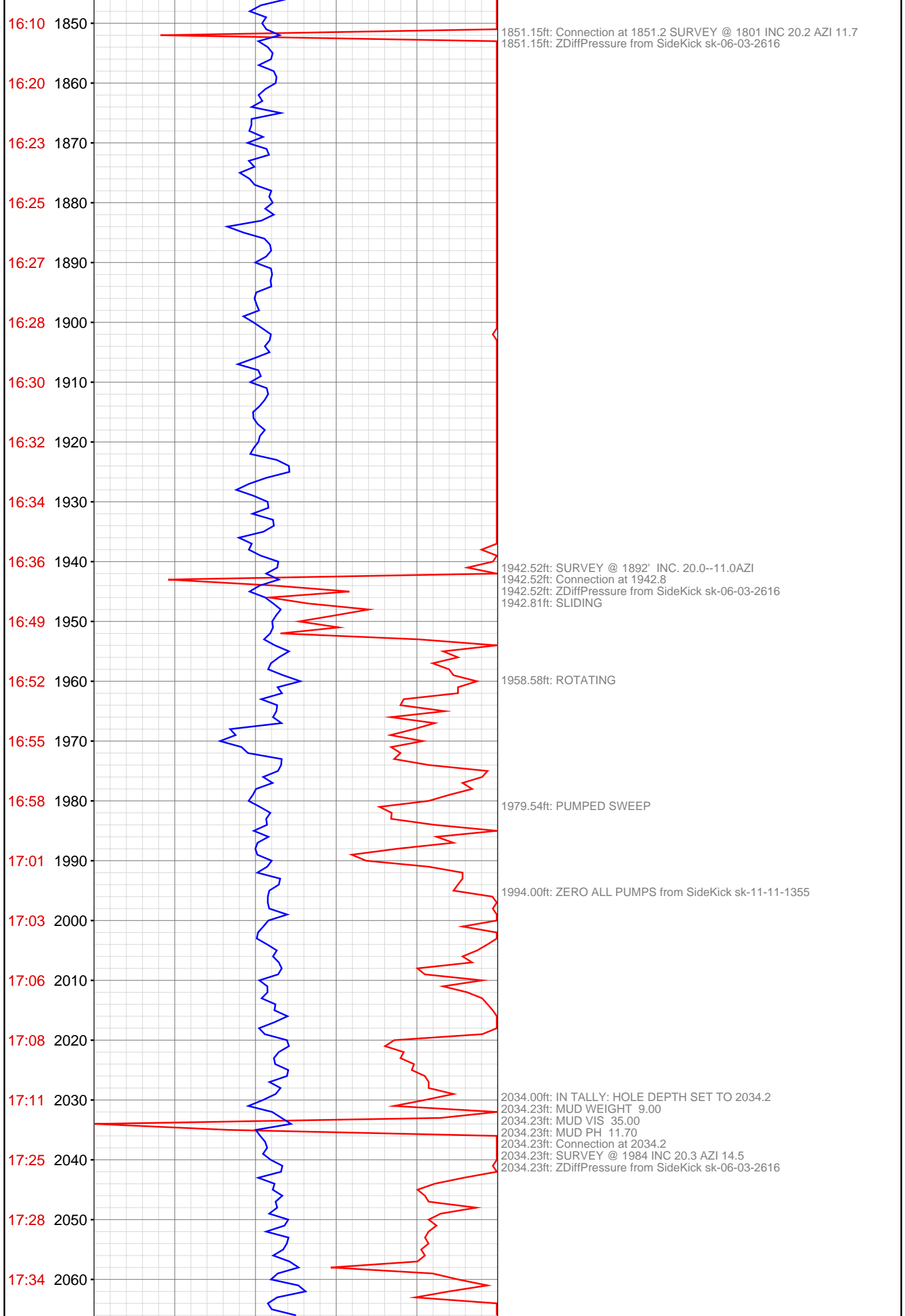


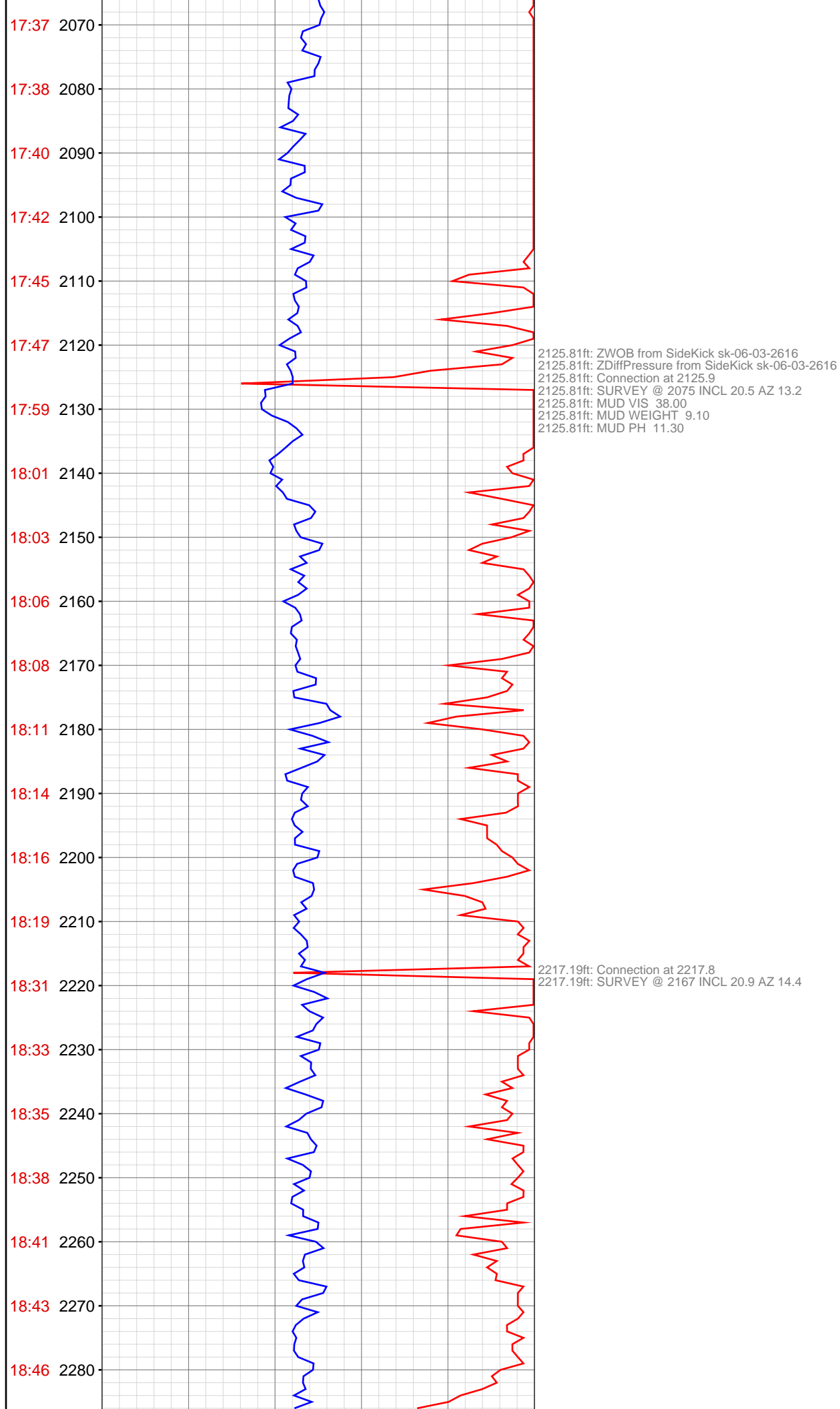
OPERATOR: EnCana Oil & Gas (USA), Inc.
WELL: BENZEL FEDERAL 24-14DD
FIELD:
LOCATION: SEC 24 TWP 6S RNG 93W
COUNTRY: USA
RIG: Pat-UTI 308

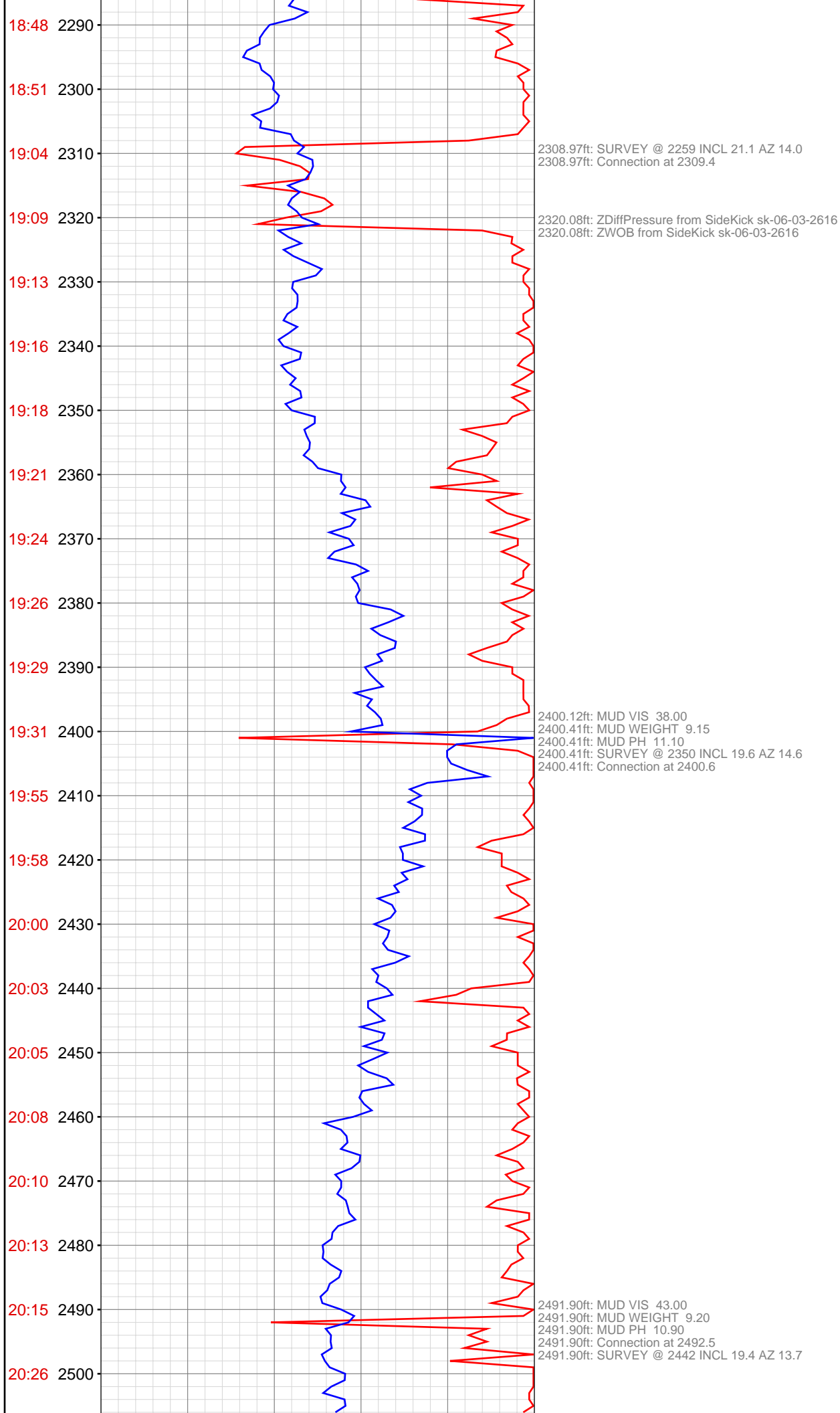
CONTRACTOR: Patterson-UTI Drilling Company
UNIQUE WELL ID: 05-045-20877
SPUD DATE: Dec 23, 2012 14:30
RELEASE DATE:

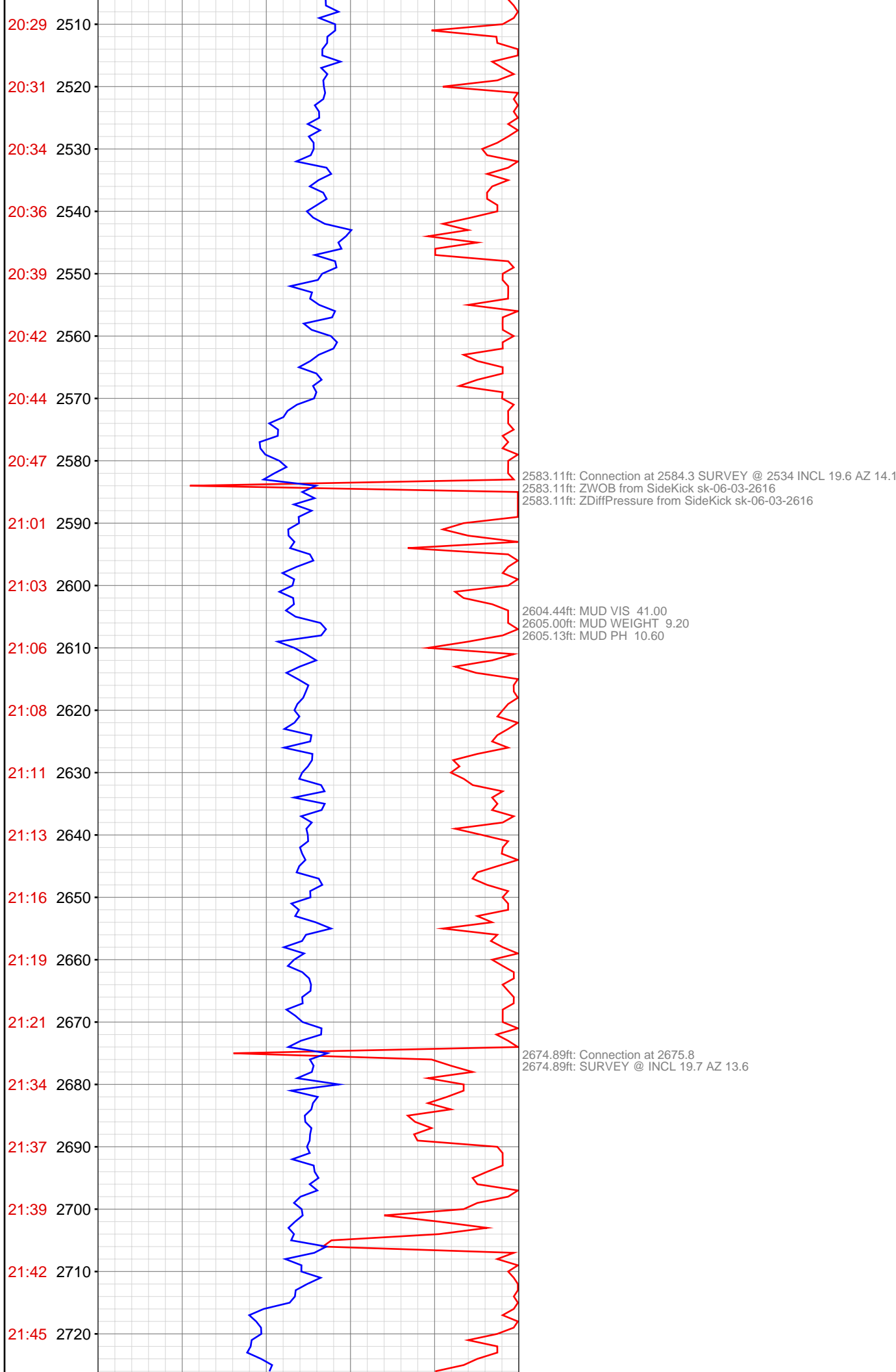


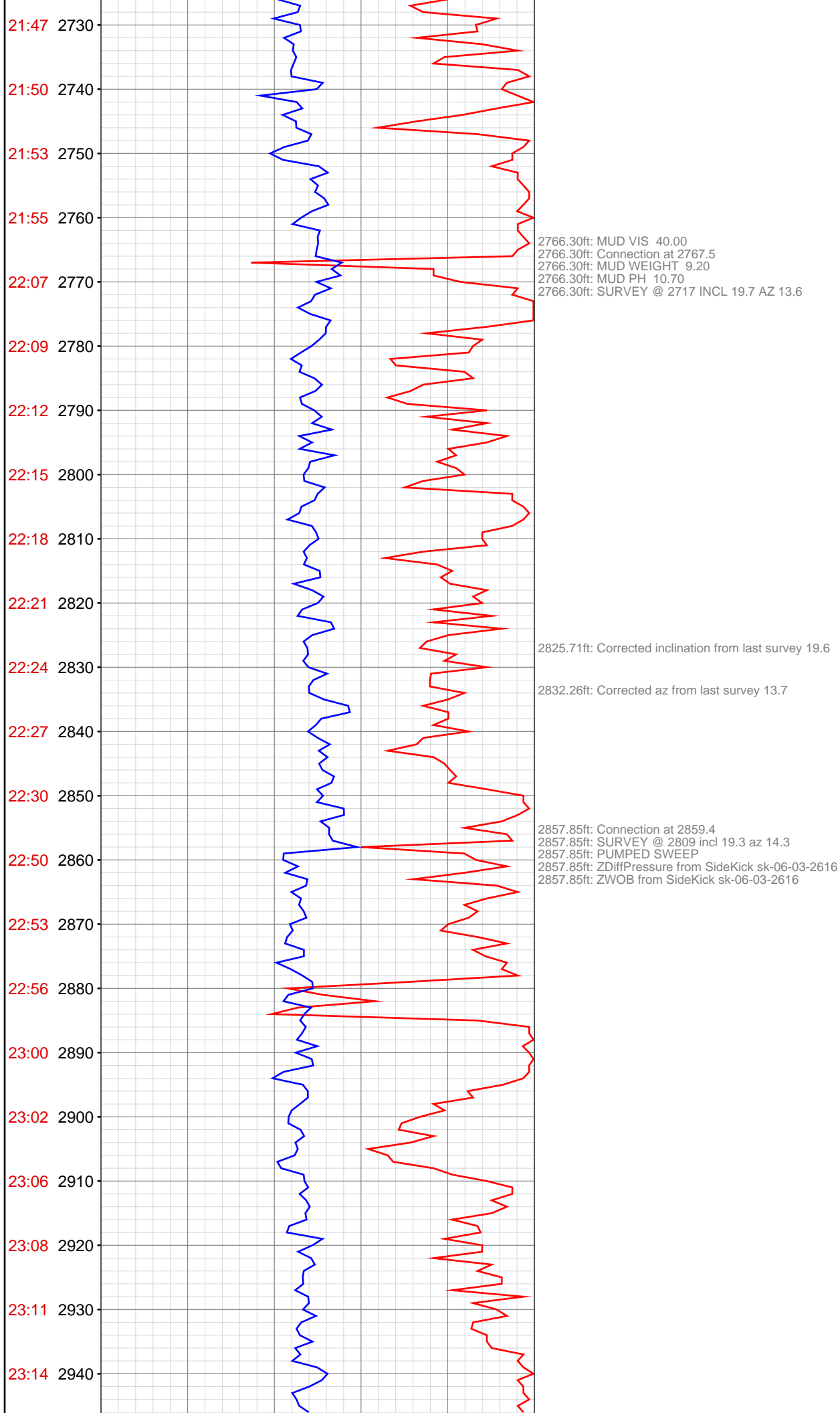


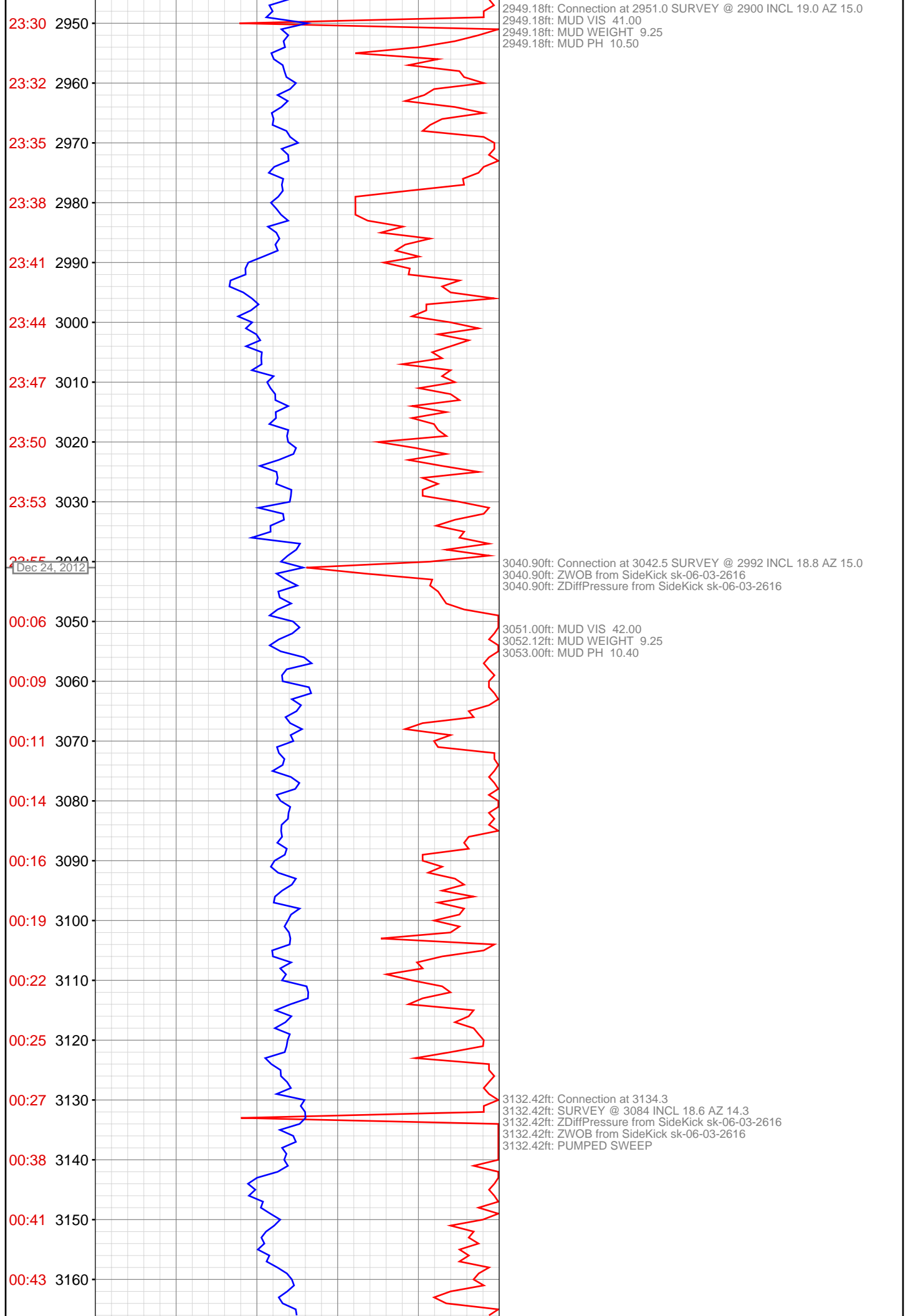


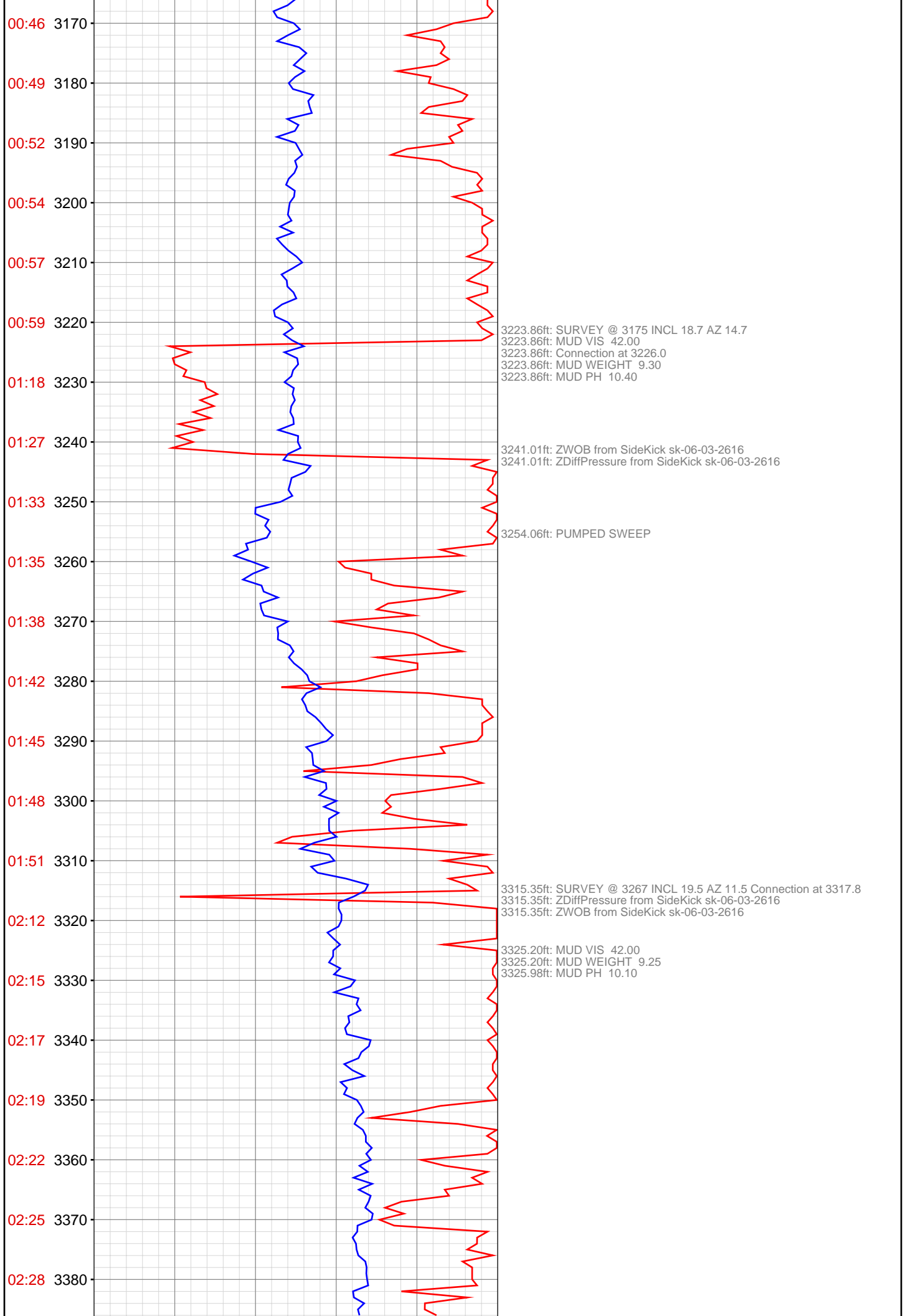


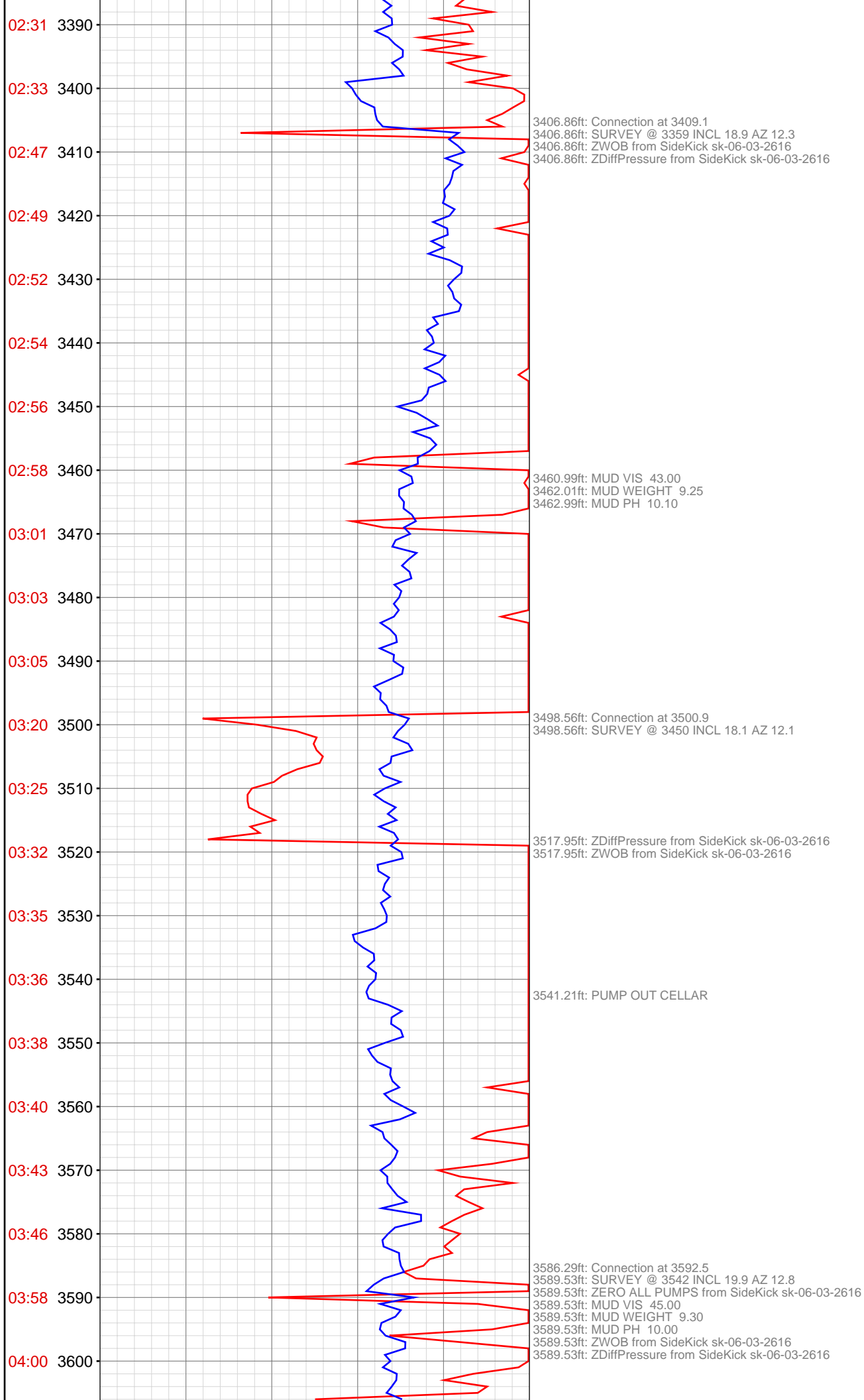


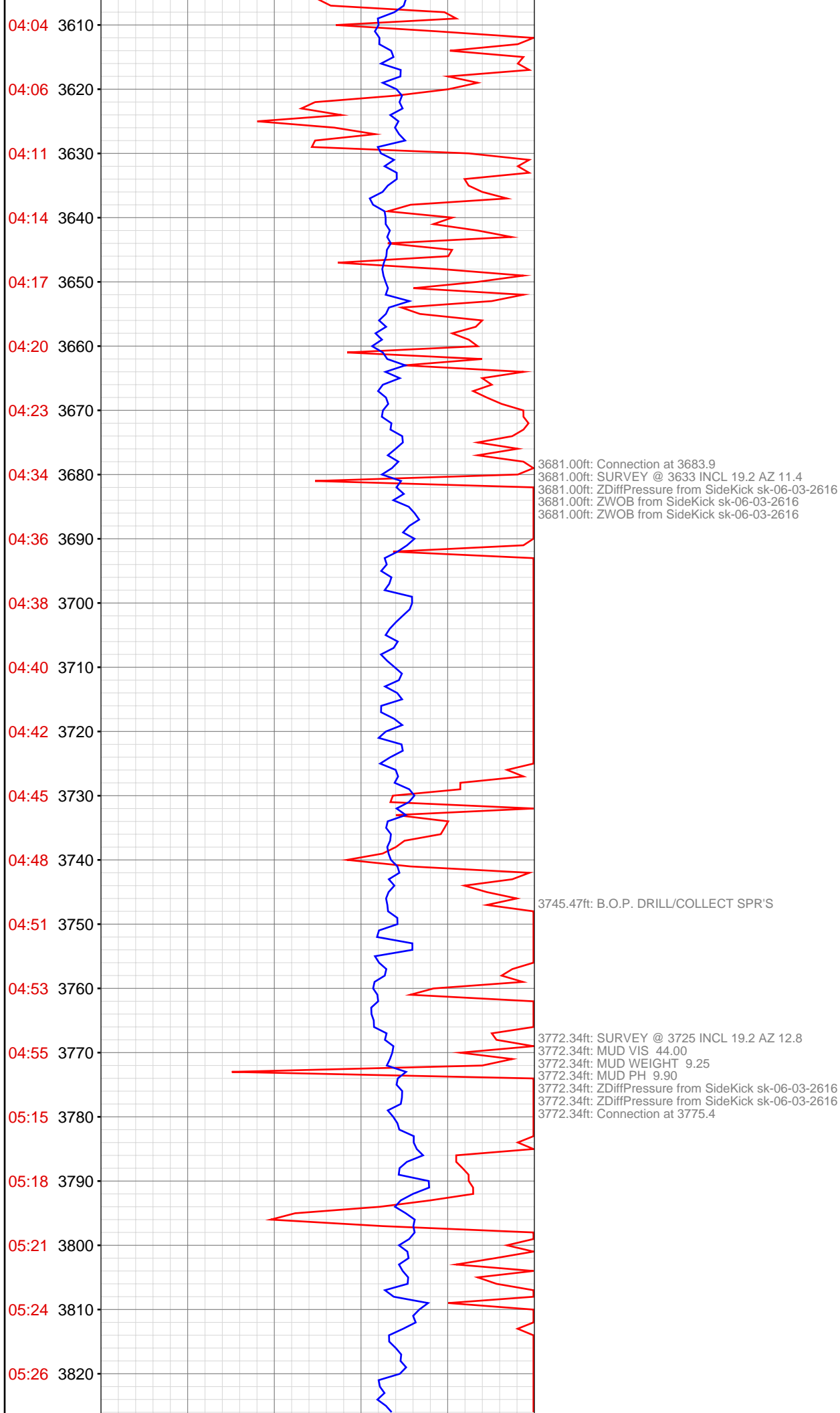


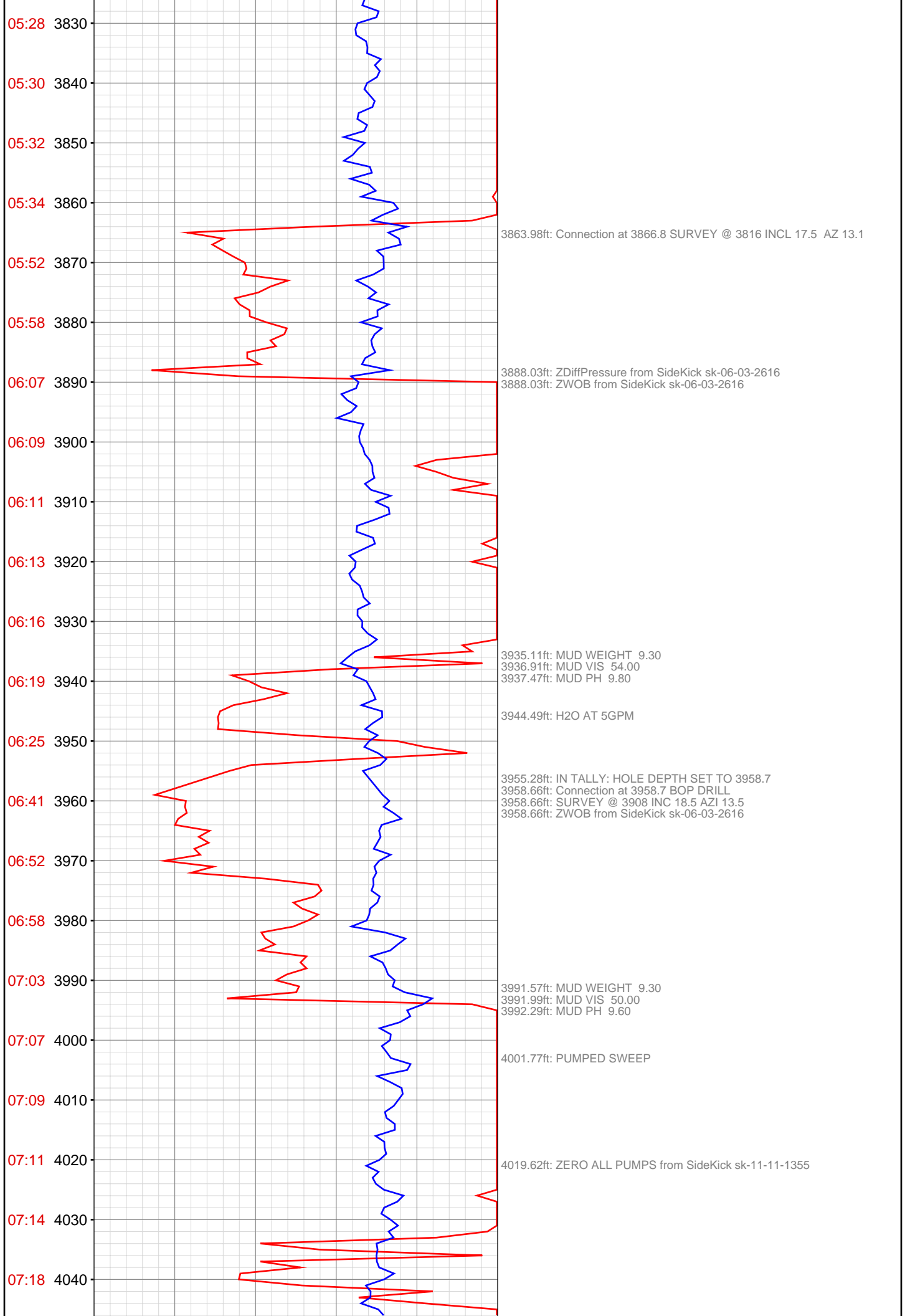


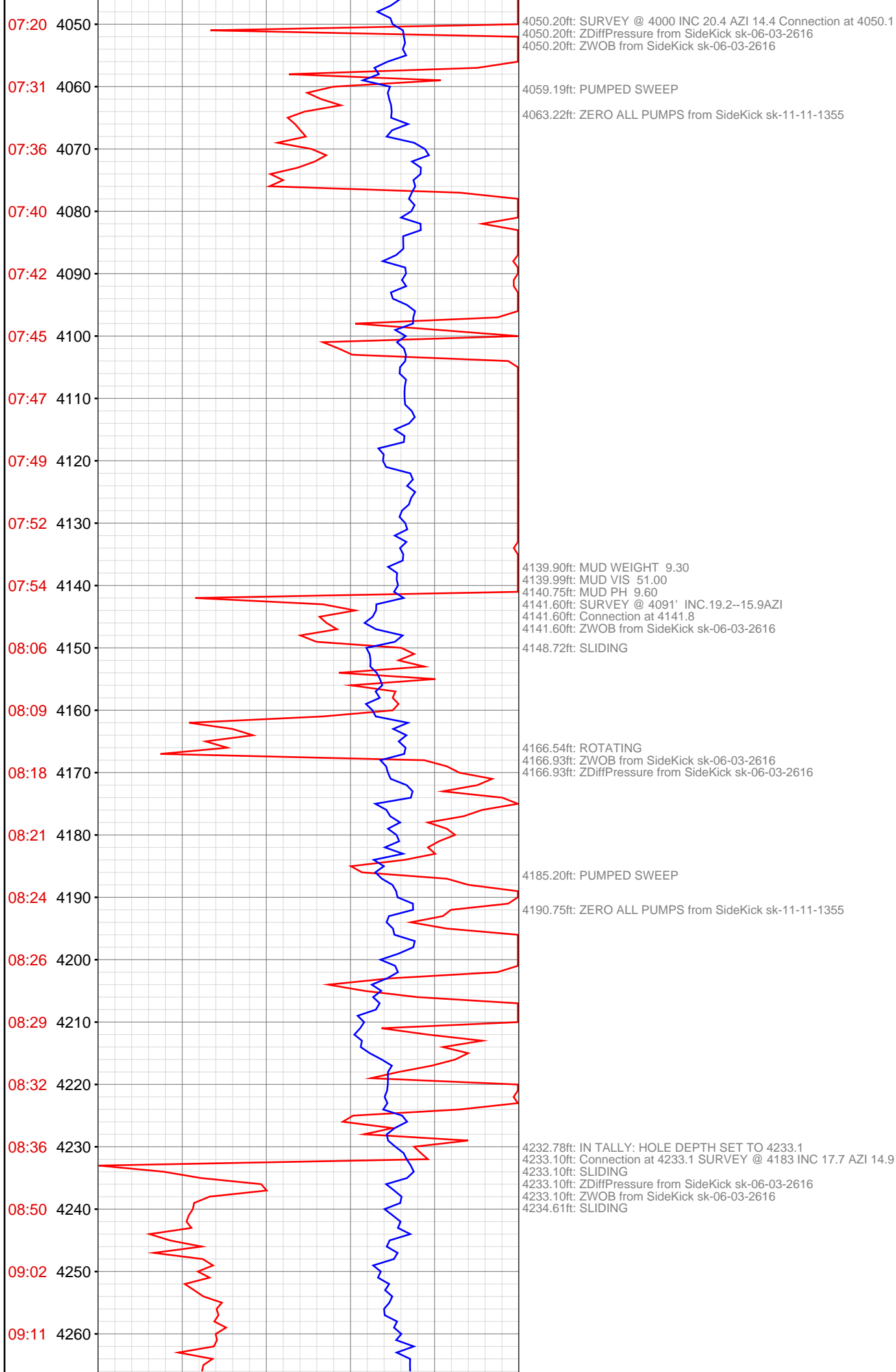


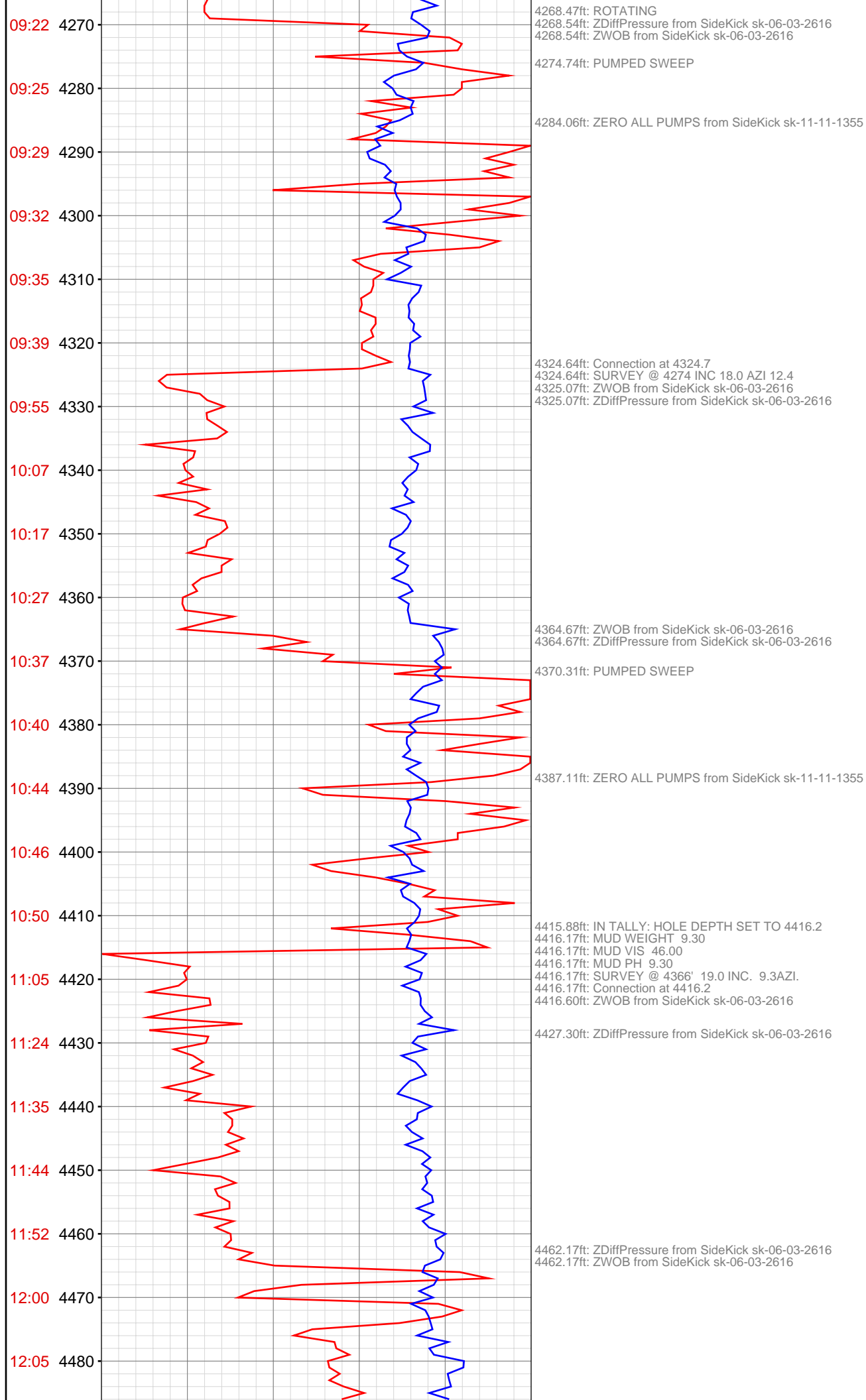


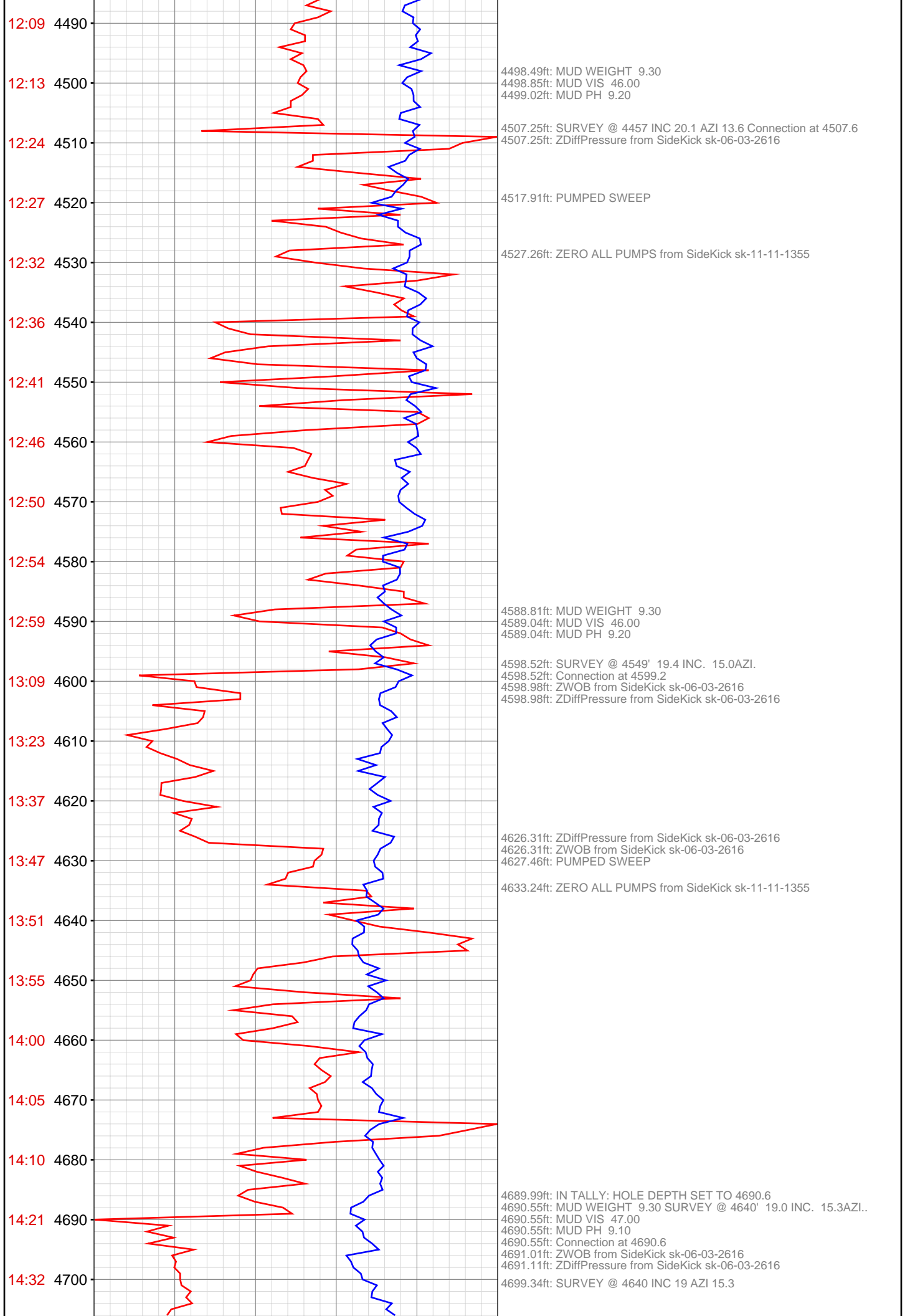


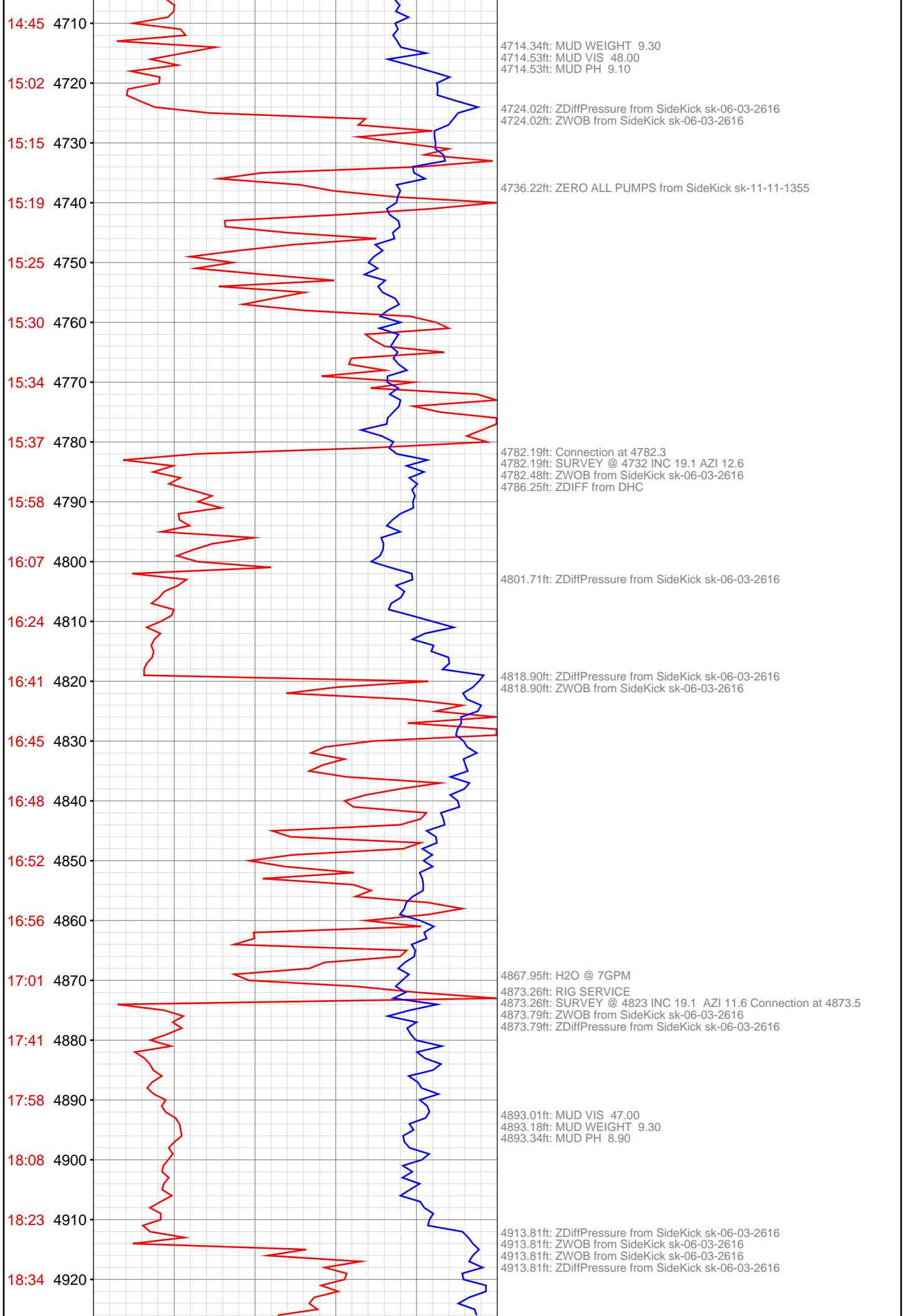


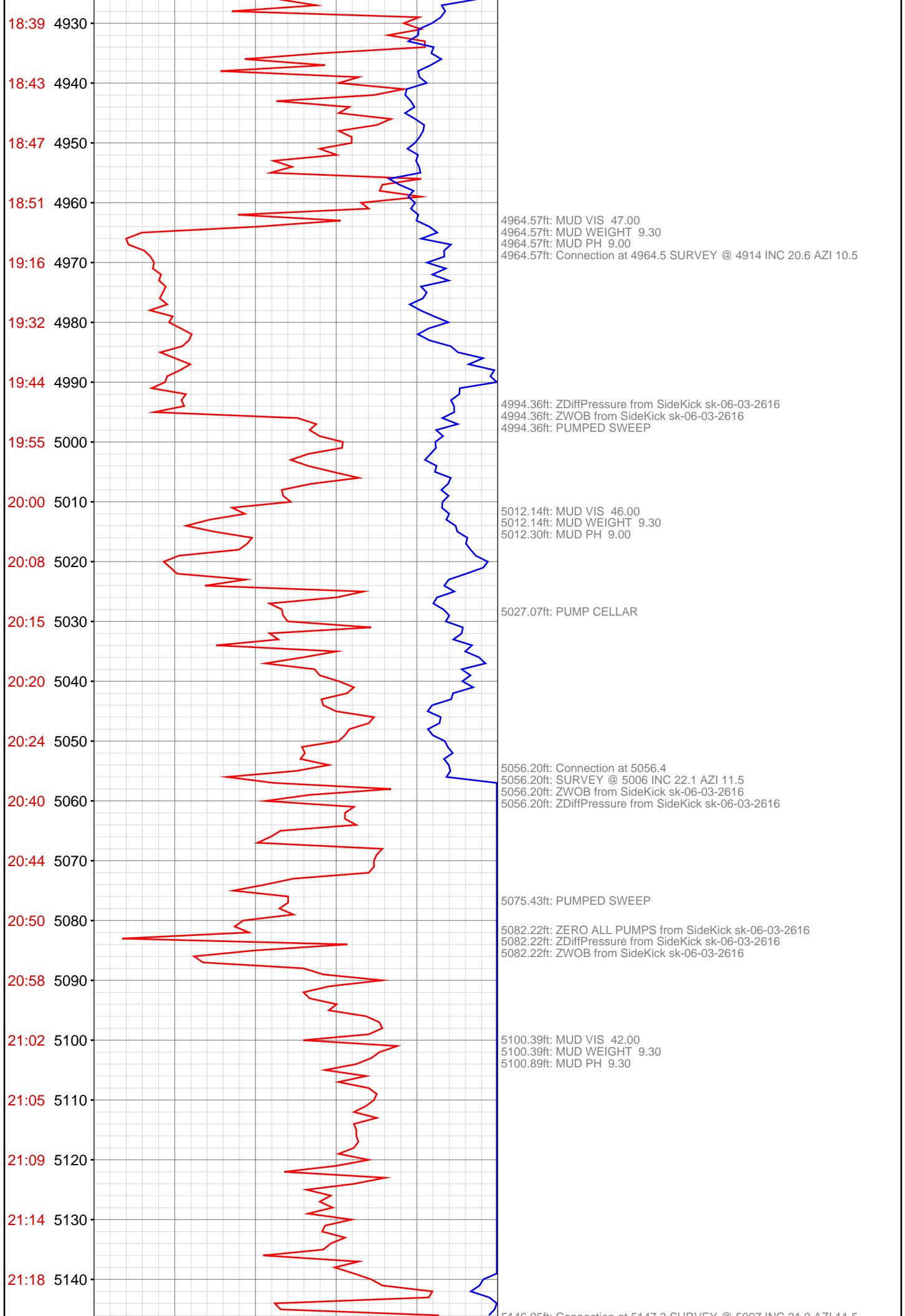












5146.95ft: Connection at 5147.3 SURVEY @ 5097 INC 21.0 AZI 11.5
5146.95ft: ZWOB from SideKick sk-06-03-2616
5146.95ft: ZDiffPressure from SideKick sk-06-03-2616

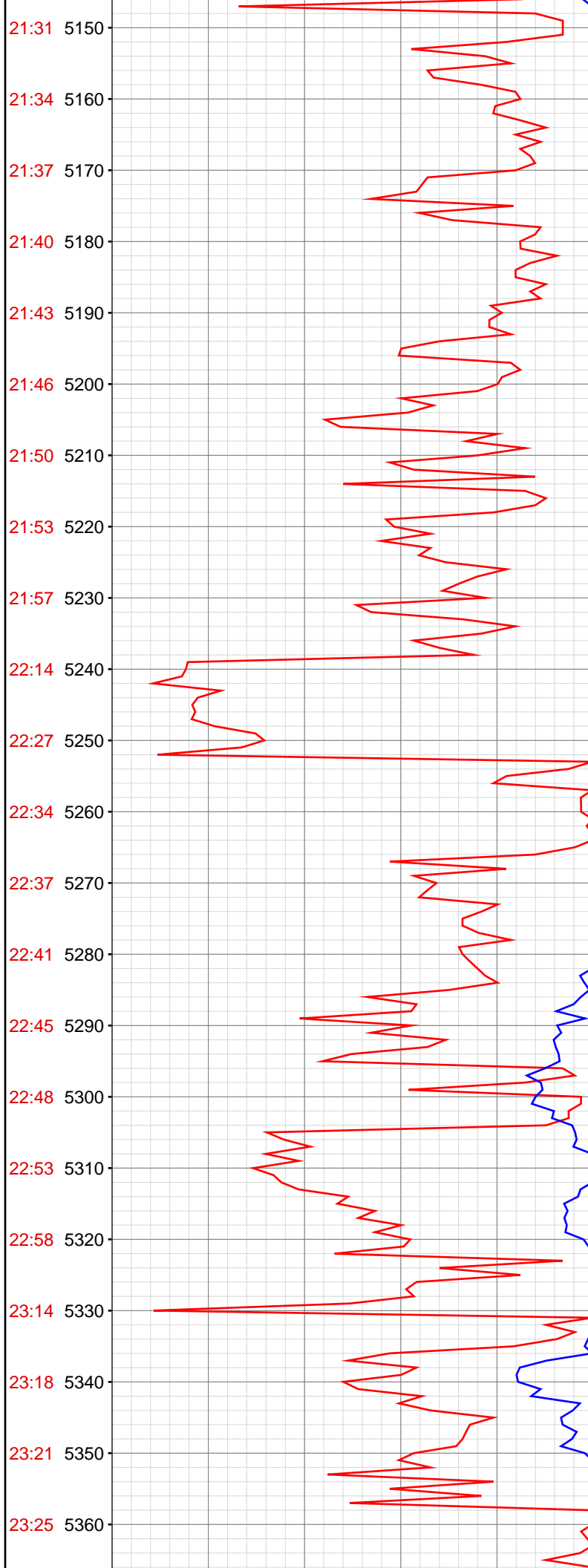
5238.06ft: MUD VIS 42.00
5238.06ft: MUD WEIGHT 9.30
5238.06ft: MUD PH 9.20
5238.06ft: Connection at 5238.6
5238.06ft: SURVEY @ 5186 INC 20.2 AZI 11.7

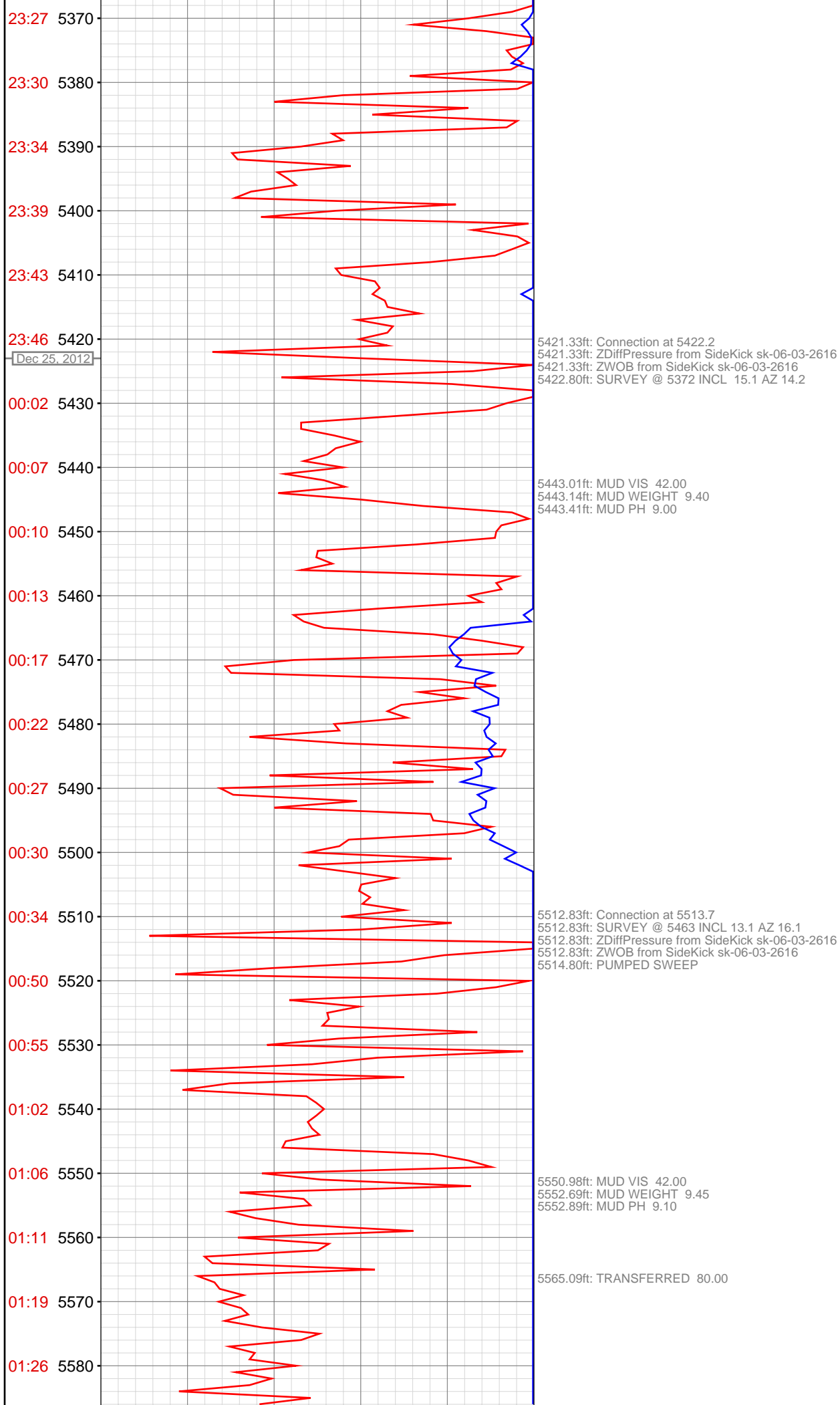
5251.97ft: ZDiffPressure from SideKick sk-06-03-2616
5251.97ft: ZWOB from SideKick sk-06-03-2616

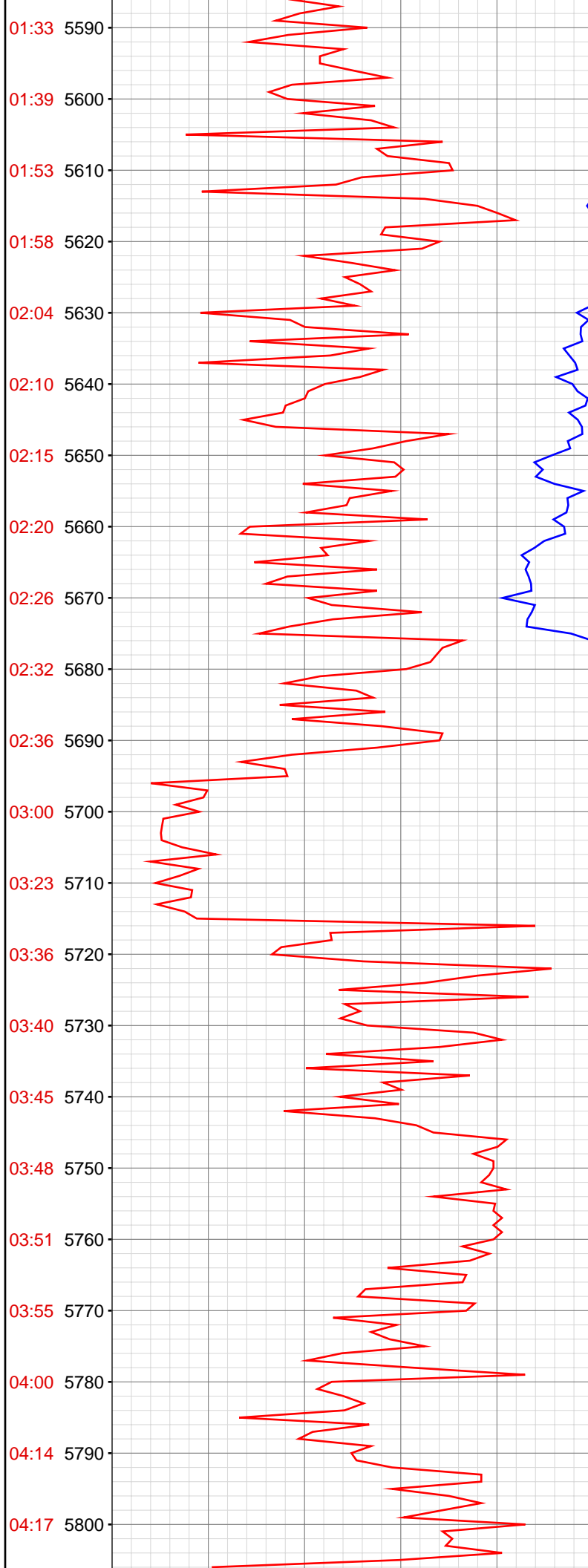
5320.24ft: MUD VIS 42.00
5320.67ft: MUD WEIGHT 9.30
5321.00ft: MUD PH 9.10

5329.92ft: SURVEY @ 5280 INCL 17.0 AZ 13.1
5329.92ft: Connection at 5330.5
5329.92ft: ZWOB from SideKick sk-06-03-2616
5329.92ft: ZDiffPressure from SideKick sk-06-03-2616

5336.81ft: TRANSFERRED 10.00





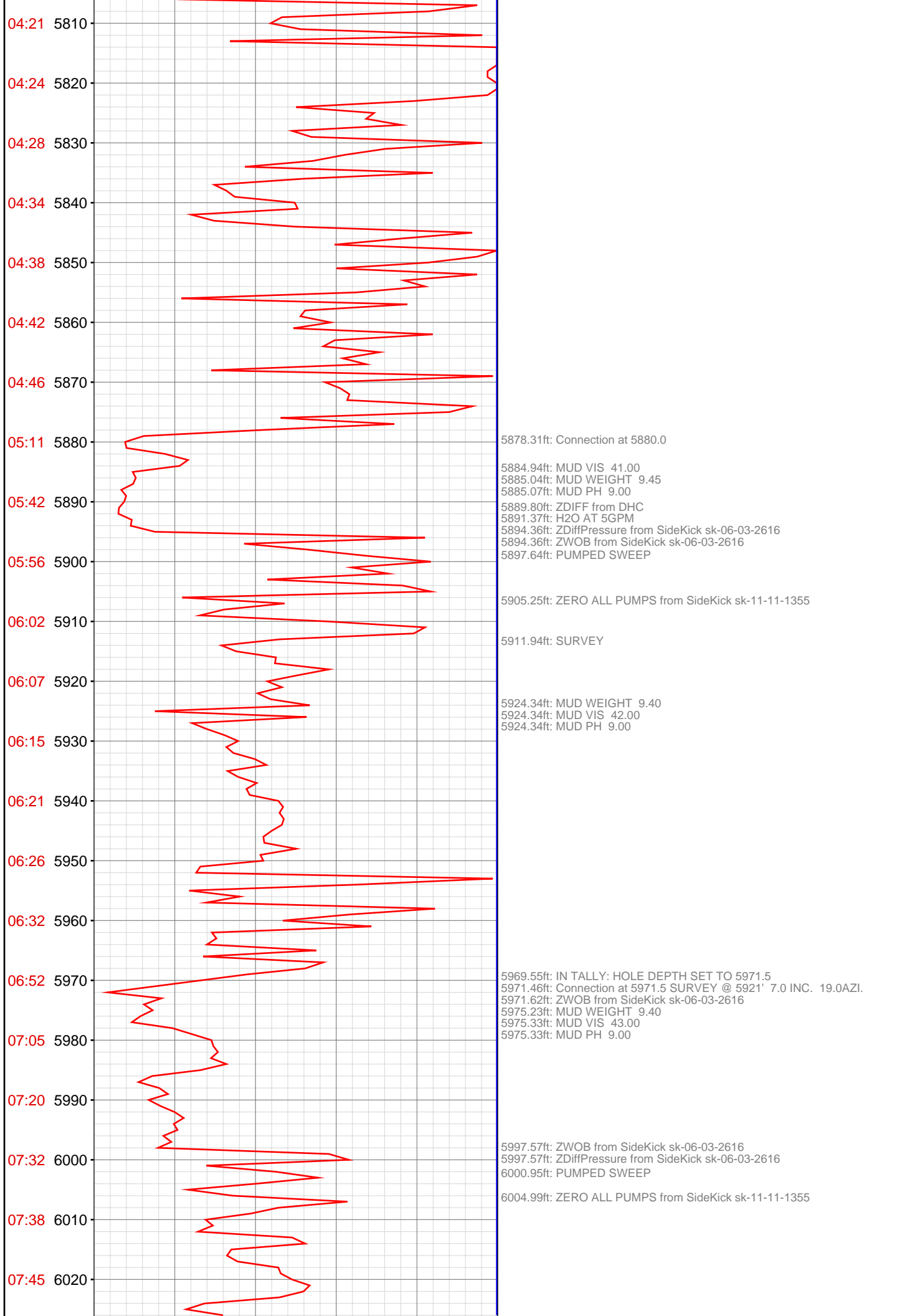


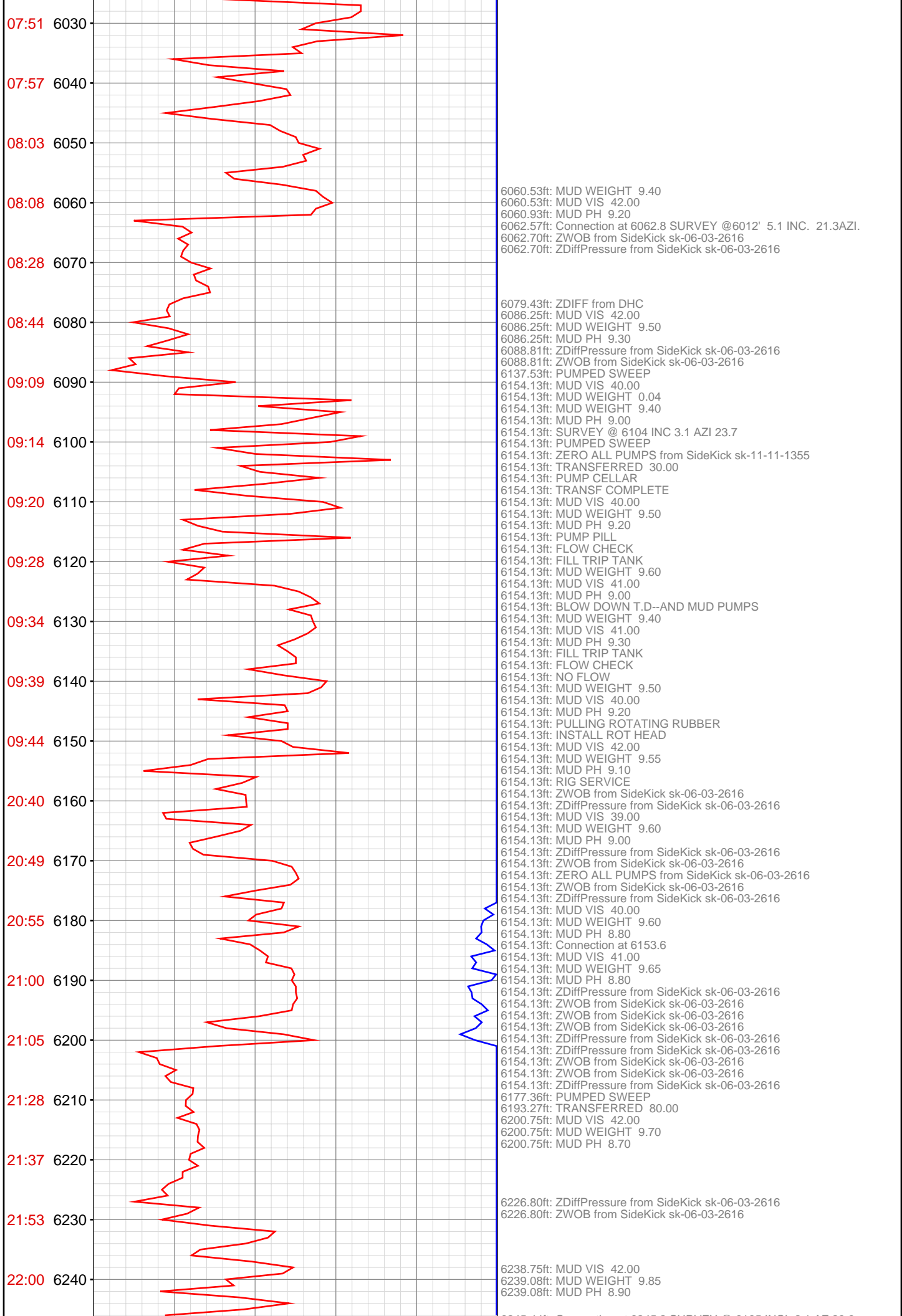
5604.17ft: Connection at 5605.1
5604.17ft: SURVEY @5555 INCL 11.8 AZ 16.6
5604.17ft: ZWOB from SideKick sk-06-03-2616
5604.17ft: ZDiffPressure from SideKick sk-06-03-2616

5637.73ft: MUD VIS 42.00
5638.12ft: MUD WEIGHT 9.40
5638.12ft: MUD PH 9.40

5695.74ft: SURVEY @ 5647 INCL 10.5 AZ 17.8
5695.74ft: Connection at 5697.0
5701.08ft: MUD VIS 42.00
5701.18ft: MUD WEIGHT 9.50
5701.28ft: MUD PH 9.20

5786.91ft: MUD VIS 42.00
5786.91ft: MUD WEIGHT 9.50
5786.91ft: MUD PH 9.10
5786.91ft: Connection at 5788.4
5786.91ft: SURVEY @ 5738 INCL 9.0 AZ 14.6
5786.91ft: ZDiffPressure from SideKick sk-06-03-2616
5786.91ft: ZWOB from SideKick sk-06-03-2616





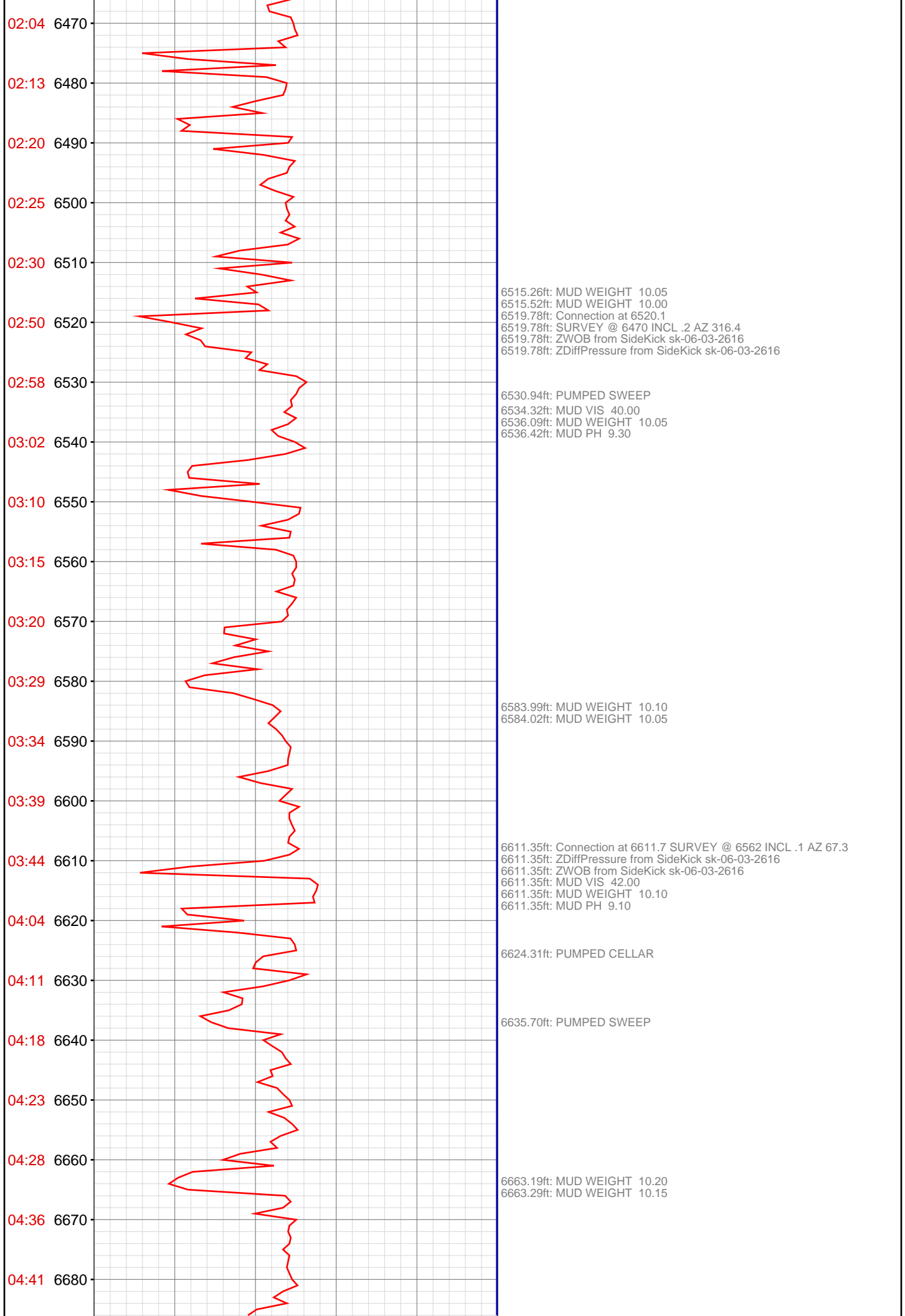
6318.01ft: MUD VIS 42.00
6318.01ft: MUD WEIGHT 9.80
6318.60ft: MUD PH 8.90

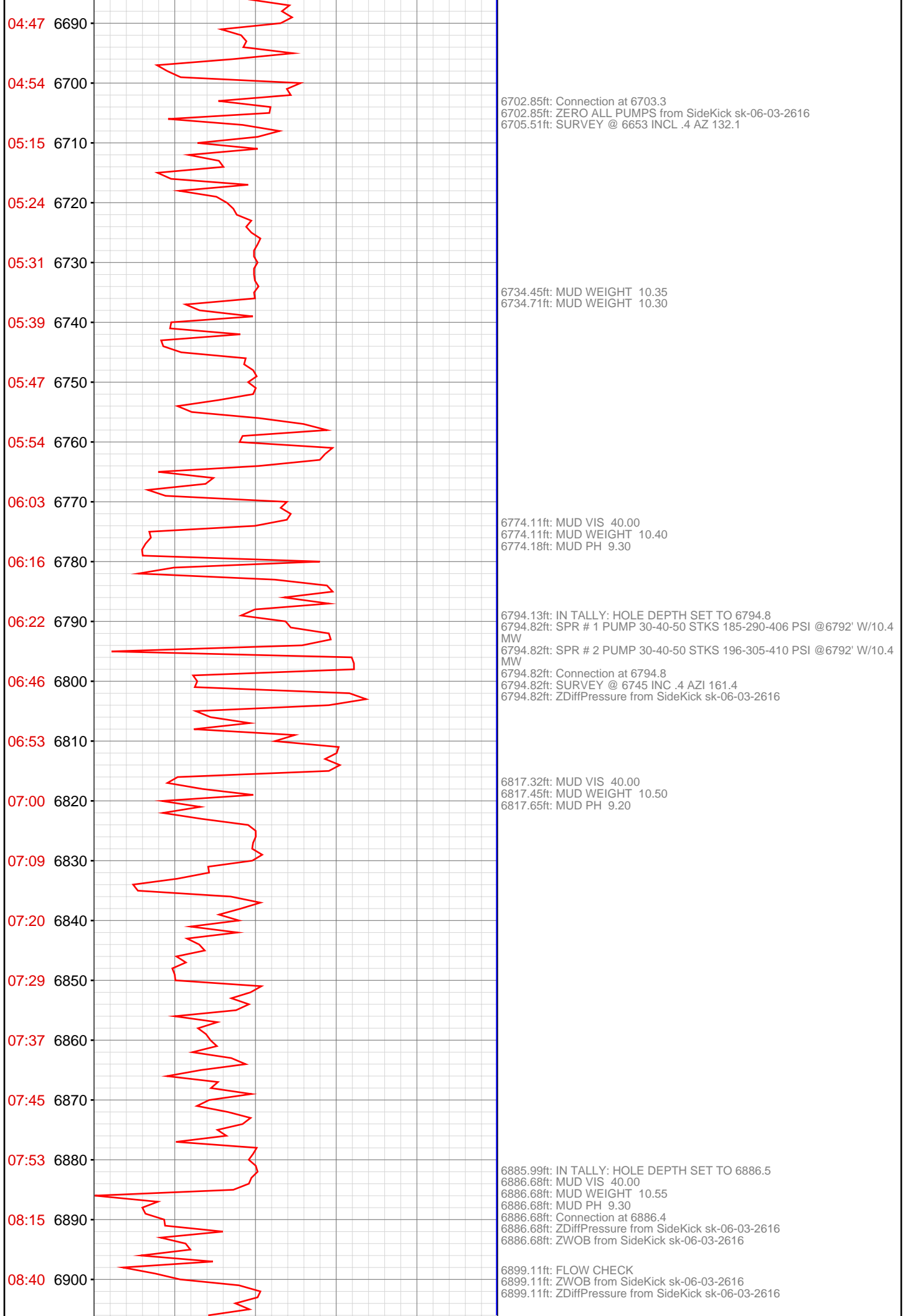
6336.58ft: Connection at 6336.5
6336.58ft: SURVEY @ 6287 INCL .9 AZ 319.2
6336.58ft: ZWOB from SideKick sk-06-03-2616
6336.58ft: ZDiffPressure from SideKick sk-06-03-2616
6339.40ft: PUMPED SWEEP

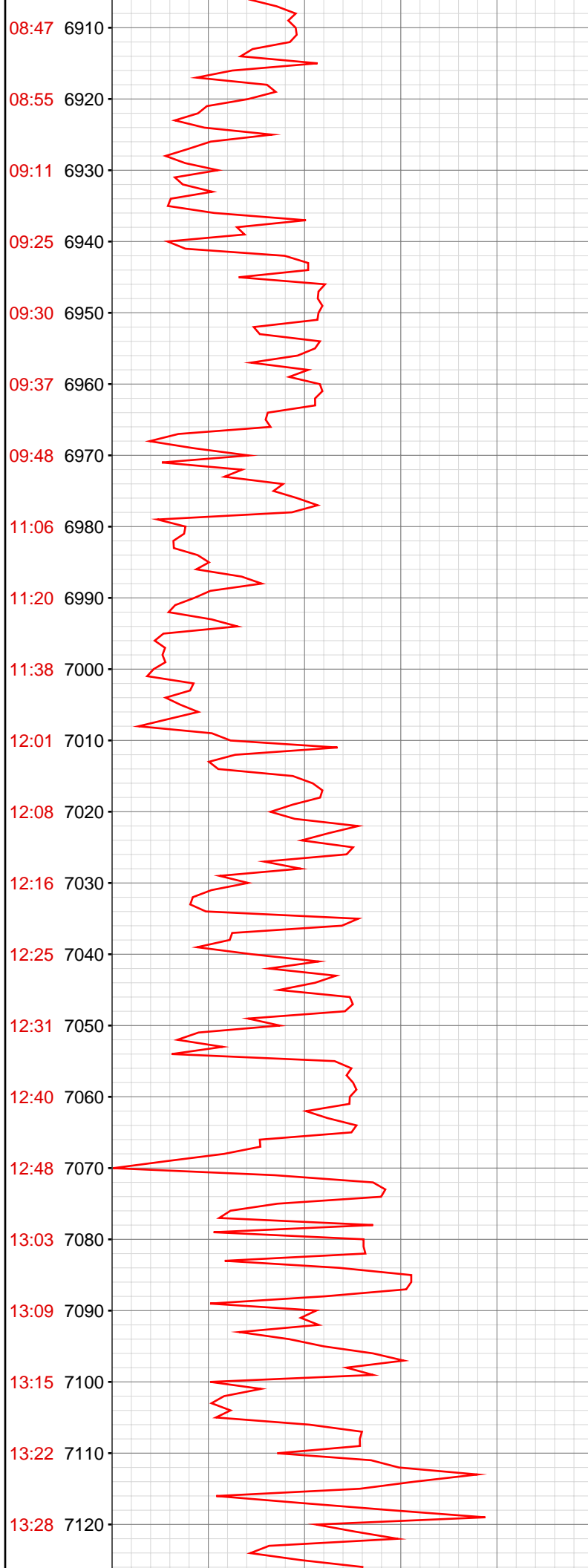
6412.73ft: MUD VIS 41.00
6413.06ft: MUD WEIGHT 9.90
6413.06ft: MUD PH 9.20
6428.08ft: MUD WEIGHT 9.55
6428.08ft: MUD WEIGHT 9.95
6428.08ft: MUD VIS 41.00
6428.08ft: MUD WEIGHT 9.95
6428.08ft: MUD PH 9.10
6428.08ft: Connection at 6428.2
6428.08ft: SURVEY @ 6378 INCL .7 AZ 322.8
6428.08ft: ZDiffPressure from SideKick sk-06-03-2616
6428.08ft: ZWOB from SideKick sk-06-03-2616
6431.27ft: MUD WEIGHT 10.00
6431.27ft: MUD WEIGHT 10.00

6442.06ft: PUMPED SWEEP

6455.18ft: MUD VIS 39.00
6455.41ft: MUD WEIGHT 10.00
6455.41ft: MUD PH 9.00







6924.21ft: MUD VIS 41.00
6924.54ft: MUD WEIGHT 10.80
6924.77ft: MUD PH 9.20

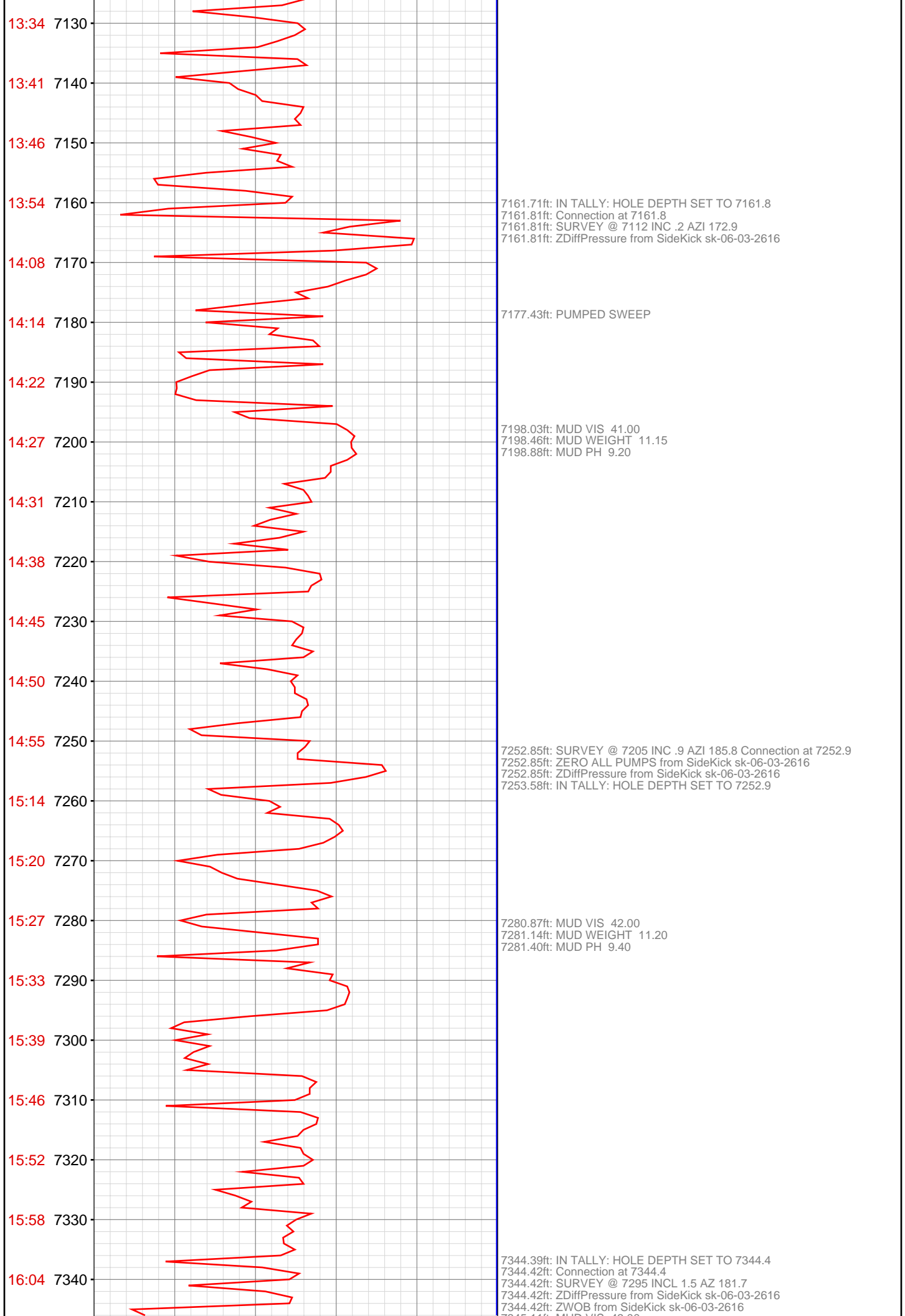
6978.12ft: IN TALLY: HOLE DEPTH SET TO 6978.2
6978.18ft: RIG SERVICE
6978.18ft: MUD VIS 41.00
6978.18ft: MUD WEIGHT 10.90
6978.18ft: MUD PH 9.40
6978.18ft: Connection at 6978.2
6978.18ft: ZDiffPressure from SideKick sk-06-03-2616
6978.18ft: ZWOB from SideKick sk-06-03-2616

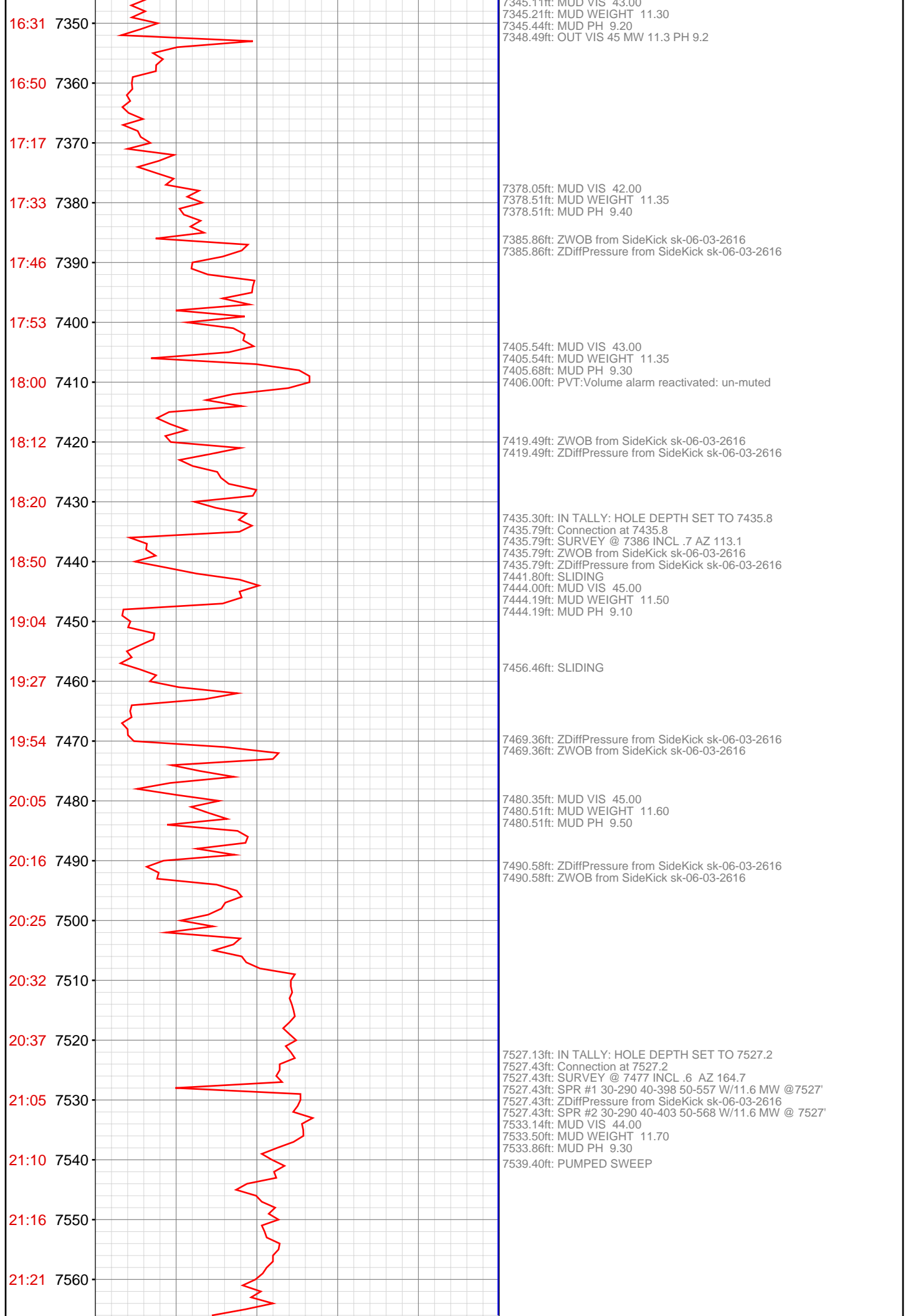
7004.66ft: MUD VIS 40.00
7004.79ft: MUD WEIGHT 10.95
7004.92ft: MUD PH 9.40
7007.78ft: ZWOB from SideKick sk-06-03-2616

7050.82ft: MUD VIS 41.00
7050.85ft: MUD WEIGHT 10.95
7050.92ft: MUD PH 9.40

7069.65ft: IN TALLY: HOLE DEPTH SET TO 7070.1
7070.08ft: Connection at 7070.1
7070.08ft: SURVEY @ 7020 INC .0 AZI 100.0
7070.08ft: ZWOB from SideKick sk-06-03-2616
7070.08ft: ZDiffPressure from SideKick sk-06-03-2616

7111.12ft: MUD VIS 41.00
7111.48ft: MUD WEIGHT 11.10
7111.48ft: MUD PH 9.30





21:28 7570
21:35 7580
21:41 7590
21:50 7600
21:56 7610
22:19 7620
22:25 7630
22:29 7640
22:34 7650
22:41 7660
22:49 7670
22:56 7680
23:01 7690
23:09 7700
23:14 7710
23:36 7720
23:42 7730
23:51 7740
23:59 7750
00:05 7760
00:12 7770
00:19 7780

7618.31ft: Connection at 7618.3
7618.31ft: SURVEY @ 7568 INCL .8 AZ 173.3
7618.31ft: ZDiffPressure from SideKick sk-06-03-2616
7618.50ft: IN TALLY: HOLE DEPTH SET TO 7618.3

7637.34ft: MUD VIS 45.00
7637.34ft: MUD WEIGHT 11.70
7637.73ft: MUD PH 9.00

7667.95ft: PUMPED SWEEP

7710.01ft: IN TALLY: HOLE DEPTH SET TO 7710.0
7710.01ft: CIRCULATE GAS
7710.01ft: Connection at 7710.0
7710.01ft: ZDiffPressure from SideKick sk-06-03-2616
7710.01ft: SURVEY @ 7752 INCL 1.2 AZ 182.0

7722.93ft: H2O @ 4 GPM
7727.26ft: MUD VIS 46.00
7727.26ft: MUD WEIGHT 11.75
7727.59ft: MUD PH 9.20
7730.35ft: PUMPED SWEEP

Dec 27, 2012

