

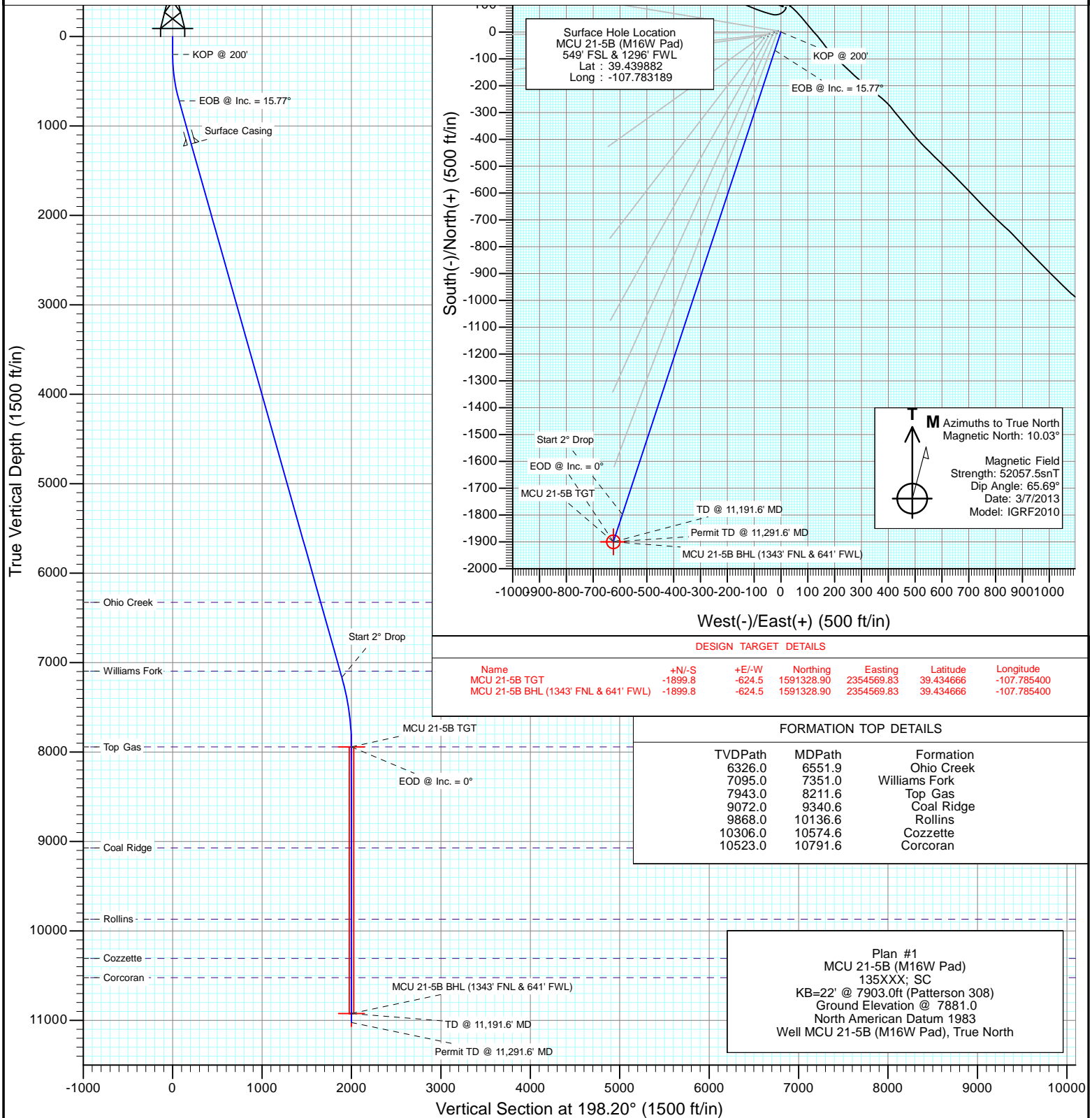


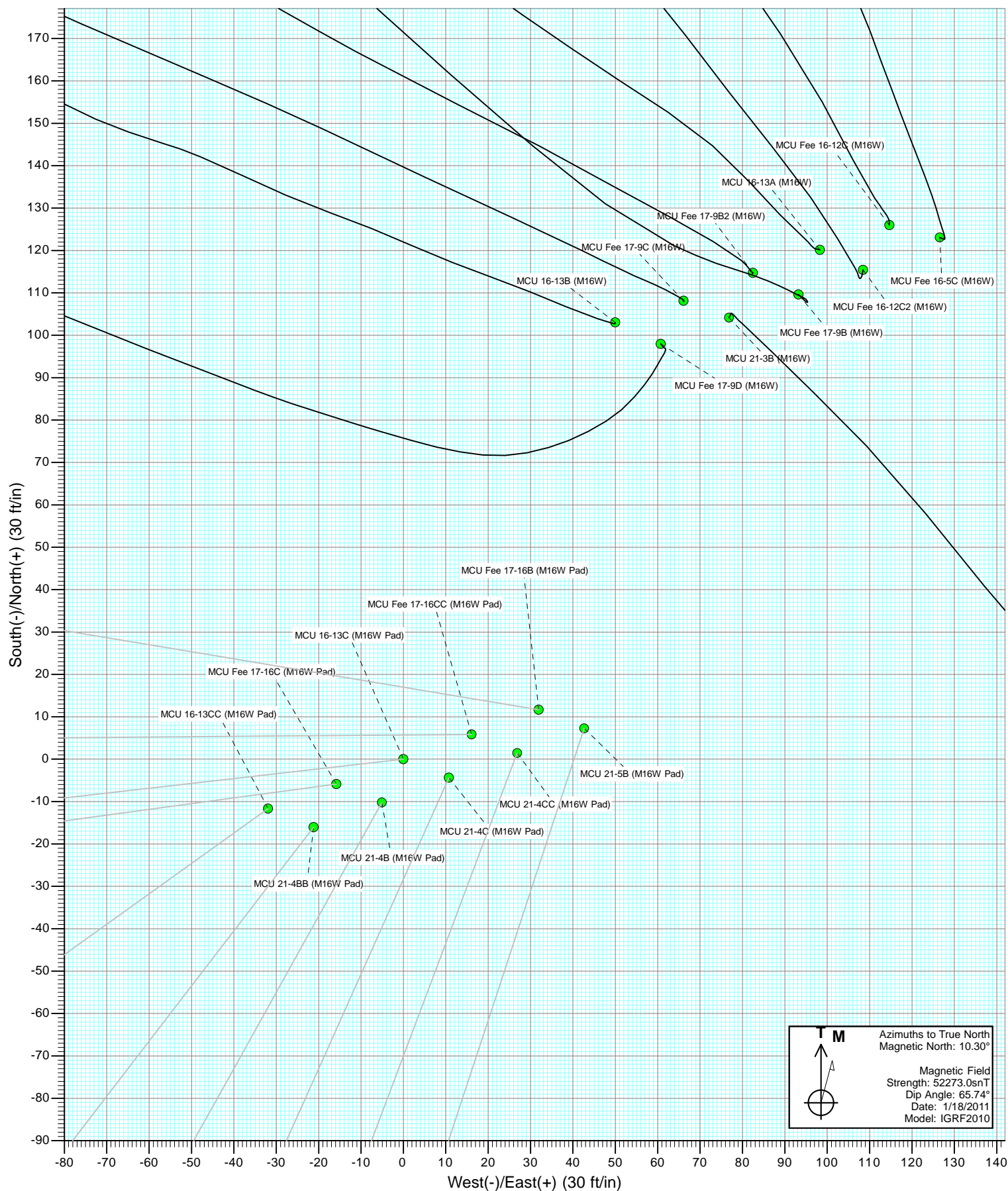
Project: Mamm Creek  
Site: M16W Pad (SWSW S16-T7S-R93W)  
Well: MCU 21-5B (M16W Pad)  
Wellbore: DD  
Design: Plan #1

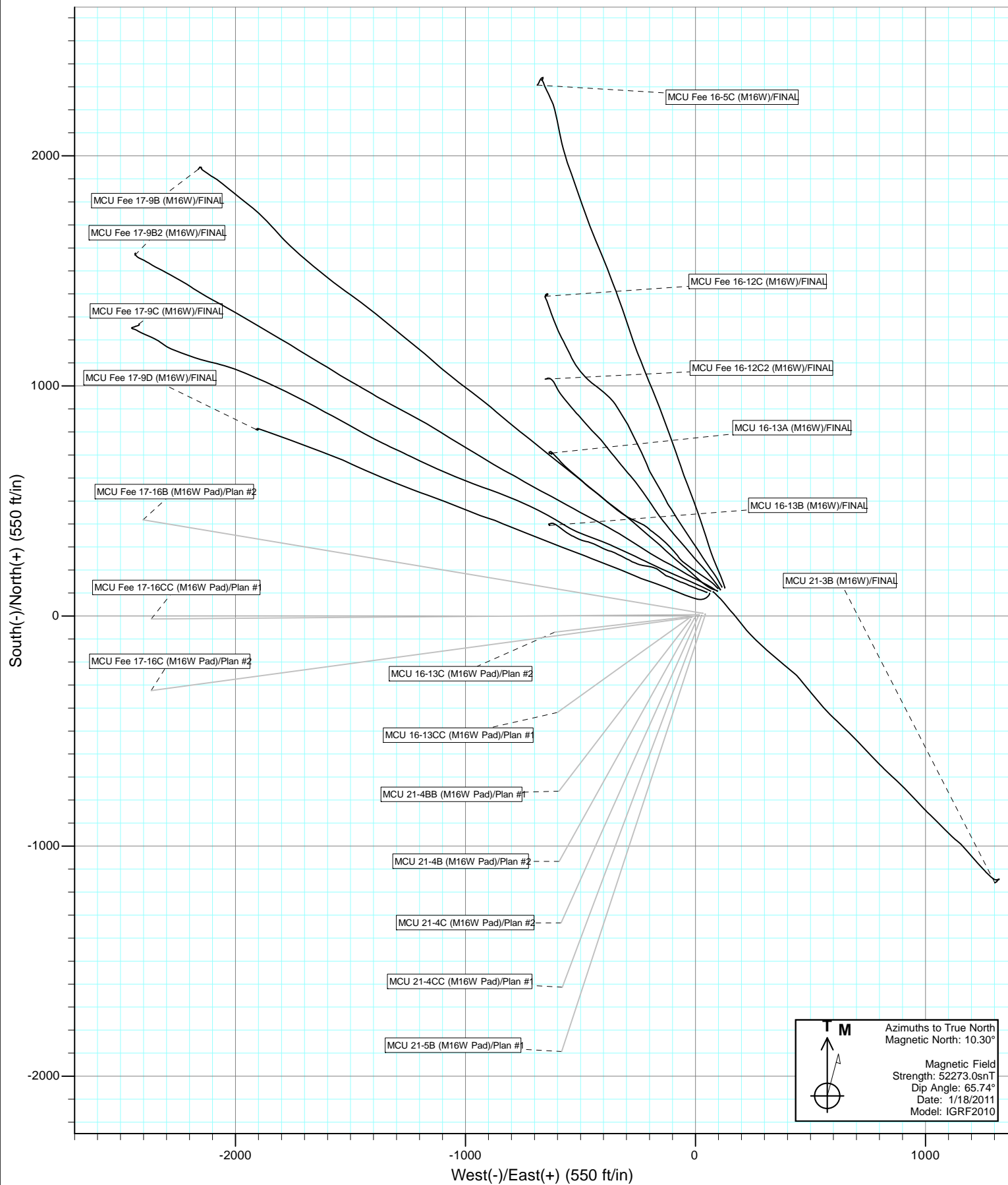


#### SECTION DETAILS

Sec	MD	Inc	Azi	TVD	+N/-S	+E/-W	Dleg	TFace	VSec	Target
1	0.0	0.00	0.00	0.0	0.0	0.0	0.00	0.00	0.0	
2	200.0	0.00	0.00	200.0	0.0	0.0	0.00	0.00	0.0	
3	725.6	15.77	198.20	719.0	-68.3	-22.4	3.00	198.20	71.9	
4	7423.1	15.77	198.20	7164.5	-1797.4	-590.8	0.00	0.00	1892.0	
5	8211.6	0.00	0.00	7943.0	-1899.8	-624.5	2.00	180.00	1999.8	MCU 21-5B TGT
6	11191.6	0.00	0.00	10923.0	-1899.8	-624.5	0.00	0.00	1999.8	MCU 21-5B BHL (1343' FNL & 641' FWL)
7	11291.6	0.00	0.00	11023.0	-1899.8	-624.5	0.00	0.00	1999.8	

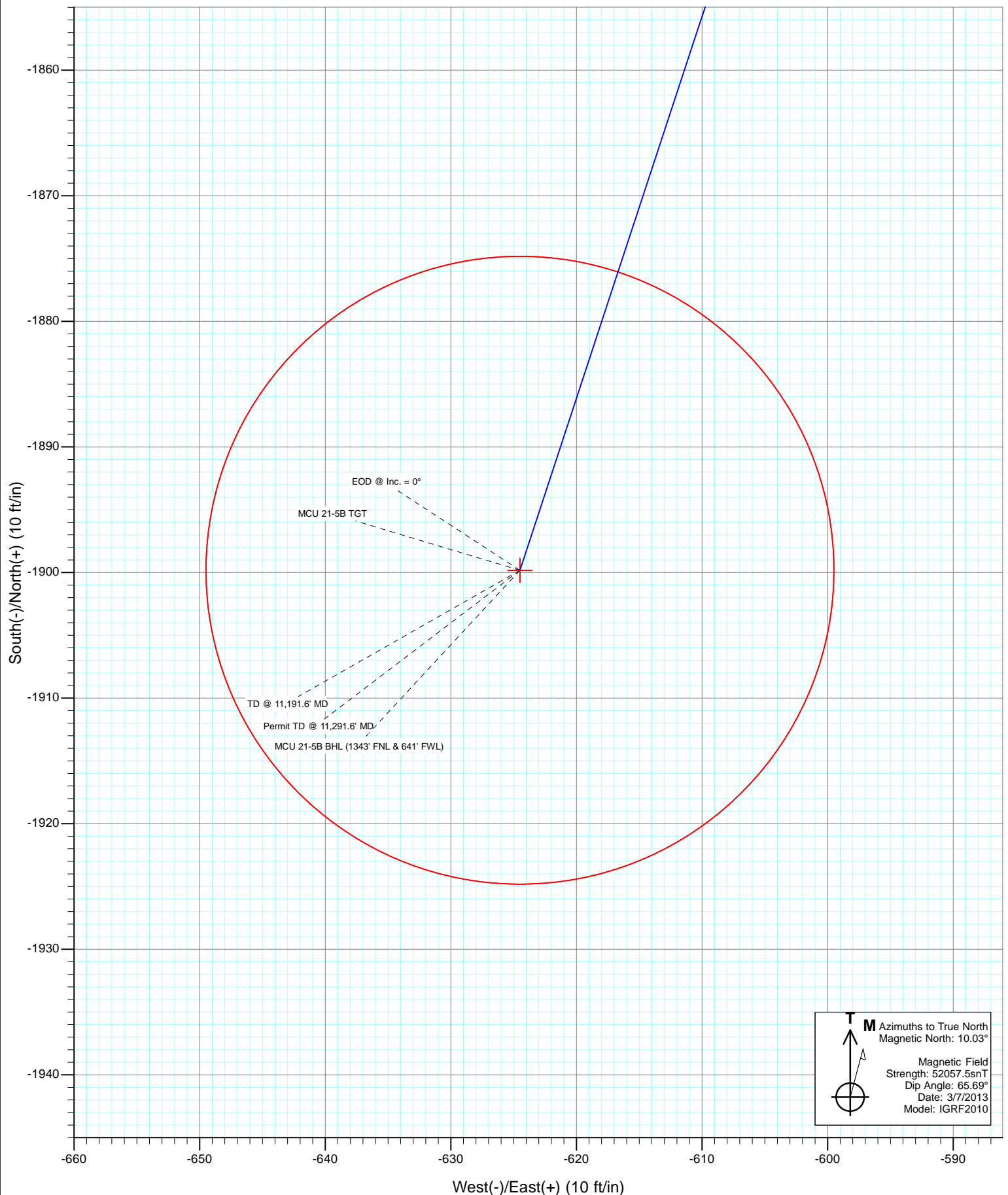








Project: Mamm Creek  
Site: M16W Pad (SWSW S16-T7S-R93W)  
Well: MCU 21-5B (M16W Pad)  
Wellbore: DD  
Design: Plan #1



# Cathedral Energy Services

## Planning Report

<b>Database:</b>	USA EDM 5000 Multi Users DB	<b>Local Co-ordinate Reference:</b>	Well MCU 21-5B (M16W Pad)
<b>Company:</b>	EnCana Oil & Gas (USA) Inc	<b>TVD Reference:</b>	KB=22' @ 7903.0ft (Patterson 308)
<b>Project:</b>	Mamm Creek	<b>MD Reference:</b>	KB=22' @ 7903.0ft (Patterson 308)
<b>Site:</b>	M16W Pad (SWSW S16-T7S-R93W)	<b>North Reference:</b>	True
<b>Well:</b>	MCU 21-5B (M16W Pad)	<b>Survey Calculation Method:</b>	Minimum Curvature
<b>Wellbore:</b>	DD		
<b>Design:</b>	Plan #1		

<b>Project</b>	Mamm Creek		
<b>Map System:</b>	US State Plane 1983	<b>System Datum:</b>	Mean Sea Level
<b>Geo Datum:</b>	North American Datum 1983		
<b>Map Zone:</b>	Colorado Central Zone		

Site	M16W Pad (SWSW S16-T7S-R93W)				
Site Position:		Northing:	1,593,196.15 ft	Latitude:	39.439834
From:	Lat/Long	Easting:	2,355,193.71 ft	Longitude:	-107.783358
Position Uncertainty:	0.0 ft	Slot Radius:	13.200 in	Grid Convergence:	-1.44 °

Well	MCU 21-5B (M16W Pad)					
Well Position	+N/-S	0.0 ft	Northing:	1,593,212.43 ft	Latitude:	39.439882
	+E/-W	0.0 ft	Easting:	2,355,241.87 ft	Longitude:	-107.783189
Position Uncertainty		0.0 ft	Wellhead Elevation:	ft	Ground Level:	7,881.0 ft

<b>Wellbore</b>	DD				
<b>Magnetics</b>	<b>Model Name</b>	<b>Sample Date</b>	<b>Declination (°)</b>	<b>Dip Angle (°)</b>	<b>Field Strength (nT)</b>
	IGRF2010	3/7/2013	10.03	65.69	52,058

<b>Design</b>	Plan #1				
<b>Audit Notes:</b>					
<b>Version:</b>	<b>Phase:</b>	PLAN		<b>Tie On Depth:</b>	0.0
<b>Vertical Section:</b>	<b>Depth From (TVD) (ft)</b>	<b>+N/-S (ft)</b>	<b>+E/-W (ft)</b>	<b>Direction (°)</b>	
	0.0	0.0	0.0	198.20	

<b>Plan Sections</b>										
Measured Depth (ft)	Inclination (°)	Azimuth (°)	Vertical Depth (ft)	+N/-S (ft)	+E/-W (ft)	Dogleg Rate (°/100ft)	Build Rate (°/100ft)	Turn Rate (°/100ft)	TFO (°)	Target
0.0	0.00	0.00	0.0	0.0	0.0	0.00	0.00	0.00	0.00	
200.0	0.00	0.00	200.0	0.0	0.0	0.00	0.00	0.00	0.00	
725.6	15.77	198.20	719.0	-68.3	-22.4	3.00	3.00	0.00	198.20	
7,423.1	15.77	198.20	7,164.5	-1,797.4	-590.8	0.00	0.00	0.00	0.00	
8,211.6	0.00	0.00	7,943.0	-1,899.8	-624.5	2.00	-2.00	0.00	180.00	MCU 21-5B TGT
11,191.6	0.00	0.00	10,923.0	-1,899.8	-624.5	0.00	0.00	0.00	0.00	MCU 21-5B BHL (134
11,291.6	0.00	0.00	11,023.0	-1,899.8	-624.5	0.00	0.00	0.00	0.00	

# Cathedral Energy Services

## Planning Report

<b>Database:</b>	USA EDM 5000 Multi Users DB	<b>Local Co-ordinate Reference:</b>	Well MCU 21-5B (M16W Pad)
<b>Company:</b>	EnCana Oil & Gas (USA) Inc	<b>TVD Reference:</b>	KB=22' @ 7903.0ft (Patterson 308)
<b>Project:</b>	Mamm Creek	<b>MD Reference:</b>	KB=22' @ 7903.0ft (Patterson 308)
<b>Site:</b>	M16W Pad (SWSW S16-T7S-R93W)	<b>North Reference:</b>	True
<b>Well:</b>	MCU 21-5B (M16W Pad)	<b>Survey Calculation Method:</b>	Minimum Curvature
<b>Wellbore:</b>	DD		
<b>Design:</b>	Plan #1		

### Planned Survey

Measured Depth (ft)	Inclination (°)	Azimuth (°)	Vertical Depth (ft)	+N/-S (ft)	+E/-W (ft)	Vertical Section (ft)	Dogleg Rate (°/100ft)	Build Rate (°/100ft)	Comments / Formations
0.0	0.00	0.00	0.0	0.0	0.0	0.0	0.00	0.00	
100.0	0.00	0.00	100.0	0.0	0.0	0.0	0.00	0.00	
200.0	0.00	0.00	200.0	0.0	0.0	0.0	0.00	0.00	KOP @ 200'
300.0	3.00	198.20	300.0	-2.5	-0.8	2.6	3.00	3.00	
400.0	6.00	198.20	399.6	-9.9	-3.3	10.5	3.00	3.00	
500.0	9.00	198.20	498.8	-22.3	-7.3	23.5	3.00	3.00	
600.0	12.00	198.20	597.1	-39.6	-13.0	41.7	3.00	3.00	
700.0	15.00	198.20	694.3	-61.8	-20.3	65.1	3.00	3.00	
725.6	15.77	198.20	719.0	-68.3	-22.4	71.9	3.00	3.00	EOB @ Inc. = 15.77°
800.0	15.77	198.20	790.6	-87.5	-28.8	92.1	0.00	0.00	
900.0	15.77	198.20	886.8	-113.3	-37.2	119.3	0.00	0.00	
1,000.0	15.77	198.20	983.1	-139.1	-45.7	146.4	0.00	0.00	
1,100.0	15.77	198.20	1,079.3	-164.9	-54.2	173.6	0.00	0.00	
1,200.0	15.77	198.20	1,175.5	-190.8	-62.7	200.8	0.00	0.00	
1,225.4	15.77	198.20	1,200.0	-197.3	-64.9	207.7	0.00	0.00	Surface Casing
1,300.0	15.77	198.20	1,271.8	-216.6	-71.2	228.0	0.00	0.00	
1,400.0	15.77	198.20	1,368.0	-242.4	-79.7	255.1	0.00	0.00	
1,500.0	15.77	198.20	1,464.2	-268.2	-88.2	282.3	0.00	0.00	
1,600.0	15.77	198.20	1,560.5	-294.0	-96.6	309.5	0.00	0.00	
1,700.0	15.77	198.20	1,656.7	-319.8	-105.1	336.7	0.00	0.00	
1,800.0	15.77	198.20	1,753.0	-345.7	-113.6	363.9	0.00	0.00	
1,900.0	15.77	198.20	1,849.2	-371.5	-122.1	391.0	0.00	0.00	
2,000.0	15.77	198.20	1,945.4	-397.3	-130.6	418.2	0.00	0.00	
2,100.0	15.77	198.20	2,041.7	-423.1	-139.1	445.4	0.00	0.00	
2,200.0	15.77	198.20	2,137.9	-448.9	-147.6	472.6	0.00	0.00	
2,300.0	15.77	198.20	2,234.1	-474.7	-156.1	499.7	0.00	0.00	
2,400.0	15.77	198.20	2,330.4	-500.6	-164.5	526.9	0.00	0.00	
2,500.0	15.77	198.20	2,426.6	-526.4	-173.0	554.1	0.00	0.00	
2,600.0	15.77	198.20	2,522.8	-552.2	-181.5	581.3	0.00	0.00	
2,700.0	15.77	198.20	2,619.1	-578.0	-190.0	608.4	0.00	0.00	
2,800.0	15.77	198.20	2,715.3	-603.8	-198.5	635.6	0.00	0.00	
2,900.0	15.77	198.20	2,811.6	-629.6	-207.0	662.8	0.00	0.00	
3,000.0	15.77	198.20	2,907.8	-655.5	-215.5	690.0	0.00	0.00	
3,100.0	15.77	198.20	3,004.0	-681.3	-223.9	717.1	0.00	0.00	
3,200.0	15.77	198.20	3,100.3	-707.1	-232.4	744.3	0.00	0.00	
3,300.0	15.77	198.20	3,196.5	-732.9	-240.9	771.5	0.00	0.00	
3,400.0	15.77	198.20	3,292.7	-758.7	-249.4	798.7	0.00	0.00	
3,500.0	15.77	198.20	3,389.0	-784.5	-257.9	825.8	0.00	0.00	
3,600.0	15.77	198.20	3,485.2	-810.4	-266.4	853.0	0.00	0.00	
3,700.0	15.77	198.20	3,581.4	-836.2	-274.9	880.2	0.00	0.00	
3,800.0	15.77	198.20	3,677.7	-862.0	-283.3	907.4	0.00	0.00	
3,900.0	15.77	198.20	3,773.9	-887.8	-291.8	934.6	0.00	0.00	
4,000.0	15.77	198.20	3,870.2	-913.6	-300.3	961.7	0.00	0.00	
4,100.0	15.77	198.20	3,966.4	-939.5	-308.8	988.9	0.00	0.00	
4,200.0	15.77	198.20	4,062.6	-965.3	-317.3	1,016.1	0.00	0.00	
4,300.0	15.77	198.20	4,158.9	-991.1	-325.8	1,043.3	0.00	0.00	
4,400.0	15.77	198.20	4,255.1	-1,016.9	-334.3	1,070.4	0.00	0.00	
4,500.0	15.77	198.20	4,351.3	-1,042.7	-342.8	1,097.6	0.00	0.00	
4,600.0	15.77	198.20	4,447.6	-1,068.5	-351.2	1,124.8	0.00	0.00	
4,700.0	15.77	198.20	4,543.8	-1,094.4	-359.7	1,152.0	0.00	0.00	
4,800.0	15.77	198.20	4,640.0	-1,120.2	-368.2	1,179.1	0.00	0.00	
4,900.0	15.77	198.20	4,736.3	-1,146.0	-376.7	1,206.3	0.00	0.00	

# Cathedral Energy Services

## Planning Report

<b>Database:</b>	USA EDM 5000 Multi Users DB	<b>Local Co-ordinate Reference:</b>	Well MCU 21-5B (M16W Pad)
<b>Company:</b>	EnCana Oil & Gas (USA) Inc	<b>TVD Reference:</b>	KB=22' @ 7903.0ft (Patterson 308)
<b>Project:</b>	Mamm Creek	<b>MD Reference:</b>	KB=22' @ 7903.0ft (Patterson 308)
<b>Site:</b>	M16W Pad (SWSW S16-T7S-R93W)	<b>North Reference:</b>	True
<b>Well:</b>	MCU 21-5B (M16W Pad)	<b>Survey Calculation Method:</b>	Minimum Curvature
<b>Wellbore:</b>	DD		
<b>Design:</b>	Plan #1		

### Planned Survey

Measured Depth (ft)	Inclination (°)	Azimuth (°)	Vertical Depth (ft)	+N/-S (ft)	+E/-W (ft)	Vertical Section (ft)	Dogleg Rate (°/100ft)	Build Rate (°/100ft)	Comments / Formations
5,000.0	15.77	198.20	4,832.5	-1,171.8	-385.2	1,233.5	0.00	0.00	
5,100.0	15.77	198.20	4,928.8	-1,197.6	-393.7	1,260.7	0.00	0.00	
5,200.0	15.77	198.20	5,025.0	-1,223.4	-402.2	1,287.8	0.00	0.00	
5,300.0	15.77	198.20	5,121.2	-1,249.3	-410.6	1,315.0	0.00	0.00	
5,400.0	15.77	198.20	5,217.5	-1,275.1	-419.1	1,342.2	0.00	0.00	
5,500.0	15.77	198.20	5,313.7	-1,300.9	-427.6	1,369.4	0.00	0.00	
5,600.0	15.77	198.20	5,409.9	-1,326.7	-436.1	1,396.5	0.00	0.00	
5,700.0	15.77	198.20	5,506.2	-1,352.5	-444.6	1,423.7	0.00	0.00	
5,800.0	15.77	198.20	5,602.4	-1,378.3	-453.1	1,450.9	0.00	0.00	
5,900.0	15.77	198.20	5,698.6	-1,404.2	-461.6	1,478.1	0.00	0.00	
6,000.0	15.77	198.20	5,794.9	-1,430.0	-470.0	1,505.3	0.00	0.00	
6,100.0	15.77	198.20	5,891.1	-1,455.8	-478.5	1,532.4	0.00	0.00	
6,200.0	15.77	198.20	5,987.4	-1,481.6	-487.0	1,559.6	0.00	0.00	
6,300.0	15.77	198.20	6,083.6	-1,507.4	-495.5	1,586.8	0.00	0.00	
6,400.0	15.77	198.20	6,179.8	-1,533.2	-504.0	1,614.0	0.00	0.00	
6,500.0	15.77	198.20	6,276.1	-1,559.1	-512.5	1,641.1	0.00	0.00	
6,551.9	15.77	198.20	6,326.0	-1,572.5	-516.9	1,655.2	0.00	0.00	Ohio Creek
6,600.0	15.77	198.20	6,372.3	-1,584.9	-521.0	1,668.3	0.00	0.00	
6,700.0	15.77	198.20	6,468.5	-1,610.7	-529.5	1,695.5	0.00	0.00	
6,800.0	15.77	198.20	6,564.8	-1,636.5	-537.9	1,722.7	0.00	0.00	
6,900.0	15.77	198.20	6,661.0	-1,662.3	-546.4	1,749.8	0.00	0.00	
7,000.0	15.77	198.20	6,757.2	-1,688.2	-554.9	1,777.0	0.00	0.00	
7,100.0	15.77	198.20	6,853.5	-1,714.0	-563.4	1,804.2	0.00	0.00	
7,200.0	15.77	198.20	6,949.7	-1,739.8	-571.9	1,831.4	0.00	0.00	
7,300.0	15.77	198.20	7,046.0	-1,765.6	-580.4	1,858.5	0.00	0.00	
7,351.0	15.77	198.20	7,095.0	-1,778.8	-584.7	1,872.4	0.00	0.00	Williams Fork
7,400.0	15.77	198.20	7,142.2	-1,791.4	-588.9	1,885.7	0.00	0.00	
7,423.1	15.77	198.20	7,164.5	-1,797.4	-590.8	1,892.0	0.00	0.00	Start 2° Drop
7,500.0	14.23	198.20	7,238.7	-1,816.3	-597.0	1,911.9	2.00	-2.00	
7,600.0	12.23	198.20	7,336.0	-1,838.0	-604.2	1,934.8	2.00	-2.00	
7,700.0	10.23	198.20	7,434.1	-1,856.5	-610.3	1,954.3	2.00	-2.00	
7,800.0	8.23	198.20	7,532.8	-1,871.8	-615.3	1,970.3	2.00	-2.00	
7,900.0	6.23	198.20	7,632.0	-1,883.7	-619.2	1,982.9	2.00	-2.00	
8,000.0	4.23	198.20	7,731.6	-1,892.4	-622.1	1,992.0	2.00	-2.00	
8,100.0	2.23	198.20	7,831.4	-1,897.8	-623.8	1,997.7	2.00	-2.00	
8,200.0	0.23	198.20	7,931.4	-1,899.8	-624.5	1,999.8	2.00	-2.00	
8,211.6	0.00	0.00	7,943.0	-1,899.8	-624.5	1,999.8	2.00	-2.00	EOD @ Inc. = 0° - Top Gas
8,300.0	0.00	0.00	8,031.4	-1,899.8	-624.5	1,999.8	0.00	0.00	
8,400.0	0.00	0.00	8,131.4	-1,899.8	-624.5	1,999.8	0.00	0.00	
8,500.0	0.00	0.00	8,231.4	-1,899.8	-624.5	1,999.8	0.00	0.00	
8,600.0	0.00	0.00	8,331.4	-1,899.8	-624.5	1,999.8	0.00	0.00	
8,700.0	0.00	0.00	8,431.4	-1,899.8	-624.5	1,999.8	0.00	0.00	
8,800.0	0.00	0.00	8,531.4	-1,899.8	-624.5	1,999.8	0.00	0.00	
8,900.0	0.00	0.00	8,631.4	-1,899.8	-624.5	1,999.8	0.00	0.00	
9,000.0	0.00	0.00	8,731.4	-1,899.8	-624.5	1,999.8	0.00	0.00	
9,100.0	0.00	0.00	8,831.4	-1,899.8	-624.5	1,999.8	0.00	0.00	
9,200.0	0.00	0.00	8,931.4	-1,899.8	-624.5	1,999.8	0.00	0.00	
9,300.0	0.00	0.00	9,031.4	-1,899.8	-624.5	1,999.8	0.00	0.00	
9,340.6	0.00	0.00	9,072.0	-1,899.8	-624.5	1,999.8	0.00	0.00	Coal Ridge
9,400.0	0.00	0.00	9,131.4	-1,899.8	-624.5	1,999.8	0.00	0.00	
9,500.0	0.00	0.00	9,231.4	-1,899.8	-624.5	1,999.8	0.00	0.00	
9,600.0	0.00	0.00	9,331.4	-1,899.8	-624.5	1,999.8	0.00	0.00	



# Cathedral Energy Services

## Planning Report

<b>Database:</b>	USA EDM 5000 Multi Users DB	<b>Local Co-ordinate Reference:</b>	Well MCU 21-5B (M16W Pad)
<b>Company:</b>	EnCana Oil & Gas (USA) Inc	<b>TVD Reference:</b>	KB=22' @ 7903.0ft (Patterson 308)
<b>Project:</b>	Mamm Creek	<b>MD Reference:</b>	KB=22' @ 7903.0ft (Patterson 308)
<b>Site:</b>	M16W Pad (SWSW S16-T7S-R93W)	<b>North Reference:</b>	True
<b>Well:</b>	MCU 21-5B (M16W Pad)	<b>Survey Calculation Method:</b>	Minimum Curvature
<b>Wellbore:</b>	DD		
<b>Design:</b>	Plan #1		

Planned Survey									
Measured Depth (ft)	Inclination (°)	Azimuth (°)	Vertical Depth (ft)	+N/-S (ft)	+E/-W (ft)	Vertical Section (ft)	Dogleg Rate (°/100ft)	Build Rate (°/100ft)	Comments / Formations
9,700.0	0.00	0.00	9,431.4	-1,899.8	-624.5	1,999.8	0.00	0.00	
9,800.0	0.00	0.00	9,531.4	-1,899.8	-624.5	1,999.8	0.00	0.00	
9,900.0	0.00	0.00	9,631.4	-1,899.8	-624.5	1,999.8	0.00	0.00	
10,000.0	0.00	0.00	9,731.4	-1,899.8	-624.5	1,999.8	0.00	0.00	
10,100.0	0.00	0.00	9,831.4	-1,899.8	-624.5	1,999.8	0.00	0.00	
10,136.6	0.00	0.00	9,868.0	-1,899.8	-624.5	1,999.8	0.00	0.00	Rollins
10,200.0	0.00	0.00	9,931.4	-1,899.8	-624.5	1,999.8	0.00	0.00	
10,300.0	0.00	0.00	10,031.4	-1,899.8	-624.5	1,999.8	0.00	0.00	
10,400.0	0.00	0.00	10,131.4	-1,899.8	-624.5	1,999.8	0.00	0.00	
10,500.0	0.00	0.00	10,231.4	-1,899.8	-624.5	1,999.8	0.00	0.00	
10,574.6	0.00	0.00	10,306.0	-1,899.8	-624.5	1,999.8	0.00	0.00	Cozzette
10,600.0	0.00	0.00	10,331.4	-1,899.8	-624.5	1,999.8	0.00	0.00	
10,700.0	0.00	0.00	10,431.4	-1,899.8	-624.5	1,999.8	0.00	0.00	
10,791.6	0.00	0.00	10,523.0	-1,899.8	-624.5	1,999.8	0.00	0.00	Corcoran
10,800.0	0.00	0.00	10,531.4	-1,899.8	-624.5	1,999.8	0.00	0.00	
10,900.0	0.00	0.00	10,631.4	-1,899.8	-624.5	1,999.8	0.00	0.00	
11,000.0	0.00	0.00	10,731.4	-1,899.8	-624.5	1,999.8	0.00	0.00	
11,100.0	0.00	0.00	10,831.4	-1,899.8	-624.5	1,999.8	0.00	0.00	
11,191.6	0.00	0.00	10,923.0	-1,899.8	-624.5	1,999.8	0.00	0.00	TD @ 11,191.6' MD
11,200.0	0.00	0.00	10,931.4	-1,899.8	-624.5	1,999.8	0.00	0.00	
11,291.6	0.00	0.00	11,023.0	-1,899.8	-624.5	1,999.8	0.00	0.00	Permit TD @ 11,291.6' MD

Targets									
Target Name	Dip Angle (°)	Dip Dir. (°)	TVD (ft)	+N/-S (ft)	+E/-W (ft)	Northing (ft)	Easting (ft)	Latitude	Longitude
- hit/miss target									
- Shape									
MCU 21-5B TGT	0.00	0.00	7,943.0	-1,899.8	-624.5	1,591,328.90	2,354,569.83	39.434666	-107.785400
- plan hits target center									
- Point									
MCU 21-5B BHL (1343'	0.00	0.00	10,923.0	-1,899.8	-624.5	1,591,328.90	2,354,569.83	39.434666	-107.785400
- plan hits target center									
- Circle (radius 25.0)									

Casing Points				
Measured Depth (ft)	Vertical Depth (ft)	Name	Casing Diameter (in)	Hole Diameter (in)
1,225.4	1,200.0	Surface Casing		



# Cathedral Energy Services

## Planning Report

<b>Database:</b>	USA EDM 5000 Multi Users DB	<b>Local Co-ordinate Reference:</b>	Well MCU 21-5B (M16W Pad)
<b>Company:</b>	EnCana Oil & Gas (USA) Inc	<b>TVD Reference:</b>	KB=22' @ 7903.0ft (Patterson 308)
<b>Project:</b>	Mamm Creek	<b>MD Reference:</b>	KB=22' @ 7903.0ft (Patterson 308)
<b>Site:</b>	M16W Pad (SWSW S16-T7S-R93W)	<b>North Reference:</b>	True
<b>Well:</b>	MCU 21-5B (M16W Pad)	<b>Survey Calculation Method:</b>	Minimum Curvature
<b>Wellbore:</b>	DD		
<b>Design:</b>	Plan #1		

Formations						
Measured Depth (ft)	Vertical Depth (ft)	Name	Lithology	Dip (°)	Dip Direction (°)	
6,551.9	6,326.0	Ohio Creek				
7,351.0	7,095.0	Williams Fork				
8,211.6	7,943.0	Top Gas				
9,340.6	9,072.0	Coal Ridge				
10,136.6	9,868.0	Rollins				
10,574.6	10,306.0	Cozzette				
10,791.6	10,523.0	Corcoran				

Plan Annotations				
Measured Depth (ft)	Vertical Depth (ft)	Local Coordinates		Comment
		+N/-S (ft)	+E/-W (ft)	
200.0	200.0	0.0	0.0	KOP @ 200'
725.6	719.0	-68.3	-22.4	EOB @ Inc. = 15.77°
7,423.1	7,164.5	-1,797.4	-590.8	Start 2° Drop
8,211.6	7,943.0	-1,899.8	-624.5	EOD @ Inc. = 0°
11,191.6	10,923.0	-1,899.8	-624.5	TD @ 11,191.6' MD
11,291.6	11,023.0	-1,899.8	-624.5	Permit TD @ 11,291.6' MD