

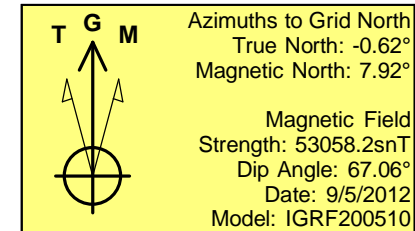
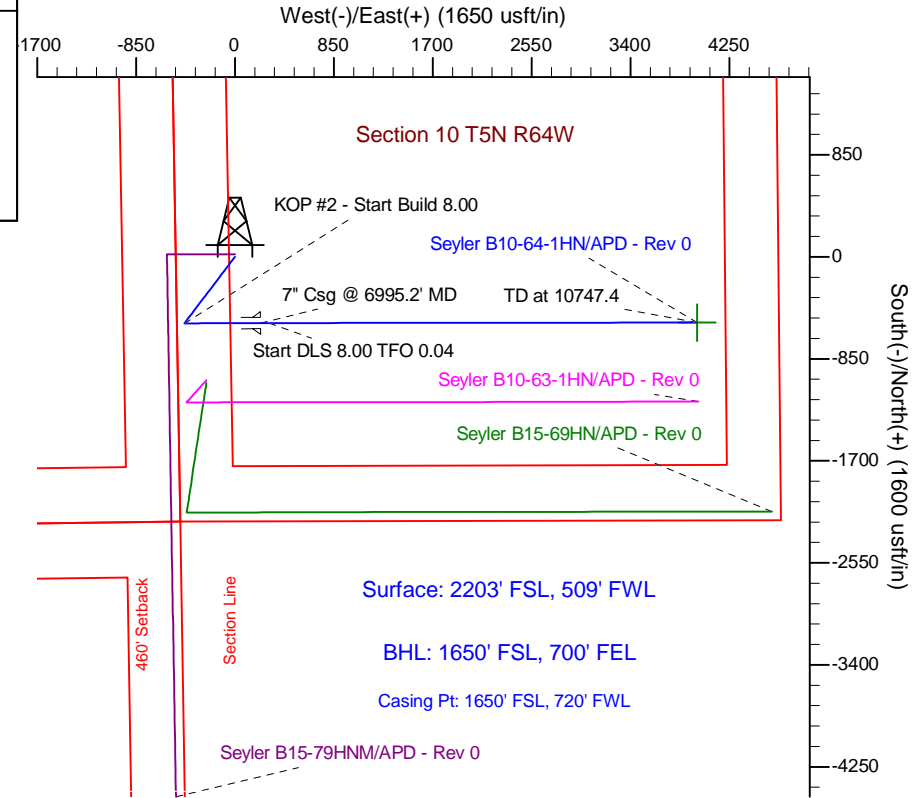
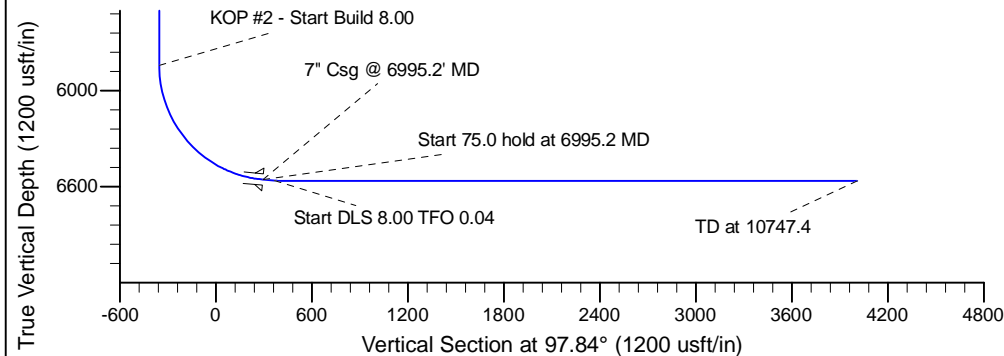
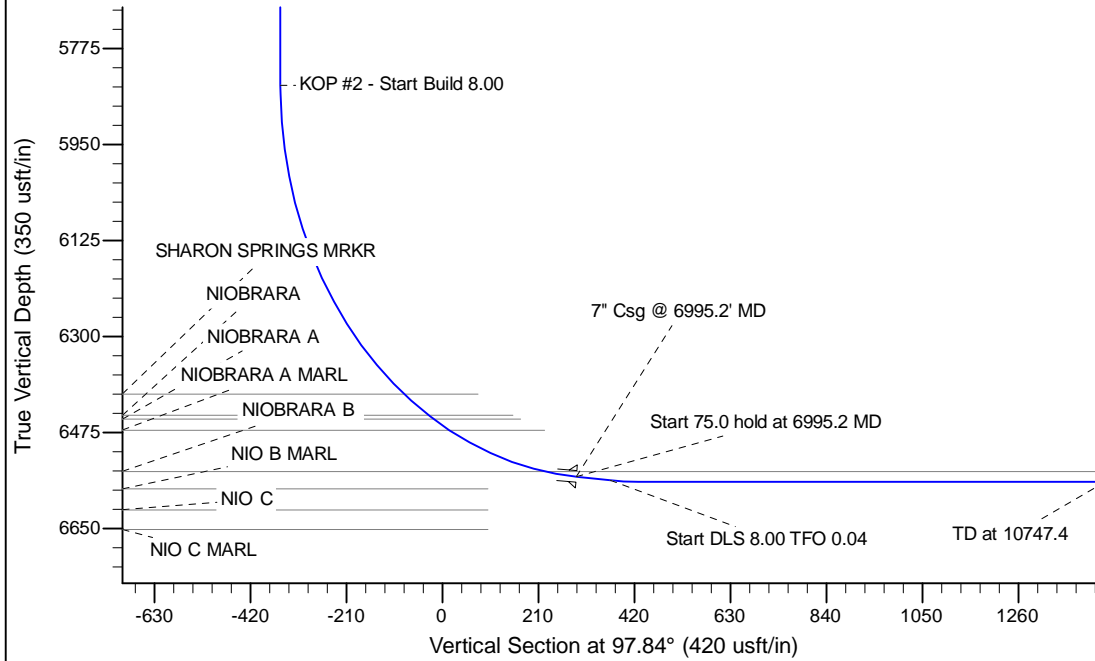
Project: Wattenberg Field
Site: B (Sec.10-T05N-R64W) Weld County, CO
Well: Seyler B10-64-1HN
Wellbore: Original Drilling
Design: APD - Rev 0

Northern Region Drilling

Geodetic System: US State Plane 1983
Datum: North American Datum 1983
Ellipsoid: GRS 1980
Zone: Colorado Northern Zone
System Datum: Mean Sea Level

SECTION DETAILS

Sec	MD	Inc	Azi	TVD	+N/-S	+E/-W	Dleg	TFace	VSec	Target
1	0.0	0.00	0.00	0.0	0.0	0.0	0.00	0.00	0.0	
2	1200.0	0.00	0.00	1200.0	0.0	0.0	0.00	0.00	0.0	
3	1840.2	16.01	218.13	1831.9	-69.9	-54.9	2.50	218.13	-44.8	
4	3745.2	16.01	218.13	3663.1	-483.1	-379.1	0.00	0.00	-309.7	
5	4385.4	0.00	0.00	4295.0	-553.0	-434.0	2.50	180.00	-354.5	
6	5932.7	0.00	0.00	5842.3	-553.0	-434.0	0.00	0.00	-354.5	
7	6995.2	85.00	89.92	6555.7	-552.1	219.8	8.00	89.92	293.1	
8	7070.2	85.00	89.92	6562.3	-552.0	294.5	0.00	0.00	367.1	
9	7132.7	90.00	89.92	6565.0	-551.9	356.9	8.00	0.04	428.9	
10	10747.4	90.00	89.92	6565.0	-547.1	3971.6	0.00	0.00	4009.1	Seyler B10-64-1HN BHL 1650'FSL, 700'FEL



WELL DETAILS: Seyler B10-64-1HN			
Ground Level:	4597.0	Latitude	40.412620
Northing	1394593.35	Easting	3266254.08
		Longitude	-104.543810
Plan: APD - Rev 0 (Seyler B10-64-1HN/Original Drilling)			
Created By:	Carrie Willers	Date:	11:03, September 14 2012
Checked:		Date:	
Reviewed:		Date:	
Approved:		Date:	