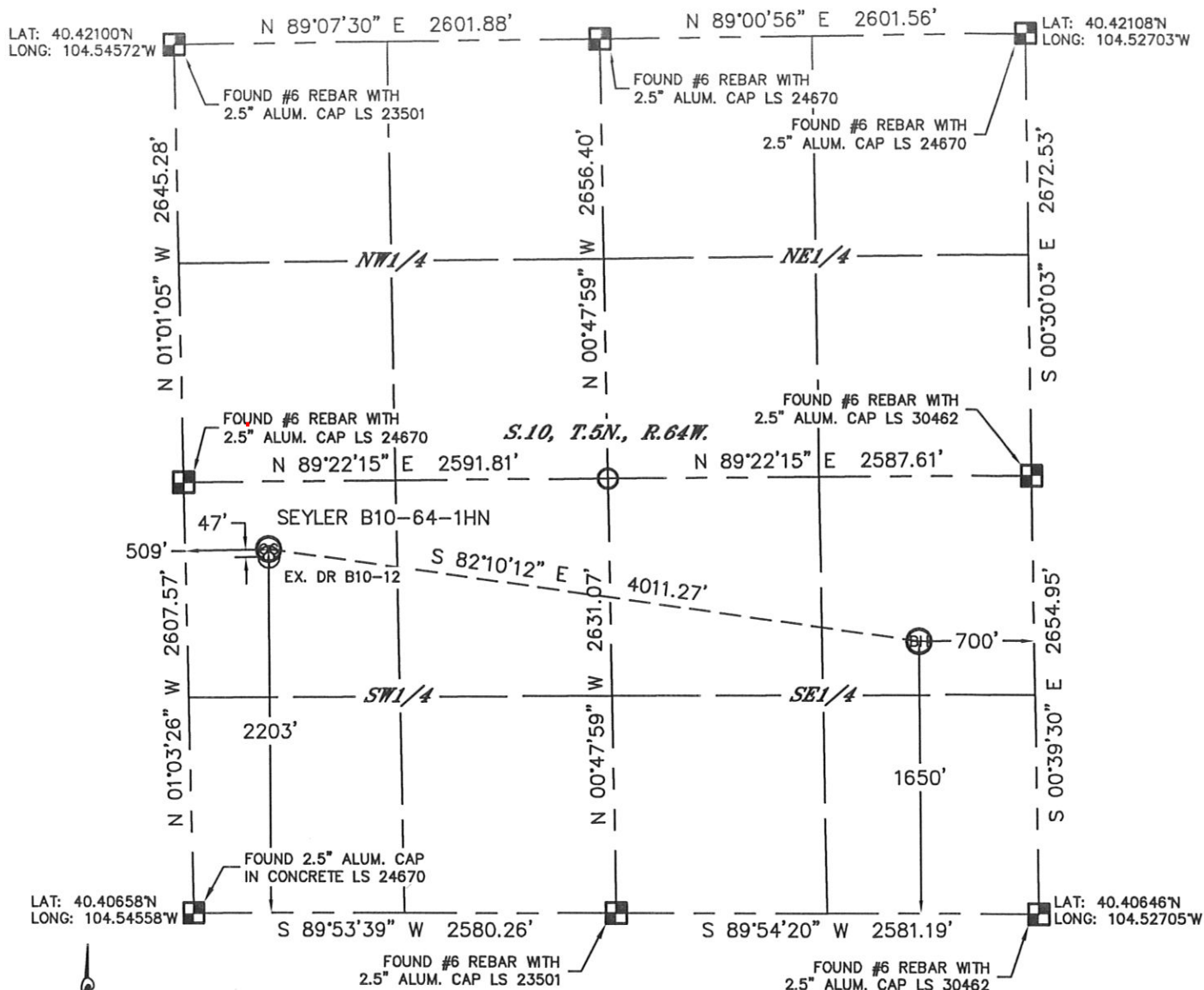


WELL LOCATION CERTIFICATE

THIS MAP DOES NOT REPRESENT A BOUNDARY SURVEY

SECTION: 10
TOWNSHIP: 5N
RANGE: 64W

In accordance with a request from Jacob Rice with Noble Energy Inc.

Lat40°, Inc. has determined the surface location of the SEYLER B10-64-1HN to be 2203' from the SOUTH line and 509' from the WEST line and the bottom hole to be 1650' from the SOUTH line and 700' from the EAST line as measured at right angles from the section lines of Section 10, Township 5 North, Range 64 West of the Sixth Principal Meridian, County of Weld, State of Colorado.

I hereby state that this Well Location Certificate was prepared by me, or under my direct supervision, that the fieldwork was completed on 4/11/2012, for and on behalf of Noble Energy Inc. That this is not a Land Survey Plat or an Improvement Survey Plat, and that it is not to be relied upon for establishment of fence, building, or other future improvement lines.



NOTE:

- 1) Bearings shown are Grid Bearings of the Colorado State Plane Coordinate System, North Zone, North American Datum 1983/2007. The lineal dimensions as contained herein are based upon the "U.S. Survey Foot."
- 2) Ground elevations are based on an observed GPS elevation (NAVD 1988 DATUM).
- 3) NEAREST EXISTING WELL: DR B10-12, 47'
- 4) IMPROVEMENTS: See LOCATION DRAWING for all visible improvements within 400' of disturbed area.
- 5) SURFACE USE: CROPLAND
- 6) INSTRUMENT OPERATOR: WYATT HALL

NOTE

According to Colorado law, you must commence any legal action based upon any defect in this W.L.C. within three years after you discover such defect. In no event, may any action based upon any defect in this survey be commenced more than ten years after the date of the certificate shown hereon. (13-80-105 C.R.S.)

LEGEND

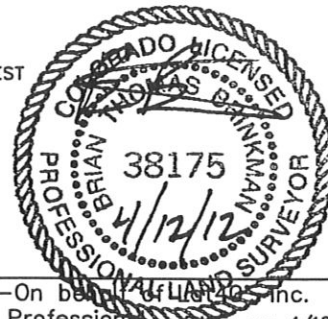
-  = ALIQUOT MONUMENT AS DESCRIBED
 = CALCULATED POSITION

SURFACE LOCATION

LAT: 40.41262°N
 LONG: 104.54381°W
 PDOP: 1.6
 ELEV: 4597'
 1/4, 1/4: NW1/4SW1/4
 NEAREST PROPERTY LINE: 509' WEST

BOTTOM HOLE

LAT: 40.41100°N
 LONG: 104.52957°W

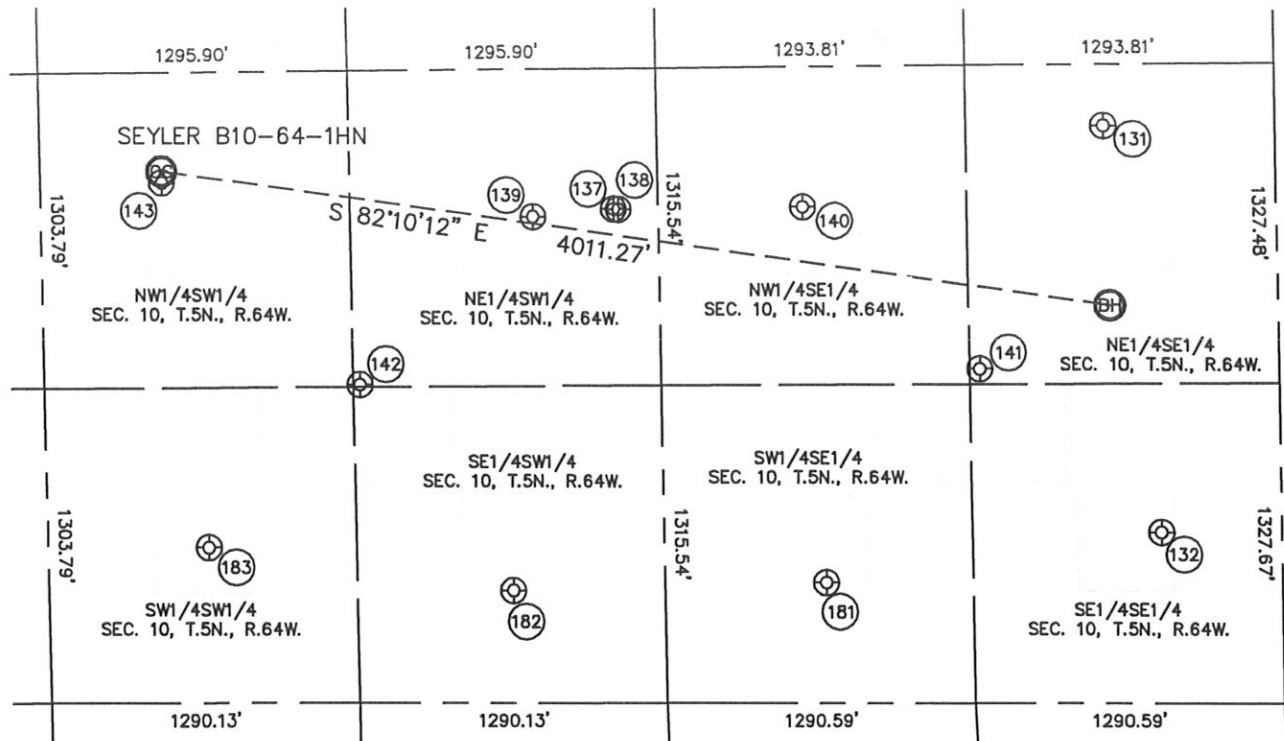


Brian T. Brinkman—On behalf of Lat40°, Inc.
 Colorado Licensed Professional Surveyor No. 38175
 DATE: rev. 4/12/2012
 PROJECT#: 2012029

SITE SKETCH

SEYLER B10-64-1HN

SECTION: 10
TOWNSHIP: 5N
RANGE: 64W



131

SLW B1-10
NE1/4SE1/4
2394' FSL
715' FEL
LAT-40.41304°N
LONG-104.52962°W
PDOP: 1.5
ELEV: 4610'

132

SLW B10-16
SE1/4SE1/4
710' FSL
503' FEL
LAT-40.40842°N
LONG-104.52886°W
PDOP: 1.3
ELEV: 4602'

137

PETERSON B10-24D
NE1/4SW1/4
2047' FSL
2401' FWL
LAT-40.41214°N
LONG-104.53701°W
PDOP: 2.3
ELEV: 4606'

138

WACKER B10-20D
NE1/4SW1/4
2045' FSL
2421' FWL
LAT-40.41214°N
LONG-104.53694°W
PDOP: 1.6
ELEV: 4606'

139

TREBOR B10-11
NE1/4SW1/4
2014' FSL
2061' FWL
LAT-40.41206°N
LONG-104.53823°W
PDOP: 2.6
ELEV: 4601'

140

TREBOR B10-10
NW1/4SE1/4
2056' FSL
1981' FEL
LAT-40.41215°N
LONG-104.53417°W
PDOP: 2.3
ELEV: 4606'

141

PECOCK B10-23
NE1/4SE1/4
1386' FSL
1249' FEL
LAT-40.41029°N
LONG-104.53154°W
PDOP: 1.6
ELEV: 4602'

142

PETERSON B10-25
NE1/4SW1/4
1319' FSL
1320' FWL
LAT-40.41017°N
LONG-104.54087°W
PDOP: 1.9
ELEV: 4590'

143

DR B10-12
NW1/4SW1/4
2156' FSL
509' FWL
LAT-40.41249°N
LONG-104.54381°W
PDOP: 1.4
ELEV: 4596'

181

TREBOR B10-15
SW1/4SE1/4
500' FSL
1906' FEL
LAT-40.40788°N
LONG-104.53389°W
PDOP: 1.3
ELEV: 4596'

182

TREBOR B10-14
SE1/4SW1/4
466' FSL
1943' FWL
LAT-40.40782°N
LONG-104.53861°W
PDOP: 1.7
ELEV: 4584'

183

DR 2-10
SW1/4SW1/4
645' FSL
674' FWL
LAT-40.40834°N
LONG-104.54318°W
PDOP: 1.5
ELEV: 4581'

