



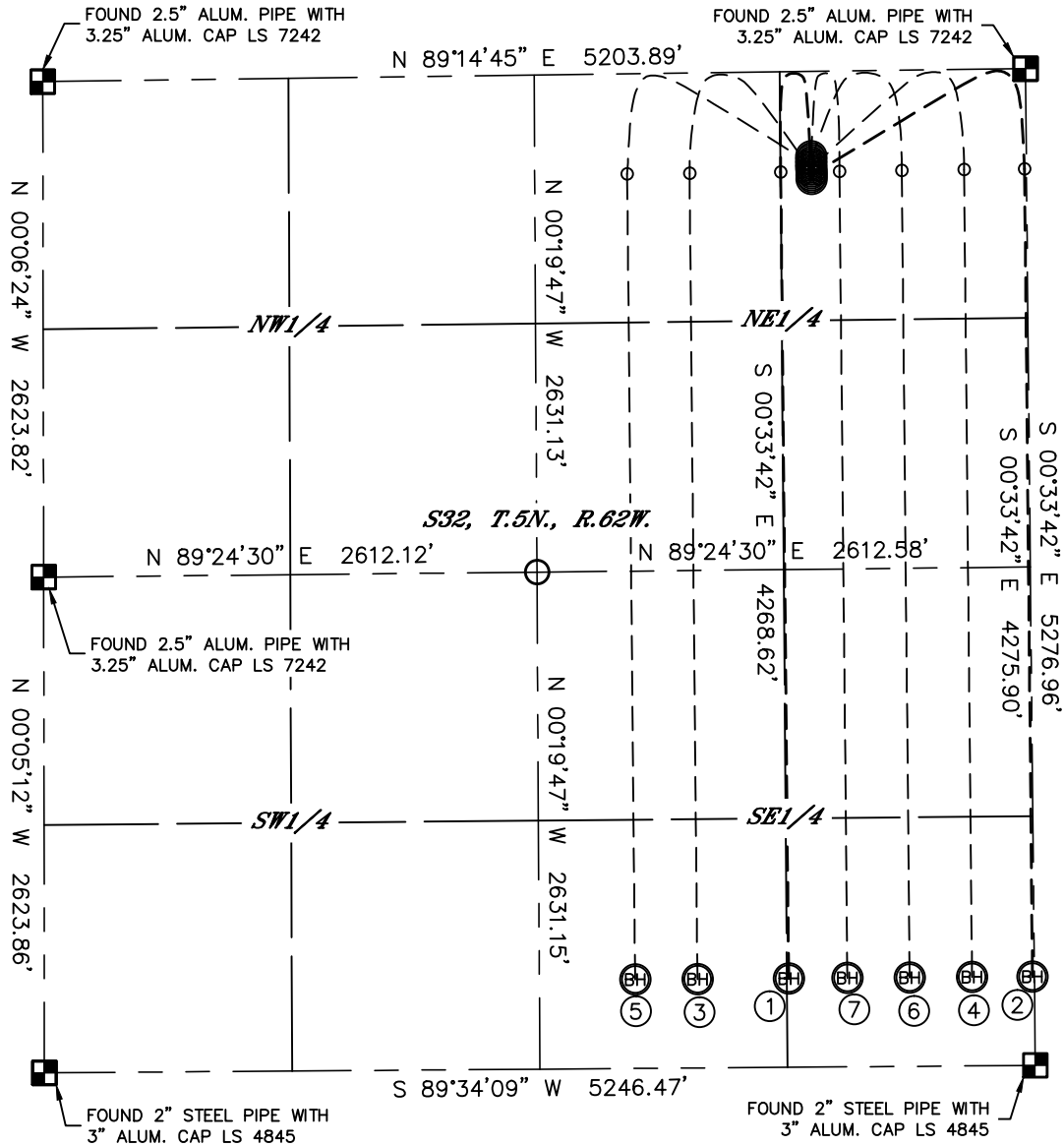
Lat40°, Inc. 1635 Foxtrail Drive, Suite 325 Loveland, CO 970-776-3321

MULTI-WELL PLAN

STATE ANTELOPE P-32 PAD

THIS MAP DOES NOT REPRESENT A BOUNDARY SURVEY

SECTION: 32
TOWNSHIP: 5N
RANGE: 62W



①

—SURFACE LOCATION—
STATE ANTELOPE
P-T-32HNB
570' FNL
1139' FEL
LAT: 40.36186°N
LONG: 104.34234°W

②

—SURFACE LOCATION—
STATE ANTELOPE
U-Y-32HNB
550' FNL
1139' FEL
LAT: 40.36192°N
LONG: 104.34234°W

③

—SURFACE LOCATION—
STATE ANTELOPE A3-32
530' FNL
1139' FEL
LAT-40.36197°N
LONG-104.34234°W

④

—SURFACE LOCATION—
STATE ANTELOPE A4-32
510' FNL
1139' FEL
LAT-40.36203°N
LONG-104.34234°W

⑤

—SURFACE LOCATION—
STATE ANTELOPE A5-32
490' FNL
1139' FEL
LAT: 40.36208°N
LONG: 104.34234°W

⑥

—SURFACE LOCATION—
STATE ANTELOPE A6-32
470' FNL
1139' FEL
LAT-40.36214°N
LONG-104.34234°W

⑦

—SURFACE LOCATION—
STATE ANTELOPE A7-32
450' FNL
1139' FEL
LAT-40.36219°N
LONG-104.34234°W

LEGEND



= ALIQUOT MONUMENT AS DESCRIBED



= CALCULATED POSITION



0 1000

1"=1000'

DATE: 2/7/2013
PROJECT#: 2011349



Lat40°, Inc. 1635 Foxtrail Drive, Suite 325 Loveland, CO 970-776-3321

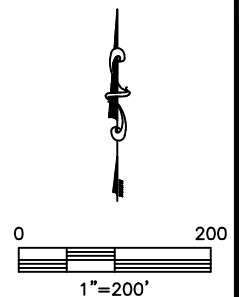
MULTI-WELL PLAN

STATE ANTELOPE P-32 PAD

SECTION: 32
TOWNSHIP: 5N
RANGE: 62W

STATE ANTELOPE A7-32
STATE ANTELOPE A6-32
STATE ANTELOPE A5-32
STATE ANTELOPE A4-32
STATE ANTELOPE A3-32
STATE ANTELOPE U-Y-32HNB
STATE ANTELOPE P-T-32HNB

20' (TYP.)



DATE: 2/7/2013
PROJECT#: 2011349