

NOBLE ENERGY, INC.
TIMBRO FEDERAL LC24-72HN
LOCATED IN WELD COUNTY, COLORADO
SECTION 24, T9N, R59W, 6th P.M.



PHOTO: VIEW OF LOCATION STAKE

CAMERA ANGLE: NORTHERLY



PHOTO: VIEW OF LOCATION STAKE

CAMERA ANGLE: EASTERLY



- Since 1964 -



Uintah Engineering & Land Surveying

85 South 200 East Vernal, Utah 84078
(435) 789-1017 * FAX (435) 789-1813

LOCATION PHOTOS

10 16 12
MONTH DAY YEAR

TAKEN BY: Z.B. | DRAWN BY: J.L.H. | REVISED: 00-00-00

PHOTO
P1

NOBLE ENERGY, INC.
TIMBRO FEDERAL LC24-72HN
LOCATED IN WELD COUNTY, COLORADO
SECTION 24, T9N, R59W, 6th P.M.

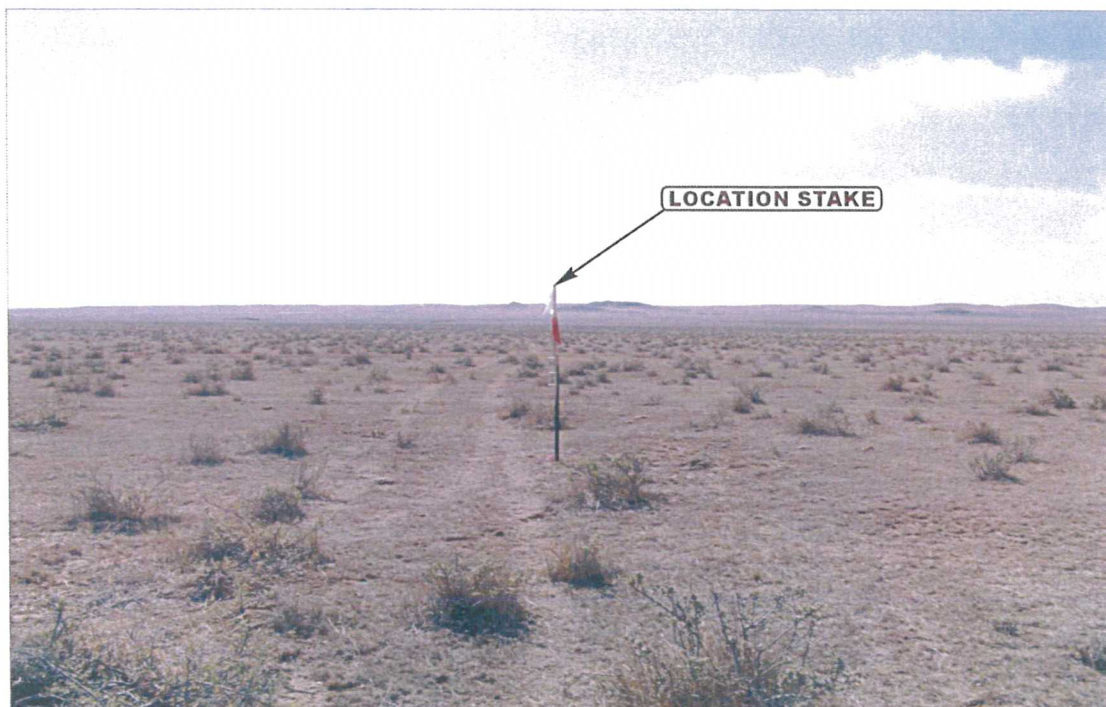


PHOTO: VIEW OF LOCATION STAKE

CAMERA ANGLE: SOUTHERLY



PHOTO: VIEW OF LOCATION STAKE

CAMERA ANGLE: WESTERLY



**U
E
L
S** Uintah Engineering & Land Surveying
85 South 200 East Vernal, Utah 84078
(435) 789-1017 * FAX (435) 789-1813

LOCATION PHOTOS

10 16 12
MONTH DAY YEAR

TAKEN BY: Z.B. DRAWN BY: J.L.H. REVISED: 00-00-00

PHOTO
P2