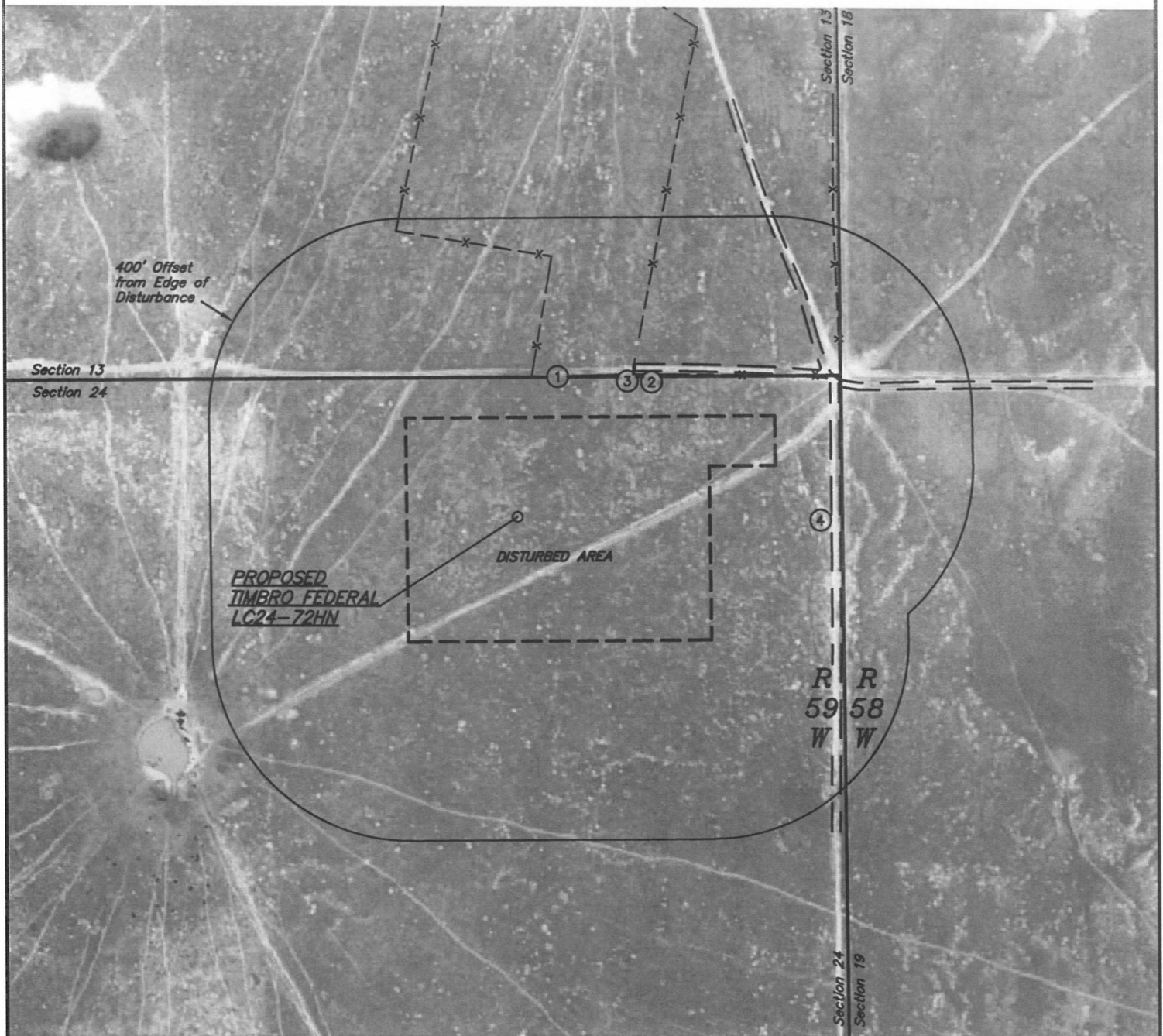


NOBLE ENERGY, INC.

LOCATION DRAWING

TIMBRO FEDERAL LC24-72HN
SECTION 24, T9N, R59W, 6th P.M.

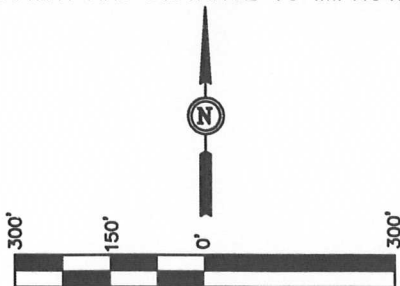
DATE: 10-15-12
DRAWN BY: J.M.H.



NOTE:
DIRECTION AND DISTANCE TO IMPROVEMENTS AND NEAREST FEATURES ARE FROM PROPOSED TIMBRO FEDERAL LC24-72HN.

IMPROVEMENTS:

- ① FENCE 283' N, 717' NE
- ② ROAD 383' NE, 693' NE
- ③ CATTLE GUARD 383' NE
- ④ 2-TRACK 360' E



NEAREST FEATURE: BUILDING 5280' +, PUBLIC ROAD 4700' NW
(WCR 104 & WCR 119), ABOVE GROUND UTILITY 4600' NW,
RAILROAD 5280' +, PROPERTY LINE 280' N

UINTAH ENGINEERING & LAND SURVEYING
85 So. 200 East * Vernal, Utah 84078 * (435) 789-1017