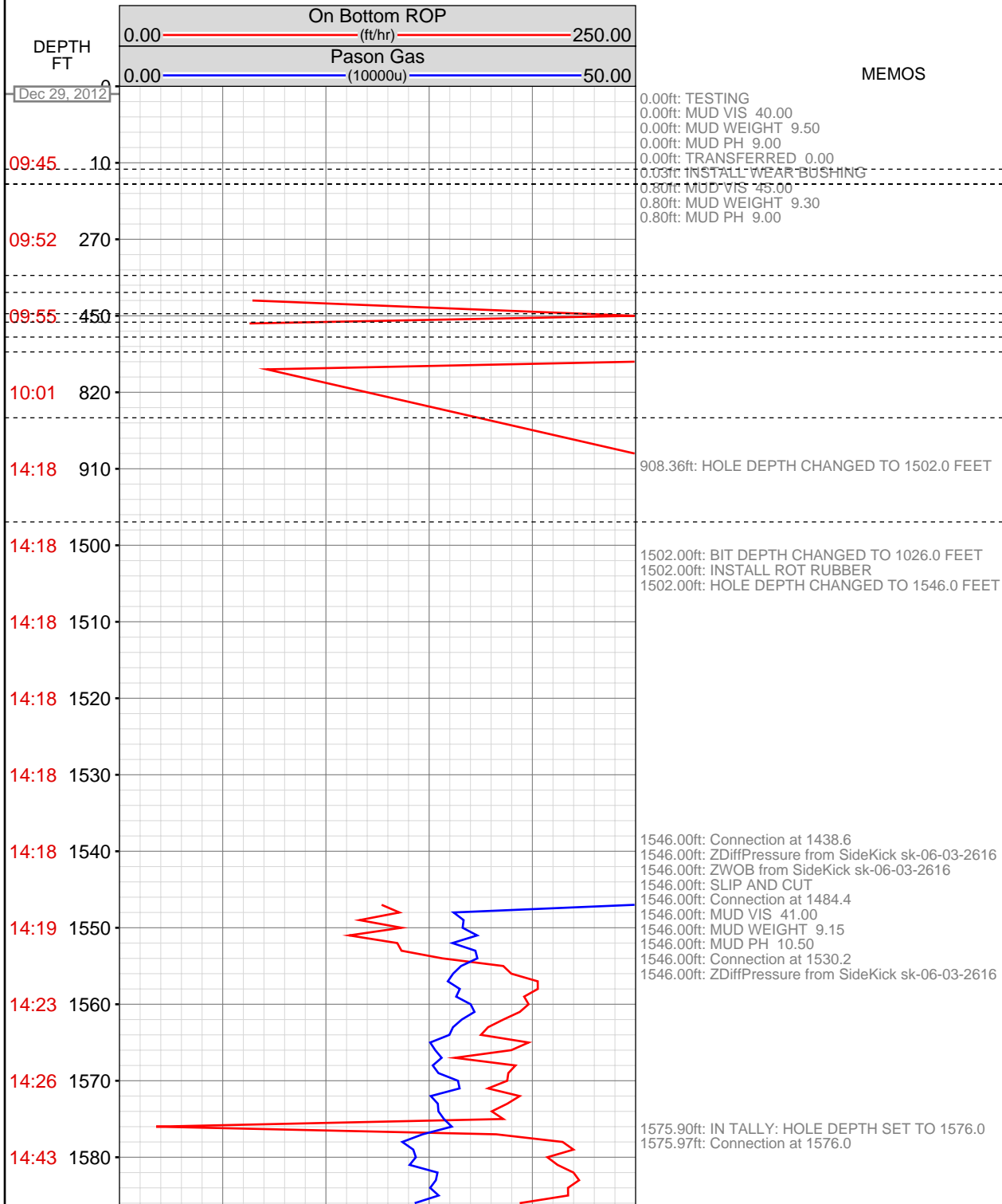


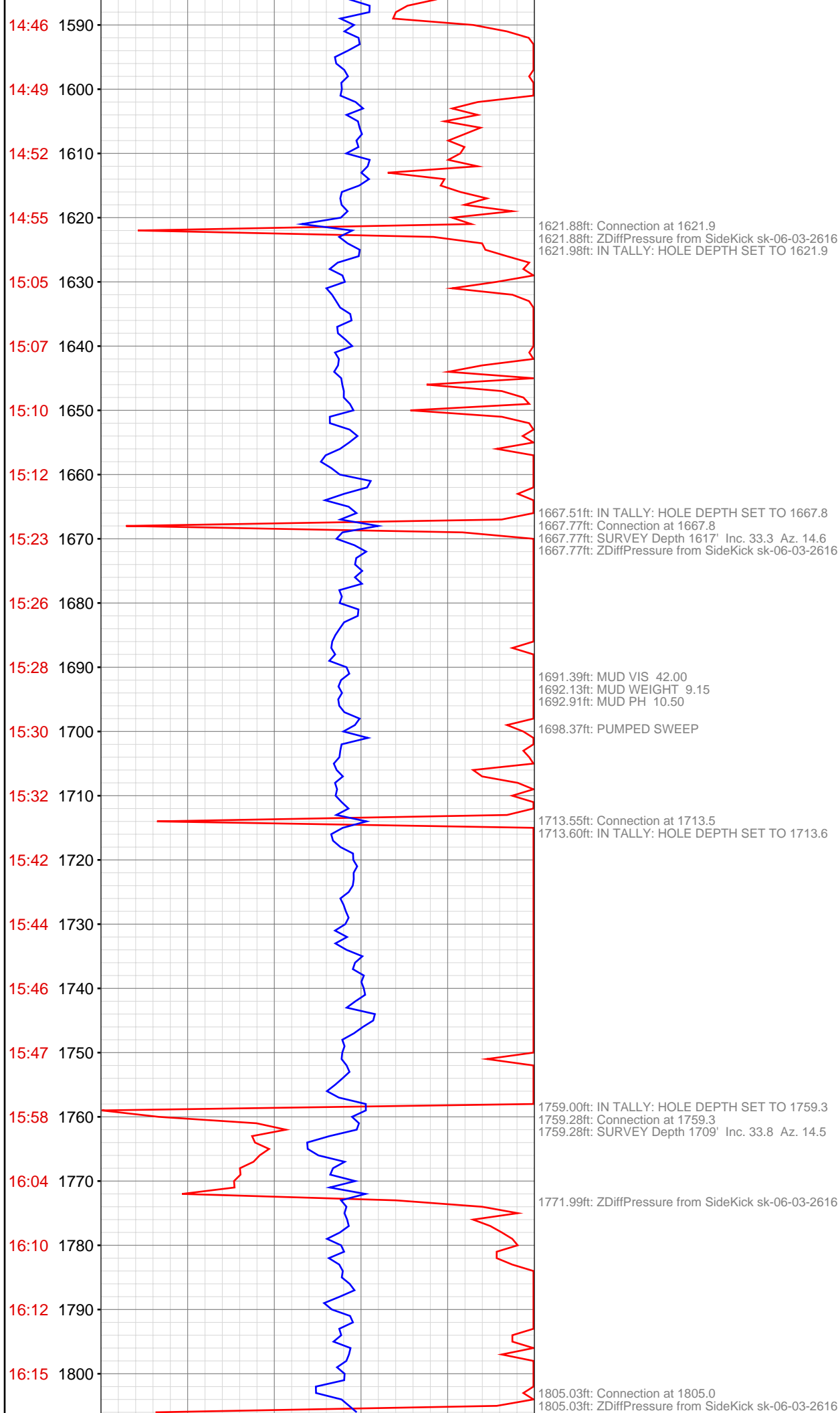
DataHub EDR Log

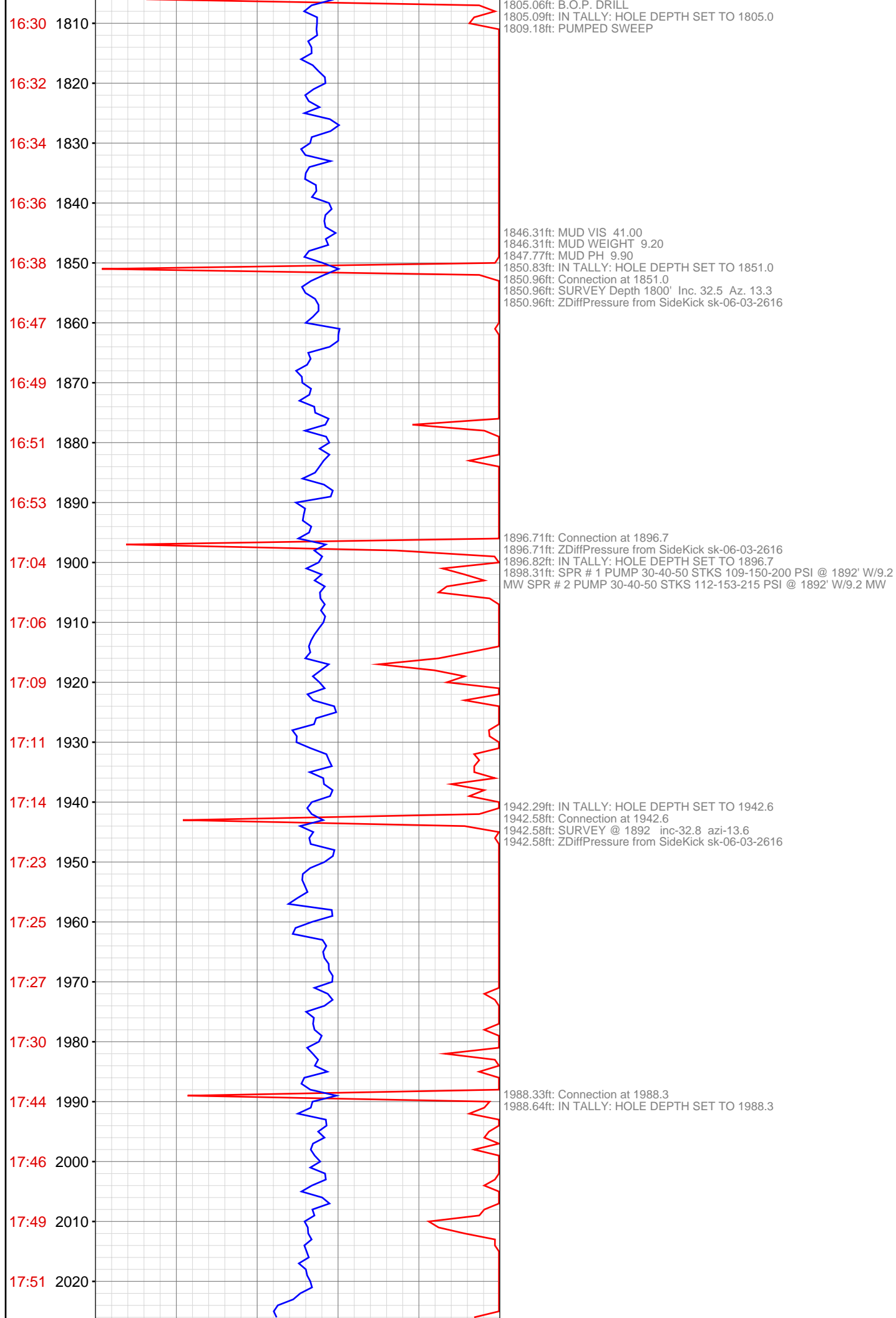
Mon Jan 07, 2013 11:01:15
Well Dossier 1356738361
Greg Veregin

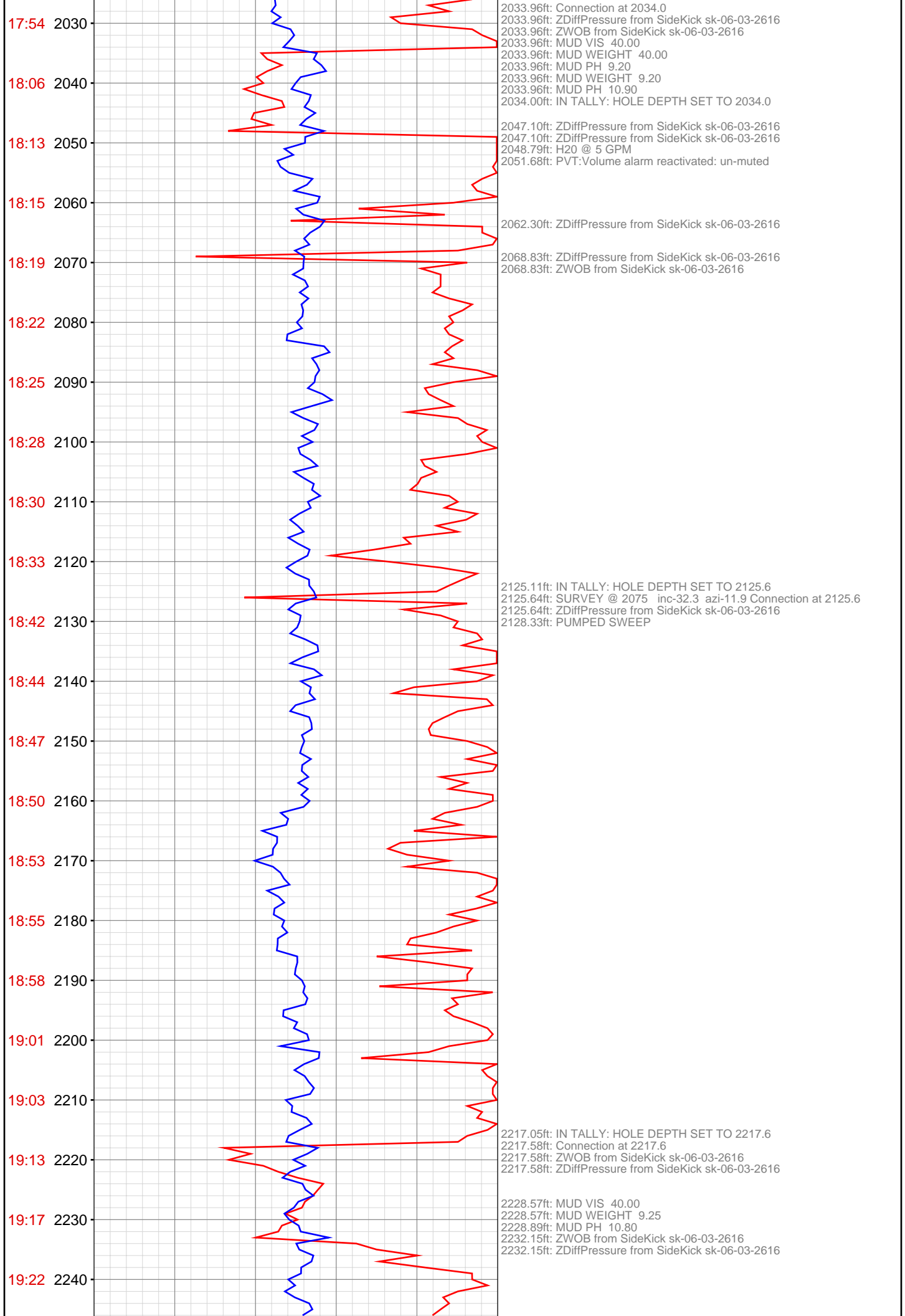
OPERATOR: EnCana Oil & Gas (USA), Inc.
WELL: BENZEL FEDERAL 24-10 E
FIELD:
LOCATION: SEC 24 TWP 6S RNG 93W
COUNTRY: USA
RIG: Pat-UTI 308

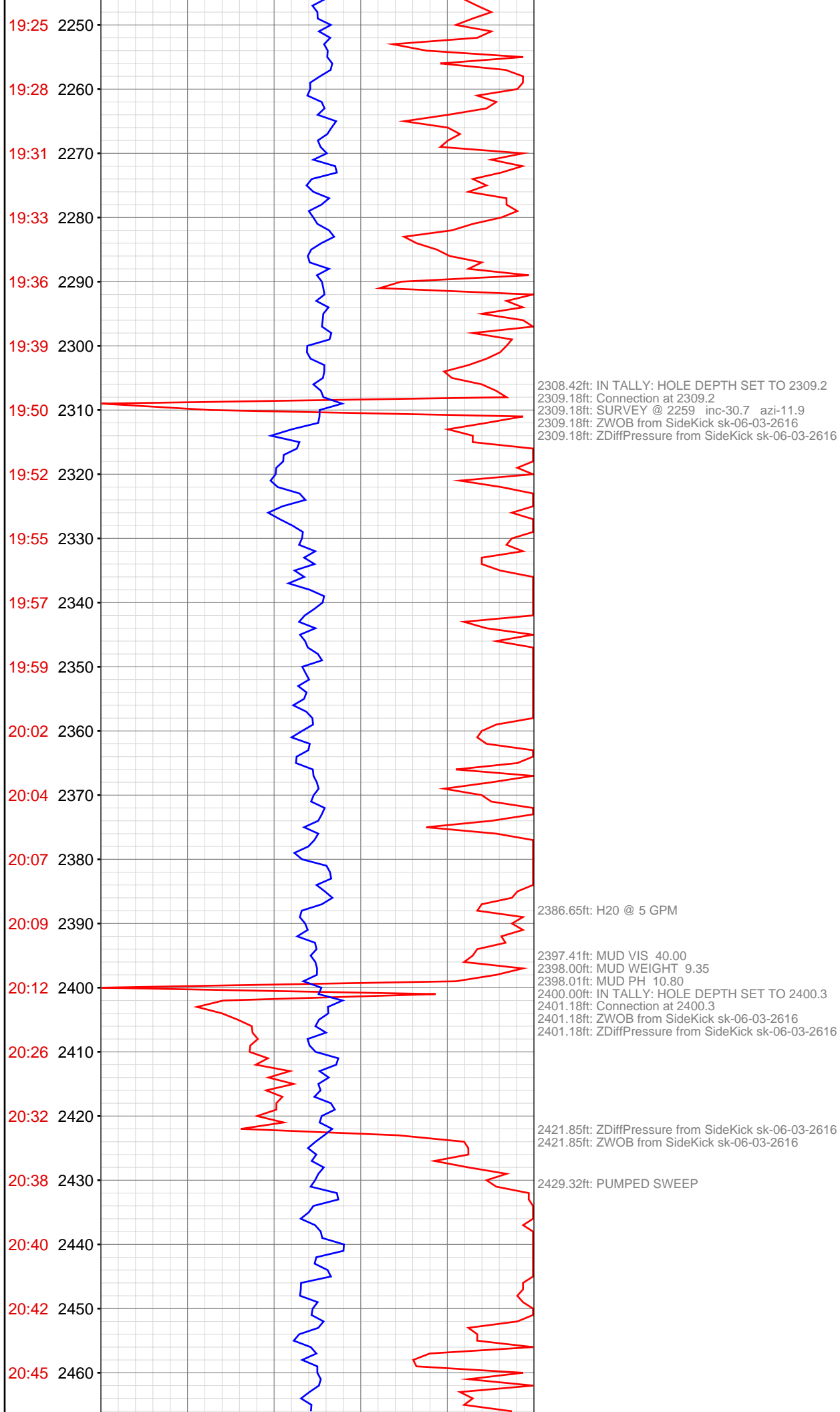
CONTRACTOR: Patterson-UTI Drilling Company
UNIQUE WELL ID: 0504520876
SPUD DATE: Dec 29, 2012 09:00
RELEASE DATE: Jan 06, 2013 21:00

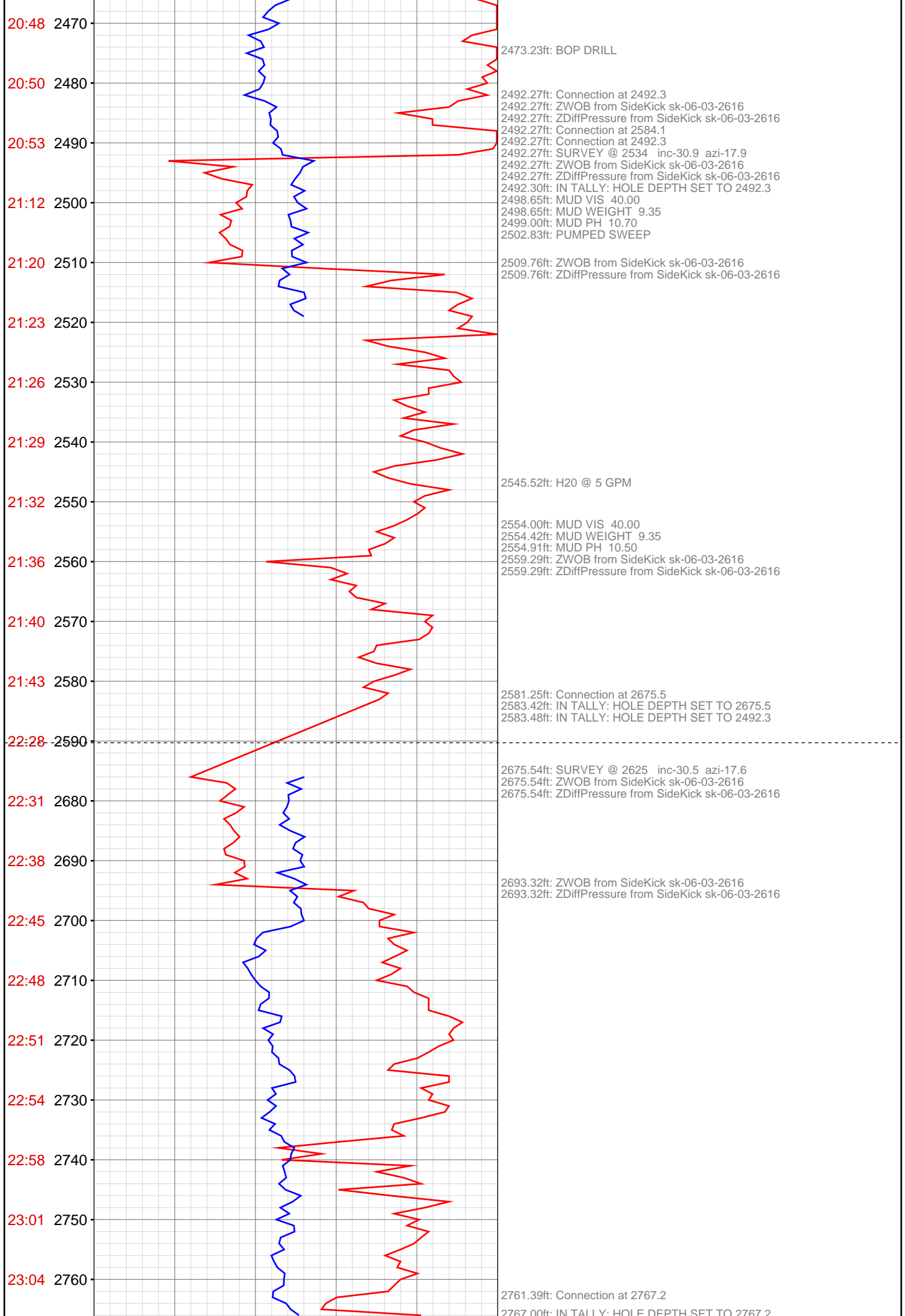


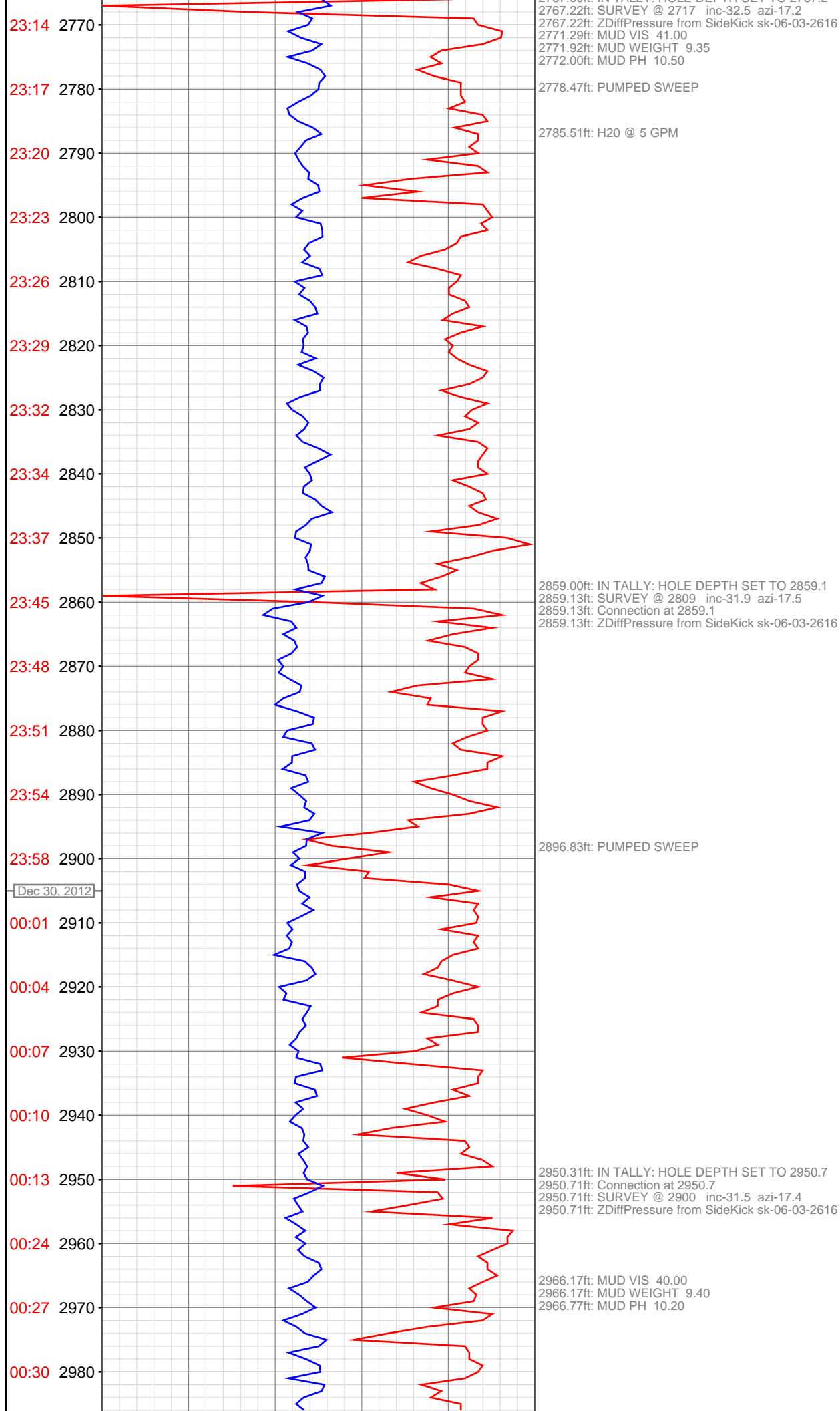


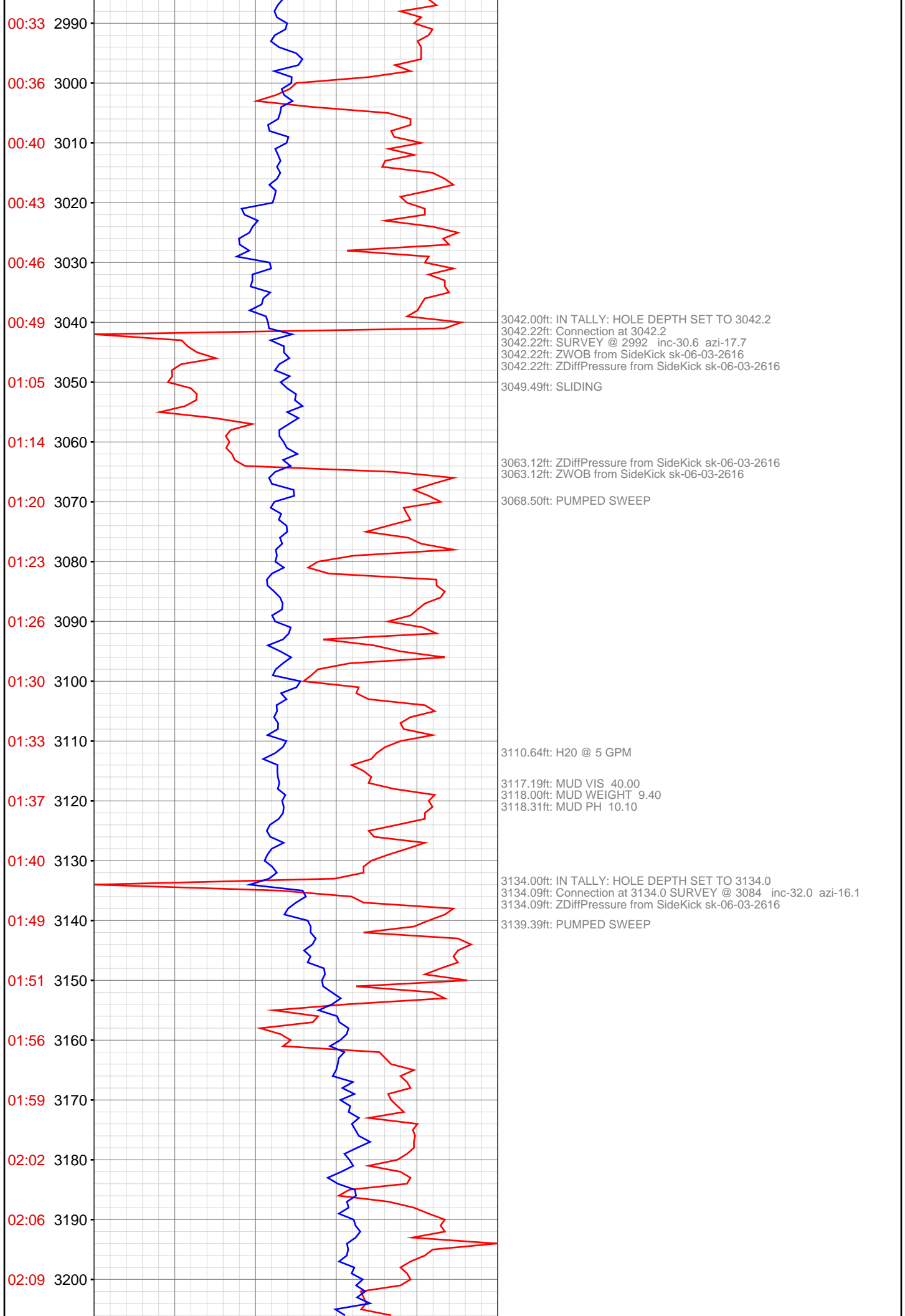


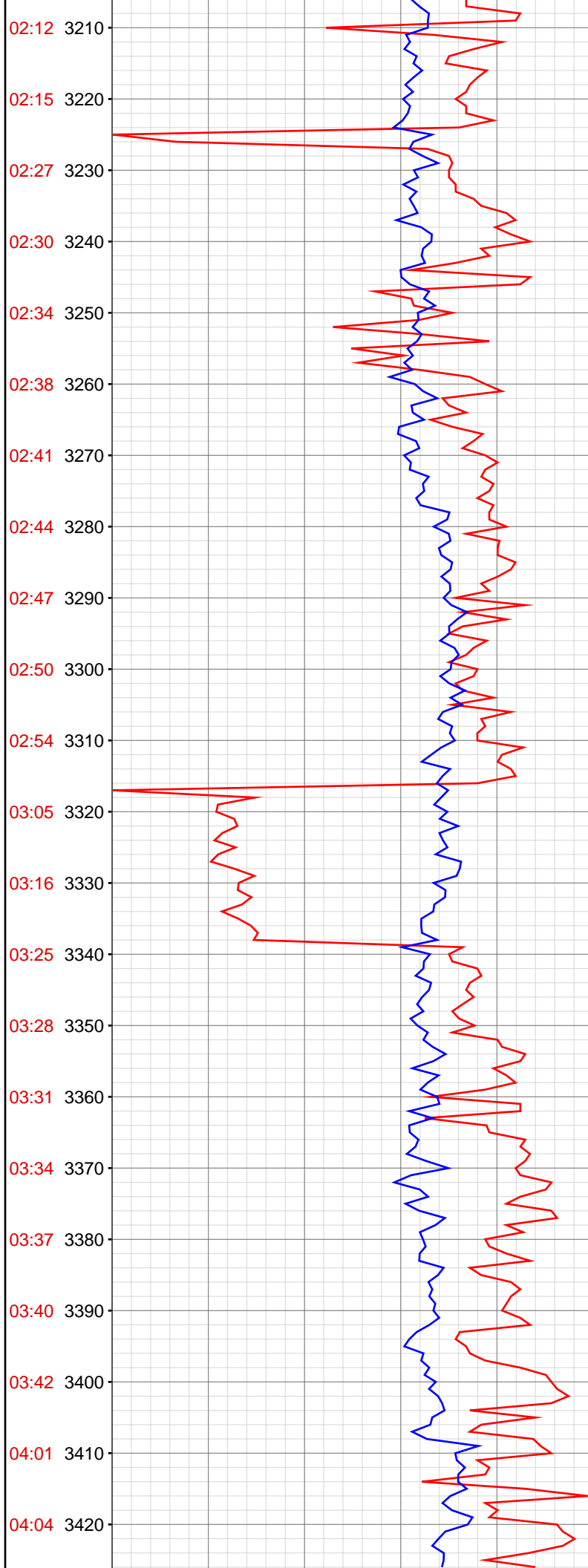












3225.00ft: IN TALLY: HOLE DEPTH SET TO 3225.7
3225.69ft: SURVEY @ 3175 inc-32.1 azi-16.0
3225.69ft: Connection at 3225.7
3225.69ft: ZWOB from SideKick sk-06-03-2616
3225.69ft: ZDiffPressure from SideKick sk-06-03-2616
3230.64ft: PUMPED SWEEP

3257.27ft: MUD VIS 41.00
3257.67ft: MUD WEIGHT 9.40
3257.67ft: MUD PH 9.90

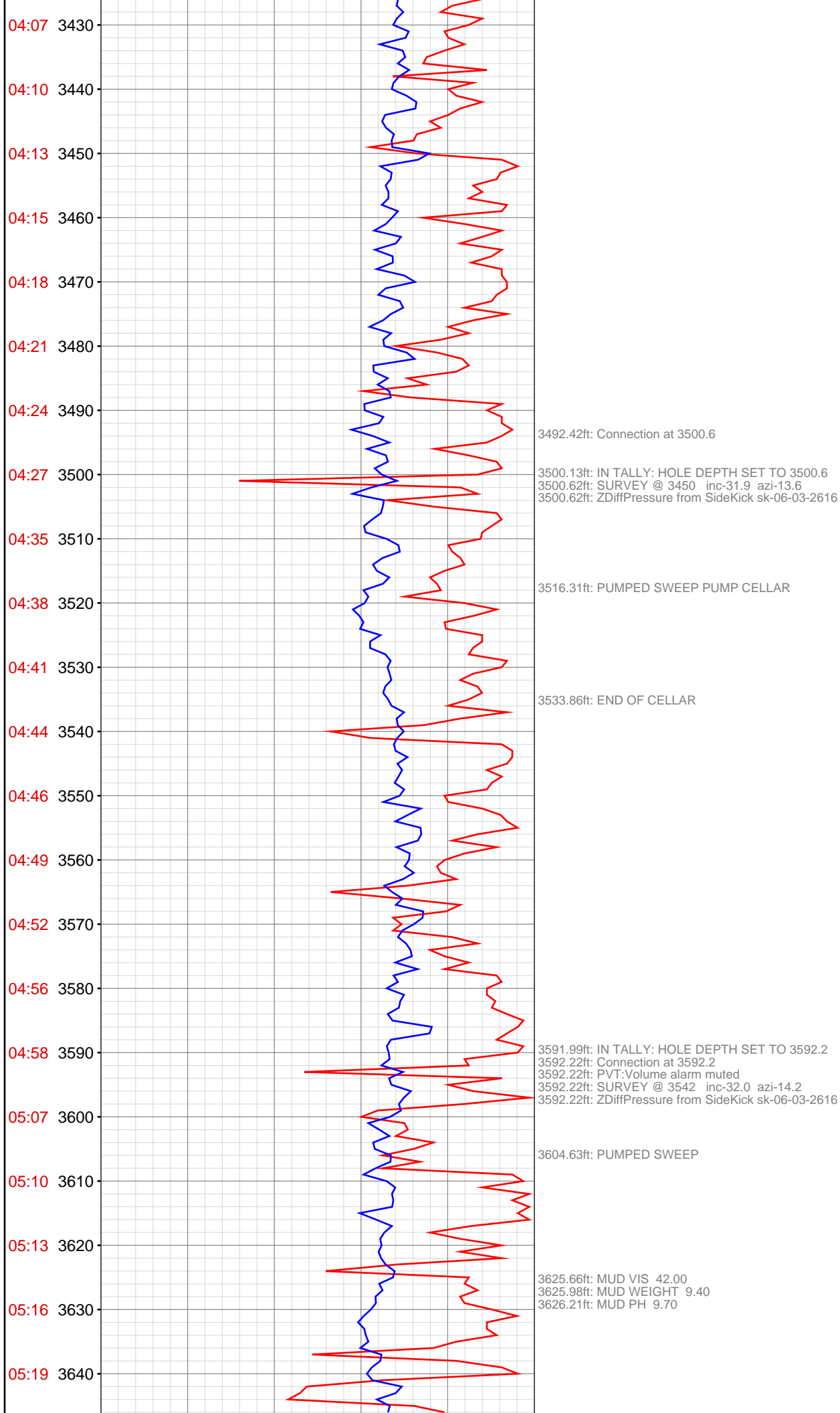
3265.20ft: H2O @ 5 GPM

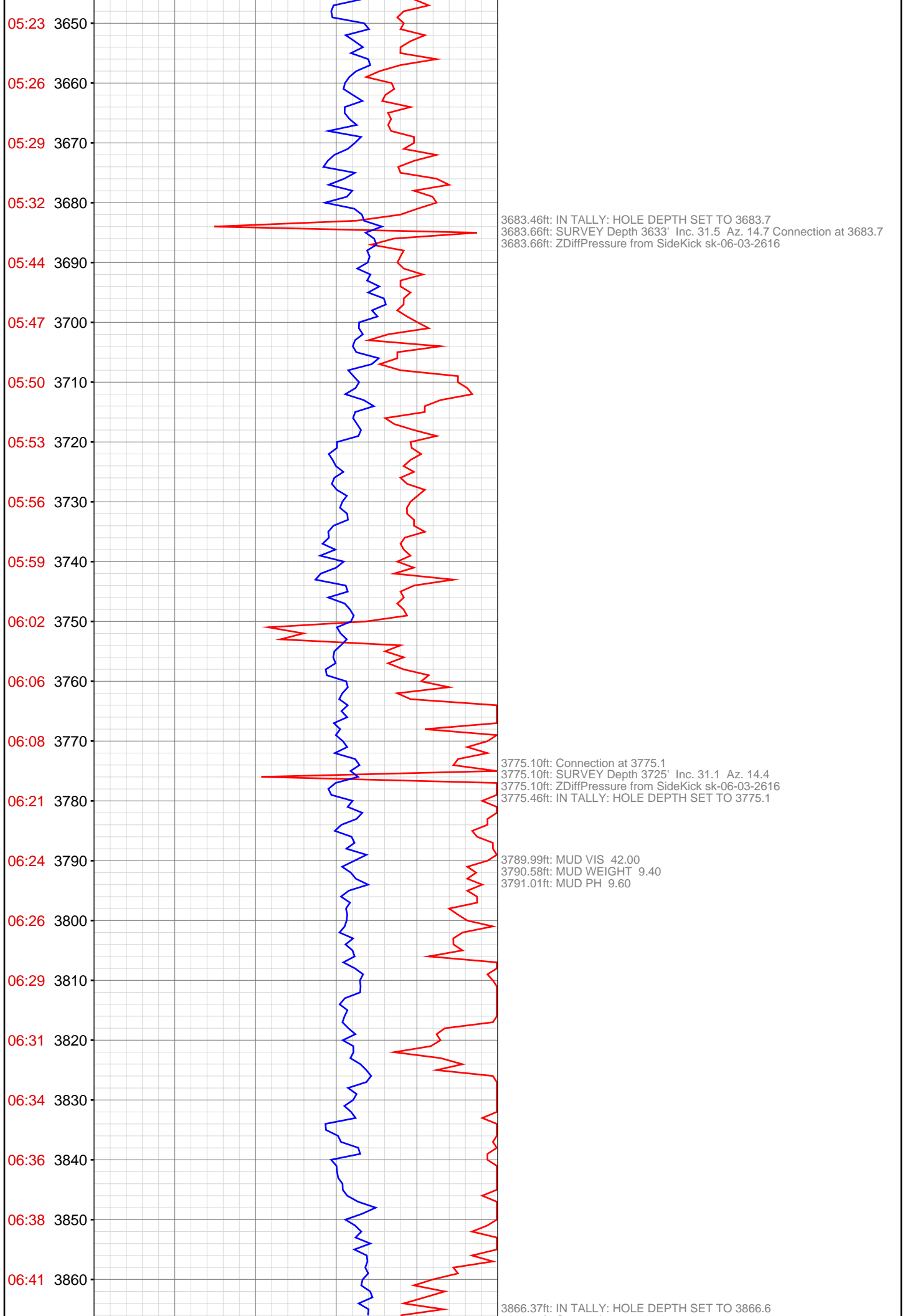
3316.67ft: IN TALLY: HOLE DEPTH SET TO 3317.5
3317.49ft: Connection at 3317.5
3317.49ft: SURVEY @ 3267 inc-31.3 azi-15.8
3317.49ft: ZWOB from SideKick sk-06-03-2616
3317.49ft: ZDiffPressure from SideKick sk-06-03-2616
3321.16ft: SLIDING

3337.57ft: ZWOB from SideKick sk-06-03-2616
3337.57ft: ZDiffPressure from SideKick sk-06-03-2616

3394.26ft: MUD VIS 42.00
3394.75ft: MUD WEIGHT 9.40
3395.01ft: MUD PH 9.70

3408.79ft: Connection at 3408.8
3408.79ft: SURVEY @ 3358 inc-32.0 azi-13.3
3408.79ft: SPR #1 30-153 40-228 50-320 W/9.4 MW @3408'
3408.79ft: SPR #2 30-153 40-229 50-324 W/9.4 MW @3408'
3408.79ft: ZDiffPressure from SideKick sk-06-03-2616
3409.22ft: IN TALLY: HOLE DEPTH SET TO 3408.8
3409.71ft: PUMPED SWEEP





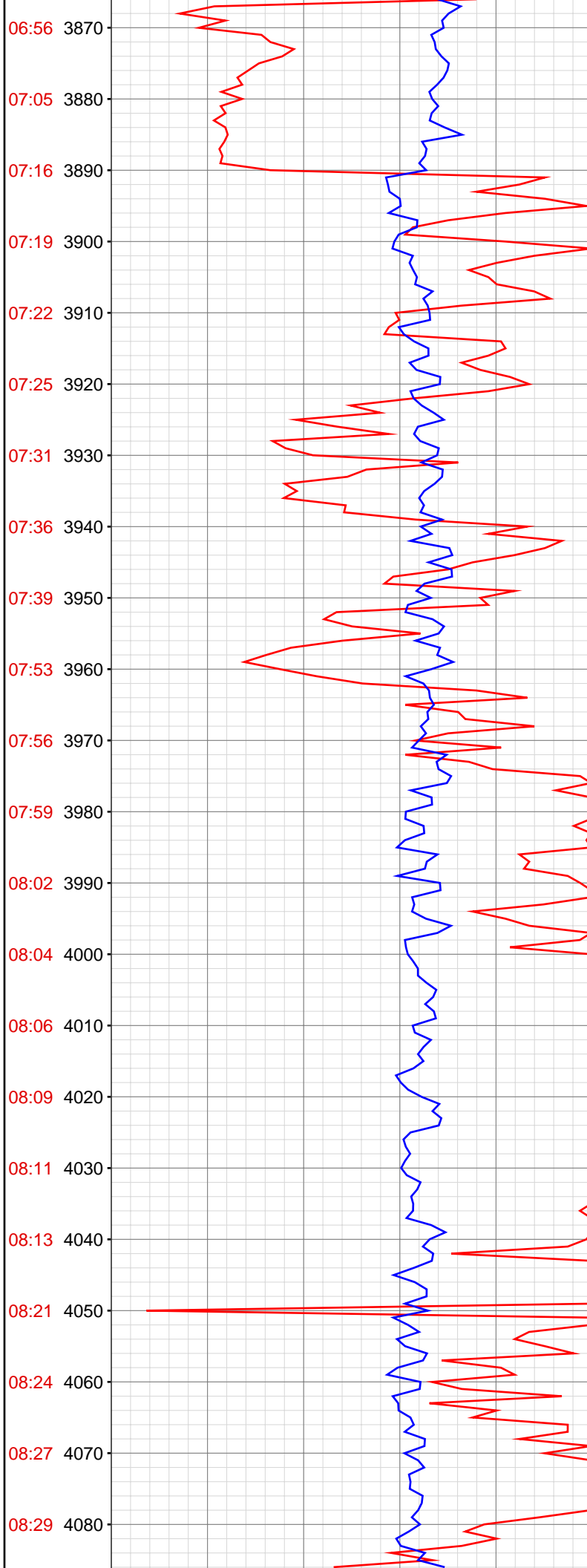
3866.57ft: Connection at 3866.6
3866.57ft: SURVEY Depth 3816' Inc. 30.6 Az. 12.8
3866.57ft: ZDiffPressure from SideKick sk-06-03-2616

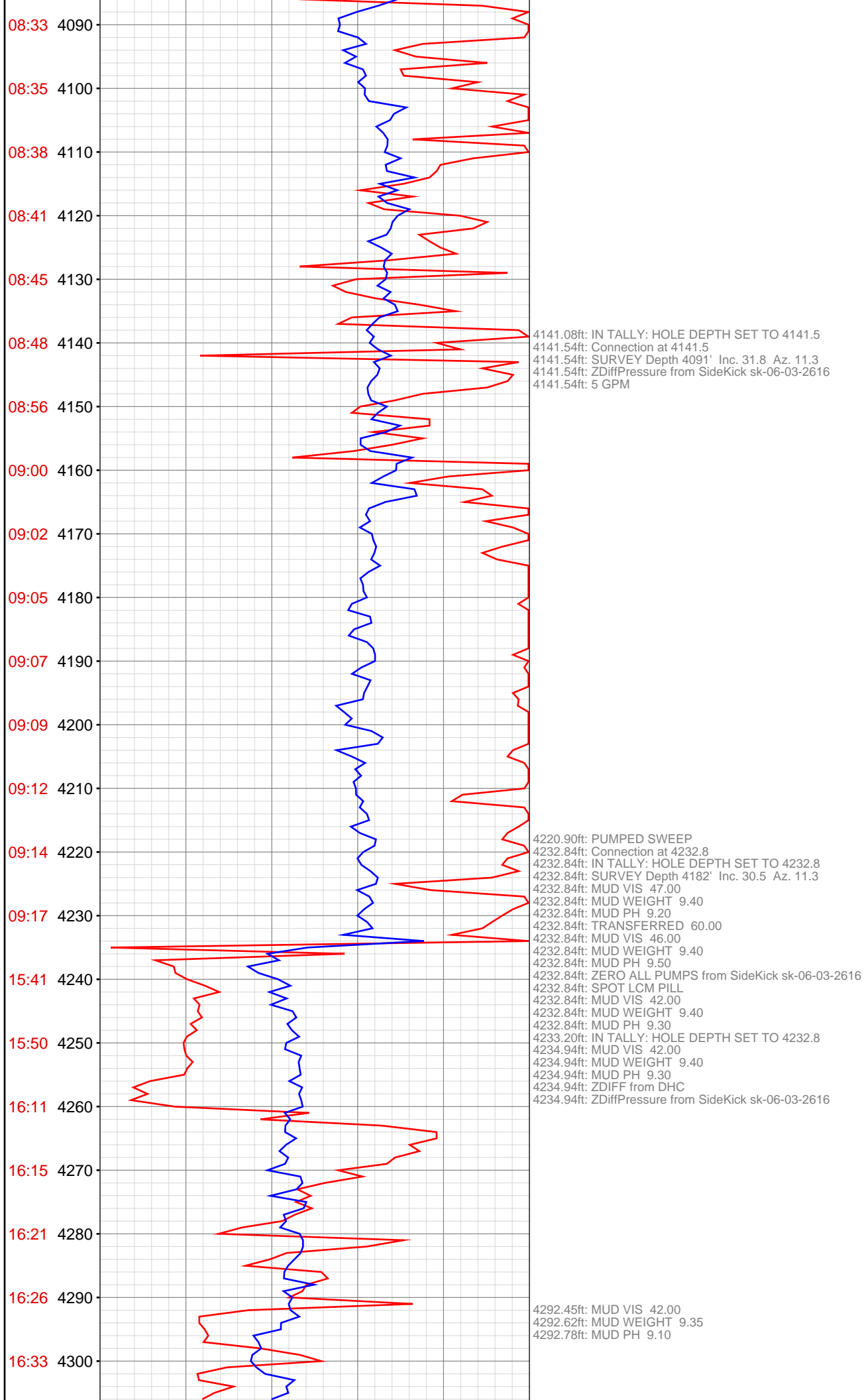
3922.83ft: PUMPED SWEEP
3925.72ft: MUD VIS 43.00
3925.72ft: MUD WEIGHT 9.40
3926.08ft: MUD PH 9.50

3958.14ft: IN TALLY: HOLE DEPTH SET TO 3958.4
3958.40ft: Connection at 3958.4
3958.40ft: SURVEY Depth 3908' Inc. 33.2 Az. 11.5
3958.40ft: ZDiffPressure from SideKick sk-06-03-2616

4049.44ft: IN TALLY: HOLE DEPTH SET TO 4049.8
4049.77ft: Connection at 4049.8
4049.77ft: SURVEY Depth 3999' Inc. 33.3 Az. 11.8
4049.77ft: ZDiffPressure from SideKick sk-06-03-2616
4049.77ft: ZDiffPressure from SideKick sk-06-03-2616

4062.14ft: PUMPED SWEEP
4065.26ft: MUD VIS 44.00
4066.01ft: MUD WEIGHT 9.40
4066.60ft: MUD PH 9.30





16:42 4310
16:48 4320
17:14 4330
17:17 4340
17:20 4350
17:27 4360
17:34 4370
17:41 4380
17:49 4390
17:52 4400
17:57 4410
18:06 4420
18:11 4430
18:18 4440
18:23 4450
18:33 4460
18:41 4470
18:47 4480
18:51 4490
18:54 4500
19:05 4510
19:09 4520



4324.48ft: RIG SERVICE
4324.48ft: SPR # 1 PUMP 30-40-50 STKS 170-243-318 PSI @ 4324' W/9.4 MW
4324.48ft: SPR # 2 PUMP 30-40-50 STKS 170-265-350 PSI @ 4324' W/9.4 MW Connection at 4324.5
4324.48ft: SURVEY Depth 4274' Inc. 31.9 Az. 13.8
4324.48ft: ZDiffPressure from SideKick sk-06-03-2616
4327.07ft: IN TALLY: HOLE DEPTH SET TO 4324.5

4379.99ft: MUD VIS 42.00
4380.25ft: MUD WEIGHT 9.40
4380.25ft: MUD PH 9.50

4415.68ft: IN TALLY: HOLE DEPTH SET TO 4415.9
4415.88ft: Connection at 4415.9
4415.88ft: MUD VIS 40.00
4415.88ft: MUD WEIGHT 9.40
4415.88ft: MUD PH 9.10
4415.88ft: SURVEY @ 4365 inc-31.9 azi-14.4
4415.88ft: ZDiffPressure from SideKick sk-06-03-2616

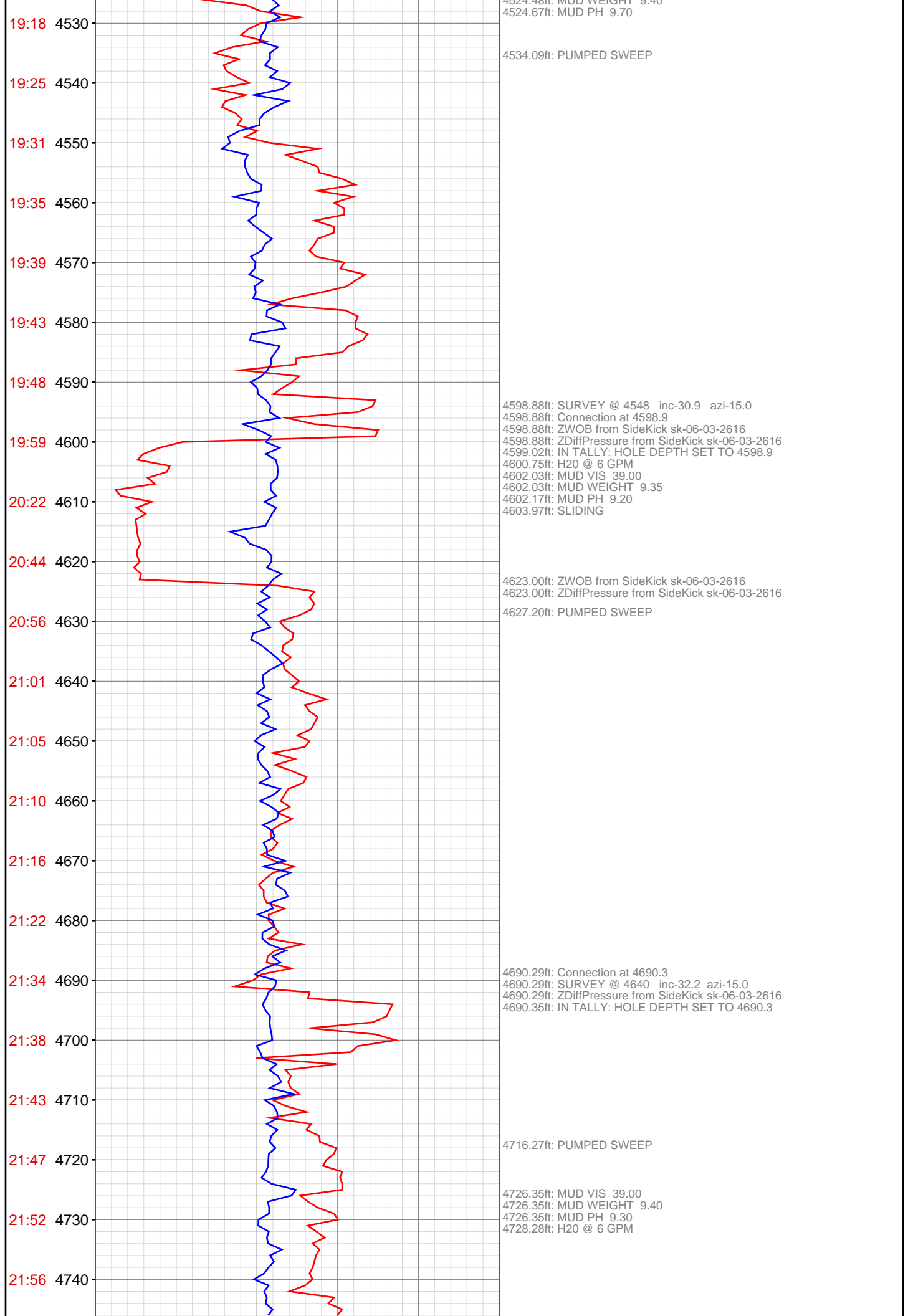
4430.41ft: PVT:Volume alarm reactivated: un-muted

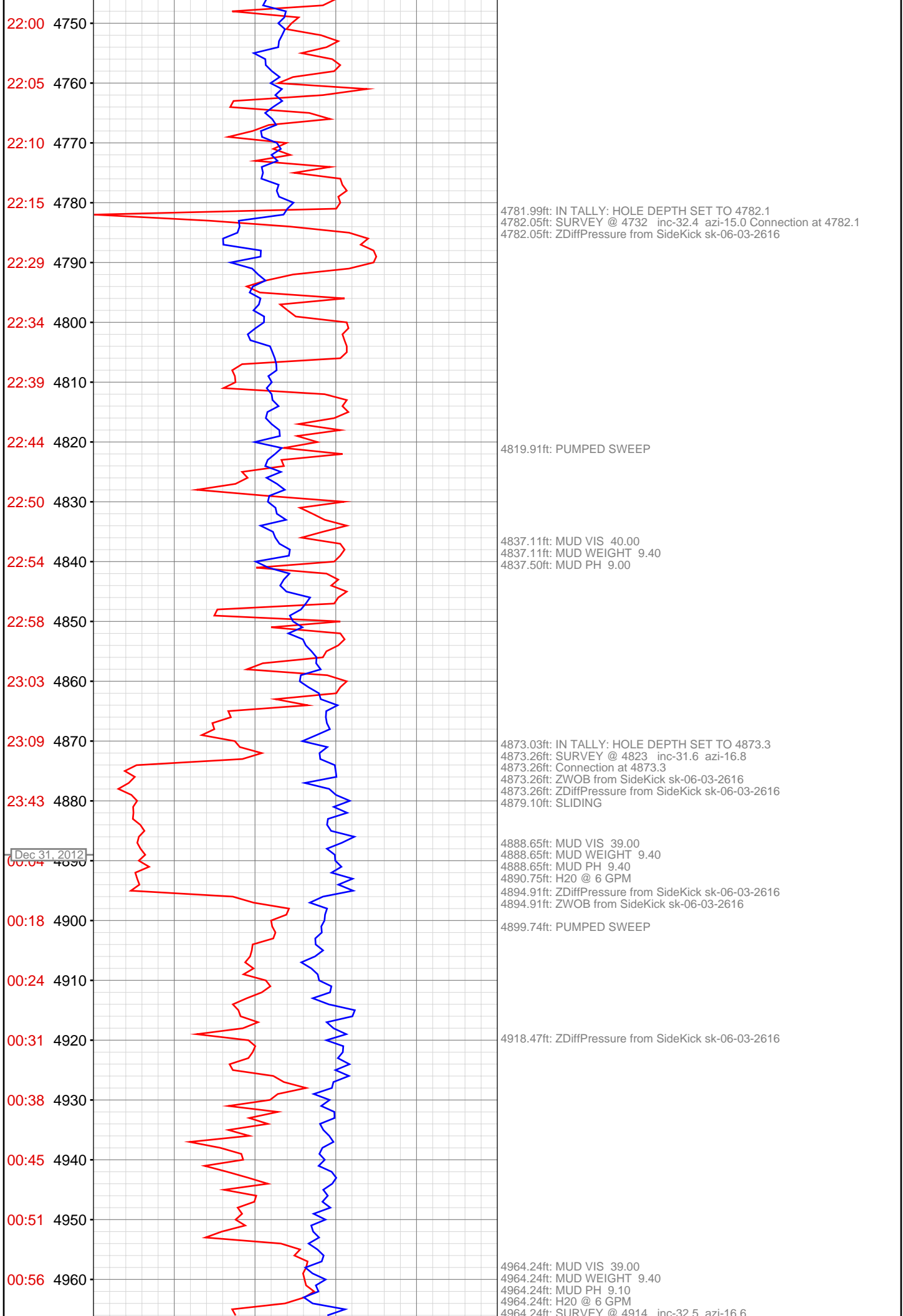
4439.90ft: PUMPED SWEEP

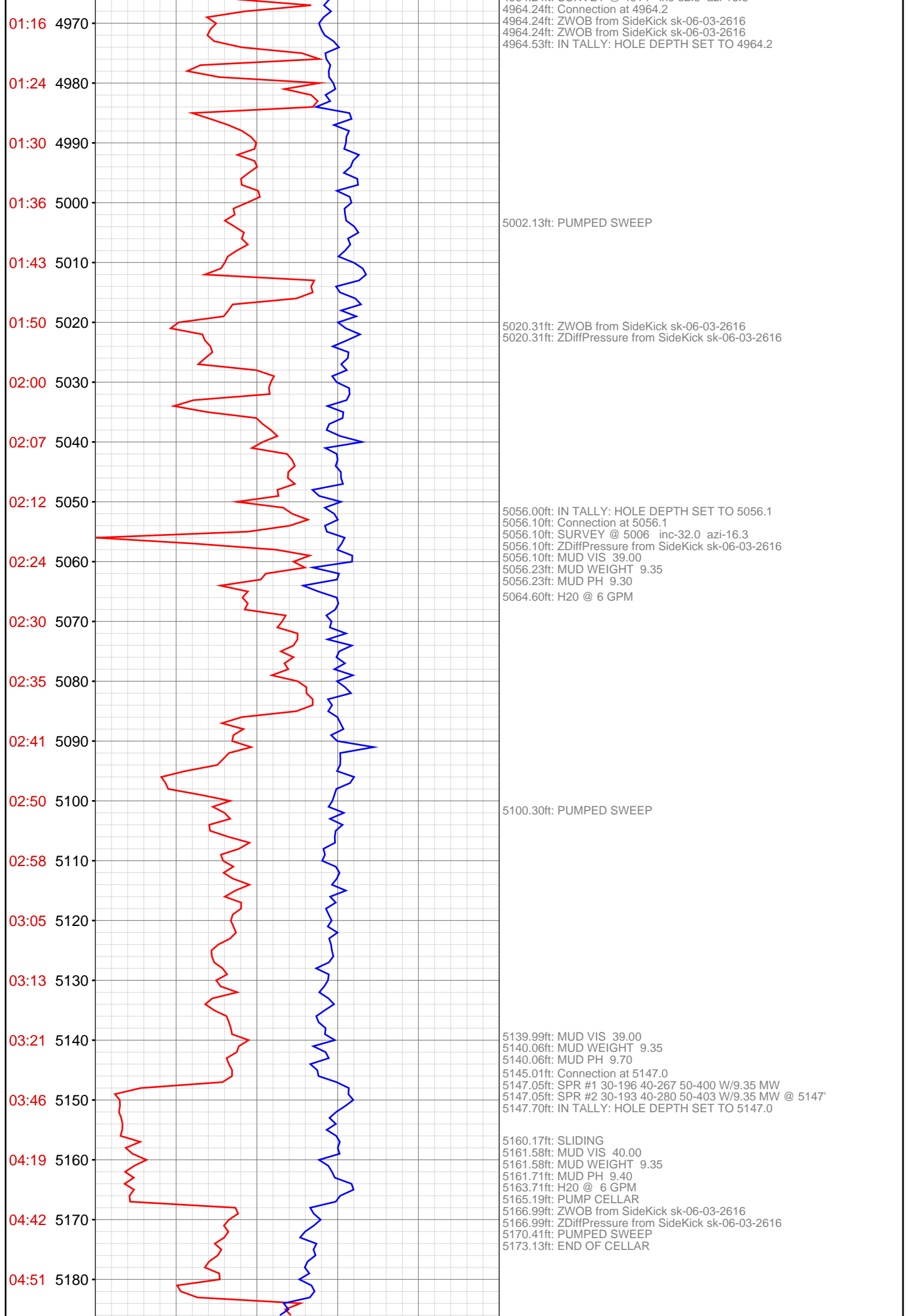
4451.77ft: ZDiffPressure from SideKick sk-06-03-2616

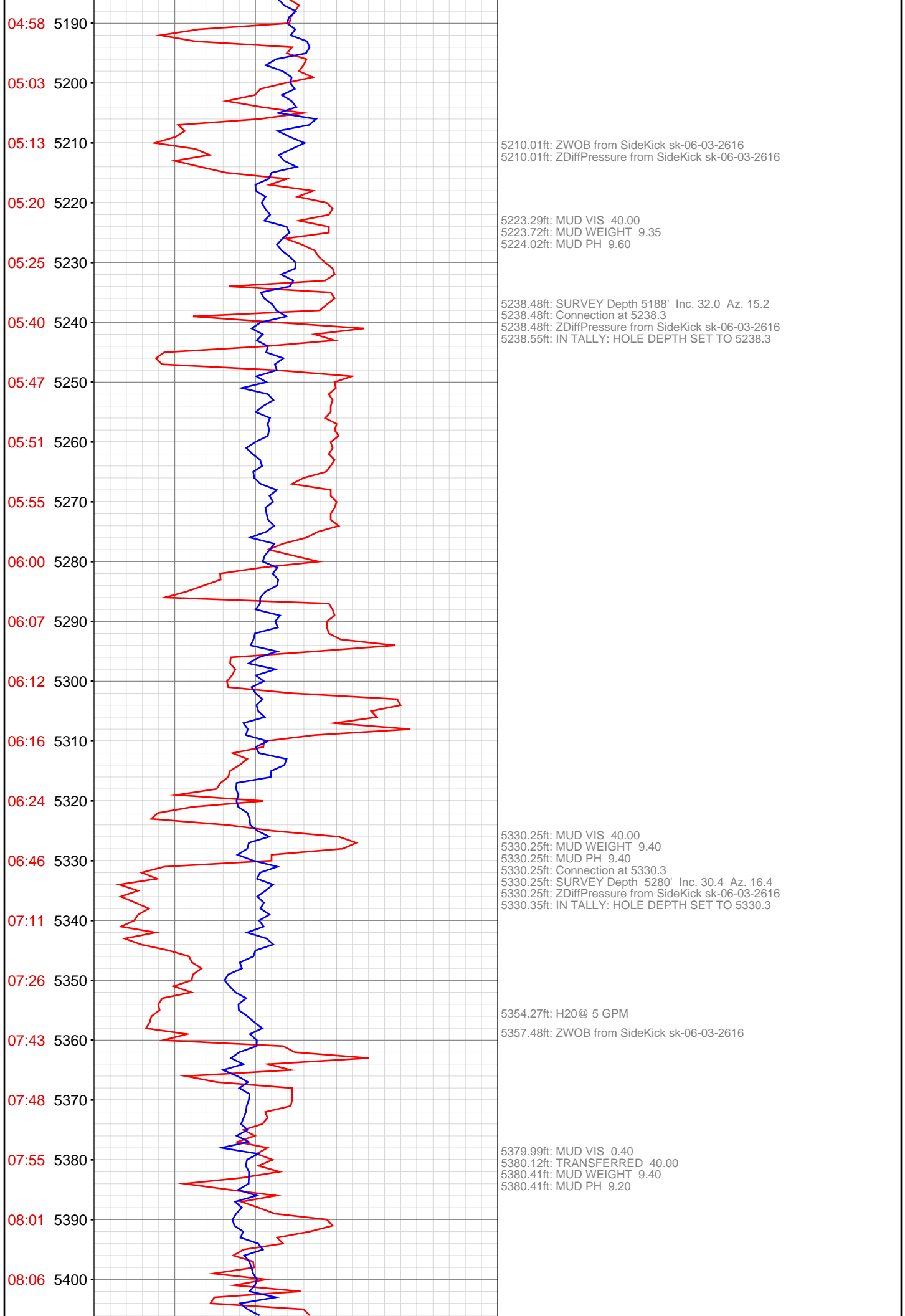
4506.99ft: IN TALLY: HOLE DEPTH SET TO 4507.3
4507.45ft: Connection at 4507.3
4507.45ft: SURVEY @ 4457 inc-31.5 azi-15.4
4507.45ft: ZDiffPressure from SideKick sk-06-03-2616

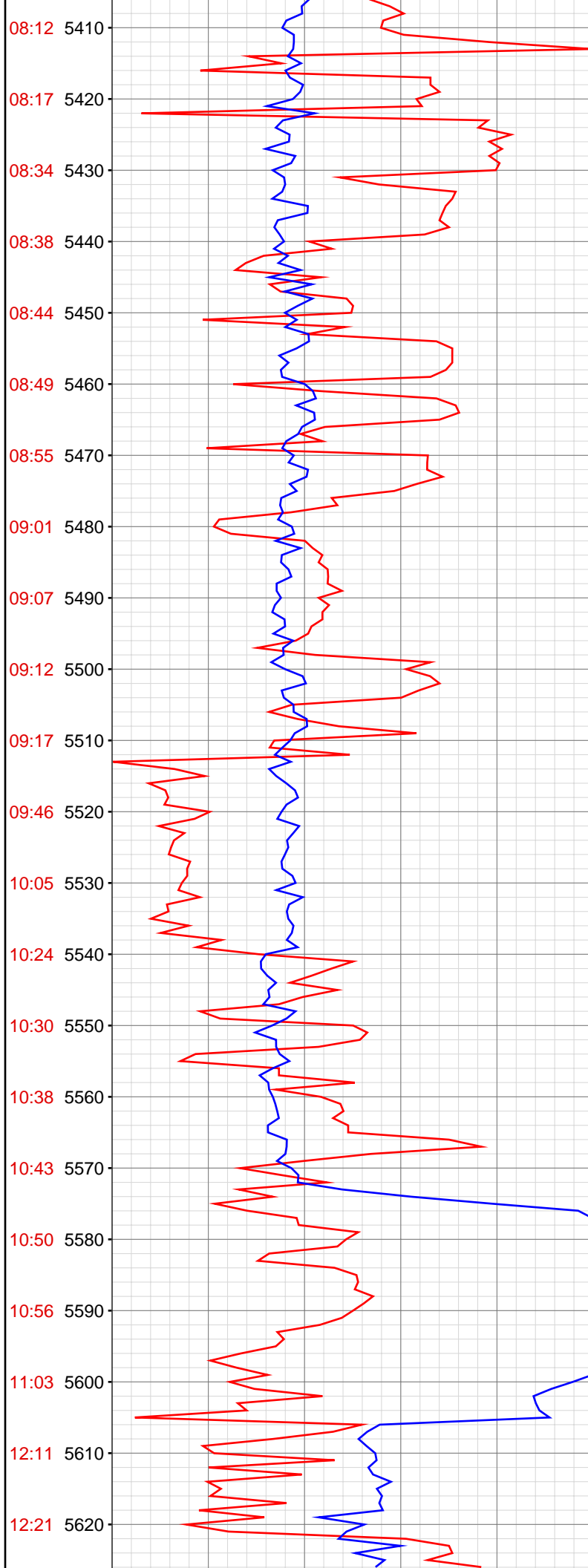
4521.49ft: H2O @ 6 GPM
4524.28ft: MUD VIS 39.00
4524.48ft: MUD WEIGHT 9.40











5421.88ft: IN TALLY: HOLE DEPTH SET TO 5421.9
5421.92ft: Connection at 5421.9
5421.92ft: SURVEY Depth 5371' Inc. 31.7 AZ. 14.3
5421.92ft: ZDiffPressure from SideKick sk-06-03-2616

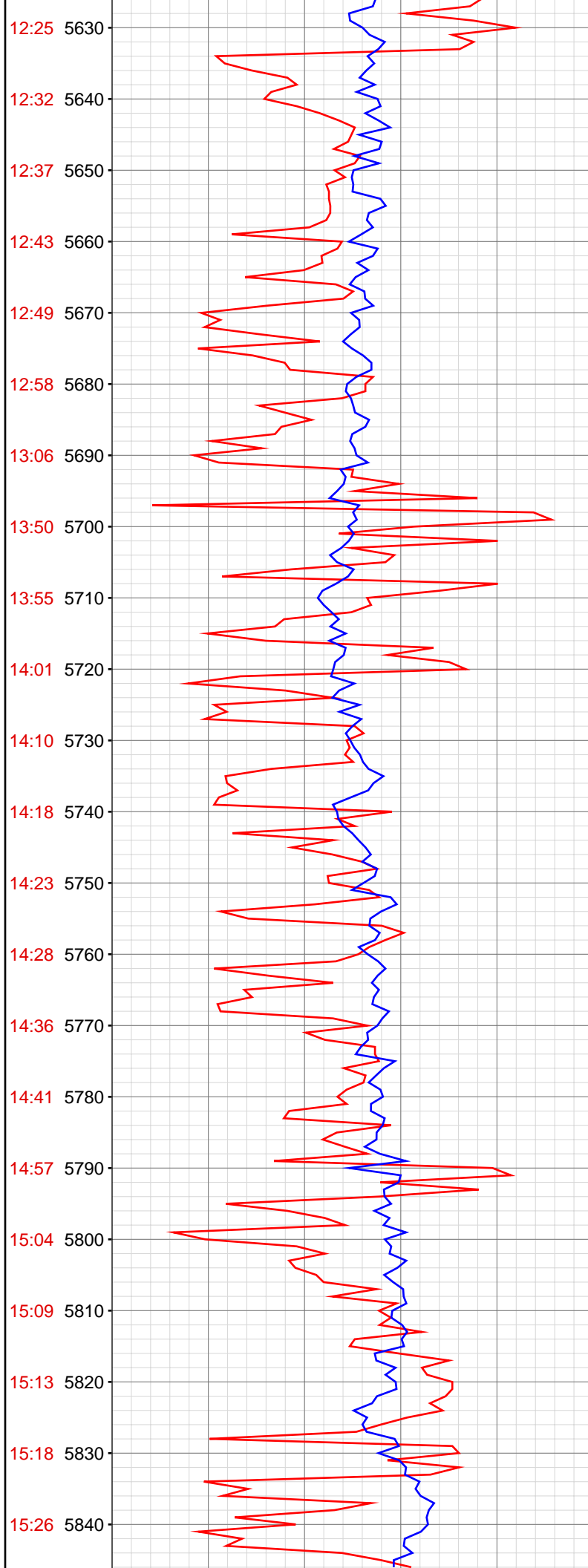
5512.99ft: IN TALLY: HOLE DEPTH SET TO 5513.4
5513.39ft: H2O@ 3 GPM
5513.39ft: Connection at 5513.4
5513.39ft: SURVEY Depth 5463' Inc. 30.2 Az. 14.9
5513.39ft: ZDiffPressure from SideKick sk-06-03-2616
5513.39ft: MUD VIS 39.00
5513.39ft: MUD WEIGHT 9.40
5513.39ft: MUD PH 9.30

5548.06ft: MUD VIS 40.00
5548.20ft: MUD WEIGHT 9.40
5548.20ft: MUD PH 9.20

5563.71ft: H2O@ 3 GPM

5572.44ft: PUMPED SWEEP

5604.63ft: RIG SERVICE
5604.86ft: SURVEY Depth 5554' Inc. 30.8 Az. 12.9
5604.86ft: MUD VIS 39.00
5604.86ft: MUD WEIGHT 9.40
5604.86ft: MUD PH 9.50
5604.86ft: Connection at 5604.9
5604.86ft: ZDiffPressure from SideKick sk-06-03-2616
5604.95ft: IN TALLY: HOLE DEPTH SET TO 5604.9



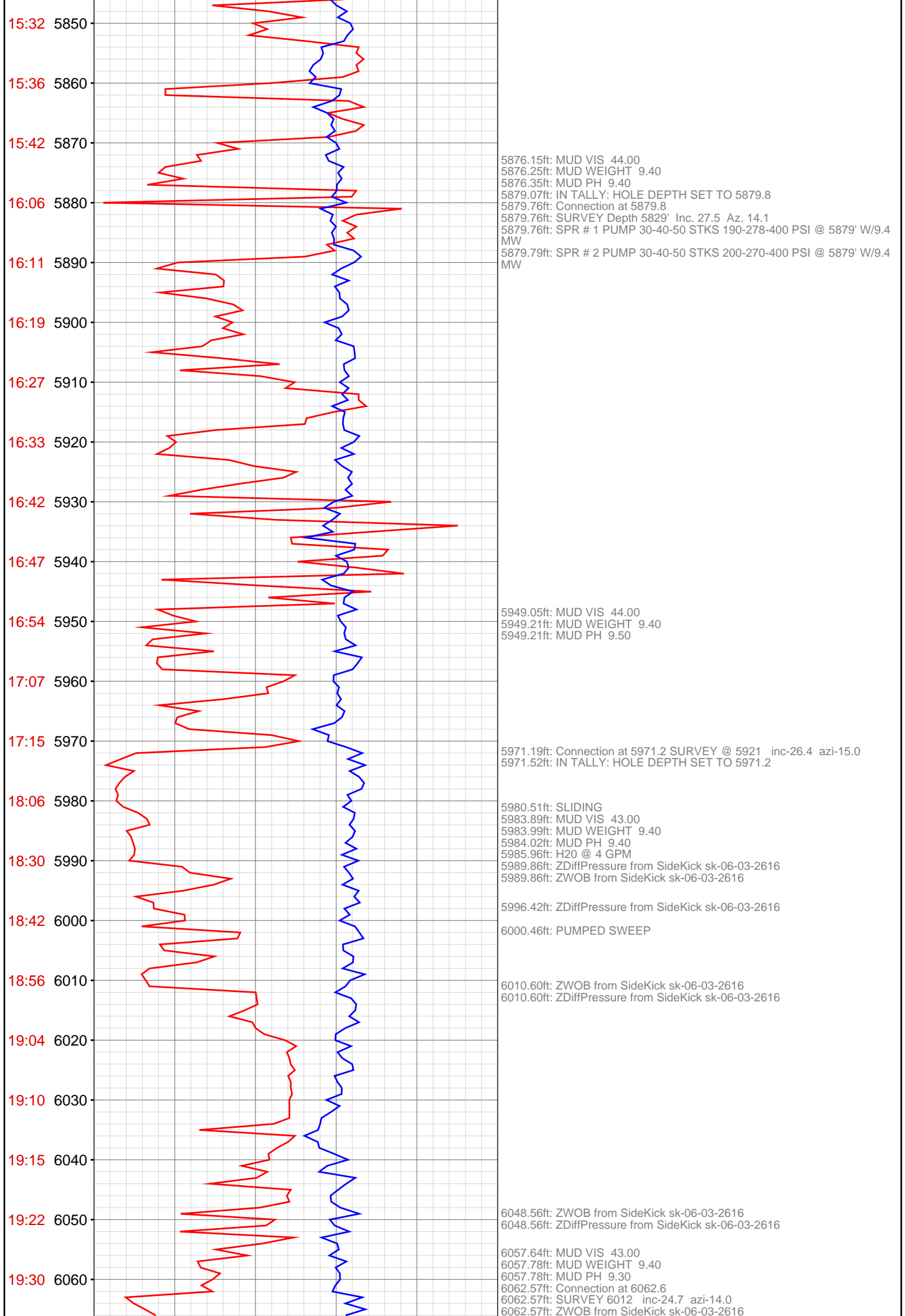
5640.35ft: MUD VIS 39.00
5640.35ft: MUD WEIGHT 9.40
5640.65ft: MUD PH 9.20

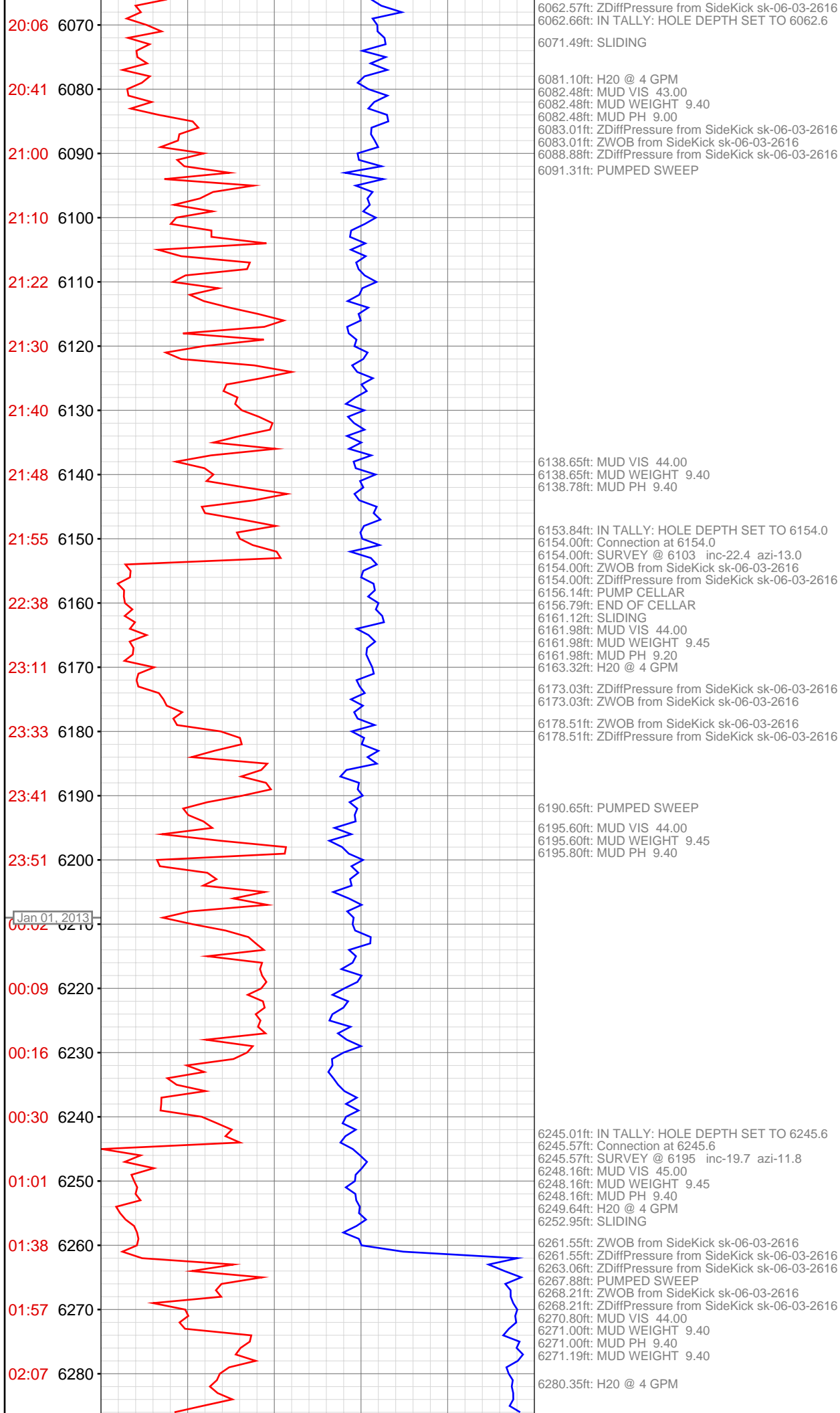
5656.73ft: H2O@ 3 GPM

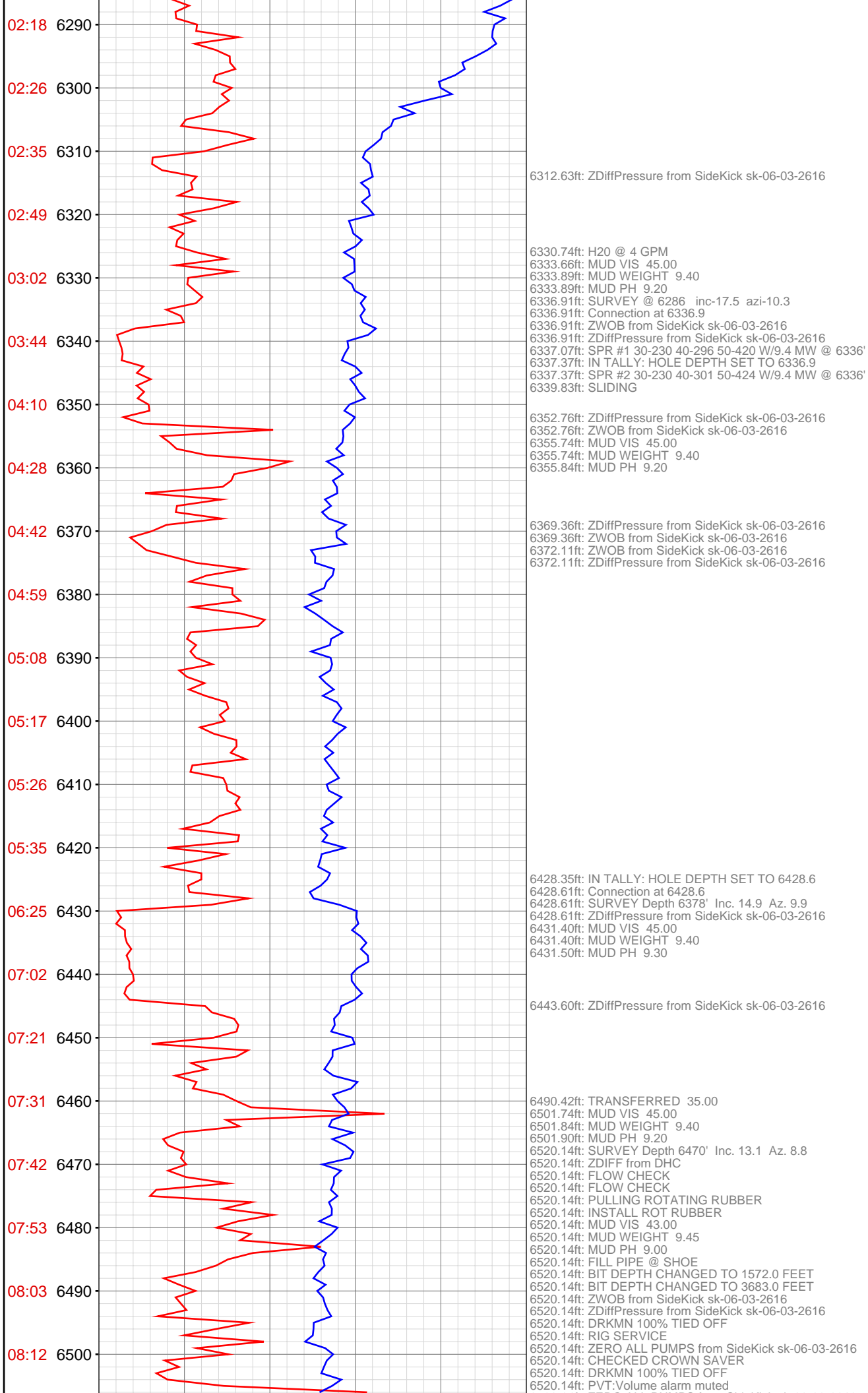
5696.10ft: IN TALLY: HOLE DEPTH SET TO 5696.7
5696.75ft: Connection at 5696.7
5696.75ft: SURVEY Depth 5646' Inc. 29.4 Az. 13.9
5696.75ft: LAY DOWN WASHED JOINT
5696.75ft: MUD VIS 42.00
5696.75ft: MUD WEIGHT 9.40
5696.75ft: MUD PH 9.30
5696.75ft: ZDiffPressure from SideKick sk-06-03-2616

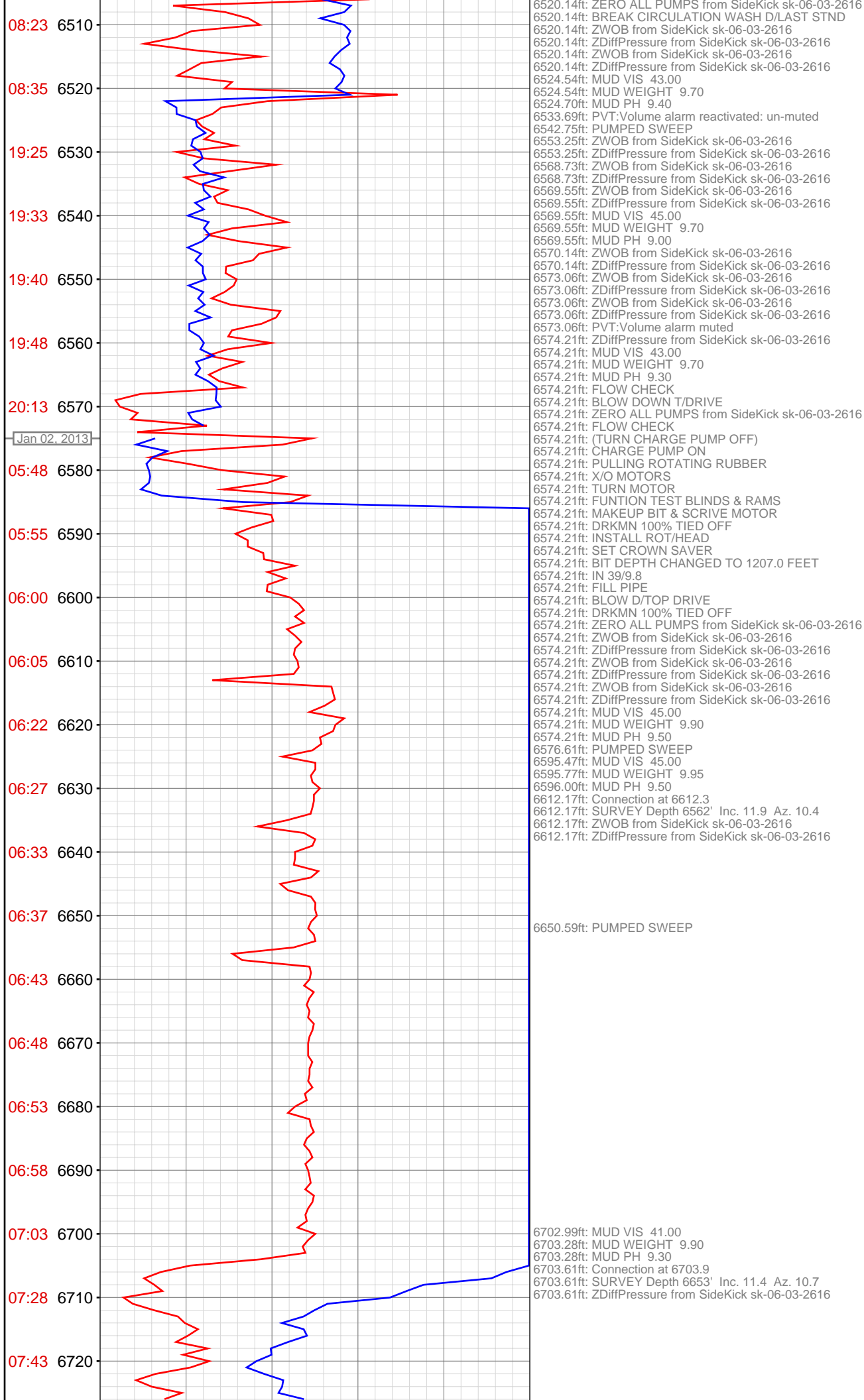
5788.16ft: Connection at 5788.1
5788.16ft: SURVEY Depth 5738' Inc. 28.3 Az. 14.5
5788.16ft: ZDiffPressure from SideKick sk-06-03-2616
5788.42ft: IN TALLY: HOLE DEPTH SET TO 5788.1

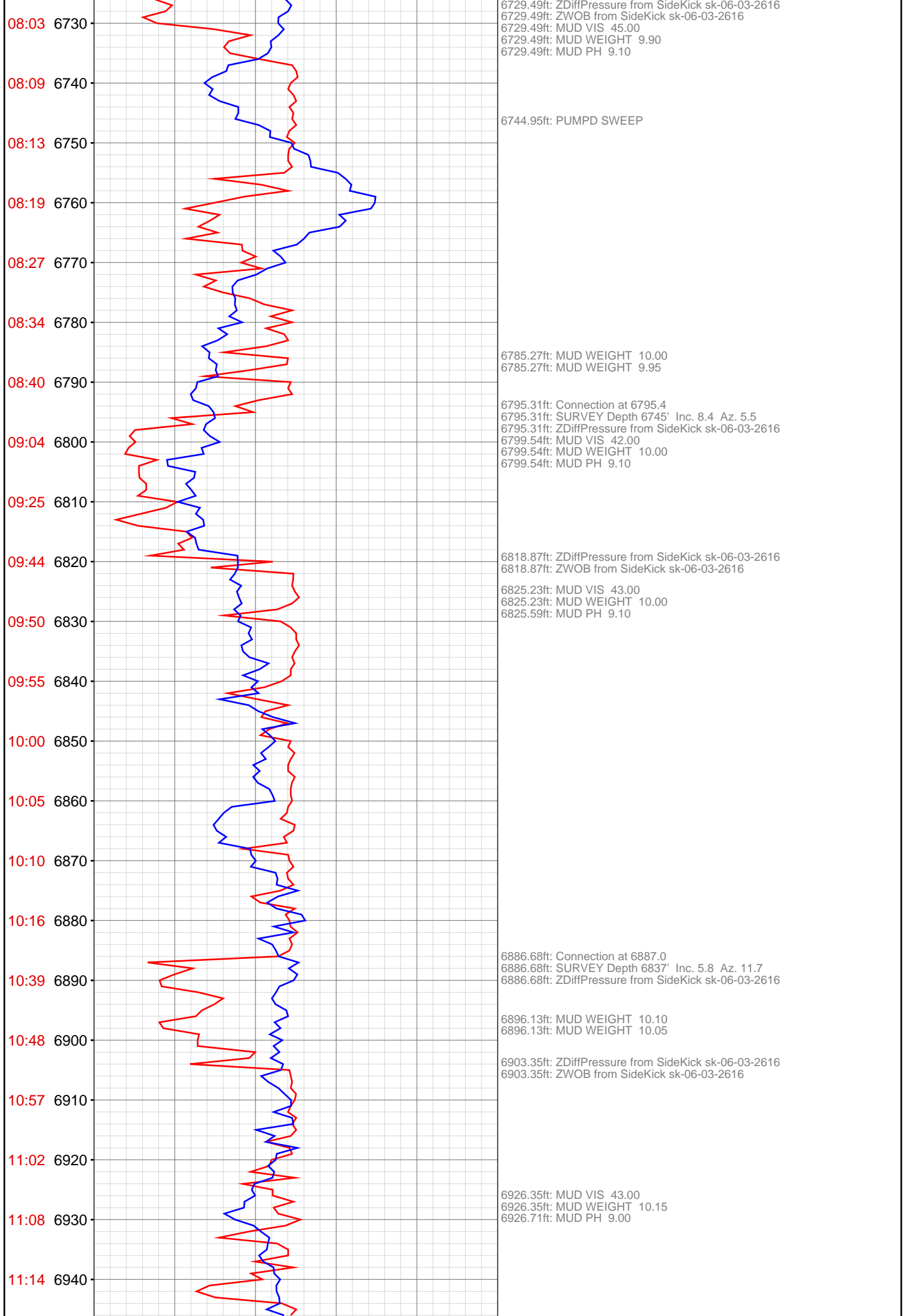
5799.41ft: H2O@3GPM











11:19 6950
11:24 6960
11:29 6970
11:46 6980
11:51 6990
11:55 7000
12:00 7010
12:06 7020
12:11 7030
12:16 7040
12:20 7050
12:25 7060
12:50 7070
13:05 7080
13:23 7090
13:32 7100
13:37 7110
13:44 7120
13:51 7130
13:57 7140
14:02 7150
14:08 7160

6972.38ft: MUD WEIGHT 10.15
6972.64ft: MUD WEIGHT 10.15
6978.12ft: Connection at 6978.8
6978.12ft: SURVEY Depth 6928' Inc. 4.1 Az. 5.6
6978.12ft: ZWOB from SideKick sk-06-03-2616
6978.12ft: ZDiffPressure from SideKick sk-06-03-2616

7050.49ft: MUD VIS 42.00
7050.49ft: MUD WEIGHT 10.25
7050.82ft: MUD PH 9.20

7069.13ft: MUD WEIGHT 10.25
7069.13ft: MUD WEIGHT 10.25
7069.13ft: SURVEY Depth 7020' Inc. 4.1 Az. 4.1
7069.13ft: Connection at 7070.6
7069.13ft: ZDiffPressure from SideKick sk-06-03-2616
7076.87ft: MUD VIS 41.00
7077.00ft: MUD WEIGHT 10.25
7077.00ft: MUD PH 9.10

7091.37ft: ZDiffPressure from SideKick sk-06-03-2616
7091.37ft: ZWOB from SideKick sk-06-03-2616

7143.18ft: MUD VIS 43.00
7143.50ft: MUD WEIGHT 10.30
7143.87ft: MUD PH 9.10

7160.86ft: RIG SERVICE
7160.86ft: SURVEY Depth 7112' Inc. 1.7 Az. 13.7
7160.86ft: Connection at 7162.4
7160.86ft: ZWOB from SideKick sk-06-03-2616
7160.86ft: ZDiffPressure from SideKick sk-06-03-2616

7180.60ft: ZDiffPressure from SideKick sk-06-03-2616

7174.31ft: MUD WEIGHT 10.35
7174.61ft: MUD WEIGHT 10.35

7180.84ft: PUMPED SWEEP

7211.45ft: MUD VIS 42.00
7211.81ft: MUD WEIGHT 10.40
7212.11ft: MUD PH 9.00

7252.49ft: Connection at 7253.4
7252.49ft: SURVEY Depth 7203' Inc. 1.4 Az. 21.4
7252.49ft: ZDiffPressure from SideKick sk-06-03-2616
7252.49ft: ZWOB from SideKick sk-06-03-2616

7262.14ft: MUD WEIGHT 10.45
7262.43ft: MUD WEIGHT 10.45

7292.03ft: MUD VIS 43.00
7292.03ft: MUD WEIGHT 10.50
7292.42ft: MUD PH 9.00

7344.09ft: Connection at 7345.0
7344.09ft: SURVEY Depth 7294' Inc. 1.6 Az. 40.1
7344.09ft: ZWOB from SideKick sk-06-03-2616
7344.09ft: ZDiffPressure from SideKick sk-06-03-2616

