

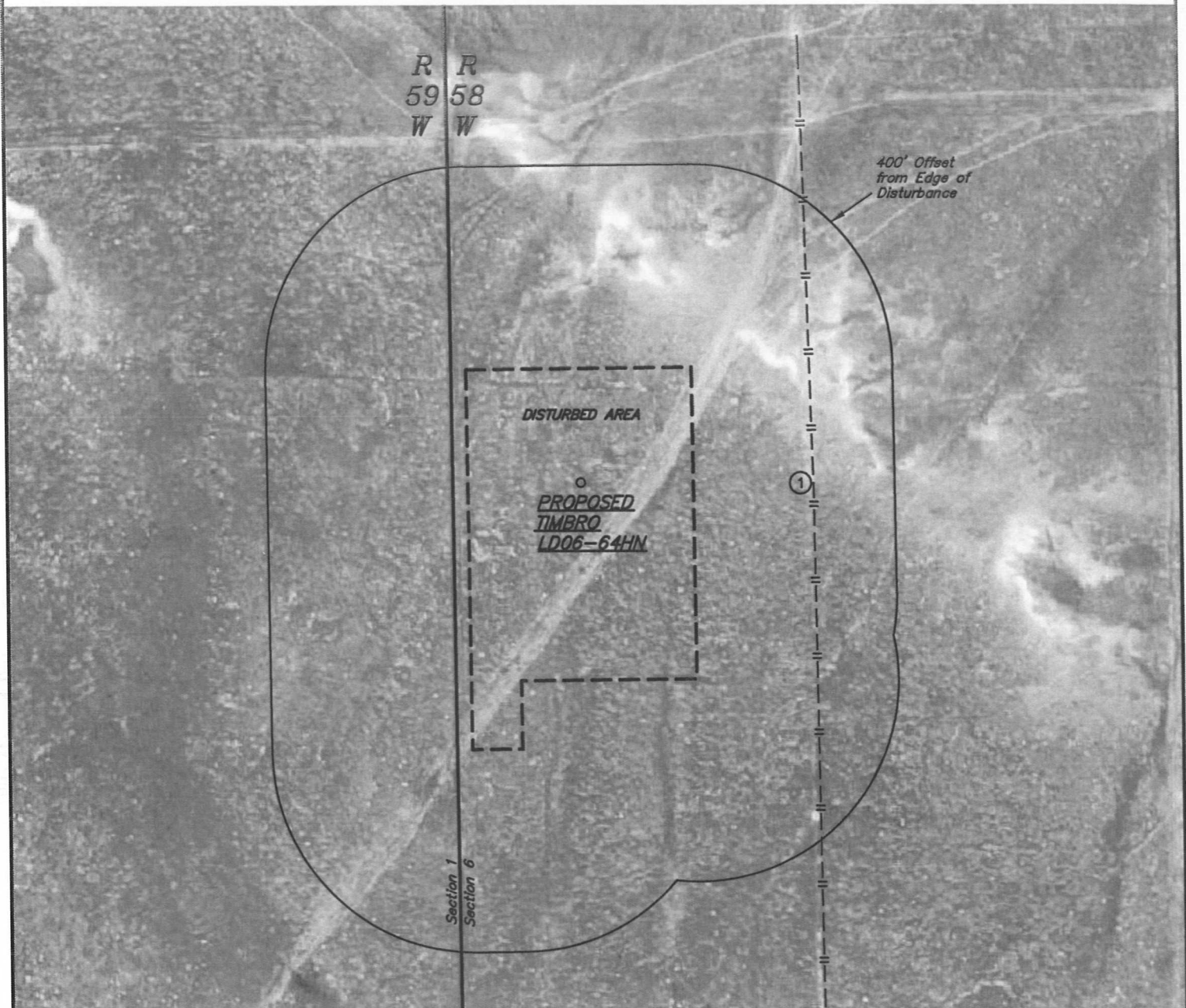
NOBLE ENERGY, INC.

LOCATION DRAWING

TIMBRO LD06-64HN

SECTION 6, T9N, R58W, 6th P.M.

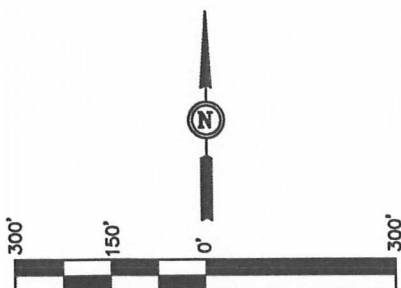
DATE: 10-17-12  
DRAWN BY: S.R.L.



NOTE:  
DIRECTION AND DISTANCE TO IMPROVEMENTS AND NEAREST FEATURES ARE FROM PROPOSED TIMBRO LD06-64HN.

IMPROVEMENTS:

- ① UNDERGROUND CABLE 463' E



NEAREST FEATURE: BUILDING 5280' +, PUBLIC ROAD  
3339' N (CR 110), ABOVE GROUND UTILITY 5280' +,  
RAILROAD 5280' +, PROPERTY LINE 255' W.

UINTAH ENGINEERING & LAND SURVEYING  
85 So. 200 East \* Vernal, Utah 84078 \* (435) 789-1017