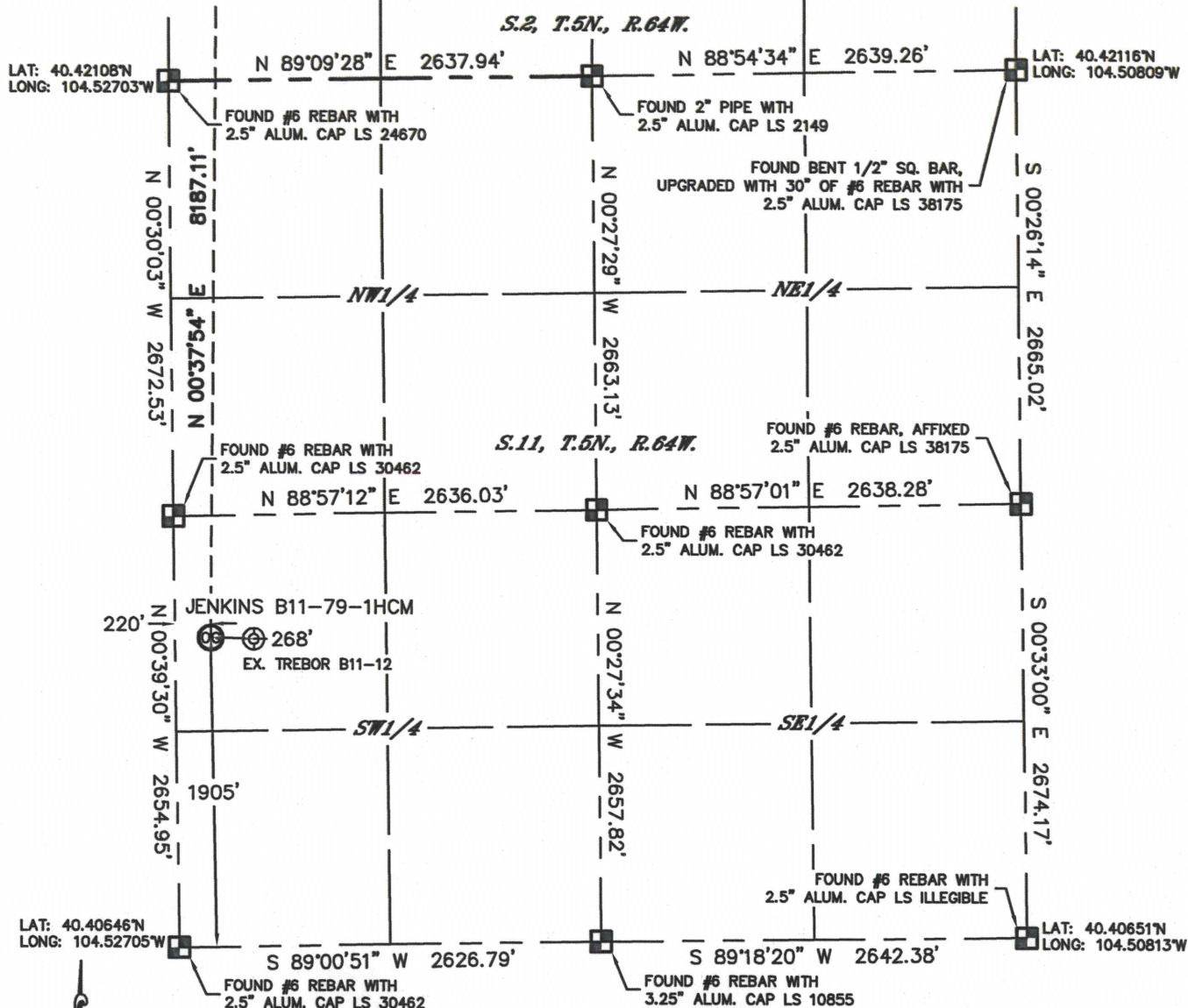


# WELL LOCATION CERTIFICATE

SECTION: 11  
TOWNSHIP: 5N  
RANGE: 64W

THIS MAP DOES NOT REPRESENT A BOUNDARY SURVEY



In accordance with a request from Mike Rodine with Noble Energy Inc., Lat40°, Inc. has determined the surface location of the JENKINS B11-79-1HCM to be 1905' from the SOUTH line and 220' from the WEST line as measured at right angles from the section lines of Section 11, Township 5 North, Range 64 West and the bottom line to be 535' from the NORTH line and 330' from the WEST line as measured at right angles from the section lines of Section 2, Township 5 North, Range 64 West of the Sixth Principal Meridian, County of Weld, State of Colorado.

I hereby state that this Well Location Certificate was prepared by me, or under my direct supervision, that the fieldwork was completed on 4/5/2012, for and on behalf of Noble Energy Inc. That this is not a Land Survey Plat or an Improvement Survey Plat, and that it is not to be relied upon for establishment of fence, building, or other future improvement lines.

## NOTE:

- 1) Bearings shown are Grid Bearings of the Colorado State Plane Coordinate System, North Zone, North American Datum 1983/2007. The lineal dimensions as contained herein are based upon the "U.S. Survey Foot."
- 2) Ground elevations are based on an observed GPS elevation (NAVD 1988 DATUM).
- 3) NEAREST EXISTING WELL: TREBOR B11-12, 268'
- 4) IMPROVEMENTS: See LOCATION DRAWING for all visible improvements within 400' of disturbed area.
- 5) SURFACE USE: CROP LAND
- 6) INSTRUMENT OPERATOR: ADAM KELLY

## NOTE

According to Colorado law, you must commence any legal action based upon any defect in this W.L.C. within three years after you discover such defect. In no event, may any action based upon any defect in this survey be commenced more than ten years after the date of the certificate shown hereon. (13-80-105 C.R.S.)

## LEGEND

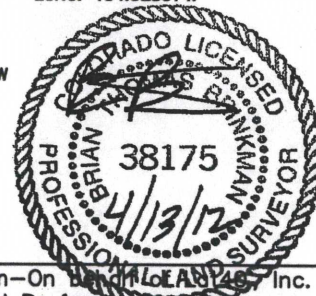
- = ALIQUOT MONUMENT AS DESCRIBED
- = CALCULATED POSITION

## SURFACE LOCATION

LAT: 40.41169°N  
LONG: 104.52626°W  
PDOP: 1.9  
ELEV: 4803'  
1/4, 1/4: NW1/4SW1/4  
NEAREST PROPERTY LINE: 220' W

## BOTTOM HOLE

LAT: 40.43415°N  
LONG: 104.52561°W



(SHEET 1 OF 2)

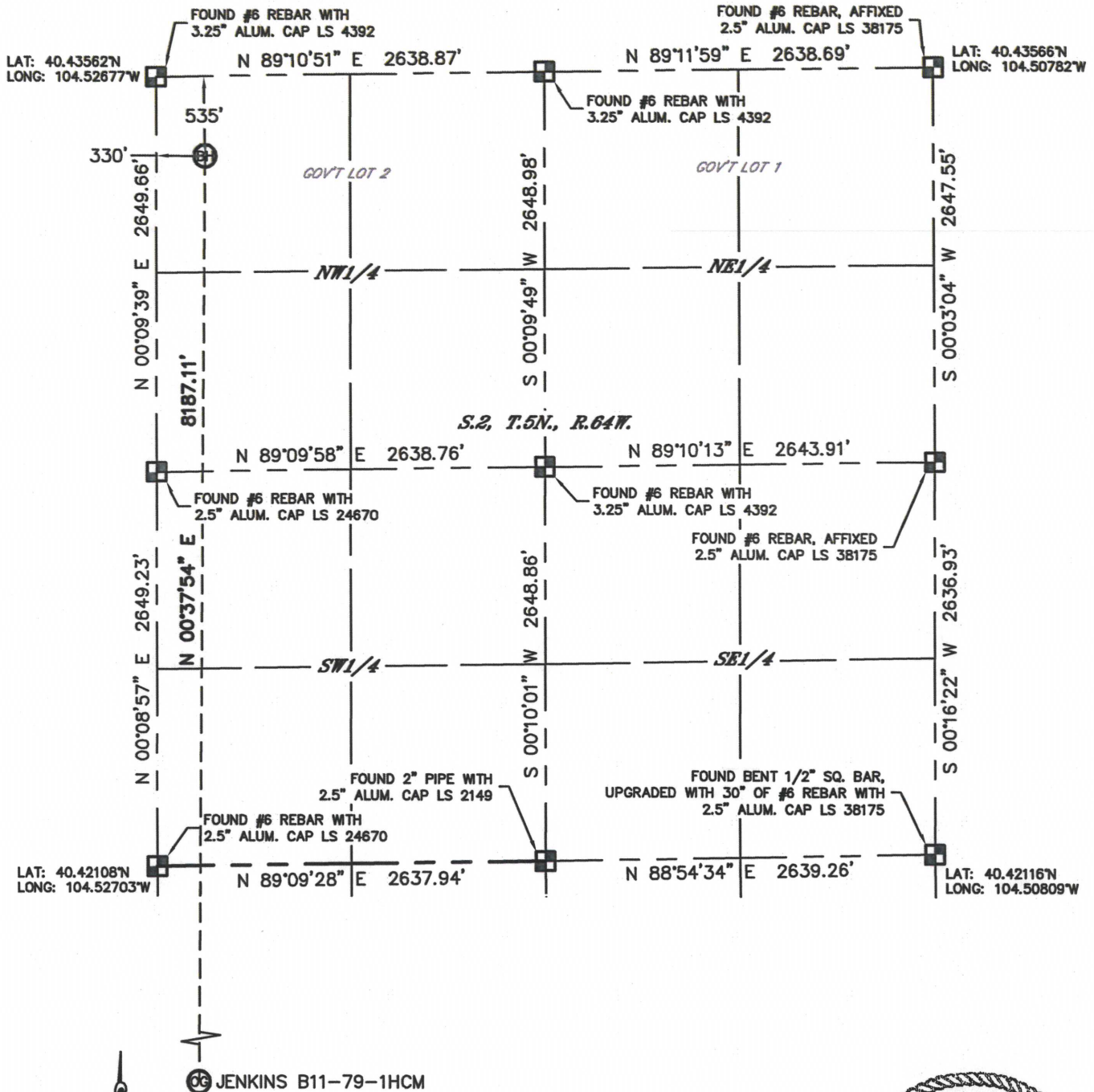
Brian T. Brinkman-On Behalf of Lat40°, Inc.  
Colorado Licensed Professional Land Surveyor No. 38175  
DATE: 4/5/2012  
PROJECT#: 2012029

Lat40°, Inc. 1635 Foxtrail Drive, Suite 325 Loveland, CO 970-776-3321

# WELL LOCATION CERTIFICATE

THIS MAP DOES NOT REPRESENT A BOUNDARY SURVEY



SECTION: 11  
TOWNSHIP: 5N  
RANGE: 64W



## NOTE

According to Colorado law, you must commence any legal action based upon any defect in this W.L.C. within three years after you discover such defect. In no event, may any action based upon any defect in this survey be commenced more than ten years after the date of the certificate shown hereon. (13-80-105 C.R.S.)

## LEGEND

-  = ALIQUOT MONUMENT AS DESCRIBED
-  = CALCULATED POSITION

(SHEET 2 OF 2)

Brian T. Brinkman—On behalf of Lat40°, Inc.

Colorado Licensed Professional  
Land Surveyor No. 38175

DATE: 4/5/2012  
PROJECT#: 2012029

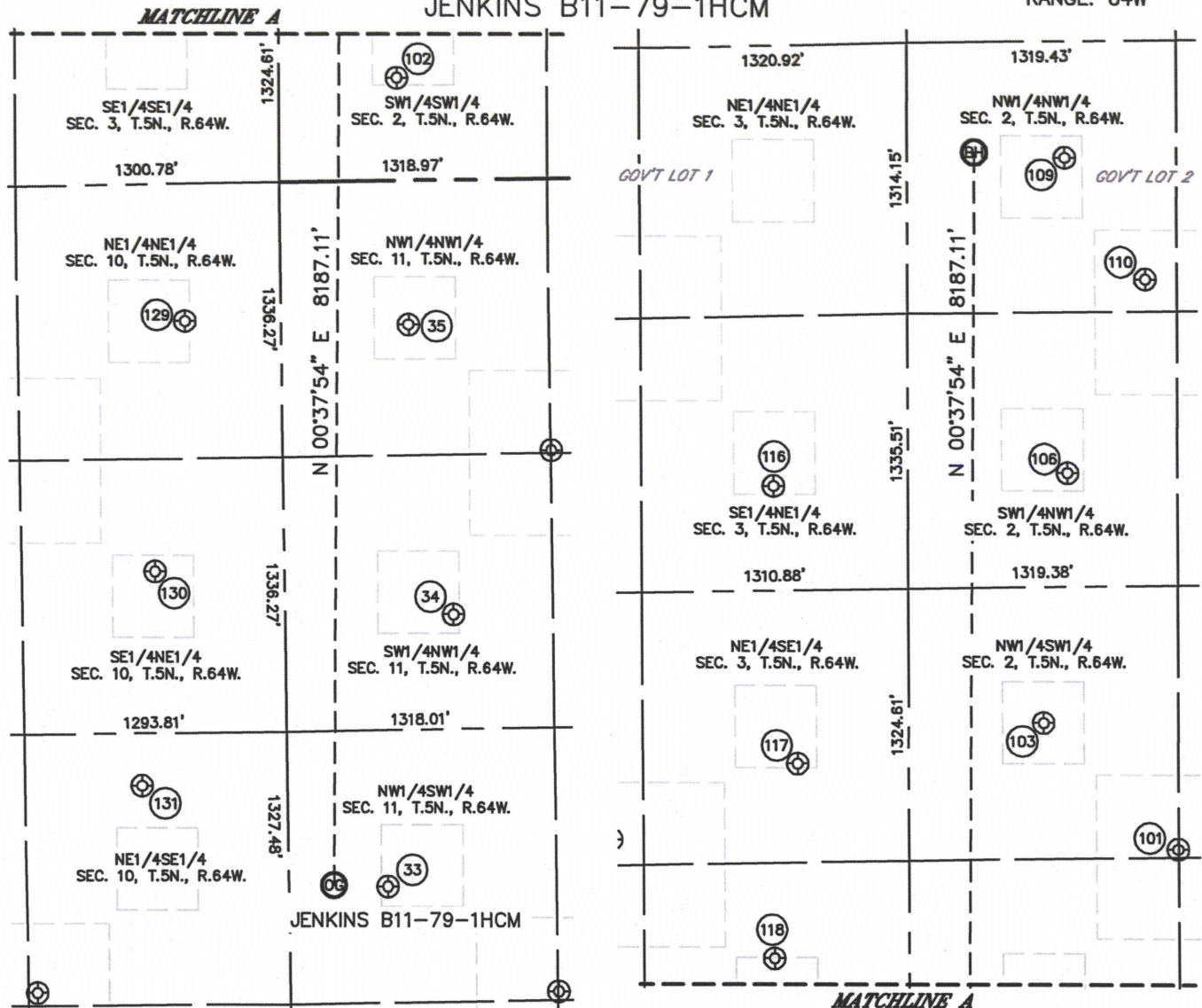




# SITE SKETCH

JENKINS B11-79-1HCM

SECTION: 11  
TOWNSHIP: 5N  
RANGE: 64W



(33)  
TREBOR B11-12  
NW1/4SW1/4  
1894' FSL  
488' FWL  
LAT-40.41166°N  
LONG-104.52530°W  
PDOP: 1.4  
ELEV: 4603'

(34)  
TREBOR B11-5  
SW1/4NW1/4  
2112' FNL  
831' FWL  
LAT-40.41529°N  
LONG-104.52407°W  
PDOP: 1.2  
ELEV: 4602'

(35)  
TREBOR B11-4  
NW1/4NW1/4  
700' FNL  
628' FWL  
LAT-40.41916°N  
LONG-104.52478°W  
PDOP: 2.3  
ELEV: 4608'

(101)  
BUCKMUR B2-25  
NW1/4SW1/4  
1363' FSL  
1317' FWL  
LAT-40.42483°N  
LONG-104.52224°W  
PDOP: 2.5  
ELEV: 4620'

(102)  
BUCKLEN 1-2  
SW1/4SW1/4  
499' FSL  
580' FWL  
LAT-40.42245°N  
LONG-104.52493°W  
PDOP: 1.5  
ELEV: 4611'

(103)  
BUCKLEN B2-12  
NW1/4SW1/4  
1987' FSL  
660' FWL  
LAT-40.42654°N  
LONG-104.52457°W  
PDOP: 1.6  
ELEV: 4625'

(106)  
BAKER B2-5  
SW1/4NW1/4  
2097' FNL  
781' FWL  
LAT-40.42987°N  
LONG-104.52407°W  
PDOP: 1.9  
ELEV: 4639'

(109)  
BAKER B2-4  
NW1/4NW1/4  
2097' FNL  
772' FWL  
LAT-40.43407°N  
LONG-104.52403°W  
PDOP: 1.4  
ELEV: 4638'

(110)  
FRITZLER B02-19  
NW1/4NW1/4  
1161' FNL  
1164' FWL  
LAT-40.43244°N  
LONG-104.52265°W  
PDOP: 1.1  
ELEV: 4629'

(116)  
CLEMONS 42-3  
SE1/4NE1/4  
2138' FNL  
661' FEL  
LAT-40.42973°N  
LONG-104.52925°W  
PDOP: 1.4  
ELEV: 4634'

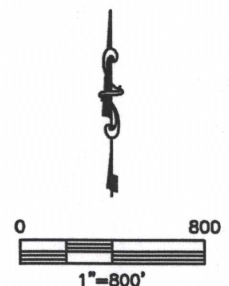
(117)  
ANNIE B3-9  
NE1/4SE1/4  
1806' FSL  
547' FEL  
LAT-40.42602°N  
LONG-104.52891°W  
PDOP: 1.3  
ELEV: 4613'

(118)  
SCHOENLEBER 16-3  
SE1/4SE1/4  
860' FSL  
662' FEL  
LAT-40.42342°N  
LONG-104.52937°W  
PDOP: 1.3  
ELEV: 4607'

(129)  
PDC-WACKER 41-10  
NE1/4NE1/4  
667' FNL  
473' FEL  
LAT-40.41924°N  
LONG-104.52874°W  
PDOP: 5.0  
ELEV: 4604'

(130)  
WACKER 42-10  
SE1/4NE1/4  
1881' FNL  
636' FEL  
LAT-40.41590°N  
LONG-104.52933°W  
PDOP: 2.1  
ELEV: 4606'

(131)  
SLW B1-10  
NE1/4SE1/4  
2394' FSL  
715' FEL  
LAT-40.41304°N  
LONG-104.52962°W  
PDOP: 1.5  
ELEV: 4610'



DATE: 4/5/2012  
PROJECT#: 2012029