

HALLIBURTON

WPX ENERGY ROCKY MOUNTAIN LLC-EBUS

**GM 341-12
GRAND VALLEY
Garfield County , Colorado**

Cement Surface Casing

27-Nov-2012

Post Job Report

The Road to Excellence Starts with Safety

Sold To #: 300721		Ship To #: 2965177		Quote #:		Sales Order #: 900019124	
Customer: WPX ENERGY ROCKY MOUNTAIN LLC-EBUS				Customer Rep: Dunihoo, Al			
Well Name: GM			Well #: 341-12			API/UWI #: 05-045-21712	
Field: GRAND VALLEY		City (SAP): PARACHUTE		County/Parish: Garfield		State: Colorado	
Lat: N 39.461 deg. OR N 39 deg. 27 min. 41.353 secs.				Long: W 108.052 deg. OR W -109 deg. 56 min. 53.804 secs.			
Contractor: CYCLONE 17			Rig/Platform Name/Num: CYCLONE 17				
Job Purpose: Cement Surface Casing							
Well Type: Development Well			Job Type: Cement Surface Casing				
Sales Person: MAYO, MARK			Srvc Supervisor: ARNOLD, EDWARD			MBU ID Emp #: 439784	

Job Personnel

HES Emp Name	Exp Hrs	Emp #	HES Emp Name	Exp Hrs	Emp #	HES Emp Name	Exp Hrs	Emp #
ARNOLD, EDWARD John	9.3	439784	LYNGSTAD, FREDRICK D	9.3	403742	ROSE, BENJAMIN Keith	9.3	487022
SINCLAIR, DAN J	9.3	338784						

Equipment

HES Unit #	Distance-1 way	HES Unit #	Distance-1 way	HES Unit #	Distance-1 way	HES Unit #	Distance-1 way
10867322	60 mile	10871245	60 mile	10998512	60 mile	11259882	60 mile
11808831	60 mile						

Job Hours

Date	On Location Hours	Operating Hours	Date	On Location Hours	Operating Hours	Date	On Location Hours	Operating Hours
11-27-2012	9.3	3.5						

TOTAL Total is the sum of each column separately

Job				Job Times			
Formation Name				Date	Time	Time Zone	
Formation Depth (MD)	Top		Bottom	Called Out	26 - Nov - 2012	21:30	MST
Form Type		BHST		On Location	27 - Nov - 2012	00:30	MST
Job depth MD	1155. ft	Job Depth TVD	1155. ft	Job Started	27 - Nov - 2012	07:47	MST
Water Depth		Wk Ht Above Floor	3. ft	Job Completed	27 - Nov - 2012	08:43	MST
Perforation Depth (MD)	From		To	Departed Loc	27 - Nov - 2012	09:45	MST

Well Data

Description	New / Used	Max pressure psig	Size in	ID in	Weight lbm/ft	Thread	Grade	Top MD ft	Bottom MD ft	Top TVD ft	Bottom TVD ft
-------------	------------	-------------------	---------	-------	---------------	--------	-------	-----------	--------------	------------	---------------

Sales/Rental/3rd Party (HES)

Description	Qty	Qty uom	Depth	Supplier
PLUG,CMTG,TOP,9 5/8,HWE,8.16 MIN/9.06 MA	1	EA		

Tools and Accessories

Type	Size	Qty	Make	Depth	Type	Size	Qty	Make	Depth	Type	Size	Qty	Make
Guide Shoe					Packer					Top Plug	9.625	1	HES
Float Shoe					Bridge Plug					Bottom Plug			
Float Collar					Retainer					SSR plug set			
Insert Float										Plug Container	9.625	1	HES
Stage Tool										Centralizers			

Miscellaneous Materials

Gelling Agt	Conc	Surfactant	Conc	Acid Type	Qty	Conc	%
Treatment Fld	Conc	Inhibitor	Conc	Sand Type	Size	Qty	

Fluid Data

Stage/Plug #: 1									
Fluid #	Stage Type	Fluid Name	Qty	Qty uom	Mixing Density lbm/gal	Yield ft ³ /sk	Mix Fluid Gal/sk	Rate bbl/min	Total Mix Fluid Gal/sk

Stage/Plug #: 1									
Fluid #	Stage Type	Fluid Name	Qty	Qty uom	Mixing Density lbm/gal	Yield ft ³ /sk	Mix Fluid Gal/sk	Rate bbl/min	Total Mix Fluid Gal/sk
1	Fresh Water Spacer		20.00	bbl	.	.0	.0	4	
2	VersaCem Lead Cement	VERSACEM (TM) SYSTEM (452010)	160.0	sacks	12.3	2.38	13.75	6.5	13.75
	13.75 Gal	FRESH WATER							
3	VersaCem Tail Cement	VERSACEM (TM) SYSTEM (452010)	160.0	sacks	12.8	2.11	11.75	6.5	11.75
	11.75 Gal	FRESH WATER							
4	Fresh Water Displacement		86.00	bbl	.	.0	.0	10	
Calculated Values		Pressures		Volumes					
Displacement	85.7	Shut In: Instant		Lost Returns		Cement Slurry	127.9	Pad	
Top Of Cement	SURFACE	5 Min		Cement Returns	30	Actual Displacement	85.7	Treatment	
Frac Gradient		15 Min		Spacers	20	Load and Breakdown		Total Job	233.6
Rates									
Circulating	RIG	Mixing	6.5	Displacement	10	Avg. Job	8		
Cement Left In Pipe	Amount	47.6FT	Reason	Shoe Joint					
Frac Ring # 1 @	ID	Frac ring # 2 @	ID	Frac Ring # 3 @	ID	Frac Ring # 4 @	ID		
The Information Stated Herein Is Correct				Customer Representative Signature					

The Road to Excellence Starts with Safety

Sold To #: 300721	Ship To #: 2965177	Quote #:	Sales Order #: 900019124
Customer: WPX ENERGY ROCKY MOUNTAIN LLC-EBUS	Customer Rep: Duniho, Al		
Well Name: GM	Well #: 341-12	API/UWI #: 05-045-21712	
Field: GRAND VALLEY	City (SAP): PARACHUTE	County/Parish: Garfield	State: Colorado
Legal Description:			
Lat: N 39.461 deg. OR N 39 deg. 27 min. 41.353 secs.		Long: W 108.052 deg. OR W -109 deg. 56 min. 53.804 secs.	
Contractor: CYCLONE 17	Rig/Platform Name/Num: CYCLONE 17		
Job Purpose: Cement Surface Casing	Ticket Amount:		
Well Type: Development Well	Job Type: Cement Surface Casing		
Sales Person: MAYO, MARK	Srv Supervisor: ARNOLD, EDWARD	MBU ID Emp #: 439784	

Activity Description	Date/Time	Cht #	Rate bbl/min	Volume bbl		Pressure psig		Comments
				Stage	Total	Tubing	Casing	
Call Out	11/26/2012 21:30							Crew called out.
Pre-Convoy Safety Meeting	11/26/2012 23:15							Including entire cement crew, discuss hazards, route, and safety.
Crew Leave Yard	11/26/2012 23:30							Leave yard for location.
Arrive At Loc	11/27/2012 00:30							
Assessment Of Location Safety Meeting	11/27/2012 06:00							Including entire cement crew, discussed hazards, and rig up. Water test: PH 7; KCL 250; SO4 <200; Fe 0; Calcium 120; Chlorides 0; Temp 40; TDS 230.
Pre-Rig Up Safety Meeting	11/27/2012 06:15							
Rig-Up Equipment	11/27/2012 06:30							1 Elite # ; 1 660 Bulk Truck; 1 hard line to rig floor; 1 line to rig tank; 1 line to upright; 1 9 5/8" compact head.
Rig-Up Completed	11/27/2012 07:15							
Pre-Job Safety Meeting	11/27/2012 07:30							Including everyone on location. Discussed hazards, emergency situations, and job procedure.
Start Job	11/27/2012 07:47							TD 1155; TP 1137; SJ 47.64; OH 13 1/2"; CASING 9 5/8" 32.3 # H-40; MUD 9.6 PPG.
Pump Water	11/27/2012 07:48		2	2			62.0	Fresh water ahead to fill lines.

Sold To #: 300721

Ship To #: 2965177

Quote #:

Sales Order #: 900019124

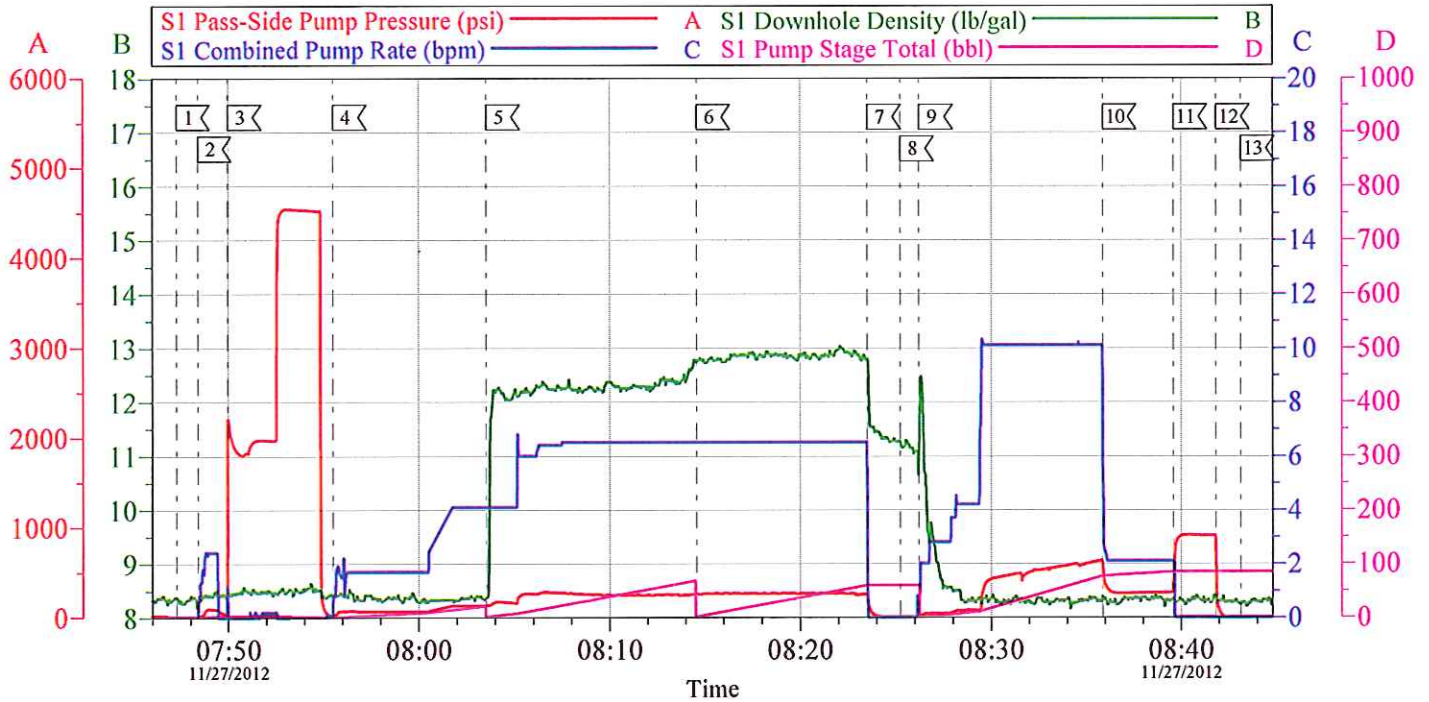
SUMMIT Version: 7.3.0045

Wednesday, December 05, 2012 12:03:00

Cementing Job Log

Activity Description	Date/Time	Cht #	Rate bbl/min	Volume bbl		Pressure psig		Comments
				Stage	Total	Tubing	Casing	
Test Lines	11/27/2012 07:49					4541.0		Test line to psi, Found no leaks, good test.
Pump Spacer 1	11/27/2012 07:55		4				127.0	20 BBL's fresh water.
Pump Lead Cement	11/27/2012 08:03		6.5	67.8			250.0	160 sks Lead cement, 12.3 ppg, 2.38 cf3, 13.75 gal/sk.
Pump Tail Cement	11/27/2012 08:14		6.5	60.1			270.0	160 sks Tail cement, 12.8 ppg, 2.11 cf3, 11.75 gal/sk.
Shutdown	11/27/2012 08:23							
Drop Plug	11/27/2012 08:25							Plug left Container.
Pump Displacement	11/27/2012 08:26		10	75.7			620.0	Fresh water displacement.
Slow Rate	11/27/2012 08:35		2	10			270.0	Slow rate last 10 BBL's of displacement prior to bumping the plug.
Bump Plug	11/27/2012 08:39				85.7		910.0	Plug landed. Took to 910 psi.
Check Floats	11/27/2012 08:41							Floats Held. 1/2 BBL's back. 30 BBL's of good cement to surface.
End Job	11/27/2012 08:43							Used 100#'s od sugar. No Add Hours.
Pre-Rig Down Safety Meeting	11/27/2012 08:45							Including entire cement crew, discussed hazards and safety.
Rig-Down Equipment	11/27/2012 08:50							
Pre-Convoy Safety Meeting	11/27/2012 09:30							Including entire cement crew, discussed hazards, route, and safety.
Crew Leave Location	11/27/2012 09:45							
Other	11/27/2012 09:45							Thank You for using Halliburton, Ed Arnold and Crew.

WPX - GM 341-12 9 5/8" SURFACE

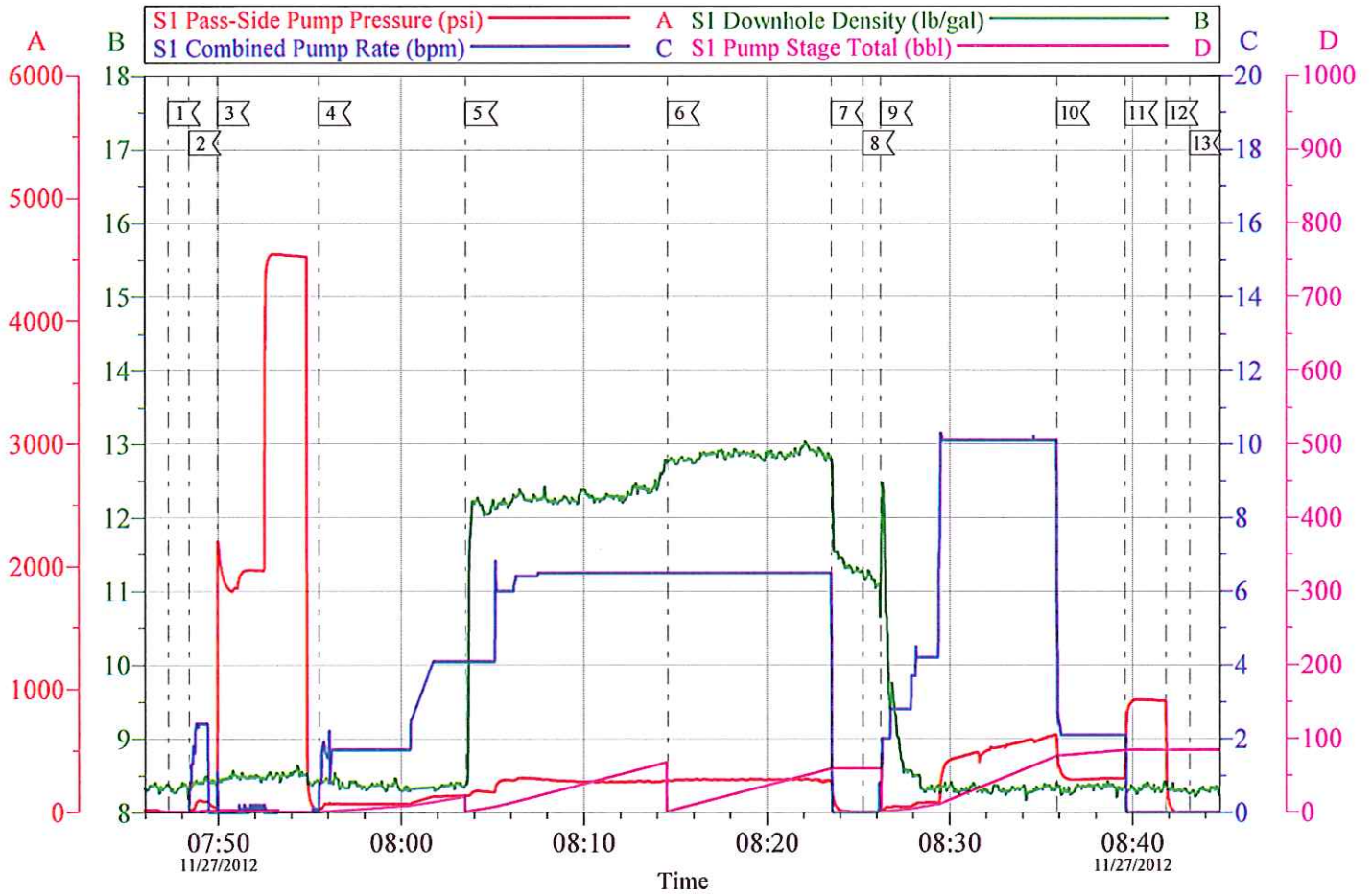


Local Event Log			
1 START JOB	07:47:16	2 FILL LINES	07:48:24
3 TEST LINES	07:49:59	4 H2O SPACER	07:55:31
5 LEAD CEMENT	08:03:32	6 TAIL CEMENT	08:14:35
7 SHUT DOWN	08:23:32	8 DROP PLUG	08:25:15
9 H2O DISPLACEMENT	08:26:14	10 SLOW RATE	08:35:54
11 BUMP PLUG	08:39:37	12 CHECK FLOATS	08:41:51
13 END JOB	08:43:09		

Customer: WPX	Job Date: 27-Nov-2012	Sales Order #: 900019124
Well Description: GM 341-12	Job Type: SURFACE	ADC Used: YES
Company Rep: AL DUNIHOO	Cement Supervisor: ED ARNOLD	Elite #8: DAN SINCLAIR

OptiCem v6.4.10
27-Nov-12 08:49

WPX - GM 341-12 9 5/8" SURFACE



Customer:	Job Date: 27-Nov-2012	Sales Order #: 900019124
Well Description:	Job Type:	ADC Used:
Company Rep:	Cement Supervisor:	Elite #8:

OptiCem v6.4.10
27-Nov-12 08:55